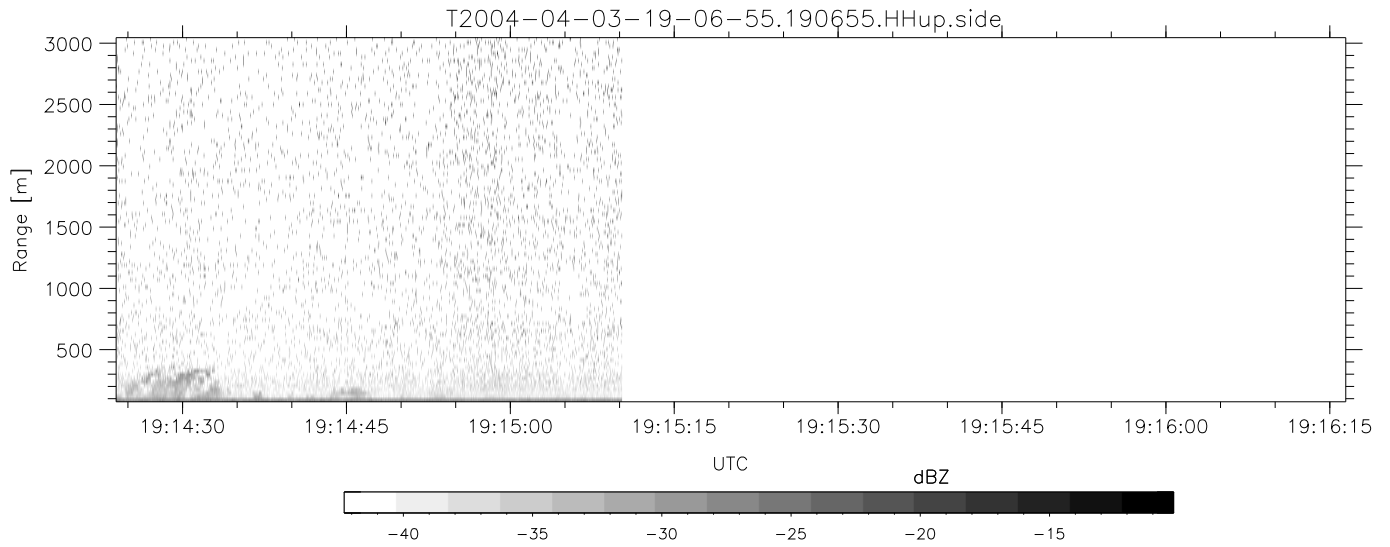
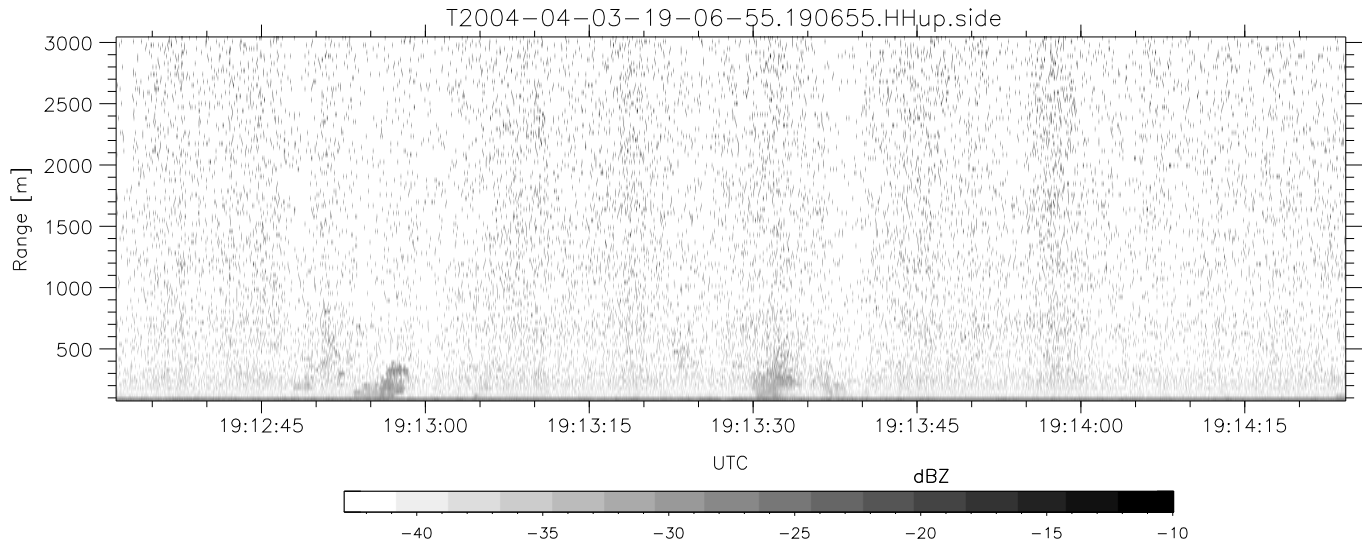


CIFEX 2004 Data (cal/250ns+2.5/100ns-3.5/500ns: 53.0,50.0)

T2004-04-03-19-06-55 - SPPMAG, IRIG:1/0/6
 UTC: 19:06:55.06 to 19:15:10.20, Dur: 495s
 TimeLngth: 495.13s, TimeInt: 35ms (28.2pps)
 TimeCor=-13.0s, PPS(min,max,med): 28,29,28
 Timeint/DSPdiff(mn,min,mx):35,35,35/35,35,35
 Prof: 344 to 14327, NumProf(r/t): 13983/13983
 ADacqtime: 32ms; DRate: 45.6kB/s; Flags: 0, 0, 0
 Pulse: 275ns, IFfilt: 5.0MHz; ppPol: HH
 TxPol: H, PRF: 20 20 20 10 kHz, NoiseFlg:1234
 Range: Delay 75m, Spacing 30m, Gates 100
 Ave. Pulses: 520, Rng/Prof Aspect@90m/s: 9.4

| | Min | Max | Mean | Std | Varc% |
|------------|--------|--------|--------|--------|-------|
| hhN (dB) | -65.66 | -64.07 | -64.84 | -78.57 | 4.2 |
| vvN (dB) | -65.63 | -64.39 | -64.98 | -78.79 | 4.2 |
| hhL (dB) | -8.73 | -1.35 | -4.44 | -10.26 | 26.2 |
| vhL (dB) | 6.00 | 6.00 | 6.00 | -Inf | 0.0 |
| ppN (m/s) | -15.80 | 15.80 | 0.03 | 9.05 | |
| ppT (m/s) | -0.05 | 0.02 | -0.01 | 0.01 | |
| vh/hh (dB) | -99 | -99 | -99 | -99 | -99 |
| hnjmp (dB) | | | -0.14 | | |
| vnjmp (dB) | | | -0.13 | | |



CIFEX 2004 Data (cal/250ns+2.5/100ns-3.5/500ns: 53.0,50.0)

T2004-04-03-19-06-55 - SPPMAG, IRIG:1/0/6
 UTC: 19:06:55.06 to 19:15:10.20, Dur: 495s
 TimeLngth: 495.13s, TimeInt: 35ms (28.2pps)
 TimeCor=-13.0s, PPS(min,max,med): 28,29,28
 Timeint/DSPdiff(mn,min,mx):35,35,35/35,35,35
 Prof: 344 to 14327, NumProf(r/t): 13983/13983
 ADacqtime: 32ms; DRate: 45.6kB/s; Flags: 0, 0, 0
 Pulse: 275ns, IFfilt: 5.0MHz; ppPol: HH
 TxPol: H, PRF: 20 20 20 10 kHz, NoiseFlg:1234
 Range: Delay 75m, Spacing 30m, Gates 100
 Ave. Pulses: 520, Rng/Prof Aspect@90m/s: 9.4

| | Min | Max | Mean | Std | Varc% |
|-----------|--------|--------|--------|--------|-------|
| hhN(dB) | -65.66 | -64.07 | -64.84 | -78.57 | 4.2 |
| vvN(dB) | -65.63 | -64.39 | -64.98 | -78.79 | 4.2 |
| hhL(dB) | -8.73 | -1.35 | -4.44 | -10.26 | 26.2 |
| vhL(dB) | 6.00 | 6.00 | 6.00 | -Inf | 0.0 |
| ppN(m/s) | -15.80 | 15.80 | 0.03 | 9.05 | |
| ppT(m/s) | -0.05 | 0.02 | -0.01 | 0.01 | |
| vh/hh(dB) | -99 | -99 | -99 | -99 | -99 |
| hnjmp(dB) | | | -0.14 | | |
| vnjmp(dB) | | | -0.13 | | |