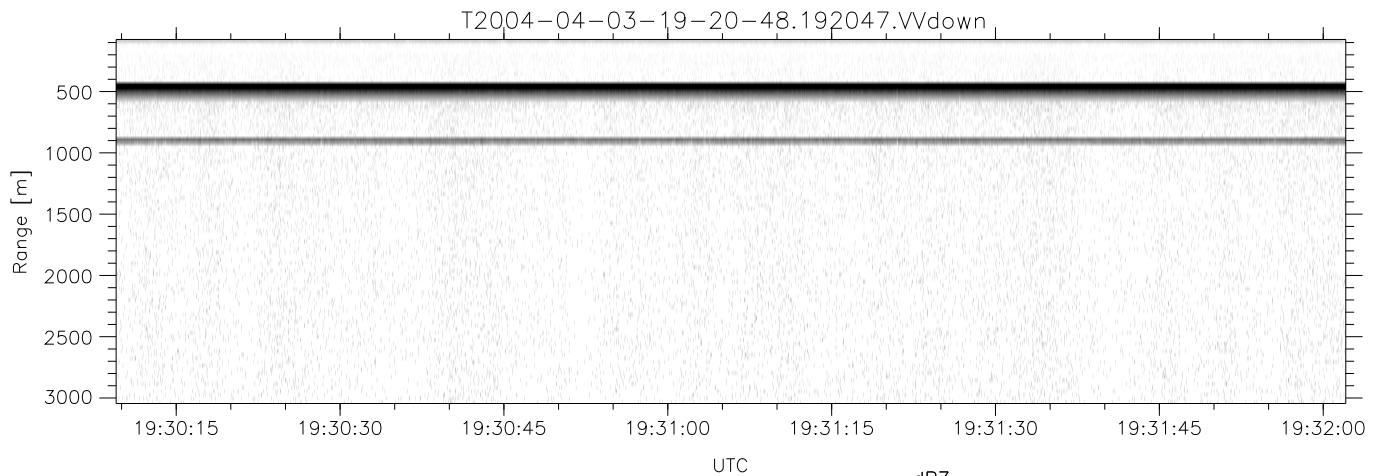
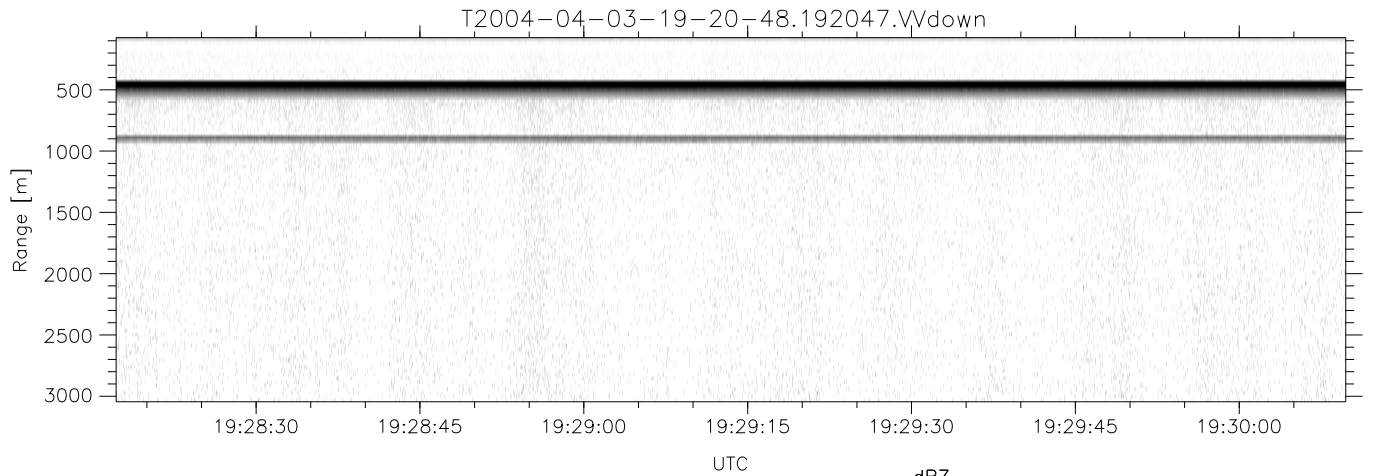
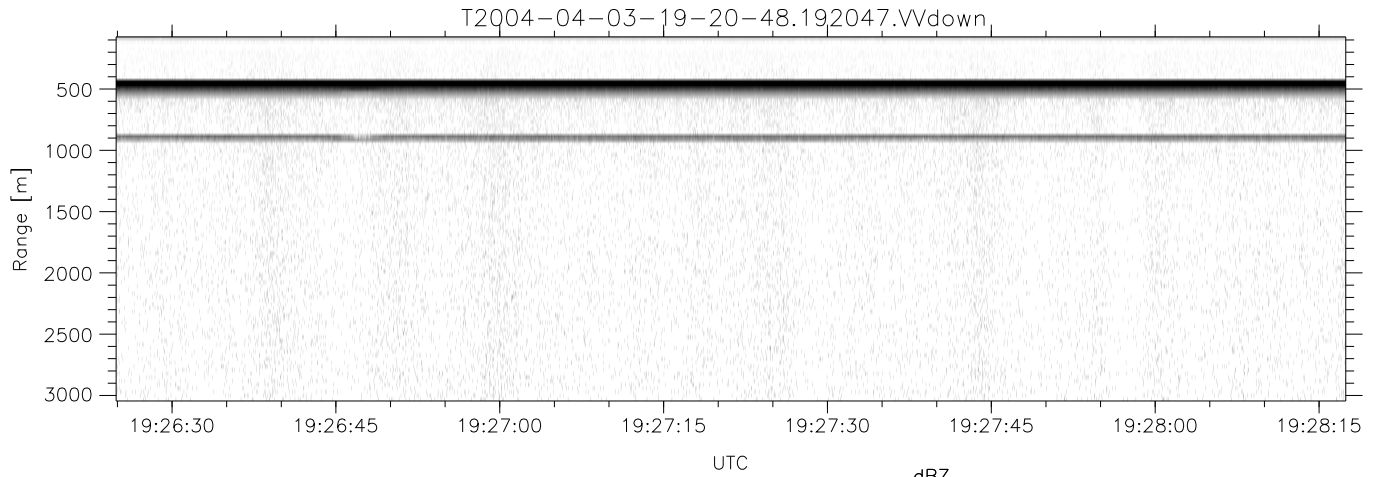


CIFEX 2004 Data (cal/250ns+2.5/100ns-3.5/500ns: 53.0,50.0)

T2004-04-03-19-20-48 - PPMAG4, IRIG:1/0/6  
 UTC: 19:20:47.98 to 19:47:49.97, Dur: 1622s  
 TimeLngth: 1622.03s, TimeInt: 28ms (35.4pps)  
 TimeCor=-13.0s, PPS(min,max,med): 35,36,35  
 Timeint/DSPdiff(mn,min,mx):28,28,34/28,28,34  
 Prof: 301 to 57782, NumProf(r/t): 35142/57481  
 ProcTime/Recs: 19:20:47-19:37:19/0-35141  
 ADacqtime: 25ms; DRate: 198.4KB/s; Flags: 0, 0, 0  
 Pulse: 275ns, IFilt: 5.0MHz; ppPol: HH HV VV  
 TxPol: HHVV, PRF: 20 10 20 10 kHz, NoiseFlg:4,2  
 Range: Delay 75m, Spacing 30m, Gates 100  
 Ave. Pulses: 84, Rng/Prof Aspect@90m/s: 11.8

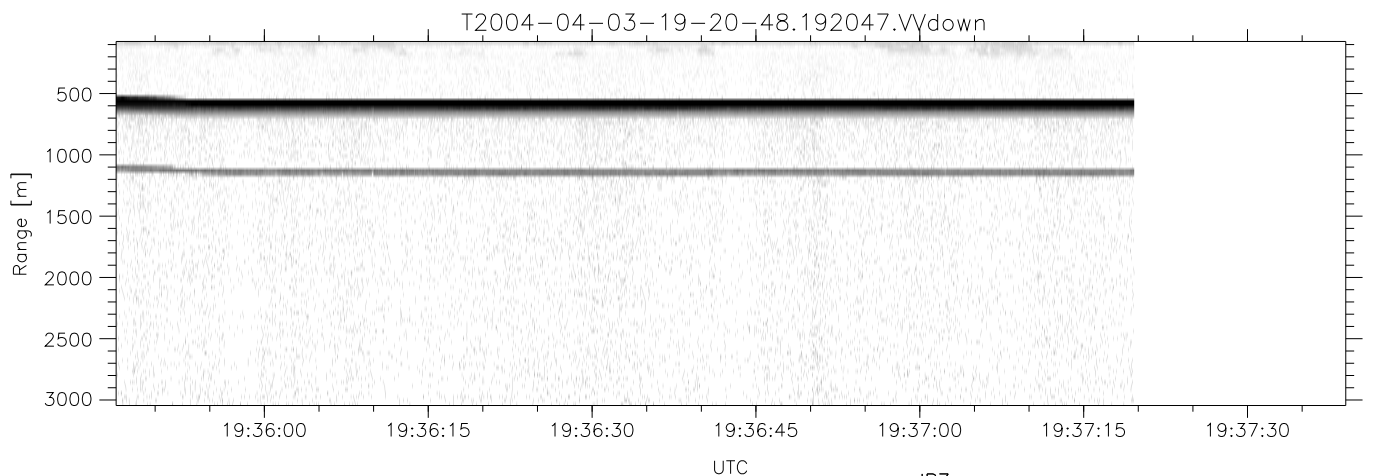
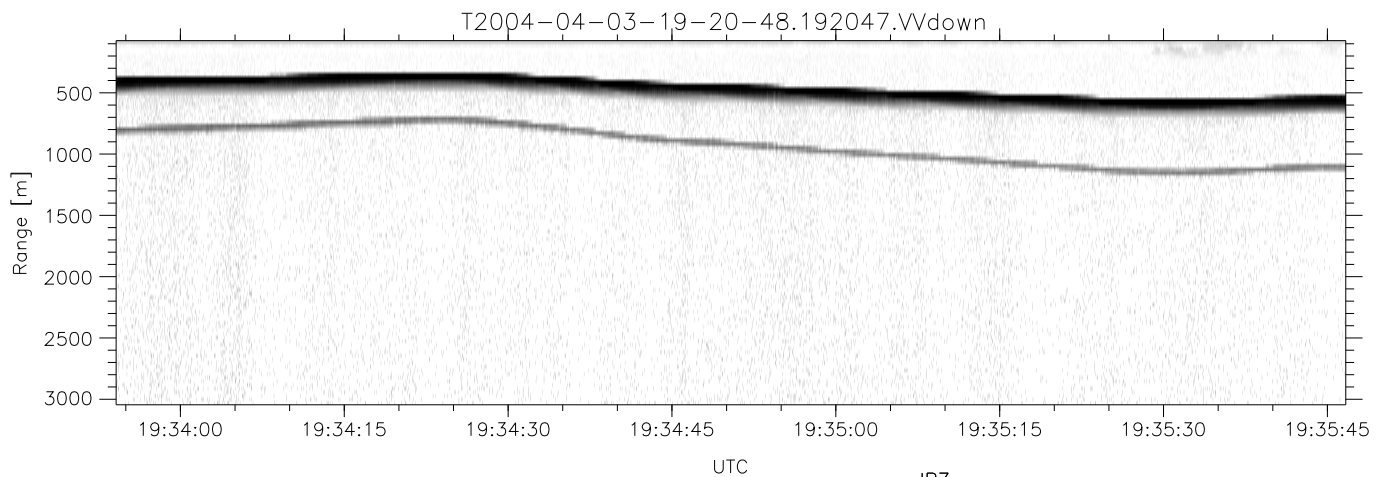
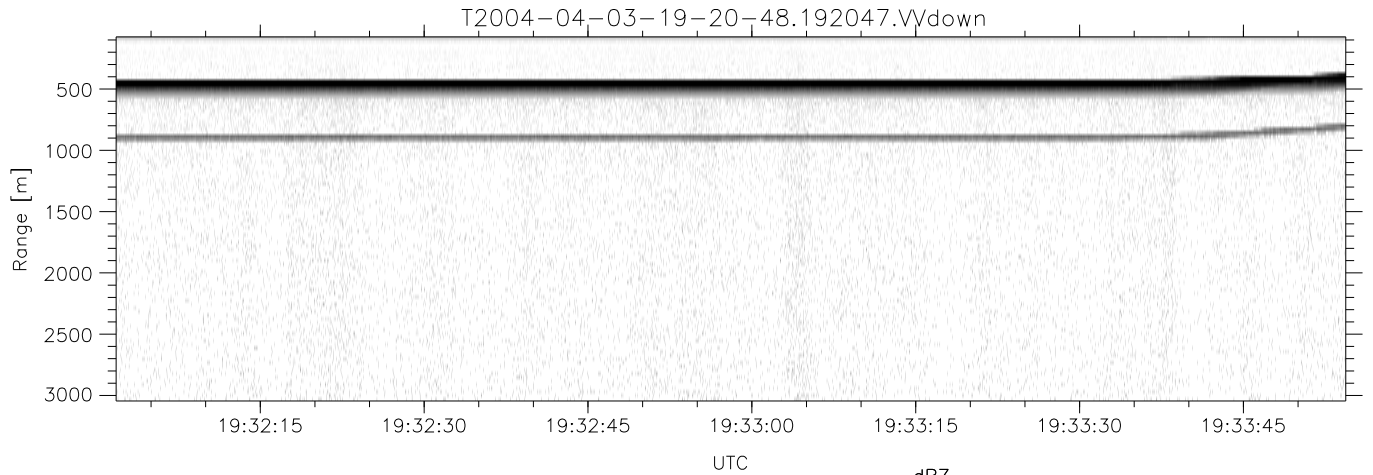
	Min	Max	Mean	Std	Varc%
hhN (dB)	-66.76	-63.21	-64.92	-75.04	9.7
vvN (dB)	-67.01	-63.36	-65.00	-75.07	9.8
hhL (dB)	-12.01	-0.81	-7.90	-12.82	32.2
vvL (dB)	-2.22	6.00	5.90	-5.84	6.7
ppN (m/s)	-12.91	12.77	-0.03	4.13	
ppT (m/s)	-102.0	100.87	-0.24	32.60	
hh/vv (dB)	NaN	43.35	18.42	32.33	2460
vh/hh (dB)	-99	-99	-99	-99	-99
hv/vv (dB)	NaN	-34.53	-54.79	-45.59	831.
hnjmp (dB)			0.16		
vnjmp (dB)			0.14		



CIFEX 2004 Data (cal/250ns+2.5/100ns-3.5/500ns: 53.0,50.0)

T2004-04-03-19-20-48 - PPMAG4, IRIG:1/0/6  
 UTC: 19:20:47.98 to 19:47:49.97, Dur: 1622s  
 TimeLngth: 1622.03s, TimeInt: 28ms (35.4pps)  
 TimeCor=-13.0s, PPS(min,max,med): 35,36,35  
 Timeint/DSPdiff(mn,min,mx):28,28,34/28,28,34  
 Prof: 301 to 57782, NumProf(r/t): 35142/57481  
 ProcTime/Recs: 19:20:47-19:37:19/0-35141  
 ADacqtime: 25ms; DRate: 198.4KB/s; Flags: 0, 0, 0  
 Pulse: 275ns, IFilt: 5.0MHz; ppPol: HH HV VV  
 TxPol: HHVV, PRF: 20 10 20 10 kHz, NoiseFlg:4,2  
 Range: Delay 75m, Spacing 30m, Gates 100  
 Ave. Pulses: 84, Rng/Prof Aspect@90m/s: 11.8

	Min	Max	Mean	Std	Varc%
hhN(dB)	-66.76	-63.21	-64.92	-75.04	9.7
vvN(dB)	-67.01	-63.36	-65.00	-75.07	9.8
hhL(dB)	-12.01	-0.81	-7.90	-12.82	32.2
vvL(dB)	-2.22	6.00	5.90	-5.84	6.7
ppN(m/s)	-12.91	12.77	-0.03	4.13	
ppT(m/s)	-102.0	100.87	-0.24	32.60	
hh/vv(dB)	NaN	43.35	18.42	32.33	2460
vh/hh(dB)	-99	-99	-99	-99	-99
hv/vv(dB)	NaN	-34.53	-54.79	-45.59	831.
hnjmp(dB)			0.16		
vnjmp(dB)			0.14		



CIFEX 2004 Data (cal/250ns+2.5/100ns-3.5/500ns: 53.0,50.0)

T2004-04-03-19-20-48 - PPMAG4, IRIG:1/0/6  
 UTC: 19:20:47.98 to 19:47:49.97, Dur: 1622s  
 TimeLngth: 1622.03s, TimeInt: 28ms (35.4pps)  
 TimeCor=-13.0s, PPS(min,max,med): 35,36,35  
 Timeint/DSPdiff(mn,min,mx):28,28,34/28,28,34  
 Prof: 301 to 57782, NumProf(r/t): 35142/57481  
 ProcTime/Recs: 19:20:47-19:37:19/0-35141  
 ADacqtime: 25ms; DRate: 198.4KB/s; Flags: 0, 0, 0  
 Pulse: 275ns, IFilt: 5.0MHz; ppPol: HH HV VV  
 TxPol: HHVV, PRF: 20 10 20 10 kHz, NoiseFlg:4,2  
 Range: Delay 75m, Spacing 30m, Gates 100  
 Ave. Pulses: 84, Rng/Prof Aspect@90m/s: 11.8

	Min	Max	Mean	Std	Varc%
hhN(dB)	-66.76	-63.21	-64.92	-75.04	9.7
vvN(dB)	-67.01	-63.36	-65.00	-75.07	9.8
hhL(dB)	-12.01	-0.81	-7.90	-12.82	32.2
vvL(dB)	-2.22	6.00	5.90	-5.84	6.7
ppN(m/s)	-12.91	12.77	-0.03	4.13	
ppT(m/s)	-102.0	100.87	-0.24	32.60	
hh/vv(dB)	NaN	43.35	18.42	32.33	2460
vh/hh(dB)	-99	-99	-99	-99	-99
hv/vv(dB)	NaN	-34.53	-54.79	-45.59	831.
hnjmp(dB)			0.16		
vnjmp(dB)			0.14		