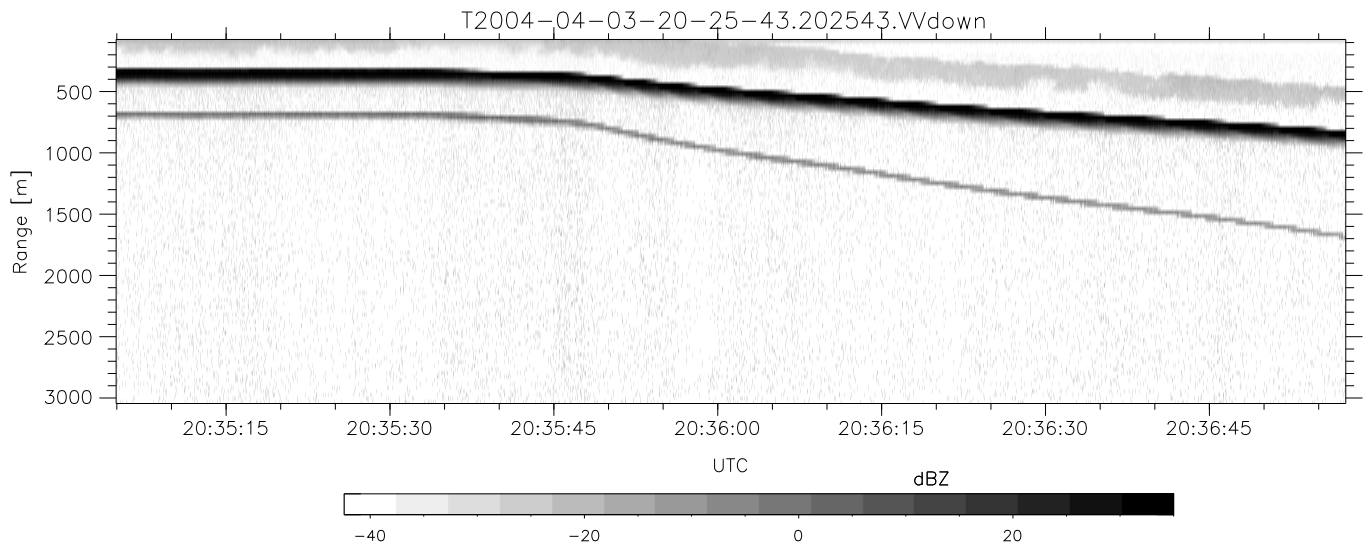
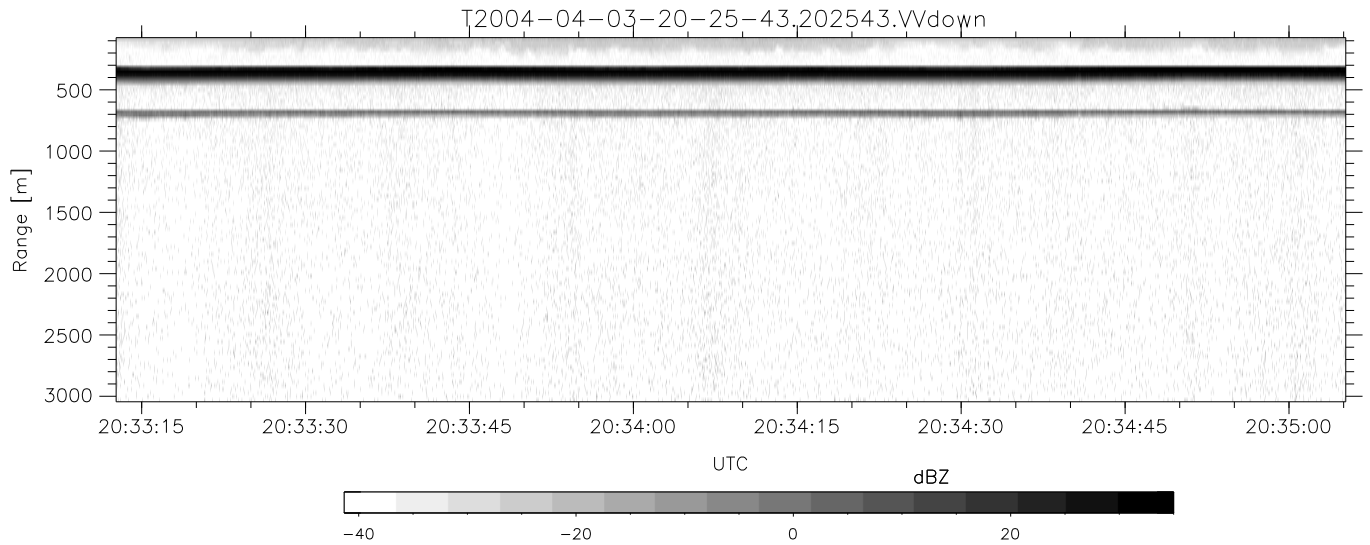
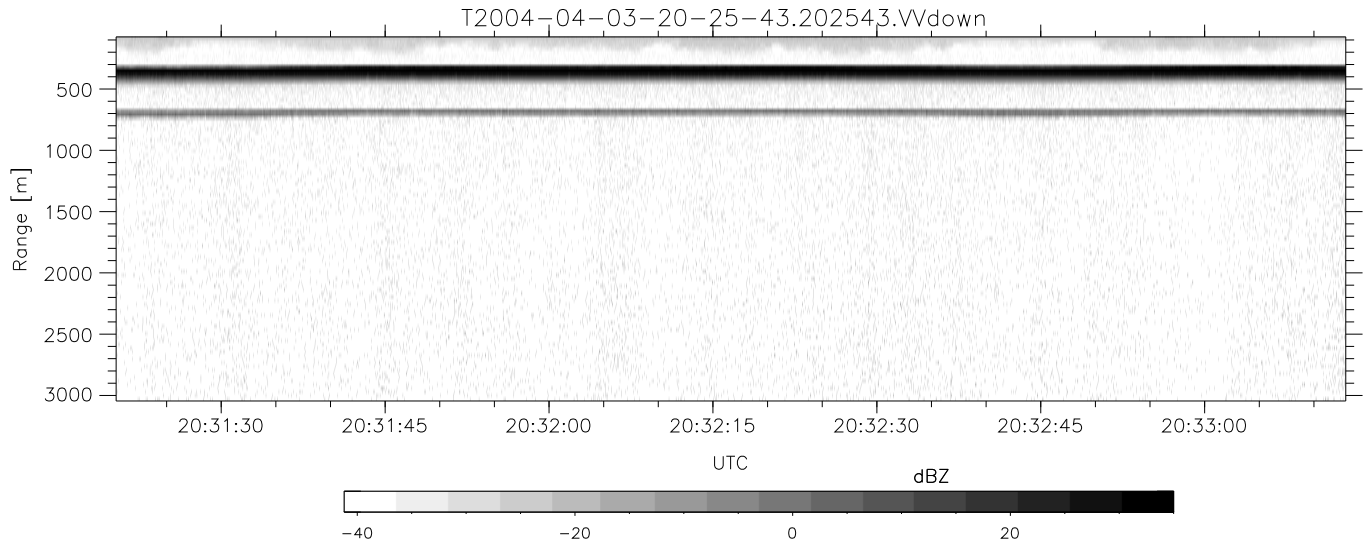


CIFEX 2004 Data (cal/250ns+2.5/100ns-3.5/500ns: 53.0,50.0)

T2004-04-03-20-25-43 - PPMAG4, IRIG:1/0/6  
 UTC: 20:25:43.50 to 20:42:28.08, Dur: 1005s  
 TimeLngth: 1004.54s, TimeInt: 28ms (35.4pps)  
 TimeCor=-13.0s, PPS(min,max,med): 34,36,35  
 Timeint/DSPdiff(mn,min,mx):28,28,64/28,28,28  
 Prof: 419 to 36018, NumProf(r/t): 35599/35599  
 ADacqtime: 25ms; DRate: 198.4KB/s; Flags: 0, 0, 0  
 Pulse: 275ns, IFfilt: 5.0MHz; ppPol: HH HV W  
 TxPol: HHVV, PRF: 20 10 20 10 kHz, NoiseFlg:4,2  
 Range: Delay 75m, Spacing 30m, Gates 100  
 Ave. Pulses: 84, Rng/Prof Aspect@90m/s: 11.8

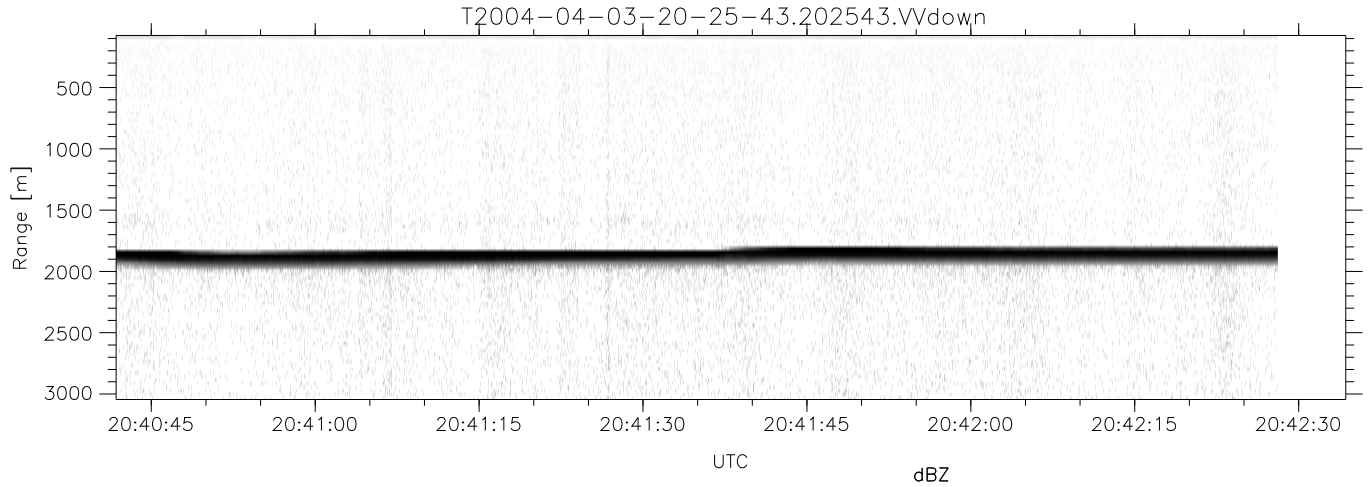
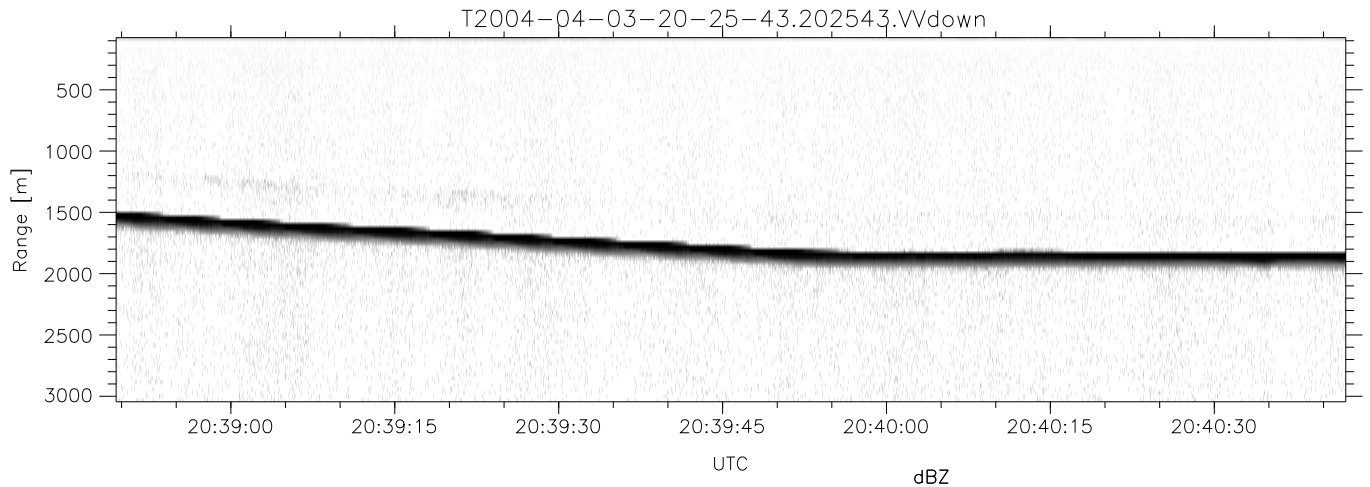
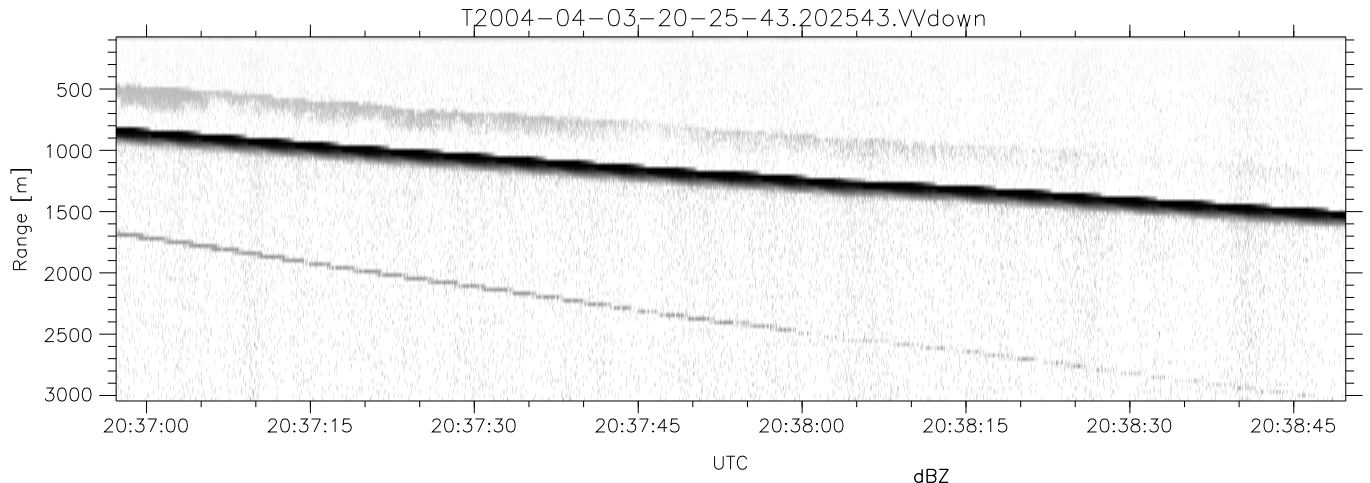
	Min	Max	Mean	Std	Varc%
hhN(dB)	-67.04	-63.43	-65.10	-75.17	9.8
vvN(dB)	-66.97	-63.43	-65.18	-75.23	9.9
hhL(dB)	-13.28	3.71	-1.56	-1.77	95.1
vvL(dB)	-7.90	6.00	4.28	1.27	50.1
ppN(m/s)	-12.53	12.70	0.00	4.14	
ppT(m/s)	-98.96	100.36	0.01	32.70	
hh/vv(dB)	0.13	19.91	9.13	10.28	130.
vh/hh(dB)	-99	-99	-99	-99	-99
hv/vv(dB)	NaN	-33.88	-56.57	-45.83	1186
hnjmp(dB)			0.16		
vnjmp(dB)			0.15		



CIFEX 2004 Data (cal/250ns+2.5/100ns-3.5/500ns: 53.0,50.0)

T2004-04-03-20-25-43 - PPMAG4, IRIG:1/0/6  
 UTC: 20:25:43.50 to 20:42:28.08, Dur: 1005s  
 TimeLngth: 1004.54s, TimeInt: 28ms (35.4pps)  
 TimeCor=-13.0s, PPS(min,max,med): 34,36,35  
 Timeint/DSPdiff(mn,min,mx):28,28,64/28,28,28  
 Prof: 419 to 36018, NumProf(r/t): 35599/35599  
 ADacqtime: 25ms; DRate: 198.4KB/s; Flags: 0, 0, 0  
 Pulse: 275ns, IFfilt: 5.0MHz; ppPol: HH HV VV  
 TxPol: HHVV, PRF: 20 10 20 10 kHz, NoiseFlg:4,2  
 Range: Delay 75m, Spacing 30m, Gates 100  
 Ave. Pulses: 84, Rng/Prof Aspect@90m/s: 11.8

	Min	Max	Mean	Std	Varc%
hhN (dB)	-67.04	-63.43	-65.10	-75.17	9.8
vvN (dB)	-66.97	-63.43	-65.18	-75.23	9.9
hhL (dB)	-13.28	3.71	-1.56	-1.77	95.1
vvL (dB)	-7.90	6.00	4.28	1.27	50.1
ppN (m/s)	-12.53	12.70	0.00	4.14	
ppT (m/s)	-98.96	100.36	0.01	32.70	
hh/vv (dB)	0.13	19.91	9.13	10.28	130.
vh/hh (dB)	-99	-99	-99	-99	-99
hv/vv (dB)	NaN	-33.88	-56.57	-45.83	1186
hn_jmp (dB)			0.16		
vn_jmp (dB)			0.15		



CIFEX 2004 Data (cal/250ns+2.5/100ns-3.5/500ns: 53.0,50.0)

T2004-04-03-20-25-43 - PPMAG4, IRIG:1/0/6  
 UTC: 20:25:43.50 to 20:42:28.08, Dur: 1005s  
 TimeLngth: 1004.54s, TimeInt: 28ms (35.4pps)  
 TimeCor=-13.0s, PPS(min,max,med): 34,36,35  
 Timeint/DSPdiff(mn,min,mx):28,28,64/28,28,28  
 Prof: 419 to 36018, NumProf(r/t): 35599/35599  
 ADacqtime: 25ms; DRate: 198.4KB/s; Flags: 0, 0, 0  
 Pulse: 275ns, IFfilt: 5.0MHz; ppPol: HH HV VV  
 TxPol: HHVV, PRF: 20 10 20 10 kHz, NoiseFlg:4,2  
 Range: Delay 75m, Spacing 30m, Gates 100  
 Ave. Pulses: 84, Rng/Prof Aspect@90m/s: 11.8

	Min	Max	Mean	Std	Varc%
hhN(dB)	-67.04	-63.43	-65.10	-75.17	9.8
vvN(dB)	-66.97	-63.43	-65.18	-75.23	9.9
hhL(dB)	-13.28	3.71	-1.56	-1.77	95.1
vvL(dB)	-7.90	6.00	4.28	1.27	50.1
ppN(m/s)	-12.53	12.70	0.00	4.14	
ppT(m/s)	-98.96	100.36	0.01	32.70	
hh/vv(dB)	0.13	19.91	9.13	10.28	130.
vh/hh(dB)	-99	-99	-99	-99	-99
hv/vv(dB)	NaN	-33.88	-56.57	-45.83	1186
hn_jmp(dB)			0.16		
vn_jmp(dB)			0.15		