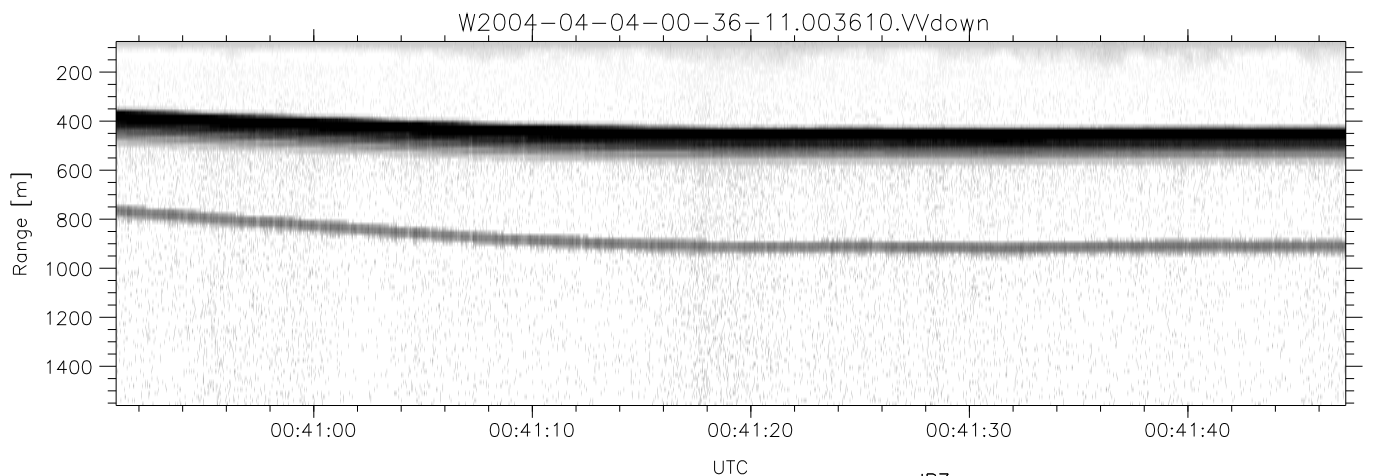
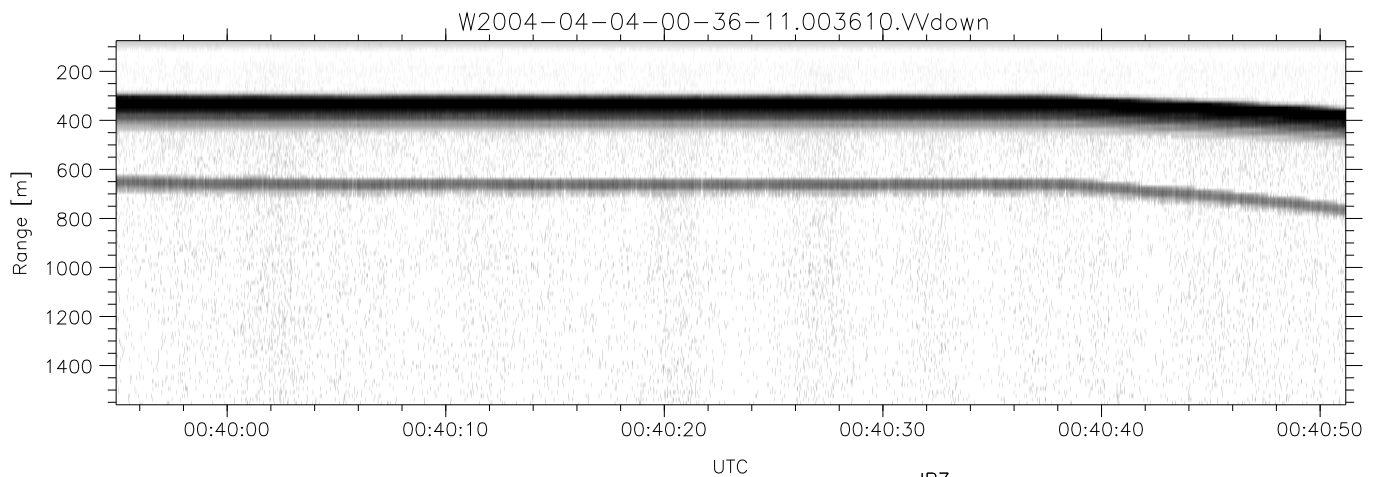
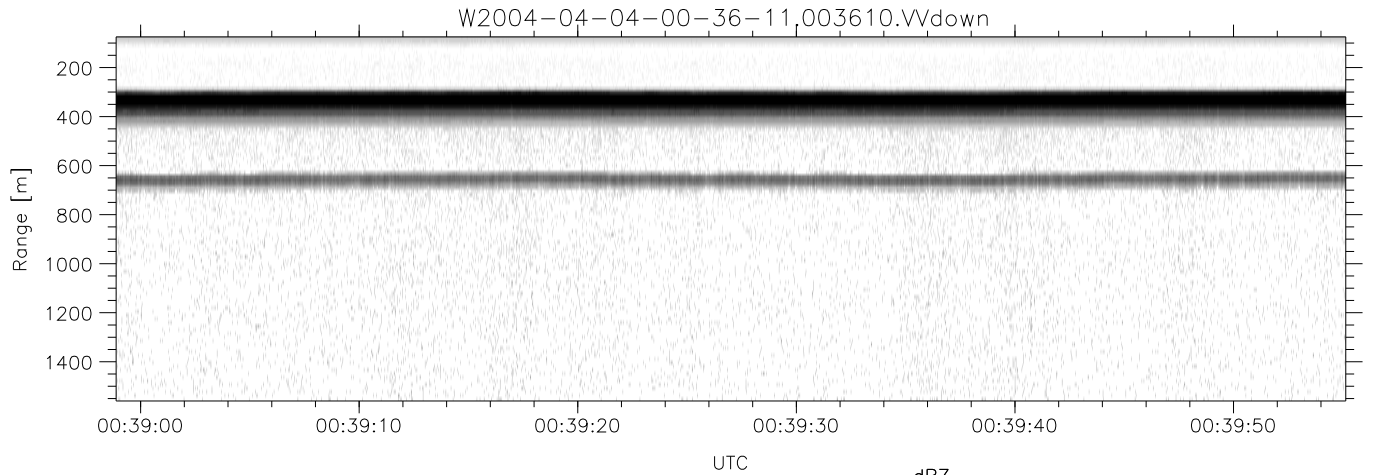


CIFEX 2004 Data (cal/250ns+2.5/100ns-3.5/500ns: 53.0,50.0)

W2004-04-04-00-36-11 - PPMAG4, IRIG:1/0/6  
 UTC: 00:36:10.79 to 00:50:54.47, Dur: 884s ???  
 TimeLngth: 885.22s, TimeInt: 23ms (42.2pps)  
 TimeCor=-13.0s, PPS(min,max,med): 41,43,42  
 Timeint/DSPdiff(mn,min,mx):23,20,40/25,20,40  
 Prof: 473 to 37792, NumProf(r/t): 21085/37319  
 ProcTime/Recs: 00:36:10-00:44:30/0-21084  
 ADacqtime: 25ms; DRate: 236.4KB/s; Flags: 0, 0, 0  
 Pulse: 275ns, IFfilt: 5.0MHz; ppPol: HH HV VV  
 TxPol: HHVV, PRF: 20 10 20 10 kHz, Noiseflg:1,4  
 Range: Delay 75m, Spacing 15m, Gates 100  
 Ave. Pulses: 84, Rng/Prof Aspect@90m/s: 7.0

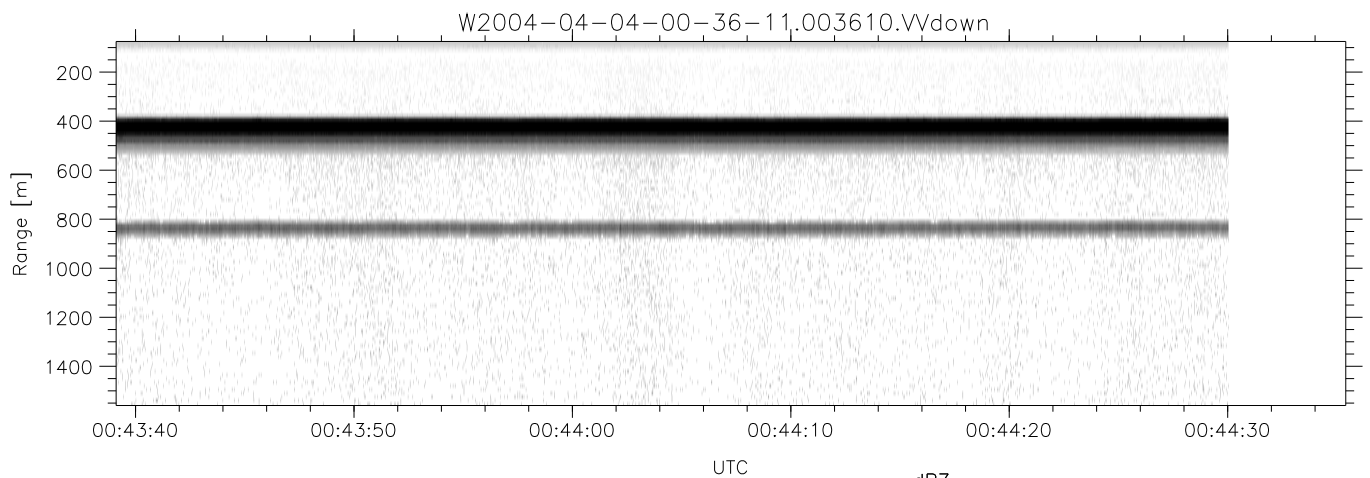
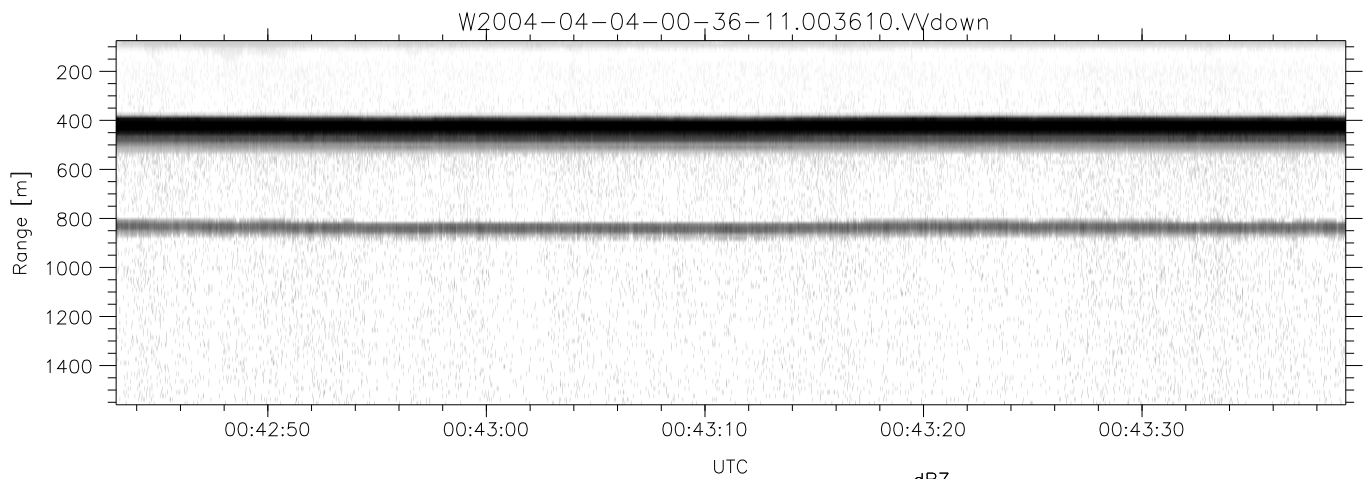
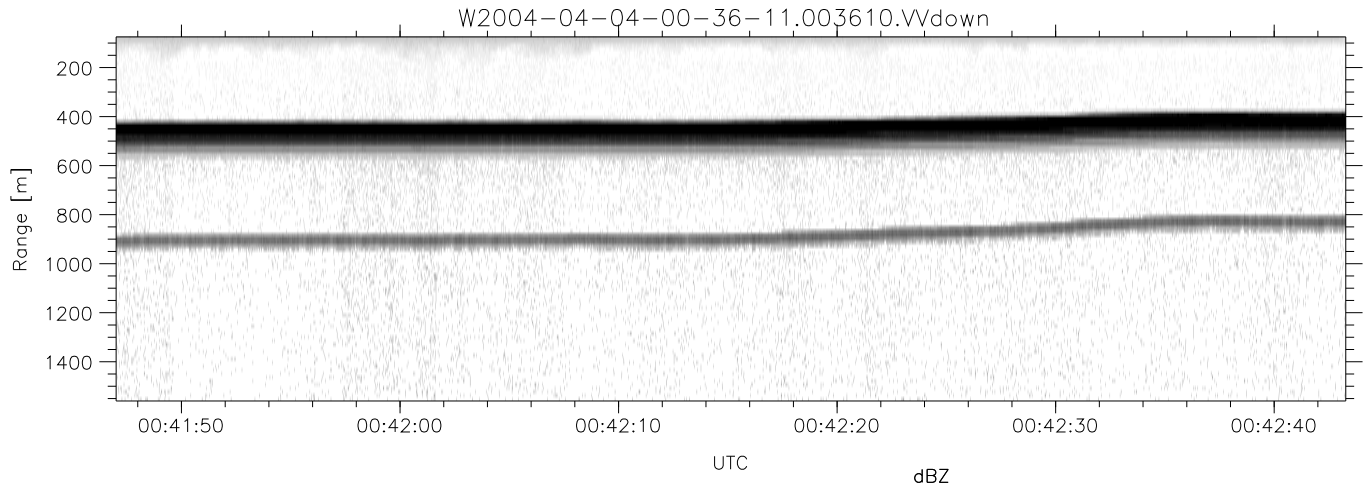
	Min	Max	Mean	Std	Varc%
hhN(dB)	-67.63	-63.75	-65.29	-75.31	9.9
vvN(dB)	-67.30	-63.66	-65.39	-75.41	10.0
hhL(dB)	-13.57	-4.32	-8.66	-13.10	36.0
vvL(dB)	-1.57	6.00	4.91	-0.66	27.7
ppN(m/s)	-12.32	12.52	-0.08	4.17	
ppT(m/s)	-97.29	98.92	-0.62	32.98	
hh/vv(dB)	NaN	39.97	8.07	21.54	2224
vh/hh(dB)	-99	-99	-99	-99	-99
hv/vv(dB)	NaN	-31.49	-49.99	-43.73	423.
hnjmp(dB)			0.16		
vnjmp(dB)			0.14		



CIFEX 2004 Data (cal/250ns+2.5/100ns-3.5/500ns: 53.0,50.0)

W2004-04-04-00-36-11 - PPMAG4, IRIG:1/0/6  
 UTC: 00:36:10.79 to 00:50:54.47, Dur: 884s ???  
 TimeLngth: 885.22s, TimeInt: 23ms (42.2pps)  
 TimeCor=-13.0s, PPS(min,max,med): 41,43,42  
 Timeint/DSPdiff(mn,min,mx):23,20,40/25,20,40  
 Prof: 473 to 37792, NumProf(r/t): 21085/37319  
 ProcTime/Recs: 00:36:10-00:44:30/0-21084  
 ADacqtime: 25ms; DRate: 236.4KB/s; Flags: 0, 0, 0  
 Pulse: 275ns, IFilt: 5.0MHz; ppPol: HH HV VV  
 TxPol: HHVV, PRF: 20 10 20 10 kHz, NoiseFlg:1,4  
 Range: Delay 75m, Spacing 15m, Gates 100  
 Ave. Pulses: 84, Rng/Prof Aspect@90m/s: 7.0

	Min	Max	Mean	Std	Varc%
hhN(dB)	-67.63	-63.75	-65.29	-75.31	9.9
vvN(dB)	-67.30	-63.66	-65.39	-75.41	10.0
hhL(dB)	-13.57	-4.32	-8.66	-13.10	36.0
vvL(dB)	-1.57	6.00	4.91	-0.66	27.7
ppN(m/s)	-12.32	12.52	-0.08	4.17	
ppT(m/s)	-97.29	98.92	-0.62	32.98	
hh/vv(dB)	NaN	39.97	8.07	21.54	2224
vh/hh(dB)	-99	-99	-99	-99	-99
hv/vv(dB)	NaN	-31.49	-49.99	-43.73	423.0
hnjmp(dB)			0.16		
vnjmp(dB)			0.14		



CIFEX 2004 Data (cal/250ns+2.5/100ns-3.5/500ns: 53.0,50.0)

W2004-04-04-00-36-11 - PPMAG4, IRIG:1/0/6  
 UTC: 00:36:10.79 to 00:50:54.47, Dur: 884s ???  
 TimeLngth: 885.22s, TimeInt: 23ms (42.2pps)  
 TimeCor=-13.0s, PPS(min,max,med): 41,43,42  
 Timeint/DSPdiff(mn,min,mx):23,20,40/25,20,40  
 Prof: 473 to 37792, NumProf(r/t): 21085/37319  
 ProcTime/Recs: 00:36:10-00:44:30/0-21084  
 ADacqtime: 25ms; DRate: 236.4KB/s; Flags: 0, 0, 0  
 Pulse: 275ns, IFfilt: 5.0MHz; ppPol: HH HV VV  
 TxPol: HHVV, PRF: 20 10 20 10 kHz, Noiseflg:1,4  
 Range: Delay 75m, Spacing 15m, Gates 100  
 Ave. Pulses: 84, Rng/Prof Aspect@90m/s: 7.0

	Min	Max	Mean	Std	Varc%
hhN(dB)	-67.63	-63.75	-65.29	-75.31	9.9
vvN(dB)	-67.30	-63.66	-65.39	-75.41	10.0
hhL(dB)	-13.57	-4.32	-8.66	-13.10	36.0
vvL(dB)	-1.57	6.00	4.91	-0.66	27.7
ppN(m/s)	-12.32	12.52	-0.08	4.17	
ppT(m/s)	-97.29	98.92	-0.62	32.98	
hh/vv(dB)	NaN	39.97	8.07	21.54	2224
vh/hh(dB)	-99	-99	-99	-99	-99
hv/vv(dB)	NaN	-31.49	-49.99	-43.73	423.
hnjmp(dB)			0.16		
vnjmp(dB)			0.14		