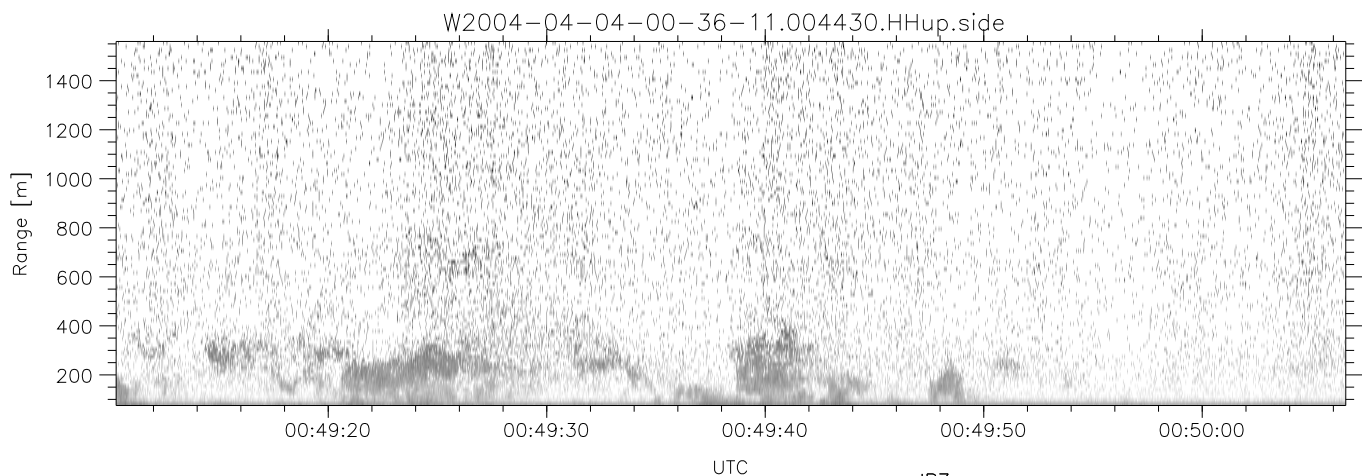
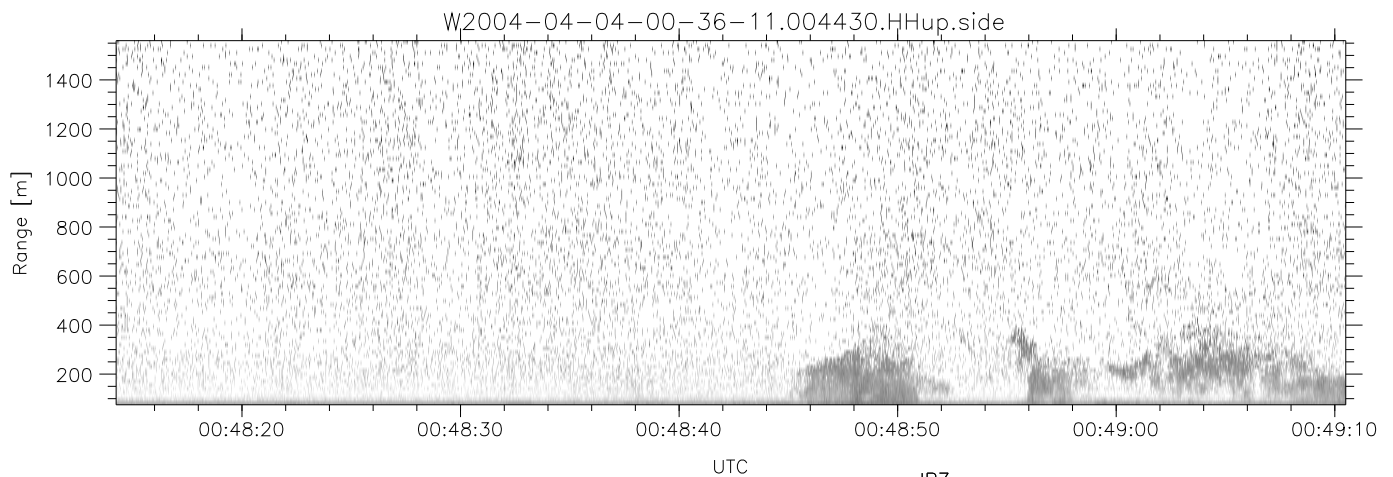
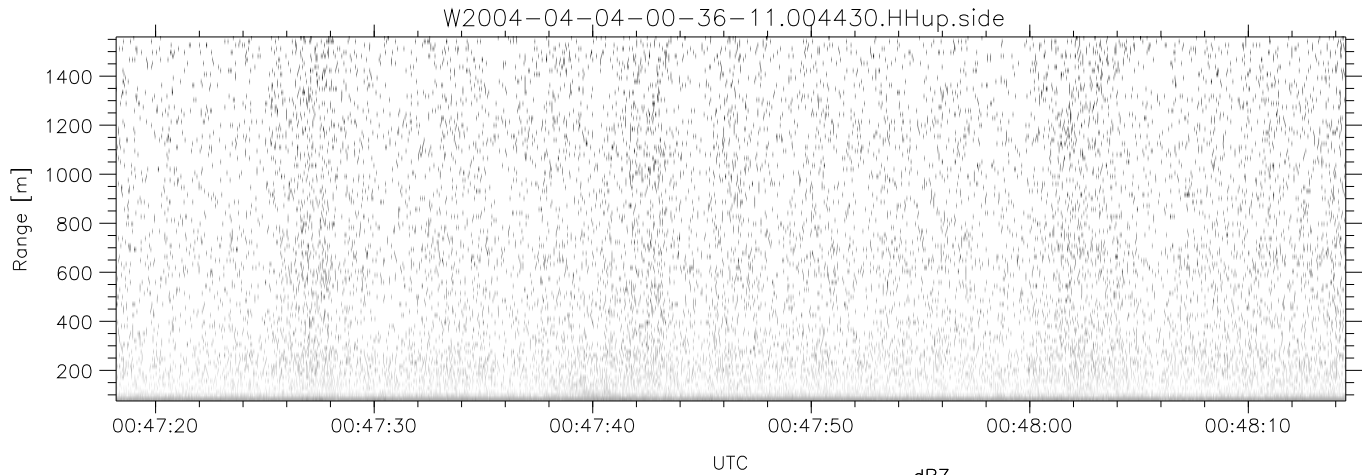


CIFEX 2004 Data (cal/250ns+2.5/100ns-3.5/500ns: 53.0,50.0)

W2004-04-04-00-36-11 - PPMAG4, IRIG:1/0/6  
 UTC: 00:36:10.79 to 00:50:54.47, Dur: 884s ???  
 TimeLngth: 885.71s, TimeInt: 23ms (42.1pps)  
 TimeCor=-13.0s, PPS(min,max,med): 41,43,42  
 Timeint/DSPdiff(mn,min,mx):23,20,37/21,20,27  
 Prof: 473 to 37792, NumProf(r/t): 16234/37319  
 ProcTime/Recs: 00:44:30-00:50:54/21085-37318  
 ADacqtime: 25ms; DRate: 236.4KB/s; Flags: 0, 0, 0  
 Pulse: 275ns, IFilt: 5.0MHz; ppPol: HH HV VV  
 TxPol: HHVV, PRF: 20 10 20 10 kHz, NoiseFlg:4,2  
 Range: Delay 75m, Spacing 15m, Gates 100  
 Ave. Pulses: 84, Rng/Prof Aspect@90m/s: 7.0

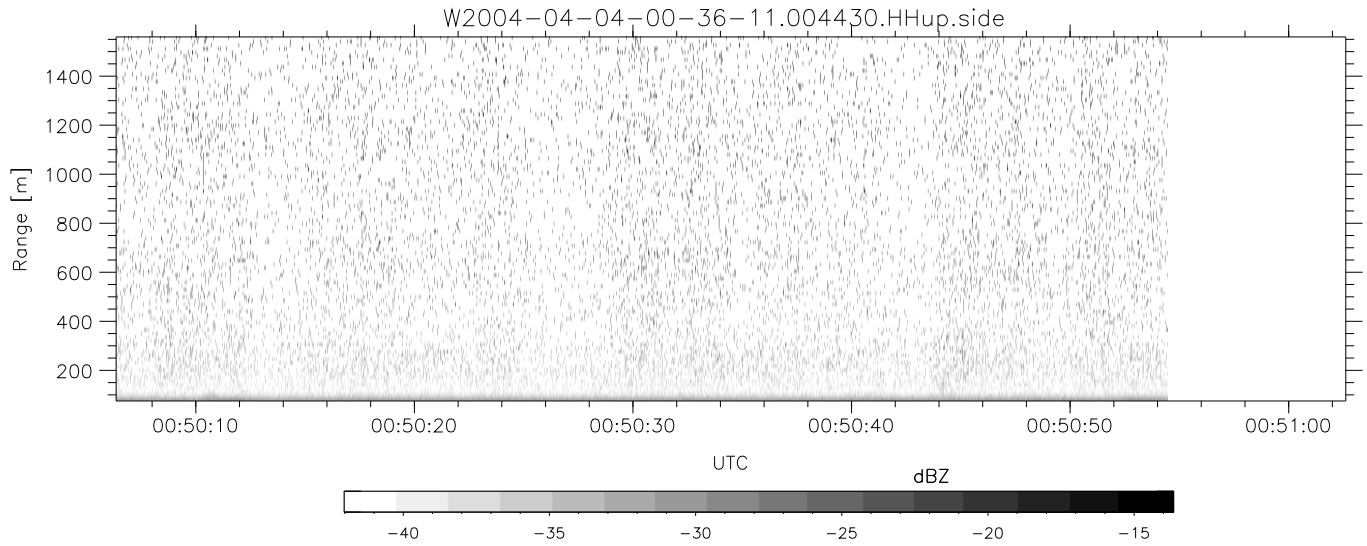
	Min	Max	Mean	Std	Varc%
hhN(dB)	-66.98	-63.83	-65.28	-75.39	9.8
vvN(dB)	-67.50	-63.63	-65.38	-75.39	10.0
hhL(dB)	-11.57	-5.82	-8.65	-14.45	26.3
vvL(dB)	3.20	6.00	4.94	-0.66	27.6
ppN(m/s)	-12.39	12.62	-0.00	4.18	
ppT(m/s)	-97.85	99.71	-0.03	33.06	
hh/vv(dB)	-99	-99	-99	-99	-99
vh/hh(dB)	-99	-99	-99	-99	-99
hv/vv(dB)	NaN	-34.28	-53.60	-45.20	692.
hnjmp(dB)			-0.15		
vnjmp(dB)			-0.14		



CIFEX 2004 Data (cal/250ns+2.5/100ns-3.5/500ns: 53.0,50.0)

W2004-04-04-00-36-11 - PPMAG4, IRIG:1/0/6  
 UTC: 00:36:10.79 to 00:50:54.47, Dur: 884s ???  
 TimeLngth: 885.71s, TimeInt: 23ms (42.1pps)  
 TimeCor=-13.0s, PPS(min,max,med): 41,43,42  
 Timeint/DSPdiff(mn,min,mx):23,20,37/21,20,27  
 Prof: 473 to 37792, NumProf(r/t): 16234/37319  
 ProcTime/Recs: 00:44:30-00:50:54/21085-37318  
 ADacqtime: 25ms; DRate: 236.4KB/s; Flags: 0, 0, 0  
 Pulse: 275ns, IFilt: 5.0MHz; ppPol: HH HV VV  
 TxPol: HHVV, PRF: 20 10 20 10 kHz, NoiseFlg:4,2  
 Range: Delay 75m, Spacing 15m, Gates 100  
 Ave. Pulses: 84, Rng/Prof Aspect@90m/s: 7.0

	Min	Max	Mean	Std	Varc%
hhN(dB)	-66.98	-63.83	-65.28	-75.39	9.8
vvN(dB)	-67.50	-63.63	-65.38	-75.39	10.0
hhL(dB)	-11.57	-5.82	-8.65	-14.45	26.3
vvL(dB)	3.20	6.00	4.94	-0.66	27.6
ppN(m/s)	-12.39	12.62	-0.00	4.18	
ppT(m/s)	-97.85	99.71	-0.03	33.06	
hh/vv(dB)	-99	-99	-99	-99	-99
vh/hh(dB)	-99	-99	-99	-99	-99
hv/vv(dB)	NaN	-34.28	-53.60	-45.20	692.
hnjmp(dB)			-0.15		
vnjmp(dB)			-0.14		



CIFEX 2004 Data (cal/250ns+2.5/100ns-3.5/500ns: 53.0,50.0)

W2004-04-04-00-36-11 - PPMAG4, IRIG:1/0/6  
 UTC: 00:36:10.79 to 00:50:54.47, Dur: 884s ???  
 TimeLngth: 885.71s, TimeInt: 23ms (42.1pps)  
 TimeCor=-13.0s, PPS(min,max,med): 41,43,42  
 Timeint/DSPdiff(mn,min,mx):23,20,37/21,20,27  
 Prof: 473 to 37792, NumProf(r/t): 16234/37319  
 ProcTime/Recs: 00:44:30-00:50:54/21085-37318  
 ADacqtime: 25ms; DRate: 236.4KB/s; Flags: 0, 0, 0  
 Pulse: 275ns, IFilt: 5.0MHz; ppPol: HH HV VV  
 TxPol: HHVV, PRF: 20 10 20 10 kHz, NoiseFlg:4,2  
 Range: Delay 75m, Spacing 15m, Gates 100  
 Ave. Pulses: 84, Rng/Prof Aspect@90m/s: 7.0

	Min	Max	Mean	Std	Varc%
hhN(dB)	-66.98	-63.83	-65.28	-75.39	9.8
vvN(dB)	-67.50	-63.63	-65.38	-75.39	10.0
hhL(dB)	-11.57	-5.82	-8.65	-14.45	26.3
vvL(dB)	3.20	6.00	4.94	-0.66	27.6
ppN(m/s)	-12.39	12.62	-0.00	4.18	
ppT(m/s)	-97.85	99.71	-0.03	33.06	
hh/vv(dB)	-99	-99	-99	-99	-99
vh/hh(dB)	-99	-99	-99	-99	-99
hv/vv(dB)	NaN	-34.28	-53.60	-45.20	692.
hnjmp(dB)			-0.15		
vnjmp(dB)			-0.14		