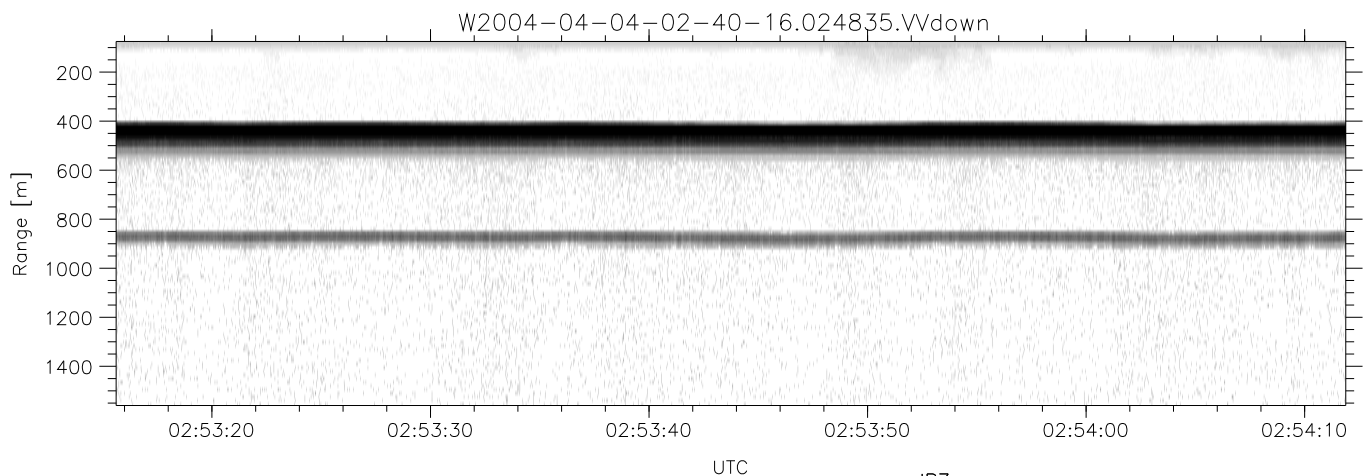
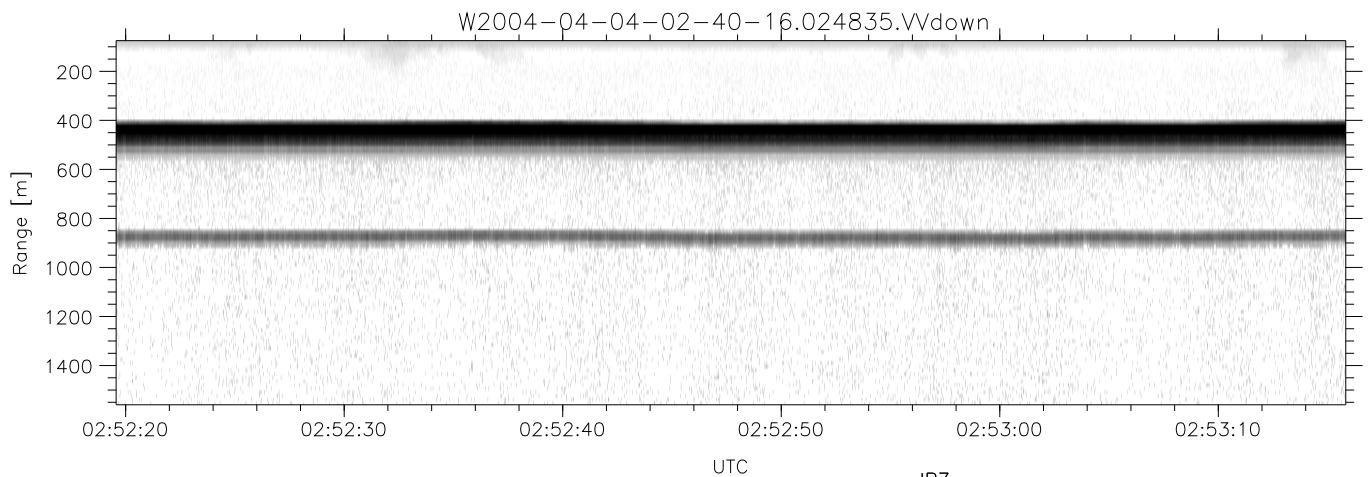
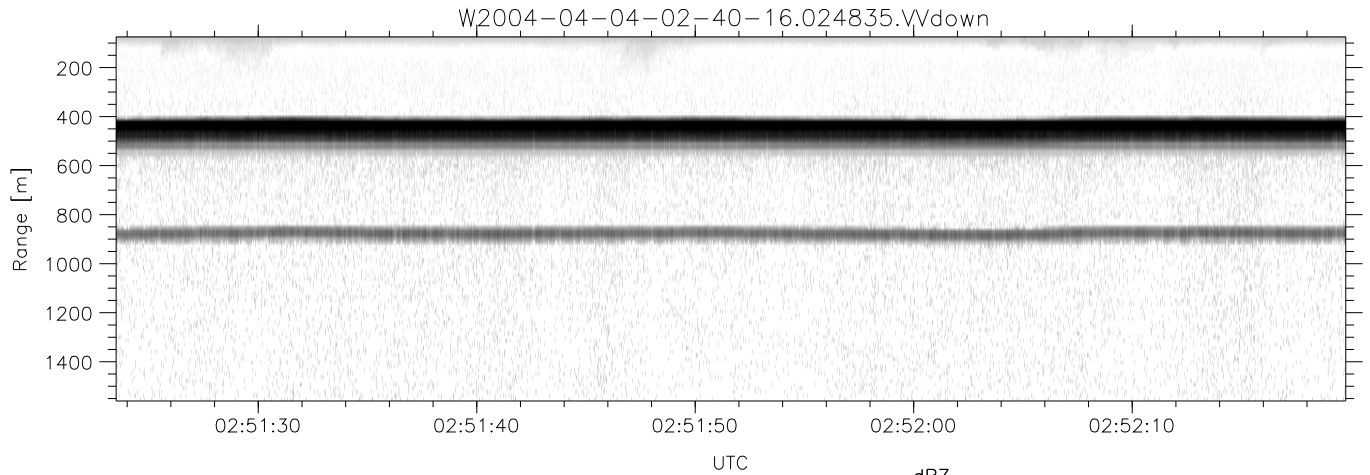


CIFEX 2004 Data (cal/250ns+2.5/100ns-3.5/500ns: 53.0,50.0)

W2004-04-04-02-40-16 - PPMAG4, IRIG:1/0/6
 UTC: 02:40:16.70 to 02:56:53.20, Dur: 997s
 TimeLngth: 997.21s, TimeInt: 23ms (42.3pps)
 TimeCor=-13.0s, PPS(min,max,med): 41,43,42
 Timeint/DSPdiff(mn,min,mx):23,20,38/21,20,38
 Prof: 339 to 42473, NumProf(r/t): 21049/42134
 ProcTime/Recs: 02:48:35-02:56:53/21085-42133
 ADacqtime: 25ms; DRate: 236.7KB/s; Flags: 0, 0, 0
 Pulse: 275ns, IFfilt: 5.0MHz; ppPol: HH HV VV
 TxPol: HHVV, PRF: 20 10 20 10 kHz, Noiseflg:1,1
 Range: Delay 75m, Spacing 15m, Gates 100
 Ave. Pulses: 84, Rng/Prof Aspect@90m/s: 7.0

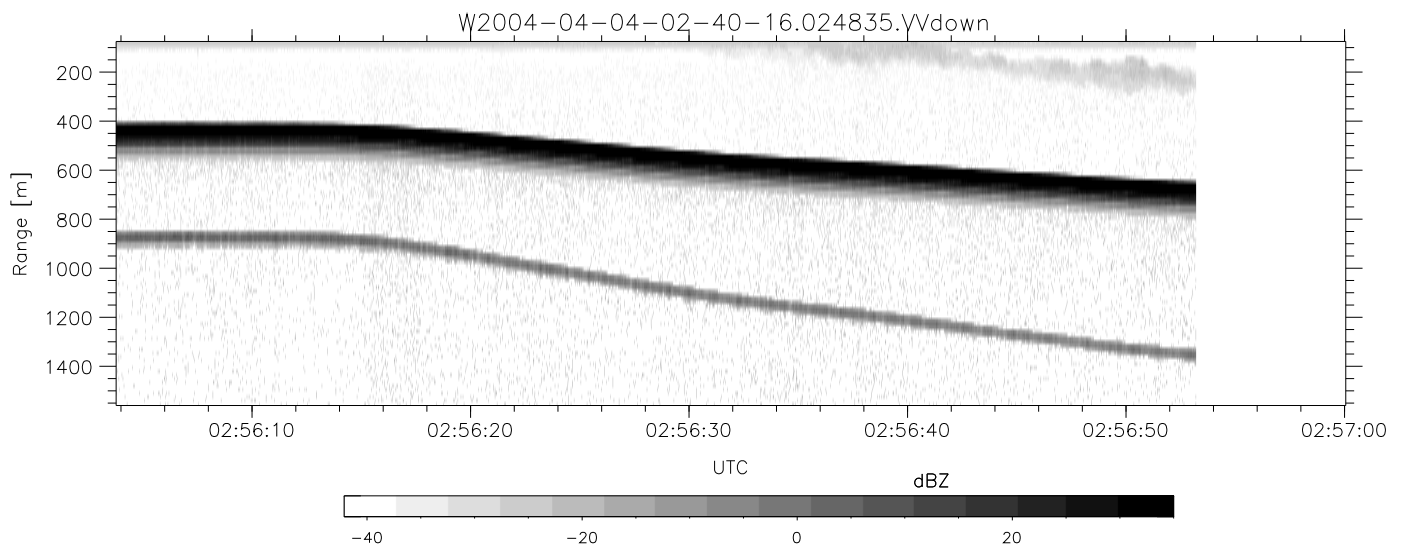
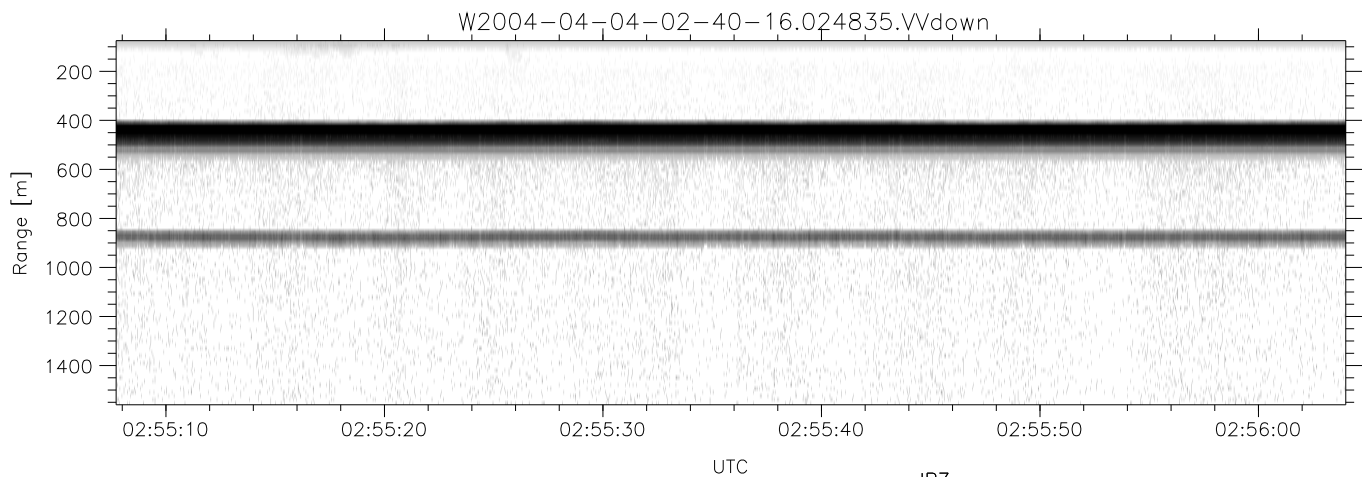
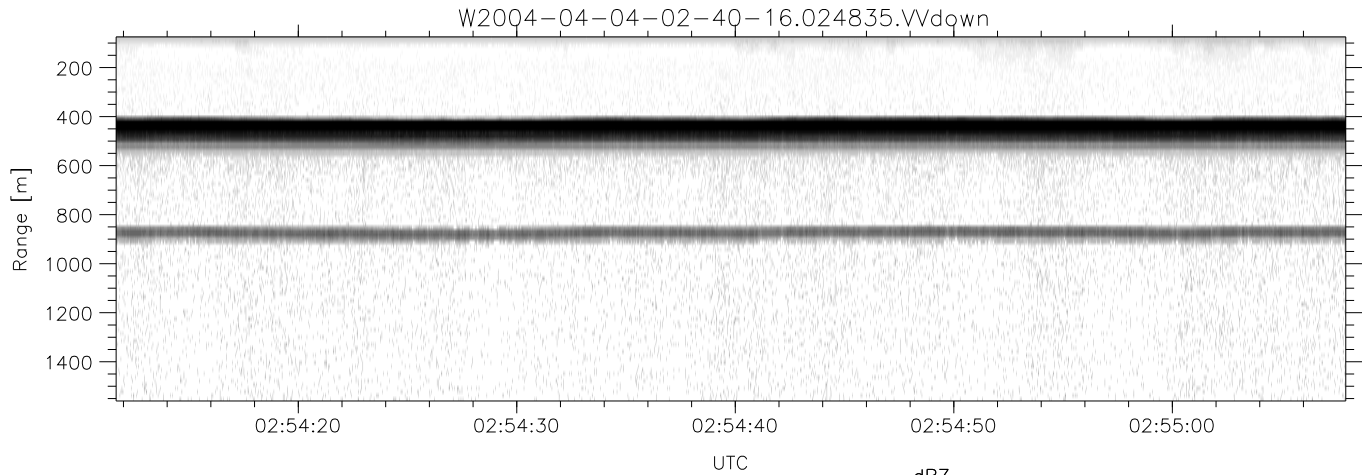
	Min	Max	Mean	Std	Varc%
hhN (dB)	-66.65	-63.31	-64.88	-74.99	9.8
vvN (dB)	-67.05	-63.40	-64.96	-75.03	9.8
hhL (dB)	-8.96	-1.47	-5.39	-10.82	28.6
vvL (dB)	5.48	6.00	5.99	-18.36	0.4
ppN (m/s)	-12.81	12.41	0.03	4.14	
ppT (m/s)	-101.1	98.01	0.23	32.73	
hh/vv (dB)	NaN	27.87	11.68	21.30	916.
vh/hh (dB)	-99	-99	-99	-99	-99
hv/vv (dB)	NaN	-34.17	-55.50	-46.41	810.
hnjmp (dB)			-0.14		
vnjmp (dB)			-0.15		



CIFEX 2004 Data (cal/250ns+2.5/100ns-3.5/500ns: 53.0,50.0)

W2004-04-04-02-40-16 - PPMAG4, IRIG:1/0/6
 UTC: 02:40:16.70 to 02:56:53.20, Dur: 997s
 TimeLngth: 997.21s, TimeInt: 23ms (42.3pps)
 TimeCor=-13.0s, PPS(min,max,med): 41,43,42
 Timeint/DSPdiff(mn,min,mx):23,20,38/21,20,38
 Prof: 339 to 42473, NumProf(r/t): 21049/42134
 ProcTime/Recs: 02:48:35-02:56:53/21085-42133
 ADacqtime: 25ms; DRate: 236.7KB/s; Flags: 0, 0, 0
 Pulse: 275ns, IFfilt: 5.0MHz; ppPol: HH HV VV
 TxPol: HHVV, PRF: 20 10 20 10 kHz, Noiseflg:1,1
 Range: Delay 75m, Spacing 15m, Gates 100
 Ave. Pulses: 84, Rng/Prof Aspect@90m/s: 7.0

	Min	Max	Mean	Std	Varc%
hhN(dB)	-66.65	-63.31	-64.88	-74.99	9.8
vvN(dB)	-67.05	-63.40	-64.96	-75.03	9.8
hhL(dB)	-8.96	-1.47	-5.39	-10.82	28.6
vvL(dB)	5.48	6.00	5.99	-18.36	0.4
ppN(m/s)	-12.81	12.41	0.03	4.14	
ppT(m/s)	-101.1	98.01	0.23	32.73	
hh/vv(dB)	NaN	27.87	11.68	21.30	916.
vh/hh(dB)	-99	-99	-99	-99	-99
hv/vv(dB)	NaN	-34.17	-55.50	-46.41	810.
hnjmp(dB)			-0.14		
vnjmp(dB)			-0.15		



CIFEX 2004 Data (cal/250ns+2.5/100ns-3.5/500ns: 53.0,50.0)

W2004-04-04-02-40-16 - PPMAG4, IRIG:1/0/6
 UTC: 02:40:16.70 to 02:56:53.20, Dur: 997s
 TimeLngth: 997.21s, TimeInt: 23ms (42.3pps)
 TimeCor=-13.0s, PPS(min,max,med): 41,43,42
 Timeint/DSPdiff(mn,min,mx):23,20,38/21,20,38
 Prof: 339 to 42473, NumProf(r/t): 21049/42134
 ProcTime/Recs: 02:48:35-02:56:53/21085-42133
 ADacqtime: 25ms; DRate: 236.7KB/s; Flags: 0, 0, 0
 Pulse: 275ns, IFilt: 5.0MHz; ppPol: HH HV VV
 TxPol: HHVV, PRF: 20 10 20 10 kHz, NoiseFlg:1,1
 Range: Delay 75m, Spacing 15m, Gates 100
 Ave. Pulses: 84, Rng/Prof Aspect@90m/s: 7.0

	Min	Max	Mean	Std	Varc%
hhN(dB)	-66.65	-63.31	-64.88	-74.99	9.8
vvN(dB)	-67.05	-63.40	-64.96	-75.03	9.8
hhL(dB)	-8.96	-1.47	-5.39	-10.82	28.6
vvL(dB)	5.48	6.00	5.99	-18.36	0.4
ppN(m/s)	-12.81	12.41	0.03	4.14	
ppT(m/s)	-101.1	98.01	0.23	32.73	
hh/vv(dB)	NaN	27.87	11.68	21.30	916.
vh/hh(dB)	-99	-99	-99	-99	-99
hv/vv(dB)	NaN	-34.17	-55.50	-46.41	810.
hn_jmp(dB)			-0.14		
vn_jmp(dB)			-0.15		