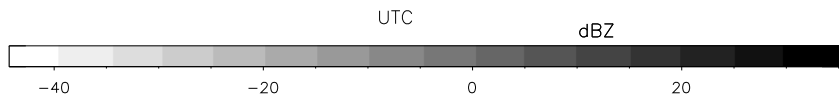
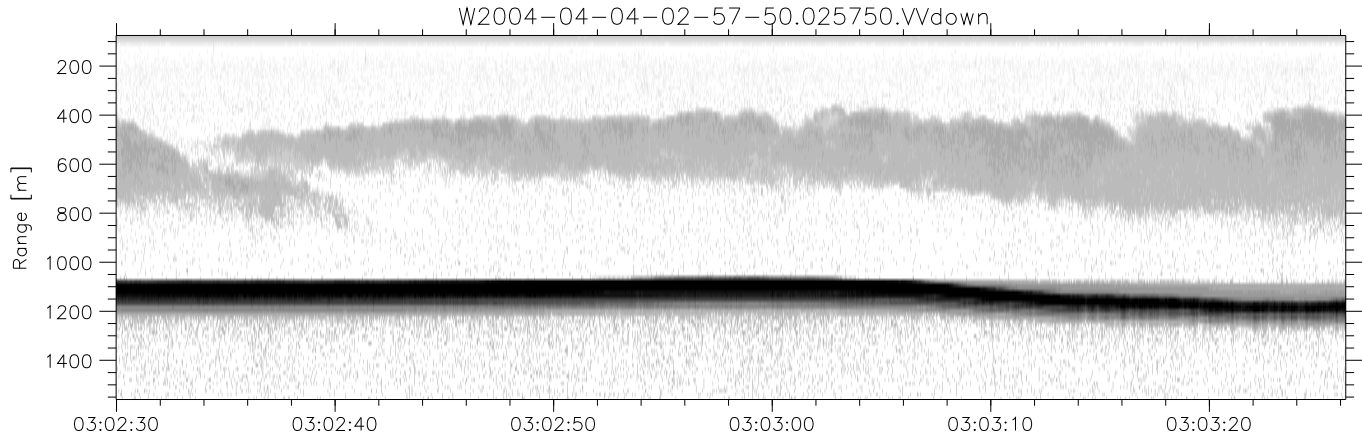
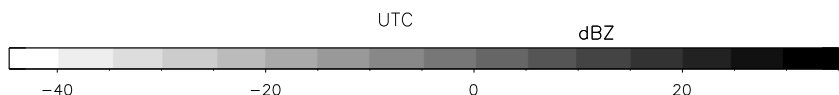
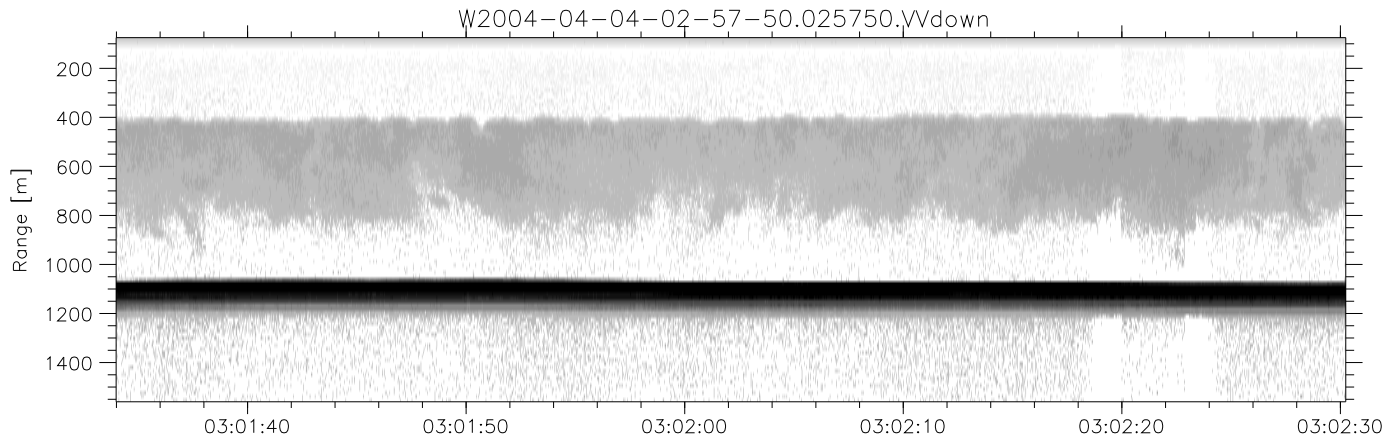
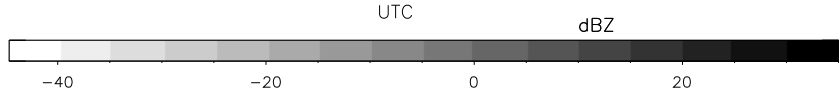
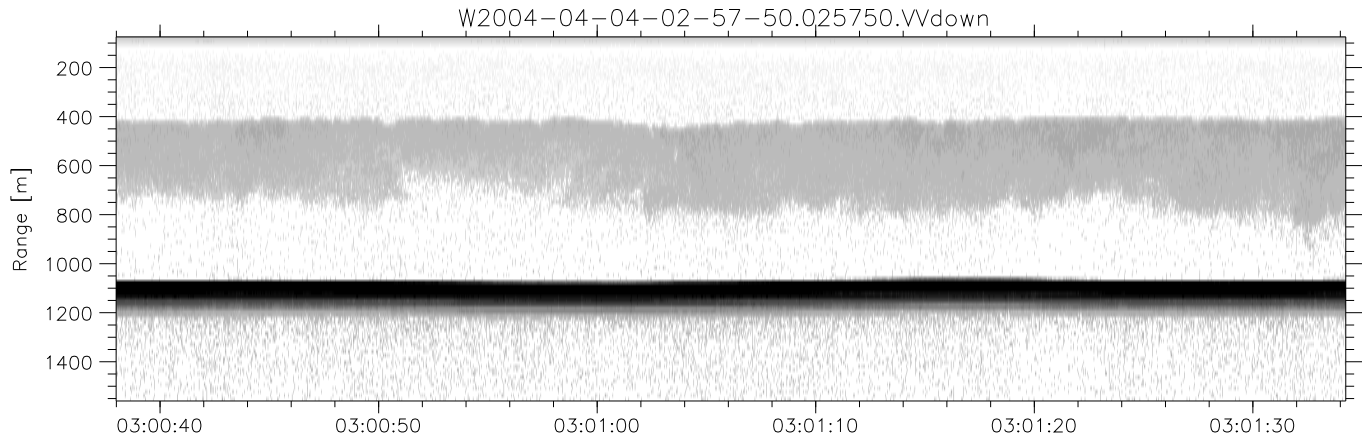


CIFEX 2004 Data (cal/250ns+2.5/100ns-3.5/500ns: 53.0,50.0)

W2004-04-04-02-57-50 - SPPMAG, IRIG:1/0/6  
 UTC: 02:57:50.03 to 03:15:10.61, Dur: 1040s  
 TimeLngth: 1040.54s, TimeInt: 29ms (34.3pps)  
 TimeCor=-13.0s, PPS(min,max,med): 34,35,34  
 Timeint/DSPdiff(mn,min,mx):29,29,29/29,29,29  
 Prof: 547 to 36228, NumProf(r/t): 17069/35681  
 ProcTime/Recs: 02:57:50-03:06:07/0-17068  
 ADacqtime: 32ms; DRate: 55.3KB/s; Flags: 0, 0, 0  
 Pulse: 275ns, IFfilt: 5.0MHz; ppPol: VV  
 TxPol: V, PRF: 20 20 20 10 kHz, NoiseFlg:1234  
 Range: Delay 75m, Spacing 15m, Gates 100  
 Ave. Pulses: 520, Rng/Prof Aspect@90m/s: 5.7

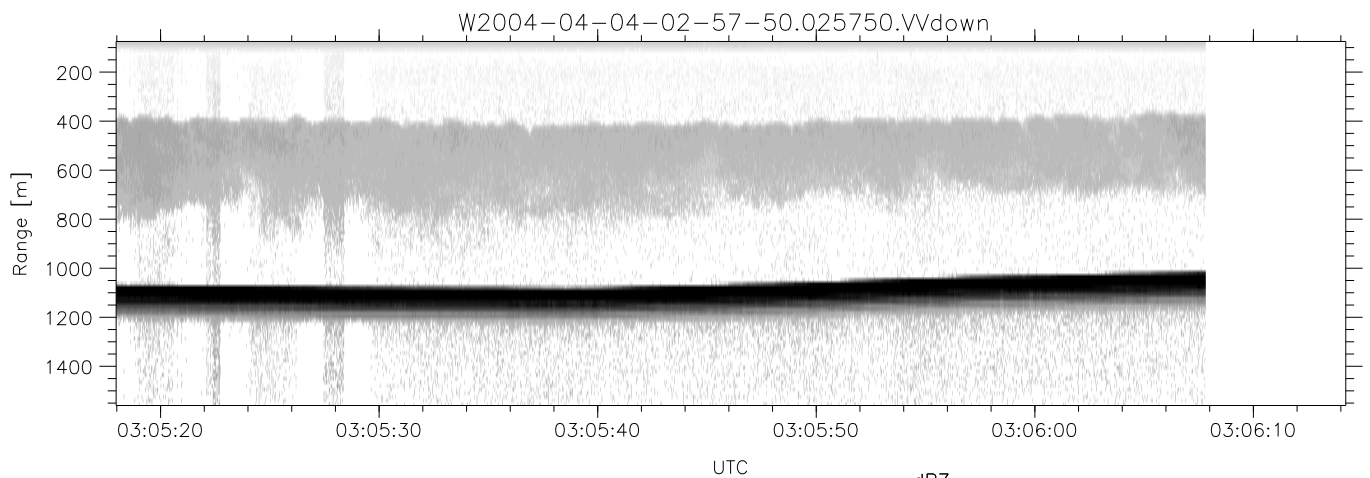
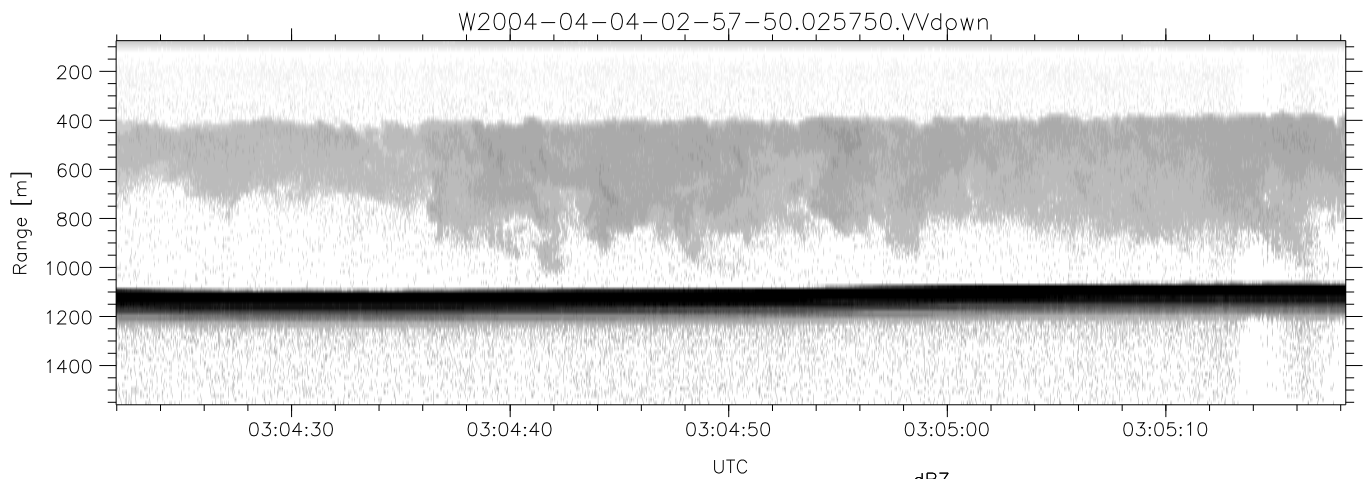
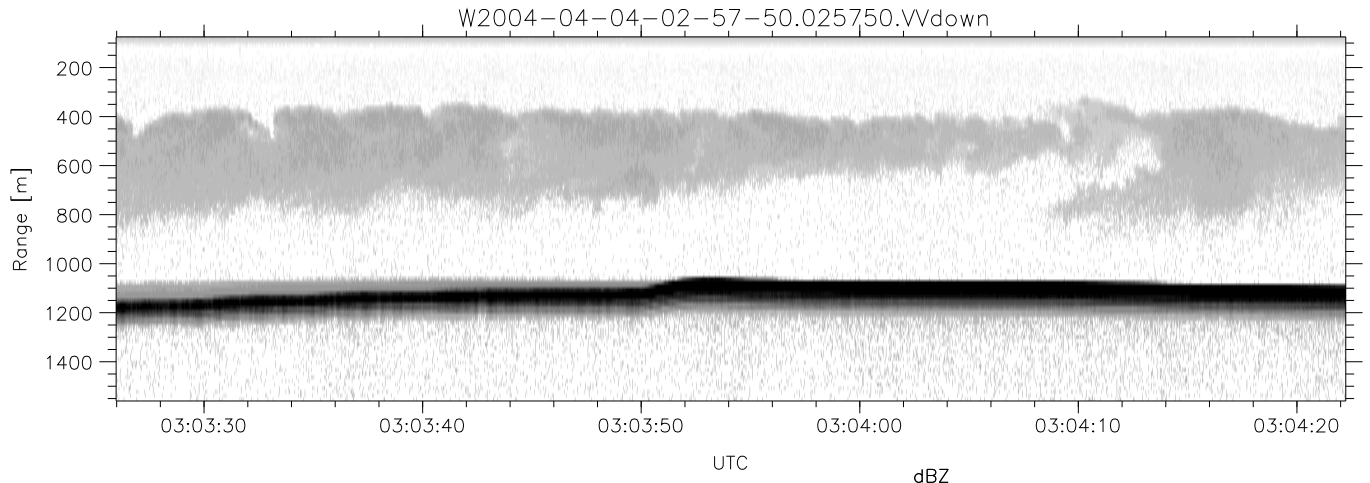
	Min	Max	Mean	Std	Varc%
hhN (dB)	-65.57	-63.94	-64.87	-78.22	4.6
vvN (dB)	-65.59	-63.69	-64.89	-77.93	5.0
vvL (dB)	3.27	6.00	5.59	-5.09	8.5
hvL (dB)	-12.78	-7.82	-11.26	-20.53	11.8
ppN (m/s)	-15.80	15.80	-0.11	9.13	
ppT (m/s)	-0.02	0.01	-0.00	0.00	
hv/vv (dB)	NaN	-34.17	-59.14	-48.70	1106
hn_jmp (dB)				0.15	
vn_jmp (dB)				0.15	



CIFEX 2004 Data (cal/250ns+2.5/100ns-3.5/500ns: 53.0,50.0)

W2004-04-04-02-57-50 - SPPMAG, IRIG:1/0/6  
 UTC: 02:57:50.03 to 03:15:10.61, Dur: 1040s  
 TimeLngth: 1040.54s, TimeInt: 29ms (34.3pps)  
 TimeCor=-13.0s, PPS(min,max,med): 34,35,34  
 Timeint/DSPdiff(mn,min,mx):29,29,29/29,29,29  
 Prof: 547 to 36228, NumProf(r/t): 17069/35681  
 ProcTime/Recs: 02:57:50-03:06:07/0-17068  
 ADacqtime: 32ms; DRate: 55.3KB/s; Flags: 0, 0, 0  
 Pulse: 275ns, IFilt: 5.0MHz; ppPol: VV  
 TxPol: V, PRF: 20 20 20 10 kHz, NoiseFlg:1234  
 Range: Delay 75m, Spacing 15m, Gates 100  
 Ave. Pulses: 520, Rng/Prof Aspect@90m/s: 5.7

	Min	Max	Mean	Std	Varc%
hhN (dB)	-65.57	-63.94	-64.87	-78.22	4.6
vvN (dB)	-65.59	-63.69	-64.89	-77.93	5.0
vvL (dB)	3.27	6.00	5.59	-5.09	8.5
hvL (dB)	-12.78	-7.82	-11.26	-20.53	11.8
ppN (m/s)	-15.80	15.80	-0.11	9.13	
ppT (m/s)	-0.02	0.01	-0.00	0.00	
hv/vv (dB)	NaN	-34.17	-59.14	-48.70	1106
hn_jmp (dB)			0.15		
vn_jmp (dB)			0.15		



CIFEX 2004 Data (cal/250ns+2.5/100ns-3.5/500ns: 53.0,50.0)

W2004-04-04-02-57-50 - SPPMAG, IRIG:1/0/6  
 UTC: 02:57:50.03 to 03:15:10.61, Dur: 1040s  
 TimeLngth: 1040.54s, TimeInt: 29ms (34.3pps)  
 TimeCor=-13.0s, PPS(min,max,med): 34,35,34  
 Timeint/DSPdiff(mn,min,mx):29,29,29/29,29,29  
 Prof: 547 to 36228, NumProf(r/t): 17069/35681  
 ProcTime/Recs: 02:57:50-03:06:07/0-17068  
 ADacqtime: 32ms; DRate: 55.3KB/s; Flags: 0, 0, 0  
 Pulse: 275ns, IFfilt: 5.0MHz; ppPol: VV  
 TxPol: V, PRF: 20 20 20 10 kHz, NoiseFlg:1234  
 Range: Delay 75m, Spacing 15m, Gates 100  
 Ave. Pulses: 520, Rng/Prof Aspect@90m/s: 5.7

	Min	Max	Mean	Std	Varc%
hhN(dB)	-65.57	-63.94	-64.87	-78.22	4.6
vvN(dB)	-65.59	-63.69	-64.89	-77.93	5.0
vvL(dB)	3.27	6.00	5.59	-5.09	8.5
hvL(dB)	-12.78	-7.82	-11.26	-20.53	11.8
ppN(m/s)	-15.80	15.80	-0.11	9.13	
ppT(m/s)	-0.02	0.01	-0.00	0.00	
hv/vv(dB)	NaN	-34.17	-59.14	-48.70	1106
hnjmp(dB)				0.15	
vnjmp(dB)				0.15	