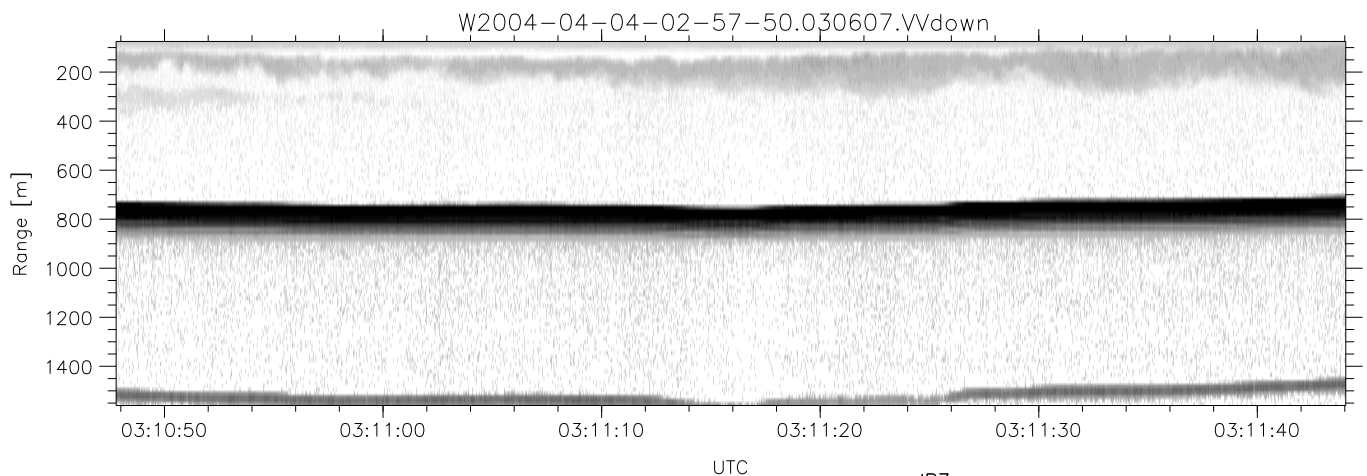
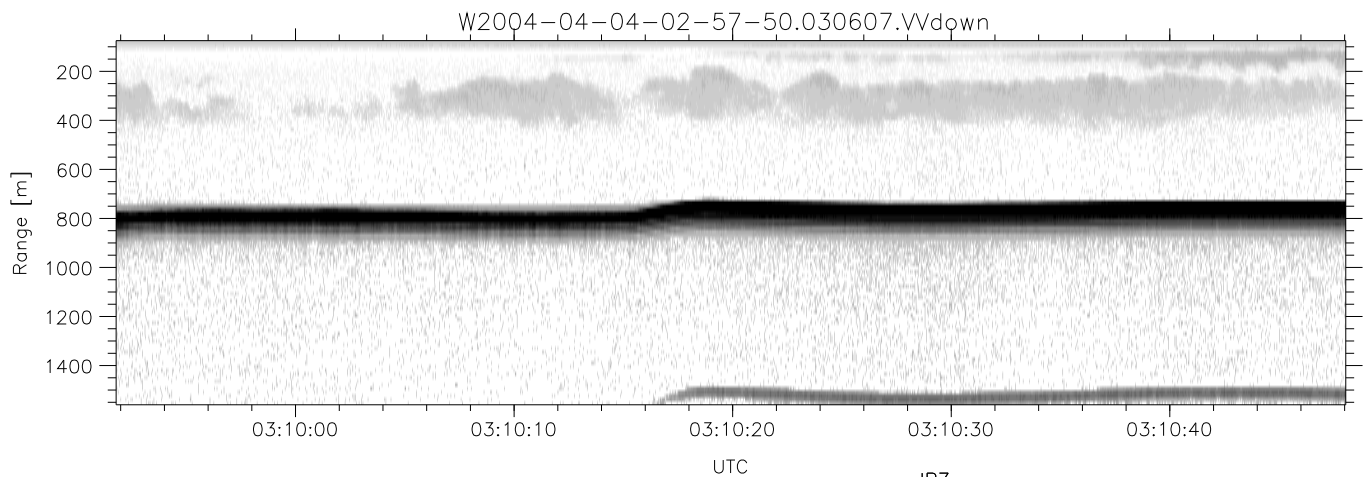
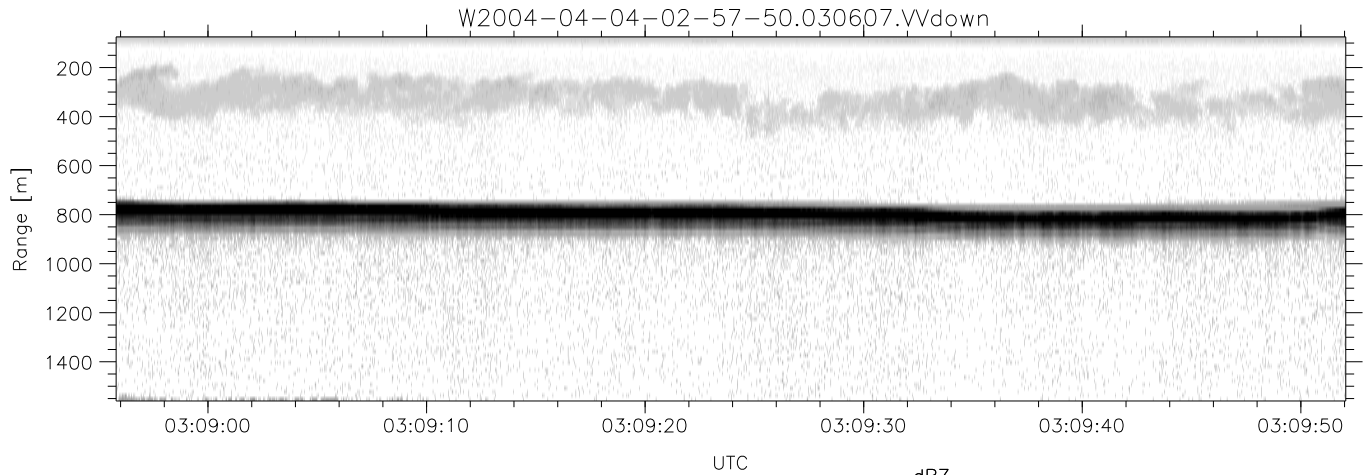


CIFEX 2004 Data (cal/250ns+2.5/100ns-3.5/500ns: 53.0,50.0)

W2004-04-04-02-57-50 - SPPMAG, IRIG:1/0/6  
 UTC: 02:57:50.03 to 03:15:10.61, Dur: 1040s  
 TimeLngth: 1040.53s, TimeInt: 29ms (34.3pps)  
 TimeCor=-13.0s, PPS(min,max,med): 34,35,34  
 Timeint/DSPdiff(mn,min,mx):29,29,29/29,29,29  
 Prof: 547 to 36228, NumProf(r/t): 17069/35681  
 ProcTime/Recs: 03:06:07-03:14:25/17069-34137  
 ADacqtime: 32ms; DRate: 55.3KB/s; Flags: 0, 0, 0  
 Pulse: 275ns, IFfilt: 5.0MHz; ppPol: VV  
 TxPol: V, PRF: 20 20 20 10 kHz, NoiseFlg:1234  
 Range: Delay 75m, Spacing 15m, Gates 100  
 Ave. Pulses: 520, Rng/Prof Aspect@90m/s: 5.7

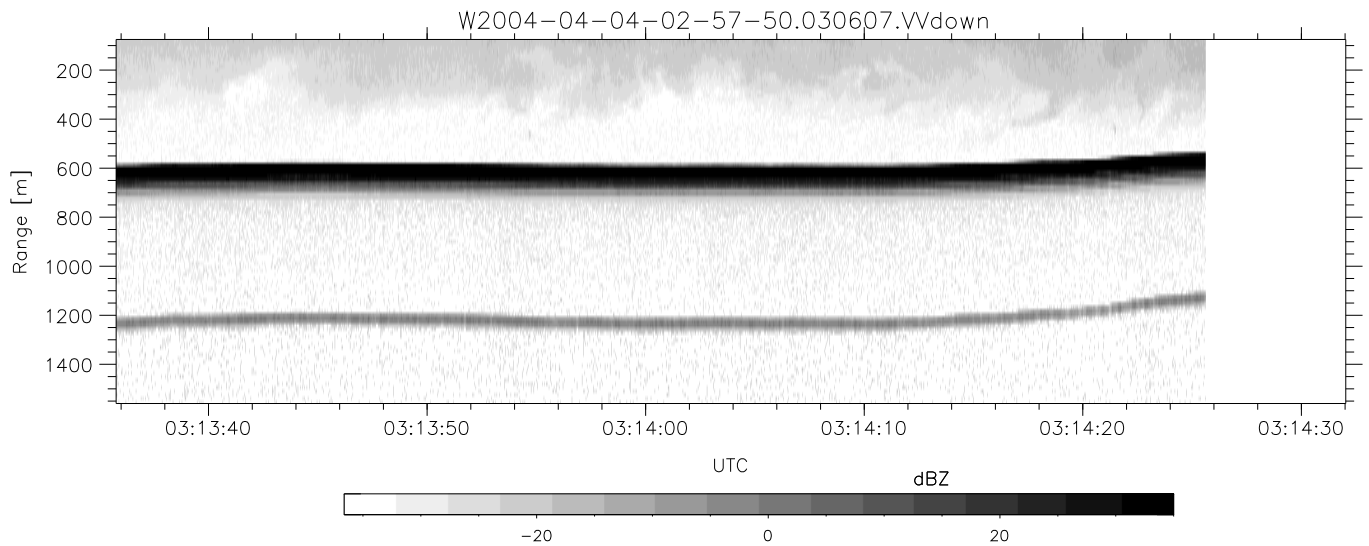
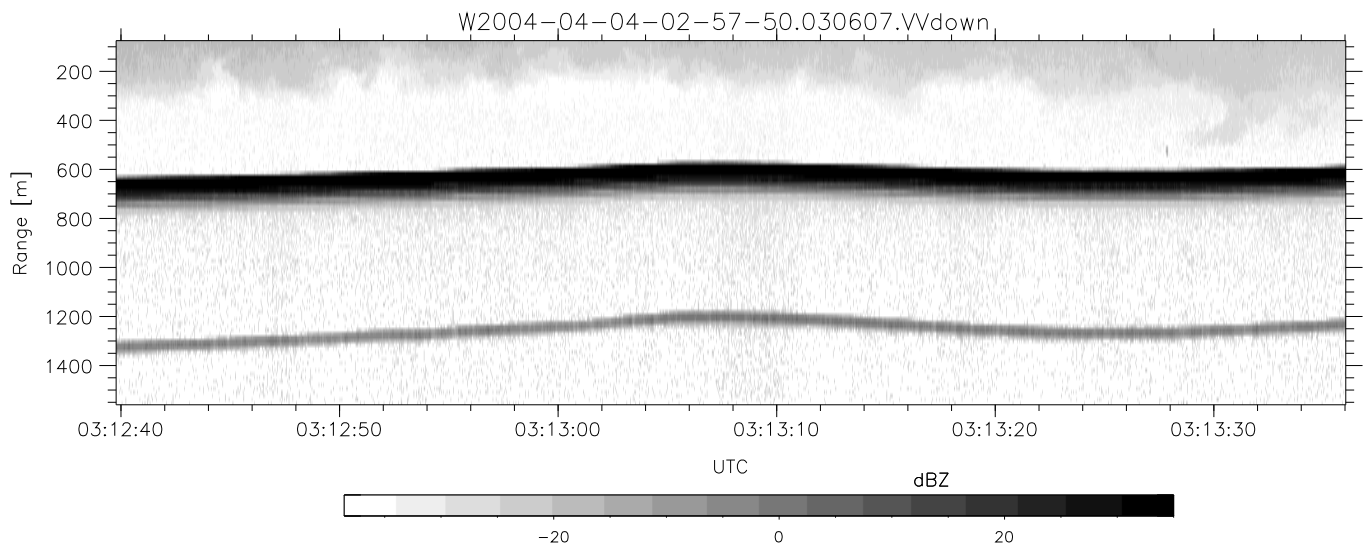
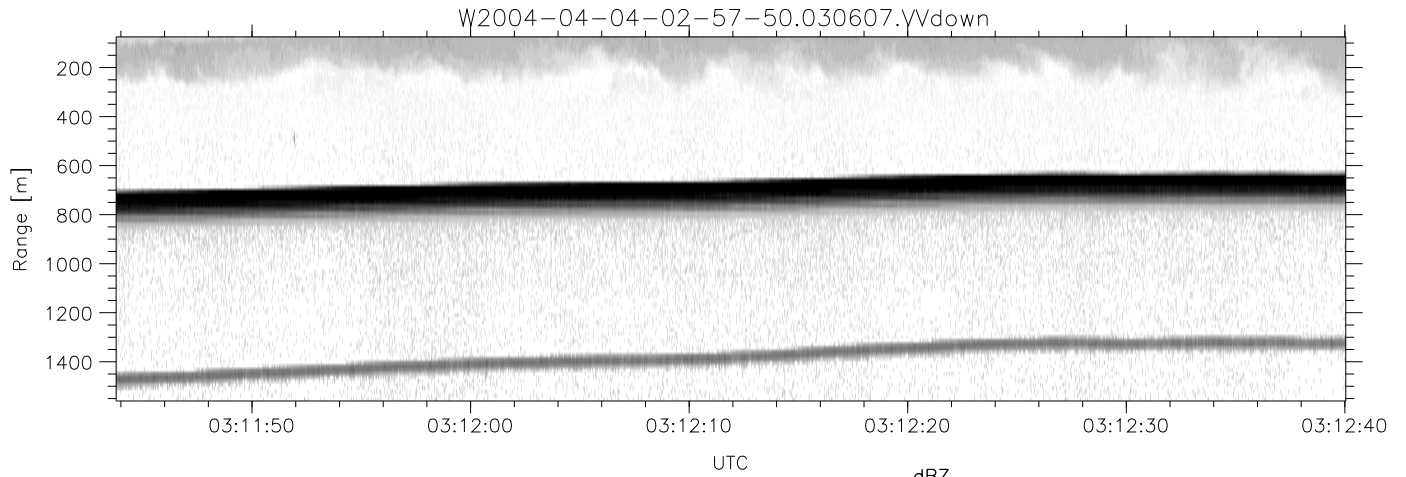
	Min	Max	Mean	Std	Varc%
hhN(dB)	-65.67	-64.15	-64.93	-78.66	4.2
vvN(dB)	-65.70	-64.25	-64.92	-78.63	4.3
vvL(dB)	-0.72	6.00	5.03	-1.26	23.5
hvL(dB)	-12.71	-3.98	-6.49	-11.17	34.0
ppN(m/s)	-15.80	15.80	0.01	8.89	
ppT(m/s)	-0.02	0.01	-0.00	0.00	
hv/vv(dB)	NaN	-36.52	-56.74	-47.51	838.
hn_jmp(dB)			-0.15		
vn_jmp(dB)			-0.15		



CIFEX 2004 Data (cal/250ns+2.5/100ns-3.5/500ns: 53.0,50.0)

W2004-04-04-02-57-50 - SPPMAG, IRIG:1/0/6  
 UTC: 02:57:50.03 to 03:15:10.61, Dur: 1040s  
 TimeLngth: 1040.53s, TimeInt: 29ms (34.3pps)  
 TimeCor=-13.0s, PPS(min,max,med): 34,35,34  
 Timeint/DSPdiff(mn,min,mx):29,29,29/29,29,29  
 Prof: 547 to 36228, NumProf(r/t): 17069/35681  
 ProcTime/Recs: 03:06:07-03:14:25/17069-34137  
 ADacqtime: 32ms; DRate: 55.3KB/s; Flags: 0, 0, 0  
 Pulse: 275ns, IFfilt: 5.0MHz; ppPol: VV  
 TxPol: V, PRF: 20 20 20 10 kHz, NoiseFlg:1234  
 Range: Delay 75m, Spacing 15m, Gates 100  
 Ave. Pulses: 520, Rng/Prof Aspect@90m/s: 5.7

	Min	Max	Mean	Std	Varc%
hhN(dB)	-65.67	-64.15	-64.93	-78.66	4.2
vvN(dB)	-65.70	-64.25	-64.92	-78.63	4.3
vvL(dB)	-0.72	6.00	5.03	-1.26	23.5
hvL(dB)	-12.71	-3.98	-6.49	-11.17	34.0
ppN(m/s)	-15.80	15.80	0.01	8.89	
ppT(m/s)	-0.02	0.01	-0.00	0.00	
hv/vv(dB)	NaN	-36.52	-56.74	-47.51	838.
hn_jmp(dB)			-0.15		
vn_jmp(dB)			-0.15		



CIFEX 2004 Data (cal/250ns+2.5/100ns-3.5/500ns: 53.0,50.0)

W2004-04-04-02-57-50 - SPPMAG, IRIG:1/0/6  
 UTC: 02:57:50.03 to 03:15:10.61, Dur: 1040s  
 TimeLngth: 1040.53s, TimeInt: 29ms (34.3pps)  
 TimeCor=-13.0s, PPS(min,max,med): 34,35,34  
 Timeint/DSPdiff(mn,min,mx):29,29,29/29,29,29  
 Prof: 547 to 36228, NumProf(r/t): 17069/35681  
 ProcTime/Recs: 03:06:07-03:14:25/17069-34137  
 ADacqtime: 32ms; DRate: 55.3KB/s; Flags: 0, 0, 0  
 Pulse: 275ns, IFfilt: 5.0MHz; ppPol: VV  
 TxPol: V, PRF: 20 20 20 10 kHz, NoiseFlg:1234  
 Range: Delay 75m, Spacing 15m, Gates 100  
 Ave. Pulses: 520, Rng/Prof Aspect@90m/s: 5.7

	Min	Max	Mean	Std	Varc%
hhN(dB)	-65.67	-64.15	-64.93	-78.66	4.2
vvN(dB)	-65.70	-64.25	-64.92	-78.63	4.3
vvL(dB)	-0.72	6.00	5.03	-1.26	23.5
hvL(dB)	-12.71	-3.98	-6.49	-11.17	34.0
ppN(m/s)	-15.80	15.80	0.01	8.89	
ppT(m/s)	-0.02	0.01	-0.00	0.00	
hv/vv(dB)	NaN	-36.52	-56.74	-47.51	838.
hn_jmp(dB)			-0.15		
vn_jmp(dB)			-0.15		