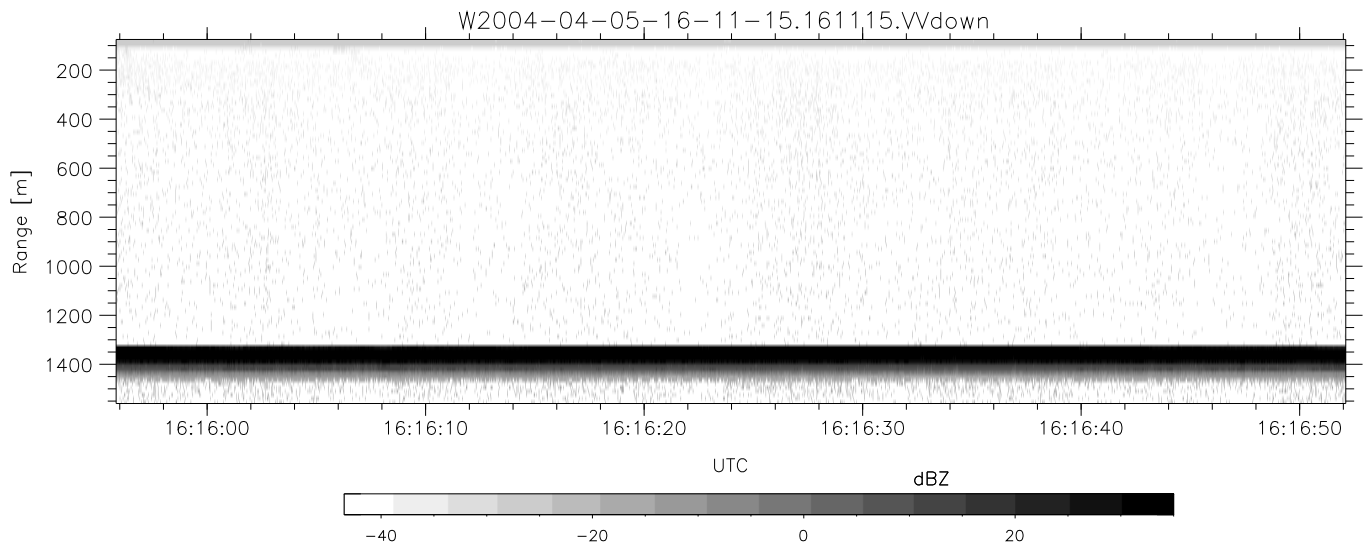
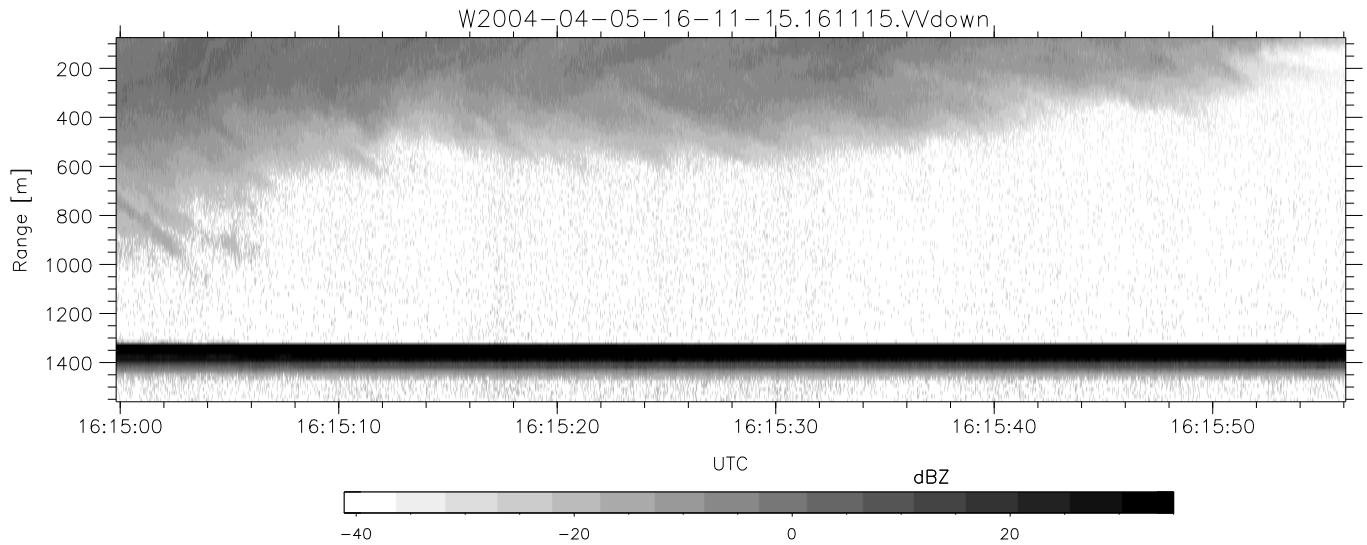
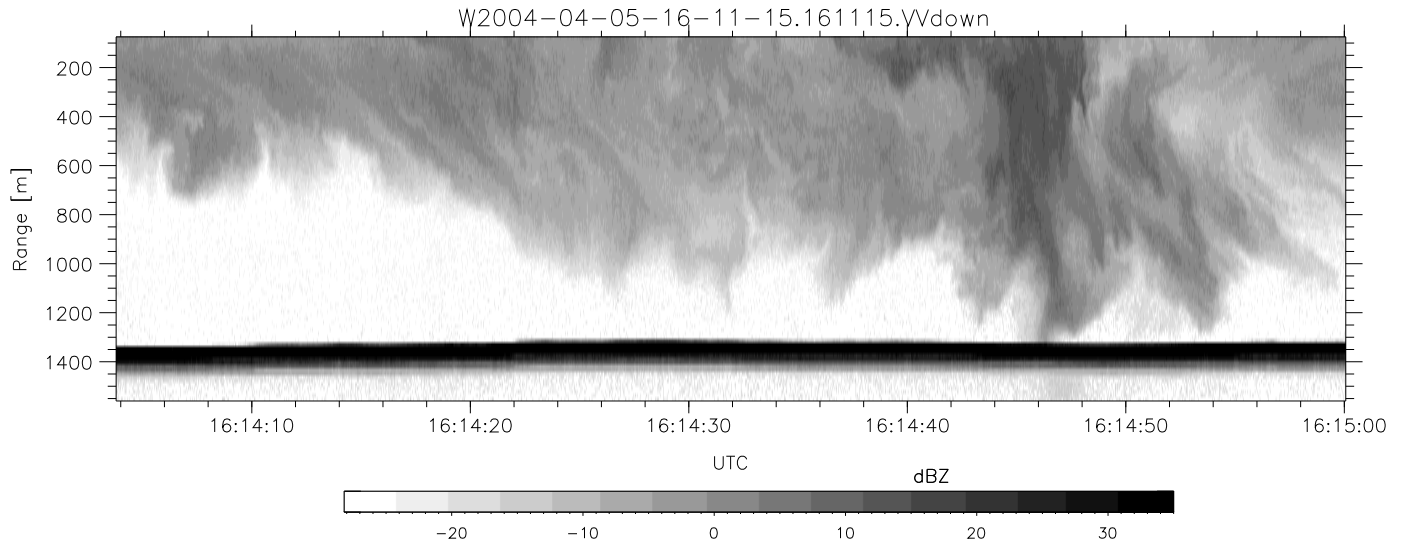


CIFEX 2004 Data (cal/250ns+2.5/100ns-3.5/500ns: 53.0,50.0)

W2004-04-05-16-11-15 - PPMAG4, IRIG:1/0/2
 UTC: 16:11:15.75 to 17:08:47.42, Dur: 3452s
 TimeLngth: 3451.71s, TimeInt: 28ms (35.4pps)
 TimeCor=-13.0s, PPS(min,max,med): 35,36,35
 Timeint/DSPdiff(mn,min,mx):28,28,28/28,28,28
 Prof: 335 to 122698, NumProf(r/t): 17571/122363
 ProcTime/Recs: 16:11:15-16:19:31/0-17570
 ADacqtime: 25ms; DRate: 198.4KB/s; Flags: 0, 0, 0
 Pulse: 275ns, IFfilt: 5.0MHz; ppPol: HH HV VV
 TxPol: HHVV, PRF: 20 10 20 10 kHz, Noiseflg:4,1
 Range: Delay 75m, Spacing 15m, Gates 100
 Ave. Pulses: 84, Rng/Prof Aspect@90m/s: 5.9

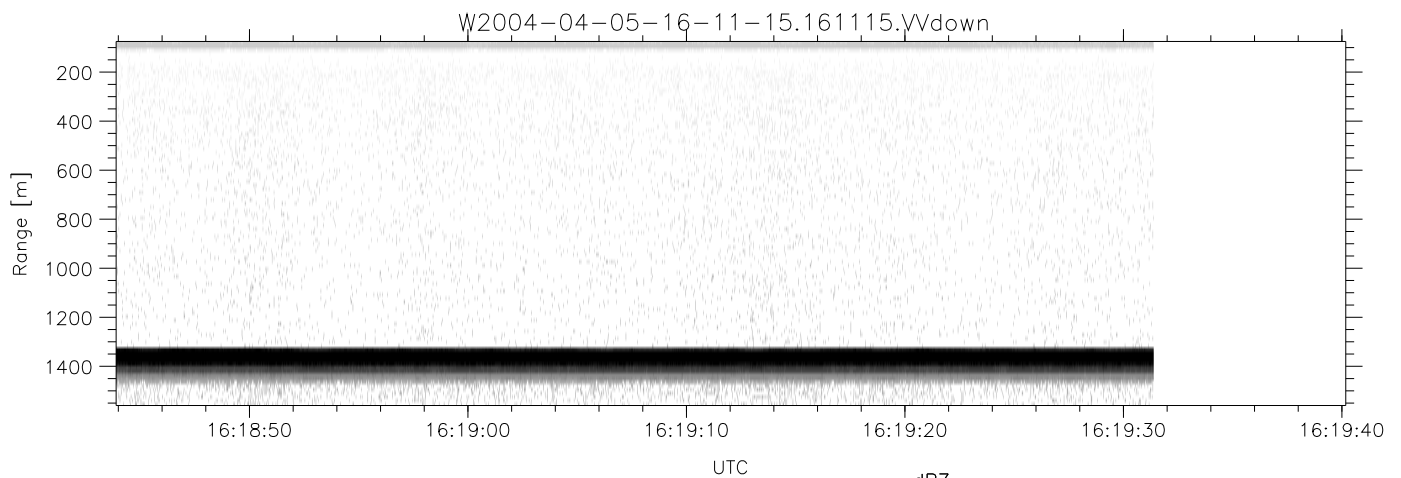
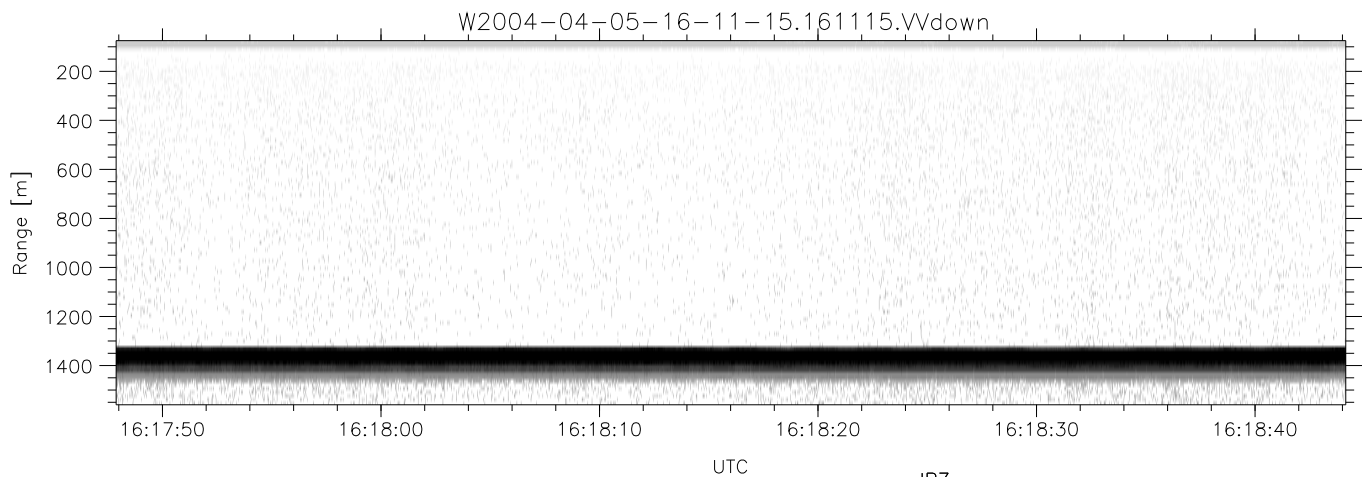
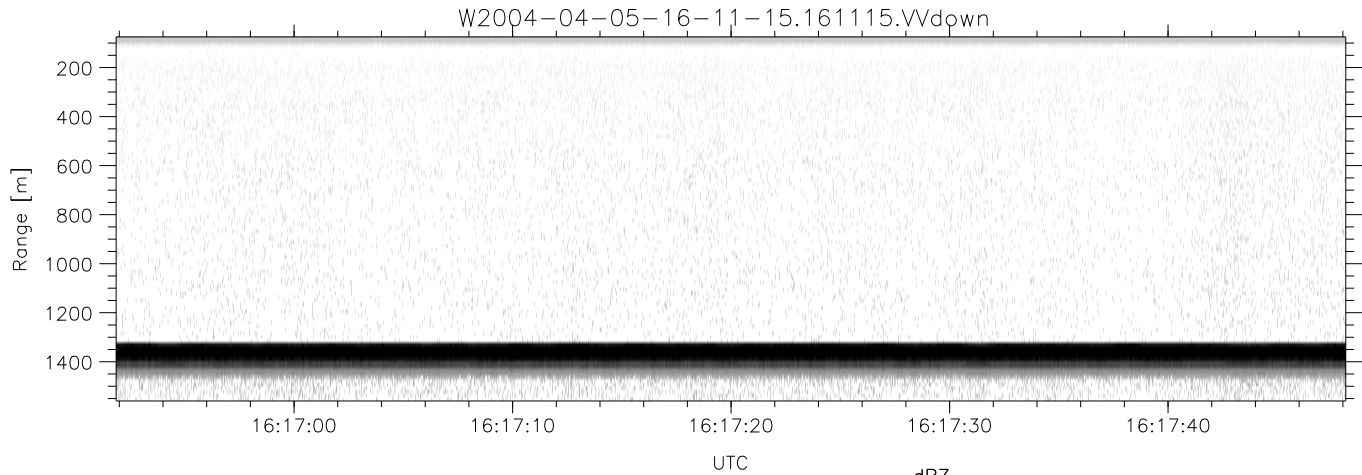
	Min	Max	Mean	Std	Varc%
hhN (dB)	-67.25	-63.72	-65.29	-75.33	9.9
vvN (dB)	-67.08	-63.59	-65.19	-75.17	10.1
hhL (dB)	-23.61	0.94	-3.27	-5.89	54.7
vvL (dB)	-2.15	6.00	5.75	-2.13	16.3
ppN (m/s)	-12.45	12.71	0.01	4.14	
ppT (m/s)	-98.32	100.41	0.06	32.70	
hh/vv (dB)	NaN	46.80	10.13	26.47	4304
vh/hh (dB)	NaN	-25.79	-31.83	-34.21	57.7
hv/vv (dB)	NaN	-32.96	-47.99	-43.13	305.
hn_jmp (dB)				0.15	
vn_jmp (dB)				0.16	



CIFEX 2004 Data (cal/250ns+2.5/100ns-3.5/500ns: 53.0,50.0)

W2004-04-05-16-11-15 - PPMAG4, IRIG:1/0/2
 UTC: 16:11:15.75 to 17:08:47.42, Dur: 3452s
 TimeLngth: 3451.71s, TimeInt: 28ms (35.4pps)
 TimeCor=-13.0s, PPS(min,max,med): 35,36,35
 Timeint/DSPdiff(mn,min,mx):28,28,28/28,28,28
 Prof: 335 to 122698, NumProf(r/t): 17571/122363
 ProcTime/Recs: 16:11:15-16:19:31/0-17570
 ADacqtime: 25ms; DRate: 198.4KB/s; Flags: 0, 0, 0
 Pulse: 275ns, IFilt: 5.0MHz; ppPol: HH HV VV
 TxPol: HHVV, PRF: 20 10 20 10 kHz, NoiseFlg:4,1
 Range: Delay 75m, Spacing 15m, Gates 100
 Ave. Pulses: 84, Rng/Prof Aspect@90m/s: 5.9

	Min	Max	Mean	Std	Varc%
hhN (dB)	-67.25	-63.72	-65.29	-75.33	9.9
vvN (dB)	-67.08	-63.59	-65.19	-75.17	10.1
hhL (dB)	-23.61	0.94	-3.27	-5.89	54.7
vvL (dB)	-2.15	6.00	5.75	-2.13	16.3
ppN (m/s)	-12.45	12.71	0.01	4.14	
ppT (m/s)	-98.32	100.41	0.06	32.70	
hh/vv (dB)	NaN	46.80	10.13	26.47	4304
vh/hh (dB)	NaN	-25.79	-31.83	-34.21	57.7
hv/vv (dB)	NaN	-32.96	-47.99	-43.13	305.
hnjmp (dB)				0.15	
vnjmp (dB)				0.16	



CIFEX 2004 Data (cal/250ns+2.5/100ns-3.5/500ns: 53.0,50.0)

W2004-04-05-16-11-15 - PPMAG4, IRIG:1/0/2
 UTC: 16:11:15.75 to 17:08:47.42, Dur: 3452s
 TimeLngth: 3451.71s, TimeInt: 28ms (35.4pps)
 TimeCor=-13.0s, PPS(min,max,med): 35,36,35
 Timeint/DSPdiff(mn,min,mx):28,28,28/28,28,28
 Prof: 335 to 122698, NumProf(r/t): 17571/122363
 ProcTime/Recs: 16:11:15-16:19:31/0-17570
 ADacqtime: 25ms; DRate: 198.4KB/s; Flags: 0, 0, 0
 Pulse: 275ns, IFfilt: 5.0MHz; ppPol: HH HV VV
 TxPol: HHVV, PRF: 20 10 20 10 kHz, Noiseflg:4,1
 Range: Delay 75m, Spacing 15m, Gates 100
 Ave. Pulses: 84, Rng/Prof Aspect@90m/s: 5.9

	Min	Max	Mean	Std	Varc%
hhN (dB)	-67.25	-63.72	-65.29	-75.33	9.9
vvN (dB)	-67.08	-63.59	-65.19	-75.17	10.1
hhL (dB)	-23.61	0.94	-3.27	-5.89	54.7
vvL (dB)	-2.15	6.00	5.75	-2.13	16.3
ppN (m/s)	-12.45	12.71	0.01	4.14	
ppT (m/s)	-98.32	100.41	0.06	32.70	
hh/vv (dB)	NaN	46.80	10.13	26.47	4304
vh/hh (dB)	NaN	-25.79	-31.83	-34.21	57.7
hv/vv (dB)	NaN	-32.96	-47.99	-43.13	305.
hnjmp (dB)				0.15	
vnjmp (dB)				0.16	