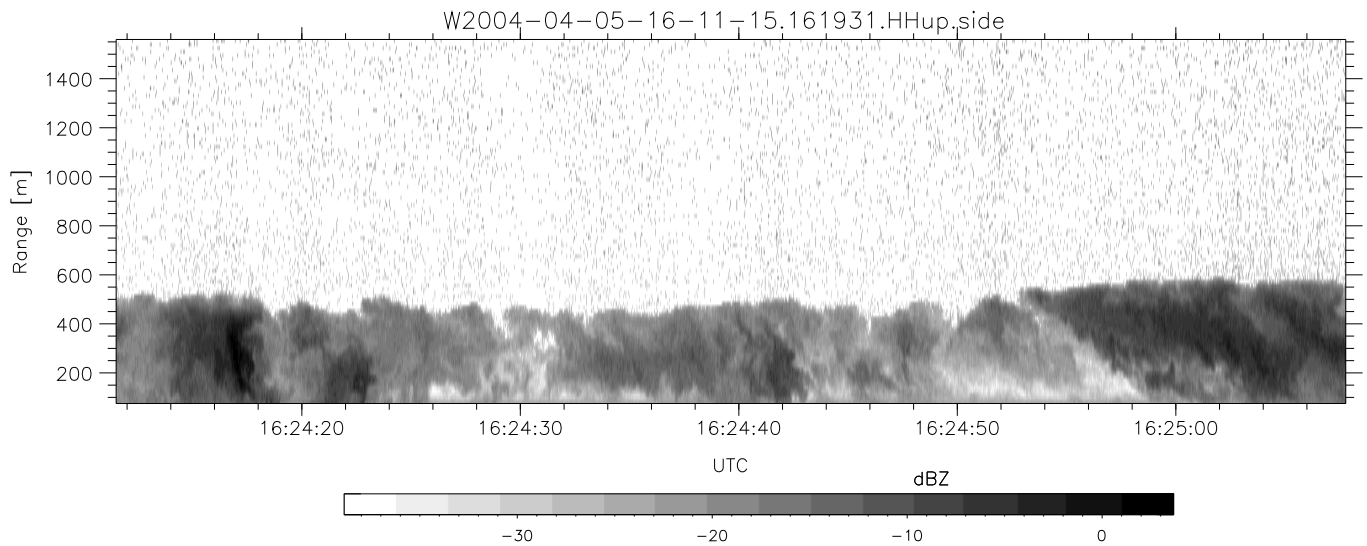
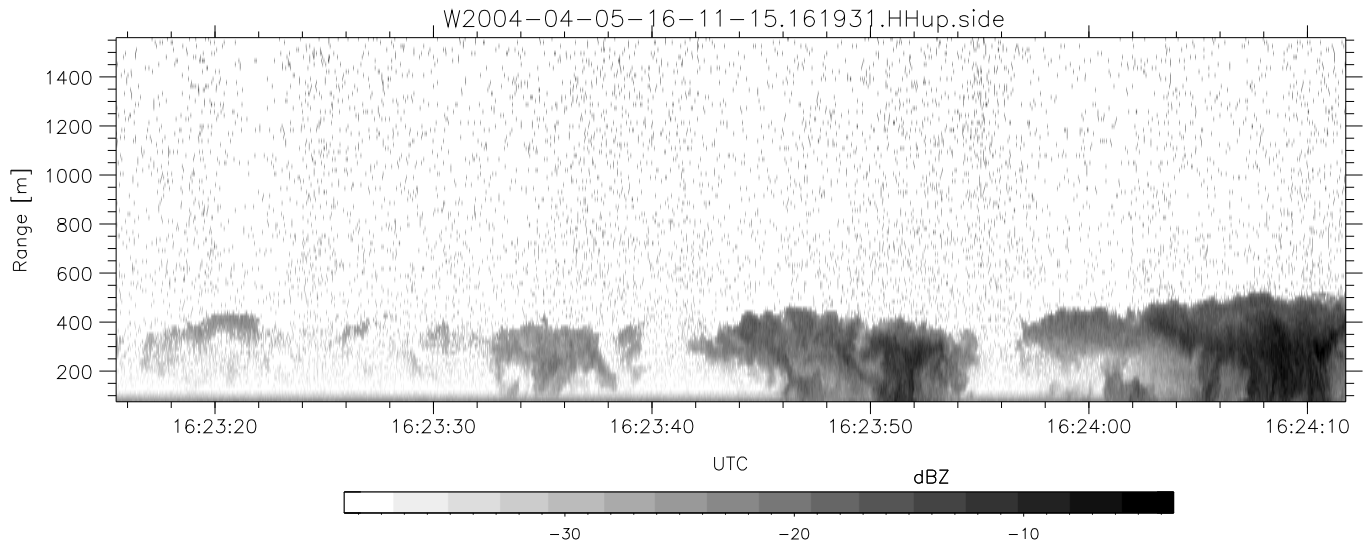
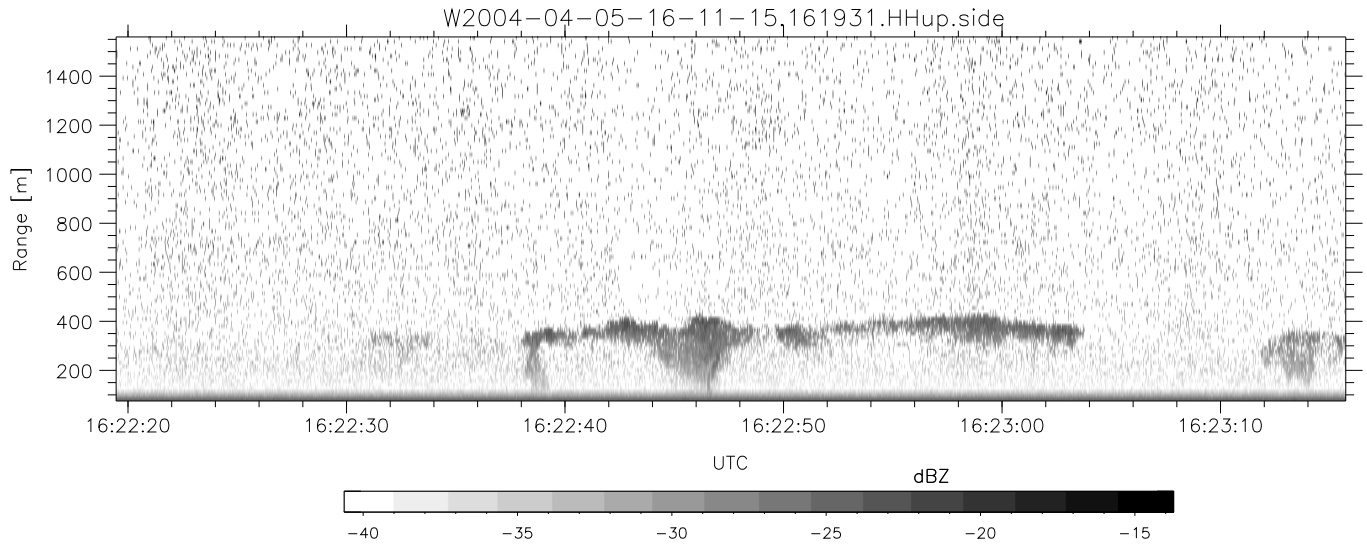


CIFEX 2004 Data (cal/250ns+2.5/100ns-3.5/500ns: 53.0,50.0)

W2004-04-05-16-11-15 - PPMAG4, IRIG:1/0/2
 UTC: 16:11:15.75 to 17:08:47.42, Dur: 3452s
 TimeLngth: 3451.71s, TimeInt: 28ms (35.4pps)
 TimeCor=-13.0s, PPS(min,max,med): 35,36,35
 Timeint/DSPdiff(mn,min,mx):28,28,39/28,28,39
 Prof: 335 to 122698, NumProf(r/t): 17571/122363
 ProcTime/Recs: 16:19:31-16:27:47/17571-35141
 ADacqtime: 25ms; DRate: 198.4KB/s; Flags: 0, 0, 0
 Pulse: 275ns, IFilt: 5.0MHz; ppPol: HH HV VV
 TxPol: HHV, PRF: 20 10 20 10 kHz, NoiseFlg:2,1
 Range: Delay 75m, Spacing 15m, Gates 100
 Ave. Pulses: 84, Rng/Prof Aspect@90m/s: 5.9

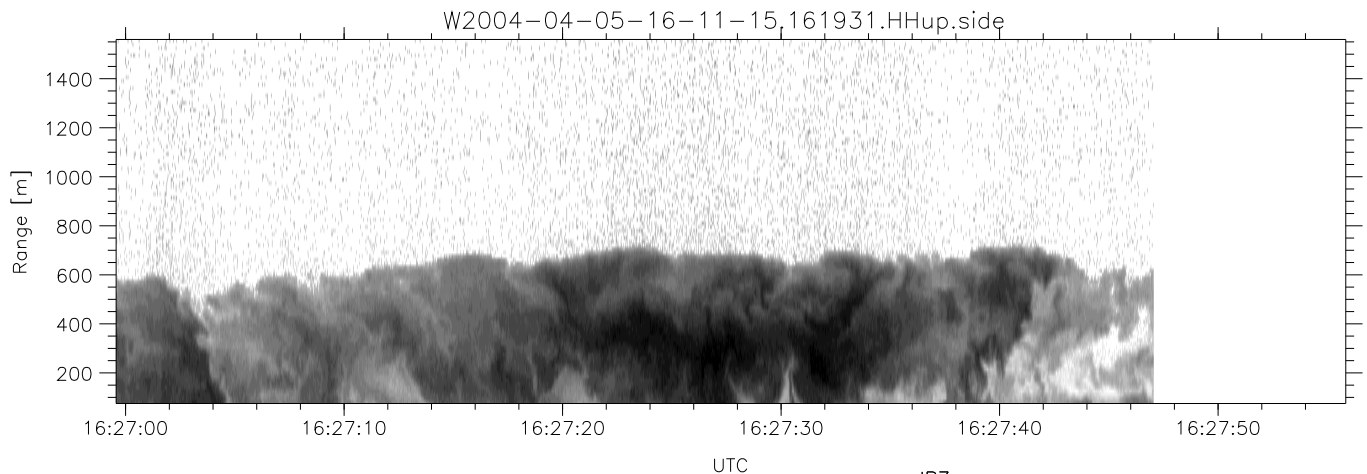
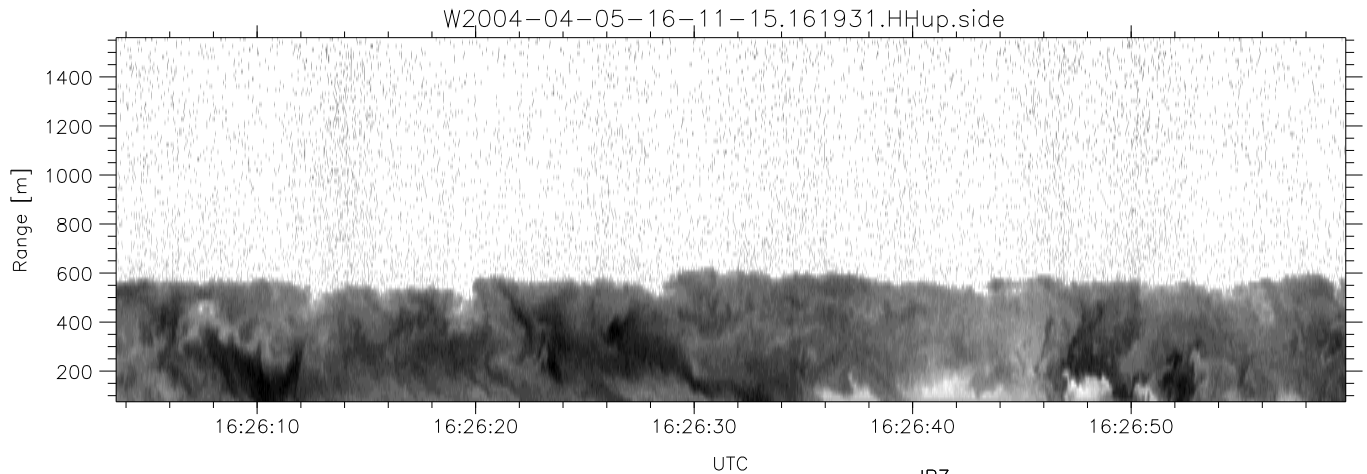
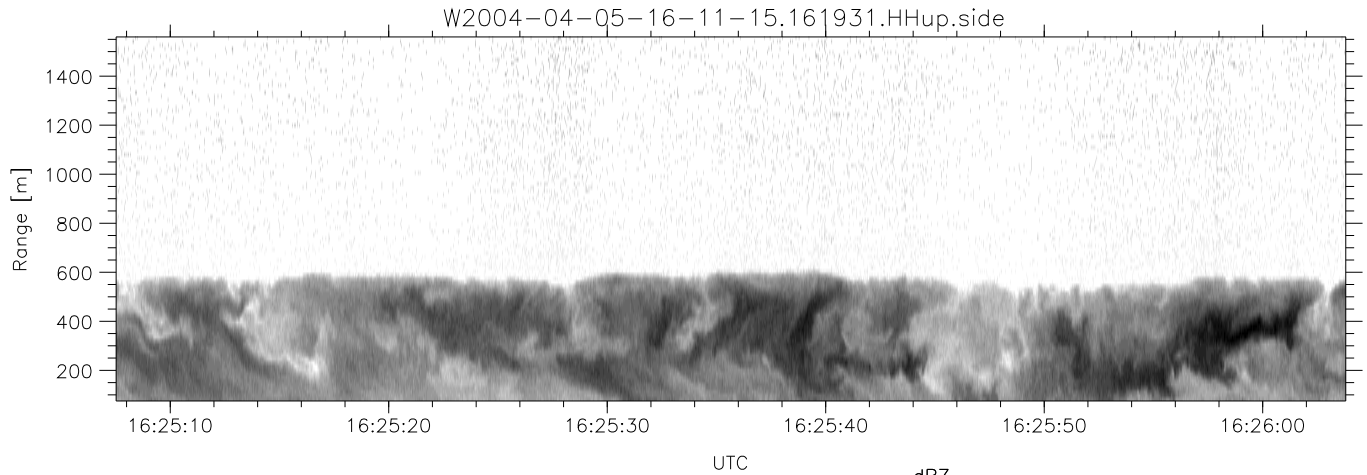
	Min	Max	Mean	Std	Varc%
hhN (dB)	-67.12	-63.73	-65.41	-75.47	9.9
vvN (dB)	-66.94	-63.67	-65.33	-75.36	9.9
hhL (dB)	-10.48	2.90	0.35	-6.31	21.6
vvL (dB)	-5.58	6.00	6.00	-10.45	2.3
ppN (m/s)	-12.24	12.58	-0.00	4.12	
ppT (m/s)	-96.66	99.38	-0.01	32.58	
hh/vv (dB)	NaN	65.68	18.61	40.90	1694
vh/hh (dB)	NaN	-27.12	-36.95	-35.92	126.
hv/vv (dB)	NaN	-33.98	-53.72	-45.06	733.
hnjmp (dB)			-0.17		
vnjmp (dB)			-0.17		



CIFEX 2004 Data (cal/250ns+2.5/100ns-3.5/500ns: 53.0,50.0)

W2004-04-05-16-11-15 - PPMAG4, IRIG:1/0/2
 UTC: 16:11:15.75 to 17:08:47.42, Dur: 3452s
 TimeLngth: 3451.71s, TimeInt: 28ms (35.4pps)
 TimeCor=-13.0s, PPS(min,max,med): 35,36,35
 Timeint/DSPdiff(mn,min,mx):28,28,39/28,28,39
 Prof: 335 to 122698, NumProf(r/t): 17571/122363
 ProcTime/Recs: 16:19:31-16:27:47/17571-35141
 ADacqtime: 25ms; DRate: 198.4KB/s; Flags: 0, 0, 0
 Pulse: 275ns, IFilt: 5.0MHz; ppPol: HH HV VV
 TxPol: HHVV, PRF: 20 10 20 10 kHz, NoiseFlg:2,1
 Range: Delay 75m, Spacing 15m, Gates 100
 Ave. Pulses: 84, Rng/Prof Aspect@90m/s: 5.9

	Min	Max	Mean	Std	Varc%
hhN (dB)	-67.12	-63.73	-65.41	-75.47	9.9
vvN (dB)	-66.94	-63.67	-65.33	-75.36	9.9
hhL (dB)	-10.48	2.90	0.35	-6.31	21.6
vvL (dB)	-5.58	6.00	6.00	-10.45	2.3
ppN (m/s)	-12.24	12.58	-0.00	4.12	
ppT (m/s)	-96.66	99.38	-0.01	32.58	
hh/vv (dB)	NaN	65.68	18.61	40.90	1694
vh/hh (dB)	NaN	-27.12	-36.95	-35.92	126.
hv/vv (dB)	NaN	-33.98	-53.72	-45.06	733.
hnjmp (dB)			-0.17		
vnjmp (dB)			-0.17		



CIFEX 2004 Data (cal/250ns+2.5/100ns-3.5/500ns: 53.0,50.0)

W2004-04-05-16-11-15 - PPMAG4, IRIG:1/0/2
 UTC: 16:11:15.75 to 17:08:47.42, Dur: 3452s
 TimeLngth: 3451.71s, TimeInt: 28ms (35.4pps)
 TimeCor=-13.0s, PPS(min,max,med): 35,36,35
 Timeint/DSPdiff(mn,min,mx):28,28,39/28,28,39
 Prof: 335 to 122698, NumProf(r/t): 17571/122363
 ProcTime/Recs: 16:19:31-16:27:47/17571-35141
 ADacqtime: 25ms; DRate: 198.4KB/s; Flags: 0, 0, 0
 Pulse: 275ns, IFfilt: 5.0MHz; ppPol: HH HV VV
 TxPol: HHVV, PRF: 20 10 20 10 kHz, Noiseflg:2,1
 Range: Delay 75m, Spacing 15m, Gates 100
 Ave. Pulses: 84, Rng/Prof Aspect@90m/s: 5.9

	Min	Max	Mean	Std	Varc%
hhN(dB)	-67.12	-63.73	-65.41	-75.47	9.9
vvN(dB)	-66.94	-63.67	-65.33	-75.36	9.9
hhL(dB)	-10.48	2.90	0.35	-6.31	21.6
vvL(dB)	-5.58	6.00	6.00	-10.45	2.3
ppN(m/s)	-12.24	12.58	-0.00	4.12	
ppT(m/s)	-96.66	99.38	-0.01	32.58	
hh/vv(dB)	NaN	65.68	18.61	40.90	1694
vh/hh(dB)	NaN	-27.12	-36.95	-35.92	126.
hv/vv(dB)	NaN	-33.98	-53.72	-45.06	733.
hnjmp(dB)			-0.17		
vnjmp(dB)			-0.17		