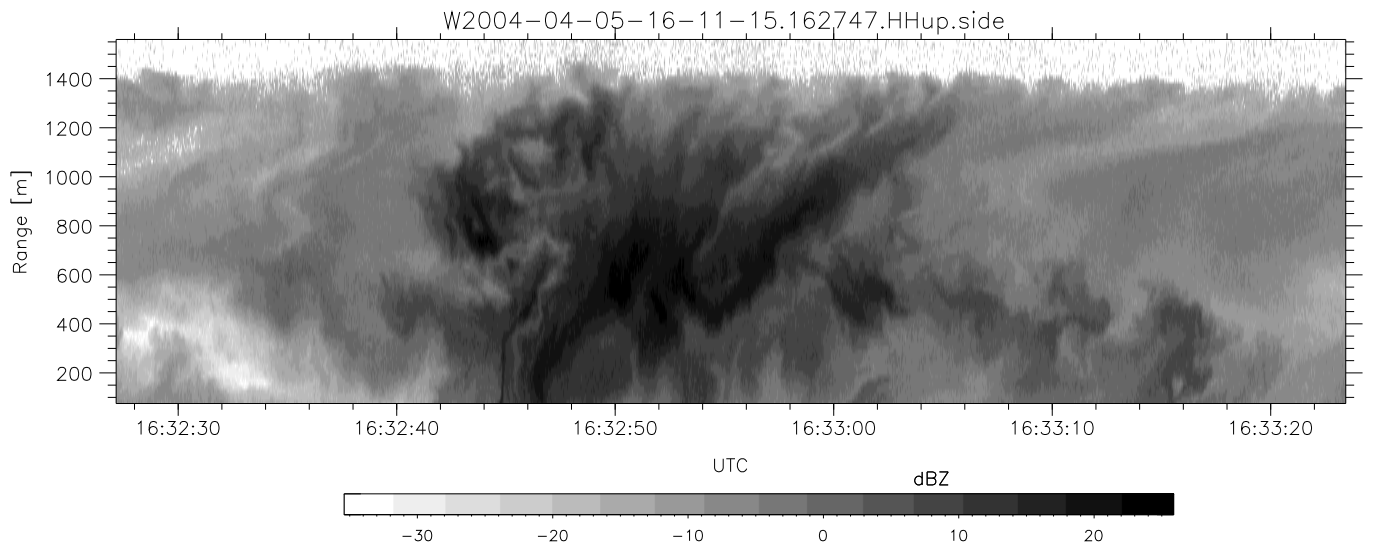
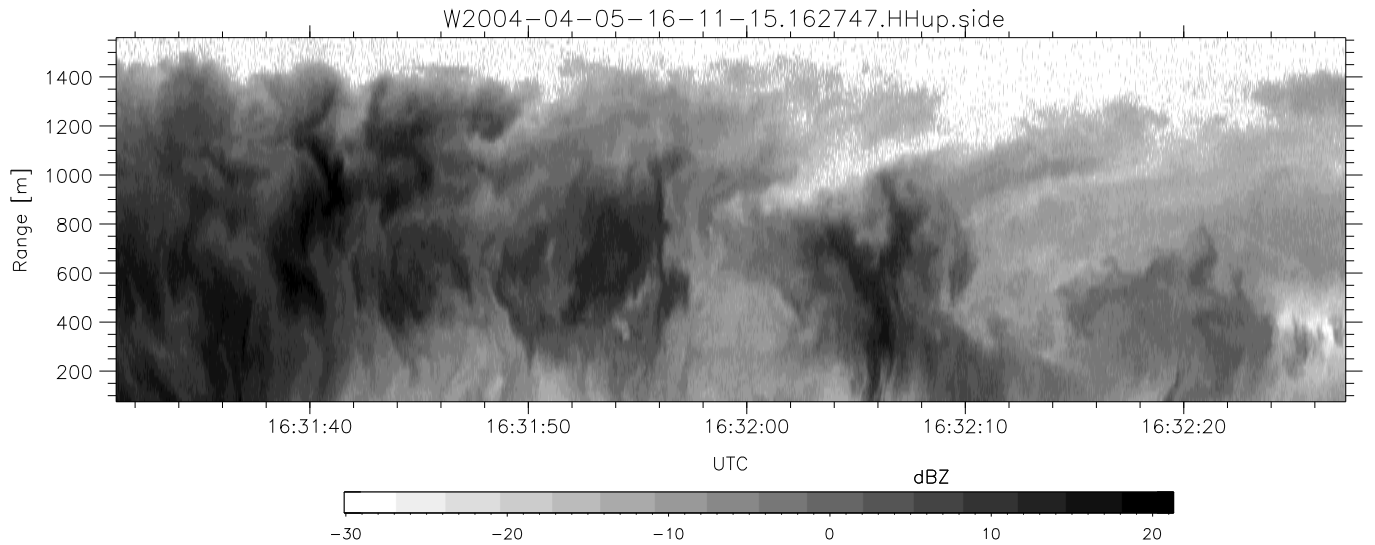
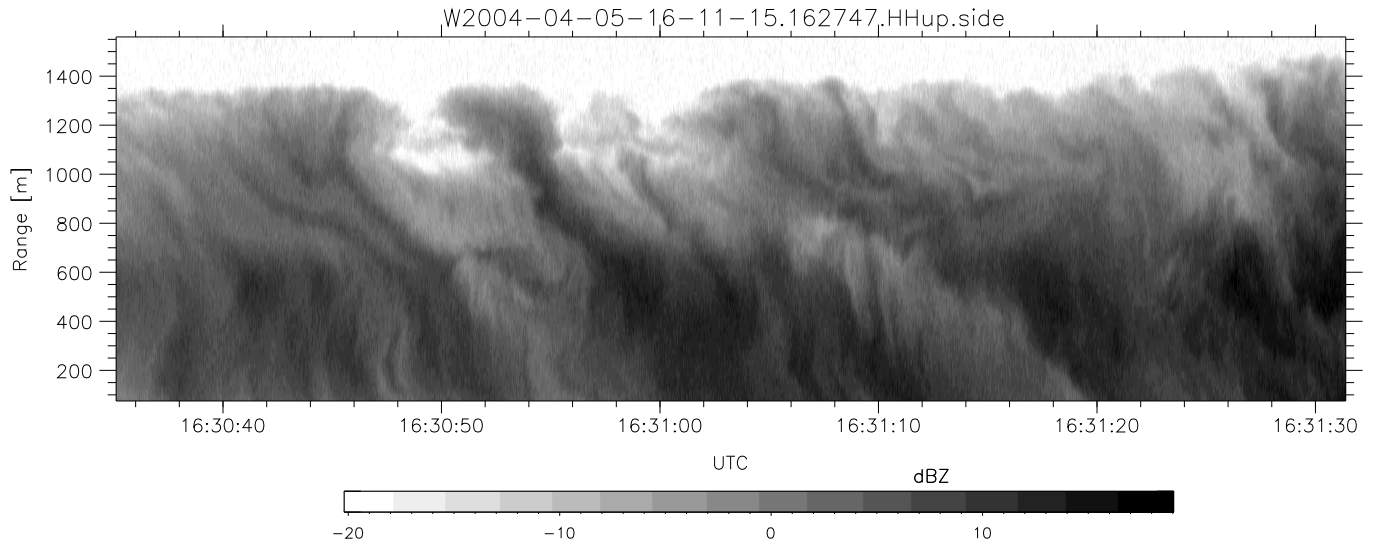


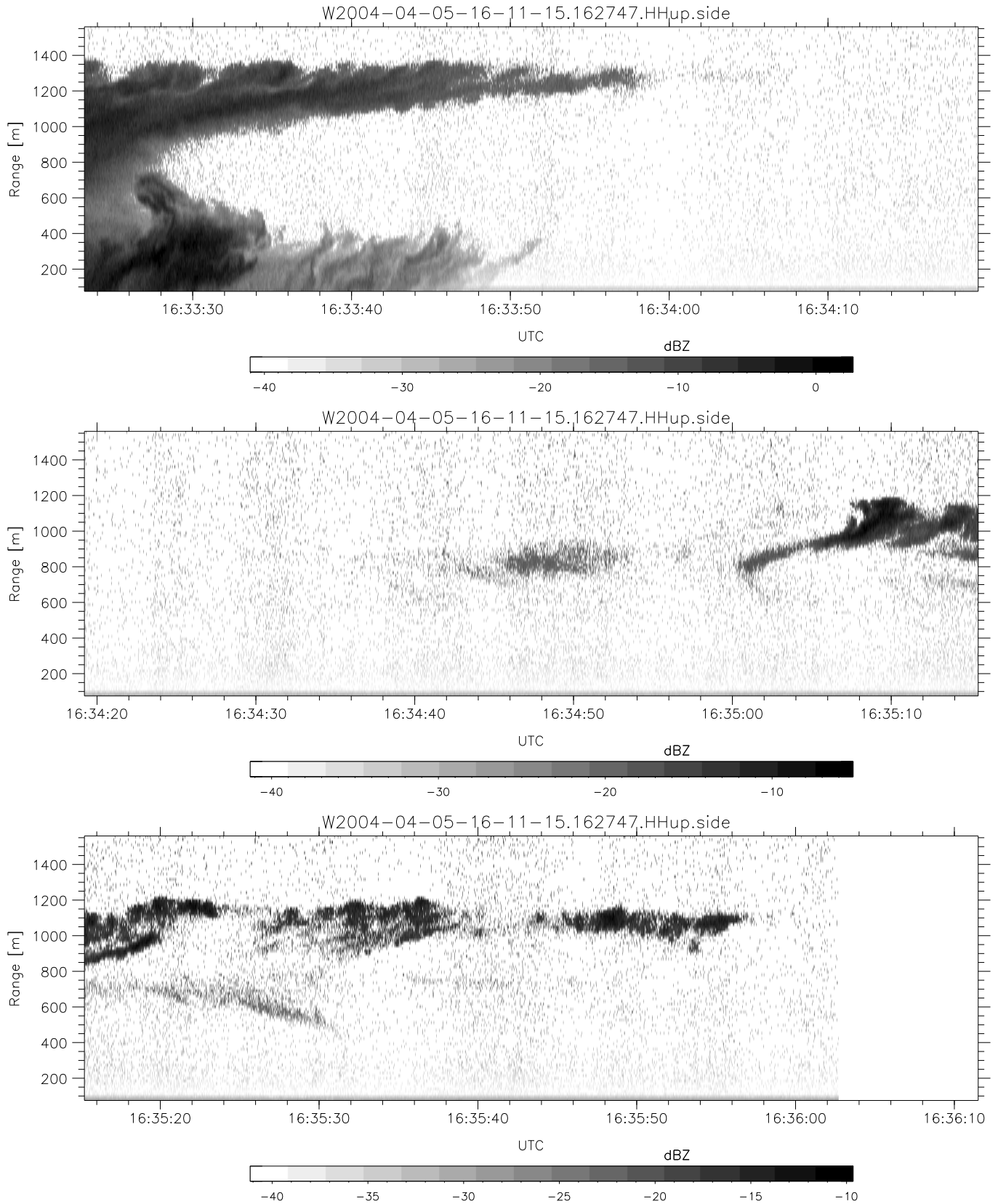
CIFEX 2004 Data (cal/250ns+2.5/100ns-3.5/500ns: 53.0,50.0)

W2004-04-05-16-11-15 - PPMAG4, IRIG:1/0/2	Min	Max	Mean	Std	Varc%
UTC: 16:11:15.75 to 17:08:47.42, Dur: 3452s	-67.19	-63.55	-65.44	-75.36	10.2
TimeLngth: 3451.71s, TimeInt: 28ms (35.4pps)	-67.20	-63.70	-65.42	-75.36	10.1
TimeCor=-13.0s, PPS(min,max,med): 35,36,35	-13.72	2.95	-2.35	-3.38	78.8
Timeint/DSPdiff(mn,min,mx):28,28,33/28,28,28	-3.31	6.00	4.34	-1.12	28.4
Prof: 335 to 122698, NumProf(r/t): 17571/122363	ppN(m/s)	-12.87	12.56	-0.09	4.16
ProcTime/Recs: 16:27:47-16:36:02/35142-52712	ppT(m/s)	-101.6	99.22	-0.70	32.88
ADacqtime: 25ms; DRate: 198.4KB/s; Flags: 0, 0, 0	hh/vv(dB)	NaN	76.24	27.21	48.33 1293
Pulse: 275ns, IFilt: 5.0MHz; ppPol: HH HV VV	vh/hh(dB)	NaN	5.39	-19.01	-10.60 693.
TxPol: HHVV, PRF: 20 10 20 10 kHz, NoiseFlg:4,2	hv/vv(dB)	NaN	-28.56	-47.08	-42.93 259.
Range: Delay 75m, Spacing 15m, Gates 100	hn_jmp(dB)			0.16	
Ave. Pulses: 84, Rng/Prof Aspect@90m/s: 5.9	vn_jmp(dB)			0.17	



CIFEX 2004 Data (cal/250ns+2.5/100ns-3.5/500ns: 53.0,50.0)

W2004-04-05-16-11-15 - PPMAG4, IRIG:1/0/2	Min	Max	Mean	Std	Varc%	
UTC: 16:11:15.75 to 17:08:47.42, Dur: 3452s	hhN (dB)	-67.19	-63.55	-65.44	-75.36	10.2
TimeLngth: 3451.71s, TimeInt: 28ms (35.4pps)	vvN (dB)	-67.20	-63.70	-65.42	-75.36	10.1
TimeCor=-13.0s, PPS(min,max,med): 35,36,35	hhL (dB)	-13.72	2.95	-2.35	-3.38	78.8
Timeint/DSPdiff(mn,min,mx):28,28,33/28,28,28	vvL (dB)	-3.31	6.00	4.34	-1.12	28.4
Prof: 335 to 122698, NumProf(r/t): 17571/122363	ppN (m/s)	-12.87	12.56	-0.09	4.16	
ProcTime/Recs: 16:27:47-16:36:02/35142-52712	ppT (m/s)	-101.6	99.22	-0.70	32.88	
ADAcqtime: 25ms; DRate: 198.4KB/s; Flags: 0, 0, 0	hh/vv (dB)	NaN	76.24	27.21	48.33	1293
Pulse: 275ns, IFfilt: 5.0MHz; ppPol: HH HV VV	vh/hh (dB)	NaN	5.39	-19.01	-10.60	693.
TxPol: HHVV, PRF: 20 10 20 10 kHz, NoiseFlg:4,2	hv/vv (dB)	NaN	-28.56	-47.08	-42.93	259.
Range: Delay 75m, Spacing 15m, Gates 100	hn_jmp (dB)			0.16		
Ave. Pulses: 84, Rng/Prof Aspect@90m/s: 5.9	vn_jmp (dB)			0.17		



CIFEX 2004 Data (cal/250ns+2.5/100ns-3.5/500ns: 53.0,50.0)

W2004-04-05-16-11-15 - PPMAG4, IRIG:1/0/2  
 UTC: 16:11:15.75 to 17:08:47.42, Dur: 3452s  
 TimeLngth: 3451.71s, TimeInt: 28ms (35.4pps)  
 TimeCor=-13.0s, PPS(min,max,med): 35,36,35  
 Timeint/DSPdiff(mn,min,mx):28,28,33/28,28,28  
 Prof: 335 to 122698, NumProf(r/t): 17571/122363  
 ProcTime/Recs: 16:27:47-16:36:02/35142-52712  
 ADacqtime: 25ms; DRate: 198.4KB/s; Flags: 0, 0, 0  
 Pulse: 275ns, IFfilt: 5.0MHz; ppPol: HH HV VV  
 TxPol: HHVV, PRF: 20 10 20 10 kHz, Noiseflg:4,2  
 Range: Delay 75m, Spacing 15m, Gates 100  
 Ave. Pulses: 84, Rng/Prof Aspect@90m/s: 5.9

	Min	Max	Mean	Std	Varc%
hhN (dB)	-67.19	-63.55	-65.44	-75.36	10.2
vvN (dB)	-67.20	-63.70	-65.42	-75.36	10.1
hhL (dB)	-13.72	2.95	-2.35	-3.38	78.8
vvL (dB)	-3.31	6.00	4.34	-1.12	28.4
ppN (m/s)	-12.87	12.56	-0.09	4.16	
ppT (m/s)	-101.6	99.22	-0.70	32.88	
hh/vv (dB)	NaN	76.24	27.21	48.33	1293
vh/hh (dB)	NaN	5.39	-19.01	-10.60	693.
hv/vv (dB)	NaN	-28.56	-47.08	-42.93	259.
hh_jmp (dB)			0.16		
vv_jmp (dB)			0.17		