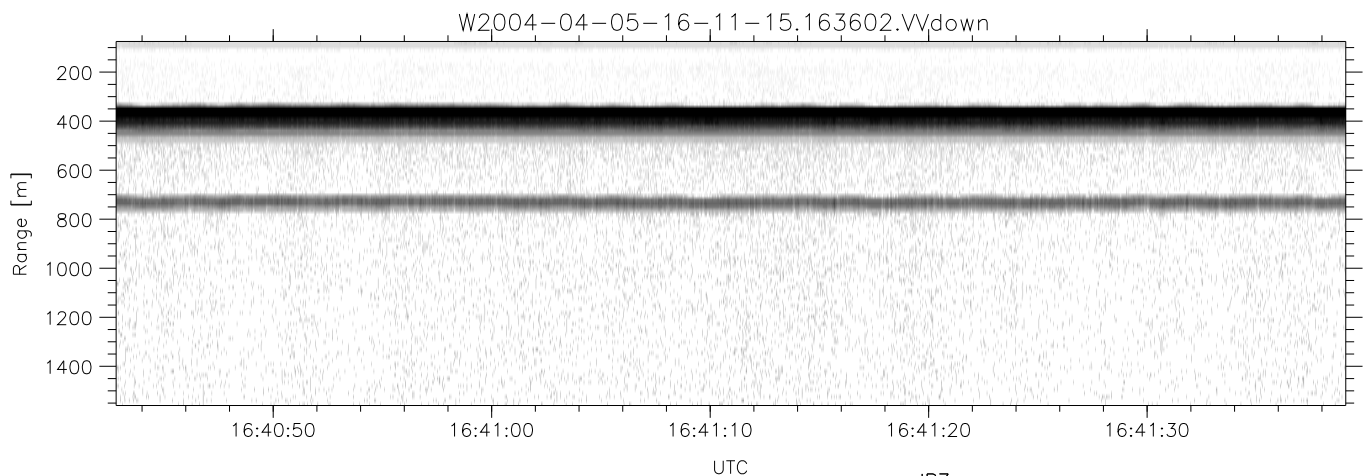
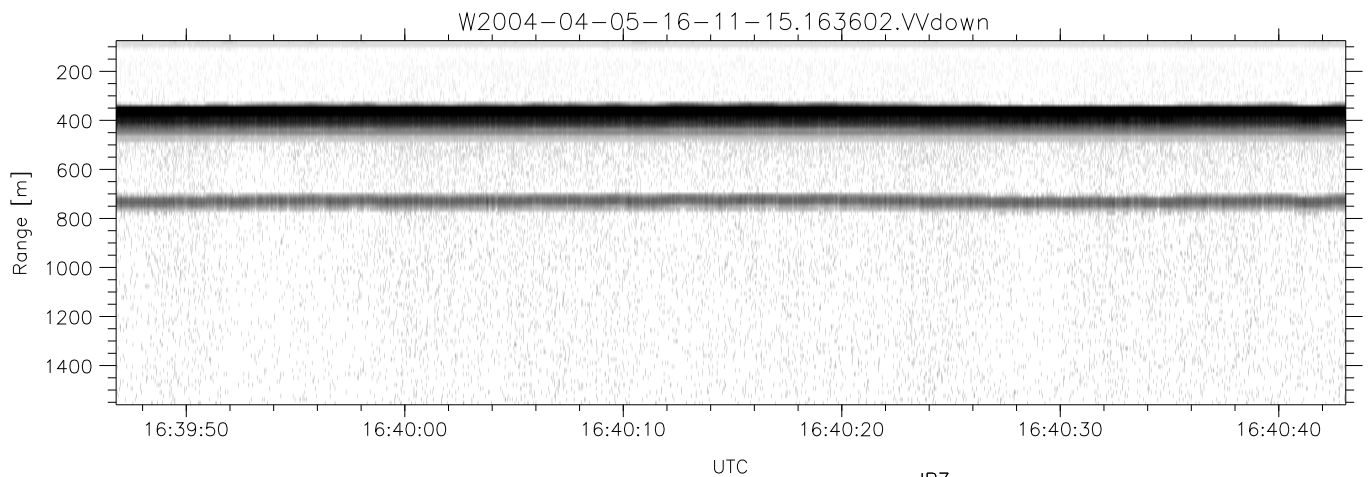
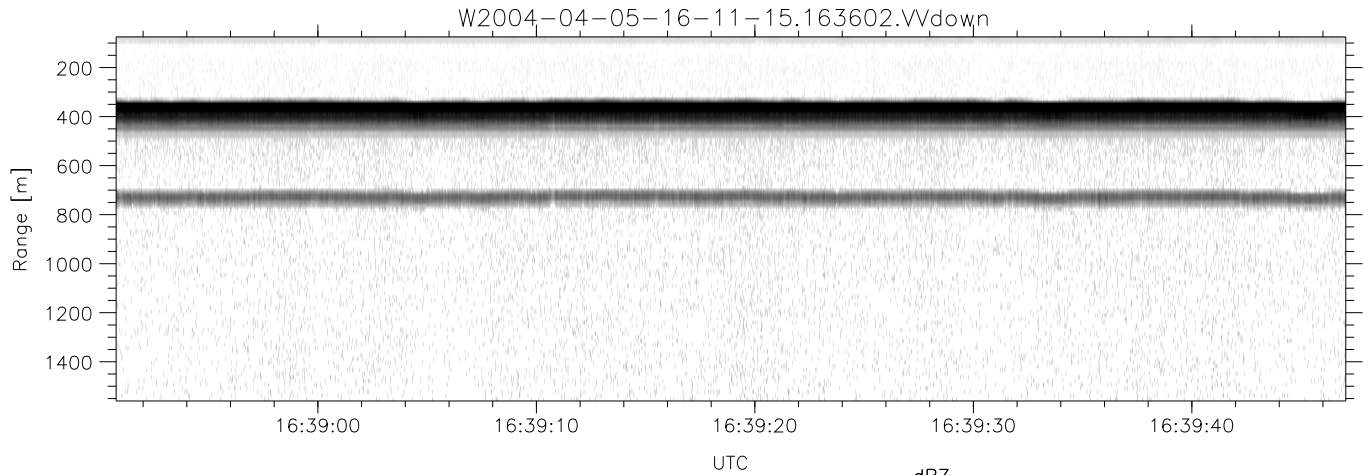


CIFEX 2004 Data (cal/250ns+2.5/100ns-3.5/500ns: 53.0,50.0)

W2004-04-05-16-11-15 - PPMAG4, IRIG:1/0/2
 UTC: 16:11:15.75 to 17:08:47.42, Dur: 3452s
 TimeLngth: 3451.71s, TimeInt: 28ms (35.4pps)
 TimeCor=-13.0s, PPS(min,max,med): 35,36,35
 Timeint/DSPdiff(mn,min,mx):28,28,37/28,28,37
 Prof: 335 to 122698, NumProf(r/t): 17571/122363
 ProcTime/Recs: 16:36:02-16:44:18/52713-70283
 ADacqtime: 25ms; DRate: 198.4KB/s; Flags: 0, 0, 0
 Pulse: 275ns, IFilt: 5.0MHz; ppPol: HH HV VV
 TxPol: HHVV, PRF: 20 10 20 10 kHz, NoiseFlg:4,2
 Range: Delay 75m, Spacing 15m, Gates 100
 Ave. Pulses: 84, Rng/Prof Aspect@90m/s: 5.9

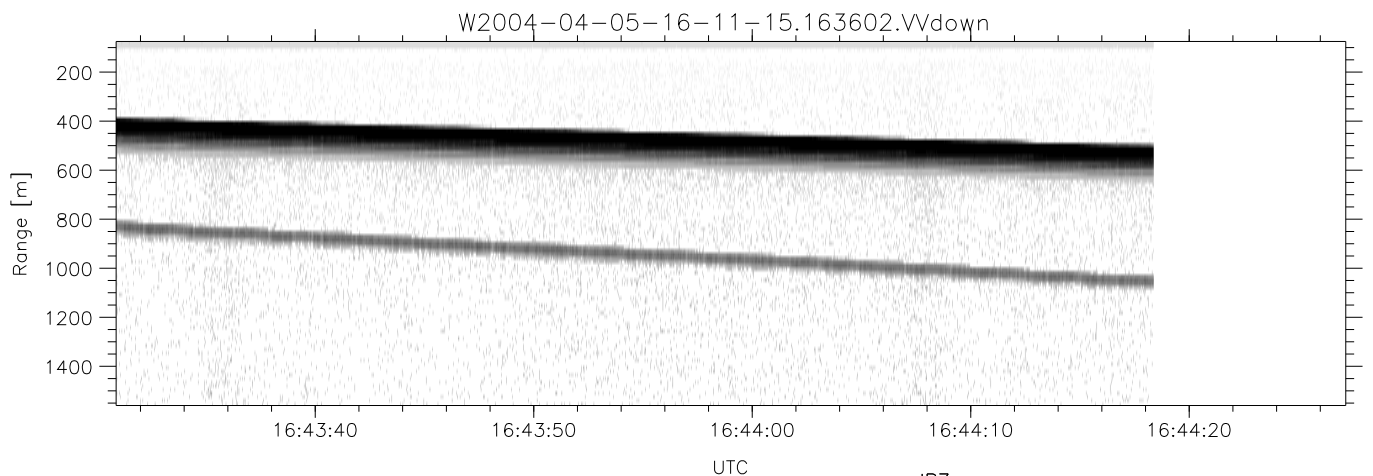
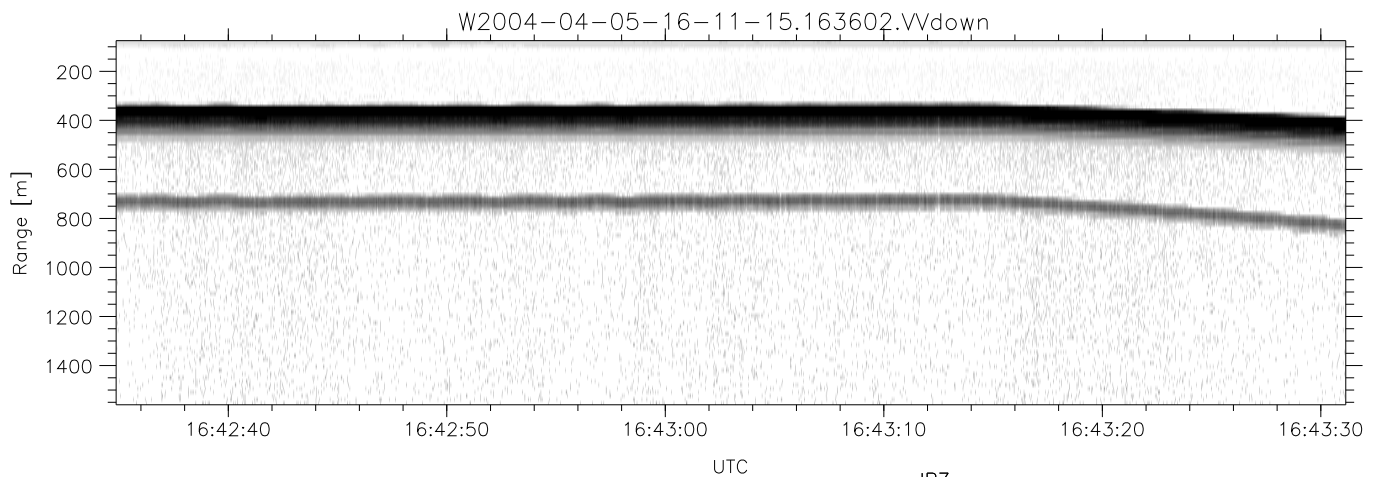
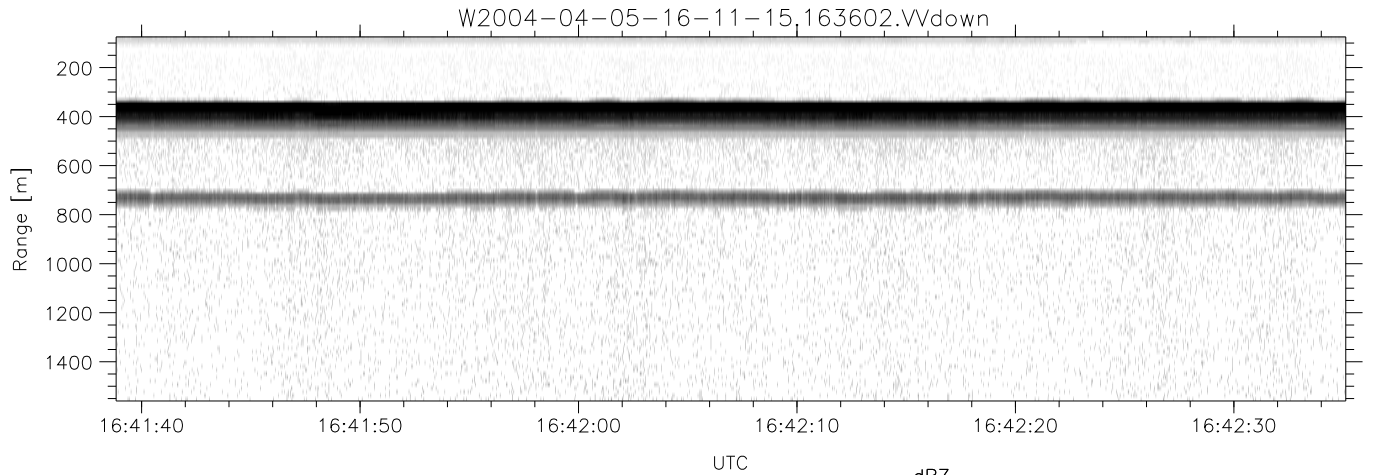
	Min	Max	Mean	Std	Varc%
hhN(dB)	-67.32	-63.96	-65.62	-75.66	9.9
vvN(dB)	-67.46	-63.96	-65.59	-75.59	10.0
hhL(dB)	-16.53	-1.71	-6.67	-14.15	17.8
vvL(dB)	-4.96	6.00	3.73	-1.47	30.2
ppN(m/s)	-12.05	12.24	-0.00	4.13	
ppT(m/s)	-95.19	96.72	-0.00	32.64	
hh/vv(dB)	NaN	65.50	16.74	44.43	5883
vh/hh(dB)	NaN	-30.42	-38.08	-34.80	213.
hv/vv(dB)	NaN	-35.48	-57.67	-48.15	896.
hnjmp(dB)			-0.18		
vnjmp(dB)			-0.17		



CIFEX 2004 Data (cal/250ns+2.5/100ns-3.5/500ns: 53.0,50.0)

W2004-04-05-16-11-15 - PPMAG4, IRIG:1/0/2
 UTC: 16:11:15.75 to 17:08:47.42, Dur: 3452s
 TimeLngth: 3451.71s, TimeInt: 28ms (35.4pps)
 TimeCor=-13.0s, PPS(min,max,med): 35,36,35
 Timeint/DSPdiff(mn,min,mx):28,28,37/28,28,37
 Prof: 335 to 122698, NumProf(r/t): 17571/122363
 ProcTime/Recs: 16:36:02-16:44:18/52713-70283
 ADacqtime: 25ms; DRate: 198.4KB/s; Flags: 0, 0, 0
 Pulse: 275ns, IFilt: 5.0MHz; ppPol: HH HV VV
 TxPol: HHVV, PRF: 20 10 20 10 kHz, NoiseFlg:4,2
 Range: Delay 75m, Spacing 15m, Gates 100
 Ave. Pulses: 84, Rng/Prof Aspect@90m/s: 5.9

	Min	Max	Mean	Std	Varc%
hhN (dB)	-67.32	-63.96	-65.62	-75.66	9.9
vvN (dB)	-67.46	-63.96	-65.59	-75.59	10.0
hhL (dB)	-16.53	-1.71	-6.67	-14.15	17.8
vvL (dB)	-4.96	6.00	3.73	-1.47	30.2
ppN (m/s)	-12.05	12.24	-0.00	4.13	
ppT (m/s)	-95.19	96.72	-0.00	32.64	
hh/vv (dB)	NaN	65.50	16.74	44.43	5883
vh/hh (dB)	NaN	-30.42	-38.08	-34.80	213.
hv/vv (dB)	NaN	-35.48	-57.67	-48.15	896.
hn_jmp (dB)			-0.18		
vn_jmp (dB)			-0.17		



CIFEX 2004 Data (cal/250ns+2.5/100ns-3.5/500ns: 53.0,50.0)

W2004-04-05-16-11-15 - PPMAG4, IRIG:1/0/2
 UTC: 16:11:15.75 to 17:08:47.42, Dur: 3452s
 TimeLngth: 3451.71s, TimeInt: 28ms (35.4pps)
 TimeCor=-13.0s, PPS(min,max,med): 35,36,35
 Timeint/DSPdiff(mn,min,mx):28,28,37/28,28,37
 Prof: 335 to 122698, NumProf(r/t): 17571/122363
 ProcTime/Recs: 16:36:02-16:44:18/52713-70283
 ADacqtime: 25ms; DRate: 198.4KB/s; Flags: 0, 0, 0
 Pulse: 275ns, IFilt: 5.0MHz; ppPol: HH HV VV
 TxPol: HHVV, PRF: 20 10 20 10 kHz, NoiseFlg:4,2
 Range: Delay 75m, Spacing 15m, Gates 100
 Ave. Pulses: 84, Rng/Prof Aspect@90m/s: 5.9

	Min	Max	Mean	Std	Varc%
hhN (dB)	-67.32	-63.96	-65.62	-75.66	9.9
vvN (dB)	-67.46	-63.96	-65.59	-75.59	10.0
hhL (dB)	-16.53	-1.71	-6.67	-14.15	17.8
vvL (dB)	-4.96	6.00	3.73	-1.47	30.2
ppN (m/s)	-12.05	12.24	-0.00	4.13	
ppT (m/s)	-95.19	96.72	-0.00	32.64	
hh/vv (dB)	NaN	65.50	16.74	44.43	5883
vh/hh (dB)	NaN	-30.42	-38.08	-34.80	213.
hv/vv (dB)	NaN	-35.48	-57.67	-48.15	896.
hn_jmp (dB)			-0.18		
vn_jmp (dB)			-0.17		