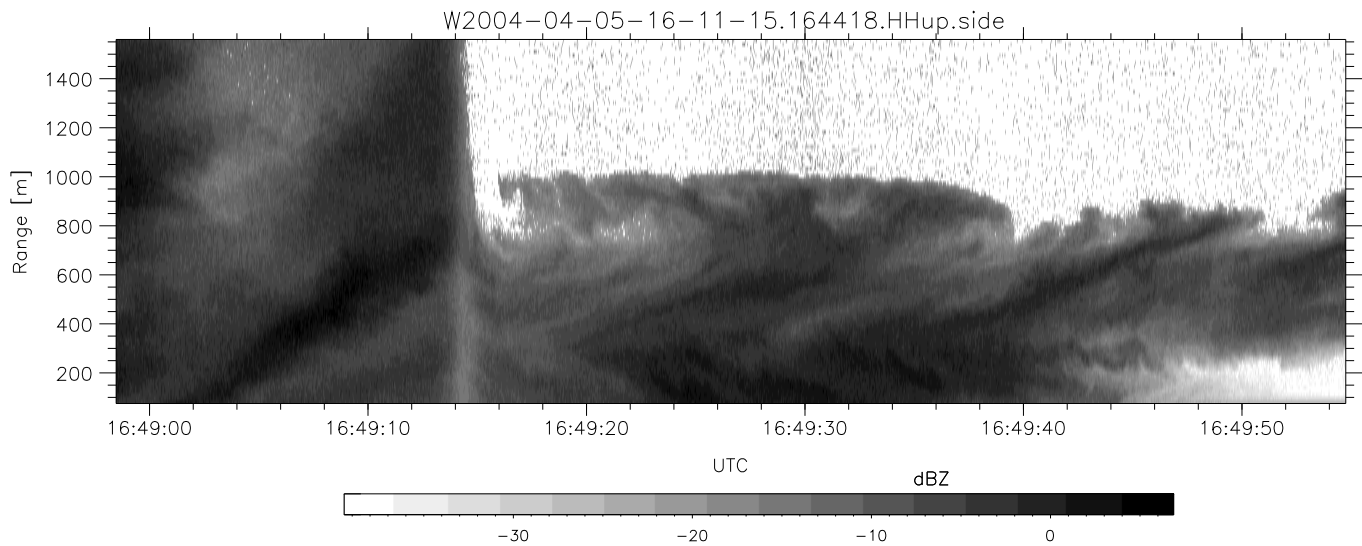
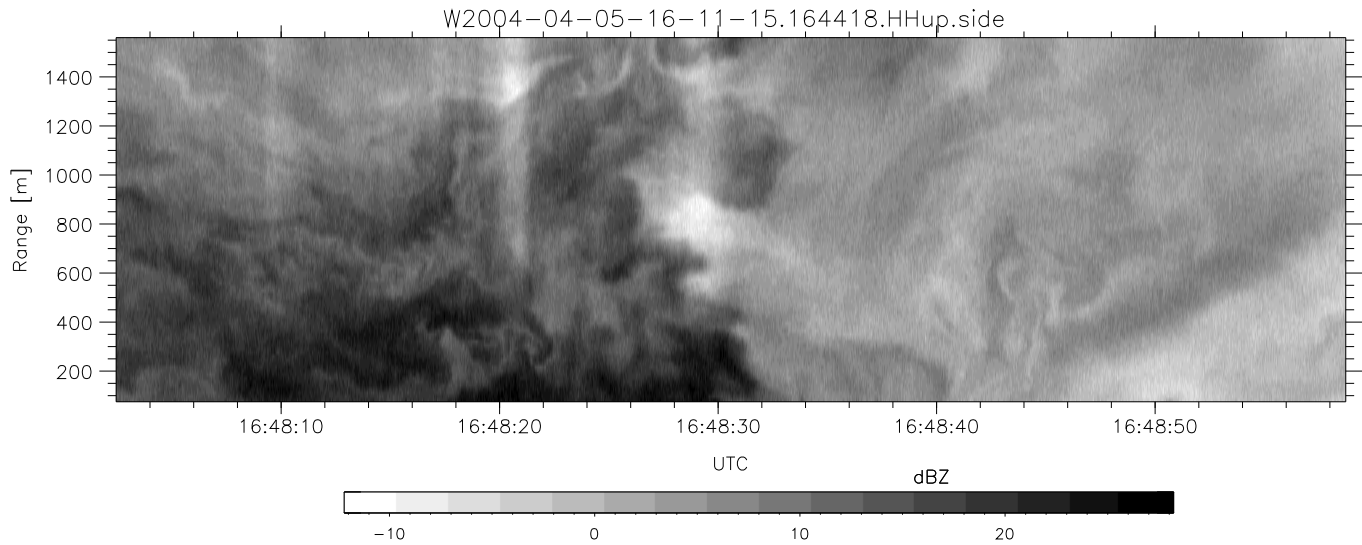
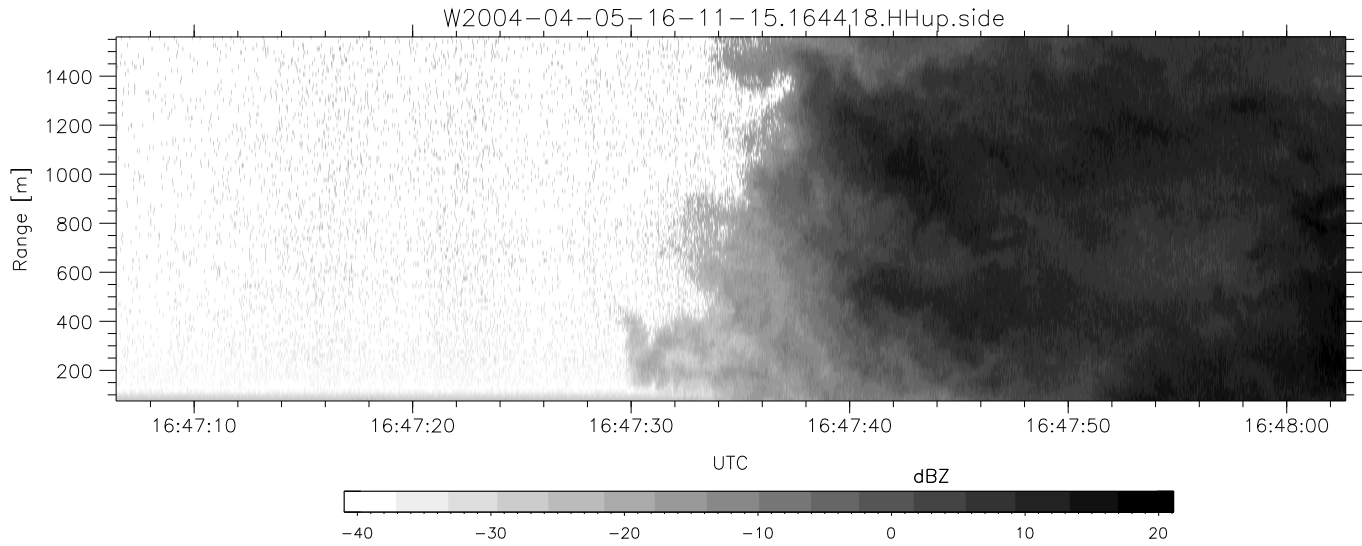


CIFEX 2004 Data (cal/250ns+2.5/100ns-3.5/500ns: 53.0,50.0)

W2004-04-05-16-11-15 - PPMAG4, IRIG:1/0/2  
 UTC: 16:11:15.75 to 17:08:47.42, Dur: 3452s  
 TimeLngth: 3451.71s, TimeInt: 28ms (35.4pps)  
 TimeCor=-13.0s, PPS(min,max,med): 35,36,35  
 Timeint/DSPdiff(mn,min,mx):28,28,28/28,28,28  
 Prof: 335 to 122698, NumProf(r/t): 17571/122363  
 ProcTime/Recs: 16:44:18-16:52:34/70284-87854  
 ADacqtime: 25ms; DRate: 198.4KB/s; Flags: 0, 0, 0  
 Pulse: 275ns, IFilt: 5.0MHz; ppPol: HH HV VV  
 TxPol: HHVV, PRF: 20 10 20 10 kHz, NoiseFlg:4,2  
 Range: Delay 75m, Spacing 15m, Gates 100  
 Ave. Pulses: 84, Rng/Prof Aspect@90m/s: 5.9

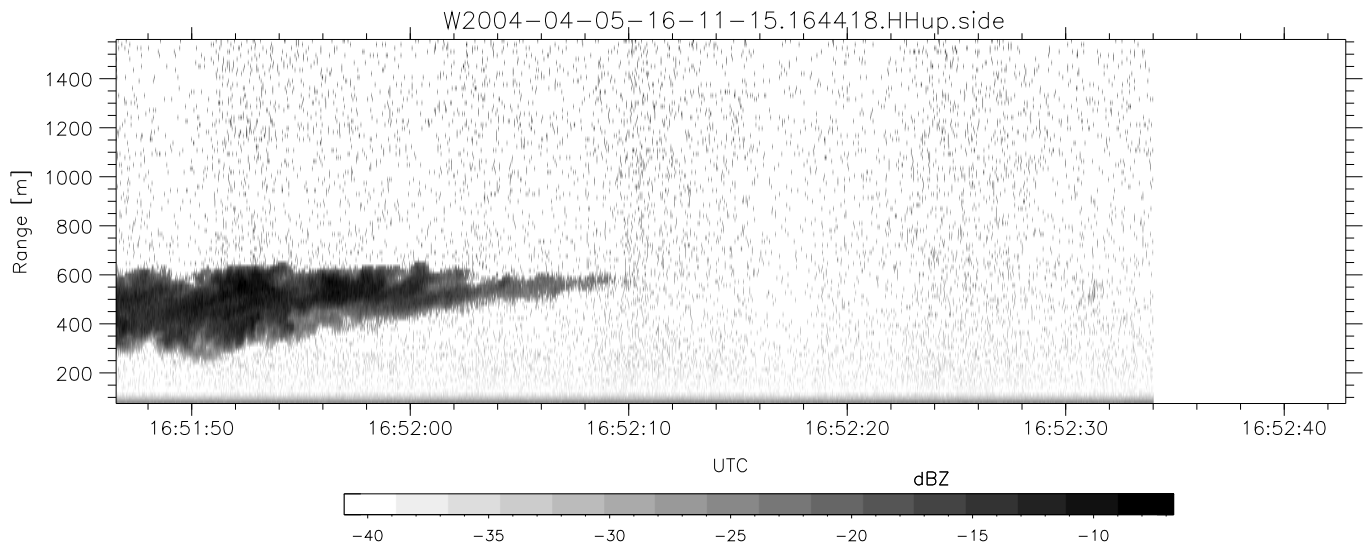
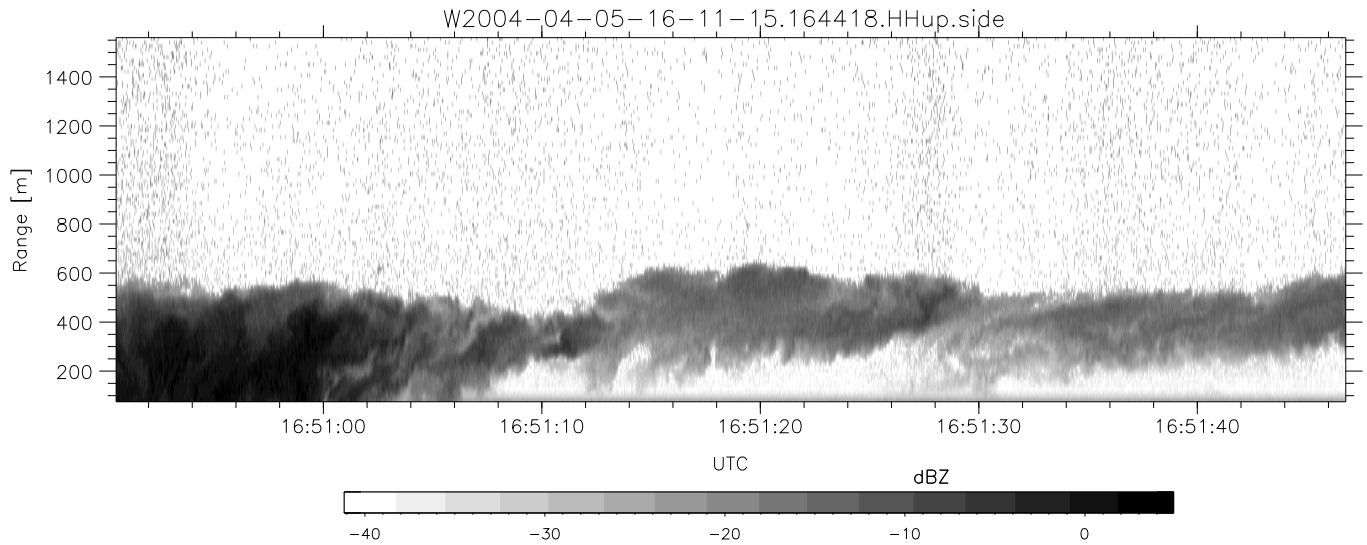
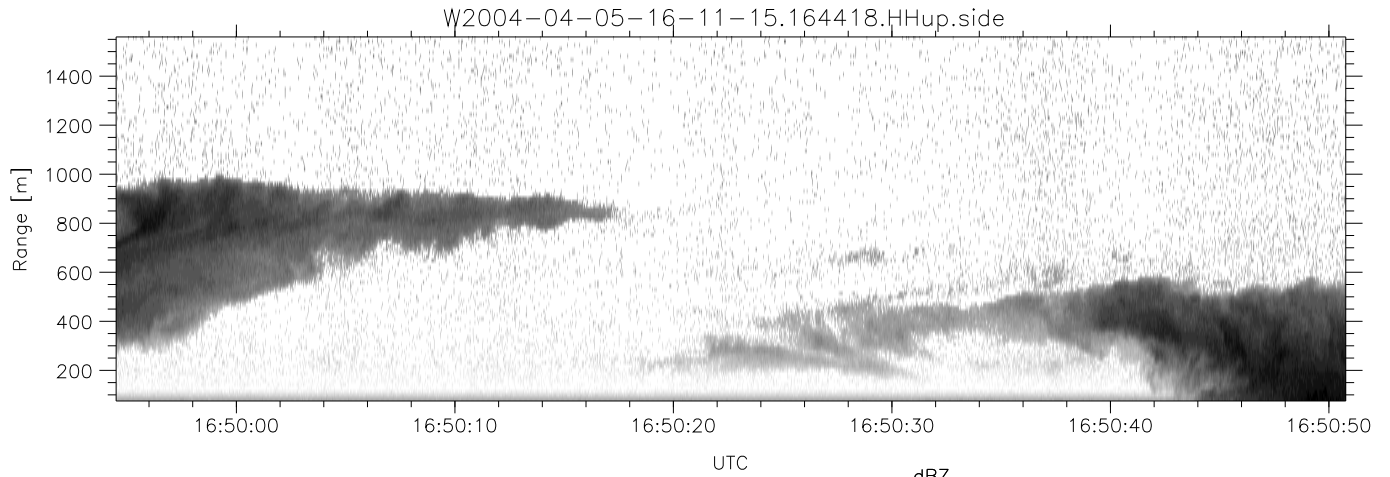
	Min	Max	Mean	Std	Varc%
hhN(dB)	-67.58	-63.83	-65.57	-75.46	10.3
vvN(dB)	-67.61	-63.72	-65.64	-75.65	10.0
hhL(dB)	-6.95	0.12	-1.49	-8.03	22.2
vvL(dB)	-0.67	5.75	1.75	-3.23	31.7
ppN(m/s)	-12.55	12.31	-0.00	4.18	
ppT(m/s)	-99.18	97.22	-0.01	32.98	
hh/vv(dB)	NaN	69.50	NaN	49.81	-105
vh/hh(dB)	NaN	-1.44	-28.05	-18.33	937.
hv/vv(dB)	NaN	-25.44	-47.08	-42.91	261.
hnjmp(dB)				0.17	
vnjmp(dB)				0.17	



CIFEX 2004 Data (cal/250ns+2.5/100ns-3.5/500ns: 53.0,50.0)

W2004-04-05-16-11-15 - PPMAG4, IRIG:1/0/2  
 UTC: 16:11:15.75 to 17:08:47.42, Dur: 3452s  
 TimeLngth: 3451.71s, TimeInt: 28ms (35.4pps)  
 TimeCor=-13.0s, PPS(min,max,med): 35,36,35  
 Timeint/DSPdiff(mn,min,mx):28,28,28/28,28,28  
 Prof: 335 to 122698, NumProf(r/t): 17571/122363  
 ProcTime/Recs: 16:44:18-16:52:34/70284-87854  
 ADacqtime: 25ms; DRate: 198.4KB/s; Flags: 0, 0, 0  
 Pulse: 275ns, IFilt: 5.0MHz; ppPol: HH HV VV  
 TxPol: HHVV, PRF: 20 10 20 10 kHz, NoiseFlg:4,2  
 Range: Delay 75m, Spacing 15m, Gates 100  
 Ave. Pulses: 84, Rng/Prof Aspect@90m/s: 5.9

	Min	Max	Mean	Std	Varc%
hhN (dB)	-67.58	-63.83	-65.57	-75.46	10.3
vvN (dB)	-67.61	-63.72	-65.64	-75.65	10.0
hhL (dB)	-6.95	0.12	-1.49	-8.03	22.2
vvL (dB)	-0.67	5.75	1.75	-3.23	31.7
ppN (m/s)	-12.55	12.31	-0.00	4.18	
ppT (m/s)	-99.18	97.22	-0.01	32.98	
hh/vv (dB)	NaN	69.50	NaN	49.81	-105
vh/hh (dB)	NaN	-1.44	-28.05	-18.33	937.
hv/vv (dB)	NaN	-25.44	-47.08	-42.91	261.
hn_jmp (dB)				0.17	
vn_jmp (dB)				0.17	



CIFEX 2004 Data (cal/250ns+2.5/100ns-3.5/500ns: 53.0,50.0)

W2004-04-05-16-11-15 - PPMAG4, IRIG:1/0/2  
 UTC: 16:11:15.75 to 17:08:47.42, Dur: 3452s  
 TimeLngth: 3451.71s, TimeInt: 28ms (35.4pps)  
 TimeCor=-13.0s, PPS(min,max,med): 35,36,35  
 Timeint/DSPdiff(mn,min,mx):28,28,28/28,28,28  
 Prof: 335 to 122698, NumProf(r/t): 17571/122363  
 ProcTime/Recs: 16:44:18-16:52:34/70284-87854  
 ADacqtime: 25ms; DRate: 198.4KB/s; Flags: 0, 0, 0  
 Pulse: 275ns, IFfilt: 5.0MHz; ppPol: HH HV VV  
 TxPol: HHVV, PRF: 20 10 20 10 kHz, Noiseflg:4,2  
 Range: Delay 75m, Spacing 15m, Gates 100  
 Ave. Pulses: 84, Rng/Prof Aspect@90m/s: 5.9

	Min	Max	Mean	Std	Varc%
hhN(dB)	-67.58	-63.83	-65.57	-75.46	10.3
vvN(dB)	-67.61	-63.72	-65.64	-75.65	10.0
hhL(dB)	-6.95	0.12	-1.49	-8.03	22.2
vvL(dB)	-0.67	5.75	1.75	-3.23	31.7
ppN(m/s)	-12.55	12.31	-0.00	4.18	
ppT(m/s)	-99.18	97.22	-0.01	32.98	
hh/vv(dB)	NaN	69.50	NaN	49.81	-105
vh/hh(dB)	NaN	-1.44	-28.05	-18.33	937.
hv/vv(dB)	NaN	-25.44	-47.08	-42.91	261.
hnjmp(dB)				0.17	
vnjmp(dB)				0.17	