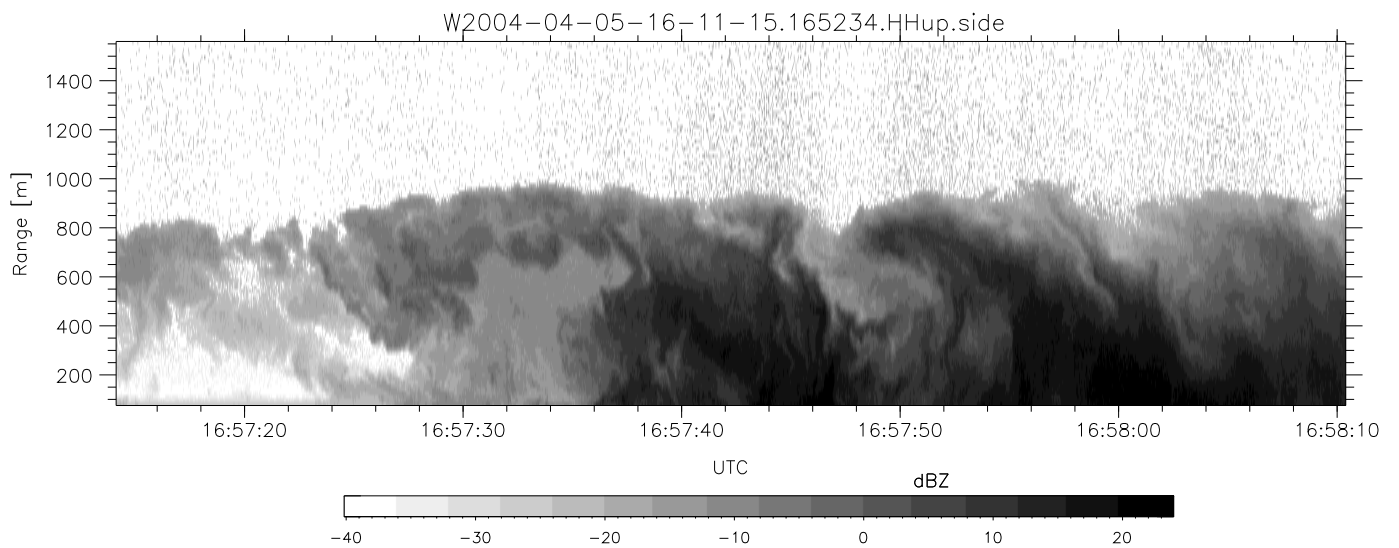
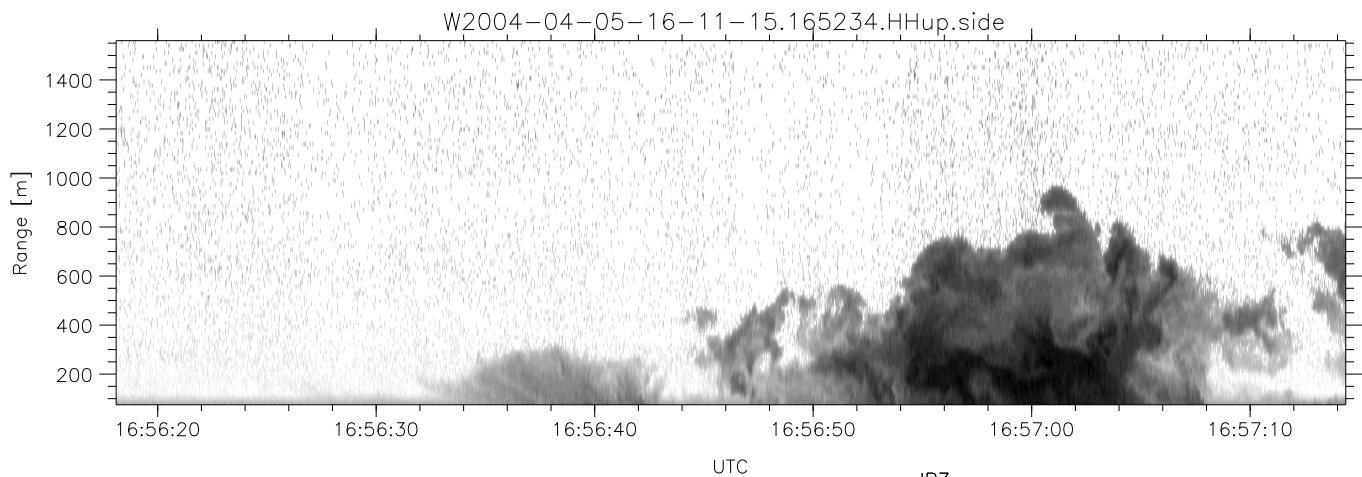
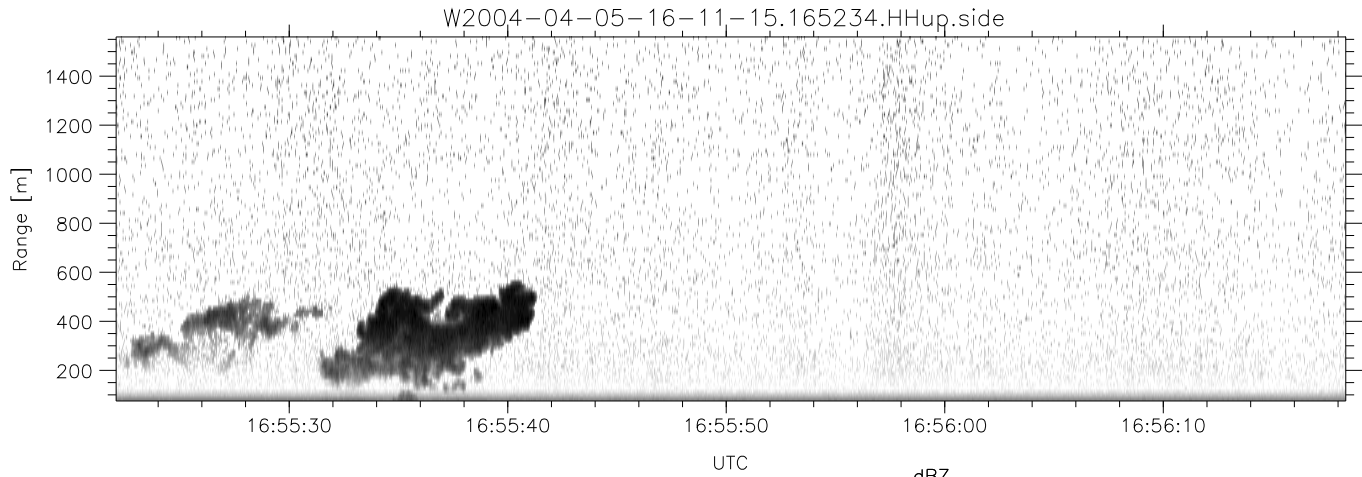


CIFEX 2004 Data (cal/250ns+2.5/100ns-3.5/500ns: 53.0,50.0)

W2004-04-05-16-11-15 - PPMAG4, IRIG:1/0/2
 UTC: 16:11:15.75 to 17:08:47.42, Dur: 3452s
 TimeLngth: 3451.71s, TimeInt: 28ms (35.4pps)
 TimeCor=-13.0s, PPS(min,max,med): 35,36,35
 Timeint/DSPdiff(mn,min,mx):28,28,28/28,28,28
 Prof: 335 to 122698, NumProf(r/t): 17571/122363
 ProcTime/Recs: 16:52:34-17:00:49/87855-105425
 ADacqtime: 25ms; DRate: 198.4KB/s; Flags: 0, 0, 0
 Pulse: 275ns, IFfilt: 5.0MHz; ppPol: HH HV VV
 TxPol: HHVV, PRF: 20 10 20 10 kHz, Noiseflg:4,2
 Range: Delay 75m, Spacing 15m, Gates 100
 Ave. Pulses: 84, Rng/Prof Aspect@90m/s: 5.9

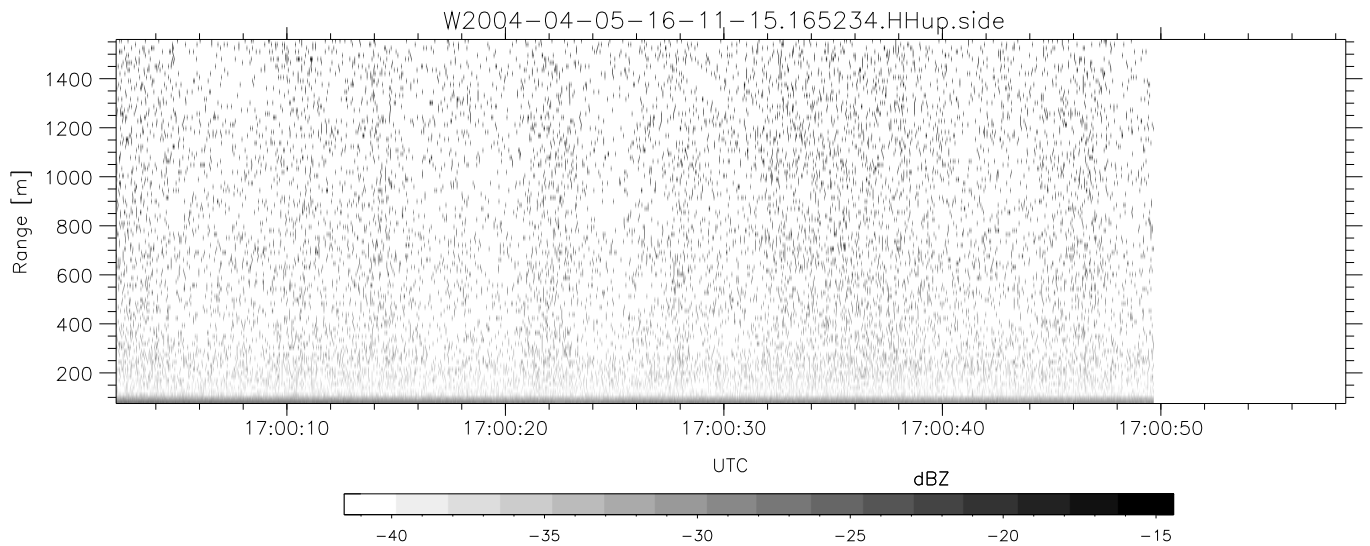
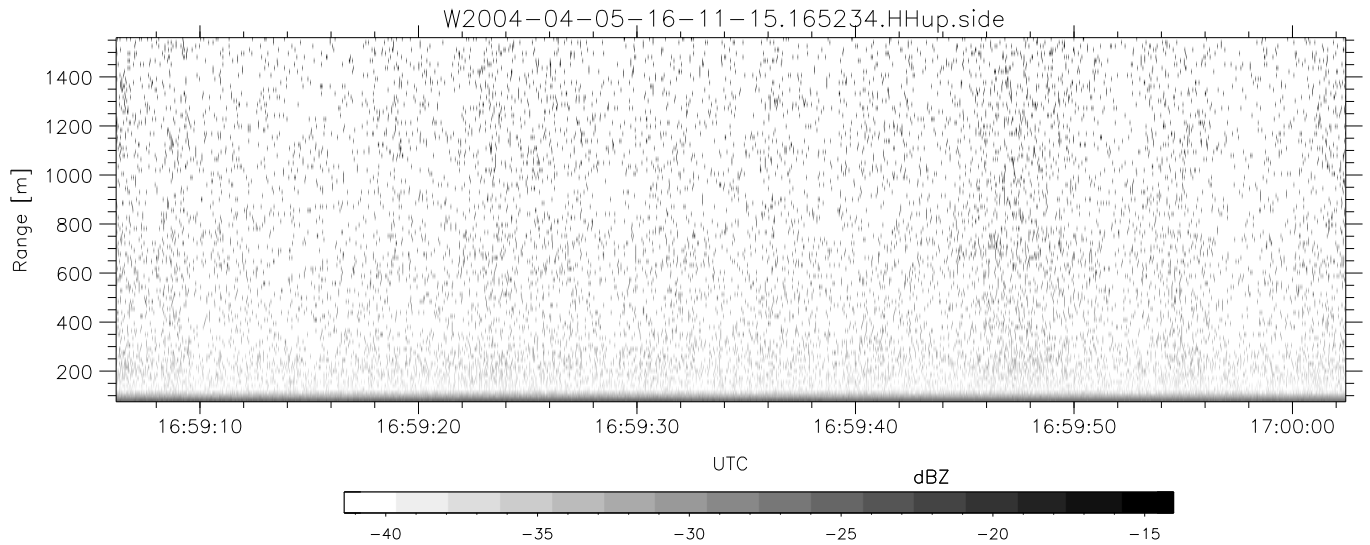
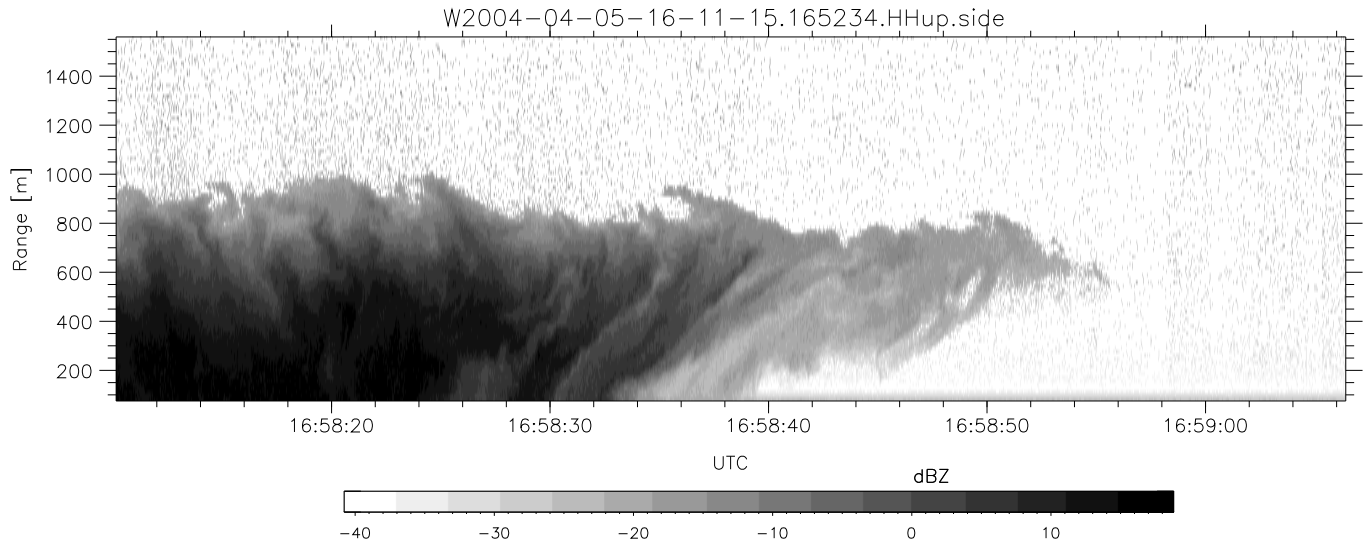
	Min	Max	Mean	Std	Varc%
hhN(dB)	-67.54	-64.15	-65.63	-75.66	9.9
vvN(dB)	-67.49	-63.78	-65.66	-75.65	10.0
hhL(dB)	-7.86	1.48	-0.97	-7.64	21.5
vvL(dB)	-0.75	6.00	2.16	-1.19	46.2
ppN(m/s)	-12.22	12.14	-0.04	4.14	
ppT(m/s)	-96.56	95.94	-0.31	32.74	
hh/vv(dB)	NaN	53.28	7.73	36.12	6907
vh/hh(dB)	NaN	-27.30	-39.44	-37.84	144.
hv/vv(dB)	NaN	-29.73	-49.77	-44.49	337.
hnjmp(dB)			-0.16		
vnjmp(dB)			-0.17		



CIFEX 2004 Data (cal/250ns+2.5/100ns-3.5/500ns: 53.0,50.0)

W2004-04-05-16-11-15 - PPMAG4, IRIG:1/0/2
 UTC: 16:11:15.75 to 17:08:47.42, Dur: 3452s
 TimeLngth: 3451.71s, TimeInt: 28ms (35.4pps)
 TimeCor=-13.0s, PPS(min,max,med): 35,36,35
 Timeint/DSPdiff(mn,min,mx):28,28,28/28,28,28
 Prof: 335 to 122698, NumProf(r/t): 17571/122363
 ProcTime/Recs: 16:52:34-17:00:49/87855-105425
 ADacqtime: 25ms; DRate: 198.4KB/s; Flags: 0, 0, 0
 Pulse: 275ns, IFilt: 5.0MHz; ppPol: HH HV VV
 TxPol: HHVV, PRF: 20 10 20 10 kHz, Noiseflg:4,2
 Range: Delay 75m, Spacing 15m, Gates 100
 Ave. Pulses: 84, Rng/Prof Aspect@90m/s: 5.9

	Min	Max	Mean	Std	Varc%
hhN(dB)	-67.54	-64.15	-65.63	-75.66	9.9
vvN(dB)	-67.49	-63.78	-65.66	-75.65	10.0
hhL(dB)	-7.86	1.48	-0.97	-7.64	21.5
vvL(dB)	-0.75	6.00	2.16	-1.19	46.2
ppN(m/s)	-12.22	12.14	-0.04	4.14	
ppT(m/s)	-96.56	95.94	-0.31	32.74	
hh/vv(dB)	NaN	53.28	7.73	36.12	6907
vh/hh(dB)	NaN	-27.30	-39.44	-37.84	144.
hv/vv(dB)	NaN	-29.73	-49.77	-44.49	337.
hnjmp(dB)			-0.16		
vnjmp(dB)			-0.17		



CIFEX 2004 Data (cal/250ns+2.5/100ns-3.5/500ns: 53.0,50.0)

W2004-04-05-16-11-15 - PPMAG4, IRIG:1/0/2
 UTC: 16:11:15.75 to 17:08:47.42, Dur: 3452s
 TimeLngth: 3451.71s, TimeInt: 28ms (35.4pps)
 TimeCor=-13.0s, PPS(min,max,med): 35,36,35
 Timeint/DSPdiff(mn,min,mx):28,28,28/28,28,28
 Prof: 335 to 122698, NumProf(r/t): 17571/122363
 ProcTime/Recs: 16:52:34-17:00:49/87855-105425
 ADacqtime: 25ms; DRate: 198.4KB/s; Flags: 0, 0, 0
 Pulse: 275ns, IFilt: 5.0MHz; ppPol: HH HV VV
 TxPol: HHVV, PRF: 20 10 20 10 kHz, NoiseFlg:4,2
 Range: Delay 75m, Spacing 15m, Gates 100
 Ave. Pulses: 84, Rng/Prof Aspect@90m/s: 5.9

	Min	Max	Mean	Std	Varc%
hhN (dB)	-67.54	-64.15	-65.63	-75.66	9.9
vvN (dB)	-67.49	-63.78	-65.66	-75.65	10.0
hhL (dB)	-7.86	1.48	-0.97	-7.64	21.5
vvL (dB)	-0.75	6.00	2.16	-1.19	46.2
ppN (m/s)	-12.22	12.14	-0.04	4.14	
ppT (m/s)	-96.56	95.94	-0.31	32.74	
hh/vv (dB)	NaN	53.28	7.73	36.12	6907
vh/hh (dB)	NaN	-27.30	-39.44	-37.84	144.
hv/vv (dB)	NaN	-29.73	-49.77	-44.49	337.
hnjmp (dB)			-0.16		
vnjmp (dB)			-0.17		