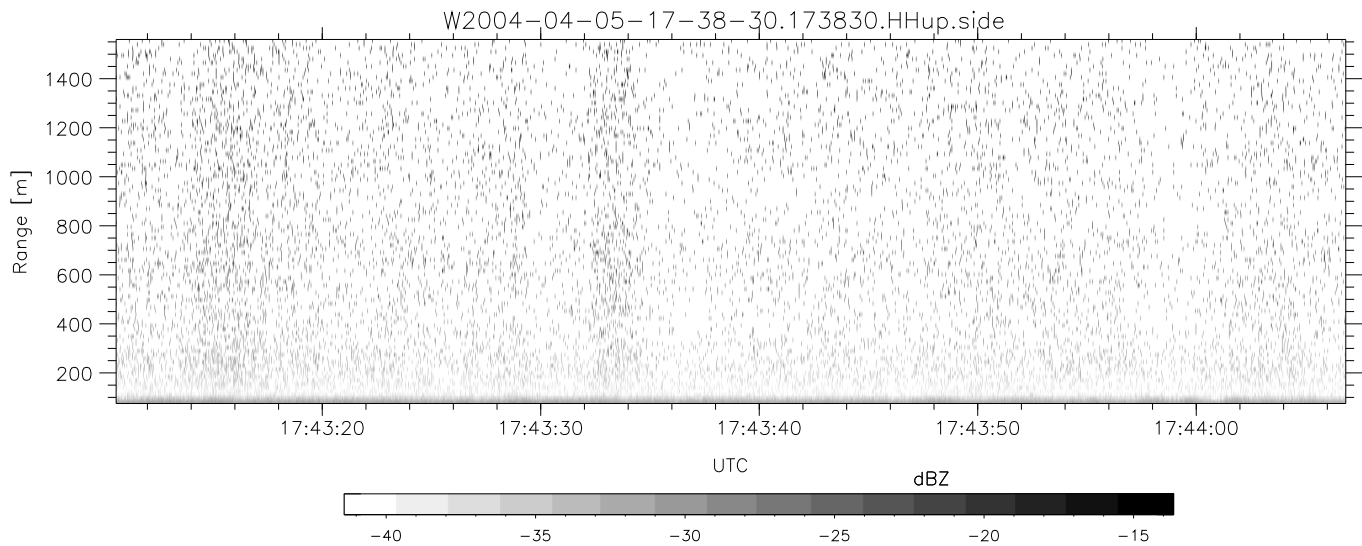
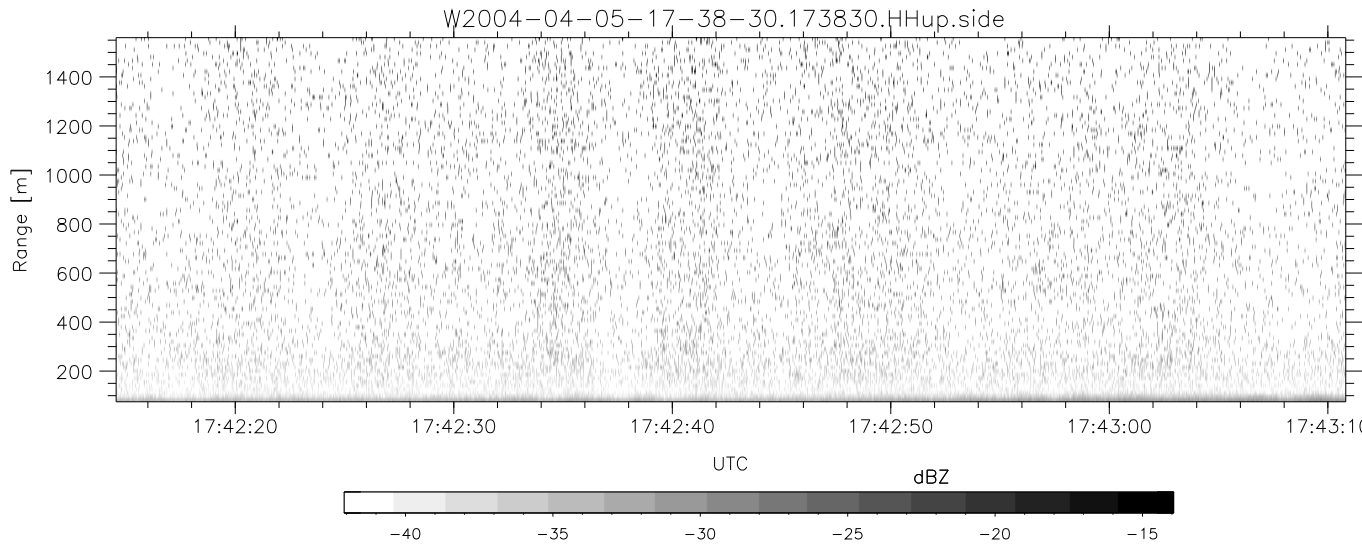
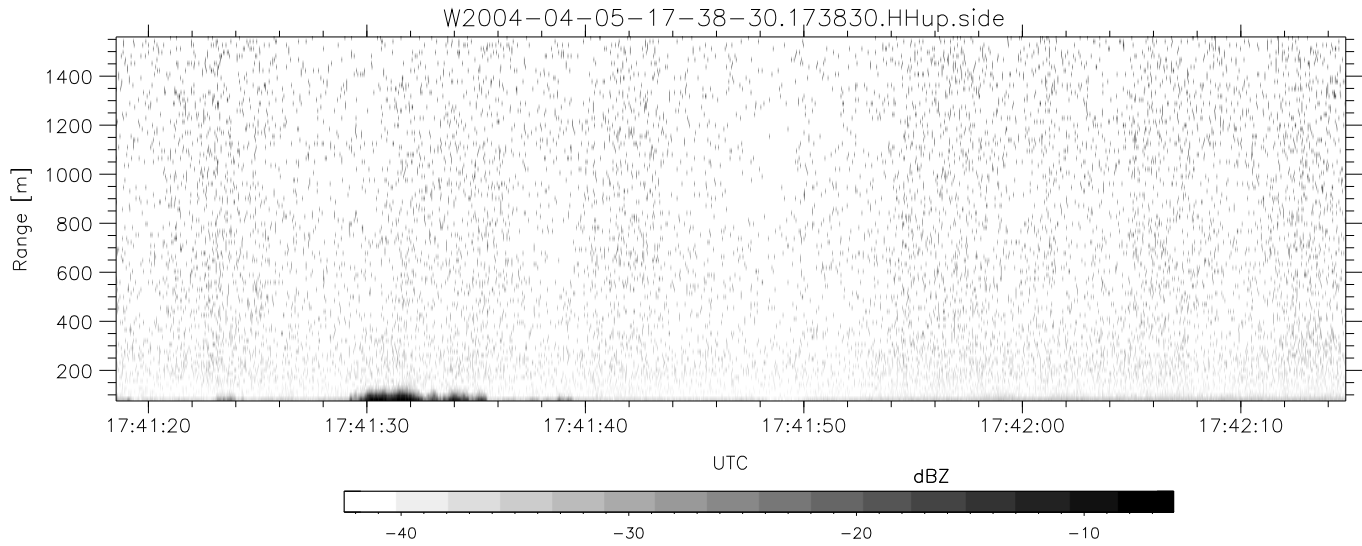


CIFEX 2004 Data (cal/250ns+2.5/100ns-3.5/500ns: 53.0,50.0)

W2004-04-05-17-38-30 - PPMAG4, IRIG:1/0/2  
 UTC: 17:38:30.48 to 19:00:59.93, Dur: 4949s  
 TimeLngth: 4949.55s, TimeInt: 28ms (35.4pps)  
 TimeCor=-13.0s, PPS(min,max,med): 35,36,35  
 Timeint/DSPdiff(mn,min,mx):28,28,32/28,28,32  
 Prof: 399 to 175860, NumProf(r/t): 17571/175461  
 ProcTime/Recs: 17:38:30-17:46:46/0-17570  
 ADacqtime: 25ms; DRate: 198.4KB/s; Flags: 0, 0, 0  
 Pulse: 275ns, IFfilt: 5.0MHz; ppPol: HH HV VV  
 TxPol: HHVV, PRF: 20 10 20 10 kHz, Noiseflg:2,3  
 Range: Delay 75m, Spacing 15m, Gates 100  
 Ave. Pulses: 84, Rng/Prof Aspect@90m/s: 5.9

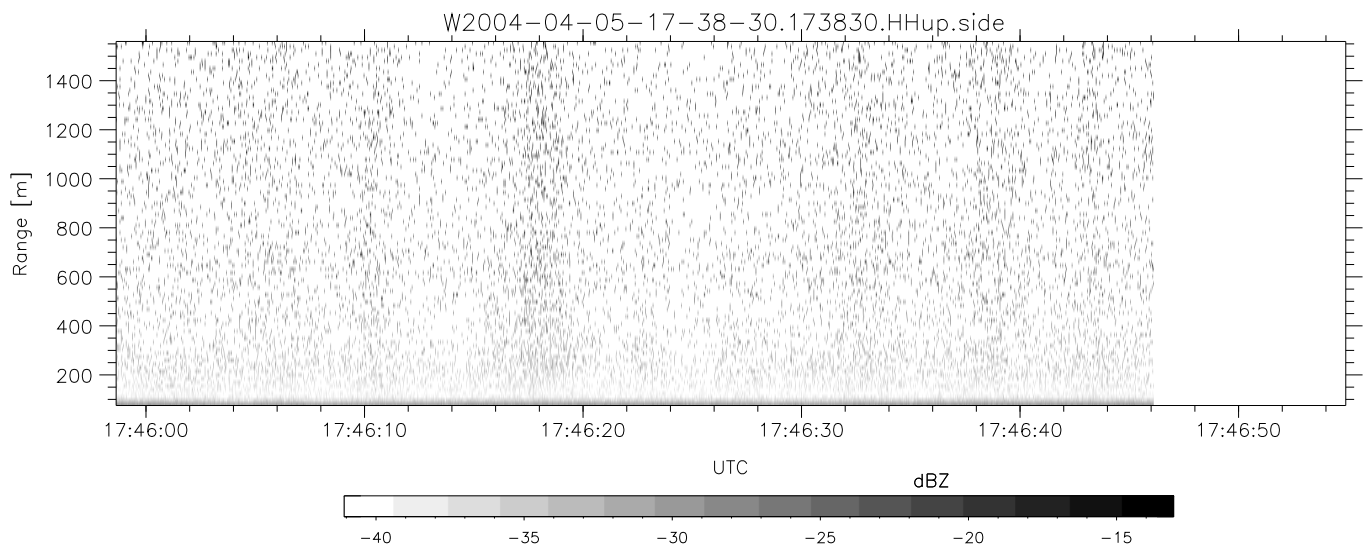
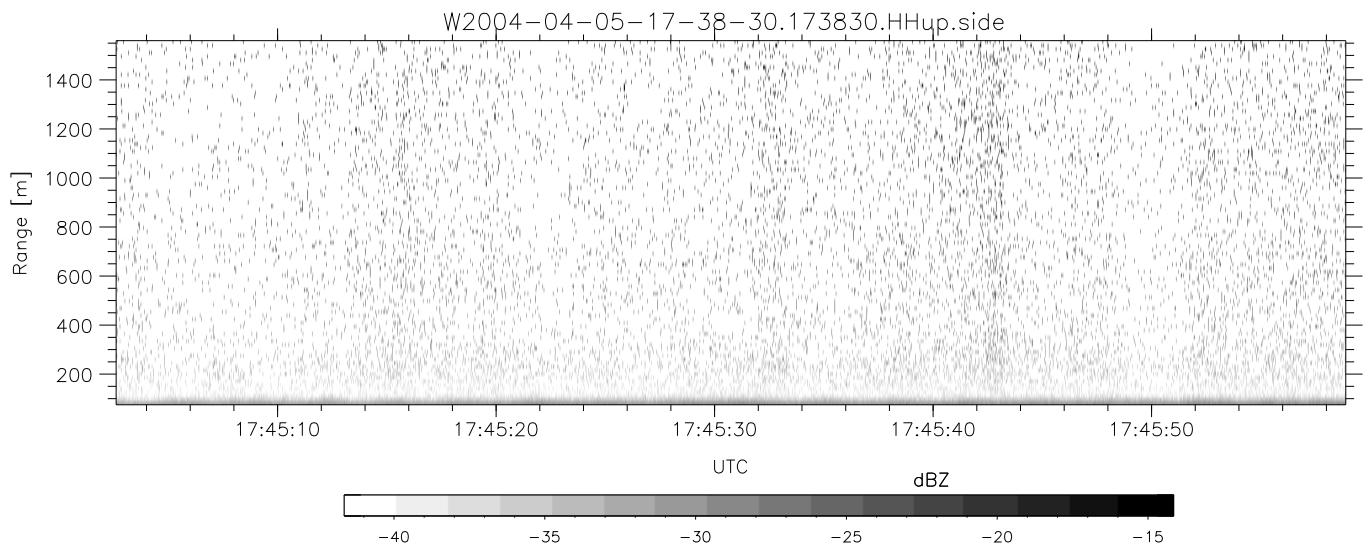
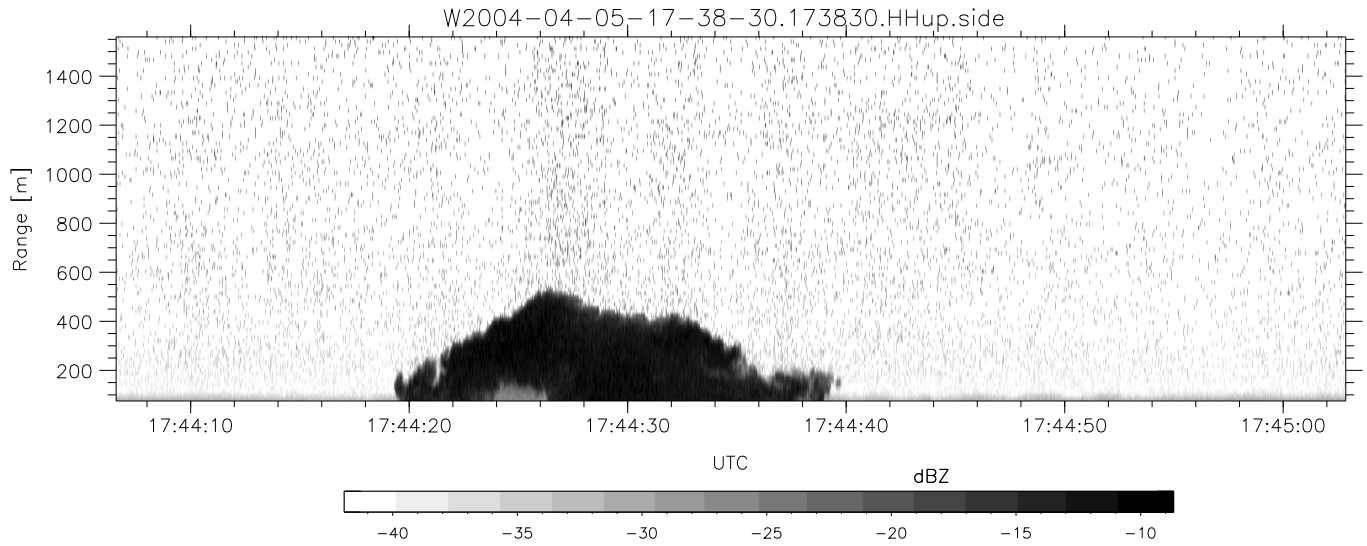
	Min	Max	Mean	Std	Varc%
hhN(dB)	-67.53	-63.94	-65.52	-75.61	9.8
vvN(dB)	-67.36	-63.96	-65.56	-75.56	10.0
hhL(dB)	-19.13	-0.65	-6.76	-9.18	57.4
vvL(dB)	-6.68	6.00	5.02	0.89	38.6
ppN(m/s)	-11.95	12.42	-0.06	4.13	
ppT(m/s)	-94.39	98.13	-0.51	32.61	
hh/vv(dB)	NaN	53.64	NaN	41.28	-283
vh/hh(dB)	-99	-99	-99	-99	-99
hv/vv(dB)	NaN	-33.24	-49.72	-43.90	382.0
hnjmp(dB)			0.17		
vnjmp(dB)			0.16		



CIFEX 2004 Data (cal/250ns+2.5/100ns-3.5/500ns: 53.0,50.0)

W2004-04-05-17-38-30 - PPMAG4, IRIG:1/0/2  
 UTC: 17:38:30.48 to 19:00:59.93, Dur: 4949s  
 TimeLngth: 4949.55s, TimeInt: 28ms (35.4pps)  
 TimeCor=-13.0s, PPS(min,max,med): 35,36,35  
 Timeint/DSPdiff(mn,min,mx):28,28,32/28,28,32  
 Prof: 399 to 175860, NumProf(r/t): 17571/175461  
 ProcTime/Recs: 17:38:30-17:46:46/0-17570  
 ADacqtime: 25ms; DRate: 198.4KB/s; Flags: 0, 0, 0  
 Pulse: 275ns, IFilt: 5.0MHz; ppPol: HH HV VV  
 TxPol: HHVV, PRF: 20 10 20 10 kHz, NoiseFlg:2,3  
 Range: Delay 75m, Spacing 15m, Gates 100  
 Ave. Pulses: 84, Rng/Prof Aspect@90m/s: 5.9

	Min	Max	Mean	Std	Varc%
hhN (dB)	-67.53	-63.94	-65.52	-75.61	9.8
vvN (dB)	-67.36	-63.96	-65.56	-75.56	10.0
hhL (dB)	-19.13	-0.65	-6.76	-9.18	57.4
vvL (dB)	-6.68	6.00	5.02	0.89	38.6
ppN (m/s)	-11.95	12.42	-0.06	4.13	
ppT (m/s)	-94.39	98.13	-0.51	32.61	
hh/vv (dB)	NaN	53.64	NaN	41.28	-283
vh/hh (dB)	-99	-99	-99	-99	-99
hv/vv (dB)	NaN	-33.24	-49.72	-43.90	382.
hnjmp (dB)			0.17		
vnjmp (dB)			0.16		



CIFEX 2004 Data (cal/250ns+2.5/100ns-3.5/500ns: 53.0,50.0)

W2004-04-05-17-38-30 - PPMAG4, IRIG:1/0/2  
 UTC: 17:38:30.48 to 19:00:59.93, Dur: 4949s  
 TimeLngth: 4949.55s, TimeInt: 28ms (35.4pps)  
 TimeCor=-13.0s, PPS(min,max,med): 35,36,35  
 Timeint/DSPdiff(mn,min,mx):28,28,32/28,28,32  
 Prof: 399 to 175860, NumProf(r/t): 17571/175461  
 ProcTime/Recs: 17:38:30-17:46:46/0-17570  
 ADacqtime: 25ms; DRate: 198.4KB/s; Flags: 0, 0, 0  
 Pulse: 275ns, IFfilt: 5.0MHz; ppPol: HH HV VV  
 TxPol: HHVV, PRF: 20 10 20 10 kHz, Noiseflg:2,3  
 Range: Delay 75m, Spacing 15m, Gates 100  
 Ave. Pulses: 84, Rng/Prof Aspect@90m/s: 5.9

	Min	Max	Mean	Std	Varc%
hhN (dB)	-67.53	-63.94	-65.52	-75.61	9.8
vvN (dB)	-67.36	-63.96	-65.56	-75.56	10.0
hhL (dB)	-19.13	-0.65	-6.76	-9.18	57.4
vvL (dB)	-6.68	6.00	5.02	0.89	38.6
ppN (m/s)	-11.95	12.42	-0.06	4.13	
ppT (m/s)	-94.39	98.13	-0.51	32.61	
hh/vv (dB)	NaN	53.64	NaN	41.28	-283
vh/hh (dB)	-99	-99	-99	-99	-99
hv/vv (dB)	NaN	-33.24	-49.72	-43.90	382.
hn_jmp (dB)			0.17		
vn_jmp (dB)			0.16		