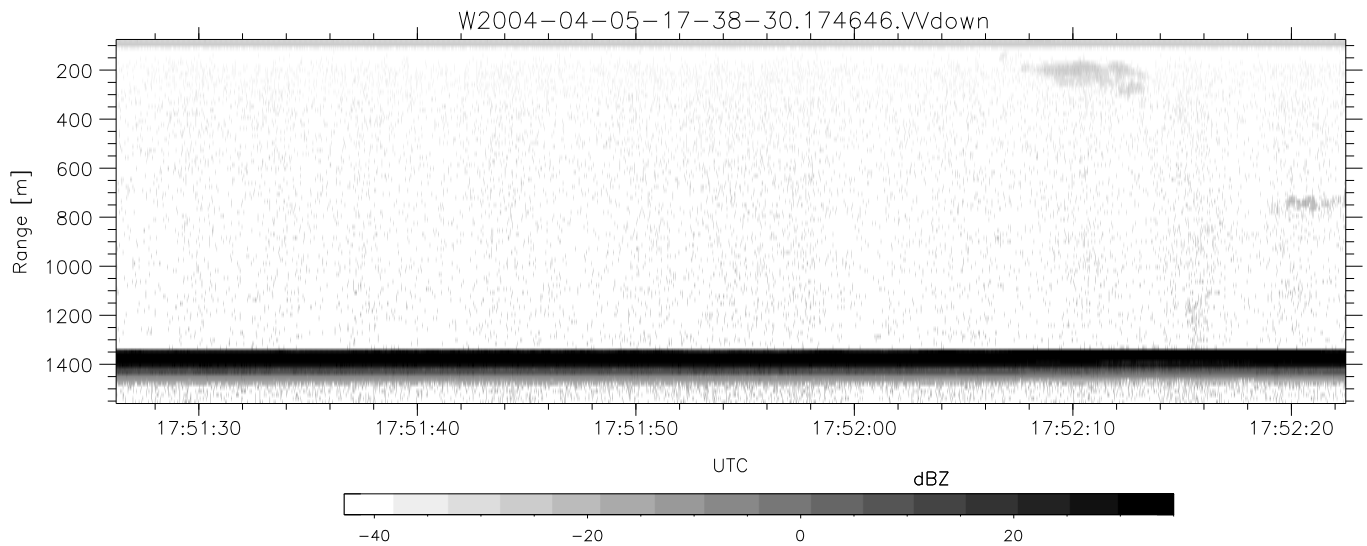
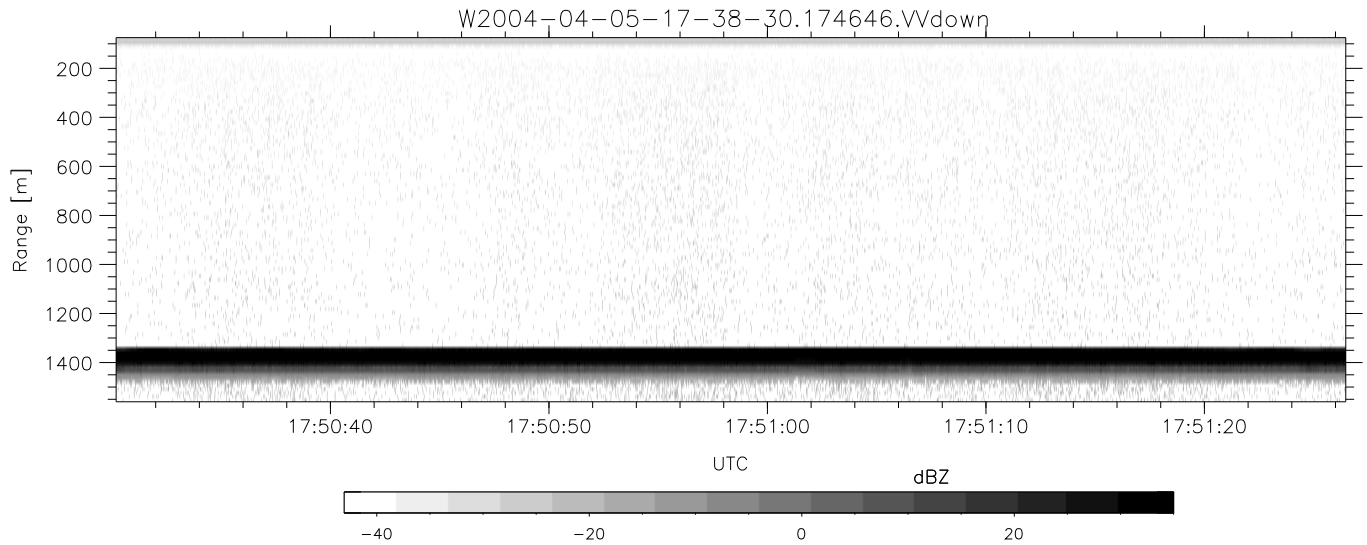
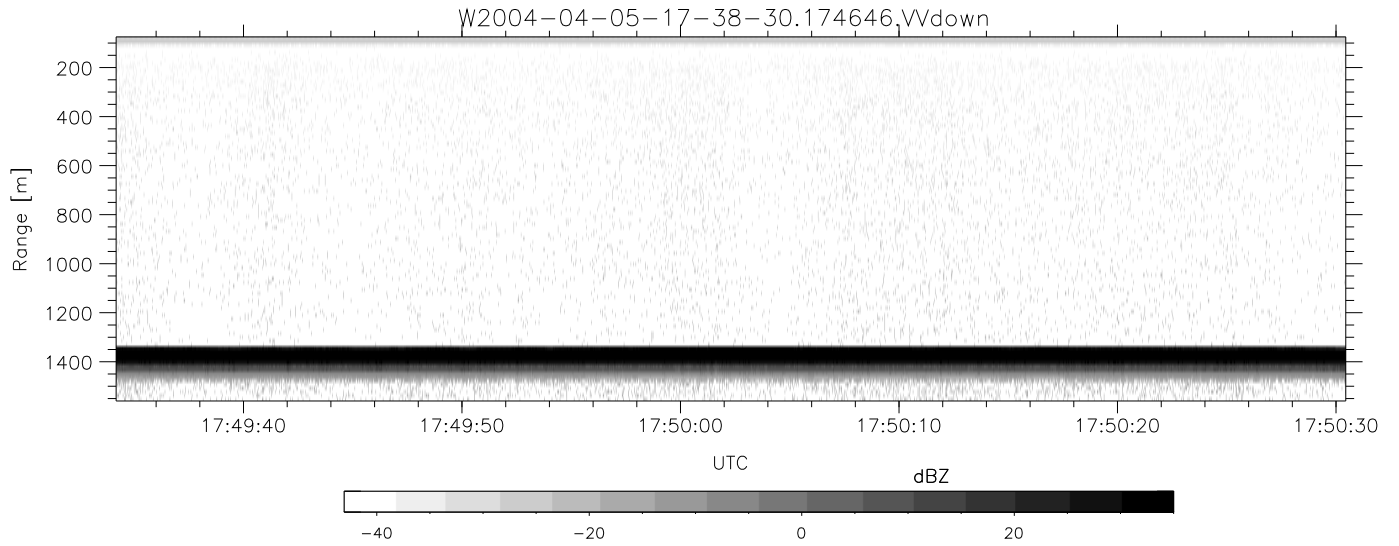


CIFEX 2004 Data (cal/250ns+2.5/100ns-3.5/500ns: 53.0,50.0)

W2004-04-05-17-38-30 - PPMAG4, IRIG:1/0/2
 UTC: 17:38:30.48 to 19:00:59.93, Dur: 4949s
 TimeLngth: 4949.55s, TimeInt: 28ms (35.4pps)
 TimeCor=-13.0s, PPS(min,max,med): 35,36,35
 Timeint/DSPdiff(mn,min,mx):28,28,33/28,28,28
 Prof: 399 to 175860, NumProf(r/t): 17571/175461
 ProcTime/Recs: 17:46:46-17:55:01/17571-35141
 ADacqtime: 25ms; DRate: 198.4KB/s; Flags: 0, 0, 0
 Pulse: 275ns, IFfilt: 5.0MHz; ppPol: HH HV VV
 TxPol: HHVV, PRF: 20 10 20 10 kHz, Noiseflg:2,1
 Range: Delay 75m, Spacing 15m, Gates 100
 Ave. Pulses: 84, Rng/Prof Aspect@90m/s: 5.9

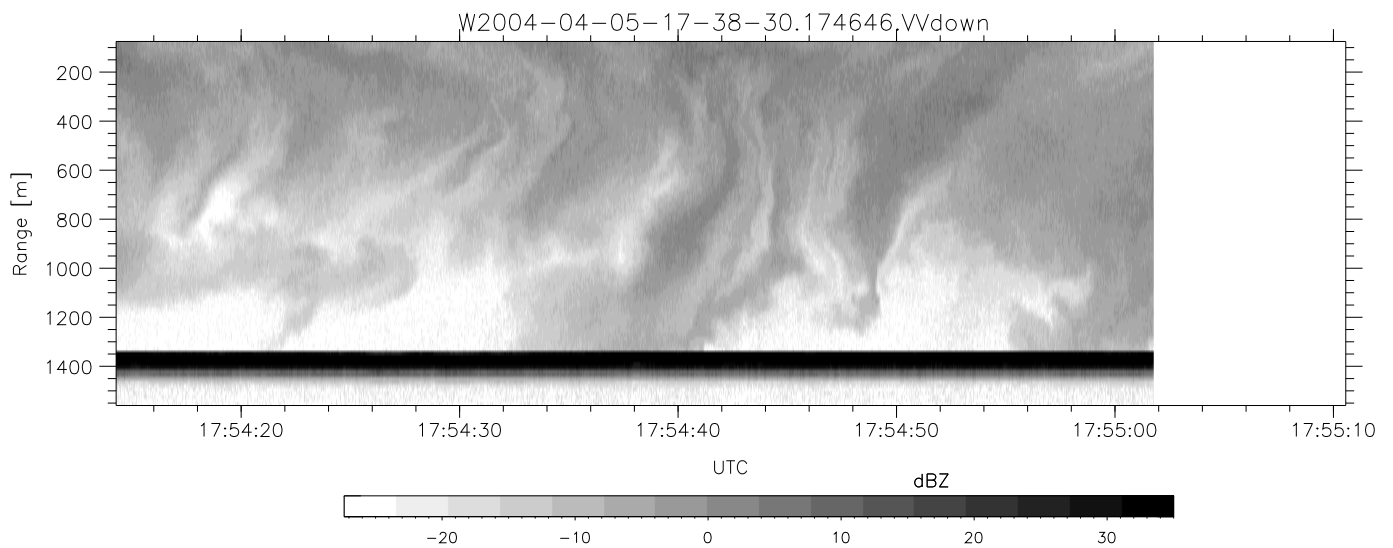
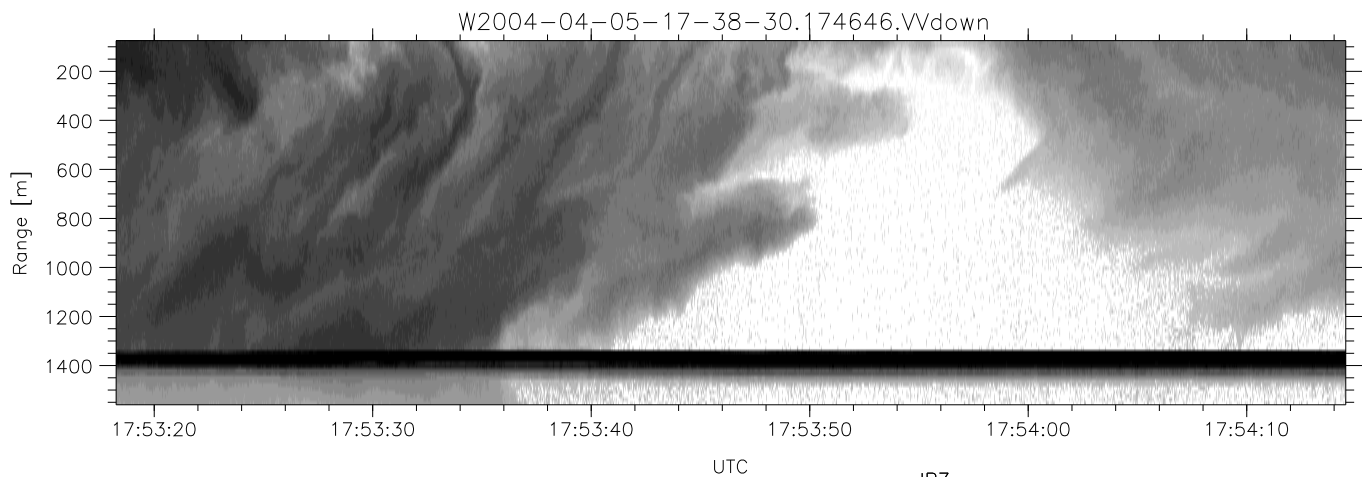
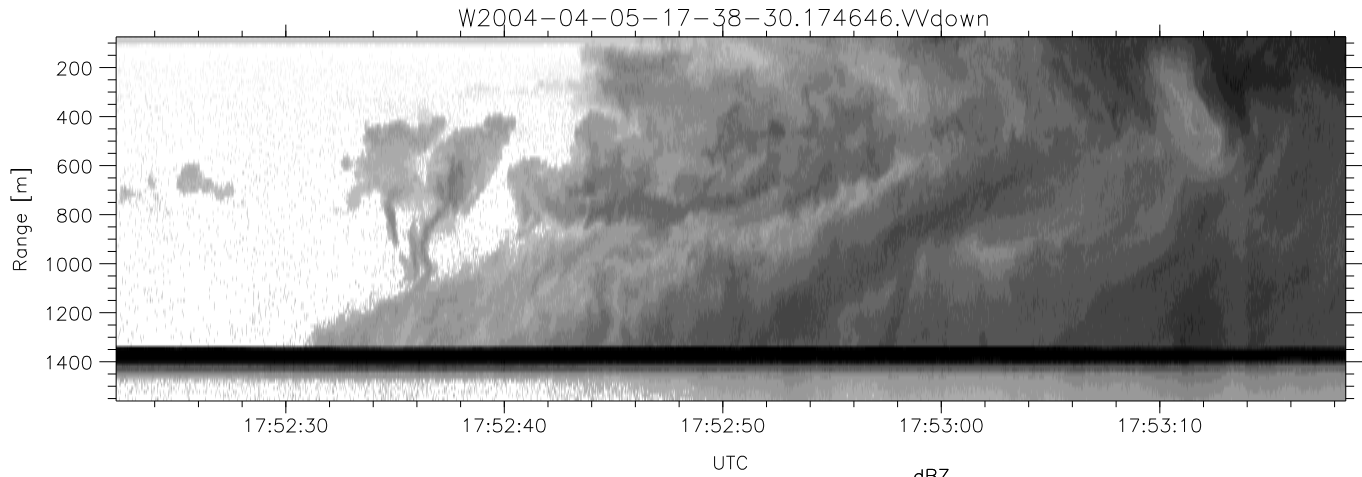
	Min	Max	Mean	Std	Varc%
hhN (dB)	-67.22	-63.84	-65.48	-75.53	9.9
vvN (dB)	-67.31	-64.02	-65.50	-75.46	10.1
hhL (dB)	-8.41	-2.62	-5.19	-14.04	13.0
vvL (dB)	6.00	6.00	6.00	-Inf	0.0
ppN (m/s)	-12.63	12.86	-0.02	4.16	
ppT (m/s)	-99.82	101.56	-0.17	32.83	
hh/vv (dB)	NaN	55.62	15.47	33.73	6691
vh/hh (dB)	NaN	-20.90	-34.31	-34.02	106.
hv/vv (dB)	NaN	-33.60	-48.89	-43.57	341.
hn_jmp (dB)			-0.16		
vn_jmp (dB)			-0.16		



CIFEX 2004 Data (cal/250ns+2.5/100ns-3.5/500ns: 53.0,50.0)

W2004-04-05-17-38-30 - PPMAG4, IRIG:1/0/2
 UTC: 17:38:30.48 to 19:00:59.93, Dur: 4949s
 TimeLngth: 4949.55s, TimeInt: 28ms (35.4pps)
 TimeCor=-13.0s, PPS(min,max,med): 35,36,35
 Timeint/DSPdiff(mn,min,mx):28,28,33/28,28,28
 Prof: 399 to 175860, NumProf(r/t): 17571/175461
 ProcTime/Recs: 17:46:46-17:55:01/17571-35141
 ADacqtime: 25ms; DRate: 198.4KB/s; Flags: 0, 0, 0
 Pulse: 275ns, IFfilt: 5.0MHz; ppPol: HH HV VV
 TxPol: HHVV, PRF: 20 10 20 10 kHz, Noiseflg:2,1
 Range: Delay 75m, Spacing 15m, Gates 100
 Ave. Pulses: 84, Rng/Prof Aspect@90m/s: 5.9

	Min	Max	Mean	Std	Varc%
hhN(dB)	-67.22	-63.84	-65.48	-75.53	9.9
vvN(dB)	-67.31	-64.02	-65.50	-75.46	10.1
hhL(dB)	-8.41	-2.62	-5.19	-14.04	13.0
vvL(dB)	6.00	6.00	6.00	-Inf	0.0
ppN(m/s)	-12.63	12.86	-0.02	4.16	
ppT(m/s)	-99.82	101.56	-0.17	32.83	
hh/vv(dB)	NaN	55.62	15.47	33.73	6691
vh/hh(dB)	NaN	-20.90	-34.31	-34.02	106.
hv/vv(dB)	NaN	-33.60	-48.89	-43.57	341.
hnjmp(dB)			-0.16		
vnjmp(dB)			-0.16		



CIFEX 2004 Data (cal/250ns+2.5/100ns-3.5/500ns: 53.0,50.0)

W2004-04-05-17-38-30 - PPMAG4, IRIG:1/0/2
 UTC: 17:38:30.48 to 19:00:59.93, Dur: 4949s
 TimeLngth: 4949.55s, TimeInt: 28ms (35.4pps)
 TimeCor=-13.0s, PPS(min,max,med): 35,36,35
 Timeint/DSPdiff(mn,min,mx):28,28,33/28,28,28
 Prof: 399 to 175860, NumProf(r/t): 17571/175461
 ProcTime/Recs: 17:46:46-17:55:01/17571-35141
 ADacqtime: 25ms; DRate: 198.4KB/s; Flags: 0, 0, 0
 Pulse: 275ns, IFilt: 5.0MHz; ppPol: HH HV VV
 TxPol: HHVV, PRF: 20 10 20 10 kHz, NoiseFlg:2,1
 Range: Delay 75m, Spacing 15m, Gates 100
 Ave. Pulses: 84, Rng/Prof Aspect@90m/s: 5.9

	Min	Max	Mean	Std	Varc%
hhN(dB)	-67.22	-63.84	-65.48	-75.53	9.9
vvN(dB)	-67.31	-64.02	-65.50	-75.46	10.1
hhL(dB)	-8.41	-2.62	-5.19	-14.04	13.0
vvL(dB)	6.00	6.00	6.00	-Inf	0.0
ppN(m/s)	-12.63	12.86	-0.02	4.16	
ppT(m/s)	-99.82	101.56	-0.17	32.83	
hh/vv(dB)	NaN	55.62	15.47	33.73	6691
vh/hh(dB)	NaN	-20.90	-34.31	-34.02	106.
hv/vv(dB)	NaN	-33.60	-48.89	-43.57	341.
hnjmp(dB)			-0.16		
vnjmp(dB)			-0.16		