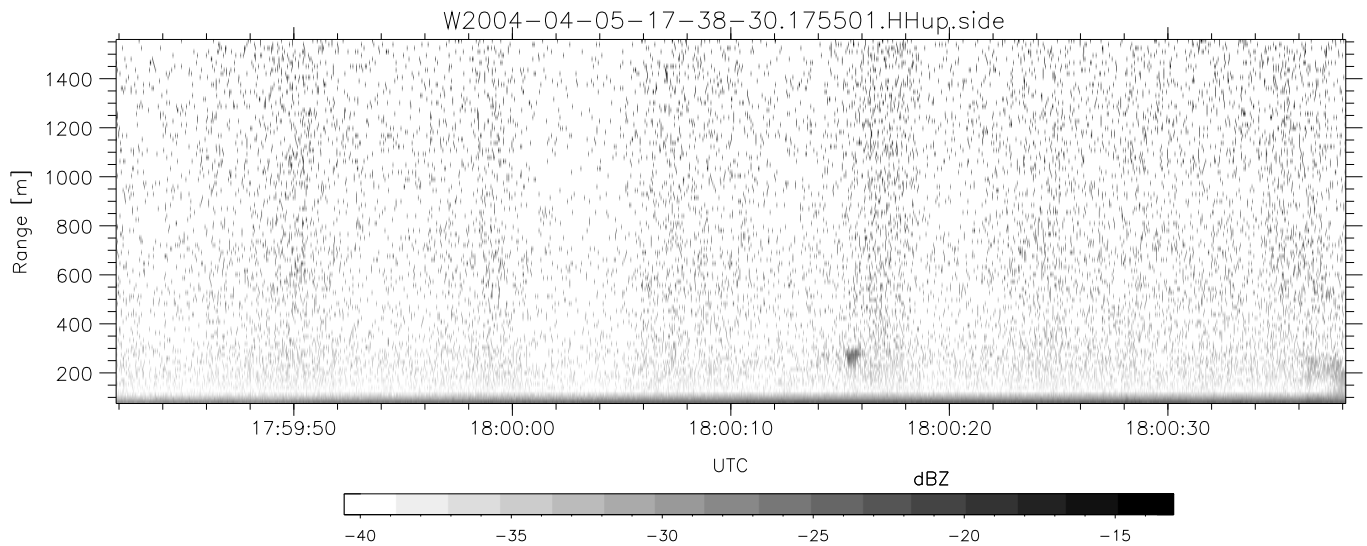
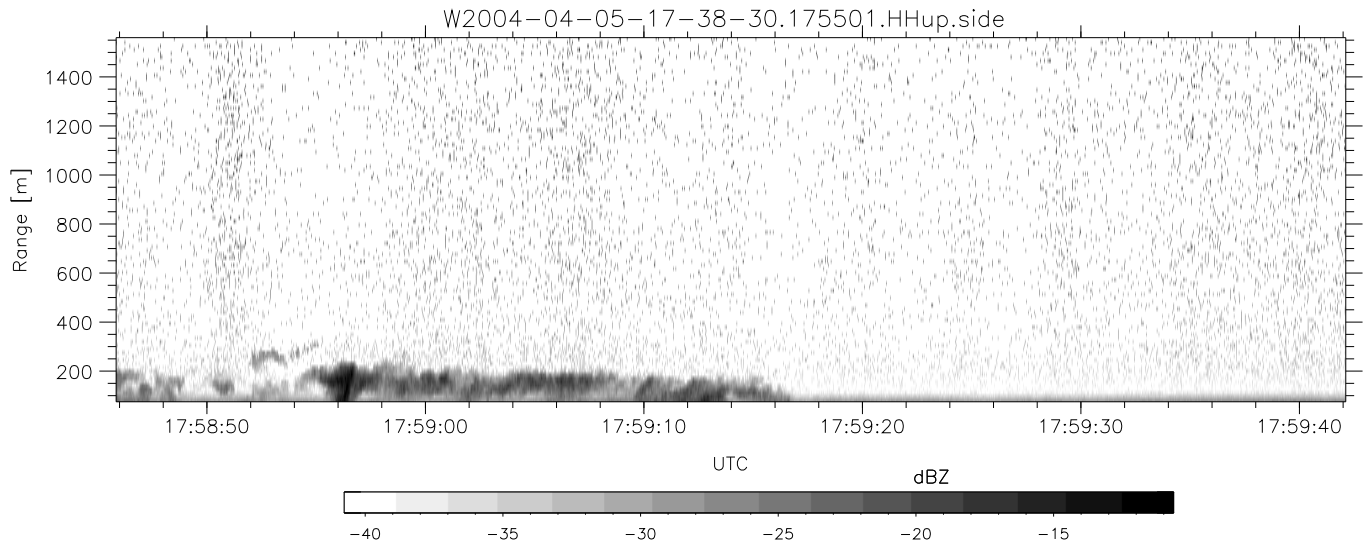
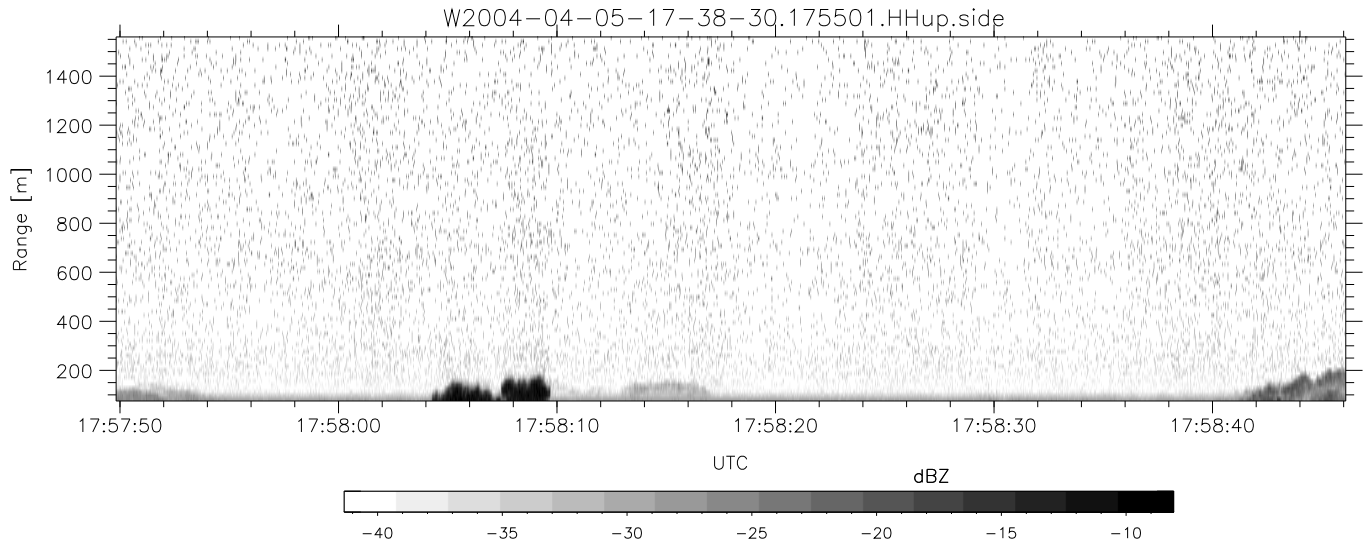


CIFEX 2004 Data (cal/250ns+2.5/100ns-3.5/500ns: 53.0,50.0)

W2004-04-05-17-38-30 - PPMAG4, IRIG:1/0/2  
 UTC: 17:38:30.48 to 19:00:59.93, Dur: 4949s  
 TimeLngth: 4949.38s, TimeInt: 28ms (35.5pps)  
 TimeCor=-13.0s, PPS(min,max,med): 35,36,35  
 Timeint/DSPdiff(mn,min,mx):28,28,35/28,28,35  
 Prof: 399 to 175860, NumProf(r/t): 17571/175461  
 ProcTime/Recs: 17:55:01-18:03:17/35142-52712  
 ADacqtime: 25ms; DRate: 198.4KB/s; Flags: 0, 0, 0  
 Pulse: 275ns, IFilt: 5.0MHz; ppPol: HH HV VV  
 TxPol: HHV, PRF: 20 10 20 10 kHz, NoiseFlg:2,1  
 Range: Delay 75m, Spacing 15m, Gates 100  
 Ave. Pulses: 84, Rng/Prof Aspect@90m/s: 5.9

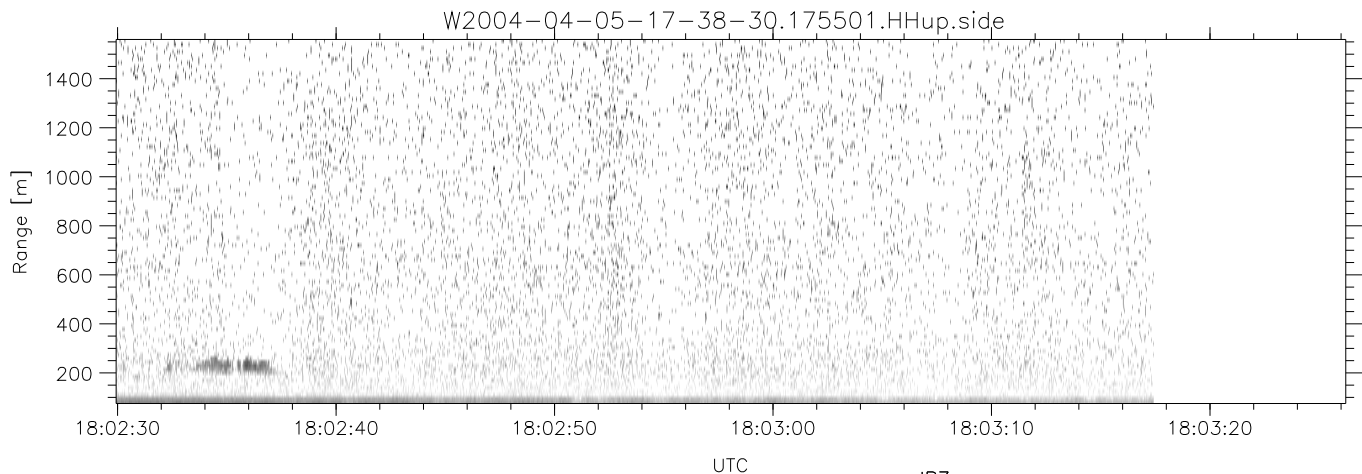
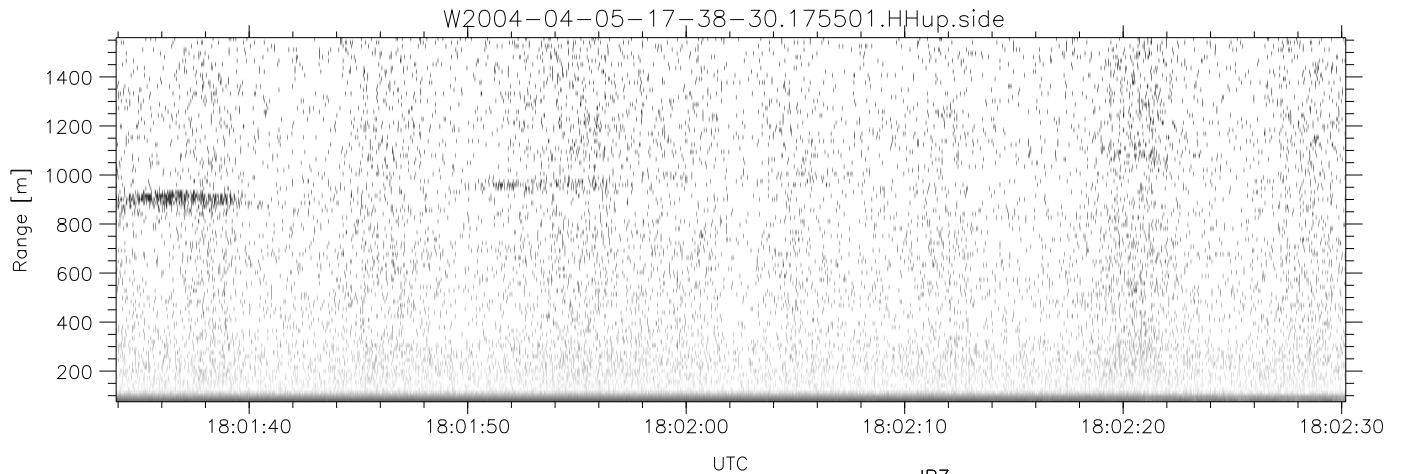
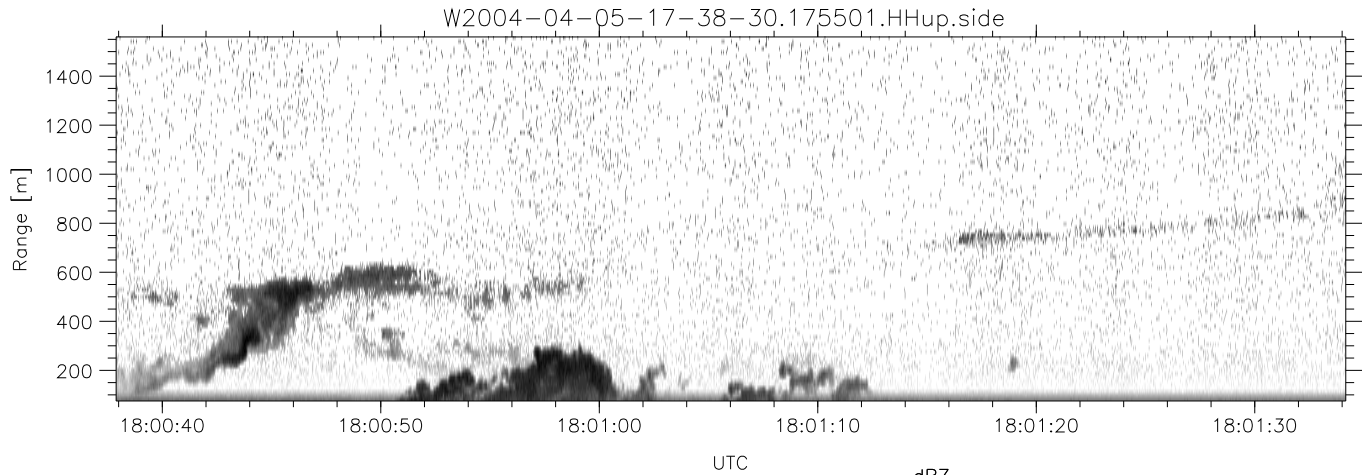
	Min	Max	Mean	Std	Varc%
hhN (dB)	-67.32	-63.76	-65.45	-75.50	9.9
vvN (dB)	-67.32	-63.98	-65.48	-75.46	10.1
hhL (dB)	-14.54	2.52	-2.54	-4.39	65.5
vvL (dB)	2.21	6.00	5.73	-3.33	12.4
ppN (m/s)	-12.21	12.57	-0.01	4.13	
ppT (m/s)	-96.45	99.28	-0.08	32.64	
hh/vv (dB)	NaN	55.86	16.18	35.73	9027
vh/hh (dB)	NaN	-27.01	-33.31	-34.89	69.5
hv/vv (dB)	NaN	-33.19	-51.62	-44.89	470.
hn_jmp (dB)				0.16	
vn_jmp (dB)				0.17	



CIFEX 2004 Data (cal/250ns+2.5/100ns-3.5/500ns: 53.0,50.0)

W2004-04-05-17-38-30 - PPMAG4, IRIG:1/0/2  
 UTC: 17:38:30.48 to 19:00:59.93, Dur: 4949s  
 TimeLngth: 4949.38s, TimeInt: 28ms (35.5pps)  
 TimeCor=-13.0s, PPS(min,max,med): 35,36,35  
 Timeint/DSPdiff(mn,min,mx):28,28,35/28,28,35  
 Prof: 399 to 175860, NumProf(r/t): 17571/175461  
 ProcTime/Recs: 17:55:01-18:03:17/35142-52712  
 ADacqtime: 25ms; DRate: 198.4KB/s; Flags: 0, 0, 0  
 Pulse: 275ns, IFfilt: 5.0MHz; ppPol: HH HV VV  
 TxPol: HHVV, PRF: 20 10 20 10 kHz, Noiseflg:2,1  
 Range: Delay 75m, Spacing 15m, Gates 100  
 Ave. Pulses: 84, Rng/Prof Aspect@90m/s: 5.9

	Min	Max	Mean	Std	Varc%
hhN (dB)	-67.32	-63.76	-65.45	-75.50	9.9
vvN (dB)	-67.32	-63.98	-65.48	-75.46	10.1
hhL (dB)	-14.54	2.52	-2.54	-4.39	65.5
vvL (dB)	2.21	6.00	5.73	-3.33	12.4
ppN (m/s)	-12.21	12.57	-0.01	4.13	
ppT (m/s)	-96.45	99.28	-0.08	32.64	
hh/vv (dB)	NaN	55.86	16.18	35.73	9027
vh/hh (dB)	NaN	-27.01	-33.31	-34.89	69.5
hv/vv (dB)	NaN	-33.19	-51.62	-44.89	470.
hnjmp (dB)				0.16	
vnjmp (dB)				0.17	



CIFEX 2004 Data (cal/250ns+2.5/100ns-3.5/500ns: 53.0,50.0)

W2004-04-05-17-38-30 - PPMAG4, IRIG:1/0/2  
 UTC: 17:38:30.48 to 19:00:59.93, Dur: 4949s  
 TimeLngth: 4949.38s, TimeInt: 28ms (35.5pps)  
 TimeCor=-13.0s, PPS(min,max,med): 35,36,35  
 Timeint/DSPdiff(mn,min,mx):28,28,35/28,28,35  
 Prof: 399 to 175860, NumProf(r/t): 17571/175461  
 ProcTime/Recs: 17:55:01-18:03:17/35142-52712  
 ADacqtime: 25ms; DRate: 198.4KB/s; Flags: 0, 0, 0  
 Pulse: 275ns, IFfilt: 5.0MHz; ppPol: HH HV VV  
 TxPol: HHVV, PRF: 20 10 20 10 kHz, Noiseflg:2,1  
 Range: Delay 75m, Spacing 15m, Gates 100  
 Ave. Pulses: 84, Rng/Prof Aspect@90m/s: 5.9

	Min	Max	Mean	Std	Varc%
hhN (dB)	-67.32	-63.76	-65.45	-75.50	9.9
vvN (dB)	-67.32	-63.98	-65.48	-75.46	10.1
hhL (dB)	-14.54	2.52	-2.54	-4.39	65.5
vvL (dB)	2.21	6.00	5.73	-3.33	12.4
ppN (m/s)	-12.21	12.57	-0.01	4.13	
ppT (m/s)	-96.45	99.28	-0.08	32.64	
hh/vv (dB)	NaN	55.86	16.18	35.73	9027
vh/hh (dB)	NaN	-27.01	-33.31	-34.89	69.5
hv/vv (dB)	NaN	-33.19	-51.62	-44.89	470.
hn_jmp (dB)				0.16	
vn_jmp (dB)				0.17	