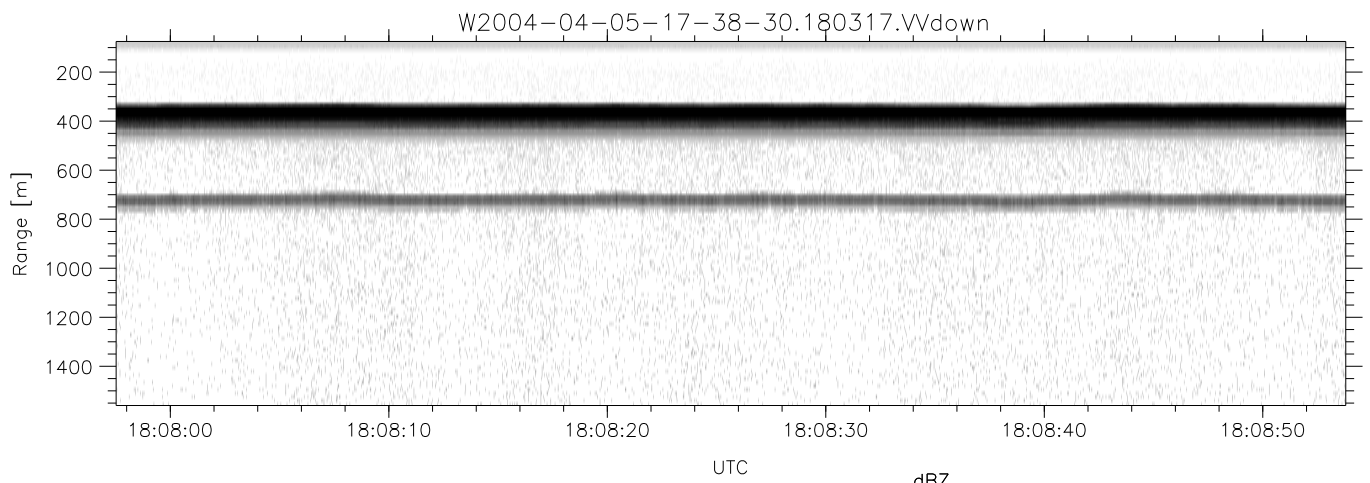
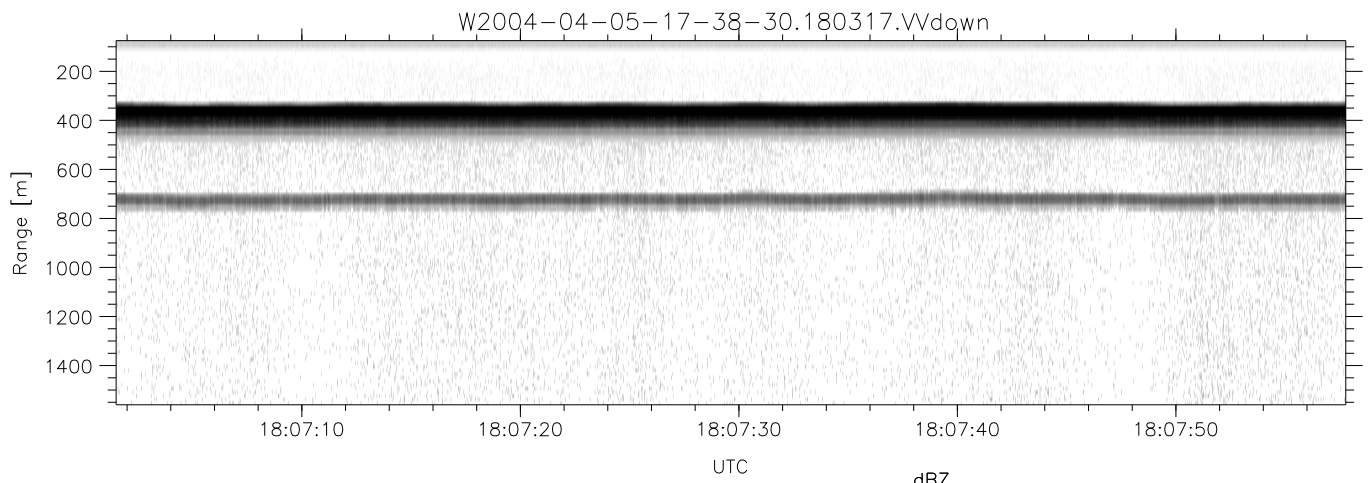
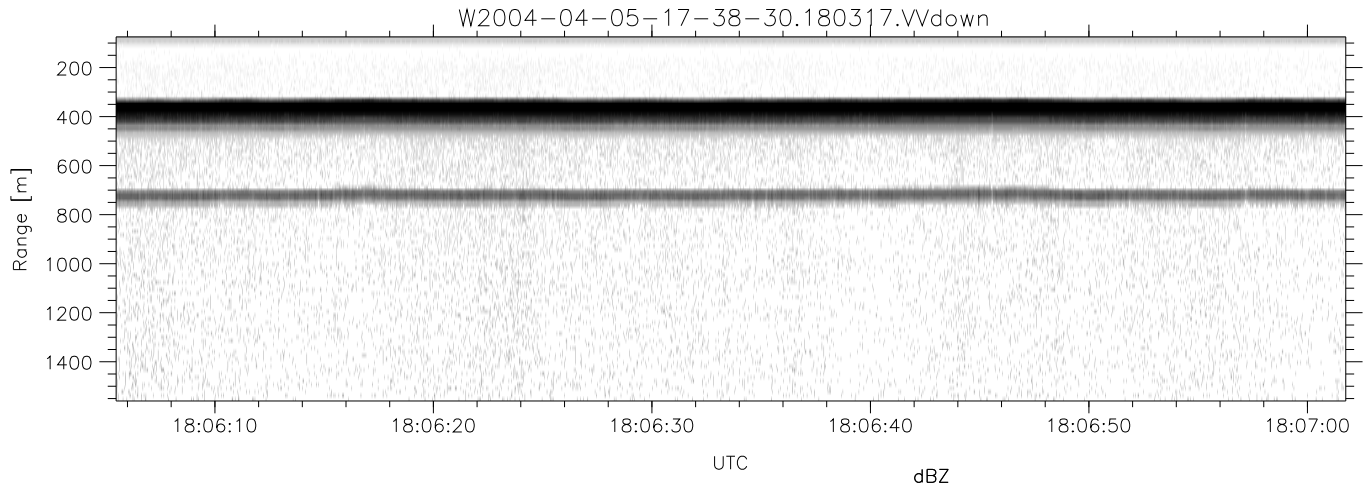


CIFEX 2004 Data (cal/250ns+2.5/100ns-3.5/500ns: 53.0,50.0)

W2004-04-05-17-38-30 - PPMAG4, IRIG:1/0/2
 UTC: 17:38:30.48 to 19:00:59.93, Dur: 4949s
 TimeLngth: 4949.55s, TimeInt: 28ms (35.4pps)
 TimeCor=-13.0s, PPS(min,max,med): 35,36,35
 Timeint/DSPdiff(mn,min,mx):28,28,30/28,28,30
 Prof: 399 to 175860, NumProf(r/t): 17571/175461
 ProcTime/Recs: 18:03:17-18:11:33/52713-70283
 ADacqtime: 25ms; DRate: 198.4KB/s; Flags: 0, 0, 0
 Pulse: 275ns, IFfilt: 5.0MHz; ppPol: HH HV VV
 TxPol: HHVV, PRF: 20 10 20 10 kHz, Noiseflg:4,3
 Range: Delay 75m, Spacing 15m, Gates 100
 Ave. Pulses: 84, Rng/Prof Aspect@90m/s: 5.9

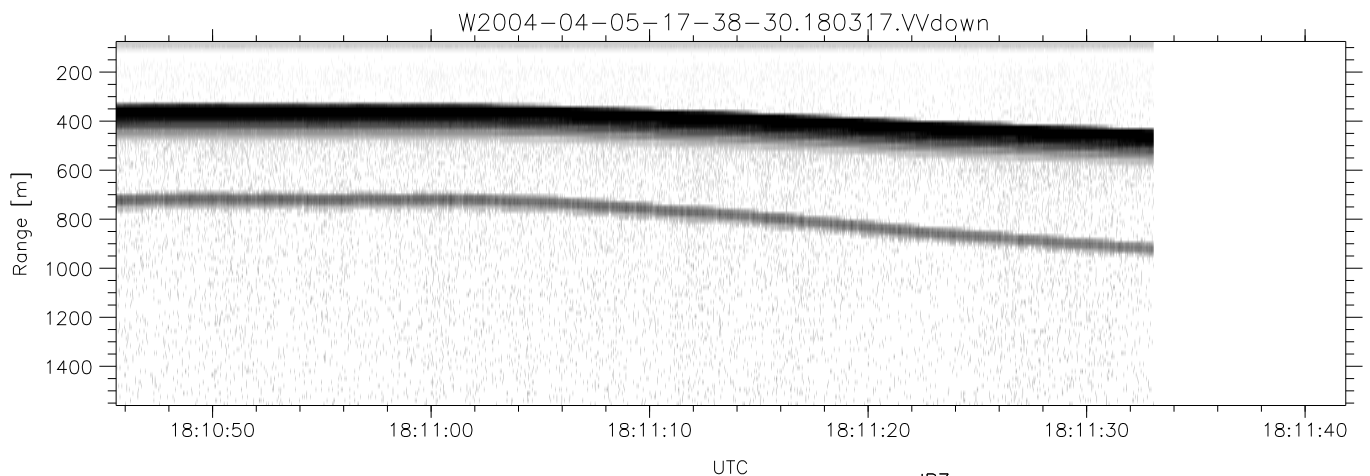
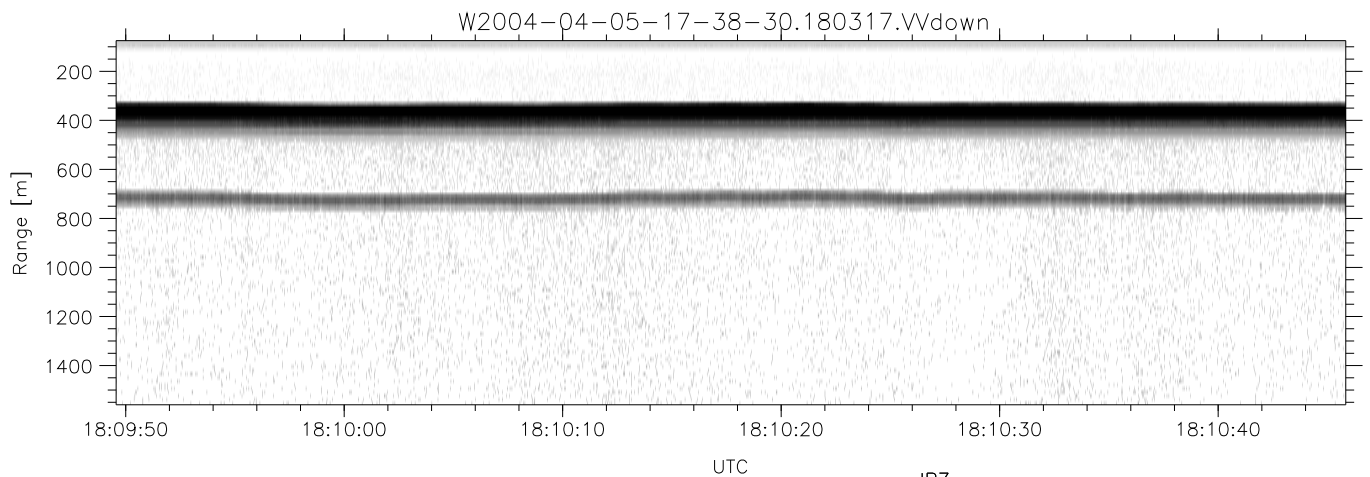
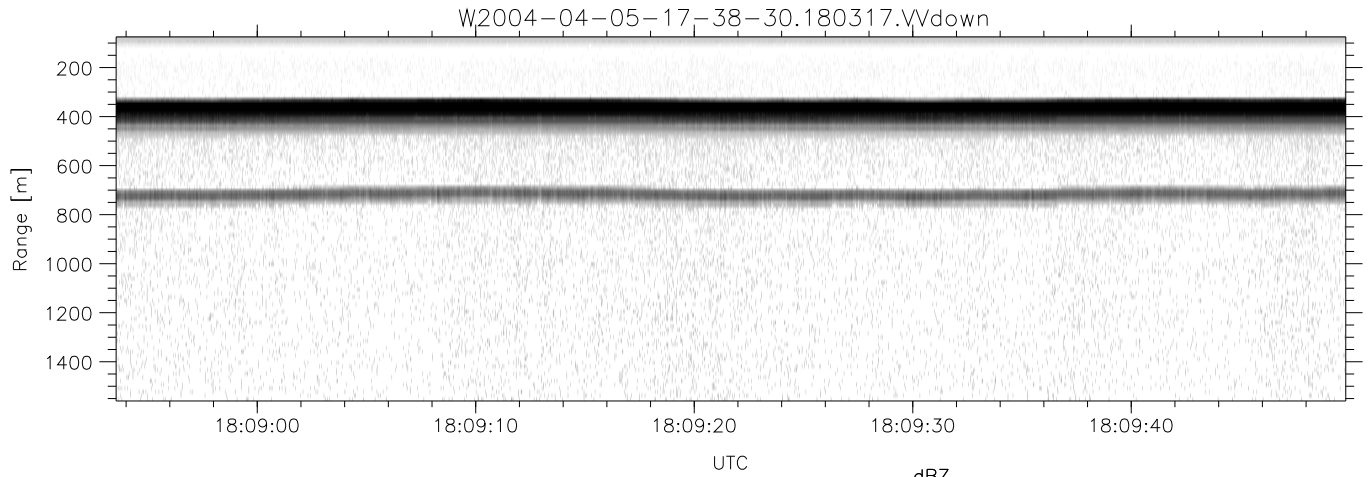
	Min	Max	Mean	Std	Varc%
hhN (dB)	-67.16	-63.81	-65.44	-75.54	9.8
vvN (dB)	-67.17	-63.80	-65.48	-75.55	9.8
hhL (dB)	-12.85	-5.77	-7.80	-15.74	16.0
vvL (dB)	5.80	6.00	6.00	-25.52	0.1
ppN (m/s)	-12.64	12.19	0.01	4.13	
ppT (m/s)	-99.82	96.32	0.08	32.60	
hh/vv (dB)	-99	-99	-99	-99	-99
vh/hh (dB)	-99	-99	-99	-99	-99
hv/vv (dB)	NaN	-33.98	-54.53	-46.85	586.
hnjmp (dB)			-0.17		
vnjmp (dB)			-0.16		



CIFEX 2004 Data (cal/250ns+2.5/100ns-3.5/500ns: 53.0,50.0)

W2004-04-05-17-38-30 - PPMAG4, IRIG:1/0/2
 UTC: 17:38:30.48 to 19:00:59.93, Dur: 4949s
 TimeLngth: 4949.55s, TimeInt: 28ms (35.4pps)
 TimeCor=-13.0s, PPS(min,max,med): 35,36,35
 Timeint/DSPdiff(mn,min,mx):28,28,30/28,28,30
 Prof: 399 to 175860, NumProf(r/t): 17571/175461
 ProcTime/Recs: 18:03:17-18:11:33/52713-70283
 ADacqtime: 25ms; DRate: 198.4KB/s; Flags: 0, 0, 0
 Pulse: 275ns, IFfilt: 5.0MHz; ppPol: HH HV VV
 TxPol: HHVV, PRF: 20 10 20 10 kHz, Noiseflg:4,3
 Range: Delay 75m, Spacing 15m, Gates 100
 Ave. Pulses: 84, Rng/Prof Aspect@90m/s: 5.9

	Min	Max	Mean	Std	Varc%
hhN (dB)	-67.16	-63.81	-65.44	-75.54	9.8
vvN (dB)	-67.17	-63.80	-65.48	-75.55	9.8
hhL (dB)	-12.85	-5.77	-7.80	-15.74	16.0
vvL (dB)	5.80	6.00	6.00	-25.52	0.1
ppN (m/s)	-12.64	12.19	0.01	4.13	
ppT (m/s)	-99.82	96.32	0.08	32.60	
hh/vv (dB)	-99	-99	-99	-99	-99
vh/hh (dB)	-99	-99	-99	-99	-99
hv/vv (dB)	NaN	-33.98	-54.53	-46.85	586.
hnjmp (dB)			-0.17		
vnjmp (dB)			-0.16		



CIFEX 2004 Data (cal/250ns+2.5/100ns-3.5/500ns: 53.0,50.0)

W2004-04-05-17-38-30 - PPMAG4, IRIG:1/0/2
 UTC: 17:38:30.48 to 19:00:59.93, Dur: 4949s
 TimeLngth: 4949.55s, TimeInt: 28ms (35.4pps)
 TimeCor=-13.0s, PPS(min,max,med): 35,36,35
 Timeint/DSPdiff(mn,min,mx):28,28,30/28,28,30
 Prof: 399 to 175860, NumProf(r/t): 17571/175461
 ProcTime/Recs: 18:03:17-18:11:33/52713-70283
 ADacqtime: 25ms; DRate: 198.4KB/s; Flags: 0, 0, 0
 Pulse: 275ns, IFilt: 5.0MHz; ppPol: HH HV VV
 TxPol: HHVV, PRF: 20 10 20 10 kHz, NoiseFlg:4,3
 Range: Delay 75m, Spacing 15m, Gates 100
 Ave. Pulses: 84, Rng/Prof Aspect@90m/s: 5.9

	Min	Max	Mean	Std	Varc%
hhN (dB)	-67.16	-63.81	-65.44	-75.54	9.8
vvN (dB)	-67.17	-63.80	-65.48	-75.55	9.8
hhL (dB)	-12.85	-5.77	-7.80	-15.74	16.0
vvL (dB)	5.80	6.00	6.00	-25.52	0.1
ppN (m/s)	-12.64	12.19	0.01	4.13	
ppT (m/s)	-99.82	96.32	0.08	32.60	
hh/vv (dB)	-99	-99	-99	-99	-99
vh/hh (dB)	-99	-99	-99	-99	-99
hv/vv (dB)	NaN	-33.98	-54.53	-46.85	586.
hnjmp (dB)			-0.17		
vnjmp (dB)			-0.16		