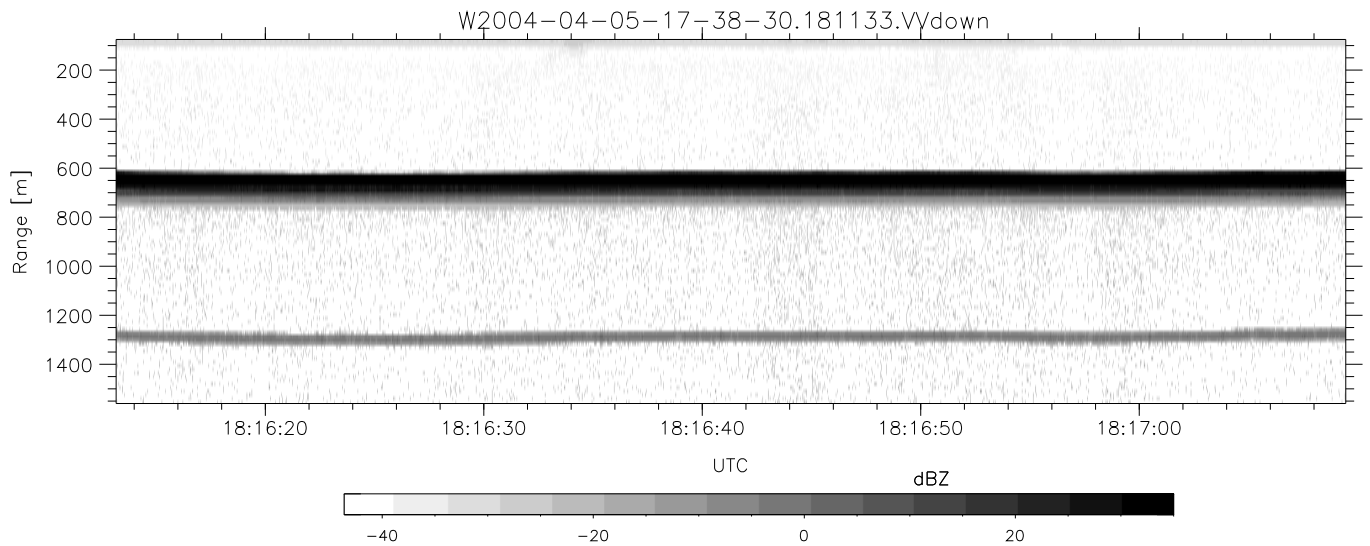
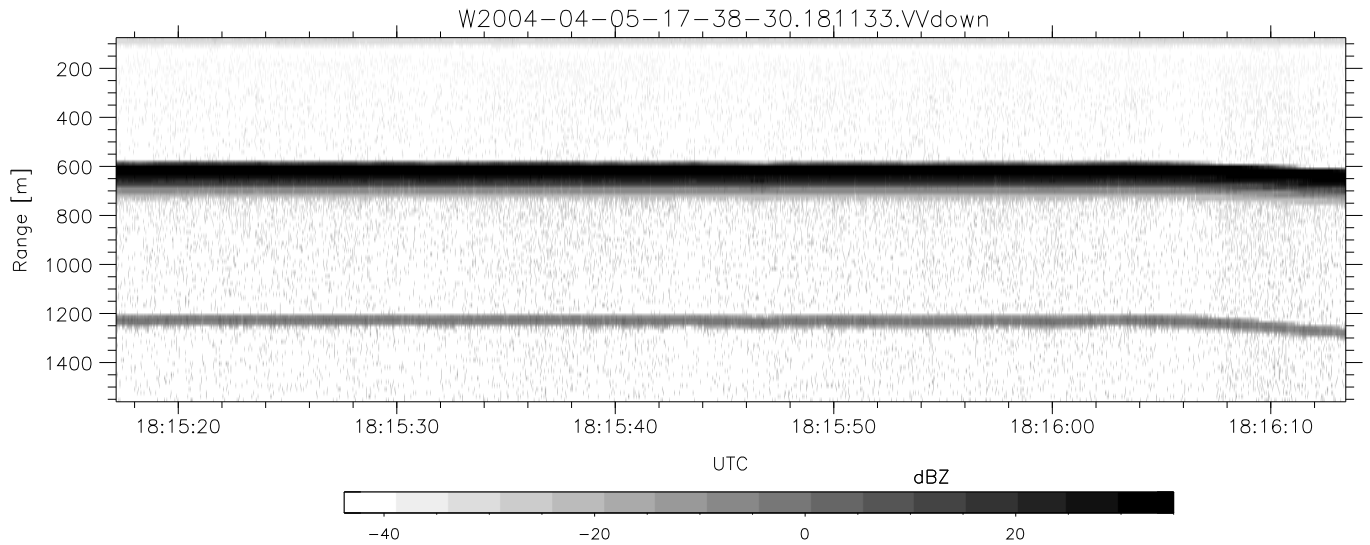
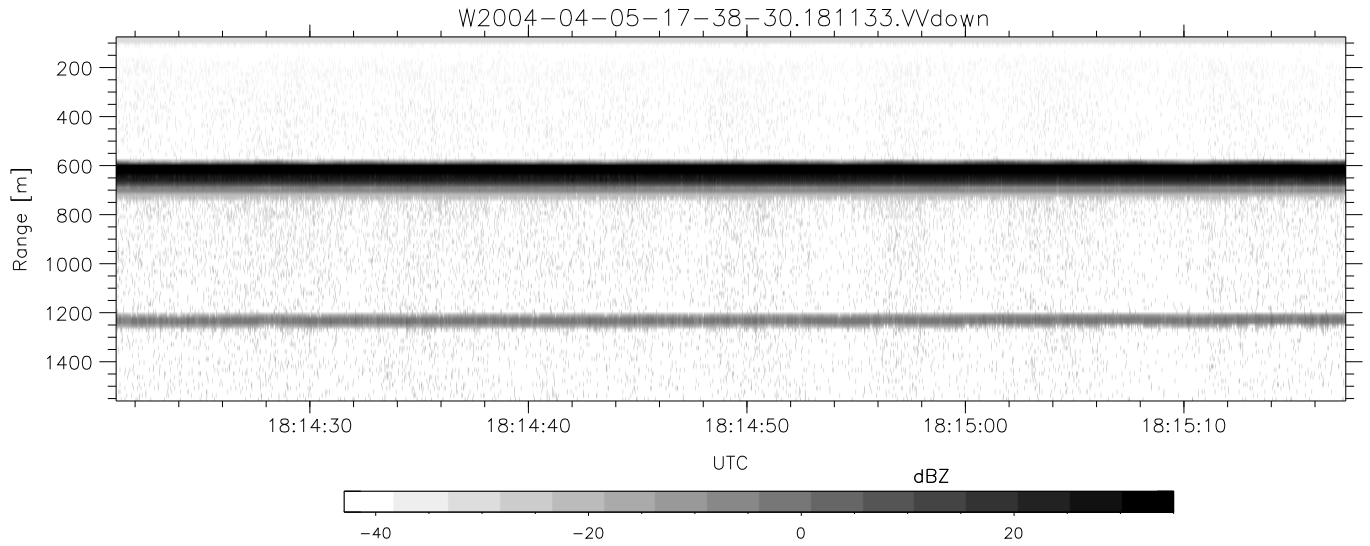


CIFEX 2004 Data (cal/250ns+2.5/100ns-3.5/500ns: 53.0,50.0)

W2004-04-05-17-38-30 - PPMAG4, IRIG:1/0/2
 UTC: 17:38:30.48 to 19:00:59.93, Dur: 4949s
 TimeLngth: 4949.55s, TimeInt: 28ms (35.4pps)
 TimeCor=-13.0s, PPS(min,max,med): 35,36,35
 Timeint/DSPdiff(mn,min,mx):28,28,34/28,28,34
 Prof: 399 to 175860, NumProf(r/t): 17571/175461
 ProcTime/Recs: 18:11:33-18:19:48/70284-87854
 ADacqtime: 25ms; DRate: 198.4KB/s; Flags: 0, 0, 0
 Pulse: 275ns, IFilt: 5.0MHz; ppPol: HH HV VV
 TxPol: HHV, PRF: 20 10 20 10 kHz, NoiseFlg:4,2
 Range: Delay 75m, Spacing 15m, Gates 100
 Ave. Pulses: 84, Rng/Prof Aspect@90m/s: 5.9

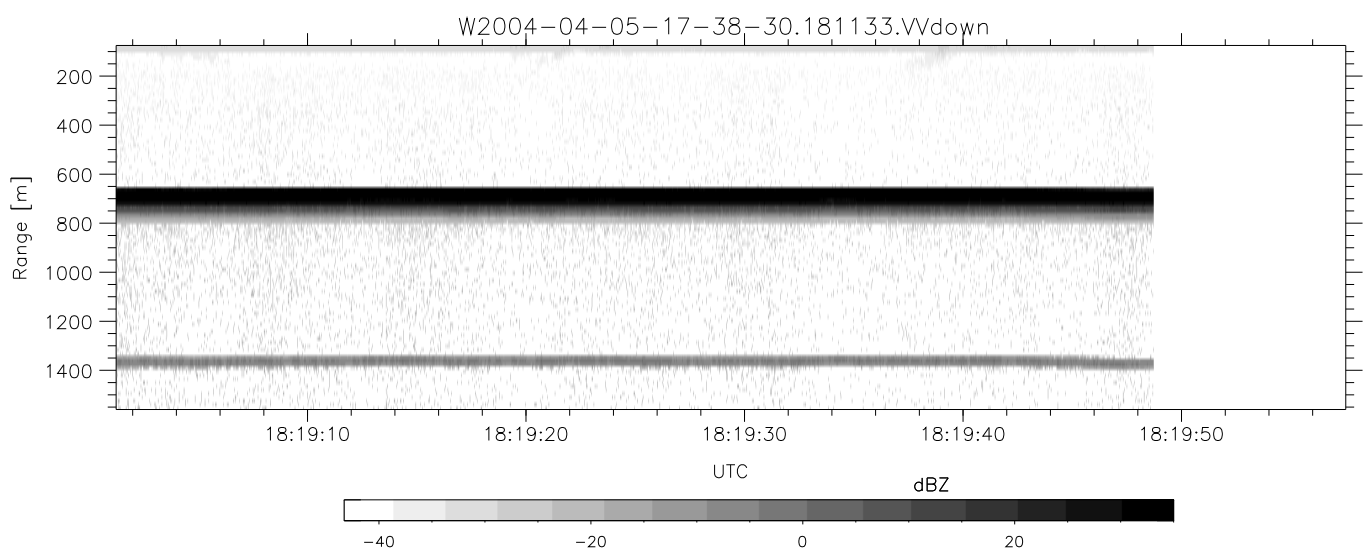
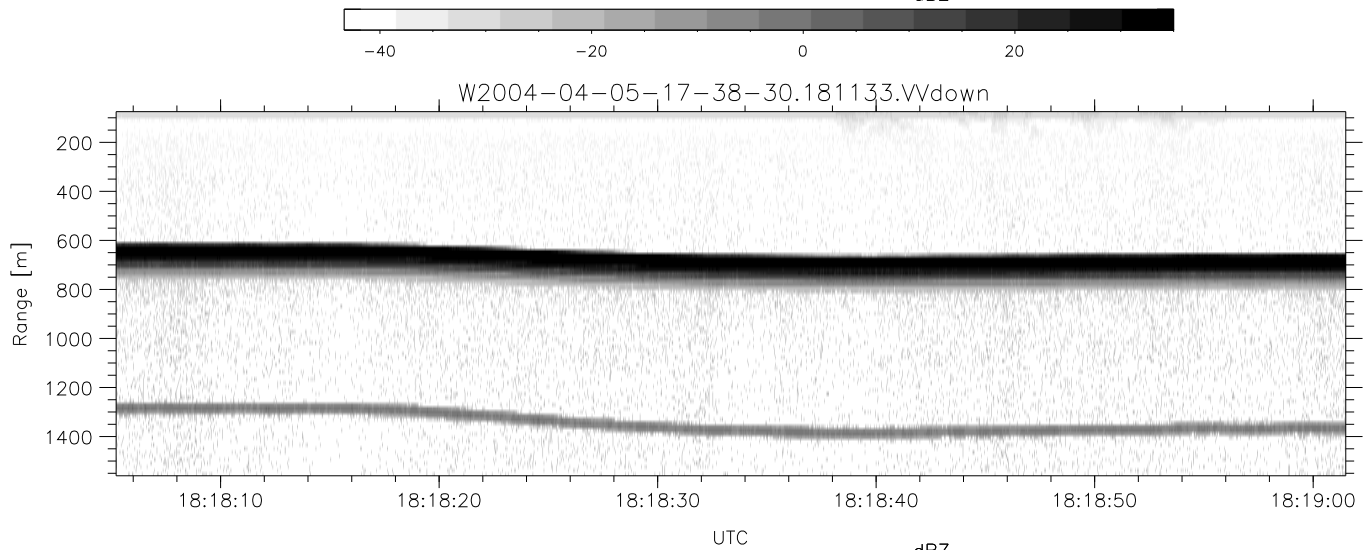
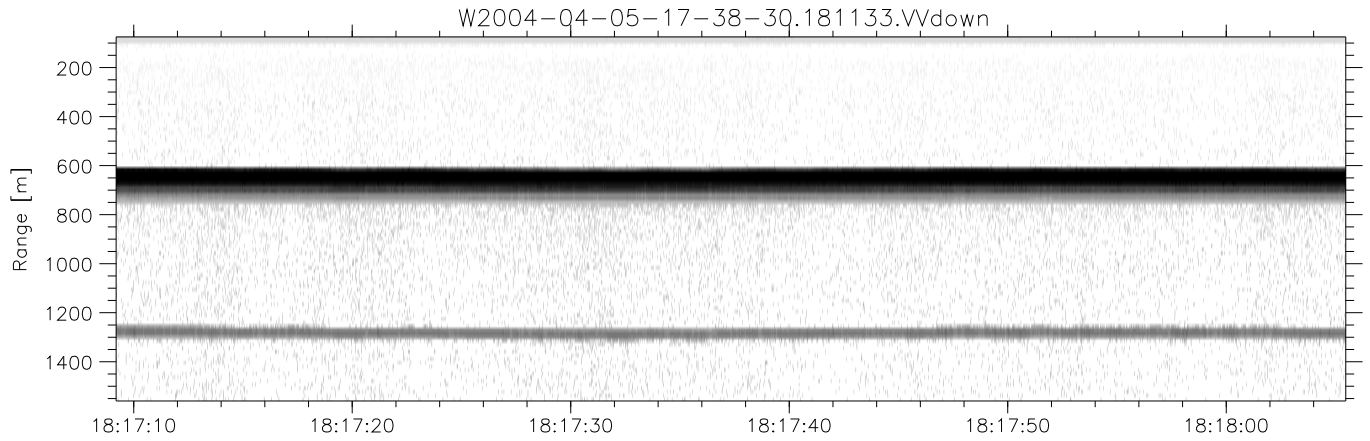
	Min	Max	Mean	Std	Varc%
hhN (dB)	-67.42	-63.89	-65.49	-75.57	9.8
vvN (dB)	-67.29	-64.09	-65.50	-75.55	9.9
hhL (dB)	-13.51	-2.55	-4.74	-10.48	26.7
vvL (dB)	-0.95	6.00	5.27	-3.03	14.8
ppN (m/s)	-12.30	12.27	-0.03	4.11	
ppT (m/s)	-97.18	96.96	-0.23	32.47	
hh/vv (dB)	NaN	44.83	16.03	30.15	2582
vh/hh (dB)	-99	-99	-99	-99	-99
hv/vv (dB)	NaN	-35.03	-55.30	-45.59	935.
hnjmp (dB)			0.16		
vnjmp (dB)			0.18		



CIFEX 2004 Data (cal/250ns+2.5/100ns-3.5/500ns: 53.0,50.0)

W2004-04-05-17-38-30 - PPMAG4, IRIG:1/0/2
 UTC: 17:38:30.48 to 19:00:59.93, Dur: 4949s
 TimeLngth: 4949.55s, TimeInt: 28ms (35.4pps)
 TimeCor=-13.0s, PPS(min,max,med): 35,36,35
 Timeint/DSPdiff(mn,min,mx):28,28,34/28,28,34
 Prof: 399 to 175860, NumProf(r/t): 17571/175461
 ProcTime/Recs: 18:11:33-18:19:48/70284-87854
 ADacqtime: 25ms; DRate: 198.4KB/s; Flags: 0, 0, 0
 Pulse: 275ns, IFfilt: 5.0MHz; ppPol: HH HV VV
 TxPol: HHVV, PRF: 20 10 20 10 kHz, NoiseFlg:4,2
 Range: Delay 75m, Spacing 15m, Gates 100
 Ave. Pulses: 84, Rng/Prof Aspect@90m/s: 5.9

	Min	Max	Mean	Std	Varc%
hhN (dB)	-67.42	-63.89	-65.49	-75.57	9.8
vvN (dB)	-67.29	-64.09	-65.50	-75.55	9.9
hhL (dB)	-13.51	-2.55	-4.74	-10.48	26.7
vvL (dB)	-0.95	6.00	5.27	-3.03	14.8
ppN (m/s)	-12.30	12.27	-0.03	4.11	
ppT (m/s)	-97.18	96.96	-0.23	32.47	
hh/vv (dB)	NaN	44.83	16.03	30.15	2582
vh/hh (dB)	-99	-99	-99	-99	-99
hv/vv (dB)	NaN	-35.03	-55.30	-45.59	935.
hnjmp (dB)			0.16		
vnjmp (dB)			0.18		



CIFEX 2004 Data (cal/250ns+2.5/100ns-3.5/500ns: 53.0,50.0)

W2004-04-05-17-38-30 - PPMAG4, IRIG:1/0/2
 UTC: 17:38:30.48 to 19:00:59.93, Dur: 4949s
 TimeLngth: 4949.55s, TimeInt: 28ms (35.4pps)
 TimeCor=-13.0s, PPS(min,max,med): 35,36,35
 Timeint/DSPdiff(mn,min,mx):28,28,34/28,28,34
 Prof: 399 to 175860, NumProf(r/t): 17571/175461
 ProcTime/Recs: 18:11:33-18:19:48/70284-87854
 ADacqtime: 25ms; DRate: 198.4KB/s; Flags: 0, 0, 0
 Pulse: 275ns, IFfilt: 5.0MHz; ppPol: HH HV VV
 TxPol: HHVV, PRF: 20 10 20 10 kHz, Noiseflg:4,2
 Range: Delay 75m, Spacing 15m, Gates 100
 Ave. Pulses: 84, Rng/Prof Aspect@90m/s: 5.9

	Min	Max	Mean	Std	Varc%
hhN (dB)	-67.42	-63.89	-65.49	-75.57	9.8
vvN (dB)	-67.29	-64.09	-65.50	-75.55	9.9
hhL (dB)	-13.51	-2.55	-4.74	-10.48	26.7
vvL (dB)	-0.95	6.00	5.27	-3.03	14.8
ppN (m/s)	-12.30	12.27	-0.03	4.11	
ppT (m/s)	-97.18	96.96	-0.23	32.47	
hh/vv (dB)	NaN	44.83	16.03	30.15	2582
vh/hh (dB)	-99	-99	-99	-99	-99
hv/vv (dB)	NaN	-35.03	-55.30	-45.59	935.
hnjmp (dB)			0.16		
vnjmp (dB)			0.18		