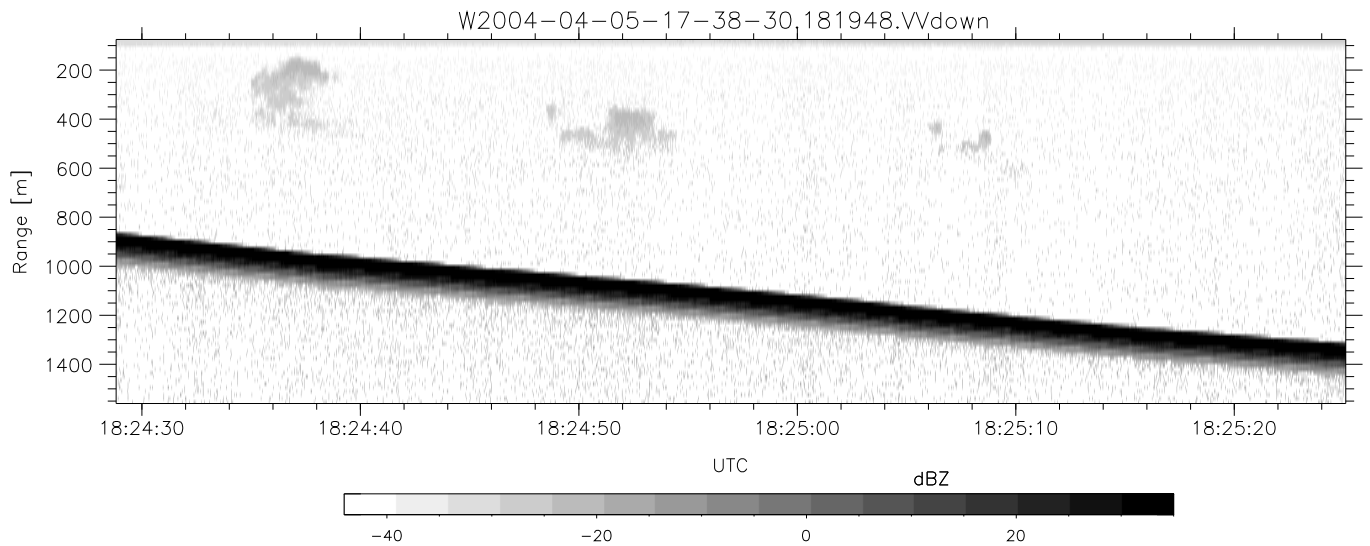
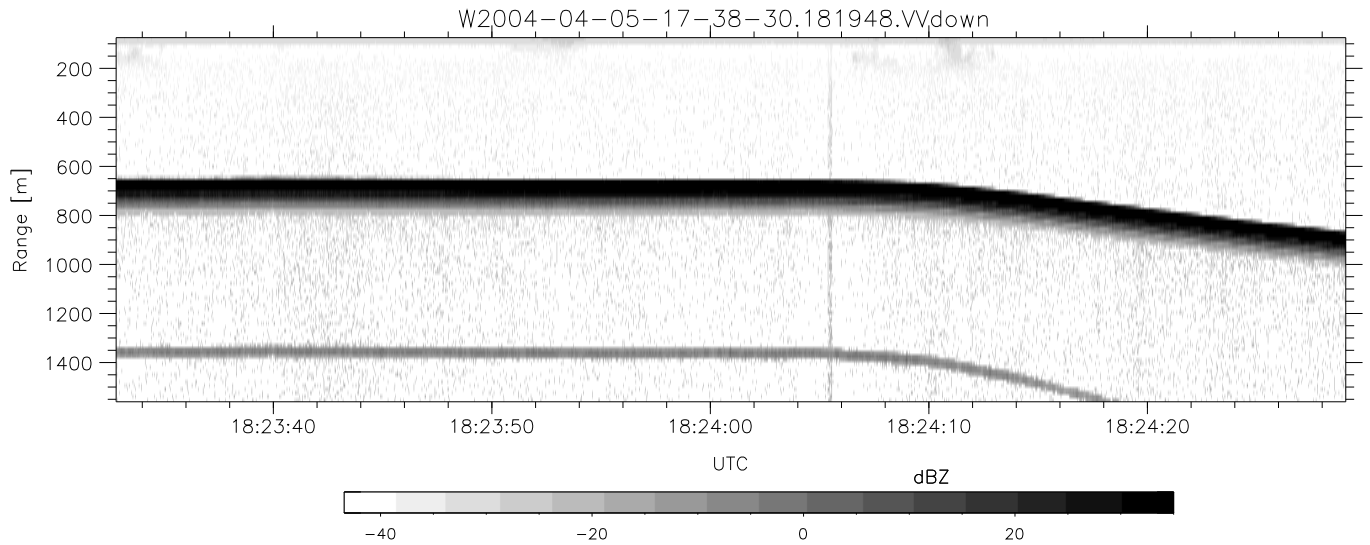
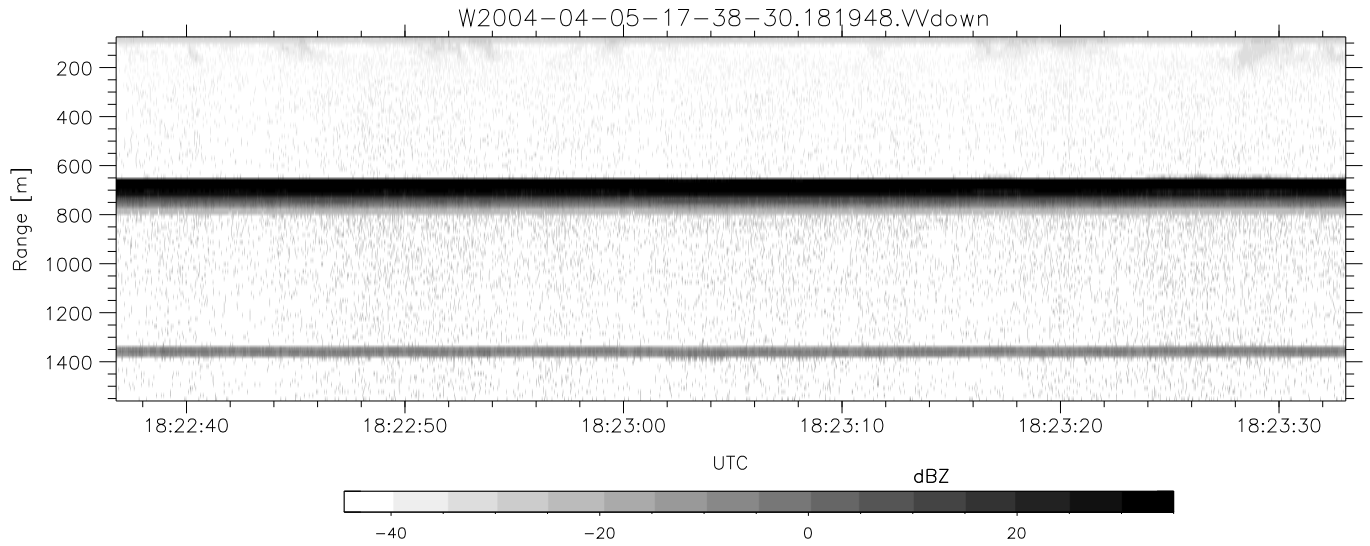


CIFEX 2004 Data (cal/250ns+2.5/100ns-3.5/500ns: 53.0,50.0)

W2004-04-05-17-38-30 - PPMAG4, IRIG:1/0/2
 UTC: 17:38:30.48 to 19:00:59.93, Dur: 4949s
 TimeLngth: 4949.55s, TimeInt: 28ms (35.4pps)
 TimeCor=-13.0s, PPS(min,max,med): 35,36,35
 Timeint/DSPdiff(mn,min,mx):28,28,28/28,28,28
 Prof: 399 to 175860, NumProf(r/t): 17571/175461
 ProcTime/Recs: 18:19:48-18:28:04/87855-105425
 ADacqtime: 25ms; DRate: 198.4KB/s; Flags: 0, 0, 0
 Pulse: 275ns, IFfilt: 5.0MHz; ppPol: HH HV VV
 TxPol: HHVV, PRF: 20 10 20 10 kHz, Noiseflg:2,1
 Range: Delay 75m, Spacing 15m, Gates 100
 Ave. Pulses: 84, Rng/Prof Aspect@90m/s: 5.9

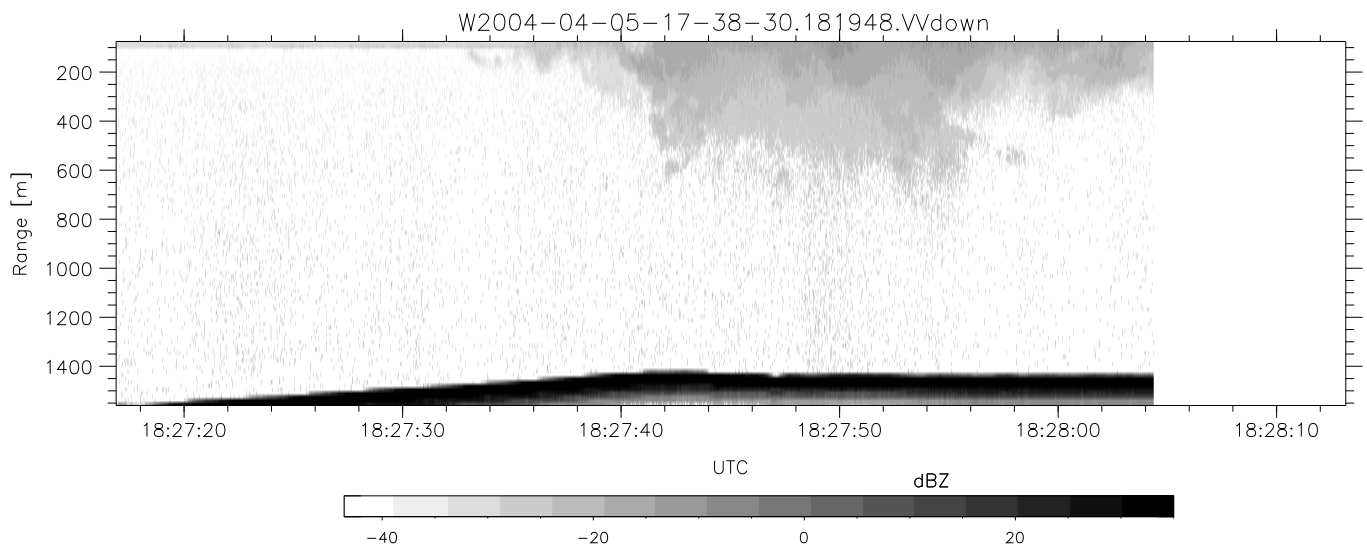
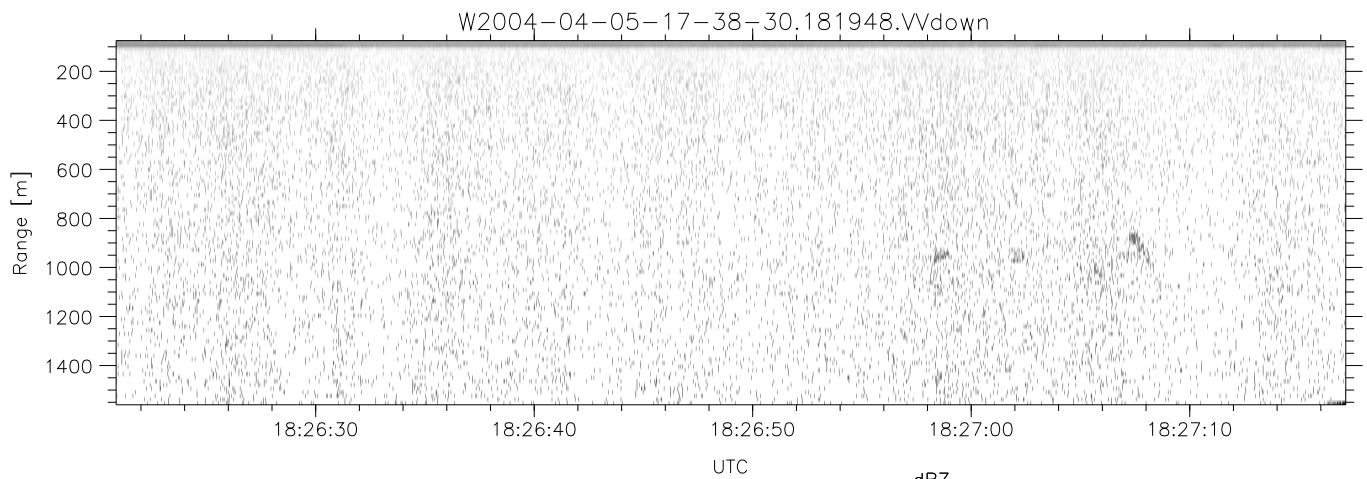
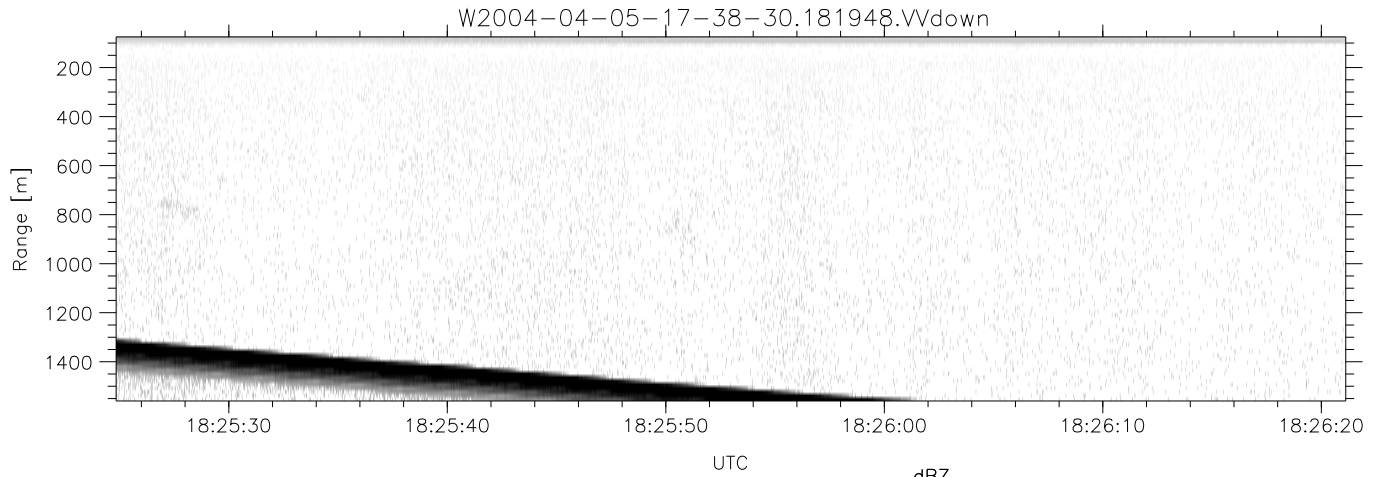
	Min	Max	Mean	Std	Varc%
hhN(dB)	-67.19	-63.88	-65.54	-75.57	9.9
vvN(dB)	-67.34	-63.79	-65.54	-75.58	9.9
hhL(dB)	-22.28	0.65	-3.36	-6.60	47.4
vvL(dB)	-1.48	6.00	4.41	-0.89	29.5
ppN(m/s)	-12.31	12.54	0.05	4.15	
ppT(m/s)	-97.23	99.08	0.41	32.80	
hh/vv(dB)	NaN	38.52	11.08	23.92	1921
vh/hh(dB)	-99	-99	-99	-99	-99
hv/vv(dB)	NaN	-34.24	-56.98	-45.95	1269
hnjmp(dB)			-0.16		
vnjmp(dB)			-0.16		



CIFEX 2004 Data (cal/250ns+2.5/100ns-3.5/500ns: 53.0,50.0)

W2004-04-05-17-38-30 - PPMAG4, IRIG:1/0/2
 UTC: 17:38:30.48 to 19:00:59.93, Dur: 4949s
 TimeLngth: 4949.55s, TimeInt: 28ms (35.4pps)
 TimeCor=-13.0s, PPS(min,max,med): 35,36,35
 Timeint/DSPdiff(mn,min,mx):28,28,28/28,28,28
 Prof: 399 to 175860, NumProf(r/t): 17571/175461
 ProcTime/Recs: 18:19:48-18:28:04/87855-105425
 ADacqtime: 25ms; DRate: 198.4KB/s; Flags: 0, 0, 0
 Pulse: 275ns, IFfilt: 5.0MHz; ppPol: HH HV VV
 TxPol: HHVV, PRF: 20 10 20 10 kHz, Noiseflg:2,1
 Range: Delay 75m, Spacing 15m, Gates 100
 Ave. Pulses: 84, Rng/Prof Aspect@90m/s: 5.9

	Min	Max	Mean	Std	Varc%
hhN (dB)	-67.19	-63.88	-65.54	-75.57	9.9
vvN (dB)	-67.34	-63.79	-65.54	-75.58	9.9
hhL (dB)	-22.28	0.65	-3.36	-6.60	47.4
vvL (dB)	-1.48	6.00	4.41	-0.89	29.5
ppN (m/s)	-12.31	12.54	0.05	4.15	
ppT (m/s)	-97.23	99.08	0.41	32.80	
hh/vv (dB)	NaN	38.52	11.08	23.92	1921
vh/hh (dB)	-99	-99	-99	-99	-99
hv/vv (dB)	NaN	-34.24	-56.98	-45.95	1269
hnjmp (dB)			-0.16		
vnjmp (dB)			-0.16		



CIFEX 2004 Data (cal/250ns+2.5/100ns-3.5/500ns: 53.0,50.0)

W2004-04-05-17-38-30 - PPMAG4, IRIG:1/0/2
 UTC: 17:38:30.48 to 19:00:59.93, Dur: 4949s
 TimeLngth: 4949.55s, TimeInt: 28ms (35.4pps)
 TimeCor=-13.0s, PPS(min,max,med): 35,36,35
 Timeint/DSPdiff(mn,min,mx):28,28,28/28,28,28
 Prof: 399 to 175860, NumProf(r/t): 17571/175461
 ProcTime/Recs: 18:19:48-18:28:04/87855-105425
 ADacqtime: 25ms; DRate: 198.4KB/s; Flags: 0, 0, 0
 Pulse: 275ns, IFfilt: 5.0MHz; ppPol: HH HV VV
 TxPol: HHVV, PRF: 20 10 20 10 kHz, Noiseflg:2,1
 Range: Delay 75m, Spacing 15m, Gates 100
 Ave. Pulses: 84, Rng/Prof Aspect@90m/s: 5.9

	Min	Max	Mean	Std	Varc%
hhN (dB)	-67.19	-63.88	-65.54	-75.57	9.9
vvN (dB)	-67.34	-63.79	-65.54	-75.58	9.9
hhL (dB)	-22.28	0.65	-3.36	-6.60	47.4
vvL (dB)	-1.48	6.00	4.41	-0.89	29.5
ppN (m/s)	-12.31	12.54	0.05	4.15	
ppT (m/s)	-97.23	99.08	0.41	32.80	
hh/vv (dB)	NaN	38.52	11.08	23.92	1921
vh/hh (dB)	-99	-99	-99	-99	-99
hv/vv (dB)	NaN	-34.24	-56.98	-45.95	1269
hnjmp (dB)			-0.16		
vnjmp (dB)			-0.16		