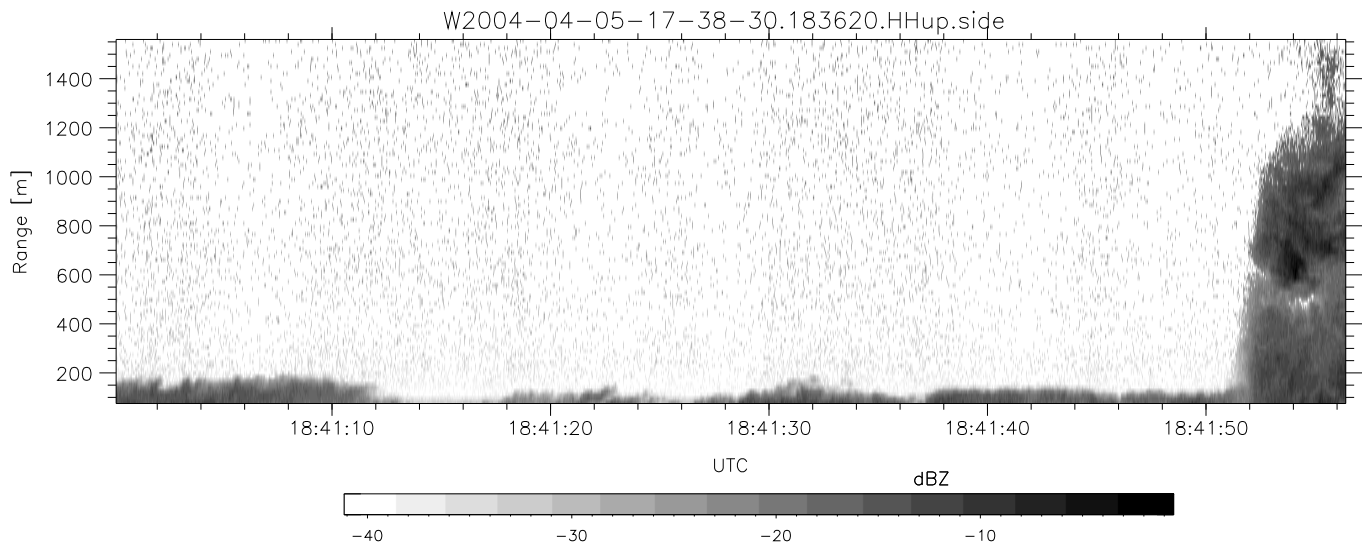
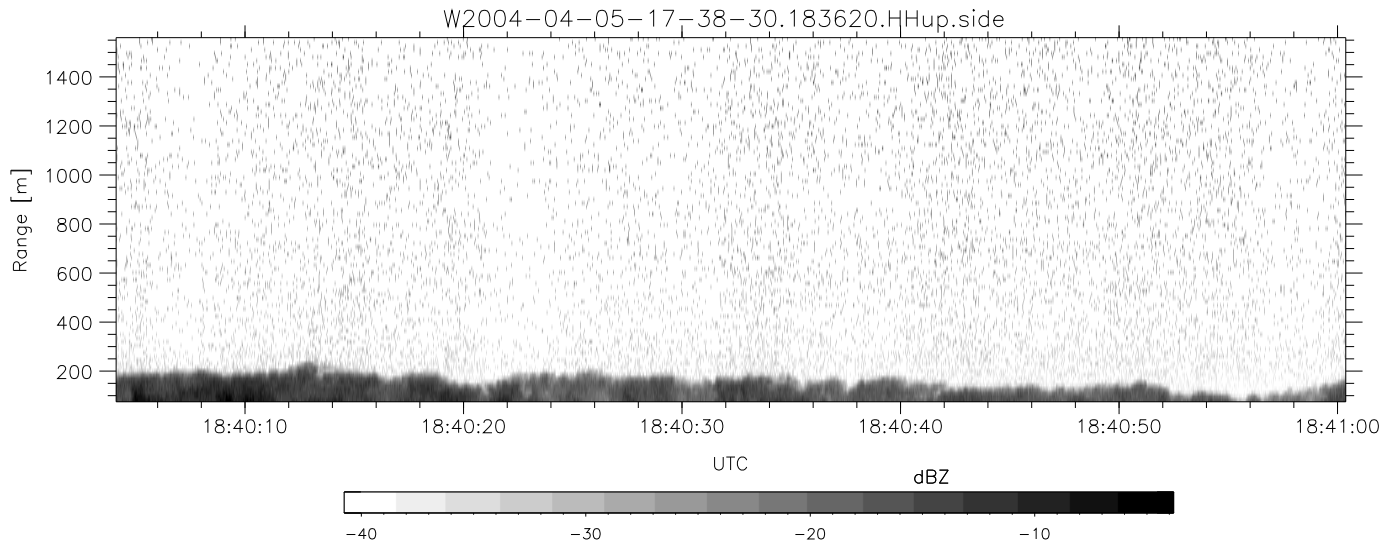
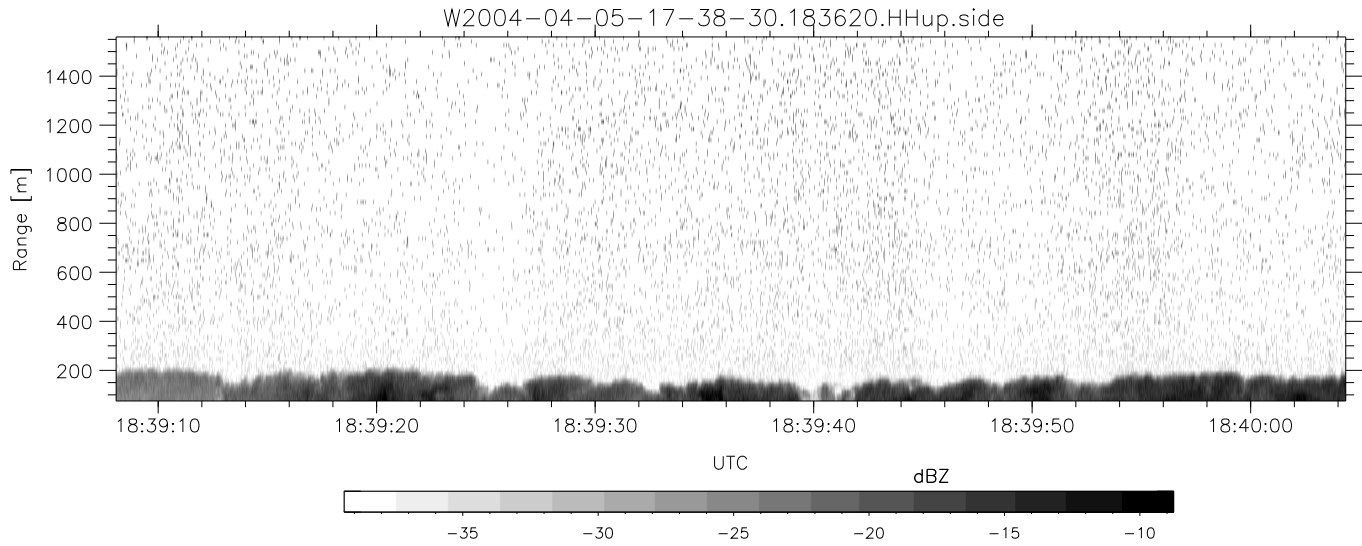


CIFEX 2004 Data (cal/250ns+2.5/100ns-3.5/500ns: 53.0,50.0)

W2004-04-05-17-38-30 - PPMAG4, IRIG:1/0/2
 UTC: 17:38:30.48 to 19:00:59.93, Dur: 4949s
 TimeLngth: 4949.55s, TimeInt: 28ms (35.4pps)
 TimeCor=-13.0s, PPS(min,max,med): 35,36,35
 Timeint/DSPdiff(mn,min,mx):28,28,28/28,28,28
 Prof: 399 to 175860, NumProf(r/t): 17571/175461
 ProcTime/Recs: 18:36:20-18:44:35/122997-140567
 ADacqtime: 25ms; DRate: 198.4KB/s; Flags: 0, 0, 0
 Pulse: 275ns, IFilt: 5.0MHz; ppPol: HH HV VV
 TxPol: HHVV, PRF: 20 10 20 10 kHz, NoiseFlg:4,2
 Range: Delay 75m, Spacing 15m, Gates 100
 Ave. Pulses: 84, Rng/Prof Aspect@90m/s: 5.9

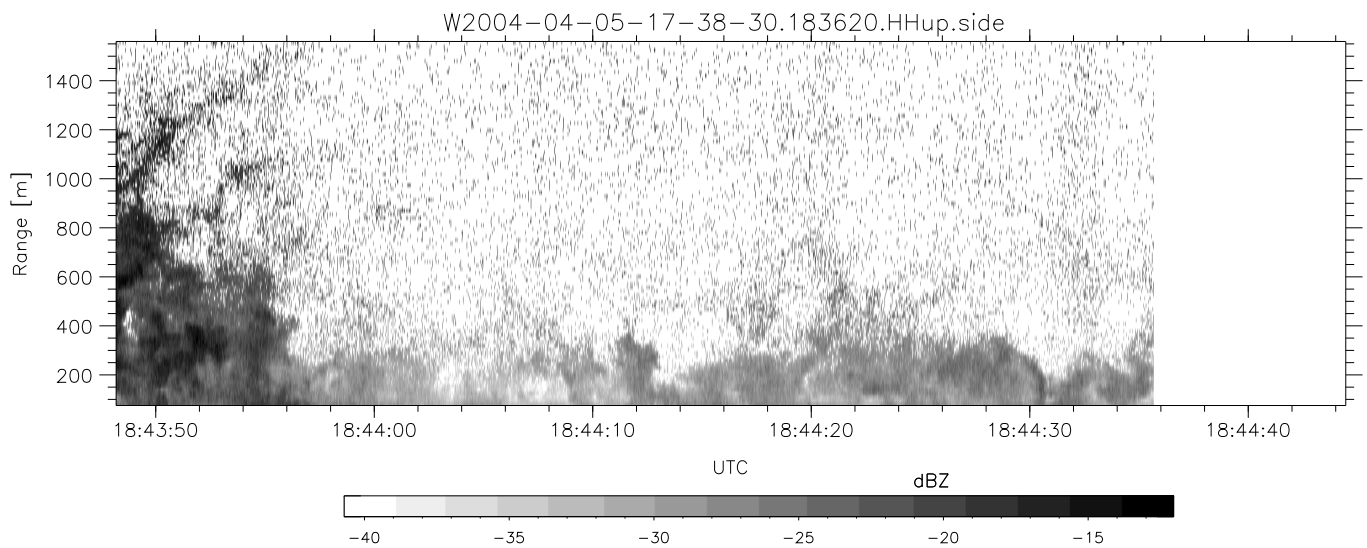
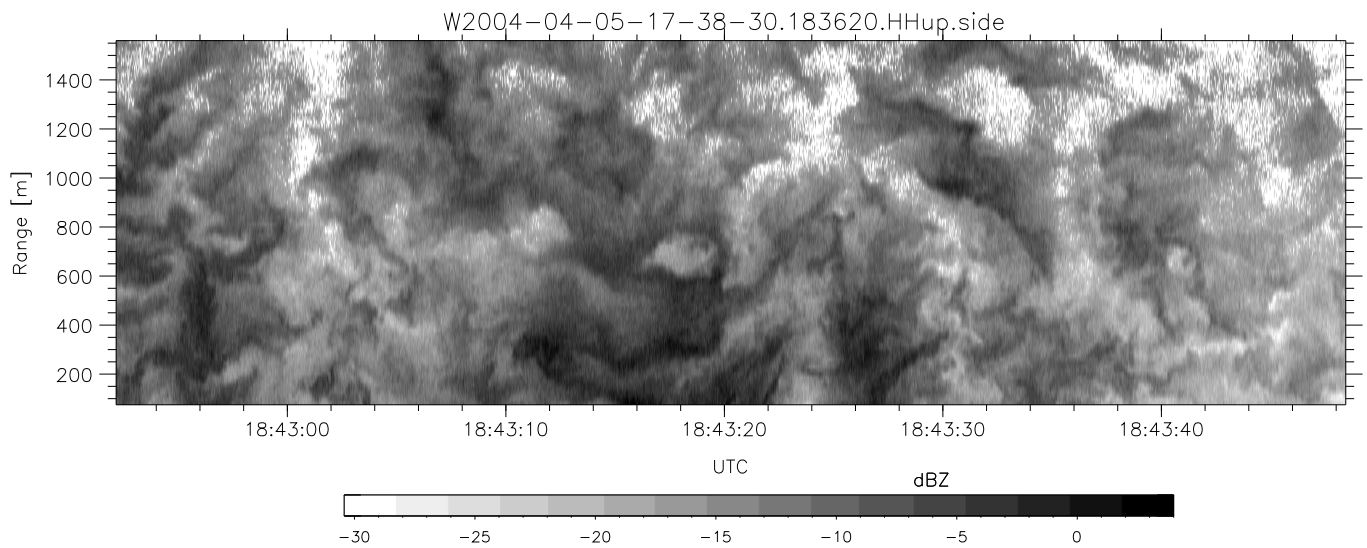
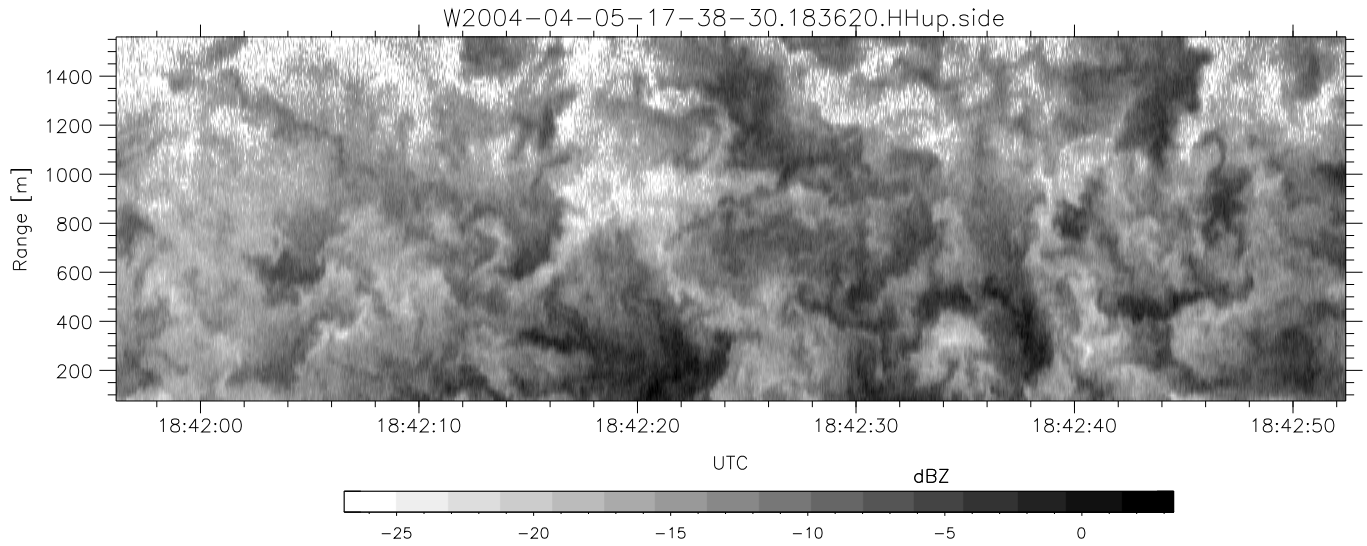
	Min	Max	Mean	Std	Varc%
hhN (dB)	-67.33	-64.04	-65.55	-75.57	9.9
vvN (dB)	-67.63	-63.84	-65.59	-75.61	9.9
hhL (dB)	-11.76	-4.10	-7.95	-14.34	22.9
vvL (dB)	1.71	6.00	5.98	-10.20	2.4
ppN (m/s)	-12.54	12.66	-0.03	4.16	
ppT (m/s)	-99.10	99.99	-0.23	32.87	
hh/vv (dB)	NaN	54.46	10.47	30.32	9669
vh/hh (dB)	NaN	-27.41	-33.69	-35.11	72.1
hv/vv (dB)	NaN	-33.70	-50.20	-44.11	406.
hnjmp (dB)			-0.17		
vnjmp (dB)			-0.17		



CIFEX 2004 Data (cal/250ns+2.5/100ns-3.5/500ns: 53.0,50.0)

W2004-04-05-17-38-30 - PPMAG4, IRIG:1/0/2
 UTC: 17:38:30.48 to 19:00:59.93, Dur: 4949s
 TimeLngth: 4949.55s, TimeInt: 28ms (35.4pps)
 TimeCor=-13.0s, PPS(min,max,med): 35,36,35
 Timeint/DSPdiff(mn,min,mx):28,28,28/28,28,28
 Prof: 399 to 175860, NumProf(r/t): 17571/175461
 ProcTime/Recs: 18:36:20-18:44:35/122997-140567
 ADacqtime: 25ms; DRate: 198.4KB/s; Flags: 0, 0, 0
 Pulse: 275ns, IFilt: 5.0MHz; ppPol: HH HV VV
 TxPol: HHVV, PRF: 20 10 20 10 kHz, NoiseFlg:4,2
 Range: Delay 75m, Spacing 15m, Gates 100
 Ave. Pulses: 84, Rng/Prof Aspect@90m/s: 5.9

	Min	Max	Mean	Std	Varc%
hhN (dB)	-67.33	-64.04	-65.55	-75.57	9.9
vvN (dB)	-67.63	-63.84	-65.59	-75.61	9.9
hhL (dB)	-11.76	-4.10	-7.95	-14.34	22.9
vvL (dB)	1.71	6.00	5.98	-10.20	2.4
ppN (m/s)	-12.54	12.66	-0.03	4.16	
ppT (m/s)	-99.10	99.99	-0.23	32.87	
hh/vv (dB)	NaN	54.46	10.47	30.32	9669
vh/hh (dB)	NaN	-27.41	-33.69	-35.11	72.1
hv/vv (dB)	NaN	-33.70	-50.20	-44.11	406.
hnjmp (dB)			-0.17		
vnjmp (dB)			-0.17		



CIFEX 2004 Data (cal/250ns+2.5/100ns-3.5/500ns: 53.0,50.0)

W2004-04-05-17-38-30 - PPMAG4, IRIG:1/0/2
 UTC: 17:38:30.48 to 19:00:59.93, Dur: 4949s
 TimeLngth: 4949.55s, TimeInt: 28ms (35.4pps)
 TimeCor=-13.0s, PPS(min,max,med): 35,36,35
 Timeint/DSPdiff(mn,min,mx):28,28,28/28,28,28
 Prof: 399 to 175860, NumProf(r/t): 17571/175461
 ProcTime/Recs: 18:36:20-18:44:35/122997-140567
 ADacqtime: 25ms; DRate: 198.4KB/s; Flags: 0, 0, 0
 Pulse: 275ns, IFfilt: 5.0MHz; ppPol: HH HV VV
 TxPol: HHVV, PRF: 20 10 20 10 kHz, Noiseflg:4,2
 Range: Delay 75m, Spacing 15m, Gates 100
 Ave. Pulses: 84, Rng/Prof Aspect@90m/s: 5.9

	Min	Max	Mean	Std	Varc%
hhN(dB)	-67.33	-64.04	-65.55	-75.57	9.9
vvN(dB)	-67.63	-63.84	-65.59	-75.61	9.9
hhL(dB)	-11.76	-4.10	-7.95	-14.34	22.9
vvL(dB)	1.71	6.00	5.98	-10.20	2.4
ppN(m/s)	-12.54	12.66	-0.03	4.16	
ppT(m/s)	-99.10	99.99	-0.23	32.87	
hh/vv(dB)	NaN	54.46	10.47	30.32	9669
vh/hh(dB)	NaN	-27.41	-33.69	-35.11	72.1
hv/vv(dB)	NaN	-33.70	-50.20	-44.11	406.
hnjmp(dB)			-0.17		
vnjmp(dB)			-0.17		