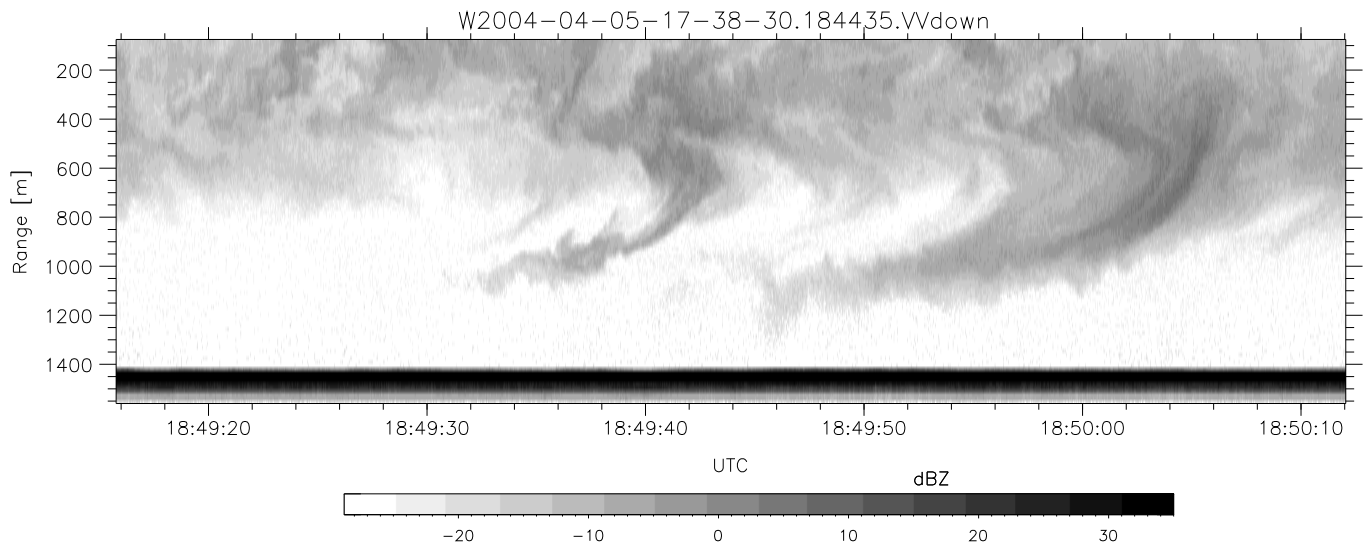
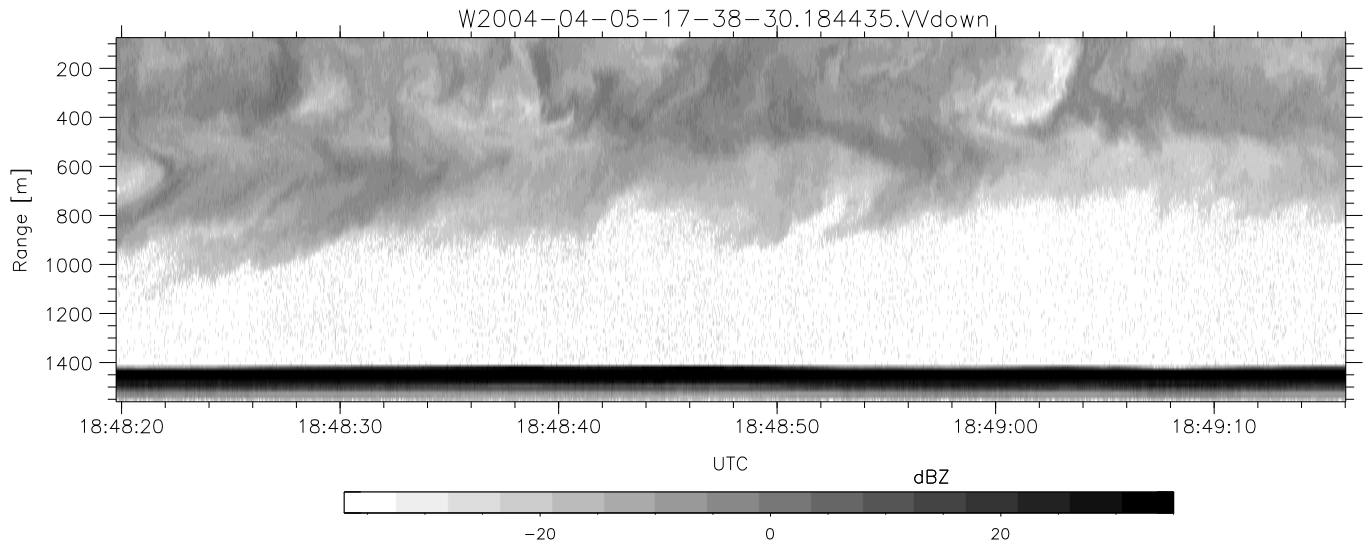
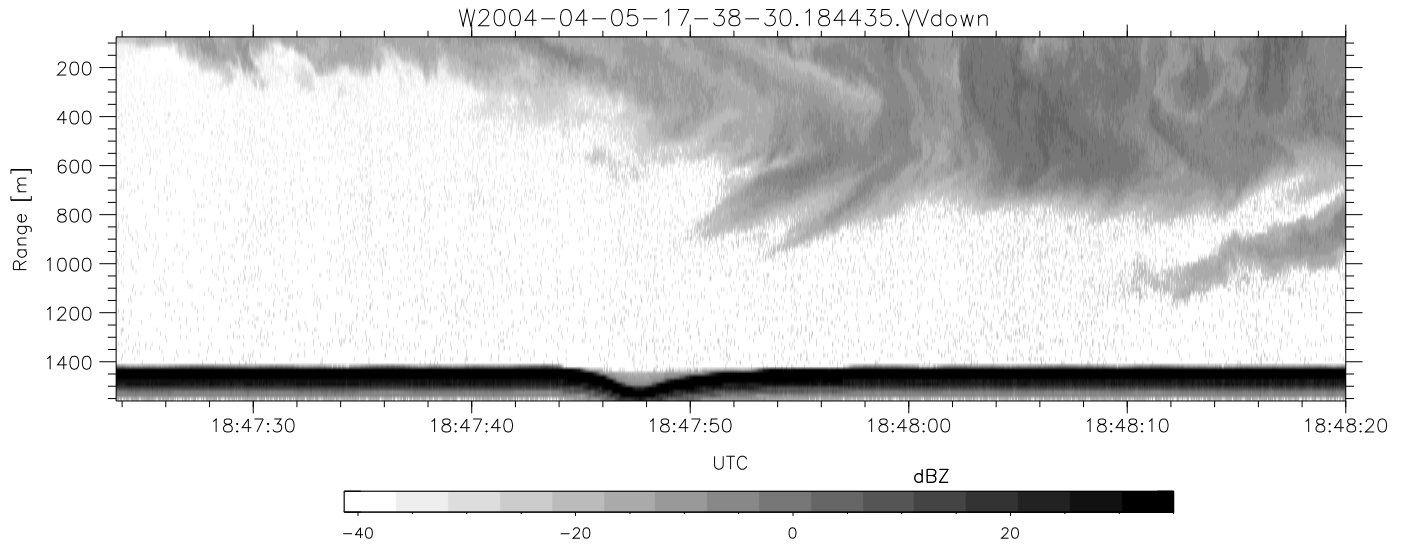


CIFEX 2004 Data (cal/250ns+2.5/100ns-3.5/500ns: 53.0,50.0)

W2004-04-05-17-38-30 - PPMAG4, IRIG:1/0/2
 UTC: 17:38:30.48 to 19:00:59.93, Dur: 4949s
 TimeLngth: 4949.55s, TimeInt: 28ms (35.4pps)
 TimeCor=-13.0s, PPS(min,max,med): 35,36,35
 Timeint/DSPdiff(mn,min,mx):28,28,28/28,28,28
 Prof: 399 to 175860, NumProf(r/t): 17571/175461
 ProcTime/Recs: 18:44:35-18:52:51/140568-158138
 ADacqtime: 25ms; DRate: 198.4KB/s; Flags: 0, 0, 0
 Pulse: 275ns, IFilt: 5.0MHz; ppPol: HH HV VV
 TxPol: HHVV, PRF: 20 10 20 10 kHz, NoiseFlg:4,1
 Range: Delay 75m, Spacing 15m, Gates 100
 Ave. Pulses: 84, Rng/Prof Aspect@90m/s: 5.9

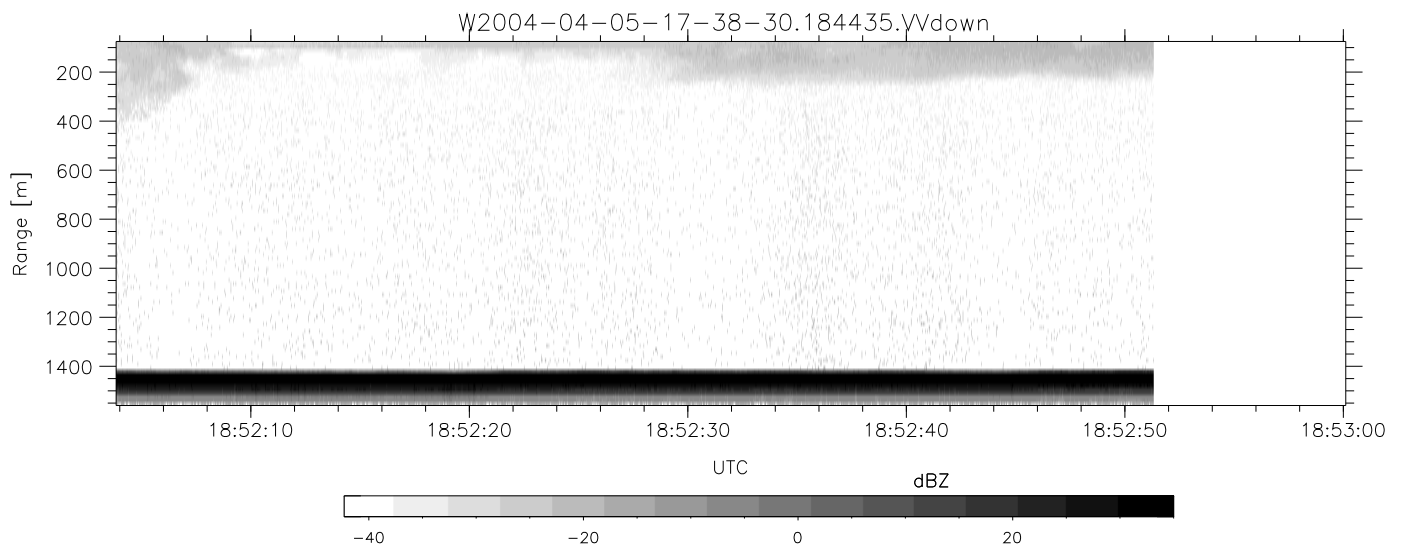
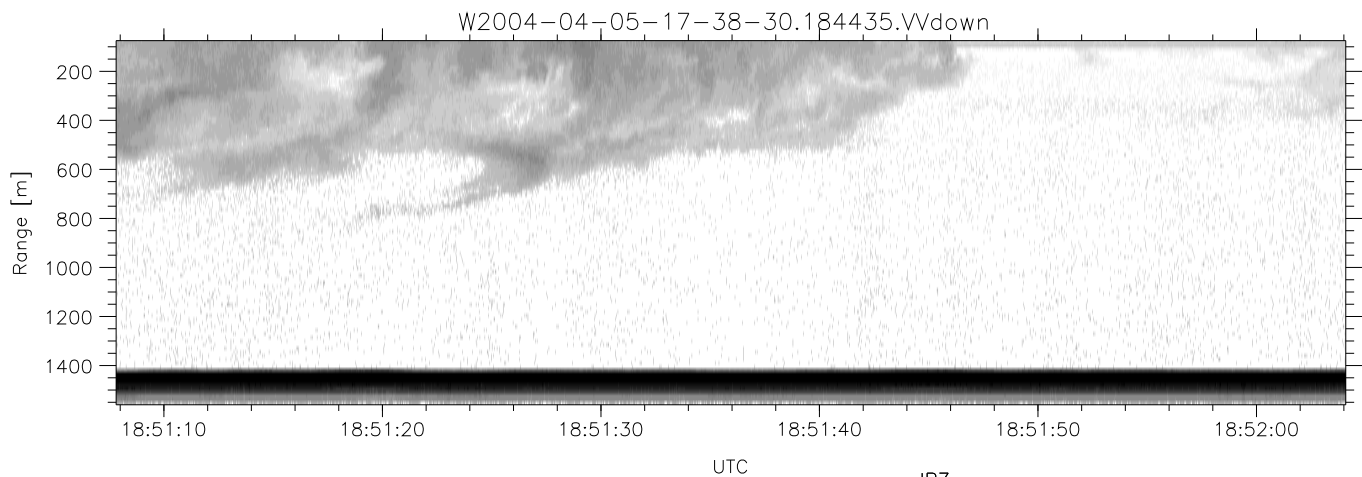
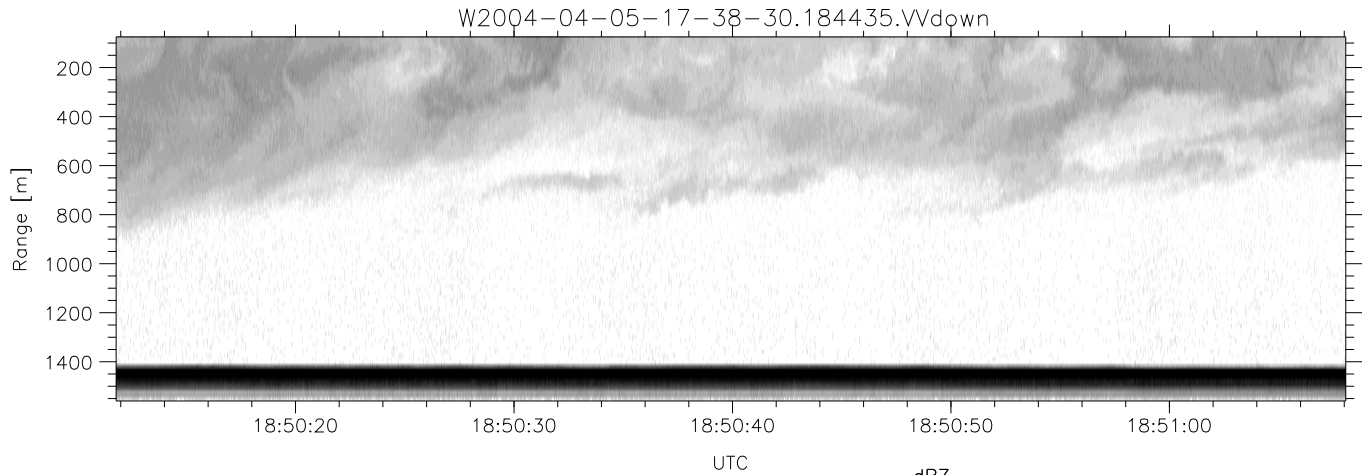
	Min	Max	Mean	Std	Varc%
hhN (dB)	-67.38	-64.02	-65.50	-75.54	9.9
vvN (dB)	-67.58	-63.96	-65.59	-75.58	10.0
hhL (dB)	-13.25	-4.37	-8.37	-14.83	22.6
vvL (dB)	3.47	6.00	5.99	-13.11	1.2
ppN (m/s)	-12.46	12.53	-0.08	4.14	
ppT (m/s)	-98.40	99.00	-0.61	32.73	
hh/vv (dB)	NaN	58.51	NaN	36.25	-338
vh/hh (dB)	NaN	-27.04	-33.44	-35.07	68.8
hv/vv (dB)	NaN	-33.32	-52.57	-45.17	549.
hnjmp (dB)			0.16		
vnjmp (dB)			0.15		



CIFEX 2004 Data (cal/250ns+2.5/100ns-3.5/500ns: 53.0,50.0)

W2004-04-05-17-38-30 - PPMAG4, IRIG:1/0/2
 UTC: 17:38:30.48 to 19:00:59.93, Dur: 4949s
 TimeLngth: 4949.55s, TimeInt: 28ms (35.4pps)
 TimeCor=-13.0s, PPS(min,max,med): 35,36,35
 Timeint/DSPdiff(mn,min,mx):28,28,28/28,28,28
 Prof: 399 to 175860, NumProf(r/t): 17571/175461
 ProcTime/Recs: 18:44:35-18:52:51/140568-158138
 ADacqtime: 25ms; DRate: 198.4KB/s; Flags: 0, 0, 0
 Pulse: 275ns, IFfilt: 5.0MHz; ppPol: HH HV VV
 TxPol: HHVV, PRF: 20 10 20 10 kHz, Noiseflg:4,1
 Range: Delay 75m, Spacing 15m, Gates 100
 Ave. Pulses: 84, Rng/Prof Aspect@90m/s: 5.9

	Min	Max	Mean	Std	Varc%
hhN (dB)	-67.38	-64.02	-65.50	-75.54	9.9
vvN (dB)	-67.58	-63.96	-65.59	-75.58	10.0
hhL (dB)	-13.25	-4.37	-8.37	-14.83	22.6
vvL (dB)	3.47	6.00	5.99	-13.11	1.2
ppN (m/s)	-12.46	12.53	-0.08	4.14	
ppT (m/s)	-98.40	99.00	-0.61	32.73	
hh/vv (dB)	NaN	58.51	NaN	36.25	-338
vh/hh (dB)	NaN	-27.04	-33.44	-35.07	68.8
hv/vv (dB)	NaN	-33.32	-52.57	-45.17	549.
hnjmp (dB)				0.16	
vnjmp (dB)				0.15	



CIFEX 2004 Data (cal/250ns+2.5/100ns-3.5/500ns: 53.0,50.0)

W2004-04-05-17-38-30 - PPMAG4, IRIG:1/0/2
 UTC: 17:38:30.48 to 19:00:59.93, Dur: 4949s
 TimeLngth: 4949.55s, TimeInt: 28ms (35.4pps)
 TimeCor=-13.0s, PPS(min,max,med): 35,36,35
 Timeint/DSPdiff(mn,min,mx):28,28,28/28,28,28
 Prof: 399 to 175860, NumProf(r/t): 17571/175461
 ProcTime/Recs: 18:44:35-18:52:51/140568-158138
 ADacqtime: 25ms; DRate: 198.4KB/s; Flags: 0, 0, 0
 Pulse: 275ns, IFilt: 5.0MHz; ppPol: HH HV VV
 TxPol: HHVV, PRF: 20 10 20 10 kHz, NoiseFlg:4,1
 Range: Delay 75m, Spacing 15m, Gates 100
 Ave. Pulses: 84, Rng/Prof Aspect@90m/s: 5.9

	Min	Max	Mean	Std	Varc%
hhN (dB)	-67.38	-64.02	-65.50	-75.54	9.9
vvN (dB)	-67.58	-63.96	-65.59	-75.58	10.0
hhL (dB)	-13.25	-4.37	-8.37	-14.83	22.6
vvL (dB)	3.47	6.00	5.99	-13.11	1.2
ppN (m/s)	-12.46	12.53	-0.08	4.14	
ppT (m/s)	-98.40	99.00	-0.61	32.73	
hh/vv (dB)	NaN	58.51	NaN	36.25	-338
vh/hh (dB)	NaN	-27.04	-33.44	-35.07	68.8
hv/vv (dB)	NaN	-33.32	-52.57	-45.17	549.
hn_jmp (dB)				0.16	
vn_jmp (dB)				0.15	