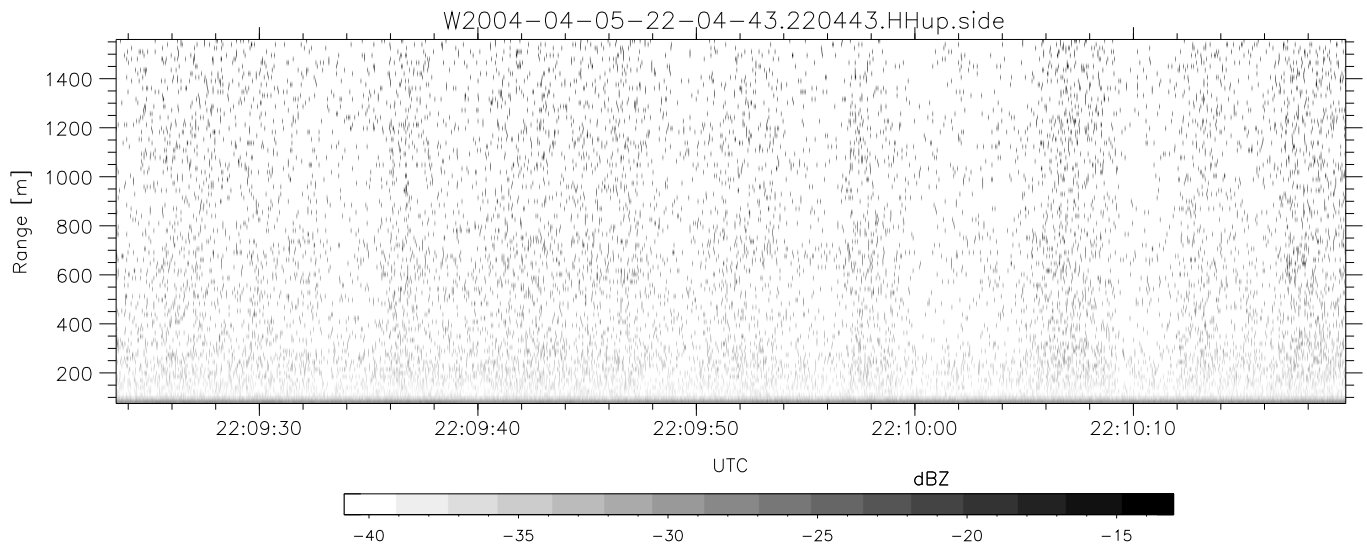
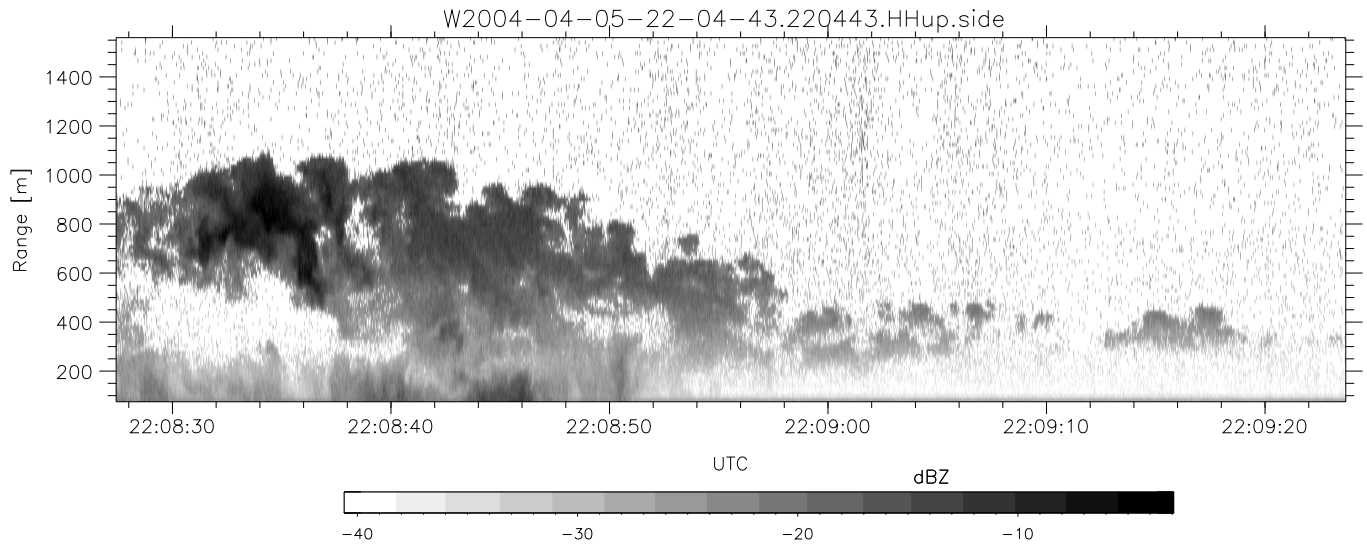
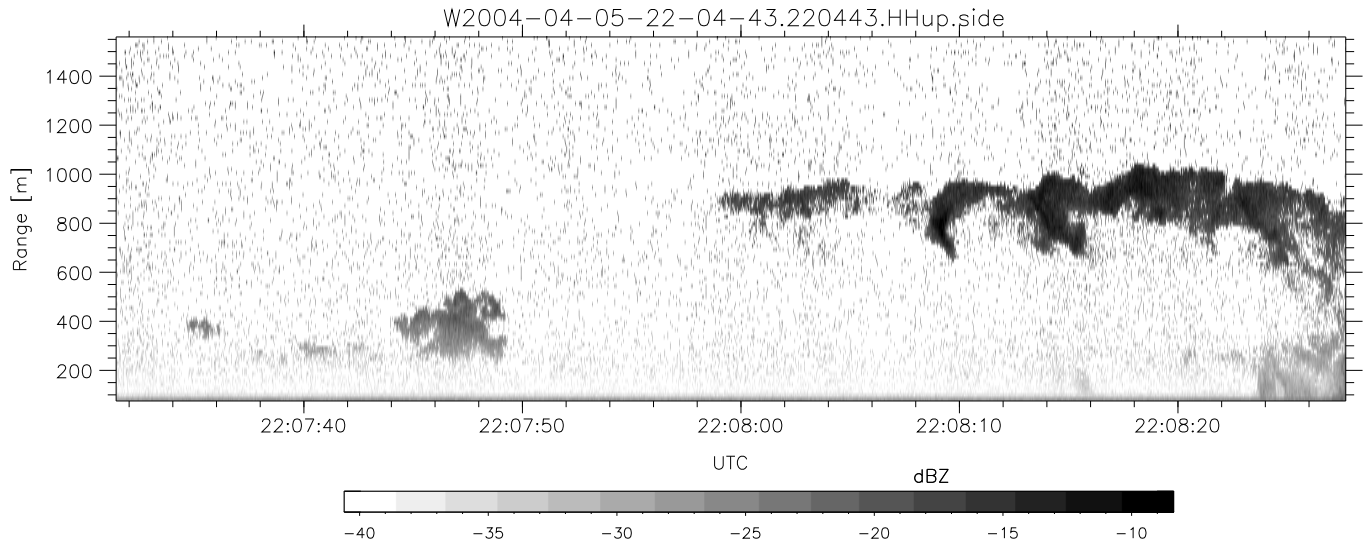


CIFEX 2004 Data (cal/250ns+2.5/100ns-3.5/500ns: 53.0,50.0)

W2004-04-05-22-04-43 - PPMAG4, IRIG:1/0/2
 UTC: 22:04:43.37 to 22:26:56.84, Dur: 1333s
 TimeLngth: 1333.48s, TimeInt: 28ms (35.5pps)
 TimeCor=-13.0s, PPS(min,max,med): 35,36,35
 Timeint/DSPdiff(mn,min,mx):28,28,28/28,28,28
 Prof: 302 to 47576, NumProf(r/t): 17571/47274
 ProcTime/Recs: 22:04:43-22:12:58/0-17570
 ADacqtime: 25ms; DRate: 198.4KB/s; Flags: 0, 0, 0
 Pulse: 275ns, IFilt: 5.0MHz; ppPol: HH HV VV
 TxPol: HHV, PRF: 20 10 20 10 kHz, NoiseFlg:2,3
 Range: Delay 75m, Spacing 15m, Gates 100
 Ave. Pulses: 84, Rng/Prof Aspect@90m/s: 5.9

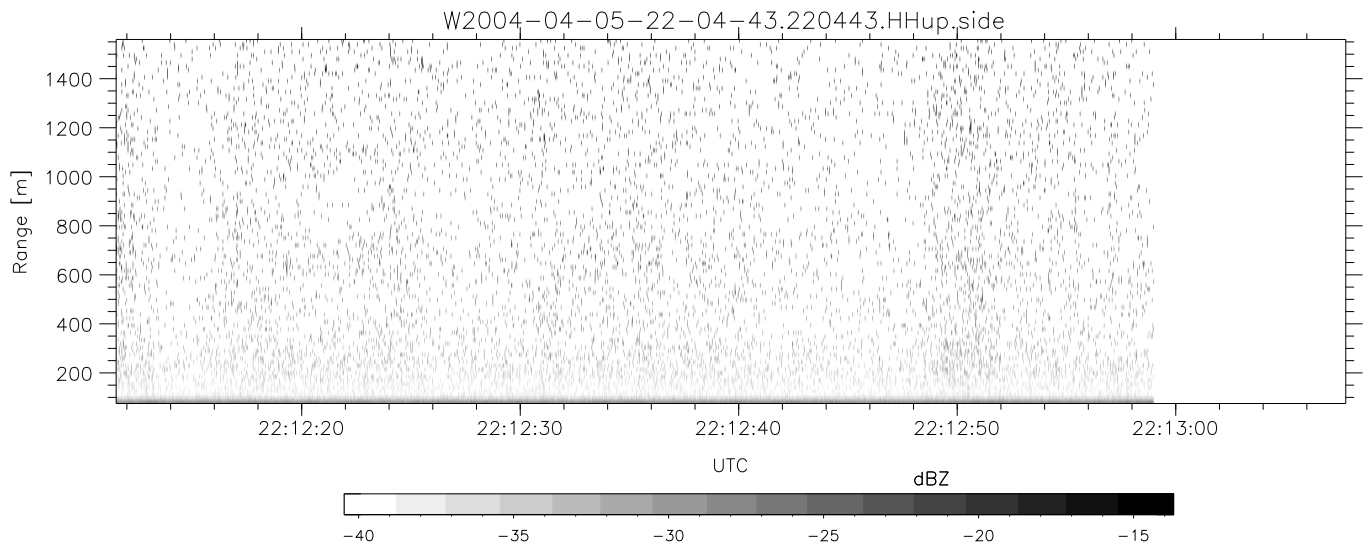
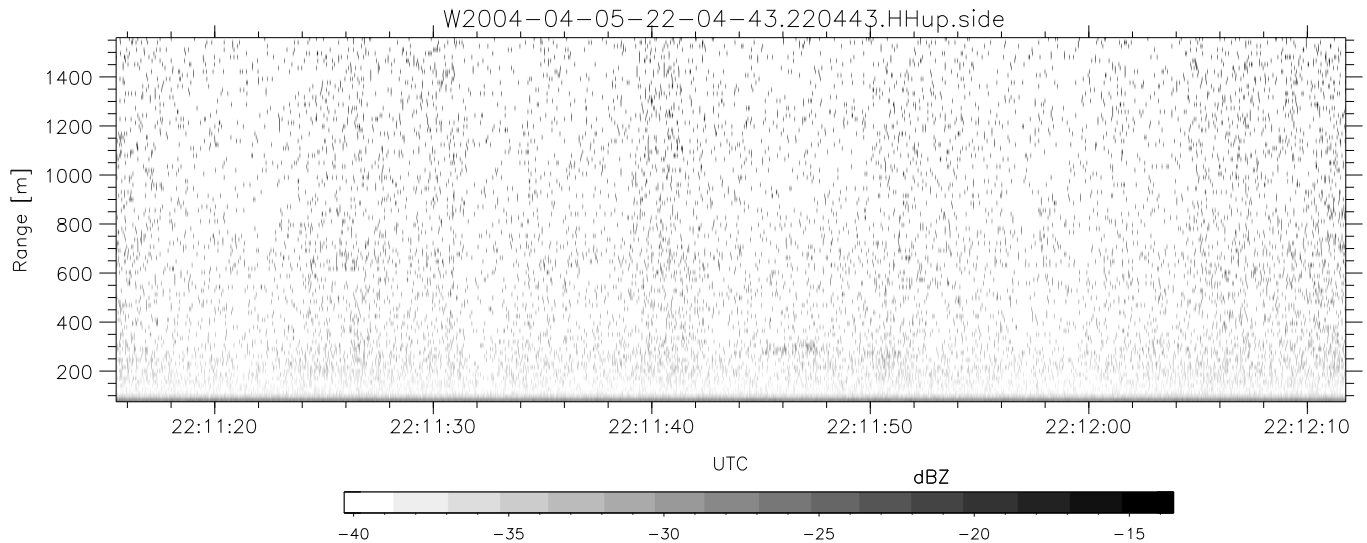
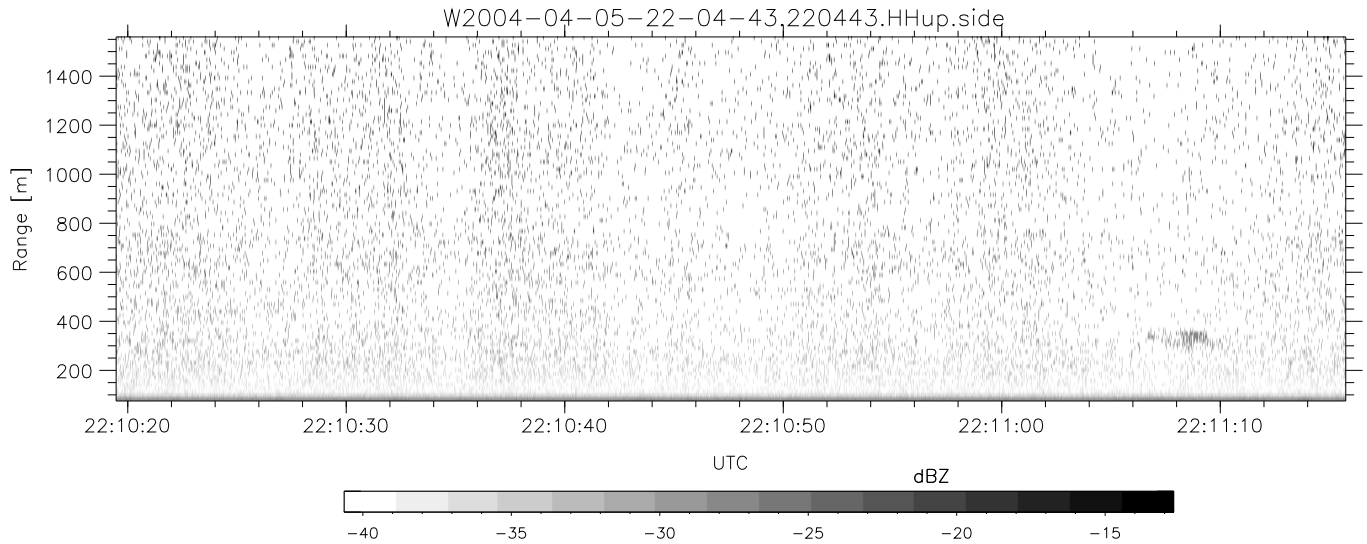
	Min	Max	Mean	Std	Varc%
hhN(dB)	-66.67	-63.08	-64.82	-74.93	9.8
vvN(dB)	-66.67	-63.30	-64.91	-75.00	9.8
hhL(dB)	-5.88	-3.13	-4.70	-14.86	9.6
vvL(dB)	5.85	6.00	6.00	-23.49	0.1
ppN(m/s)	-12.70	12.18	-0.05	4.16	
ppT(m/s)	-100.3	96.22	-0.40	32.85	
hh/vv(dB)	NaN	45.35	4.66	30.90	4213
vh/hh(dB)	-99	-99	-99	-99	-99
hv/vv(dB)	NaN	-34.15	-55.13	-47.23	616.
hnjmp(dB)			-0.14		
vnjmp(dB)			-0.13		



CIFEX 2004 Data (cal/250ns+2.5/100ns-3.5/500ns: 53.0,50.0)

W2004-04-05-22-04-43 - PPMAG4, IRIG:1/0/2
 UTC: 22:04:43.37 to 22:26:56.84, Dur: 1333s
 TimeLngth: 1333.48s, TimeInt: 28ms (35.5pps)
 TimeCor=-13.0s, PPS(min,max,med): 35,36,35
 Timeint/DSPdiff(mn,min,mx):28,28,28/28,28,28
 Prof: 302 to 47576, NumProf(r/t): 17571/47274
 ProcTime/Recs: 22:04:43-22:12:58/0-17570
 ADacqtime: 25ms; DRate: 198.4KB/s; Flags: 0, 0, 0
 Pulse: 275ns, IFfilt: 5.0MHz; ppPol: HH HV VV
 TxPol: HHVV, PRF: 20 10 20 10 kHz, NoiseFlg:2,3
 Range: Delay 75m, Spacing 15m, Gates 100
 Ave. Pulses: 84, Rng/Prof Aspect@90m/s: 5.9

	Min	Max	Mean	Std	Varc%
hhN (dB)	-66.67	-63.08	-64.82	-74.93	9.8
vvN (dB)	-66.67	-63.30	-64.91	-75.00	9.8
hhL (dB)	-5.88	-3.13	-4.70	-14.86	9.6
vvL (dB)	5.85	6.00	6.00	-23.49	0.1
ppN (m/s)	-12.70	12.18	-0.05	4.16	
ppT (m/s)	-100.3	96.22	-0.40	32.85	
hh/vv (dB)	NaN	45.35	4.66	30.90	4213
vh/hh (dB)	-99	-99	-99	-99	-99
hv/vv (dB)	NaN	-34.15	-55.13	-47.23	616.
hnjmp (dB)			-0.14		
vnjmp (dB)			-0.13		



CIFEX 2004 Data (cal/250ns+2.5/100ns-3.5/500ns: 53.0,50.0)

W2004-04-05-22-04-43 - PPMAG4, IRIG:1/0/2
 UTC: 22:04:43.37 to 22:26:56.84, Dur: 1333s
 TimeLngth: 1333.48s, TimeInt: 28ms (35.5pps)
 TimeCor=-13.0s, PPS(min,max,med): 35,36,35
 Timeint/DSPdiff(mn,min,mx):28,28,28/28,28,28
 Prof: 302 to 47576, NumProf(r/t): 17571/47274
 ProcTime/Recs: 22:04:43-22:12:58/0-17570
 ADacqtime: 25ms; DRate: 198.4KB/s; Flags: 0, 0, 0
 Pulse: 275ns, IFilt: 5.0MHz; ppPol: HH HV VV
 TxPol: HHVV, PRF: 20 10 20 10 kHz, NoiseFlg:2,3
 Range: Delay 75m, Spacing 15m, Gates 100
 Ave. Pulses: 84, Rng/Prof Aspect@90m/s: 5.9

	Min	Max	Mean	Std	Varc%
hhN (dB)	-66.67	-63.08	-64.82	-74.93	9.8
vvN (dB)	-66.67	-63.30	-64.91	-75.00	9.8
hhL (dB)	-5.88	-3.13	-4.70	-14.86	9.6
vvL (dB)	5.85	6.00	6.00	-23.49	0.1
ppN (m/s)	-12.70	12.18	-0.05	4.16	
ppT (m/s)	-100.3	96.22	-0.40	32.85	
hh/vv (dB)	NaN	45.35	4.66	30.90	4213
vh/hh (dB)	-99	-99	-99	-99	-99
hv/vv (dB)	NaN	-34.15	-55.13	-47.23	616.
hnjmp (dB)			-0.14		
vnjmp (dB)			-0.13		