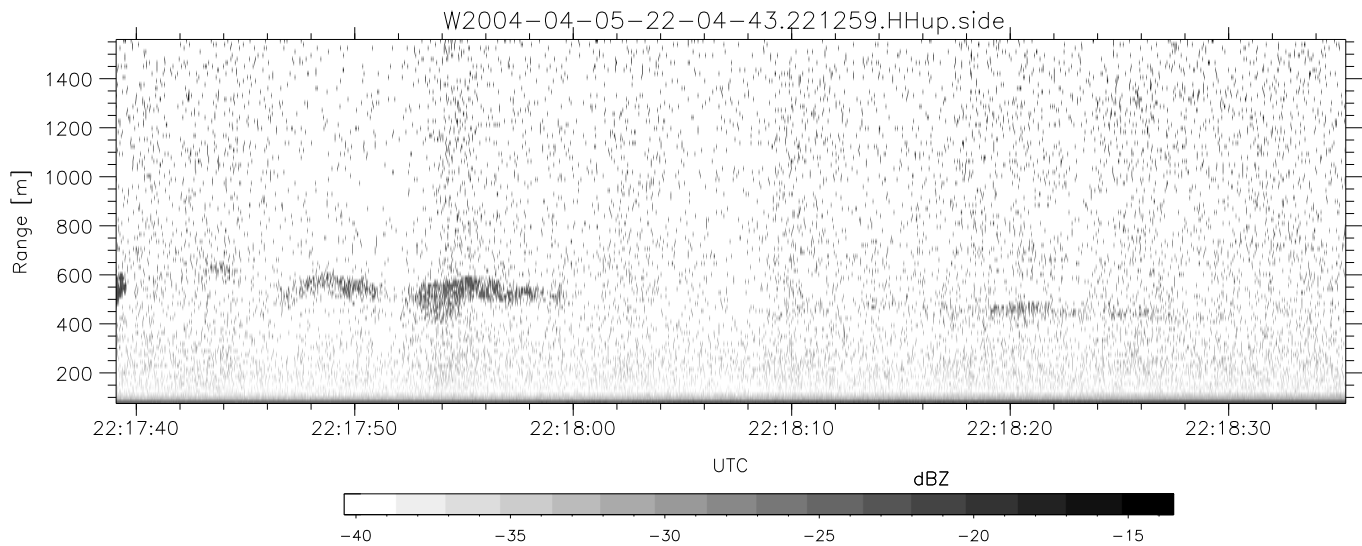
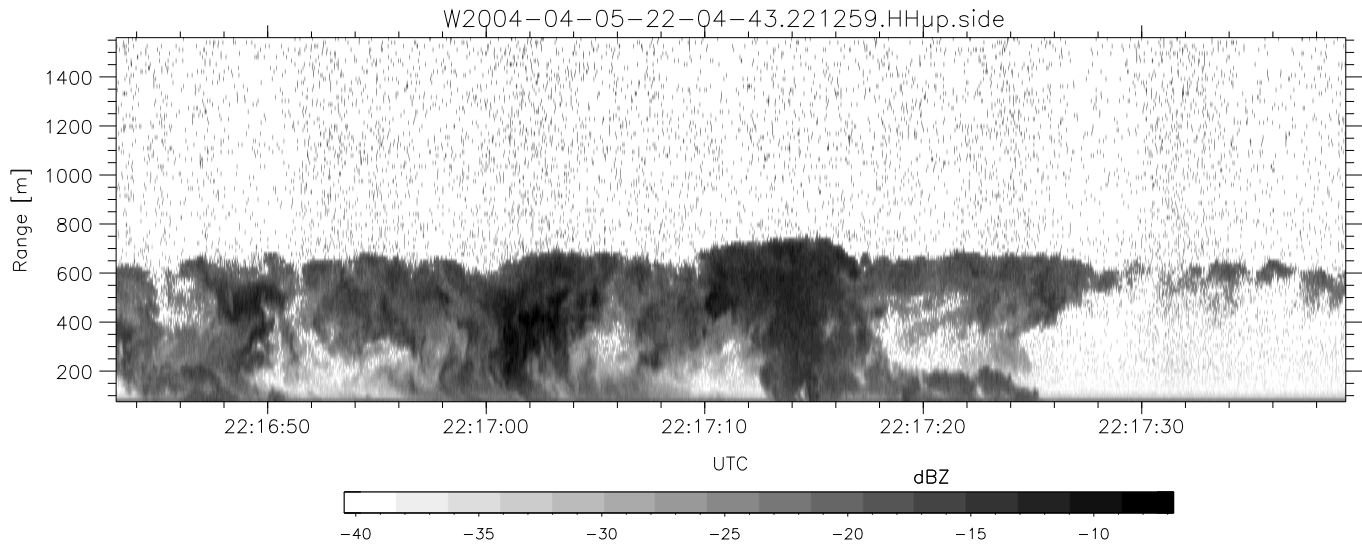
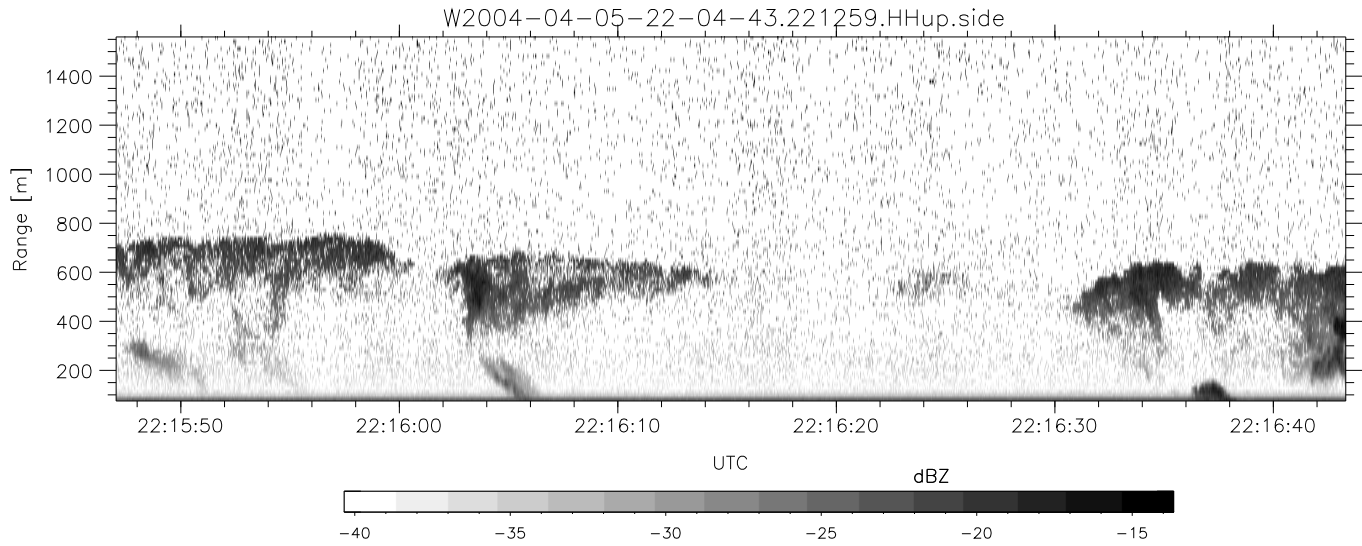


CIFEX 2004 Data (cal/250ns+2.5/100ns-3.5/500ns: 53.0,50.0)

W2004-04-05-22-04-43 - PPMAG4, IRIG:1/0/2
 UTC: 22:04:43.37 to 22:26:56.84, Dur: 1333s
 TimeLngth: 1333.48s, TimeInt: 28ms (35.5pps)
 TimeCor=-13.0s, PPS(min,max,med): 35,36,35
 Timeint/DSPdiff(mn,min,mx):28,28,30/28,28,28
 Prof: 302 to 47576, NumProf(r/t): 17571/47274
 ProcTime/Recs: 22:12:59-22:21:14/17571-35141
 ADacqtime: 25ms; DRate: 198.4KB/s; Flags: 0, 0, 0
 Pulse: 275ns, IFilt: 5.0MHz; ppPol: HH HV VV
 TxPol: HHVV, PRF: 20 10 20 10 kHz, NoiseFlg:4,4
 Range: Delay 75m, Spacing 15m, Gates 100
 Ave. Pulses: 84, Rng/Prof Aspect@90m/s: 5.9

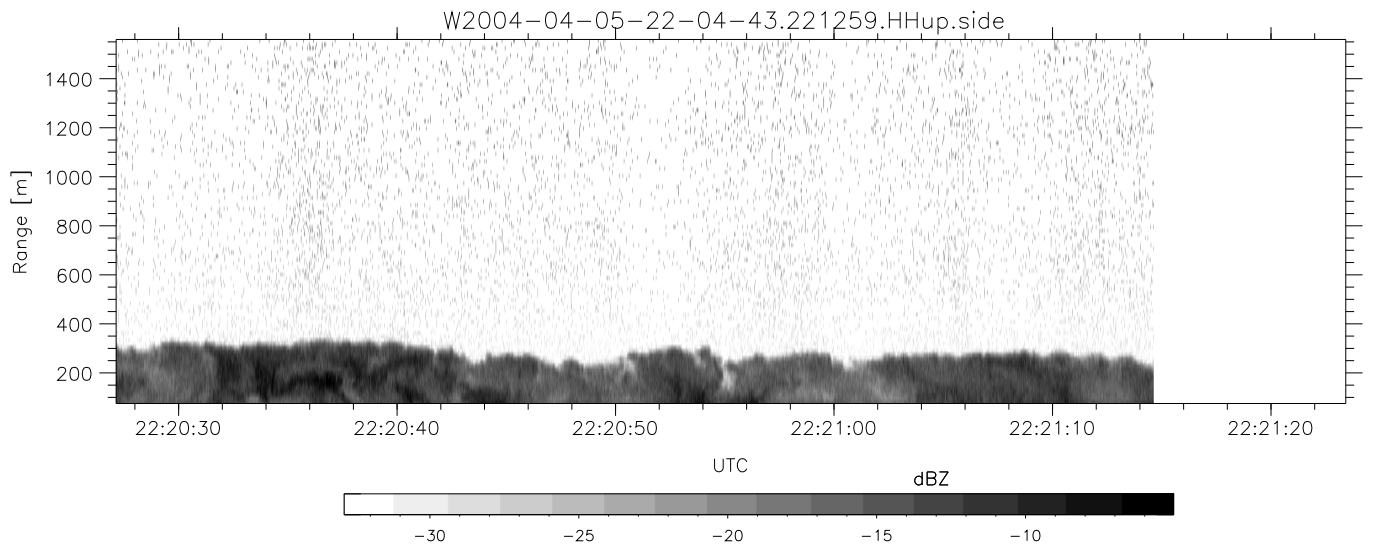
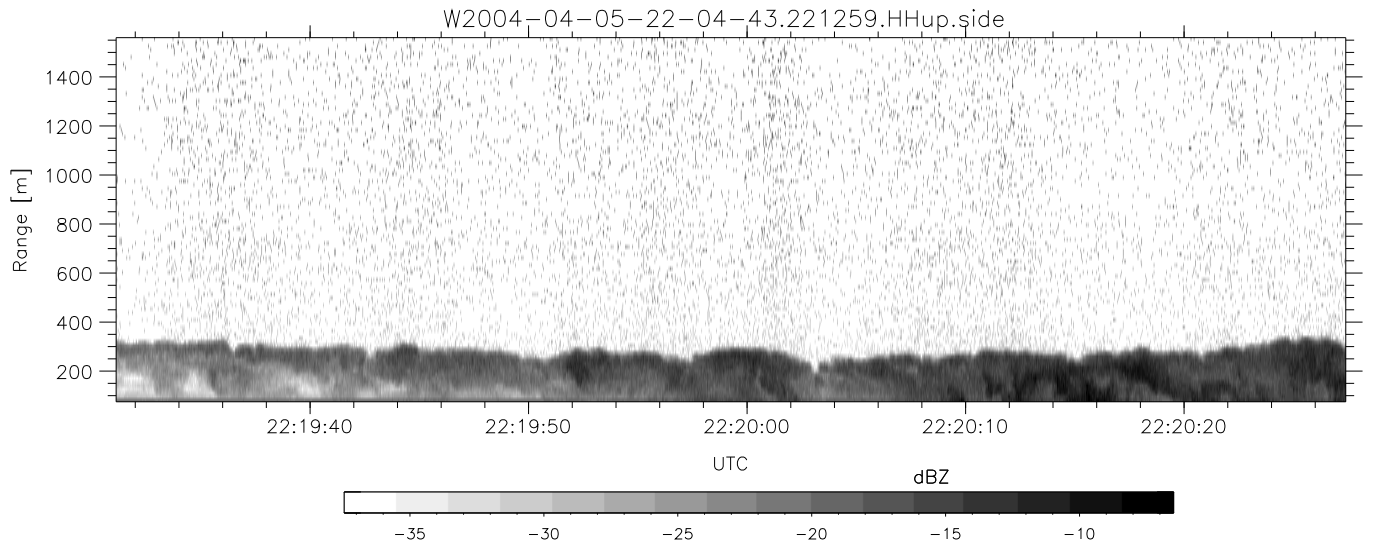
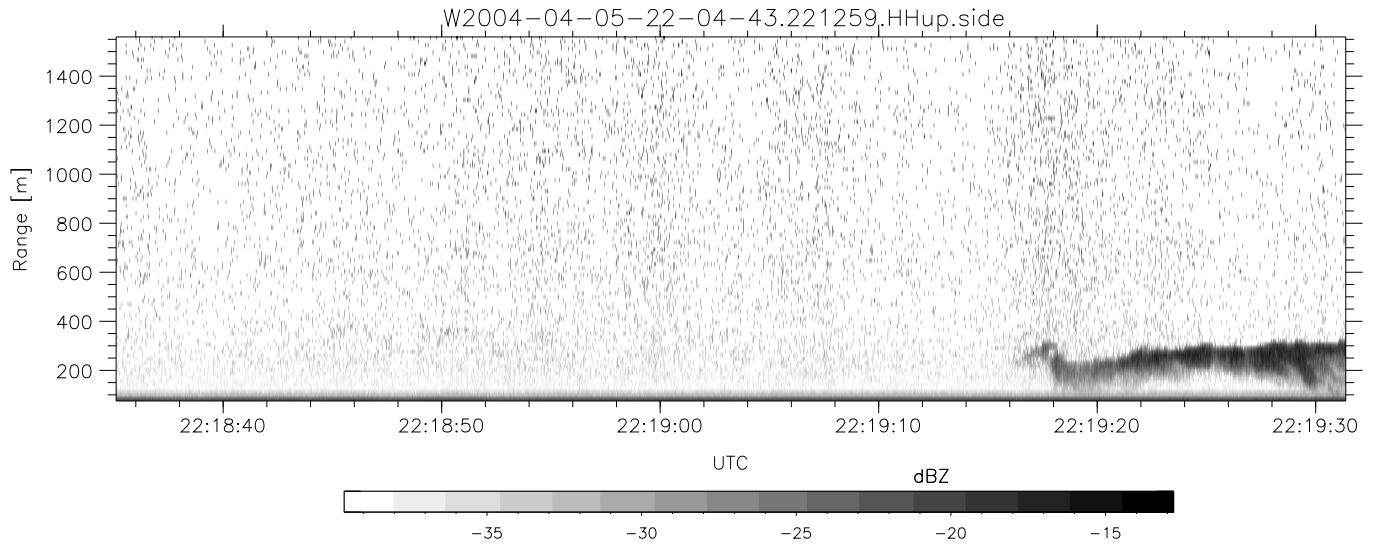
	Min	Max	Mean	Std	Varc%
hhN (dB)	-66.46	-63.14	-64.85	-74.93	9.8
vvN (dB)	-66.57	-63.30	-64.94	-74.98	9.9
hhL (dB)	-5.91	3.48	0.31	-2.29	55.0
vvL (dB)	3.30	6.00	6.00	-13.66	1.1
ppN (m/s)	-12.14	12.58	-0.00	4.15	
ppT (m/s)	-95.89	99.34	-0.03	32.77	
hh/vv (dB)	NaN	58.62	17.55	36.90	8612
vh/hh (dB)	-35.95	-29.28	-31.11	-35.68	34.9
hv/vv (dB)	NaN	-33.94	-56.20	-46.00	1046
hnjmp (dB)			0.15		
vnjmp (dB)			0.14		



CIFEX 2004 Data (cal/250ns+2.5/100ns-3.5/500ns: 53.0,50.0)

W2004-04-05-22-04-43 - PPMAG4, IRIG:1/0/2
 UTC: 22:04:43.37 to 22:26:56.84, Dur: 1333s
 TimeLngth: 1333.48s, TimeInt: 28ms (35.5pps)
 TimeCor=-13.0s, PPS(min,max,med): 35,36,35
 Timeint/DSPdiff(mn,min,mx):28,28,30/28,28,28
 Prof: 302 to 47576, NumProf(r/t): 17571/47274
 ProcTime/Recs: 22:12:59-22:21:14/17571-35141
 ADacqtime: 25ms; DRate: 198.4KB/s; Flags: 0, 0, 0
 Pulse: 275ns, IFfilt: 5.0MHz; ppPol: HH HV VV
 TxPol: HHVV, PRF: 20 10 20 10 kHz, Noiseflg:4,4
 Range: Delay 75m, Spacing 15m, Gates 100
 Ave. Pulses: 84, Rng/Prof Aspect@90m/s: 5.9

	Min	Max	Mean	Std	Varc%
hhN (dB)	-66.46	-63.14	-64.85	-74.93	9.8
vvN (dB)	-66.57	-63.30	-64.94	-74.98	9.9
hhL (dB)	-5.91	3.48	0.31	-2.29	55.0
vvL (dB)	3.30	6.00	6.00	-13.66	1.1
ppN (m/s)	-12.14	12.58	-0.00	4.15	
ppT (m/s)	-95.89	99.34	-0.03	32.77	
hh/vv (dB)	NaN	58.62	17.55	36.90	8612
vh/hh (dB)	-35.95	-29.28	-31.11	-35.68	34.9
hv/vv (dB)	NaN	-33.94	-56.20	-46.00	1046
hnjmp (dB)				0.15	
vnjmp (dB)				0.14	



CIFEX 2004 Data (cal/250ns+2.5/100ns-3.5/500ns: 53.0,50.0)

W2004-04-05-22-04-43 - PPMAG4, IRIG:1/0/2
 UTC: 22:04:43.37 to 22:26:56.84, Dur: 1333s
 TimeLngth: 1333.48s, TimeInt: 28ms (35.5pps)
 TimeCor=-13.0s, PPS(min,max,med): 35,36,35
 Timeint/DSPdiff(mn,min,mx):28,28,30/28,28,28
 Prof: 302 to 47576, NumProf(r/t): 17571/47274
 ProcTime/Recs: 22:12:59-22:21:14/17571-35141
 ADacqtime: 25ms; DRate: 198.4KB/s; Flags: 0, 0, 0
 Pulse: 275ns, IFfilt: 5.0MHz; ppPol: HH HV VV
 TxPol: HHVV, PRF: 20 10 20 10 kHz, Noiseflg:4,4
 Range: Delay 75m, Spacing 15m, Gates 100
 Ave. Pulses: 84, Rng/Prof Aspect@90m/s: 5.9

	Min	Max	Mean	Std	Varc%
hhN (dB)	-66.46	-63.14	-64.85	-74.93	9.8
vvN (dB)	-66.57	-63.30	-64.94	-74.98	9.9
hhL (dB)	-5.91	3.48	0.31	-2.29	55.0
vvL (dB)	3.30	6.00	6.00	-13.66	1.1
ppN (m/s)	-12.14	12.58	-0.00	4.15	
ppT (m/s)	-95.89	99.34	-0.03	32.77	
hh/vv (dB)	NaN	58.62	17.55	36.90	8612
vh/hh (dB)	-35.95	-29.28	-31.11	-35.68	34.9
hv/vv (dB)	NaN	-33.94	-56.20	-46.00	1046
hnjmp (dB)			0.15		
vnjmp (dB)			0.14		