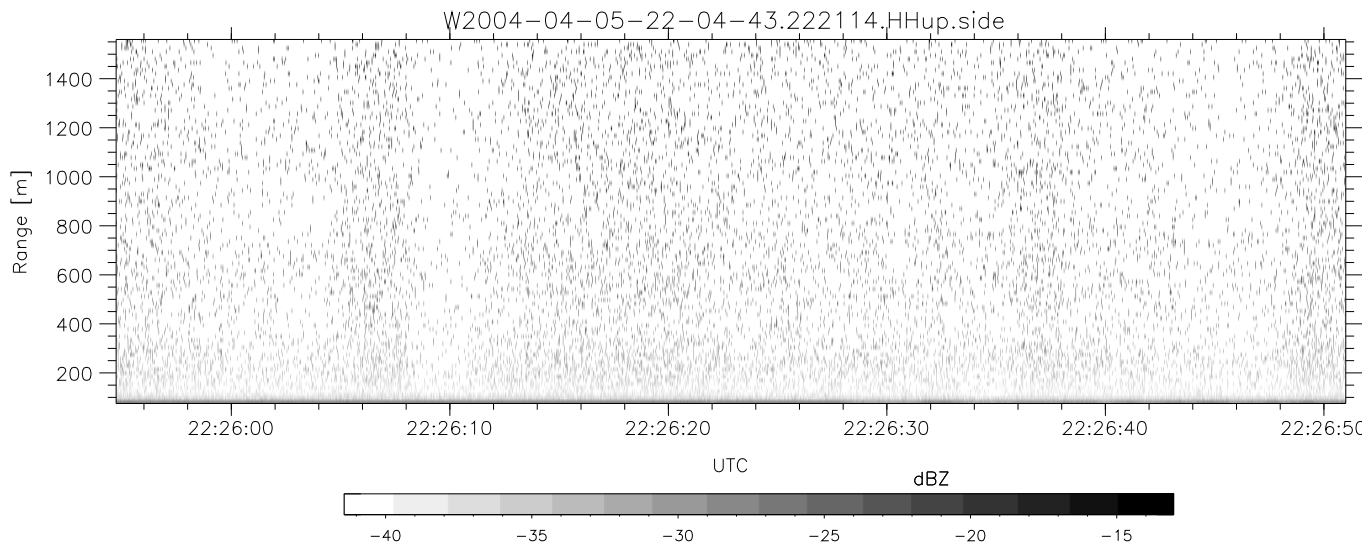
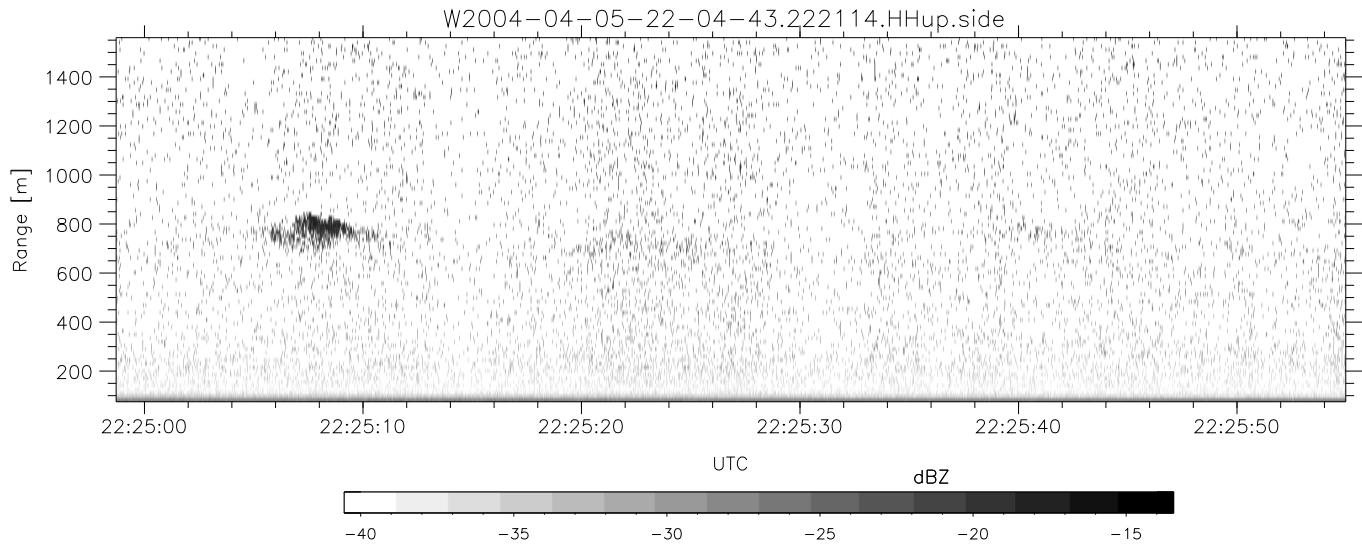
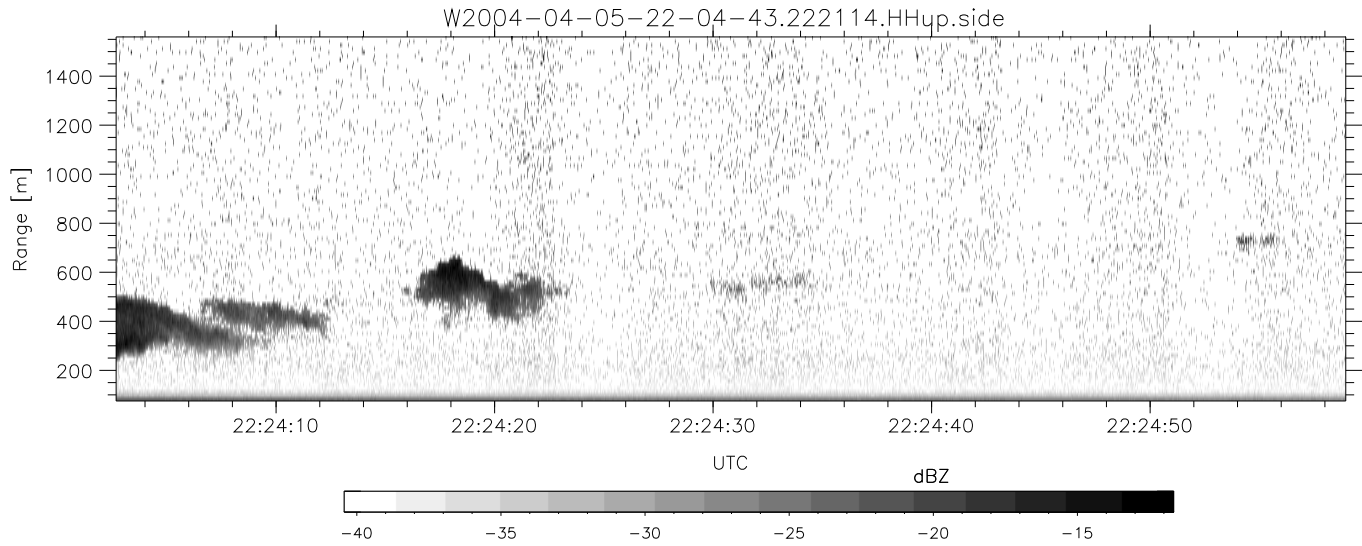


CIFEX 2004 Data (cal/250ns+2.5/100ns-3.5/500ns: 53.0,50.0)

W2004-04-05-22-04-43 - PPMAG4, IRIG:1/0/2
 UTC: 22:04:43.37 to 22:26:56.84, Dur: 1333s
 TimeLngth: 1333.48s, TimeInt: 28ms (35.5pps)
 TimeCor=-13.0s, PPS(min,max,med): 35,36,35
 Timeint/DSPdiff(mn,min,mx):28,28,28/28,28,28
 Prof: 302 to 47576, NumProf(r/t): 12132/47274
 ProcTime/Recs: 22:21:14-22:26:56/35142-47273
 ADacqtime: 25ms; DRate: 198.4KB/s; Flags: 0, 0, 0
 Pulse: 275ns, IFilt: 5.0MHz; ppPol: HH HV VV
 TxPol: HHVV, PRF: 20 10 20 10 kHz, NoiseFlg:4,2
 Range: Delay 75m, Spacing 15m, Gates 100
 Ave. Pulses: 84, Rng/Prof Aspect@90m/s: 5.9

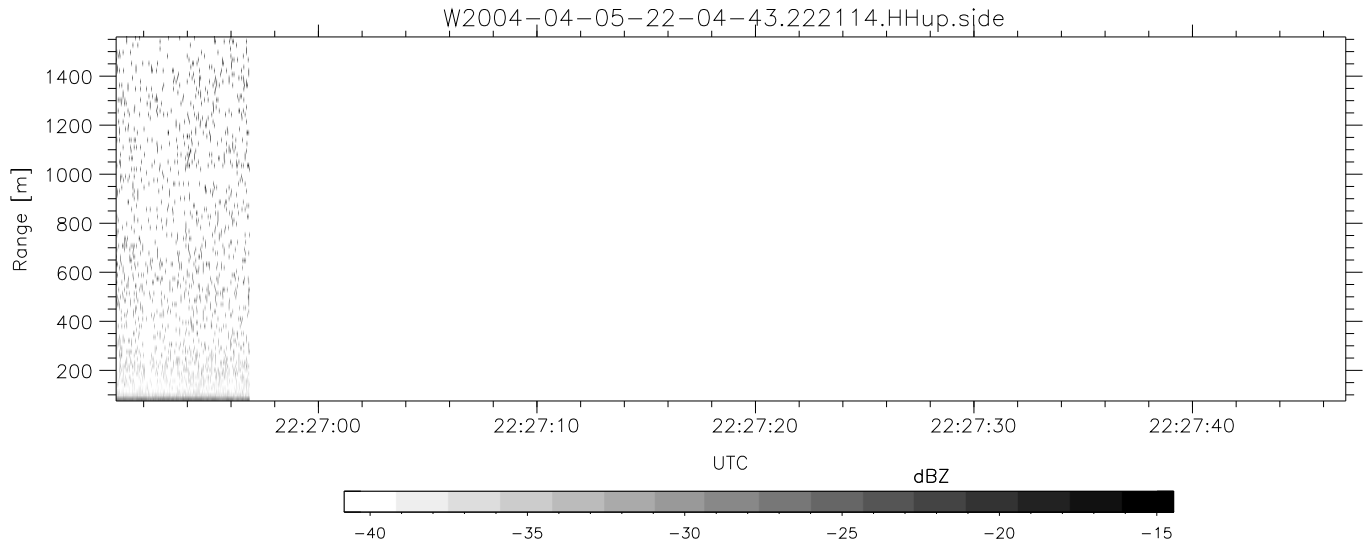
	Min	Max	Mean	Std	Varc%
hhN (dB)	-66.65	-63.20	-64.85	-74.94	9.8
vvN (dB)	-66.54	-63.33	-64.94	-75.01	9.8
hhL (dB)	-8.00	3.42	0.50	-1.74	59.7
vvL (dB)	5.25	6.00	6.00	-20.35	0.2
ppN (m/s)	-12.80	12.14	-0.01	4.14	
ppT (m/s)	-101.0	95.94	-0.10	32.70	
hh/vv (dB)	NaN	62.02	NaN	44.92	-428
vh/hh (dB)	-35.09	-28.58	-31.57	-35.34	42.0
hv/vv (dB)	NaN	-33.77	-55.40	-46.71	738.
hn_jmp (dB)			-0.14		
vn_jmp (dB)			-0.14		



CIFEX 2004 Data (cal/250ns+2.5/100ns-3.5/500ns: 53.0,50.0)

W2004-04-05-22-04-43 - PPMAG4, IRIG:1/0/2
 UTC: 22:04:43.37 to 22:26:56.84, Dur: 1333s
 TimeLngth: 1333.48s, TimeInt: 28ms (35.5pps)
 TimeCor=-13.0s, PPS(min,max,med): 35,36,35
 Timeint/DSPdiff(mn,min,mx):28,28,28/28,28,28
 Prof: 302 to 47576, NumProf(r/t): 12132/47274
 ProcTime/Recs: 22:21:14-22:26:56/35142-47273
 ADacqtime: 25ms; DRate: 198.4KB/s; Flags: 0, 0, 0
 Pulse: 275ns, IFilt: 5.0MHz; ppPol: HH HV VV
 TxPol: HHVV, PRF: 20 10 20 10 kHz, NoiseFlg:4,2
 Range: Delay 75m, Spacing 15m, Gates 100
 Ave. Pulses: 84, Rng/Prof Aspect@90m/s: 5.9

	Min	Max	Mean	Std	Varc%
hhN(dB)	-66.65	-63.20	-64.85	-74.94	9.8
vvN(dB)	-66.54	-63.33	-64.94	-75.01	9.8
hhL(dB)	-8.00	3.42	0.50	-1.74	59.7
vvL(dB)	5.25	6.00	6.00	-20.35	0.2
ppN(m/s)	-12.80	12.14	-0.01	4.14	
ppT(m/s)	-101.0	95.94	-0.10	32.70	
hh/vv(dB)	NaN	62.02	NaN	44.92	-428
vh/hh(dB)	-35.09	-28.58	-31.57	-35.34	42.0
hv/vv(dB)	NaN	-33.77	-55.40	-46.71	738.
hnjmp(dB)			-0.14		
vnjmp(dB)			-0.14		



CIFEX 2004 Data (cal/250ns+2.5/100ns-3.5/500ns: 53.0,50.0)

W2004-04-05-22-04-43 - PPMAG4, IRIG:1/0/2
 UTC: 22:04:43.37 to 22:26:56.84, Dur: 1333s
 TimeLngth: 1333.48s, TimeInt: 28ms (35.5pps)
 TimeCor=-13.0s, PPS(min,max,med): 35,36,35
 Timeint/DSPdiff(mn,min,mx):28,28,28/28,28,28
 Prof: 302 to 47576, NumProf(r/t): 12132/47274
 ProcTime/Recs: 22:21:14-22:26:56/35142-47273
 ADacqtime: 25ms; DRate: 198.4KB/s; Flags: 0, 0, 0
 Pulse: 275ns, IFfilt: 5.0MHz; ppPol: HH HV VV
 TxPol: HHVV, PRF: 20 10 20 10 kHz, NoiseFlg:4,2
 Range: Delay 75m, Spacing 15m, Gates 100
 Ave. Pulses: 84, Rng/Prof Aspect@90m/s: 5.9

	Min	Max	Mean	Std	Varc%
hhN(dB)	-66.65	-63.20	-64.85	-74.94	9.8
vvN(dB)	-66.54	-63.33	-64.94	-75.01	9.8
hhL(dB)	-8.00	3.42	0.50	-1.74	59.7
vvL(dB)	5.25	6.00	6.00	-20.35	0.2
ppN(m/s)	-12.80	12.14	-0.01	4.14	
ppT(m/s)	-101.0	95.94	-0.10	32.70	
hh/vv(dB)	NaN	62.02	NaN	44.92	-428
vh/hh(dB)	-35.09	-28.58	-31.57	-35.34	42.0
hv/vv(dB)	NaN	-33.77	-55.40	-46.71	738.
hnjmp(dB)			-0.14		
vnjmp(dB)			-0.14		