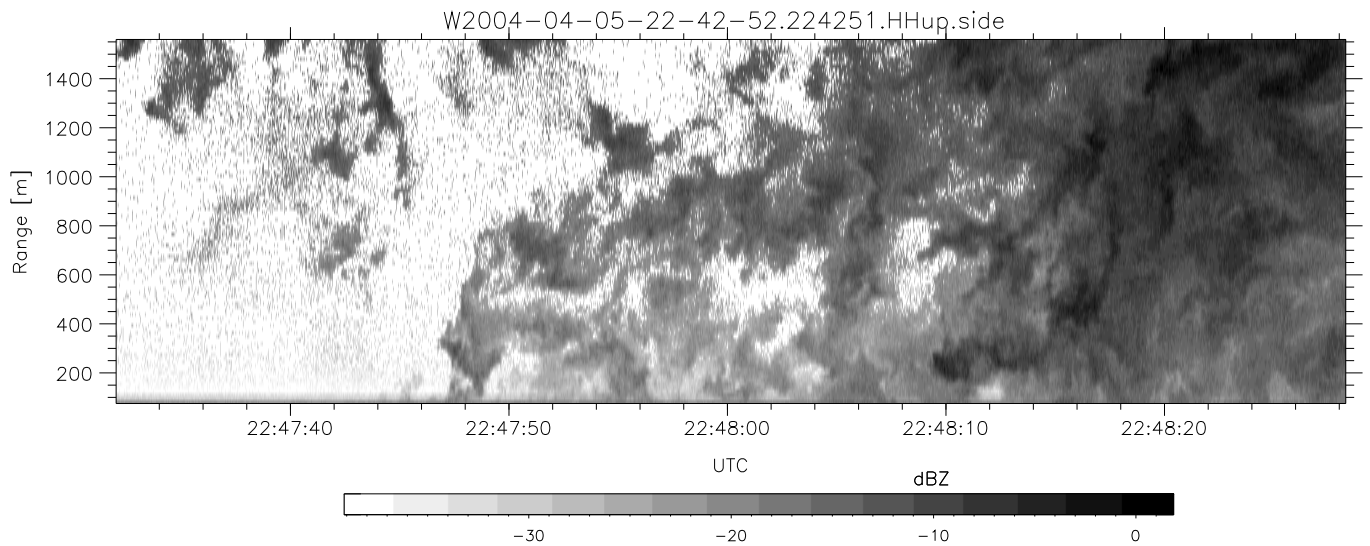
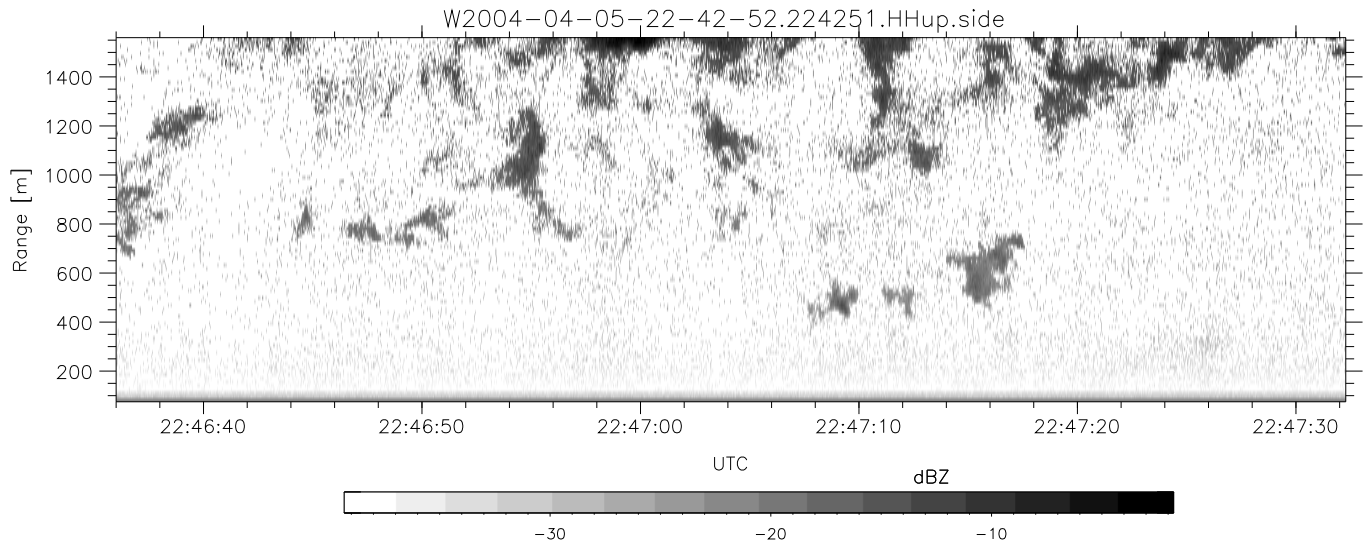
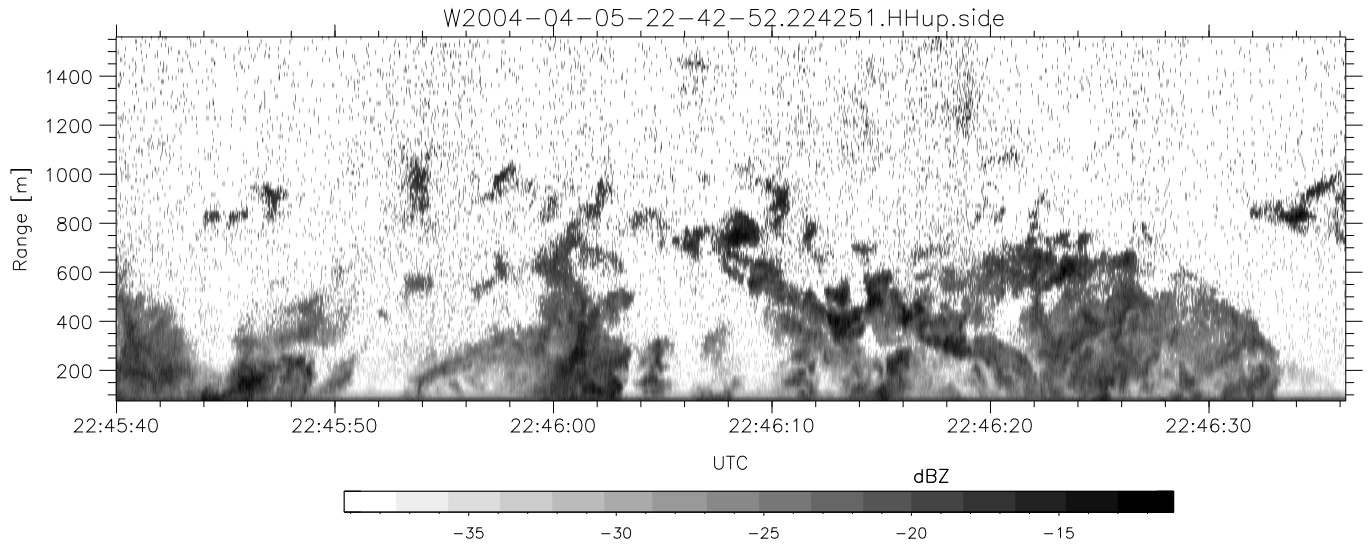


CIFEX 2004 Data (cal/250ns+2.5/100ns-3.5/500ns: 53.0,50.0)

W2004-04-05-22-42-52 - PPMAG4, IRIG:1/0/2  
 UTC: 22:42:51.95 to 22:54:45.18, Dur: 714s  
 TimeLngth: 713.24s, TimeInt: 28ms (35.5pps)  
 TimeCor=-13.0s, PPS(min,max,med): 35,36,35  
 Timeint/DSPdiff(mn,min,mx):28,28,28/28,28,28  
 Prof: 258 to 25544, NumProf(r/t): 17571/25286  
 ProcTime/Recs: 22:42:51-22:51:07/0-17570  
 ADacqtime: 25ms; DRate: 198.5KB/s; Flags: 0, 0, 0  
 Pulse: 275ns, IFilt: 5.0MHz; ppPol: HH HV VV  
 TxPol: HHVV, PRF: 20 10 20 10 kHz, Noiseflg:4,2  
 Range: Delay 75m, Spacing 15m, Gates 100  
 Ave. Pulses: 84, Rng/Prof Aspect@90m/s: 5.9

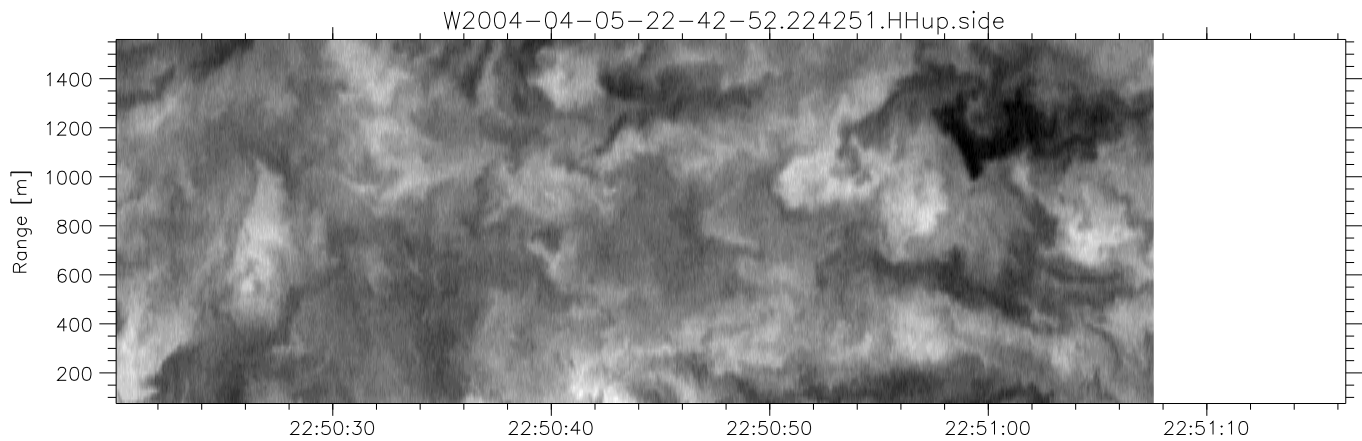
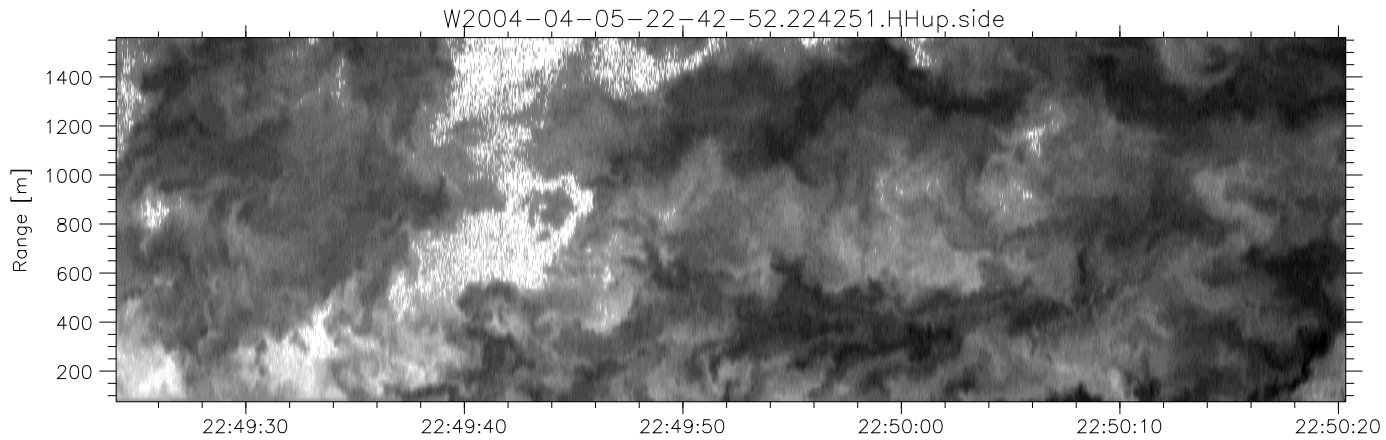
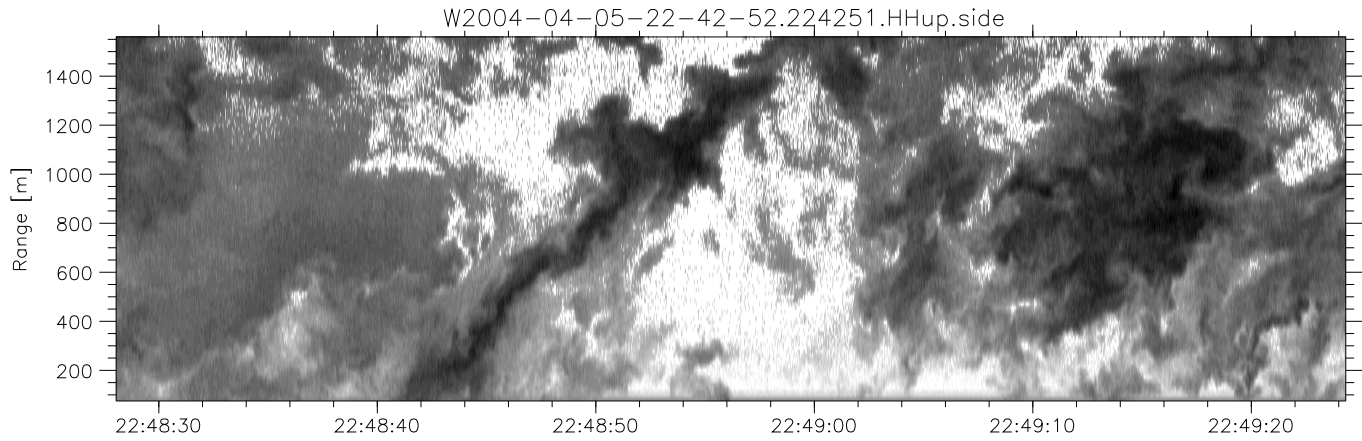
	Min	Max	Mean	Std	Varc%
hhN(dB)	-66.72	-63.11	-64.79	-74.80	10.0
vvN(dB)	-66.73	-63.51	-65.00	-75.04	9.9
hhL(dB)	-0.17	3.87	2.56	-6.36	12.8
vvL(dB)	5.84	6.00	6.00	-28.82	0.0
ppN(m/s)	-12.89	12.83	-0.04	4.16	
ppT(m/s)	-101.8	101.32	-0.32	32.89	
hh/vv(dB)	NaN	68.96	17.95	43.24	3382
vh/hh(dB)	NaN	-8.96	-32.44	-23.48	787.
hv/vv(dB)	NaN	-32.20	-49.49	-43.51	396.
hh_jmp(dB)			-0.15		
vv_jmp(dB)			-0.13		



CIFEX 2004 Data (cal/250ns+2.5/100ns-3.5/500ns: 53.0,50.0)

W2004-04-05-22-42-52 - PPMAG4, IRIG:1/0/2  
 UTC: 22:42:51.95 to 22:54:45.18, Dur: 714s  
 TimeLngth: 713.24s, TimeInt: 28ms (35.5pps)  
 TimeCor=-13.0s, PPS(min,max,med): 35,36,35  
 Timeint/DSPdiff(mn,min,mx):28,28,28/28,28,28  
 Prof: 258 to 25544, NumProf(r/t): 17571/25286  
 ProcTime/Recs: 22:42:51-22:51:07/0-17570  
 ADacqtime: 25ms; DRate: 198.5KB/s; Flags: 0, 0, 0  
 Pulse: 275ns, IFfilt: 5.0MHz; ppPol: HH HV VV  
 TxPol: HHVV, PRF: 20 10 20 10 kHz, Noiseflg:4,2  
 Range: Delay 75m, Spacing 15m, Gates 100  
 Ave. Pulses: 84, Rng/Prof Aspect@90m/s: 5.9

	Min	Max	Mean	Std	Varc%
hhN(dB)	-66.72	-63.11	-64.79	-74.80	10.0
vvN(dB)	-66.73	-63.51	-65.00	-75.04	9.9
hhL(dB)	-0.17	3.87	2.56	-6.36	12.8
vvL(dB)	5.84	6.00	6.00	-28.82	0.0
ppN(m/s)	-12.89	12.83	-0.04	4.16	
ppT(m/s)	-101.8	101.32	-0.32	32.89	
hh/vv(dB)	NaN	68.96	17.95	43.24	3382
vh/hh(dB)	NaN	-8.96	-32.44	-23.48	787.
hv/vv(dB)	NaN	-32.20	-49.49	-43.51	396.
hnjmp(dB)			-0.15		
vnjmp(dB)			-0.13		



CIFEX 2004 Data (cal/250ns+2.5/100ns-3.5/500ns: 53.0,50.0)

W2004-04-05-22-42-52 - PPMAG4, IRIG:1/0/2  
 UTC: 22:42:51.95 to 22:54:45.18, Dur: 714s  
 TimeLngth: 713.24s, TimeInt: 28ms (35.5pps)  
 TimeCor=-13.0s, PPS(min,max,med): 35,36,35  
 Timeint/DSPdiff(mn,min,mx):28,28,28/28,28,28  
 Prof: 258 to 25544, NumProf(r/t): 17571/25286  
 ProcTime/Recs: 22:42:51-22:51:07/0-17570  
 ADacqtime: 25ms; DRate: 198.5KB/s; Flags: 0, 0, 0  
 Pulse: 275ns, IFfilt: 5.0MHz; ppPol: HH HV VV  
 TxPol: HHVV, PRF: 20 10 20 10 kHz, Noiseflg:4,2  
 Range: Delay 75m, Spacing 15m, Gates 100  
 Ave. Pulses: 84, Rng/Prof Aspect@90m/s: 5.9

	Min	Max	Mean	Std	Varc%
hhN(dB)	-66.72	-63.11	-64.79	-74.80	10.0
vvN(dB)	-66.73	-63.51	-65.00	-75.04	9.9
hhL(dB)	-0.17	3.87	2.56	-6.36	12.8
vvL(dB)	5.84	6.00	6.00	-28.82	0.0
ppN(m/s)	-12.89	12.83	-0.04	4.16	
ppT(m/s)	-101.8	101.32	-0.32	32.89	
hh/vv(dB)	NaN	68.96	17.95	43.24	3382
vh/hh(dB)	NaN	-8.96	-32.44	-23.48	787.
hv/vv(dB)	NaN	-32.20	-49.49	-43.51	396.
hnjmp(dB)			-0.15		
vnjmp(dB)			-0.13		