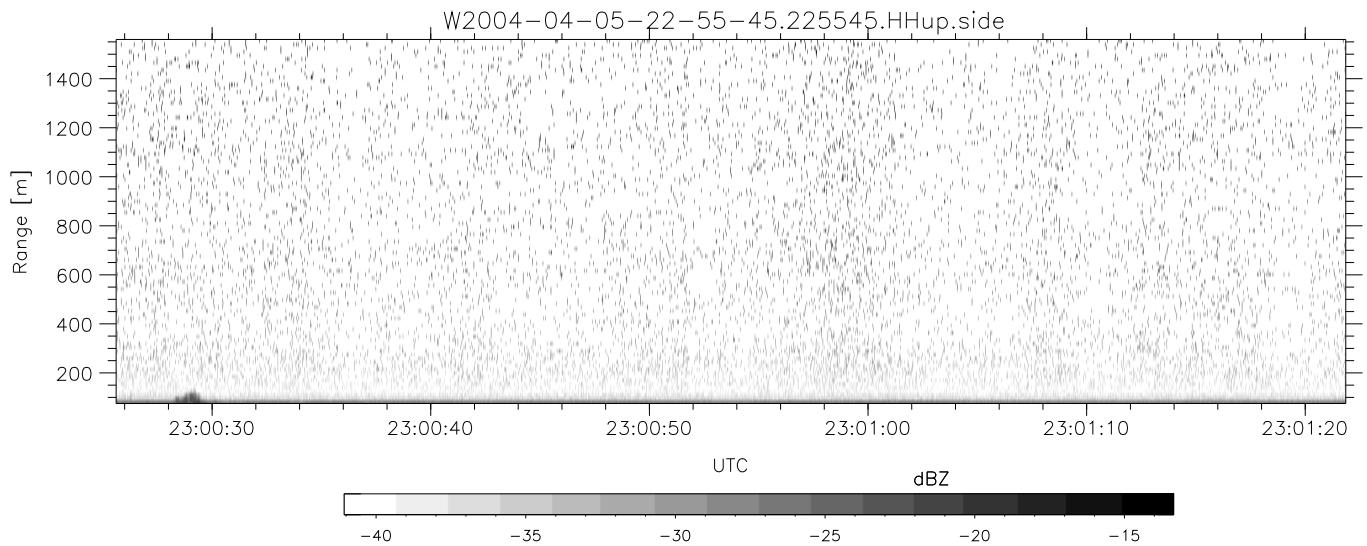
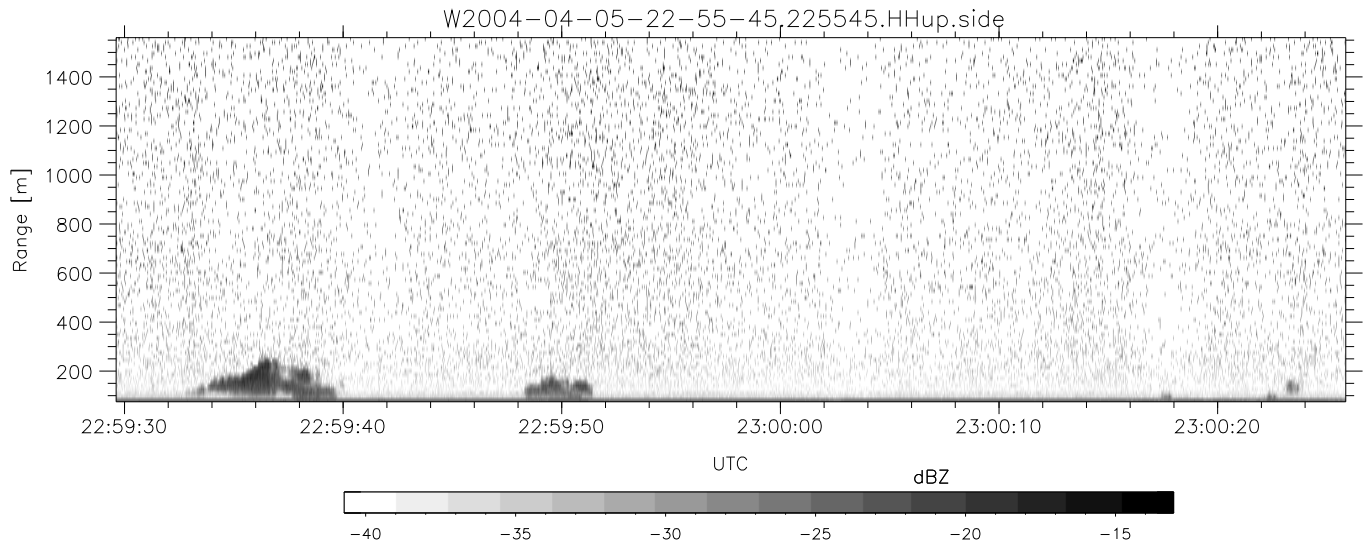
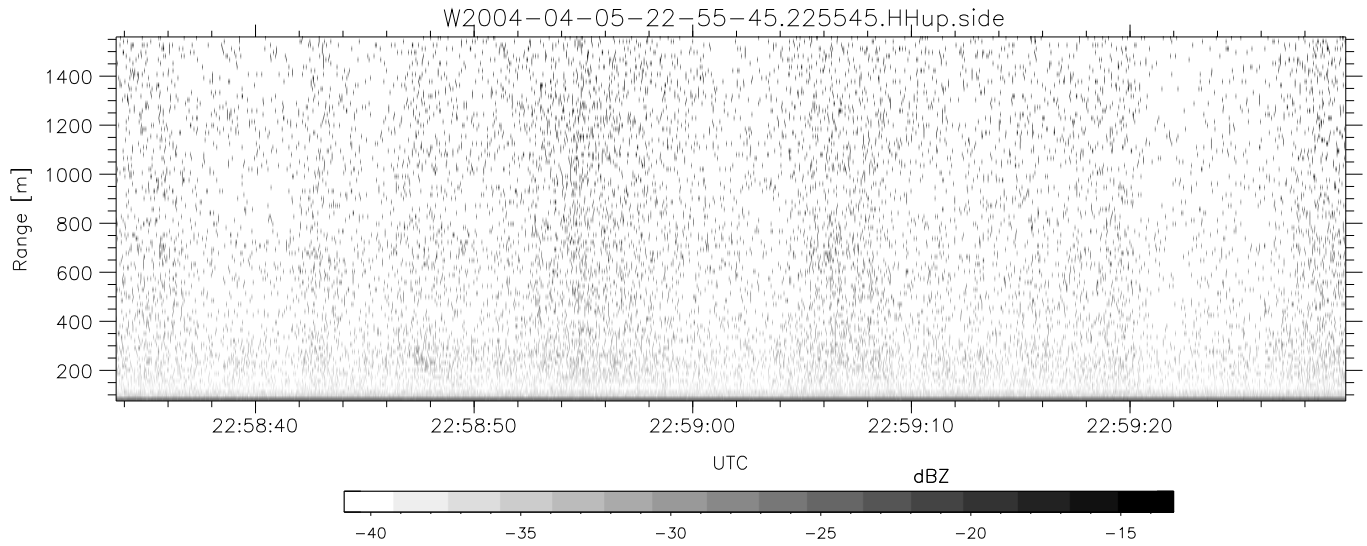


CIFEX 2004 Data (cal/250ns+2.5/100ns-3.5/500ns: 53.0,50.0)

W2004-04-05-22-55-45 - PPMAG4, IRIG:1/0/2
 UTC: 22:55:45.65 to 23:02:19.40, Dur: 394s
 TimeLngth: 393.73s, TimeInt: 28ms (35.5pps)
 TimeCor=-13.0s, PPS(min,max,med): 34,36,35
 Timeint/DSPdiff(mn,min,mx):28,28,51/28,28,28
 Prof: 246 to 14205, NumProf(r/t): 13959/13959
 ADacqtime: 25ms; DRate: 198.4KB/s; Flags: 0, 0, 0
 Pulse: 275ns, IFfilt: 5.0MHz; ppPol: HH HV VV
 TxPol: HHVV, PRF: 20 10 20 10 kHz, NoiseFlg:2,2
 Range: Delay 75m, Spacing 15m, Gates 100
 Ave. Pulses: 84, Rng/Prof Aspect@90m/s: 5.9

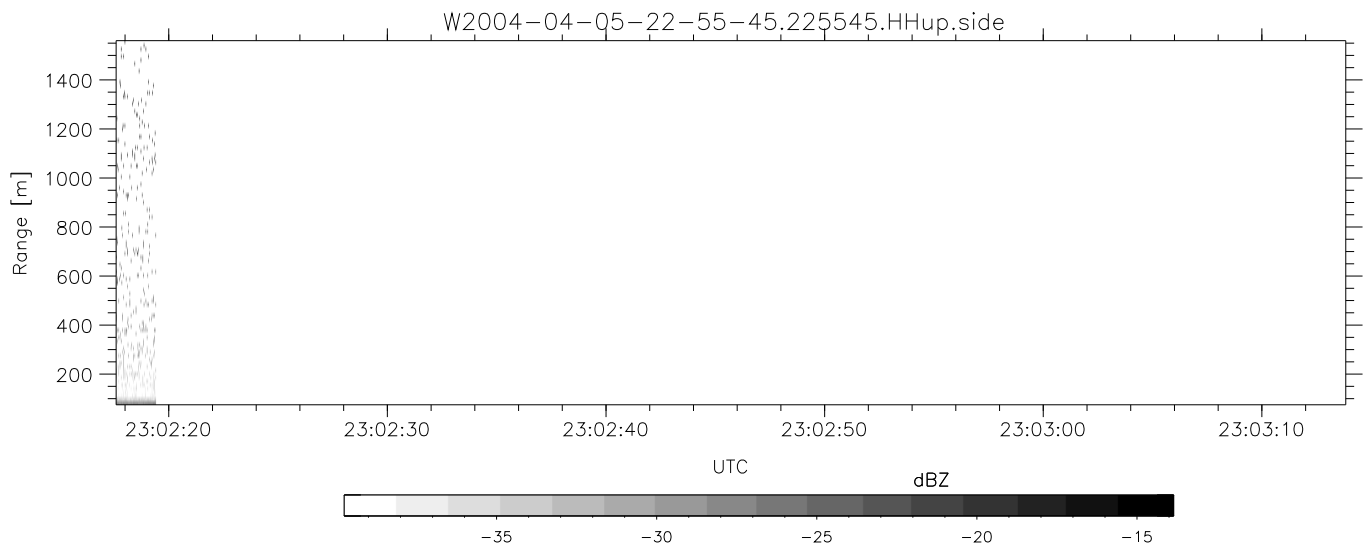
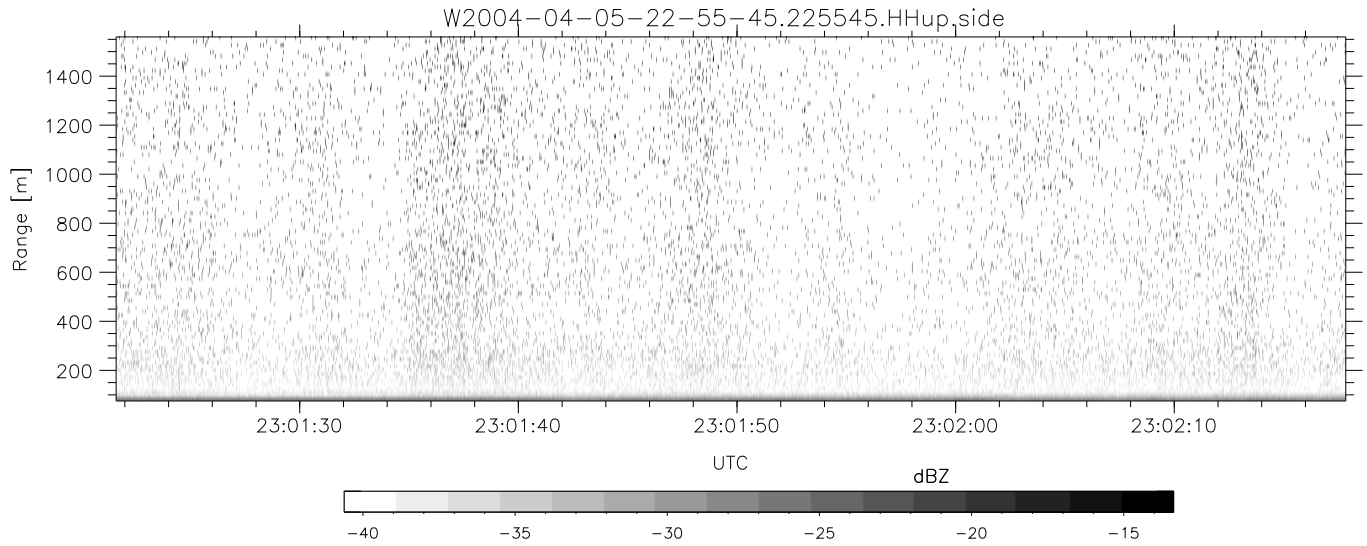
	Min	Max	Mean	Std	Varc%
hhN (dB)	-66.80	-63.34	-64.93	-75.04	9.8
vvN (dB)	-66.76	-63.51	-65.04	-75.12	9.8
hhL (dB)	-8.04	-1.66	-3.44	-10.81	18.4
vvL (dB)	5.67	6.00	6.00	-24.68	0.1
ppN (m/s)	-12.84	12.40	0.01	4.14	
ppT (m/s)	-101.4	97.96	0.09	32.72	
hh/vv (dB)	NaN	40.81	8.10	32.94	3044
vh/hh (dB)	-99	-99	-99	-99	-99
hv/vv (dB)	NaN	-34.52	-55.97	-46.35	914.
hn_jmp (dB)			-0.14		
vn_jmp (dB)			-0.13		



CIFEX 2004 Data (cal/250ns+2.5/100ns-3.5/500ns: 53.0,50.0)

W2004-04-05-22-55-45 - PPMAG4, IRIG:1/0/2
 UTC: 22:55:45.65 to 23:02:19.40, Dur: 394s
 TimeLngth: 393.73s, TimeInt: 28ms (35.5pps)
 TimeCor=-13.0s, PPS(min,max,med): 34,36,35
 Timeint/DSPdiff(mn,min,mx):28,28,51/28,28,28
 Prof: 246 to 14205, NumProf(r/t): 13959/13959
 ADacqtime: 25ms; DRate: 198.4KB/s; Flags: 0, 0, 0
 Pulse: 275ns, IFfilt: 5.0MHz; ppPol: HH HV VV
 TxPol: HHVV, PRF: 20 10 20 10 kHz, NoiseFlg:2,2
 Range: Delay 75m, Spacing 15m, Gates 100
 Ave. Pulses: 84, Rng/Prof Aspect@90m/s: 5.9

	Min	Max	Mean	Std	Varc%
hhN (dB)	-66.80	-63.34	-64.93	-75.04	9.8
vvN (dB)	-66.76	-63.51	-65.04	-75.12	9.8
hhL (dB)	-8.04	-1.66	-3.44	-10.81	18.4
vvL (dB)	5.67	6.00	6.00	-24.68	0.1
ppN (m/s)	-12.84	12.40	0.01	4.14	
ppT (m/s)	-101.4	97.96	0.09	32.72	
hh/vv (dB)	NaN	40.81	8.10	32.94	3044
vh/hh (dB)	-99	-99	-99	-99	-99
hv/vv (dB)	NaN	-34.52	-55.97	-46.35	914.
hnjmp (dB)			-0.14		
vnjmp (dB)			-0.13		



CIFEX 2004 Data (cal/250ns+2.5/100ns-3.5/500ns: 53.0,50.0)

W2004-04-05-22-55-45 - PPMAG4, IRIG:1/0/2
 UTC: 22:55:45.65 to 23:02:19.40, Dur: 394s
 TimeLngth: 393.73s, TimeInt: 28ms (35.5pps)
 TimeCor=-13.0s, PPS(min,max,med): 34,36,35
 Timeint/DSPdiff(mn,min,mx):28,28,51/28,28,28
 Prof: 246 to 14205, NumProf(r/t): 13959/13959
 ADacqtime: 25ms; DRate: 198.4KB/s; Flags: 0, 0, 0
 Pulse: 275ns, IFfilt: 5.0MHz; ppPol: HH HV VV
 TxPol: HHVV, PRF: 20 10 20 10 kHz, NoiseFlg:2,2
 Range: Delay 75m, Spacing 15m, Gates 100
 Ave. Pulses: 84, Rng/Prof Aspect@90m/s: 5.9

	Min	Max	Mean	Std	Varc%
hhN(dB)	-66.80	-63.34	-64.93	-75.04	9.8
vvN(dB)	-66.76	-63.51	-65.04	-75.12	9.8
hhL(dB)	-8.04	-1.66	-3.44	-10.81	18.4
vvL(dB)	5.67	6.00	6.00	-24.68	0.1
ppN(m/s)	-12.84	12.40	0.01	4.14	
ppT(m/s)	-101.4	97.96	0.09	32.72	
hh/vv(dB)	NaN	40.81	8.10	32.94	3044
vh/hh(dB)	-99	-99	-99	-99	-99
hv/vv(dB)	NaN	-34.52	-55.97	-46.35	914.
hnjmp(dB)			-0.14		
vnjmp(dB)			-0.13		