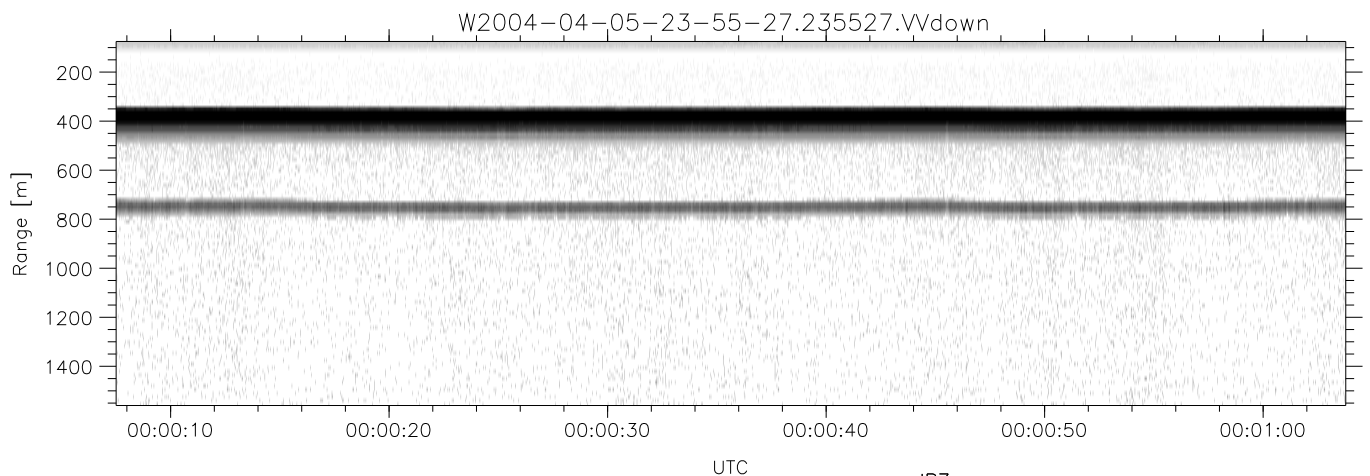
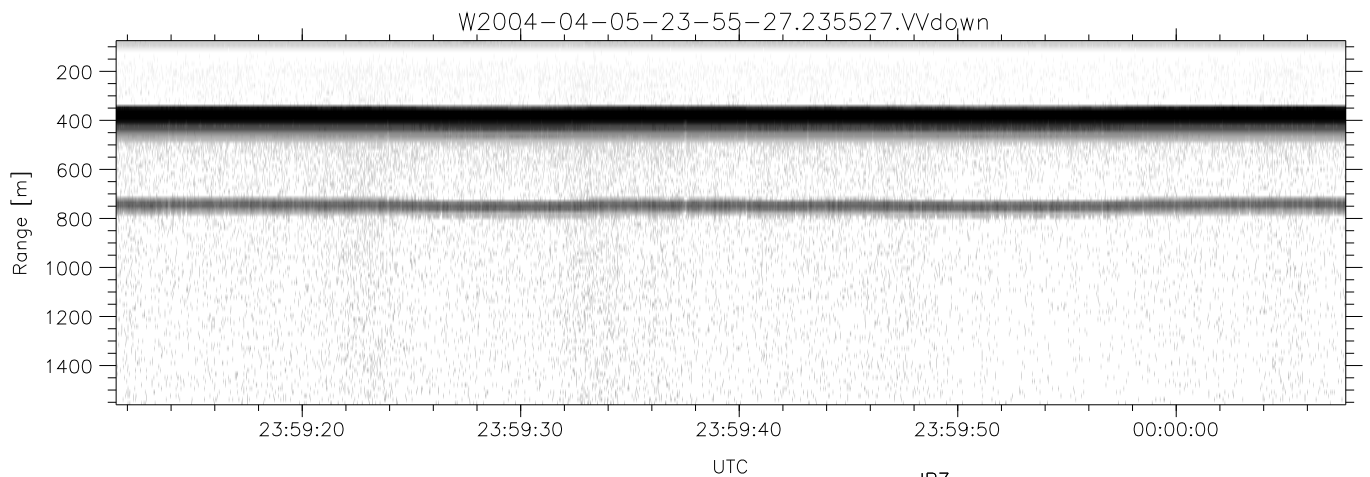
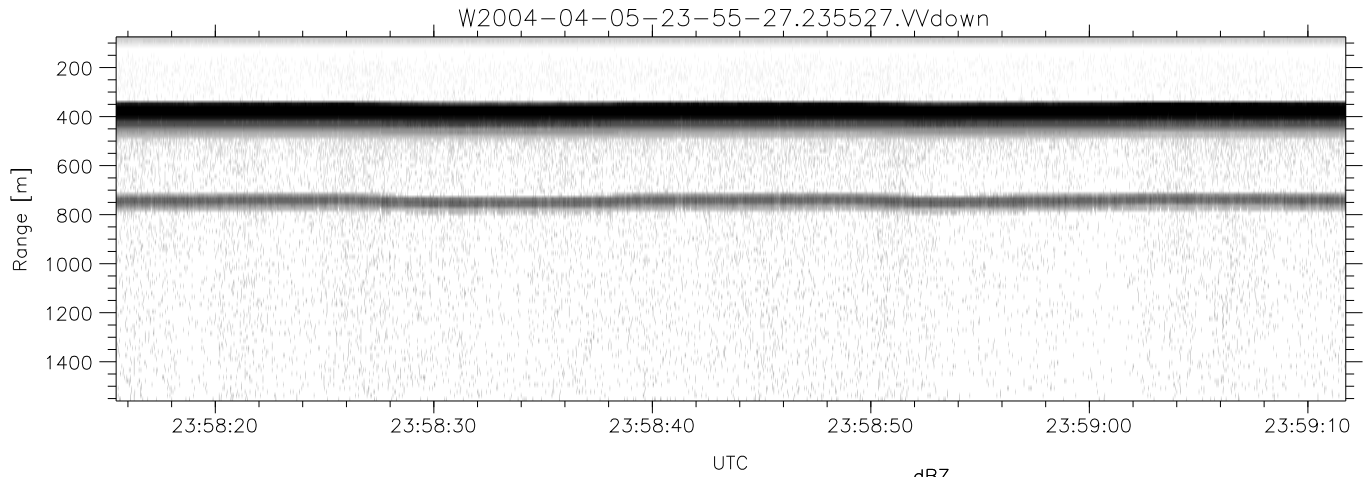


CIFEX 2004 Data (cal/250ns+2.5/100ns-3.5/500ns: 53.0,50.0)

W2004-04-05-23-55-27 - PPMAG4, IRIG:1/0/2  
 UTC: 23:55:27.43 to 00:05:43.49, Dur: 616s  
 TimeLngth: 616.06s, TimeInt: 28ms (35.5pps)  
 TimeCor=-13.0s, PPS(min,max,med): 35,36,35  
 Timeint/DSPdiff(mn,min,mx):28,28,28/28,28,28  
 Prof: 328 to 22169, NumProf(r/t): 17571/21841  
 ProcTime/Recs: 23:55:27-00:03:43/0-17570  
 ADacqtime: 25ms; DRate: 198.5KB/s; Flags: 0, 0, 0  
 Pulse: 275ns, IFfilt: 5.0MHz; ppPol: HH HV VV  
 TxPol: HHVV, PRF: 20 10 20 10 kHz, Noiseflg:2,2  
 Range: Delay 75m, Spacing 15m, Gates 100  
 Ave. Pulses: 84, Rng/Prof Aspect@90m/s: 5.9

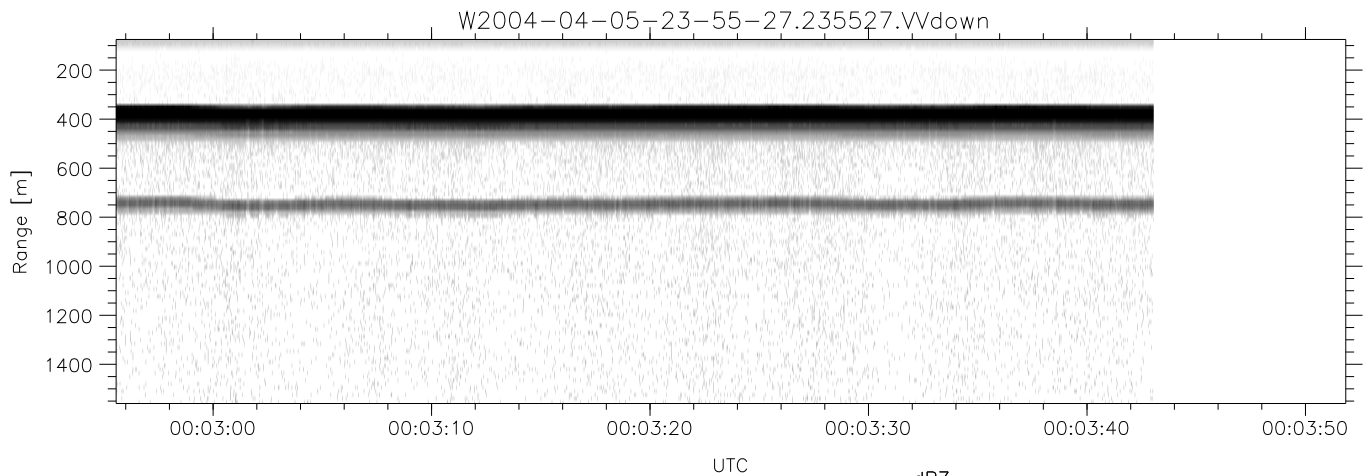
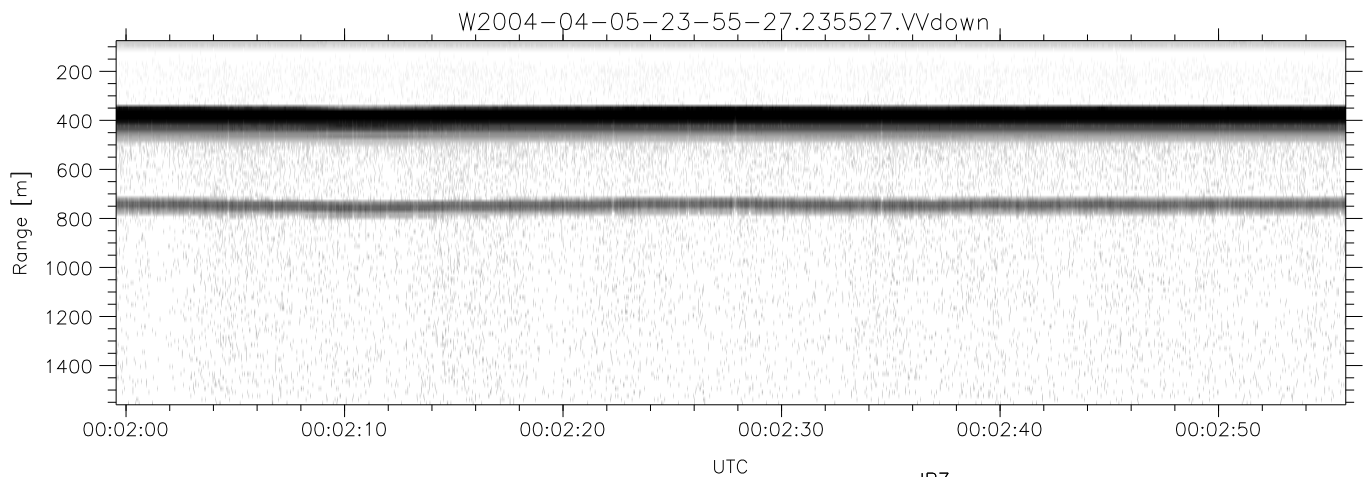
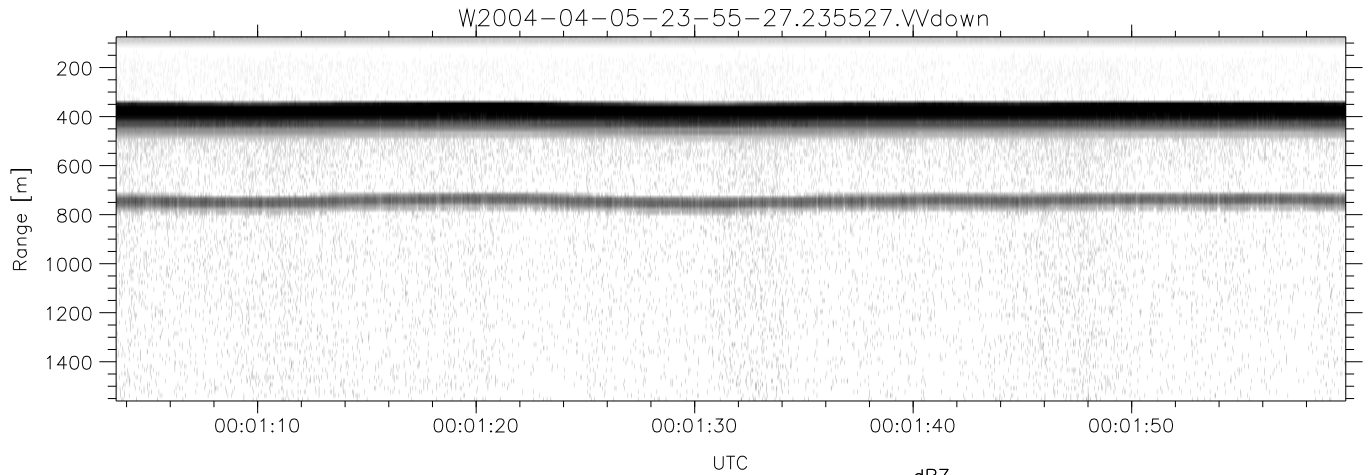
	Min	Max	Mean	Std	Varc%
hhN(dB)	-66.53	-63.16	-64.92	-74.95	9.9
vvN(dB)	-66.80	-63.40	-65.01	-75.03	10.0
hhL(dB)	-8.83	3.56	-1.83	-2.88	78.6
vvL(dB)	0.00	6.00	5.99	-11.46	1.8
ppN(m/s)	-12.61	12.78	-0.06	4.15	
ppT(m/s)	-99.58	100.98	-0.50	32.76	
hh/vv(dB)	NaN	60.91	20.36	39.36	7943
vh/hh(dB)	NaN	-28.51	-34.14	-35.66	70.6
hv/vv(dB)	NaN	-33.46	-54.45	-45.92	714.
hnjmp(dB)			-0.14		
vnjmp(dB)			-0.13		



CIFEX 2004 Data (cal/250ns+2.5/100ns-3.5/500ns: 53.0,50.0)

W2004-04-05-23-55-27 - PPMAG4, IRIG:1/0/2  
 UTC: 23:55:27.43 to 00:05:43.49, Dur: 616s  
 TimeLngth: 616.06s, TimeInt: 28ms (35.5pps)  
 TimeCor=-13.0s, PPS(min,max,med): 35,36,35  
 Timeint/DSPdiff(mn,min,mx):28,28,28/28,28,28  
 Prof: 328 to 22169, NumProf(r/t): 17571/21841  
 ProcTime/Recs: 23:55:27-00:03:43/0-17570  
 ADacqtime: 25ms; DRate: 198.5KB/s; Flags: 0, 0, 0  
 Pulse: 275ns, IFfilt: 5.0MHz; ppPol: HH HV VV  
 TxPol: HHVV, PRF: 20 10 20 10 kHz, Noiseflg:2,2  
 Range: Delay 75m, Spacing 15m, Gates 100  
 Ave. Pulses: 84, Rng/Prof Aspect@90m/s: 5.9

	Min	Max	Mean	Std	Varc%
hhN (dB)	-66.53	-63.16	-64.92	-74.95	9.9
vvN (dB)	-66.80	-63.40	-65.01	-75.03	10.0
hhL (dB)	-8.83	3.56	-1.83	-2.88	78.6
vvL (dB)	0.00	6.00	5.99	-11.46	1.8
ppN (m/s)	-12.61	12.78	-0.06	4.15	
ppT (m/s)	-99.58	100.98	-0.50	32.76	
hh/vv (dB)	NaN	60.91	20.36	39.36	7943
vh/hh (dB)	NaN	-28.51	-34.14	-35.66	70.6
hv/vv (dB)	NaN	-33.46	-54.45	-45.92	714.
hn_jmp (dB)			-0.14		
vn_jmp (dB)			-0.13		



CIFEX 2004 Data (cal/250ns+2.5/100ns-3.5/500ns: 53.0,50.0)

W2004-04-05-23-55-27 - PPMAG4, IRIG:1/0/2  
 UTC: 23:55:27.43 to 00:05:43.49, Dur: 616s  
 TimeLngth: 616.06s, TimeInt: 28ms (35.5pps)  
 TimeCor=-13.0s, PPS(min,max,med): 35,36,35  
 Timeint/DSPdiff(mn,min,mx):28,28,28/28,28,28  
 Prof: 328 to 22169, NumProf(r/t): 17571/21841  
 ProcTime/Recs: 23:55:27-00:03:43/0-17570  
 ADacqtime: 25ms; DRate: 198.5KB/s; Flags: 0, 0, 0  
 Pulse: 275ns, IFfilt: 5.0MHz; ppPol: HH HV VV  
 TxPol: HHVV, PRF: 20 10 20 10 kHz, Noiseflg:2,2  
 Range: Delay 75m, Spacing 15m, Gates 100  
 Ave. Pulses: 84, Rng/Prof Aspect@90m/s: 5.9

	Min	Max	Mean	Std	Varc%
hhN (dB)	-66.53	-63.16	-64.92	-74.95	9.9
vvN (dB)	-66.80	-63.40	-65.01	-75.03	10.0
hhL (dB)	-8.83	3.56	-1.83	-2.88	78.6
vvL (dB)	0.00	6.00	5.99	-11.46	1.8
ppN (m/s)	-12.61	12.78	-0.06	4.15	
ppT (m/s)	-99.58	100.98	-0.50	32.76	
hh/vv (dB)	NaN	60.91	20.36	39.36	7943
vh/hh (dB)	NaN	-28.51	-34.14	-35.66	70.6
hv/vv (dB)	NaN	-33.46	-54.45	-45.92	714.
hnjmp (dB)			-0.14		
vnjmp (dB)			-0.13		