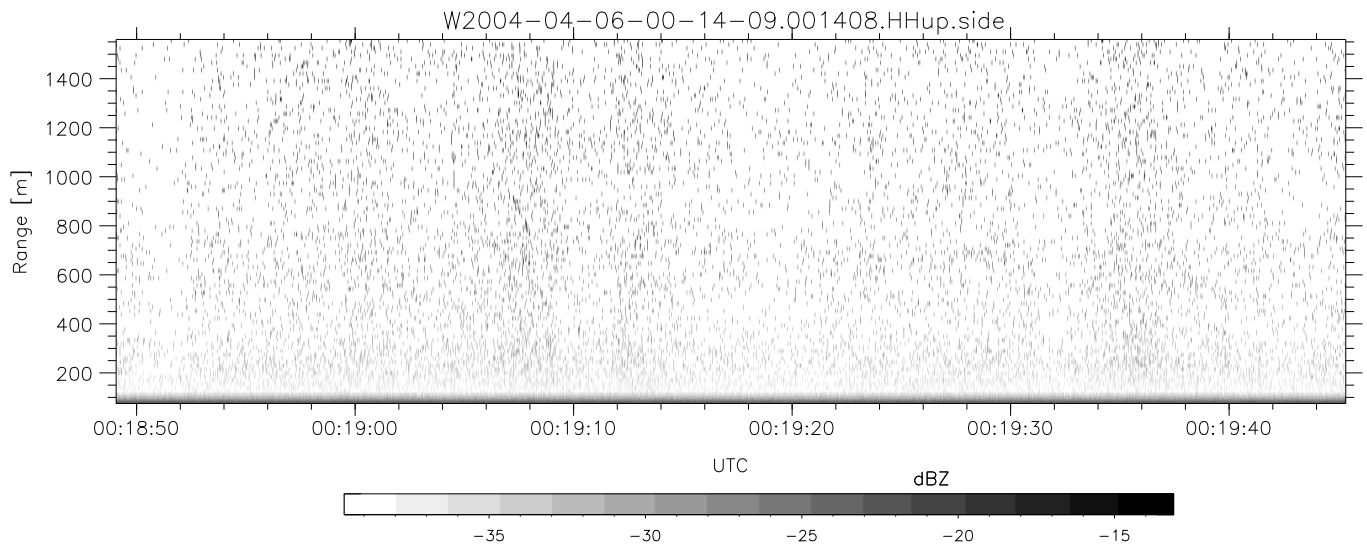
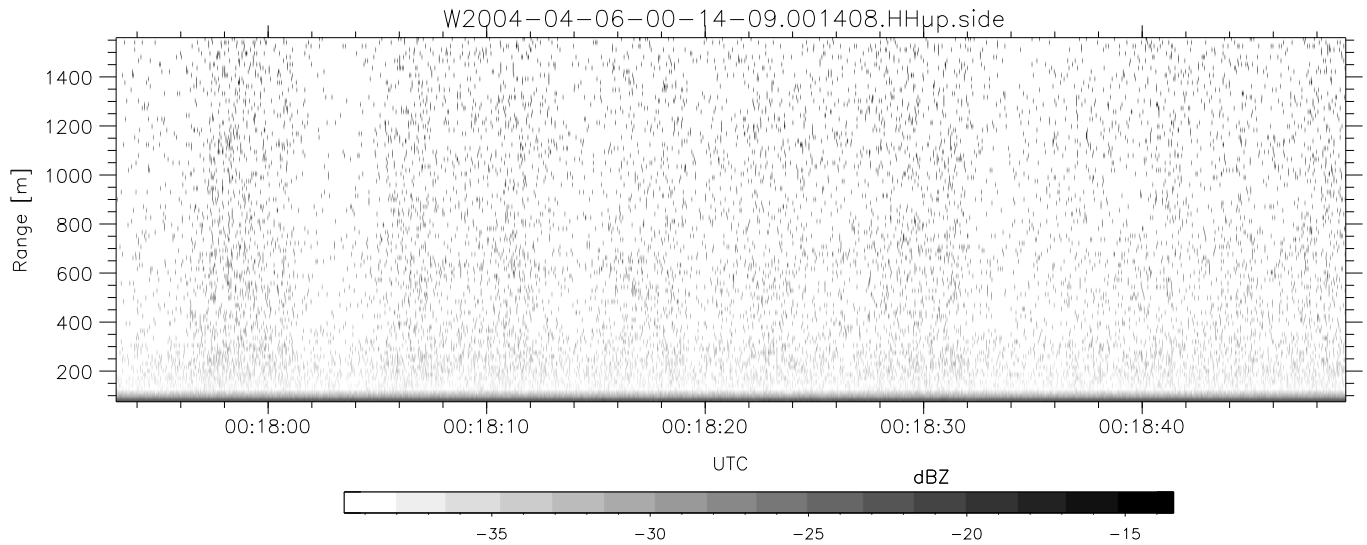
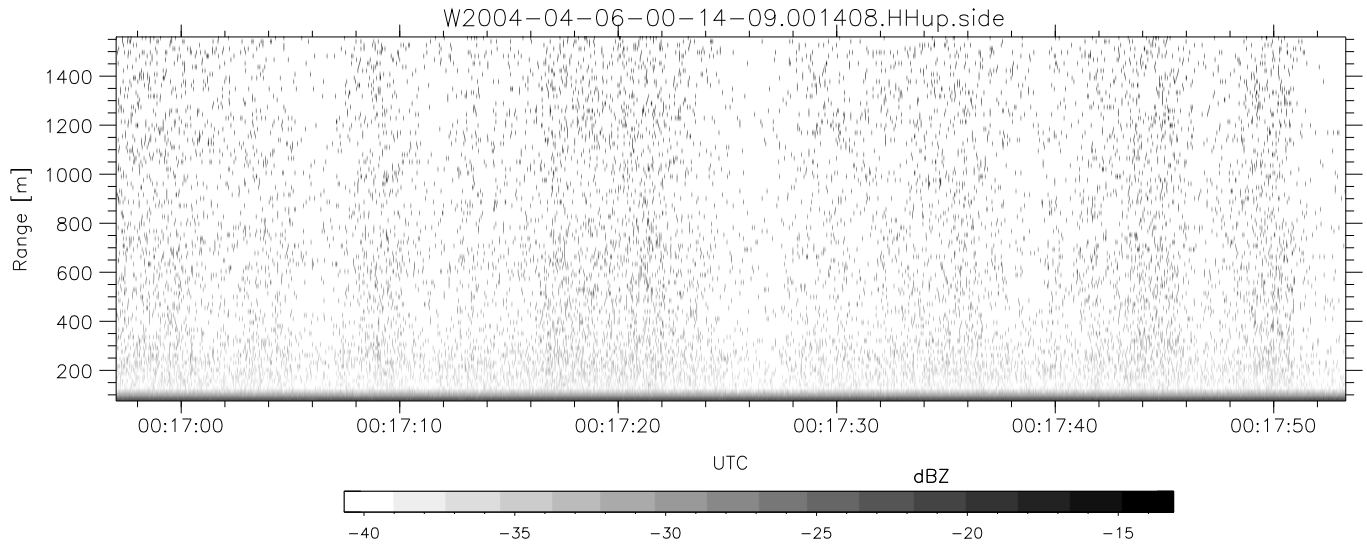


CIFEX 2004 Data (cal/250ns+2.5/100ns-3.5/500ns: 53.0,50.0)

W2004-04-06-00-14-09 - PPMAG4, IRIG:1/0/2
 UTC: 00:14:08.99 to 00:47:25.40, Dur: 1997s
 TimeLngth: 1996.42s, TimeInt: 28ms (35.5pps)
 TimeCor=-13.0s, PPS(min,max,med): 35,36,35
 Timeint/DSPdiff(mn,min,mx):28,28,28/28,28,28
 Prof: 439 to 71215, NumProf(r/t): 17571/70776
 ProcTime/Recs: 00:14:08-00:22:24/0-17570
 ADacqtime: 25ms; DRate: 198.4KB/s; Flags: 0, 0, 0
 Pulse: 275ns, IFilt: 5.0MHz; ppPol: HH HV VV
 TxPol: HHVV, PRF: 20 10 20 10 kHz, NoiseFlg:2,2
 Range: Delay 75m, Spacing 15m, Gates 100
 Ave. Pulses: 84, Rng/Prof Aspect@90m/s: 5.9

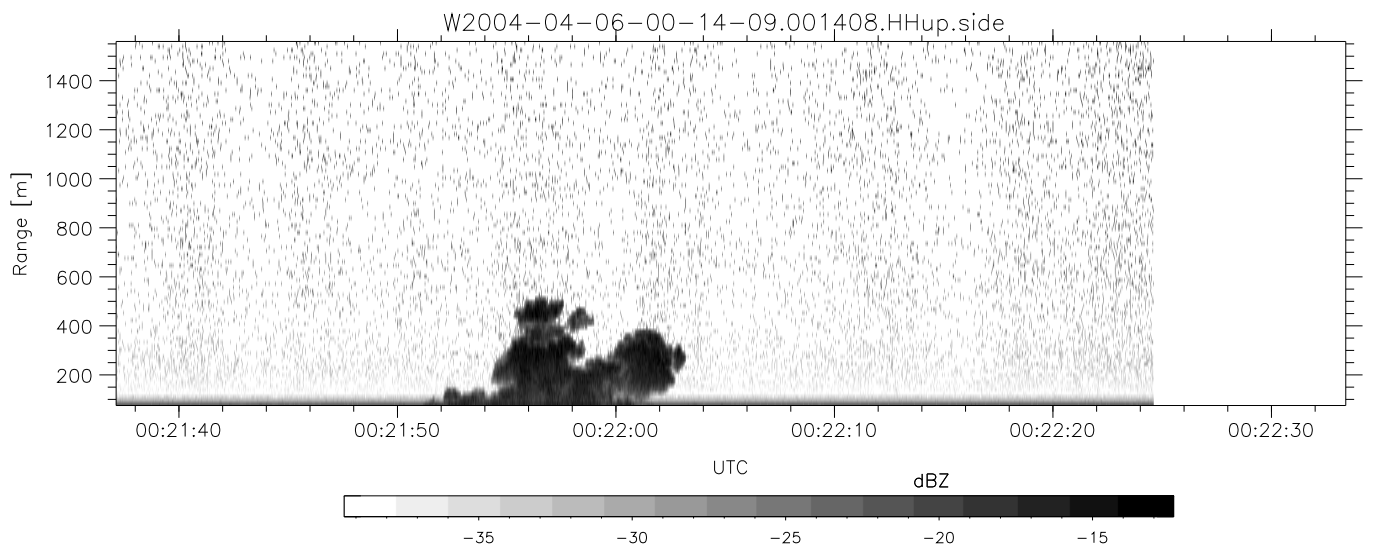
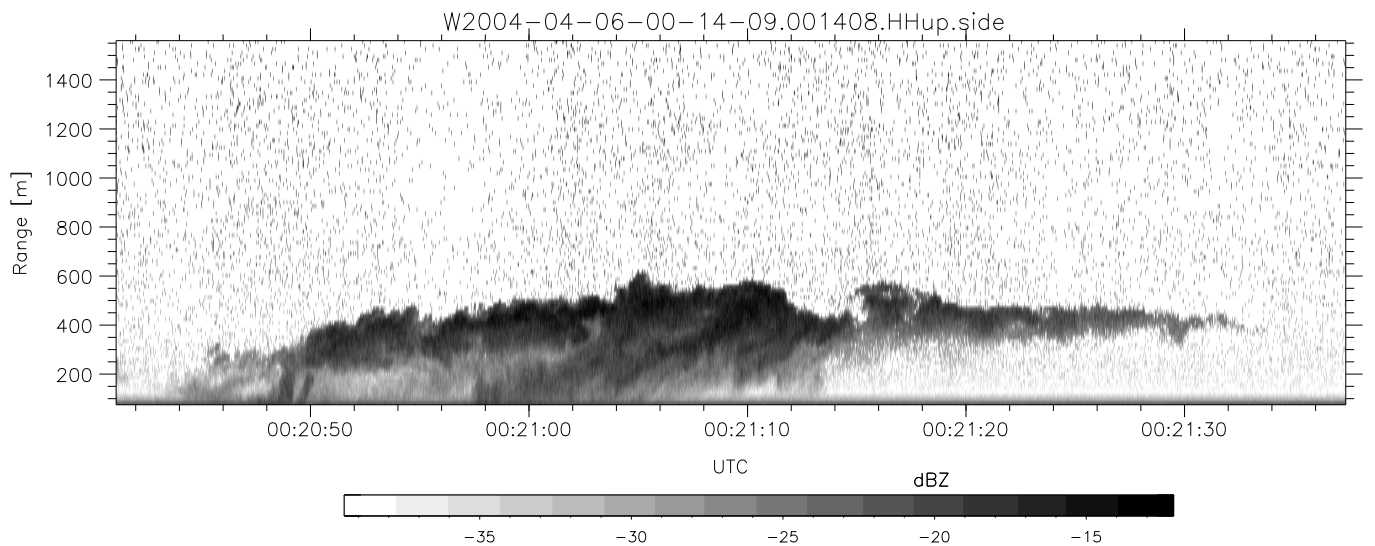
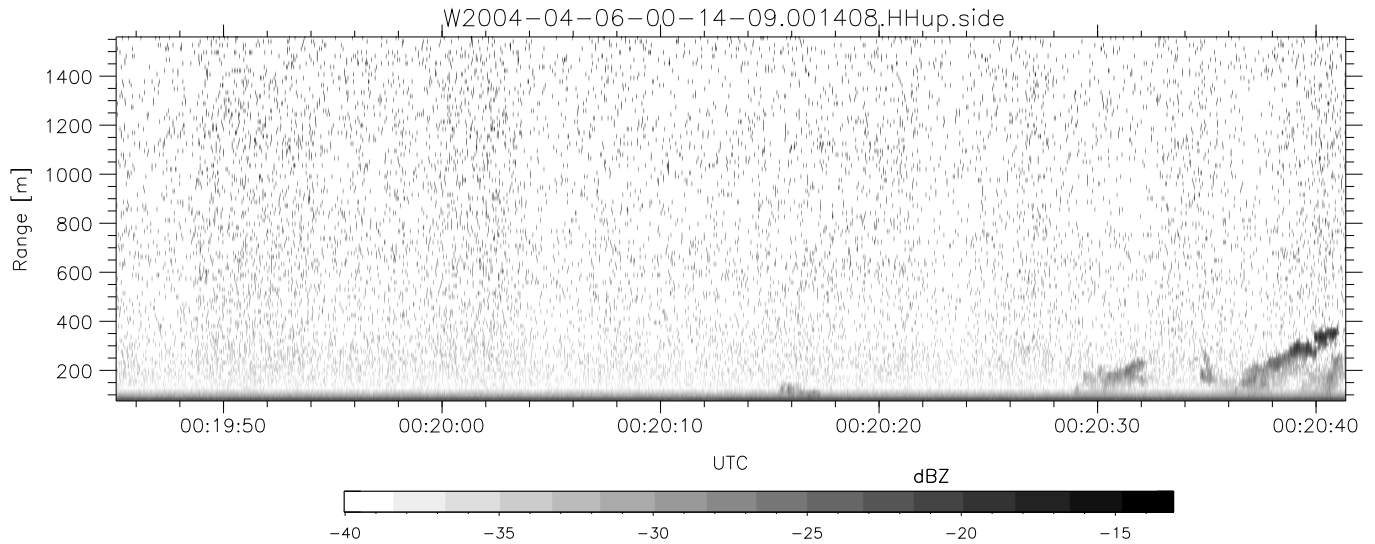
	Min	Max	Mean	Std	Varc%
hhN (dB)	-66.70	-63.25	-64.90	-75.01	9.8
vvN (dB)	-66.78	-63.43	-64.92	-74.98	9.8
hhL (dB)	0.61	3.37	1.62	-9.21	8.3
vvL (dB)	5.65	6.00	6.00	-19.95	0.3
ppN (m/s)	-12.53	12.69	-0.04	4.14	
ppT (m/s)	-99.01	100.27	-0.32	32.68	
hh/vv (dB)	NaN	43.44	NaN	35.12	-102
vh/hh (dB)	-99	-99	-99	-99	-99
hv/vv (dB)	NaN	-34.19	-59.59	-46.79	1901
hnjmp (dB)				0.14	
vnjmp (dB)				0.15	



CIFEX 2004 Data (cal/250ns+2.5/100ns-3.5/500ns: 53.0,50.0)

W2004-04-06-00-14-09 - PPMAG4, IRIG:1/0/2
 UTC: 00:14:08.99 to 00:47:25.40, Dur: 1997s
 TimeLngth: 1996.42s, TimeInt: 28ms (35.5pps)
 TimeCor=-13.0s, PPS(min,max,med): 35,36,35
 Timeint/DSPdiff(mn,min,mx):28,28,28/28,28,28
 Prof: 439 to 71215, NumProf(r/t): 17571/70776
 ProcTime/Recs: 00:14:08-00:22:24/0-17570
 ADacqtime: 25ms; DRate: 198.4KB/s; Flags: 0, 0, 0
 Pulse: 275ns, IFfilt: 5.0MHz; ppPol: HH HV VV
 TxPol: HHVV, PRF: 20 10 20 10 kHz, NoiseFlg:2,2
 Range: Delay 75m, Spacing 15m, Gates 100
 Ave. Pulses: 84, Rng/Prof Aspect@90m/s: 5.9

	Min	Max	Mean	Std	Varc%
hhN (dB)	-66.70	-63.25	-64.90	-75.01	9.8
vvN (dB)	-66.78	-63.43	-64.92	-74.98	9.8
hhL (dB)	0.61	3.37	1.62	-9.21	8.3
vvL (dB)	5.65	6.00	6.00	-19.95	0.3
ppN (m/s)	-12.53	12.69	-0.04	4.14	
ppT (m/s)	-99.01	100.27	-0.32	32.68	
hh/vv (dB)	NaN	43.44	NaN	35.12	-102
vh/hh (dB)	-99	-99	-99	-99	-99
hv/vv (dB)	NaN	-34.19	-59.59	-46.79	1901
hn_jmp (dB)				0.14	
vn_jmp (dB)				0.15	



CIFEX 2004 Data (cal/250ns+2.5/100ns-3.5/500ns: 53.0,50.0)

W2004-04-06-00-14-09 - PPMAG4, IRIG:1/0/2
 UTC: 00:14:08.99 to 00:47:25.40, Dur: 1997s
 TimeLngth: 1996.42s, TimeInt: 28ms (35.5pps)
 TimeCor=-13.0s, PPS(min,max,med): 35,36,35
 Timeint/DSPdiff(mn,min,mx):28,28,28/28,28,28
 Prof: 439 to 71215, NumProf(r/t): 17571/70776
 ProcTime/Recs: 00:14:08-00:22:24/0-17570
 ADacqtime: 25ms; DRate: 198.4KB/s; Flags: 0, 0, 0
 Pulse: 275ns, IFfilt: 5.0MHz; ppPol: HH HV VV
 TxPol: HHVV, PRF: 20 10 20 10 kHz, Noiseflg:2,2
 Range: Delay 75m, Spacing 15m, Gates 100
 Ave. Pulses: 84, Rng/Prof Aspect@90m/s: 5.9

	Min	Max	Mean	Std	Varc%
hhN(dB)	-66.70	-63.25	-64.90	-75.01	9.8
vvN(dB)	-66.78	-63.43	-64.92	-74.98	9.8
hhL(dB)	0.61	3.37	1.62	-9.21	8.3
vvL(dB)	5.65	6.00	6.00	-19.95	0.3
ppN(m/s)	-12.53	12.69	-0.04	4.14	
ppT(m/s)	-99.01	100.27	-0.32	32.68	
hh/vv(dB)	NaN	43.44	NaN	35.12	-102
vh/hh(dB)	-99	-99	-99	-99	-99
hv/vv(dB)	NaN	-34.19	-59.59	-46.79	1901
hnjmp(dB)				0.14	
vnjmp(dB)				0.15	