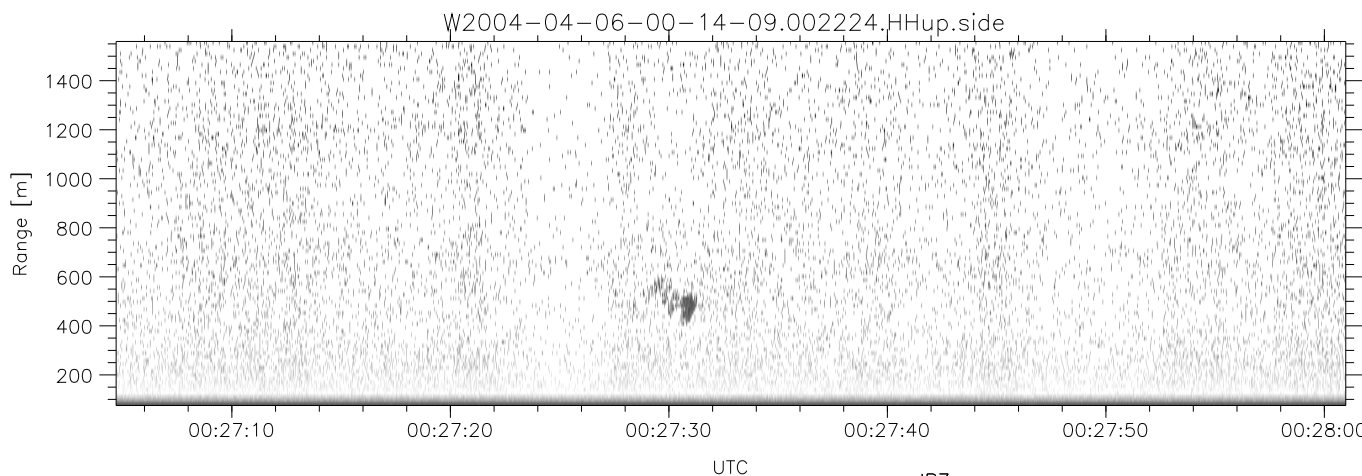
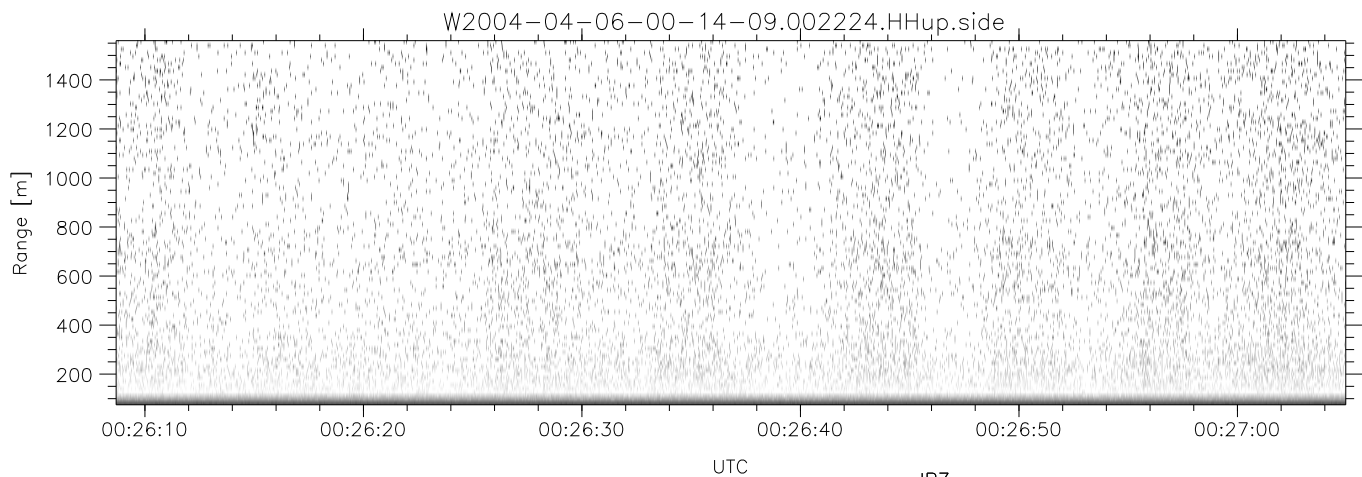
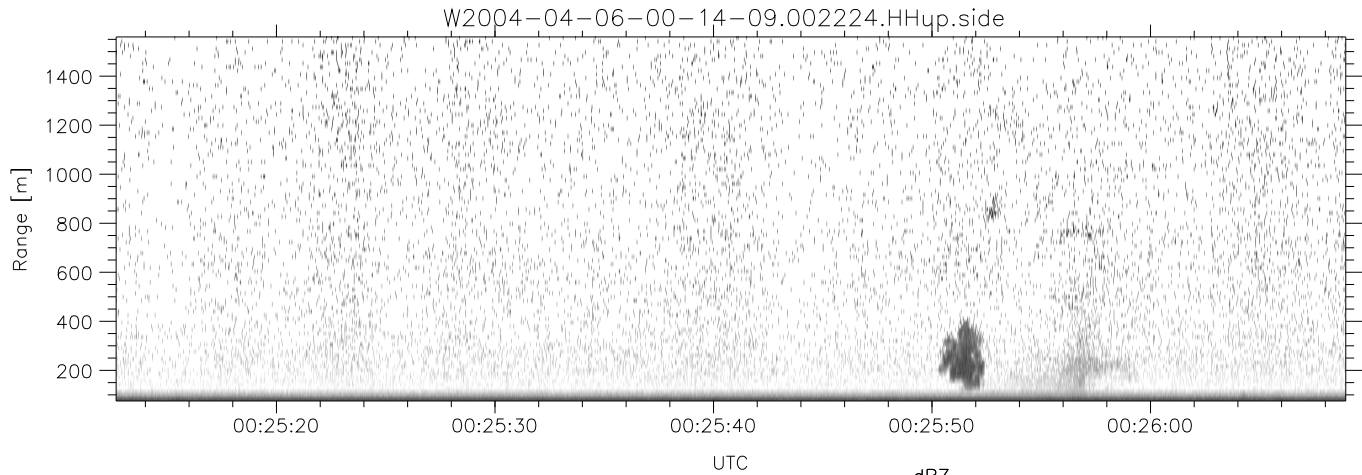


CIFEX 2004 Data (cal/250ns+2.5/100ns-3.5/500ns: 53.0,50.0)

W2004-04-06-00-14-09 - PPMAG4, IRIG:1/0/2
 UTC: 00:14:08.99 to 00:47:25.40, Dur: 1997s
 TimeLngth: 1996.49s, TimeInt: 28ms (35.4pps)
 TimeCor=-13.0s, PPS(min,max,med): 35,36,35
 Timeint/DSPdiff(mn,min,mx):28,28,29/28,28,28
 Prof: 439 to 71215, NumProf(r/t): 17571/70776
 ProcTime/Recs: 00:22:24-00:30:40/17571-35141
 ADacqtime: 25ms; DRate: 198.4KB/s; Flags: 0, 0, 0
 Pulse: 275ns, IFfilt: 5.0MHz; ppPol: HH HV VV
 TxPol: HHVV, PRF: 20 10 20 10 kHz, NoiseFlg:4,1
 Range: Delay 75m, Spacing 15m, Gates 100
 Ave. Pulses: 84, Rng/Prof Aspect@90m/s: 5.9

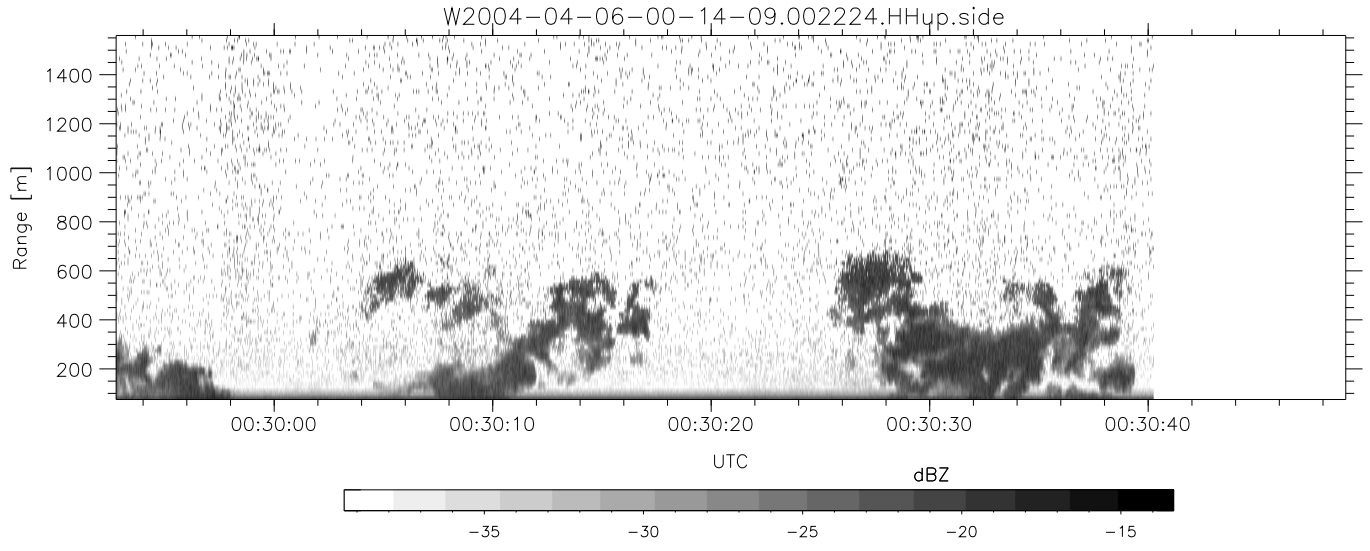
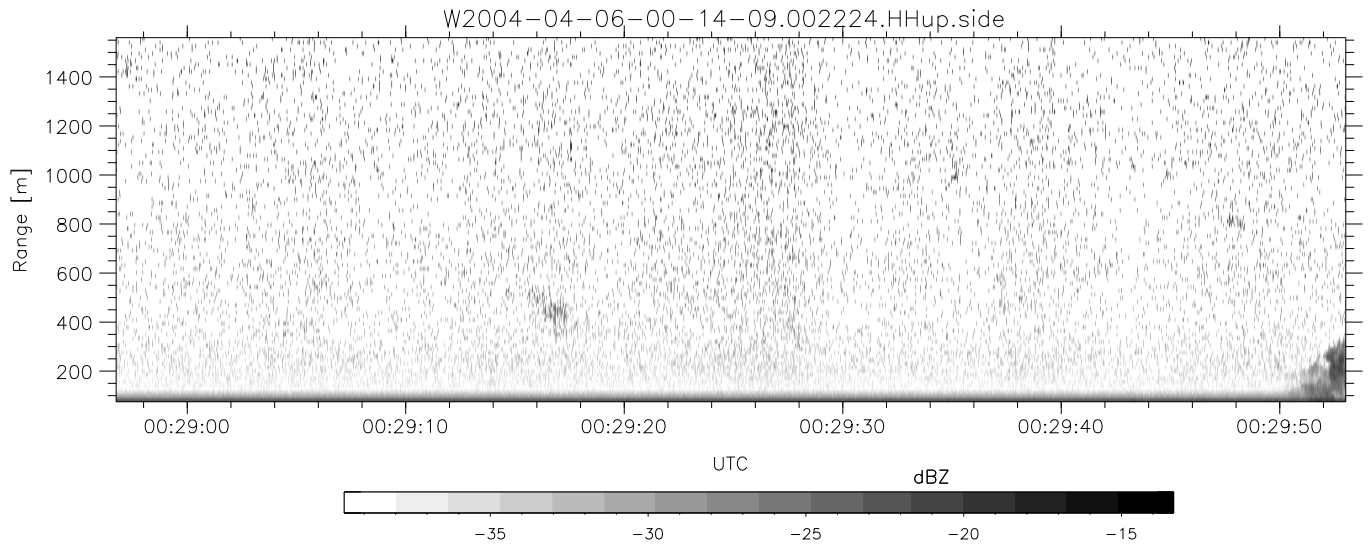
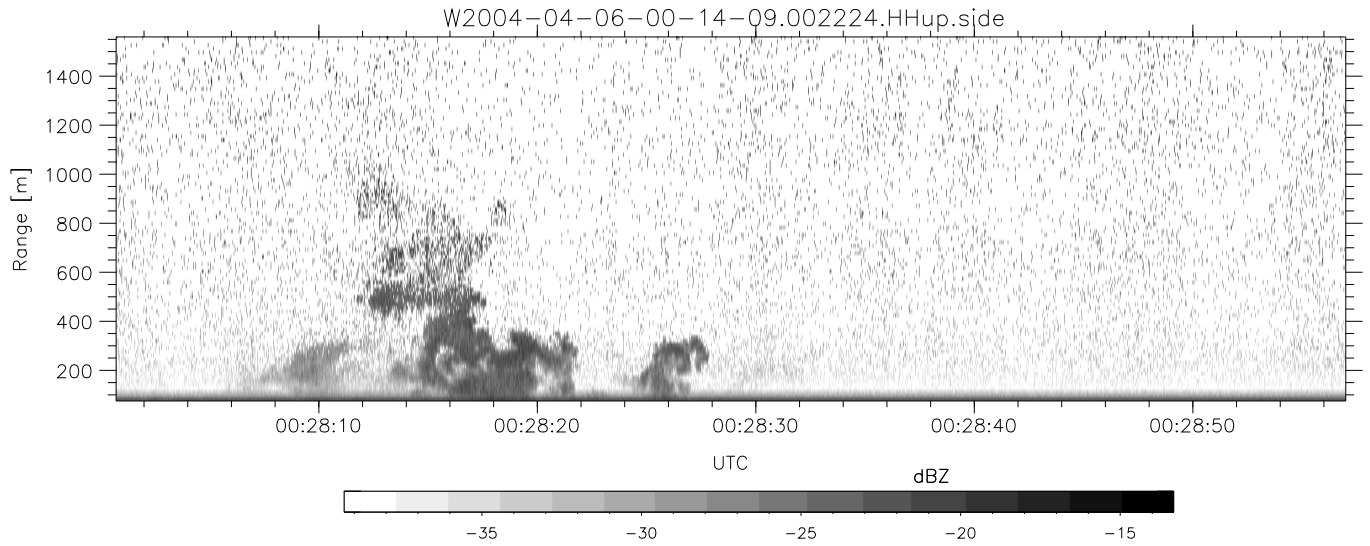
	Min	Max	Mean	Std	Varc%
hhN(dB)	-66.39	-63.14	-64.81	-74.91	9.8
vvN(dB)	-66.74	-63.37	-64.89	-74.99	9.8
hhL(dB)	0.87	3.23	1.94	-8.92	8.2
vvL(dB)	5.97	6.00	6.00	-36.40	0.0
ppN(m/s)	-12.25	12.69	-0.02	4.12	
ppT(m/s)	-96.81	100.22	-0.13	32.58	
hh/vv(dB)	NaN	39.84	11.43	23.60	1648
vh/hh(dB)	-99	-99	-99	-99	-99
hv/vv(dB)	NaN	-33.82	-58.38	-45.79	1816
hnjmp(dB)			-0.14		
vnjmp(dB)			-0.15		



CIFEX 2004 Data (cal/250ns+2.5/100ns-3.5/500ns: 53.0,50.0)

W2004-04-06-00-14-09 - PPMAG4, IRIG:1/0/2
 UTC: 00:14:08.99 to 00:47:25.40, Dur: 1997s
 TimeLngth: 1996.49s, TimeInt: 28ms (35.4pps)
 TimeCor=-13.0s, PPS(min,max,med): 35,36,35
 Timeint/DSPdiff(mn,min,mx):28,28,29/28,28,28
 Prof: 439 to 71215, NumProf(r/t): 17571/70776
 ProcTime/Recs: 00:22:24-00:30:40/17571-35141
 ADacqtime: 25ms; DRate: 198.4KB/s; Flags: 0, 0, 0
 Pulse: 275ns, IFilt: 5.0MHz; ppPol: HH HV VV
 TxPol: HHVV, PRF: 20 10 20 10 kHz, NoiseFlg:4,1
 Range: Delay 75m, Spacing 15m, Gates 100
 Ave. Pulses: 84, Rng/Prof Aspect@90m/s: 5.9

	Min	Max	Mean	Std	Varc%
hhN(dB)	-66.39	-63.14	-64.81	-74.91	9.8
vvN(dB)	-66.74	-63.37	-64.89	-74.99	9.8
hhL(dB)	0.87	3.23	1.94	-8.92	8.2
vvL(dB)	5.97	6.00	6.00	-36.40	0.0
ppN(m/s)	-12.25	12.69	-0.02	4.12	
ppT(m/s)	-96.81	100.22	-0.13	32.58	
hh/vv(dB)	NaN	39.84	11.43	23.60	1648
vh/hh(dB)	-99	-99	-99	-99	-99
hv/vv(dB)	NaN	-33.82	-58.38	-45.79	1816
hnjmp(dB)			-0.14		
vnjmp(dB)			-0.15		



CIFEX 2004 Data (cal/250ns+2.5/100ns-3.5/500ns: 53.0,50.0)

W2004-04-06-00-14-09 - PPMAG4, IRIG:1/0/2
 UTC: 00:14:08.99 to 00:47:25.40, Dur: 1997s
 TimeLngth: 1996.49s, TimeInt: 28ms (35.4pps)
 TimeCor=-13.0s, PPS(min,max,med): 35,36,35
 Timeint/DSPdiff(mn,min,mx):28,28,29/28,28,28
 Prof: 439 to 71215, NumProf(r/t): 17571/70776
 ProcTime/Recs: 00:22:24-00:30:40/17571-35141
 ADacqtime: 25ms; DRate: 198.4KB/s; Flags: 0, 0, 0
 Pulse: 275ns, IFilt: 5.0MHz; ppPol: HH HV VV
 TxPol: HHVV, PRF: 20 10 20 10 kHz, NoiseFlg:4,1
 Range: Delay 75m, Spacing 15m, Gates 100
 Ave. Pulses: 84, Rng/Prof Aspect@90m/s: 5.9

	Min	Max	Mean	Std	Varc%
hhN(dB)	-66.39	-63.14	-64.81	-74.91	9.8
vvN(dB)	-66.74	-63.37	-64.89	-74.99	9.8
hhL(dB)	0.87	3.23	1.94	-8.92	8.2
vvL(dB)	5.97	6.00	6.00	-36.40	0.0
ppN(m/s)	-12.25	12.69	-0.02	4.12	
ppT(m/s)	-96.81	100.22	-0.13	32.58	
hh/vv(dB)	NaN	39.84	11.43	23.60	1648
vh/hh(dB)	-99	-99	-99	-99	-99
hv/vv(dB)	NaN	-33.82	-58.38	-45.79	1816
hnjmp(dB)				-0.14	
vnjmp(dB)				-0.15	