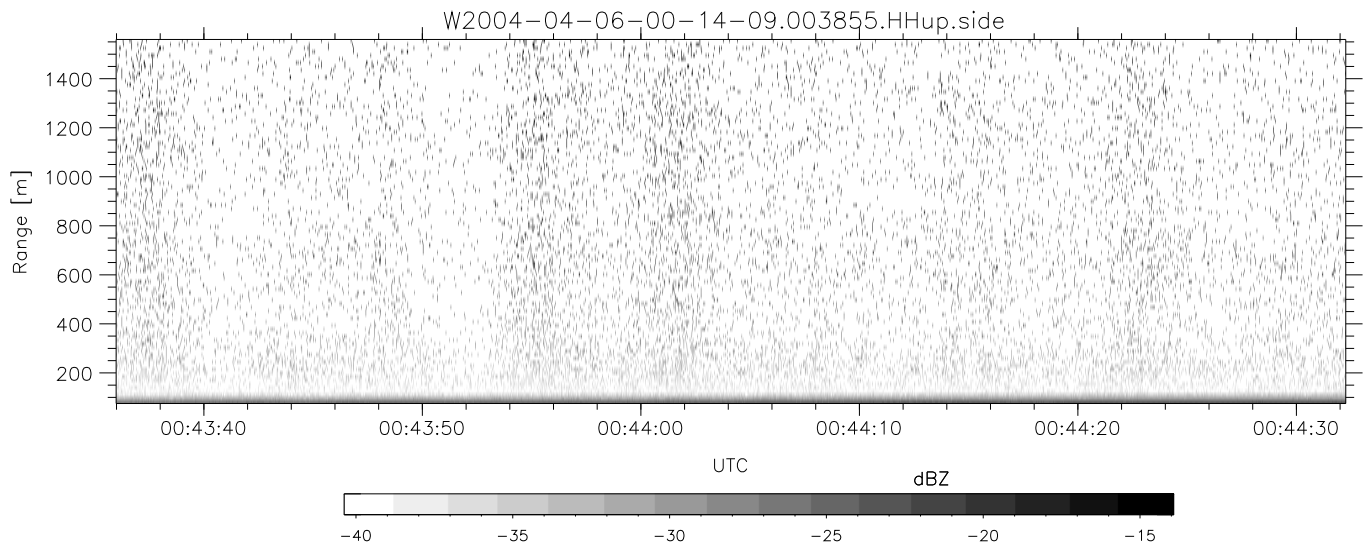
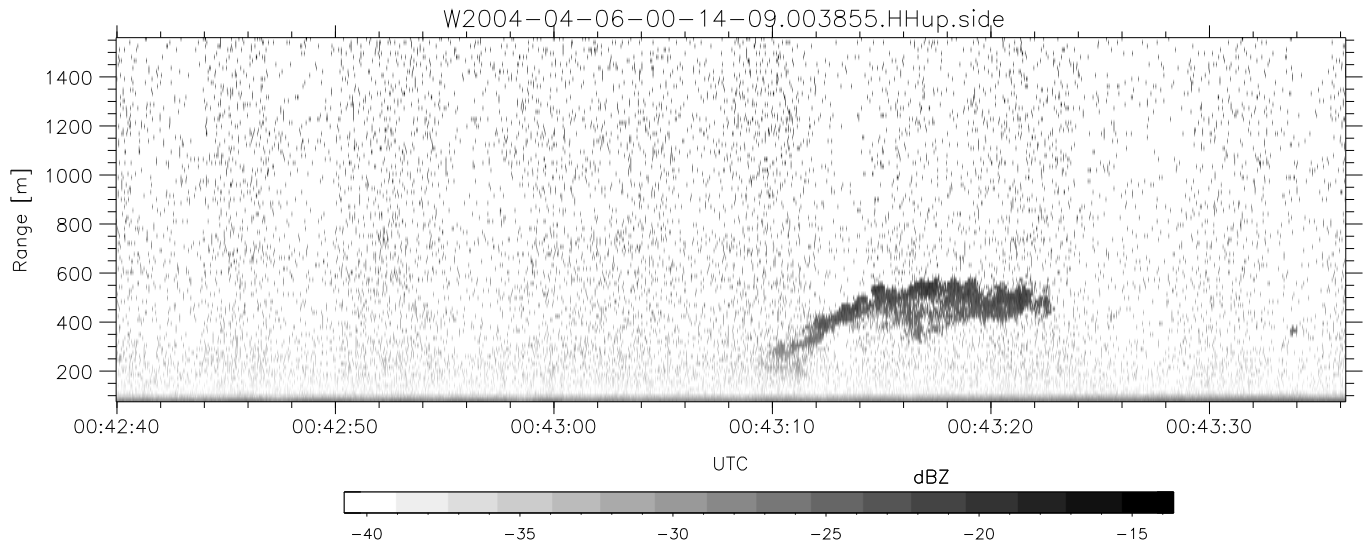
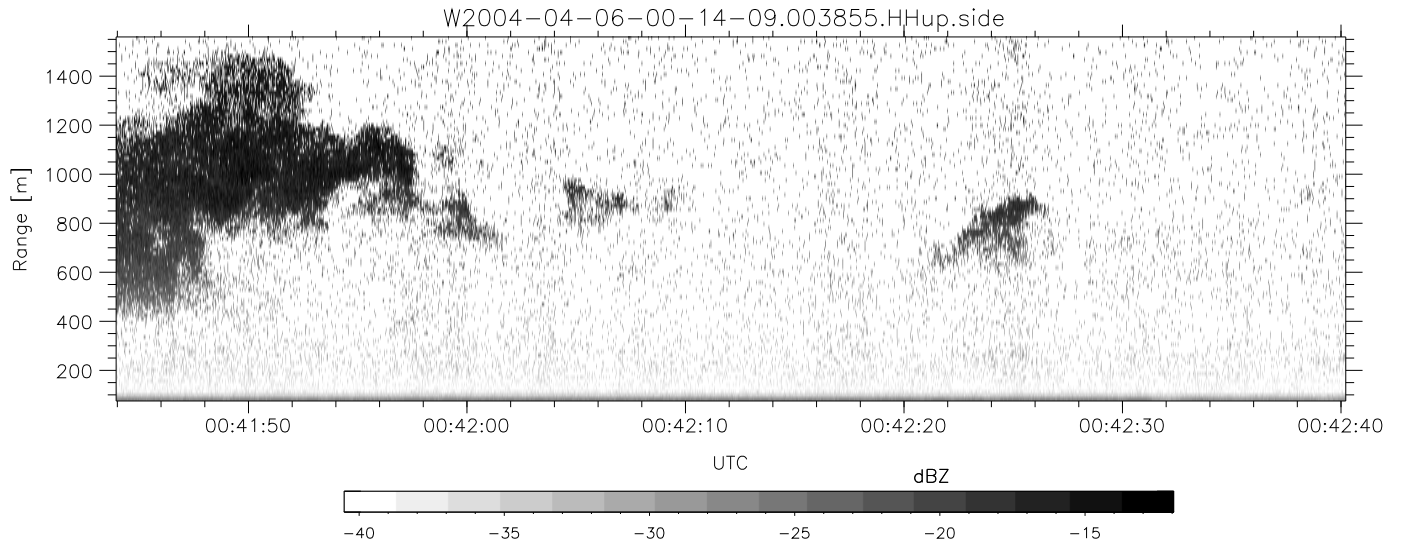


CIFEX 2004 Data (cal/250ns+2.5/100ns-3.5/500ns: 53.0,50.0)

W2004-04-06-00-14-09 - PPMAG4, IRIG:1/0/2
 UTC: 00:14:08.99 to 00:47:25.40, Dur: 1997s
 TimeLngth: 1996.42s, TimeInt: 28ms (35.5pps)
 TimeCor=-13.0s, PPS(min,max,med): 35,36,35
 Timeint/DSPdiff(mn,min,mx):28,28,28/28,28,28
 Prof: 439 to 71215, NumProf(r/t): 17571/70776
 ProcTime/Recs: 00:38:55-00:47:11/52713-70283
 ADacqtime: 25ms; DRate: 198.4KB/s; Flags: 0, 0, 0
 Pulse: 275ns, IFfilt: 5.0MHz; ppPol: HH HV VV
 TxPol: HHVV, PRF: 20 10 20 10 kHz, NoiseFlg:4,1
 Range: Delay 75m, Spacing 15m, Gates 100
 Ave. Pulses: 84, Rng/Prof Aspect@90m/s: 5.9

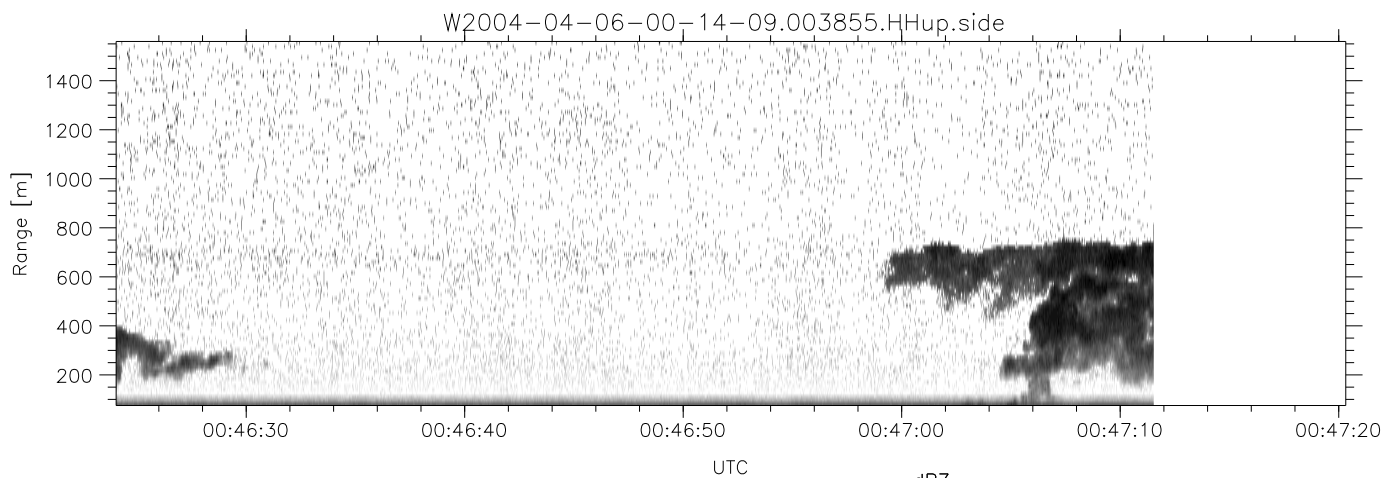
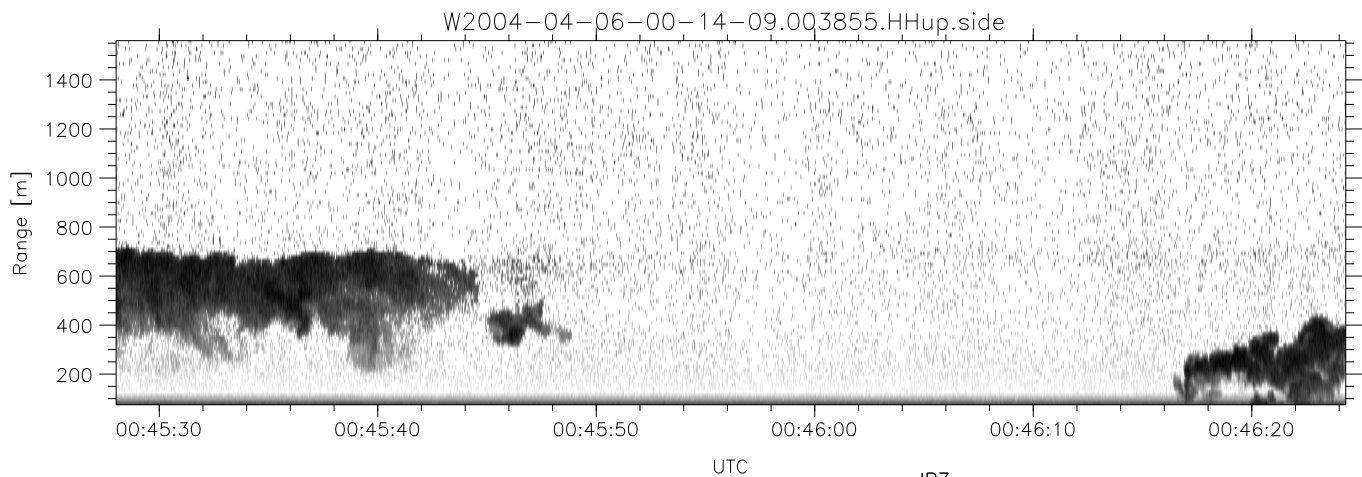
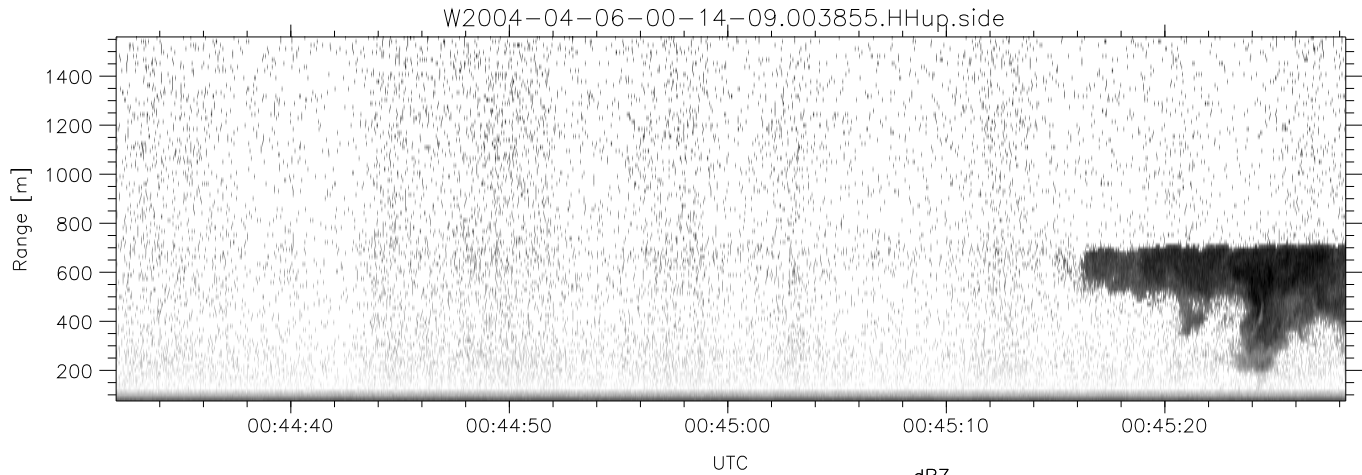
	Min	Max	Mean	Std	Varc%
hhN (dB)	-66.74	-63.37	-64.92	-75.04	9.7
vvN (dB)	-66.56	-63.30	-64.90	-74.97	9.8
hhL (dB)	-7.46	3.53	-0.39	-2.32	64.0
vvL (dB)	5.61	6.00	6.00	-23.87	0.1
ppN (m/s)	-12.31	12.78	-0.03	4.16	
ppT (m/s)	-97.23	100.96	-0.21	32.88	
hh/vv (dB)	NaN	43.62	14.34	28.00	2318
vh/hh (dB)	-99	-99	-99	-99	-99
hv/vv (dB)	NaN	-34.50	-57.07	-46.01	1274
hn_jmp (dB)			-0.15		
vn_jmp (dB)			-0.14		



CIFEX 2004 Data (cal/250ns+2.5/100ns-3.5/500ns: 53.0,50.0)

W2004-04-06-00-14-09 - PPMAG4, IRIG:1/0/2
 UTC: 00:14:08.99 to 00:47:25.40, Dur: 1997s
 TimeLngth: 1996.42s, TimeInt: 28ms (35.5pps)
 TimeCor=-13.0s, PPS(min,max,med): 35,36,35
 Timeint/DSPdiff(mn,min,mx):28,28,28/28,28,28
 Prof: 439 to 71215, NumProf(r/t): 17571/70776
 ProcTime/Recs: 00:38:55-00:47:11/52713-70283
 ADacqtime: 25ms; DRate: 198.4KB/s; Flags: 0, 0, 0
 Pulse: 275ns, IFilt: 5.0MHz; ppPol: HH HV VV
 TxPol: HHVV, PRF: 20 10 20 10 kHz, NoiseFlg:4,1
 Range: Delay 75m, Spacing 15m, Gates 100
 Ave. Pulses: 84, Rng/Prof Aspect@90m/s: 5.9

	Min	Max	Mean	Std	Varc%
hhN (dB)	-66.74	-63.37	-64.92	-75.04	9.7
vvN (dB)	-66.56	-63.30	-64.90	-74.97	9.8
hhL (dB)	-7.46	3.53	-0.39	-2.32	64.0
vvL (dB)	5.61	6.00	6.00	-23.87	0.1
ppN (m/s)	-12.31	12.78	-0.03	4.16	
ppT (m/s)	-97.23	100.96	-0.21	32.88	
hh/vv (dB)	NaN	43.62	14.34	28.00	2318
vh/hh (dB)	-99	-99	-99	-99	-99
hv/vv (dB)	NaN	-34.50	-57.07	-46.01	1274
hnjmp (dB)			-0.15		
vnjmp (dB)			-0.14		



CIFEX 2004 Data (cal/250ns+2.5/100ns-3.5/500ns: 53.0,50.0)

W2004-04-06-00-14-09 - PPMAG4, IRIG:1/0/2
 UTC: 00:14:08.99 to 00:47:25.40, Dur: 1997s
 TimeLngth: 1996.42s, TimeInt: 28ms (35.5pps)
 TimeCor=-13.0s, PPS(min,max,med): 35,36,35
 Timeint/DSPdiff(mn,min,mx):28,28,28/28,28,28
 Prof: 439 to 71215, NumProf(r/t): 17571/70776
 ProcTime/Recs: 00:38:55-00:47:11/52713-70283
 ADacqtime: 25ms; DRate: 198.4KB/s; Flags: 0, 0, 0
 Pulse: 275ns, IFfilt: 5.0MHz; ppPol: HH HV VV
 TxPol: HHVV, PRF: 20 10 20 10 kHz, NoiseFlg:4,1
 Range: Delay 75m, Spacing 15m, Gates 100
 Ave. Pulses: 84, Rng/Prof Aspect@90m/s: 5.9

	Min	Max	Mean	Std	Varc%
hhN(dB)	-66.74	-63.37	-64.92	-75.04	9.7
vvN(dB)	-66.56	-63.30	-64.90	-74.97	9.8
hhL(dB)	-7.46	3.53	-0.39	-2.32	64.0
vvL(dB)	5.61	6.00	6.00	-23.87	0.1
ppN(m/s)	-12.31	12.78	-0.03	4.16	
ppT(m/s)	-97.23	100.96	-0.21	32.88	
hh/vv(dB)	NaN	43.62	14.34	28.00	2318
vh/hh(dB)	-99	-99	-99	-99	-99
hv/vv(dB)	NaN	-34.50	-57.07	-46.01	1274
hnjmp(dB)			-0.15		
vnjmp(dB)			-0.14		