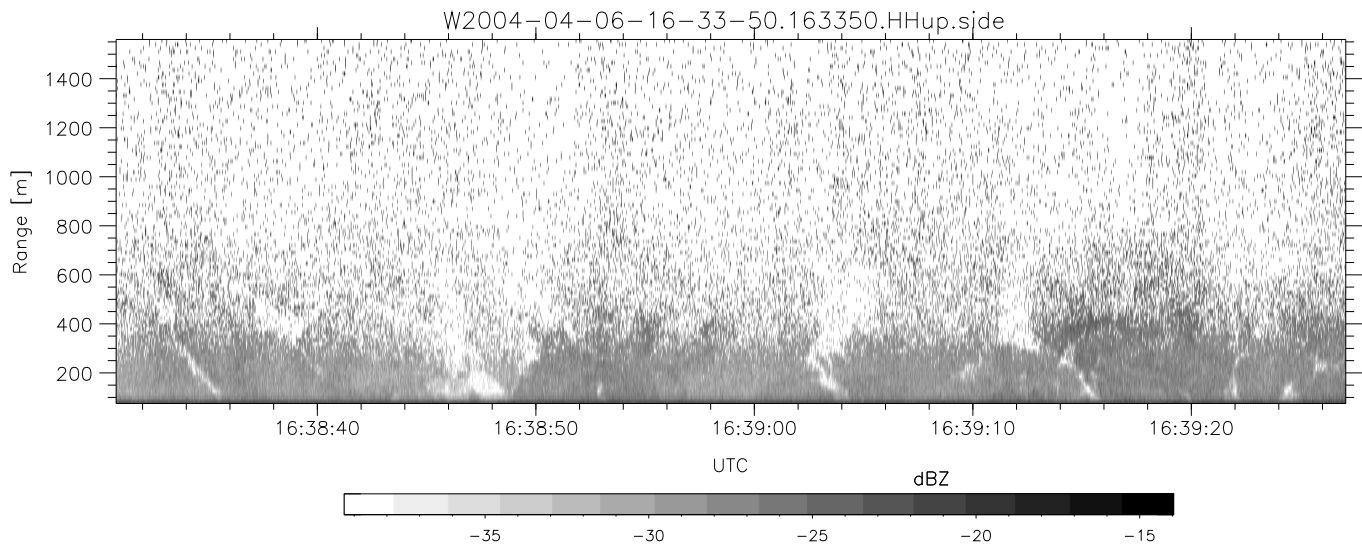
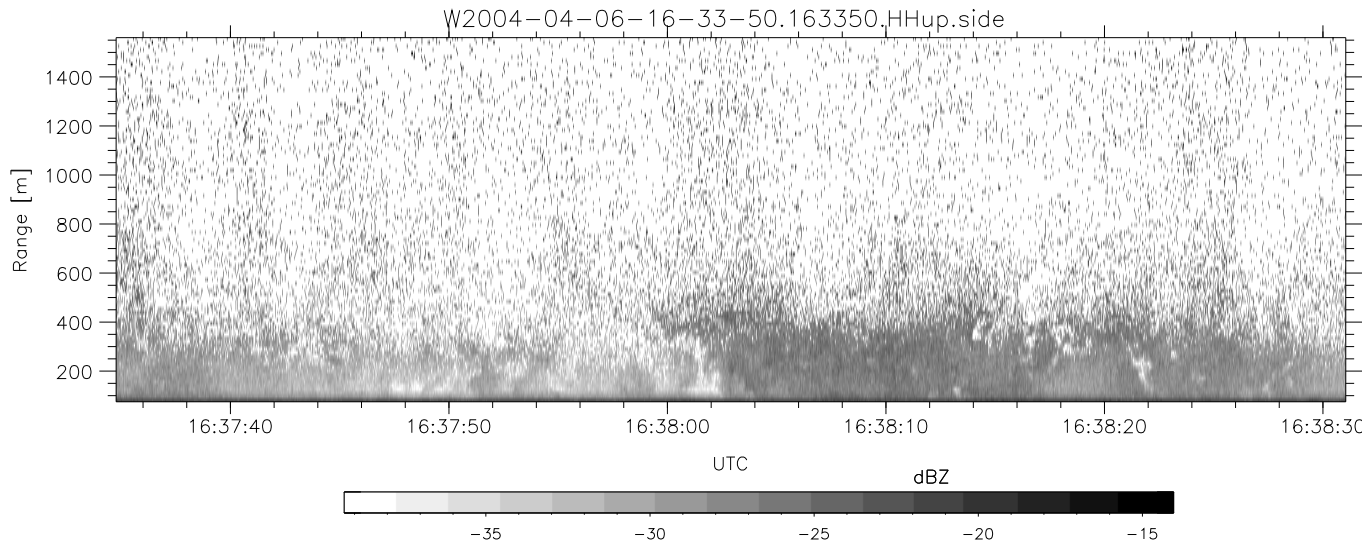
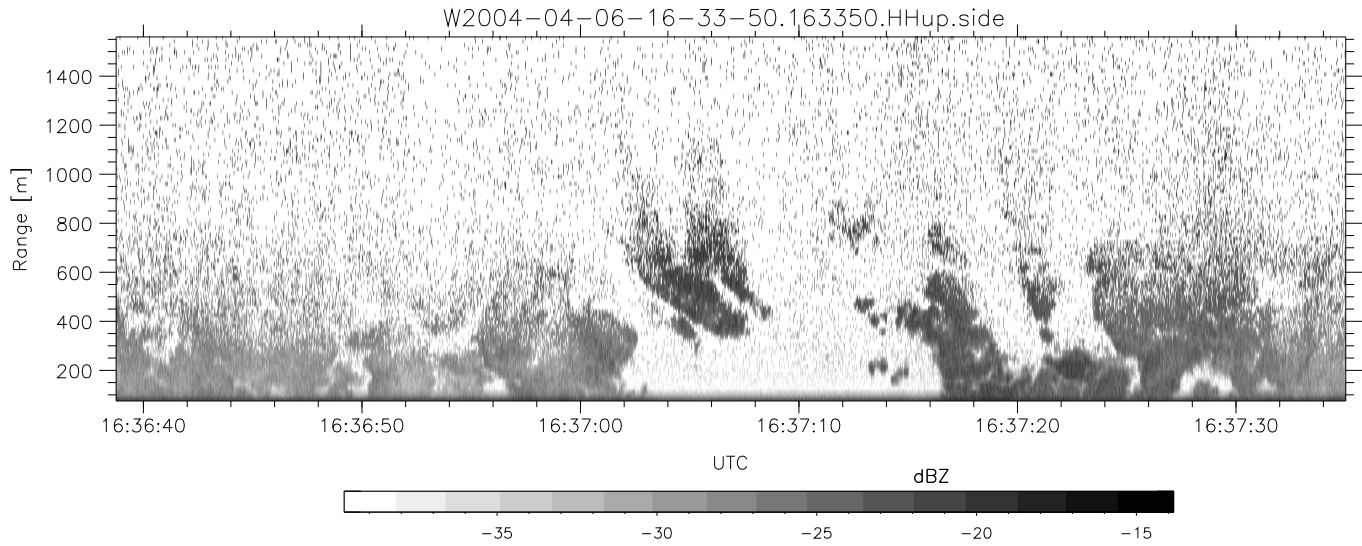


CIFEX 2004 Data (cal/250ns+2.5/100ns-3.5/500ns: 53.0,50.0)

W2004-04-06-16-33-50 - PPMAG4, IRIG:1/0/6
 UTC: 16:33:50.71 to 16:42:26.47, Dur: 516s
 TimeLngth: 515.77s, TimeInt: 28ms (35.4pps)
 TimeCor=-13.0s, PPS(min,max,med): 35,36,35
 Timeint/DSPdiff(mn,min,mx):28,28,29/28,28,28
 Prof: 383 to 18668, NumProf(r/t): 18285/18285
 ADacqtime: 25ms; DRate: 198.5KB/s; Flags: 0, 0, 0
 Pulse: 275ns, IFfilt: 5.0MHz; ppPol: HH HV VV
 TxPol: HHVV, PRF: 20 10 20 10 kHz, NoiseFlg:2,4
 Range: Delay 75m, Spacing 15m, Gates 100
 Ave. Pulses: 84, Rng/Prof Aspect@90m/s: 5.9

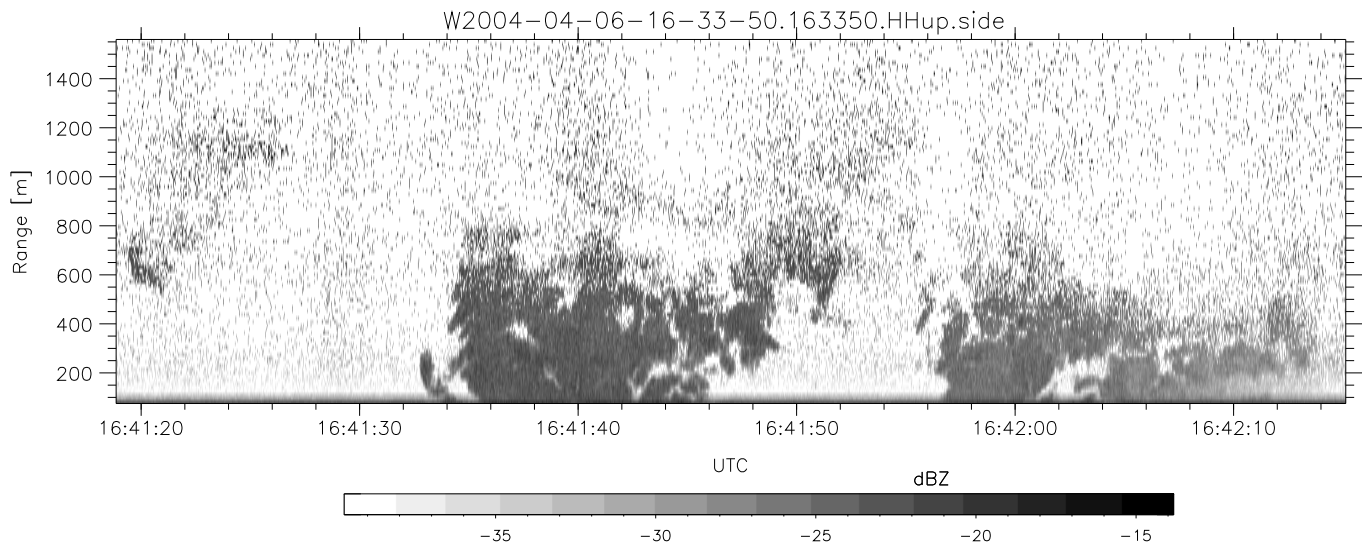
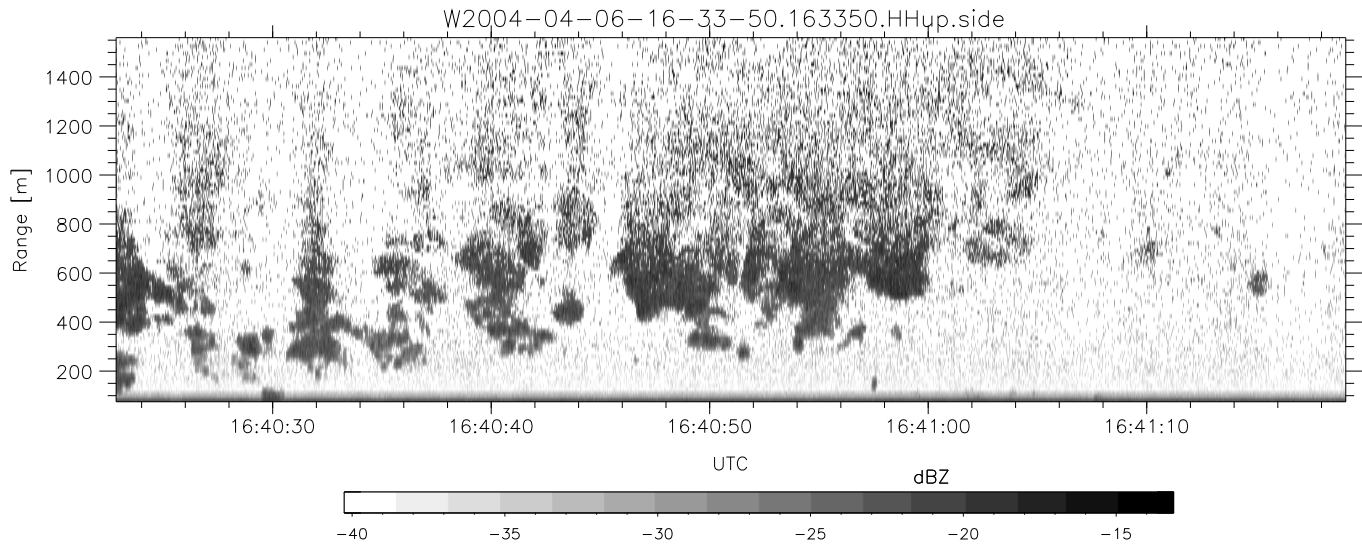
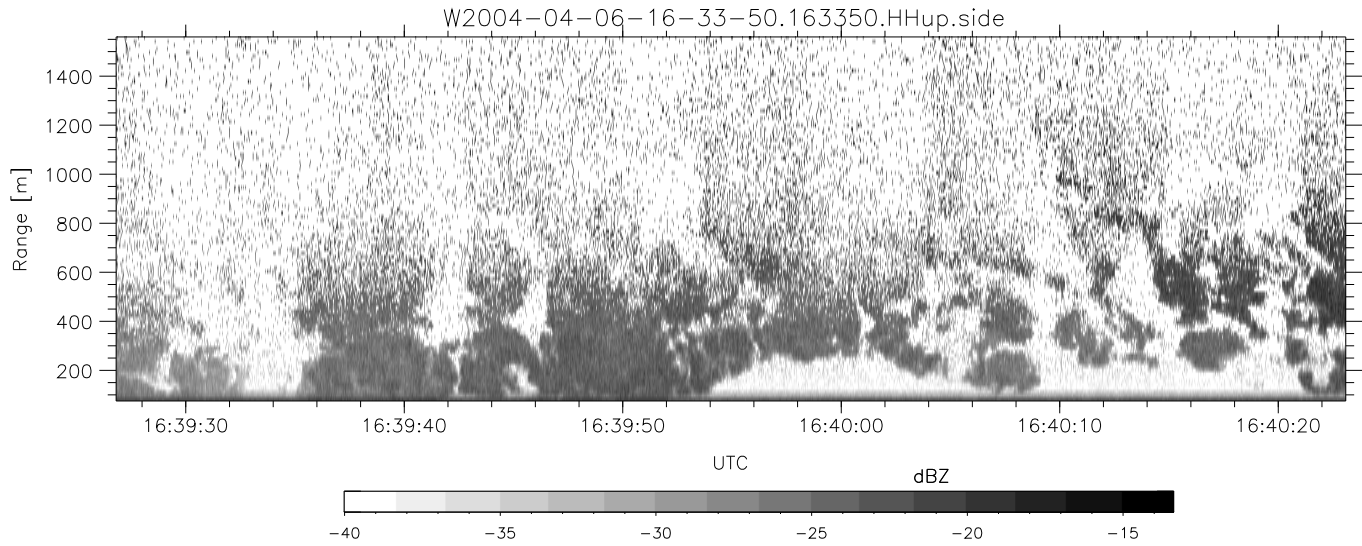
	Min	Max	Mean	Std	Varc%
hhN (dB)	-67.07	-63.69	-65.27	-75.38	9.8
vvN (dB)	-67.07	-63.58	-65.38	-75.43	9.9
hhL (dB)	-1.03	3.05	1.50	-7.68	12.1
vvL (dB)	3.58	6.00	5.68	-5.80	7.1
ppN (m/s)	-12.80	12.22	-0.05	4.14	
ppT (m/s)	-101.0	96.56	-0.37	32.69	
hh/vv (dB)	NaN	36.30	9.99	19.82	96.2
vh/hh (dB)	-99	-99	-99	-99	-99
hv/vv (dB)	NaN	-34.33	-58.64	-46.45	1653
hnjmp (dB)			0.15		
vnjmp (dB)			0.15		



CIFEX 2004 Data (cal/250ns+2.5/100ns-3.5/500ns: 53.0,50.0)

W2004-04-06-16-33-50 - PPMAG4, IRIG:1/0/6
 UTC: 16:33:50.71 to 16:42:26.47, Dur: 516s
 TimeLngth: 515.77s, TimeInt: 28ms (35.4pps)
 TimeCor=-13.0s, PPS(min,max,med): 35,36,35
 Timeint/DSPdiff(mn,min,mx):28,28,29/28,28,28
 Prof: 383 to 18668, NumProf(r/t): 18285/18285
 ADacqtime: 25ms; DRate: 198.5kB/s; Flags: 0, 0, 0
 Pulse: 275ns, IFfilt: 5.0MHz; ppPol: HH HV VV
 TxPol: HHVV, PRF: 20 10 20 10 kHz, NoiseFlg:2,4
 Range: Delay 75m, Spacing 15m, Gates 100
 Ave. Pulses: 84, Rng/Prof Aspect@90m/s: 5.9

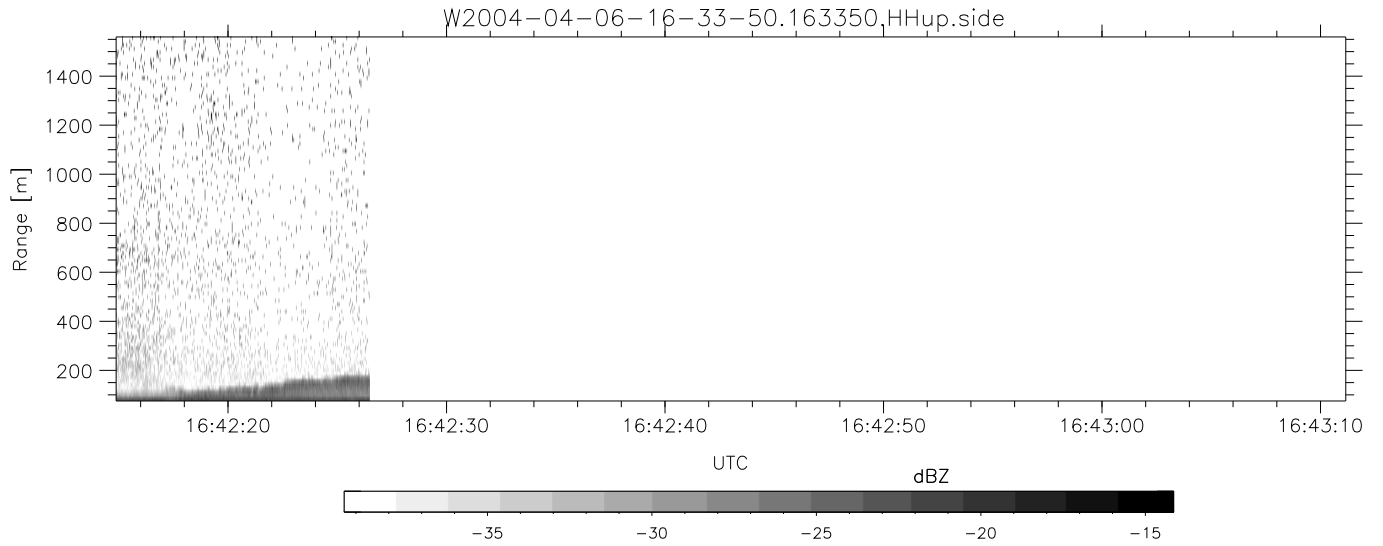
	Min	Max	Mean	Std	Varc%
hhN(dB)	-67.07	-63.69	-65.27	-75.38	9.8
vvN(dB)	-67.07	-63.58	-65.38	-75.43	9.9
hhL(dB)	-1.03	3.05	1.50	-7.68	12.1
vvL(dB)	3.58	6.00	5.68	-5.80	7.1
ppN(m/s)	-12.80	12.22	-0.05	4.14	
ppT(m/s)	-101.0	96.56	-0.37	32.69	
hh/vv(dB)	NaN	36.30	9.99	19.82	96.2
vh/hh(dB)	-99	-99	-99	-99	-99
hv/vv(dB)	NaN	-34.33	-58.64	-46.45	1653
hnjmp(dB)			0.15		
vnjmp(dB)			0.15		



CIFEX 2004 Data (cal/250ns+2.5/100ns-3.5/500ns: 53.0,50.0)

W2004-04-06-16-33-50 - PPMAG4, IRIG:1/0/6
 UTC: 16:33:50.71 to 16:42:26.47, Dur: 516s
 TimeLngth: 515.77s, TimeInt: 28ms (35.4pps)
 TimeCor=-13.0s, PPS(min,max,med): 35,36,35
 Timeint/DSPdiff(mn,min,mx):28,28,29/28,28,28
 Prof: 383 to 18668, NumProf(r/t): 18285/18285
 ADacqtime: 25ms; DRate: 198.5kB/s; Flags: 0, 0, 0
 Pulse: 275ns, IFfilt: 5.0MHz; ppPol: HH HV VV
 TxPol: HHVV, PRF: 20 10 20 10 kHz, NoiseFlg:2,4
 Range: Delay 75m, Spacing 15m, Gates 100
 Ave. Pulses: 84, Rng/Prof Aspect@90m/s: 5.9

	Min	Max	Mean	Std	Varc%
hhN(dB)	-67.07	-63.69	-65.27	-75.38	9.8
vvN(dB)	-67.07	-63.58	-65.38	-75.43	9.9
hhL(dB)	-1.03	3.05	1.50	-7.68	12.1
vvL(dB)	3.58	6.00	5.68	-5.80	7.1
ppN(m/s)	-12.80	12.22	-0.05	4.14	
ppT(m/s)	-101.0	96.56	-0.37	32.69	
hh/vv(dB)	NaN	36.30	9.99	19.82	96.2
vh/hh(dB)	-99	-99	-99	-99	-99
hv/vv(dB)	NaN	-34.33	-58.64	-46.45	1653
hn_jmp(dB)			0.15		
vn_jmp(dB)			0.15		



CIFEX 2004 Data (cal/250ns+2.5/100ns-3.5/500ns: 53.0,50.0)

W2004-04-06-16-33-50 - PPMAG4, IRIG:1/0/6
 UTC: 16:33:50.71 to 16:42:26.47, Dur: 516s
 TimeLngth: 515.77s, TimeInt: 28ms (35.4pps)
 TimeCor=-13.0s, PPS(min,max,med): 35,36,35
 Timeint/DSPdiff(mn,min,mx):28,28,29/28,28,28
 Prof: 383 to 18668, NumProf(r/t): 18285/18285
 ADacqtime: 25ms; DRate: 198.5KB/s; Flags: 0, 0, 0
 Pulse: 275ns, IFfilt: 5.0MHz; ppPol: HH HV VV
 TxPol: HHVV, PRF: 20 10 20 10 kHz, NoiseFlg:2,4
 Range: Delay 75m, Spacing 15m, Gates 100
 Ave. Pulses: 84, Rng/Prof Aspect@90m/s: 5.9

	Min	Max	Mean	Std	Varc%
hhN(dB)	-67.07	-63.69	-65.27	-75.38	9.8
vvN(dB)	-67.07	-63.58	-65.38	-75.43	9.9
hhL(dB)	-1.03	3.05	1.50	-7.68	12.1
vvL(dB)	3.58	6.00	5.68	-5.80	7.1
ppN(m/s)	-12.80	12.22	-0.05	4.14	
ppT(m/s)	-101.0	96.56	-0.37	32.69	
hh/vv(dB)	NaN	36.30	9.99	19.82	96.2
vh/hh(dB)	-99	-99	-99	-99	-99
hv/vv(dB)	NaN	-34.33	-58.64	-46.45	1653
hnjmp(dB)			0.15		
vnjmp(dB)			0.15		