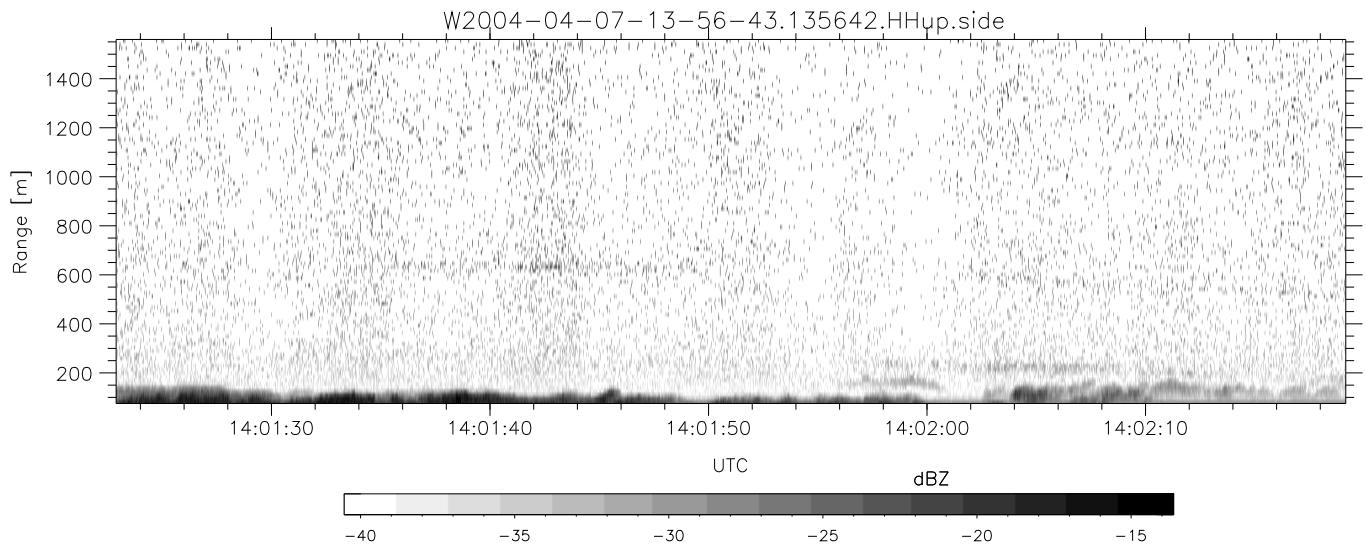
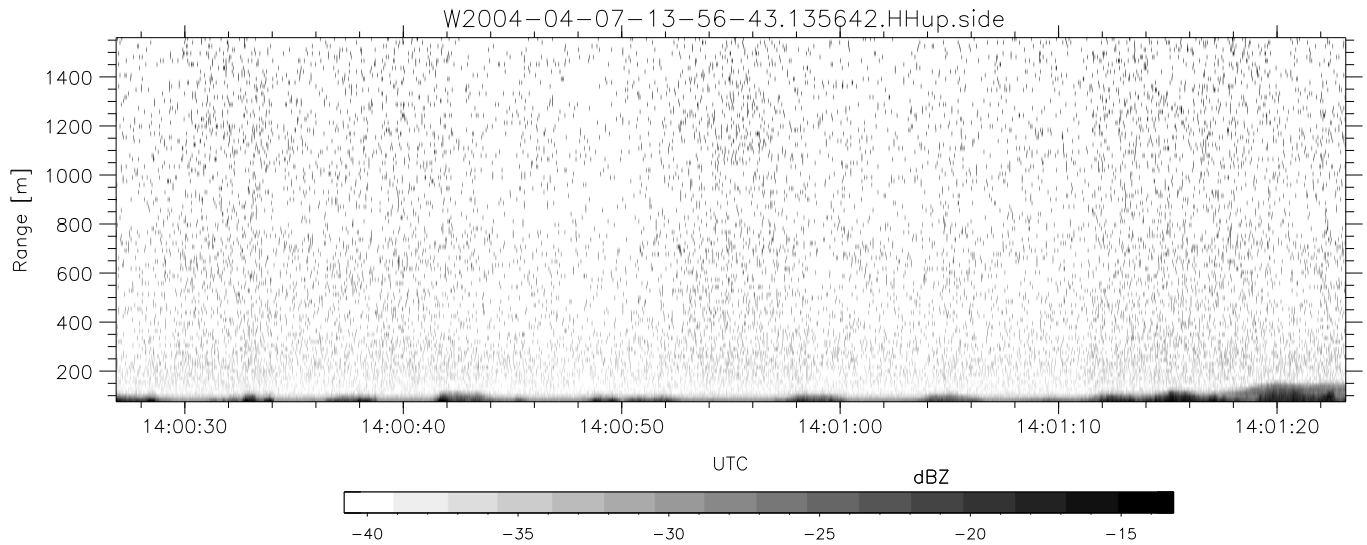
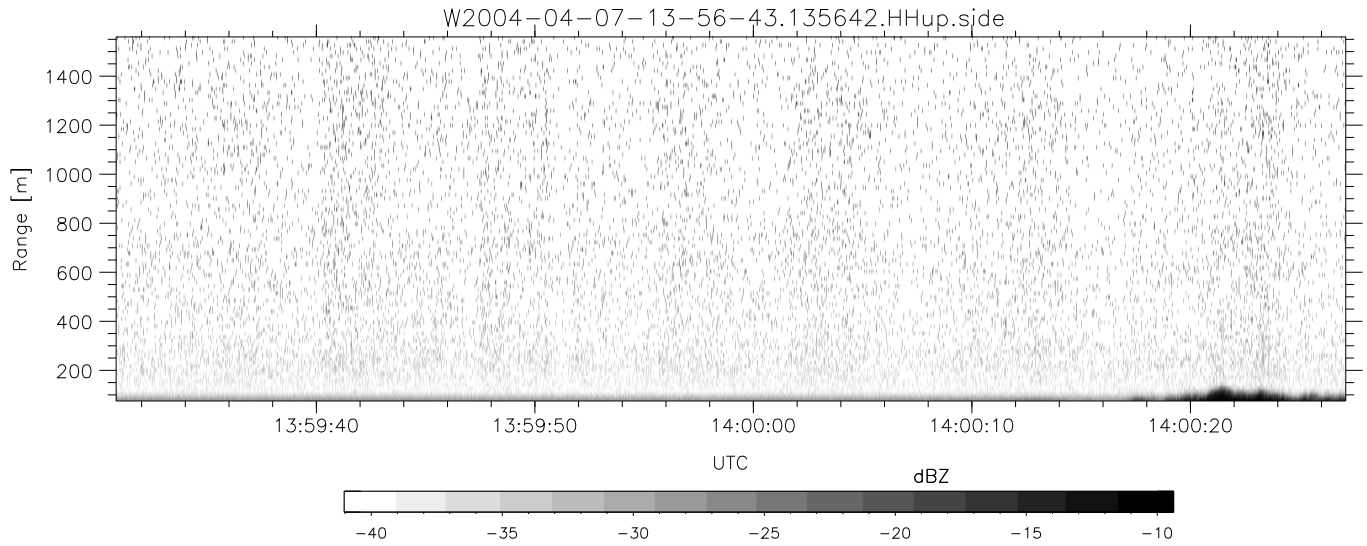


CIFEX 2004 Data (cal/250ns+2.5/100ns-3.5/500ns: 53.0,50.0)

W2004-04-07-13-56-43 - PPMAG4, IRIG:1/0/2  
 UTC: 13:56:42.79 to 14:53:17.35, Dur: 3395s  
 TimeLngth: 3394.58s, TimeInt: 28ms (35.4pps)  
 TimeCor=-13.0s, PPS(min,max,med): 35,36,35  
 Timeint/DSPdiff(mn,min,mx):28,28,40/28,28,33  
 Prof: 351 to 120689, NumProf(r/t): 17571/120338  
 ProcTime/Recs: 13:56:42-14:04:58/0-17570  
 ADacqtime: 25ms; DRate: 198.4KB/s; Flags: 0, 0, 0  
 Pulse: 275ns, IFilt: 5.0MHz; ppPol: HH HV VV  
 TxPol: HHVV, PRF: 20 10 20 10 kHz, NoiseFlg:4,2  
 Range: Delay 75m, Spacing 15m, Gates 100  
 Ave. Pulses: 84, Rng/Prof Aspect@90m/s: 5.9

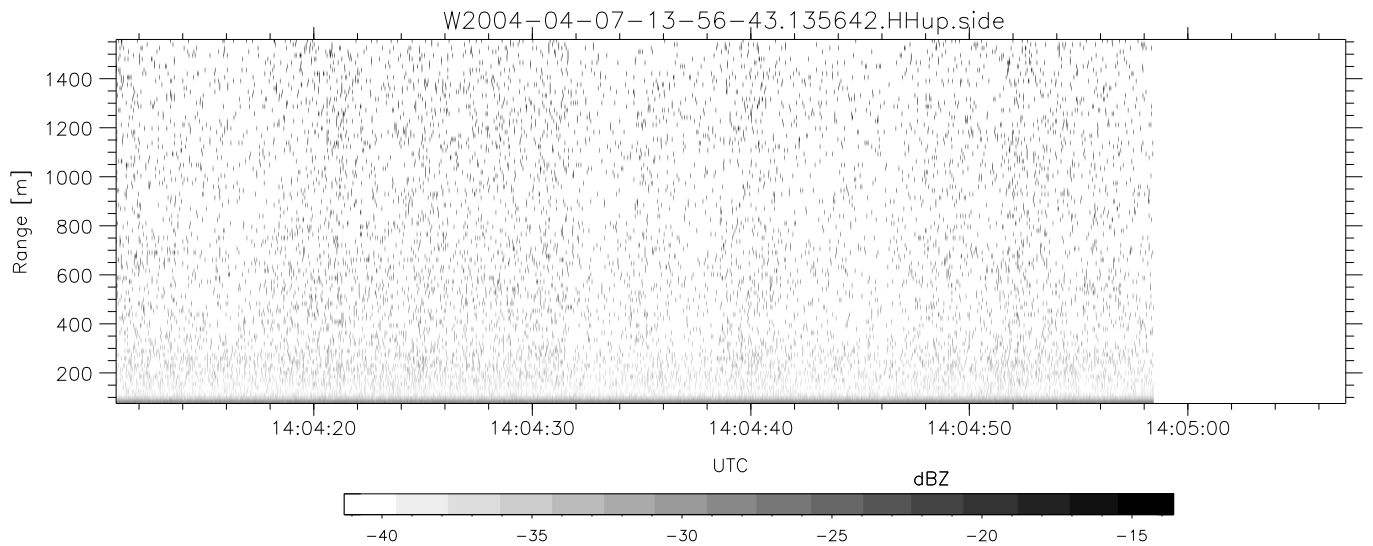
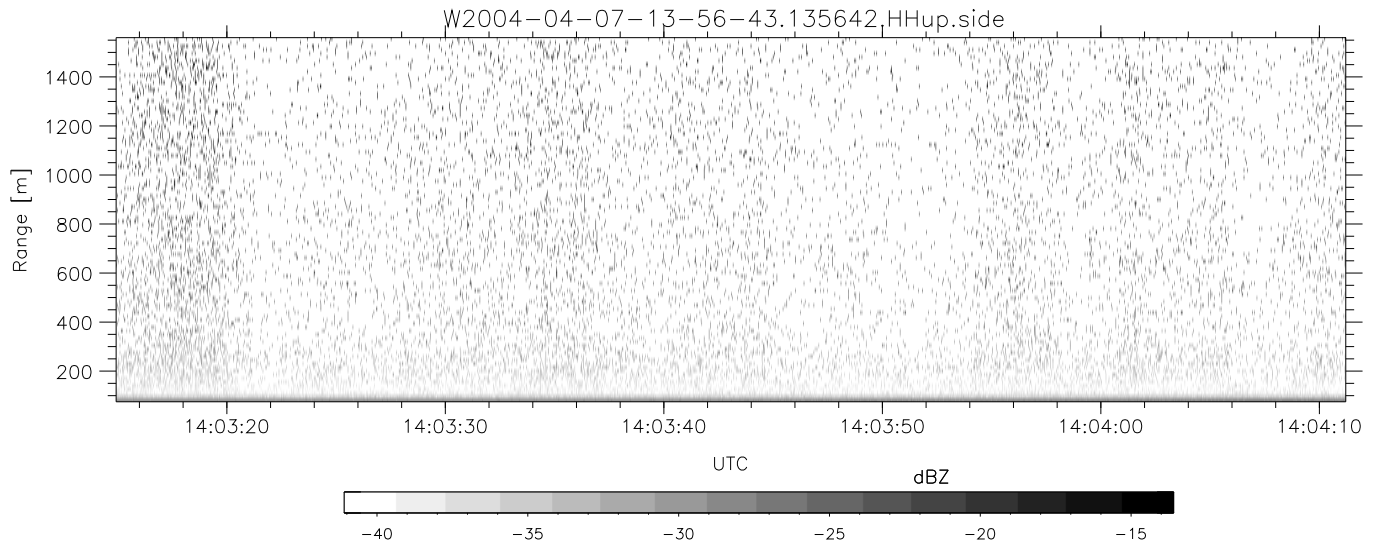
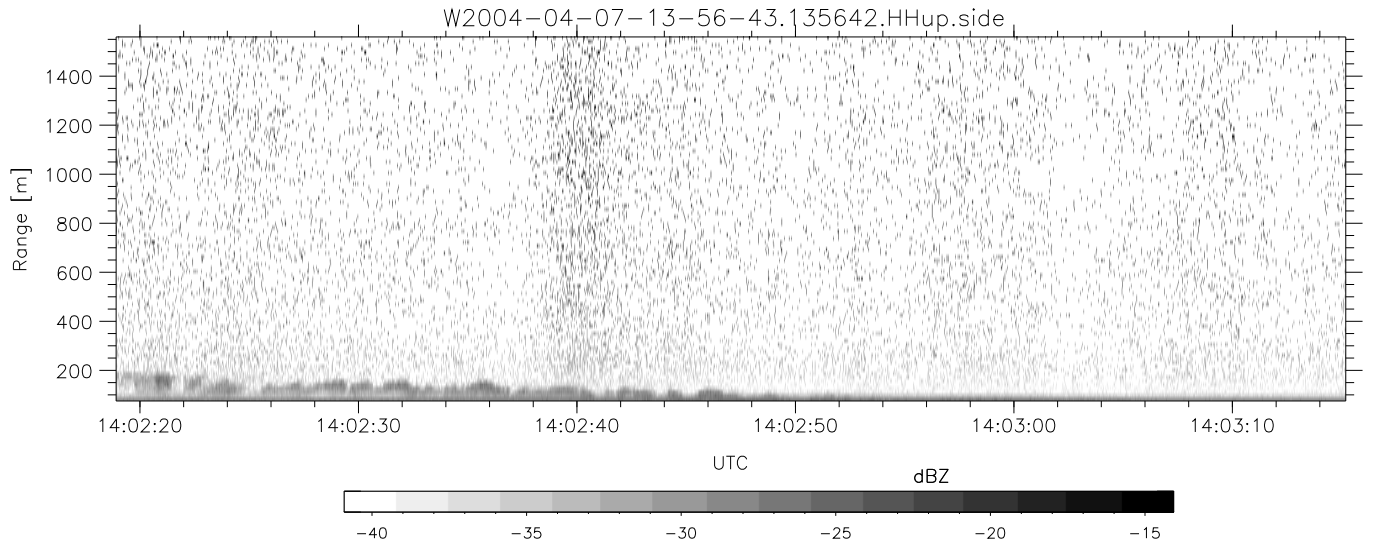
	Min	Max	Mean	Std	Varc%
hhN (dB)	-67.17	-63.79	-65.18	-75.30	9.7
vvN (dB)	-67.16	-63.14	-65.17	-75.20	9.9
hhL (dB)	-6.36	-3.16	-4.80	-13.43	13.7
vvL (dB)	4.87	6.00	5.99	-15.81	0.7
ppN (m/s)	-12.64	12.46	-0.04	4.15	
ppT (m/s)	-99.84	98.41	-0.30	32.80	
hh/vv (dB)	NaN	31.12	15.37	20.96	362.
vh/hh (dB)	-99	-99	-99	-99	-99
hv/vv (dB)	NaN	-34.50	-55.08	-45.98	812.
hnjmp (dB)			0.16		
vnjmp (dB)			0.15		



CIFEX 2004 Data (cal/250ns+2.5/100ns-3.5/500ns: 53.0,50.0)

W2004-04-07-13-56-43 - PPMAG4, IRIG:1/0/2  
 UTC: 13:56:42.79 to 14:53:17.35, Dur: 3395s  
 TimeLngth: 3394.58s, TimeInt: 28ms (35.4pps)  
 TimeCor=-13.0s, PPS(min,max,med): 35,36,35  
 Timeint/DSPdiff(mn,min,mx):28,28,40/28,28,33  
 Prof: 351 to 120689, NumProf(r/t): 17571/120338  
 ProcTime/Recs: 13:56:42-14:04:58/0-17570  
 ADacqtime: 25ms; DRate: 198.4KB/s; Flags: 0, 0, 0  
 Pulse: 275ns, IFilt: 5.0MHz; ppPol: HH HV VV  
 TxPol: HHVV, PRF: 20 10 20 10 kHz, NoiseFlg:4,2  
 Range: Delay 75m, Spacing 15m, Gates 100  
 Ave. Pulses: 84, Rng/Prof Aspect@90m/s: 5.9

	Min	Max	Mean	Std	Varc%
hhN (dB)	-67.17	-63.79	-65.18	-75.30	9.7
vvN (dB)	-67.16	-63.14	-65.17	-75.20	9.9
hhL (dB)	-6.36	-3.16	-4.80	-13.43	13.7
vvL (dB)	4.87	6.00	5.99	-15.81	0.7
ppN (m/s)	-12.64	12.46	-0.04	4.15	
ppT (m/s)	-99.84	98.41	-0.30	32.80	
hh/vv (dB)	NaN	31.12	15.37	20.96	362.
vh/hh (dB)	-99	-99	-99	-99	-99
hv/vv (dB)	NaN	-34.50	-55.08	-45.98	812.
hnjmp (dB)			0.16		
vnjmp (dB)			0.15		



CIFEX 2004 Data (cal/250ns+2.5/100ns-3.5/500ns: 53.0,50.0)

W2004-04-07-13-56-43 - PPMAG4, IRIG:1/0/2  
 UTC: 13:56:42.79 to 14:53:17.35, Dur: 3395s  
 TimeLngth: 3394.58s, TimeInt: 28ms (35.4pps)  
 TimeCor=-13.0s, PPS(min,max,med): 35,36,35  
 Timeint/DSPdiff(mn,min,mx):28,28,40/28,28,33  
 Prof: 351 to 120689, NumProf(r/t): 17571/120338  
 ProcTime/Recs: 13:56:42-14:04:58/0-17570  
 ADacqtime: 25ms; DRate: 198.4KB/s; Flags: 0, 0, 0  
 Pulse: 275ns, IFilt: 5.0MHz; ppPol: HH HV VV  
 TxPol: HHVV, PRF: 20 10 20 10 kHz, NoiseFlg:4,2  
 Range: Delay 75m, Spacing 15m, Gates 100  
 Ave. Pulses: 84, Rng/Prof Aspect@90m/s: 5.9

	Min	Max	Mean	Std	Varc%
hhN (dB)	-67.17	-63.79	-65.18	-75.30	9.7
vvN (dB)	-67.16	-63.14	-65.17	-75.20	9.9
hhL (dB)	-6.36	-3.16	-4.80	-13.43	13.7
vvL (dB)	4.87	6.00	5.99	-15.81	0.7
ppN (m/s)	-12.64	12.46	-0.04	4.15	
ppT (m/s)	-99.84	98.41	-0.30	32.80	
hh/vv (dB)	NaN	31.12	15.37	20.96	362.
vh/hh (dB)	-99	-99	-99	-99	-99
hv/vv (dB)	NaN	-34.50	-55.08	-45.98	812.
hnjmp (dB)			0.16		
vnjmp (dB)			0.15		