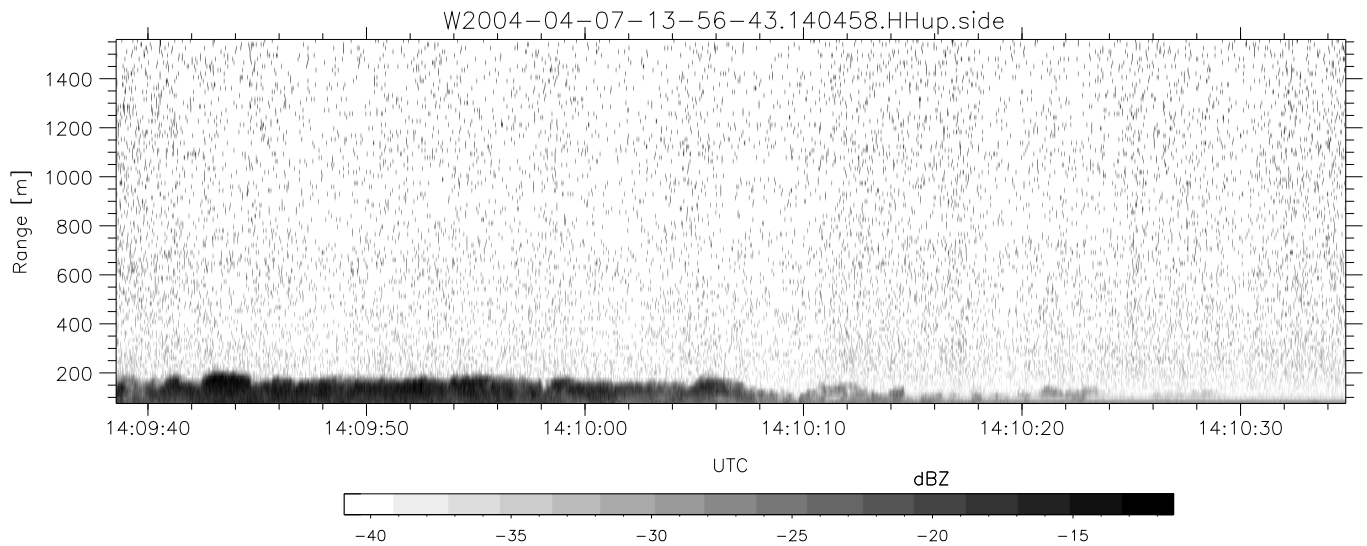
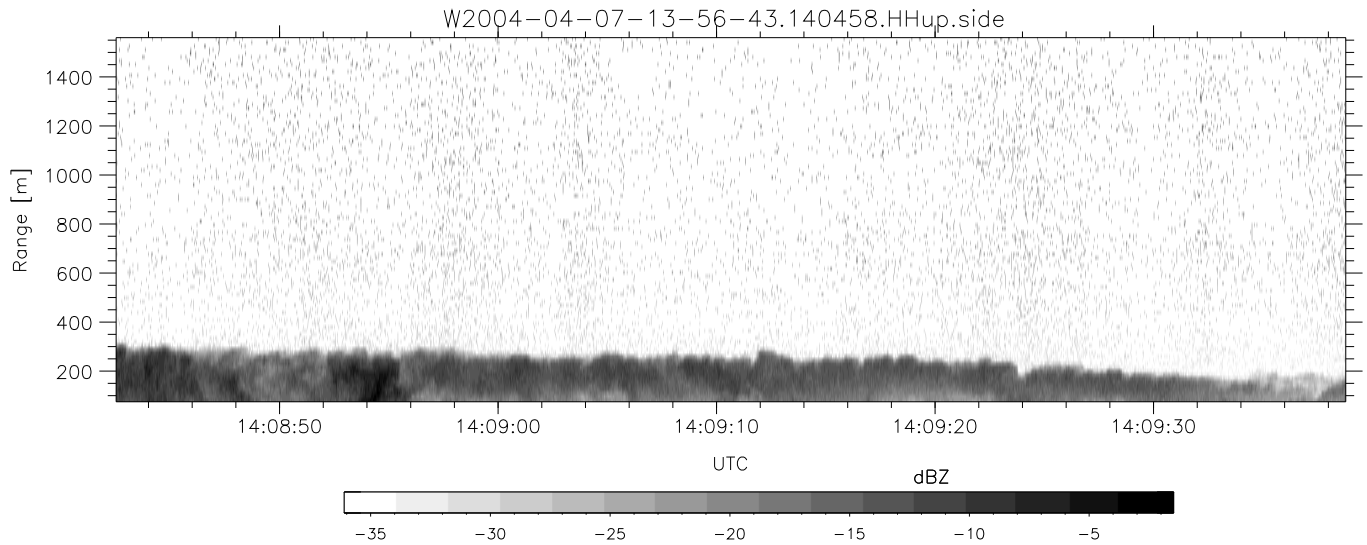
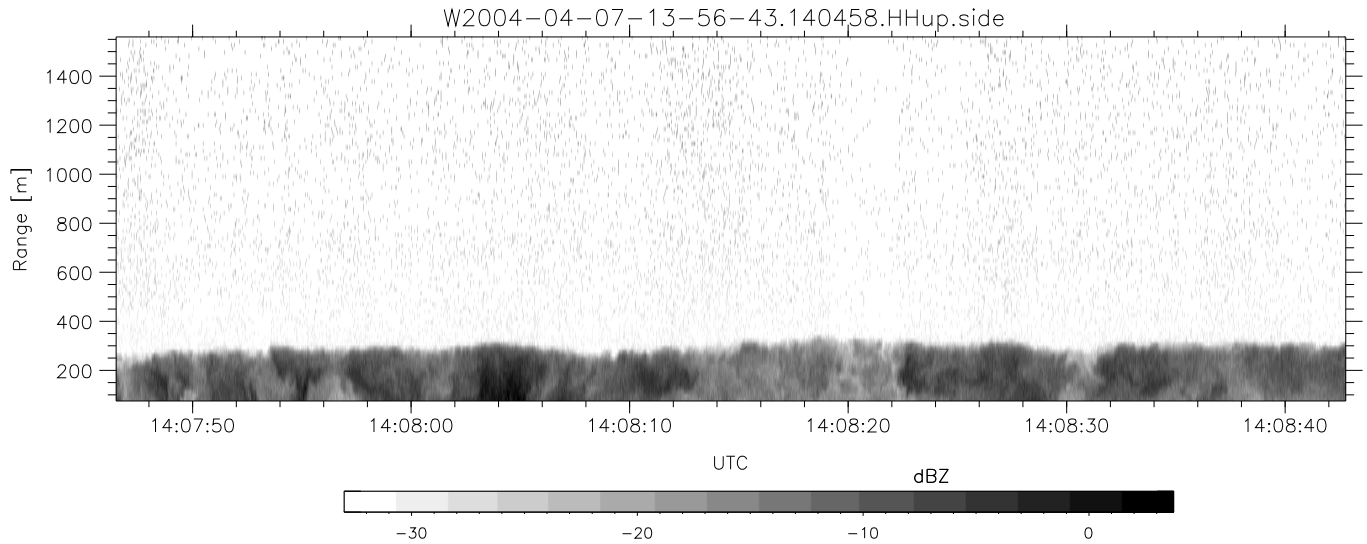


CIFEX 2004 Data (cal/250ns+2.5/100ns-3.5/500ns: 53.0,50.0)

W2004-04-07-13-56-43 - PPMAG4, IRIG:1/0/2
 UTC: 13:56:42.79 to 14:53:17.35, Dur: 3395s
 TimeLngth: 3394.47s, TimeInt: 28ms (35.5pps)
 TimeCor=-13.0s, PPS(min,max,med): 35,36,35
 Timeint/DSPdiff(mn,min,mx):28,28,37/28,28,28
 Prof: 351 to 120689, NumProf(r/t): 17571/120338
 ProcTime/Recs: 14:04:58-14:13:14/17571-35141
 ADacqtime: 25ms; DRate: 198.4KB/s; Flags: 0, 0, 0
 Pulse: 275ns, IFilt: 5.0MHz; ppPol: HH HV VV
 TxPol: HHV, PRF: 20 10 20 10 kHz, NoiseFlg:4,2
 Range: Delay 75m, Spacing 15m, Gates 100
 Ave. Pulses: 84, Rng/Prof Aspect@90m/s: 5.9

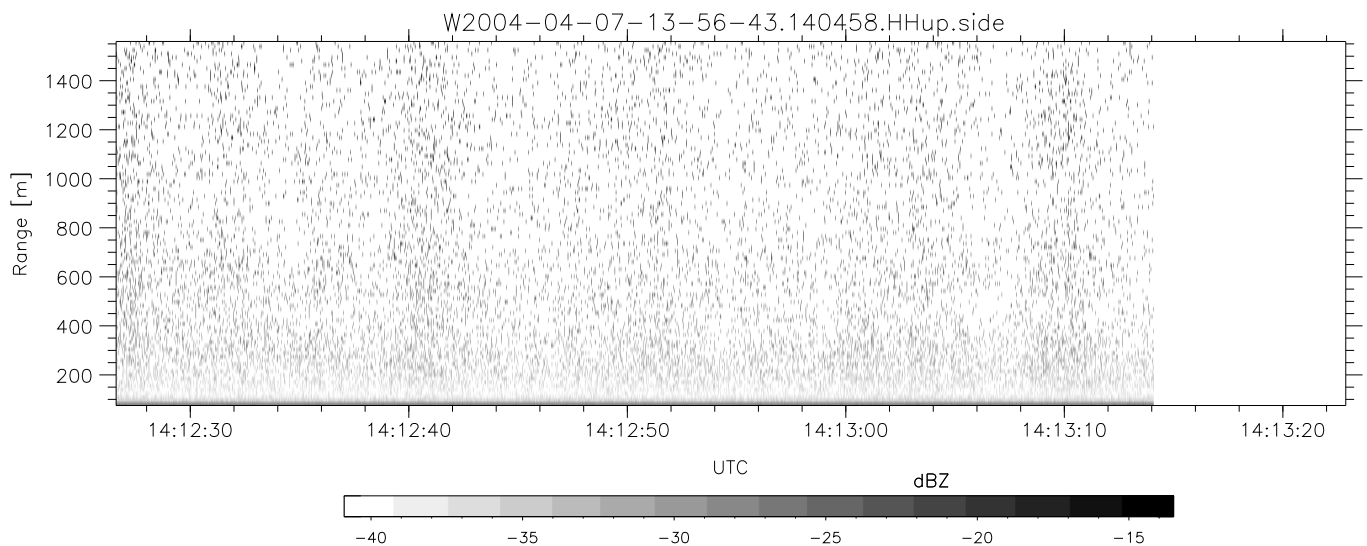
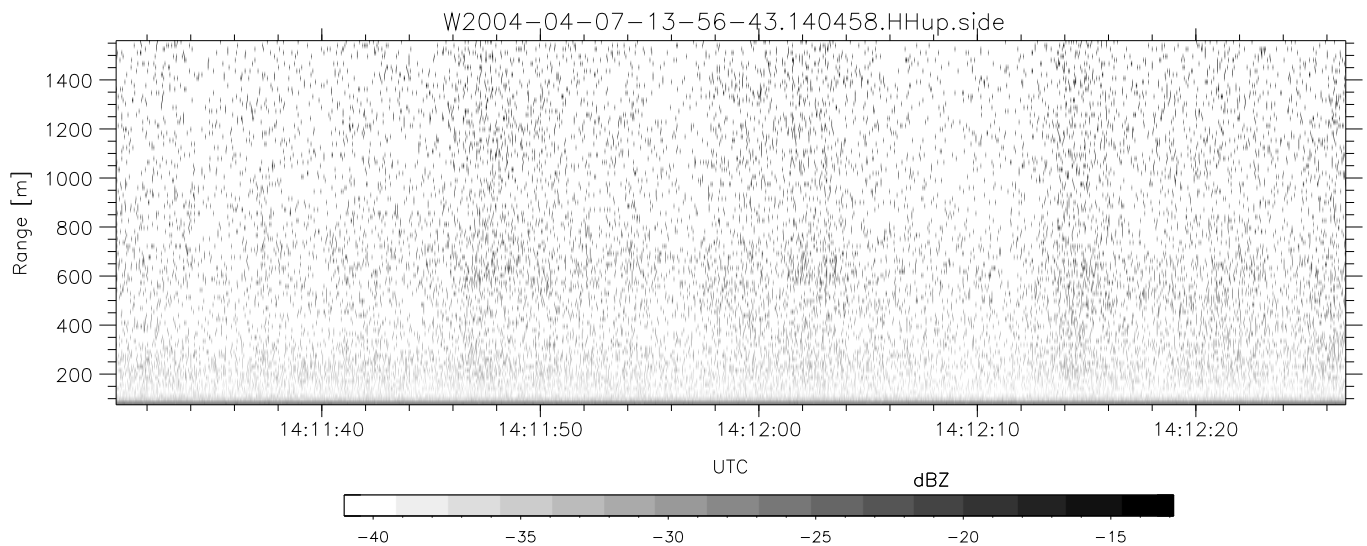
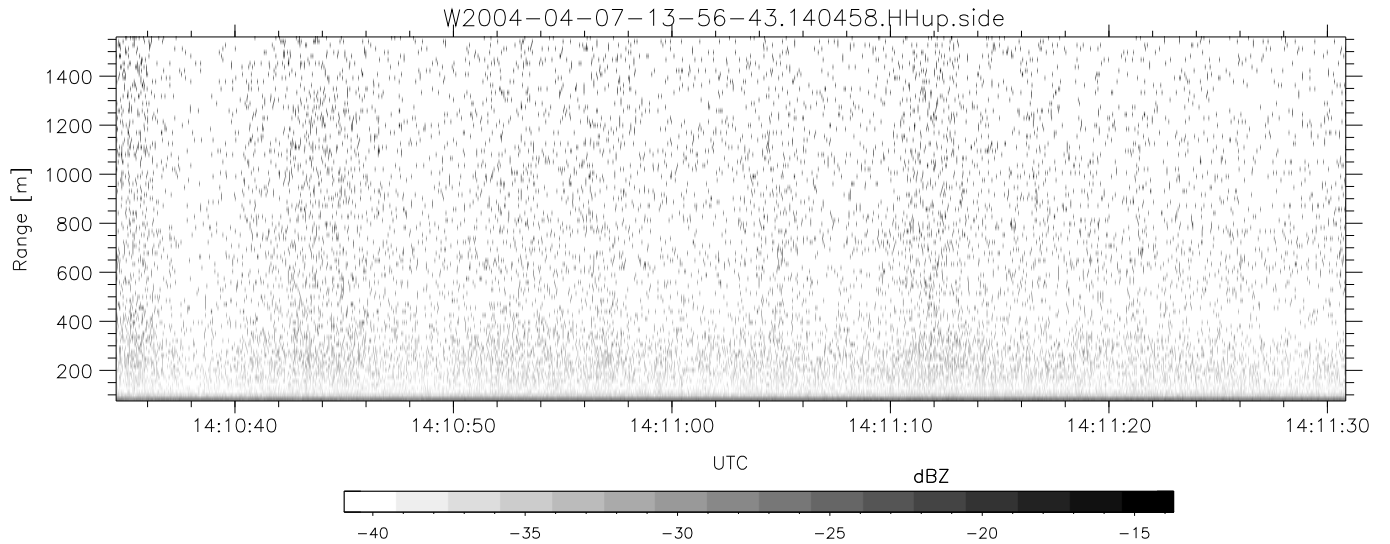
	Min	Max	Mean	Std	Varc%
hhN (dB)	-67.15	-63.46	-65.19	-75.29	9.8
vvN (dB)	-67.01	-63.61	-65.21	-75.24	9.9
hhL (dB)	-6.33	-2.37	-4.34	-12.48	15.4
vvL (dB)	5.25	6.00	5.99	-14.91	0.8
ppN (m/s)	-12.37	12.86	-0.05	4.16	
ppT (m/s)	-97.70	101.59	-0.43	32.86	
hh/vv (dB)	NaN	24.31	5.50	9.52	252.
vh/hh (dB)	NaN	-27.24	-33.22	-34.70	71.0
hv/vv (dB)	NaN	-33.11	-53.11	-45.18	622.
hn_jmp (dB)			-0.15		
vn_jmp (dB)			-0.14		



CIFEX 2004 Data (cal/250ns+2.5/100ns-3.5/500ns: 53.0,50.0)

W2004-04-07-13-56-43 - PPMAG4, IRIG:1/0/2
 UTC: 13:56:42.79 to 14:53:17.35, Dur: 3395s
 TimeLngth: 3394.47s, TimeInt: 28ms (35.5pps)
 TimeCor=-13.0s, PPS(min,max,med): 35,36,35
 Timeint/DSPdiff(mn,min,mx):28,28,37/28,28,28
 Prof: 351 to 120689, NumProf(r/t): 17571/120338
 ProcTime/Recs: 14:04:58-14:13:14/17571-35141
 ADacqtime: 25ms; DRate: 198.4KB/s; Flags: 0, 0, 0
 Pulse: 275ns, IFilt: 5.0MHz; ppPol: HH HV VV
 TxPol: HHVV, PRF: 20 10 20 10 kHz, NoiseFlg:4,2
 Range: Delay 75m, Spacing 15m, Gates 100
 Ave. Pulses: 84, Rng/Prof Aspect@90m/s: 5.9

	Min	Max	Mean	Std	Varc%
hhN (dB)	-67.15	-63.46	-65.19	-75.29	9.8
vvN (dB)	-67.01	-63.61	-65.21	-75.24	9.9
hhL (dB)	-6.33	-2.37	-4.34	-12.48	15.4
vvL (dB)	5.25	6.00	5.99	-14.91	0.8
ppN (m/s)	-12.37	12.86	-0.05	4.16	
ppT (m/s)	-97.70	101.59	-0.43	32.86	
hh/vv (dB)	NaN	24.31	5.50	9.52	252.
vh/hh (dB)	NaN	-27.24	-33.22	-34.70	71.0
hv/vv (dB)	NaN	-33.11	-53.11	-45.18	622.
hn_jmp (dB)			-0.15		
vn_jmp (dB)			-0.14		



CIFEX 2004 Data (cal/250ns+2.5/100ns-3.5/500ns: 53.0,50.0)

W2004-04-07-13-56-43 - PPMAG4, IRIG:1/0/2
 UTC: 13:56:42.79 to 14:53:17.35, Dur: 3395s
 TimeLngth: 3394.47s, TimeInt: 28ms (35.5pps)
 TimeCor=-13.0s, PPS(min,max,med): 35,36,35
 Timeint/DSPdiff(mn,min,mx):28,28,37/28,28,28
 Prof: 351 to 120689, NumProf(r/t): 17571/120338
 ProcTime/Recs: 14:04:58-14:13:14/17571-35141
 ADacqtime: 25ms; DRate: 198.4KB/s; Flags: 0, 0, 0
 Pulse: 275ns, IFilt: 5.0MHz; ppPol: HH HV VV
 TxPol: HHVV, PRF: 20 10 20 10 kHz, NoiseFlg:4,2
 Range: Delay 75m, Spacing 15m, Gates 100
 Ave. Pulses: 84, Rng/Prof Aspect@90m/s: 5.9

	Min	Max	Mean	Std	Varc%
hhN (dB)	-67.15	-63.46	-65.19	-75.29	9.8
vvN (dB)	-67.01	-63.61	-65.21	-75.24	9.9
hhL (dB)	-6.33	-2.37	-4.34	-12.48	15.4
vvL (dB)	5.25	6.00	5.99	-14.91	0.8
ppN (m/s)	-12.37	12.86	-0.05	4.16	
ppT (m/s)	-97.70	101.59	-0.43	32.86	
hh/vv (dB)	NaN	24.31	5.50	9.52	252.
vh/hh (dB)	NaN	-27.24	-33.22	-34.70	71.0
hv/vv (dB)	NaN	-33.11	-53.11	-45.18	622.
hn_jmp (dB)			-0.15		
vn_jmp (dB)			-0.14		