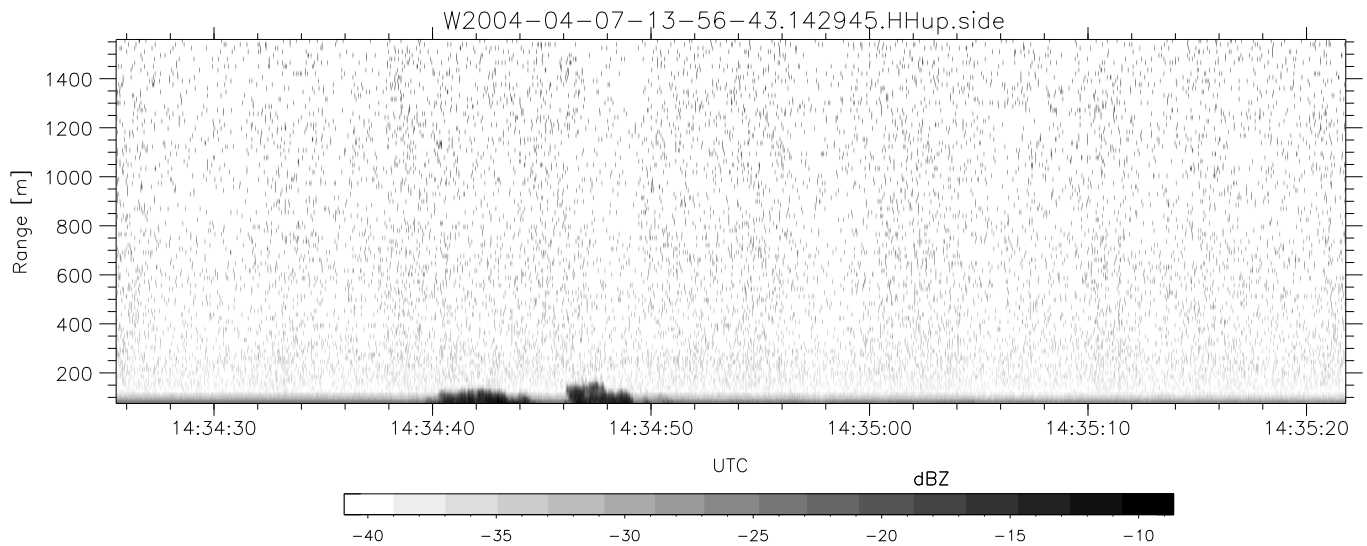
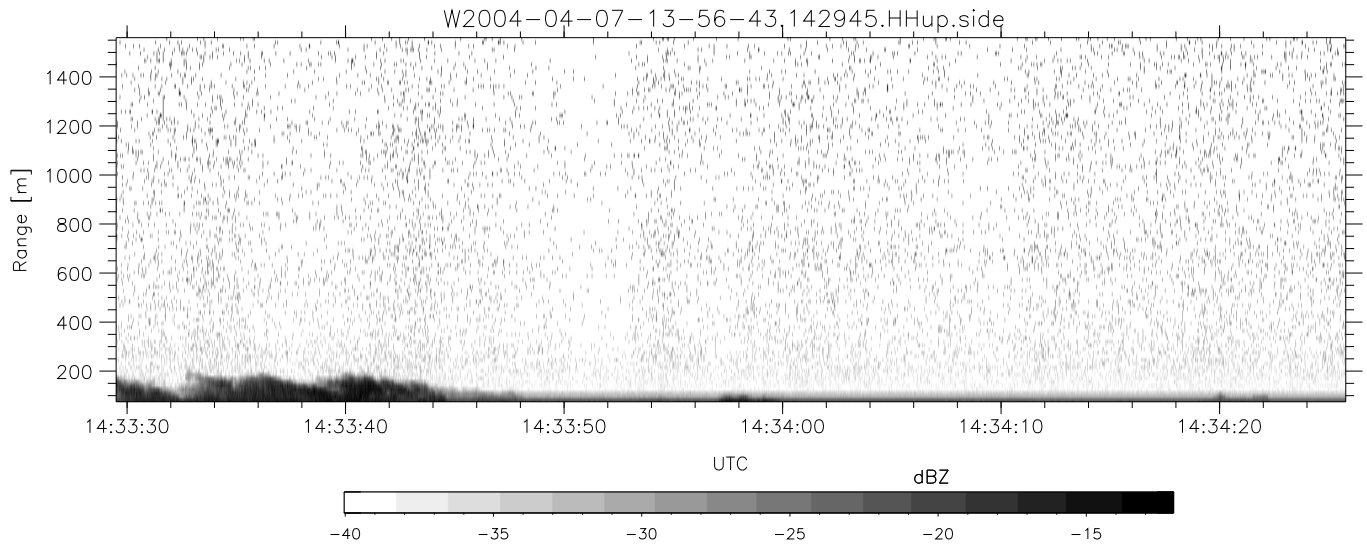
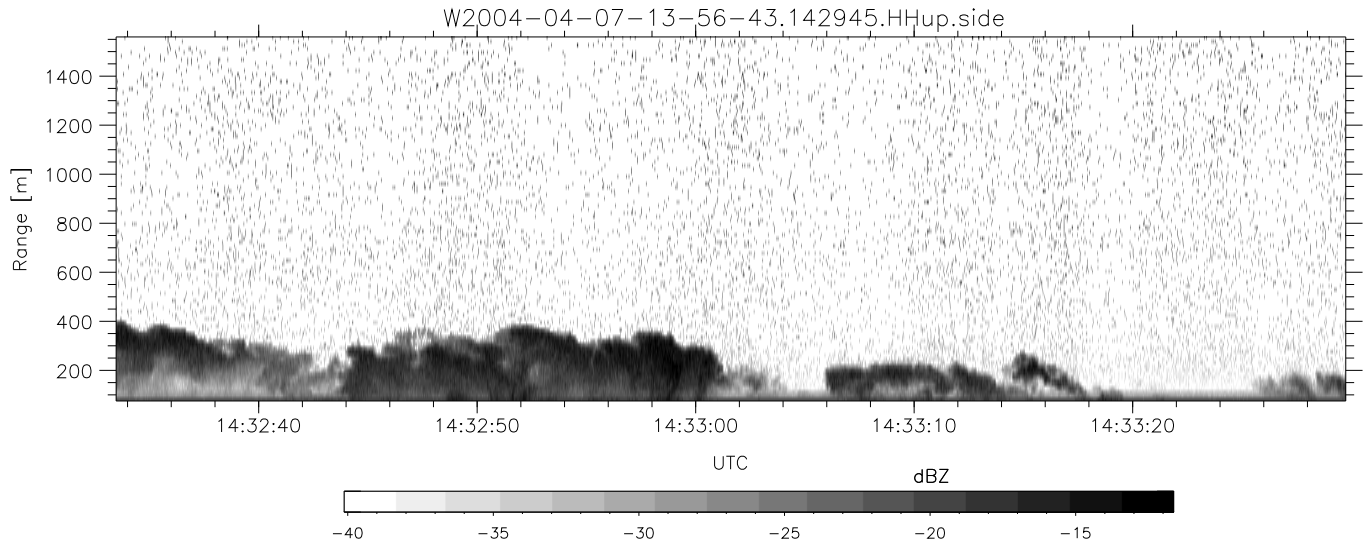


CIFEX 2004 Data (cal/250ns+2.5/100ns-3.5/500ns: 53.0,50.0)

W2004-04-07-13-56-43 - PPMAG4, IRIG:1/0/2  
 UTC: 13:56:42.79 to 14:53:17.35, Dur: 3395s  
 TimeLngth: 3394.47s, TimeInt: 28ms (35.5pps)  
 TimeCor=-13.0s, PPS(min,max,med): 35,36,35  
 Timeint/DSPdiff(mn,min,mx):28,28,33/28,28,33  
 Prof: 351 to 120689, NumProf(r/t): 17571/120338  
 ProcTime/Recs: 14:29:45-14:38:01/70284-87854  
 ADacqtime: 25ms; DRate: 198.4KB/s; Flags: 0, 0, 0  
 Pulse: 275ns, IFilt: 5.0MHz; ppPol: HH HV VV  
 TxPol: HHVV, PRF: 20 10 20 10 kHz, NoiseFlg:4,2  
 Range: Delay 75m, Spacing 15m, Gates 100  
 Ave. Pulses: 84, Rng/Prof Aspect@90m/s: 5.9

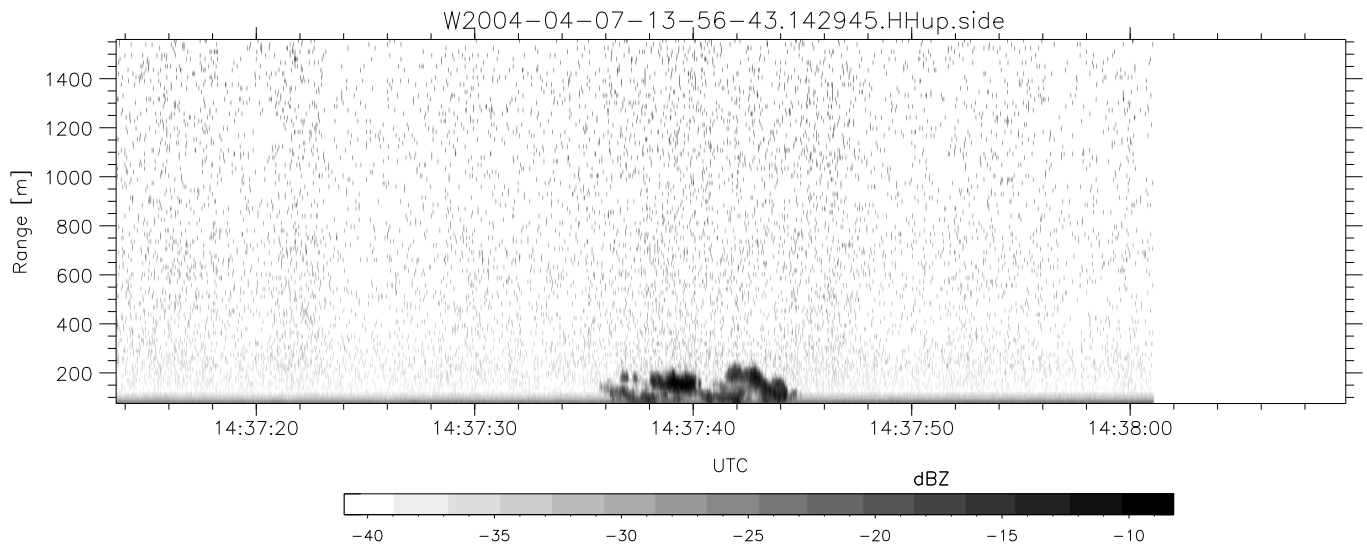
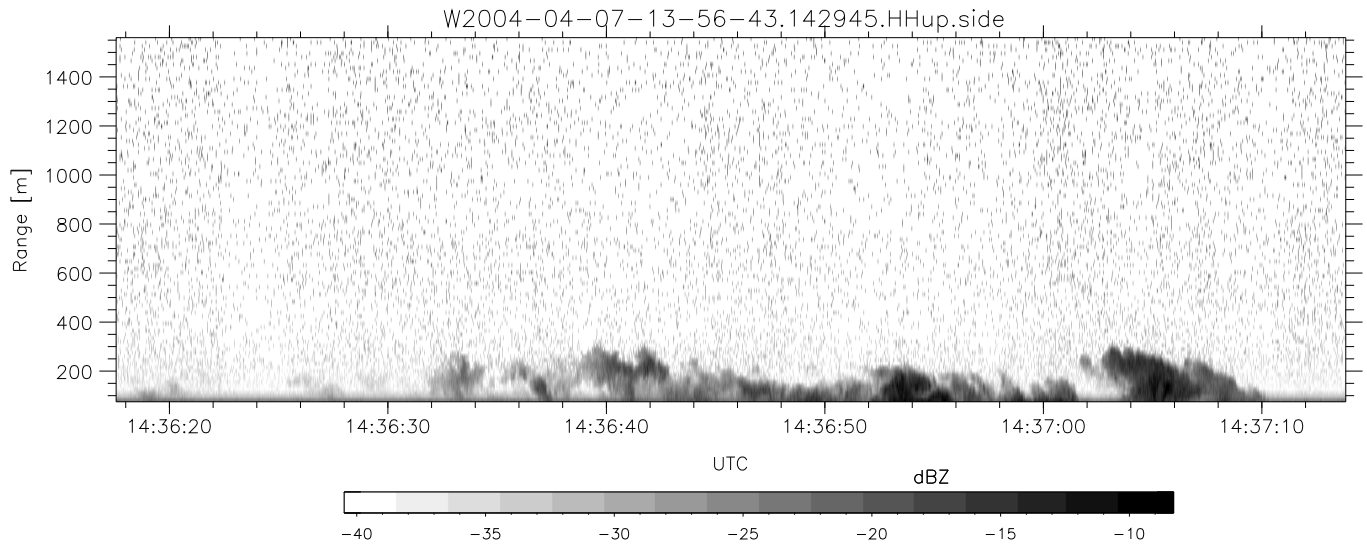
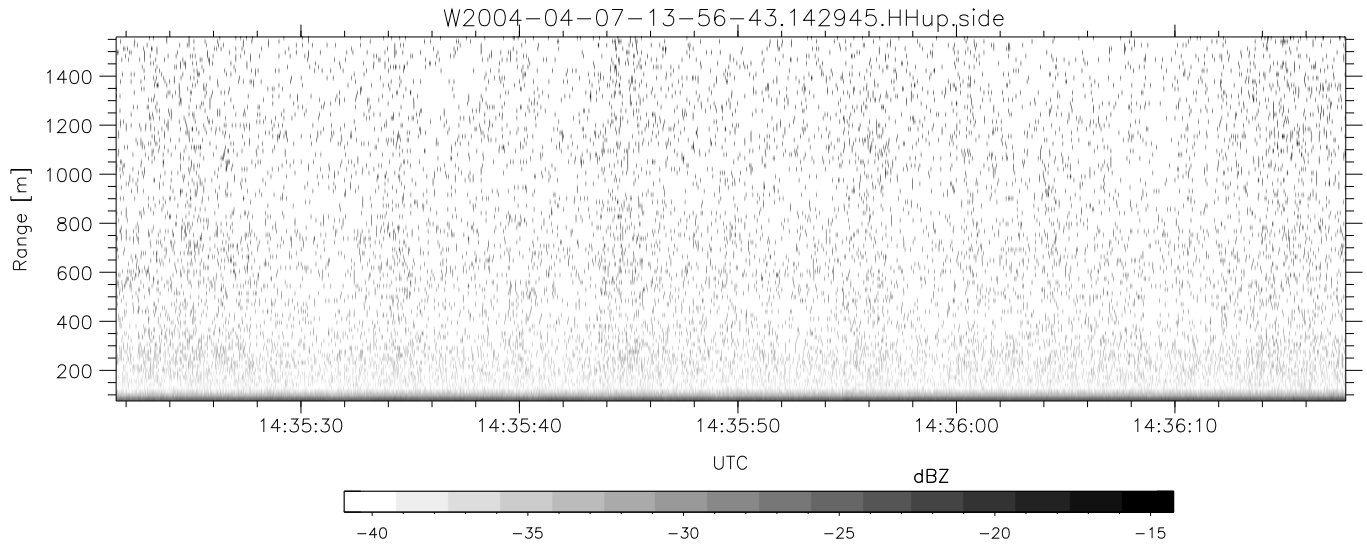
	Min	Max	Mean	Std	Varc%
hhN(dB)	-67.15	-63.77	-65.36	-75.46	9.8
vvN(dB)	-67.53	-63.54	-65.37	-75.40	9.9
hhL(dB)	-3.27	3.37	0.95	-3.76	33.8
vvL(dB)	1.80	6.00	5.59	-2.69	14.9
ppN(m/s)	-12.32	12.52	-0.02	4.13	
ppT(m/s)	-97.31	98.90	-0.18	32.63	
hh/vv(dB)	NaN	45.21	NaN	38.25	-175
vh/hh(dB)	-99	-99	-99	-99	-99
hv/vv(dB)	NaN	-33.95	-56.75	-45.99	1190
hnjmp(dB)				0.15	
vnjmp(dB)				0.15	



CIFEX 2004 Data (cal/250ns+2.5/100ns-3.5/500ns: 53.0,50.0)

W2004-04-07-13-56-43 - PPMAG4, IRIG:1/0/2  
 UTC: 13:56:42.79 to 14:53:17.35, Dur: 3395s  
 TimeLngth: 3394.47s, TimeInt: 28ms (35.5pps)  
 TimeCor=-13.0s, PPS(min,max,med): 35,36,35  
 Timeint/DSPdiff(mn,min,mx):28,28,33/28,28,33  
 Prof: 351 to 120689, NumProf(r/t): 17571/120338  
 ProcTime/Recs: 14:29:45-14:38:01/70284-87854  
 ADacqtime: 25ms; DRate: 198.4KB/s; Flags: 0, 0, 0  
 Pulse: 275ns, IFilt: 5.0MHz; ppPol: HH HV VV  
 TxPol: HHVV, PRF: 20 10 20 10 kHz, NoiseFlg:4,2  
 Range: Delay 75m, Spacing 15m, Gates 100  
 Ave. Pulses: 84, Rng/Prof Aspect@90m/s: 5.9

	Min	Max	Mean	Std	Varc%
hhN (dB)	-67.15	-63.77	-65.36	-75.46	9.8
vvN (dB)	-67.53	-63.54	-65.37	-75.40	9.9
hhL (dB)	-3.27	3.37	0.95	-3.76	33.8
vvL (dB)	1.80	6.00	5.59	-2.69	14.9
ppN (m/s)	-12.32	12.52	-0.02	4.13	
ppT (m/s)	-97.31	98.90	-0.18	32.63	
hh/vv (dB)	NaN	45.21	NaN	38.25	-175
vh/hh (dB)	-99	-99	-99	-99	-99
hv/vv (dB)	NaN	-33.95	-56.75	-45.99	1190
hnjmp (dB)			0.15		
vnjmp (dB)			0.15		



CIFEX 2004 Data (cal/250ns+2.5/100ns-3.5/500ns: 53.0,50.0)

W2004-04-07-13-56-43 - PPMAG4, IRIG:1/0/2  
 UTC: 13:56:42.79 to 14:53:17.35, Dur: 3395s  
 TimeLngth: 3394.47s, TimeInt: 28ms (35.5pps)  
 TimeCor=-13.0s, PPS(min,max,med): 35,36,35  
 Timeint/DSPdiff(mn,min,mx):28,28,33/28,28,33  
 Prof: 351 to 120689, NumProf(r/t): 17571/120338  
 ProcTime/Recs: 14:29:45-14:38:01/70284-87854  
 ADacqtime: 25ms; DRate: 198.4KB/s; Flags: 0, 0, 0  
 Pulse: 275ns, IFilt: 5.0MHz; ppPol: HH HV VV  
 TxPol: HHVV, PRF: 20 10 20 10 kHz, NoiseFlg:4,2  
 Range: Delay 75m, Spacing 15m, Gates 100  
 Ave. Pulses: 84, Rng/Prof Aspect@90m/s: 5.9

	Min	Max	Mean	Std	Varc%
hhN (dB)	-67.15	-63.77	-65.36	-75.46	9.8
vvN (dB)	-67.53	-63.54	-65.37	-75.40	9.9
hhL (dB)	-3.27	3.37	0.95	-3.76	33.8
vvL (dB)	1.80	6.00	5.59	-2.69	14.9
ppN (m/s)	-12.32	12.52	-0.02	4.13	
ppT (m/s)	-97.31	98.90	-0.18	32.63	
hh/vv (dB)	NaN	45.21	NaN	38.25	-175
vh/hh (dB)	-99	-99	-99	-99	-99
hv/vv (dB)	NaN	-33.95	-56.75	-45.99	1190
hnjmp (dB)			0.15		
vnjmp (dB)			0.15		