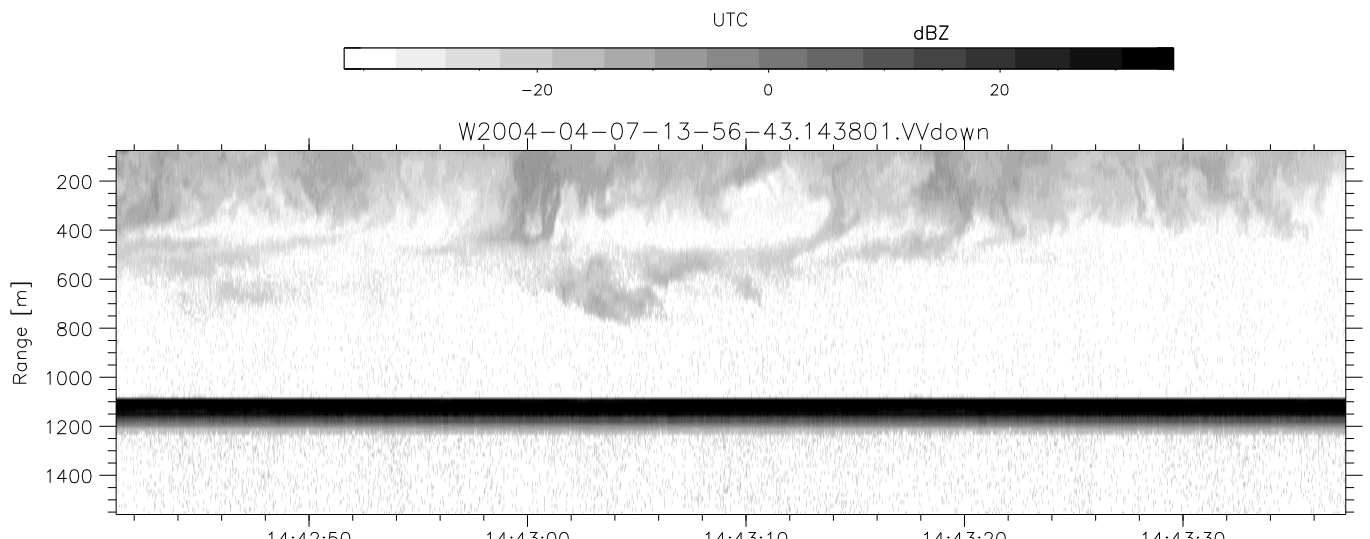
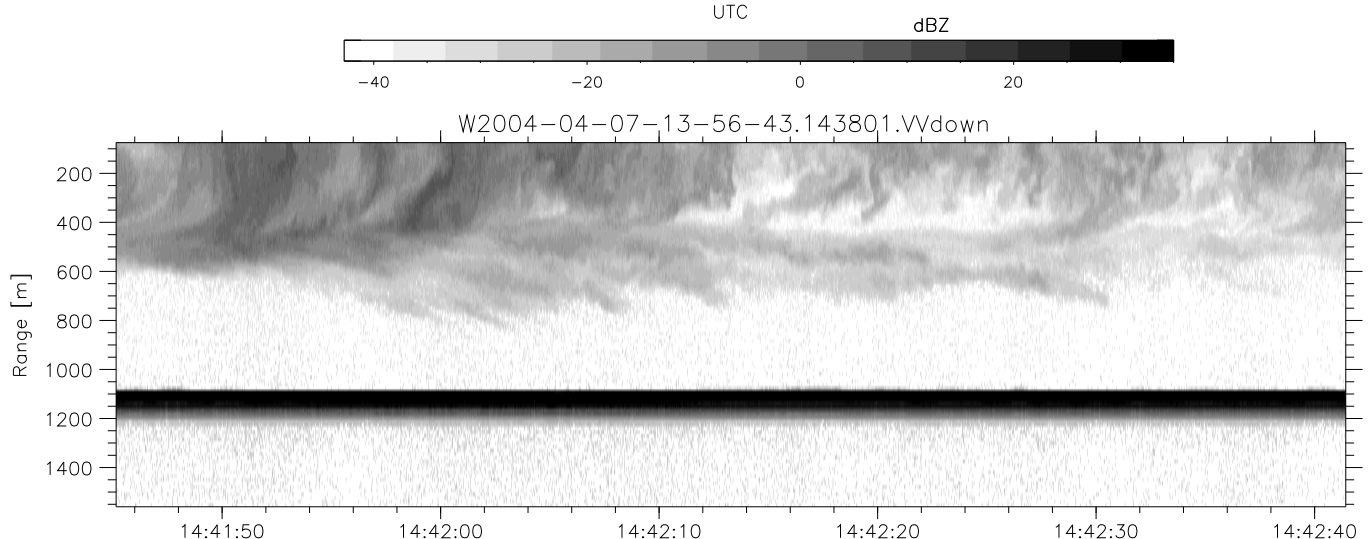
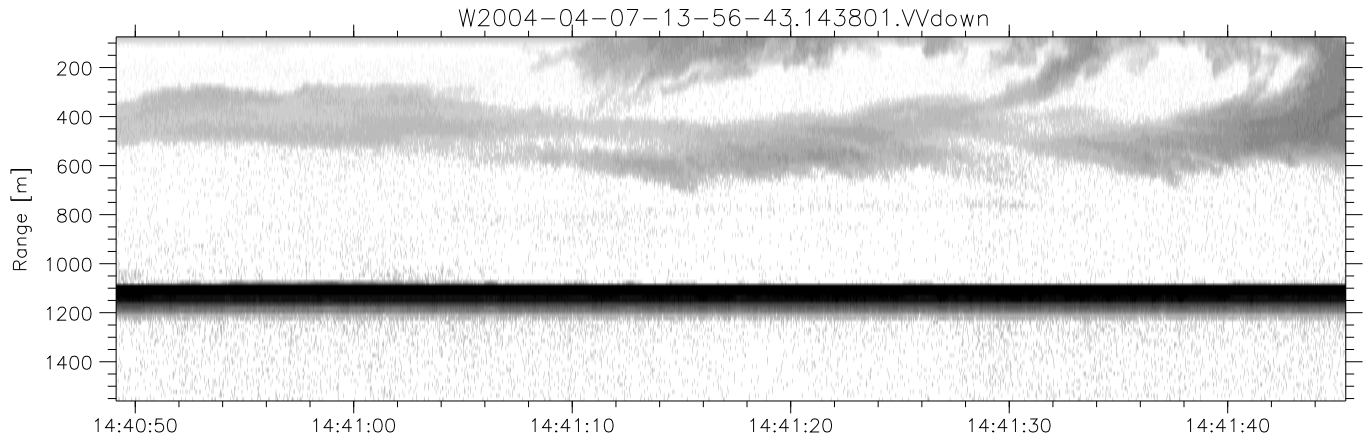


CIFEX 2004 Data (cal/250ns+2.5/100ns-3.5/500ns: 53.0,50.0)

W2004-04-07-13-56-43 - PPMAG4, IRIG:1/0/2
 UTC: 13:56:42.79 to 14:53:17.35, Dur: 3395s
 TimeLngth: 3394.47s, TimeInt: 28ms (35.5pps)
 TimeCor=-13.0s, PPS(min,max,med): 35,36,35
 Timeint/DSPdiff(mn,min,mx):28,28,33/28,28,33
 Prof: 351 to 120689, NumProf(r/t): 17571/120338
 ProcTime/Recs: 14:38:01-14:46:16/87855-105425
 ADacqtime: 25ms; DRate: 198.4KB/s; Flags: 0, 0, 0
 Pulse: 275ns, IFilt: 5.0MHz; ppPol: HH HV VV
 TxPol: HHV, PRF: 20 10 20 10 kHz, NoiseFlg:2,3
 Range: Delay 75m, Spacing 15m, Gates 100
 Ave. Pulses: 84, Rng/Prof Aspect@90m/s: 5.9

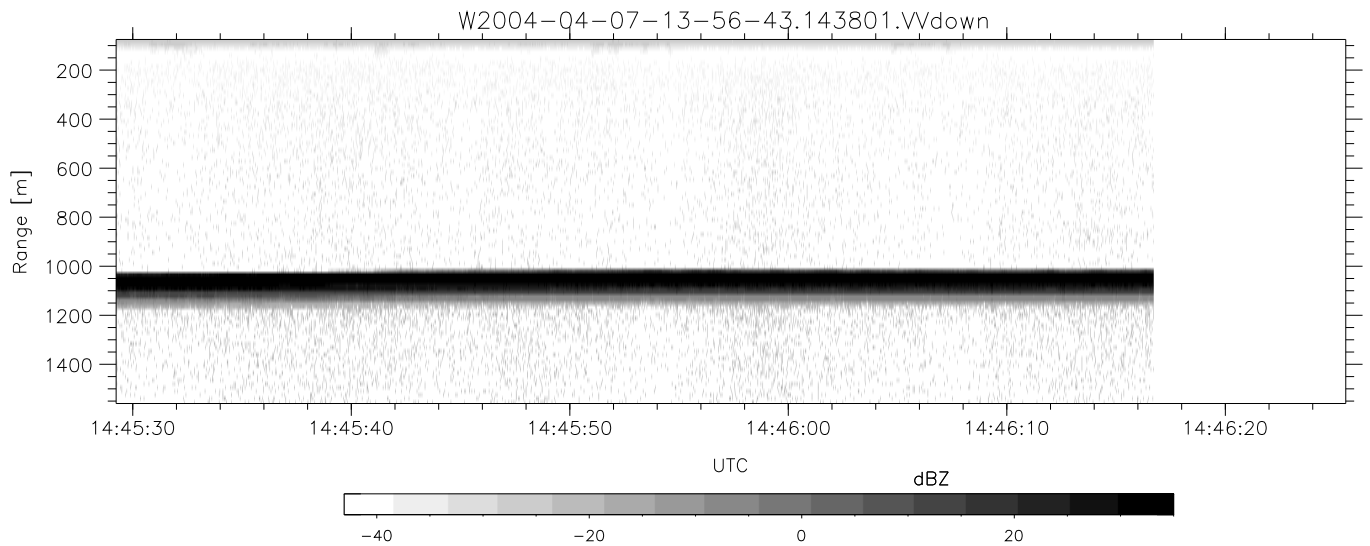
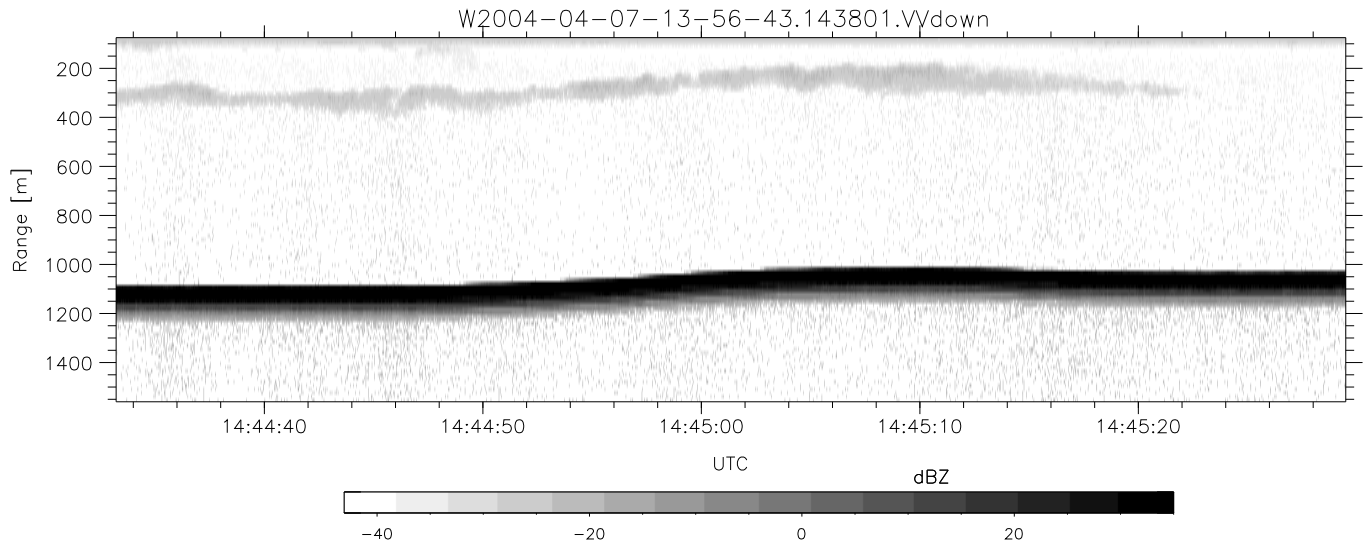
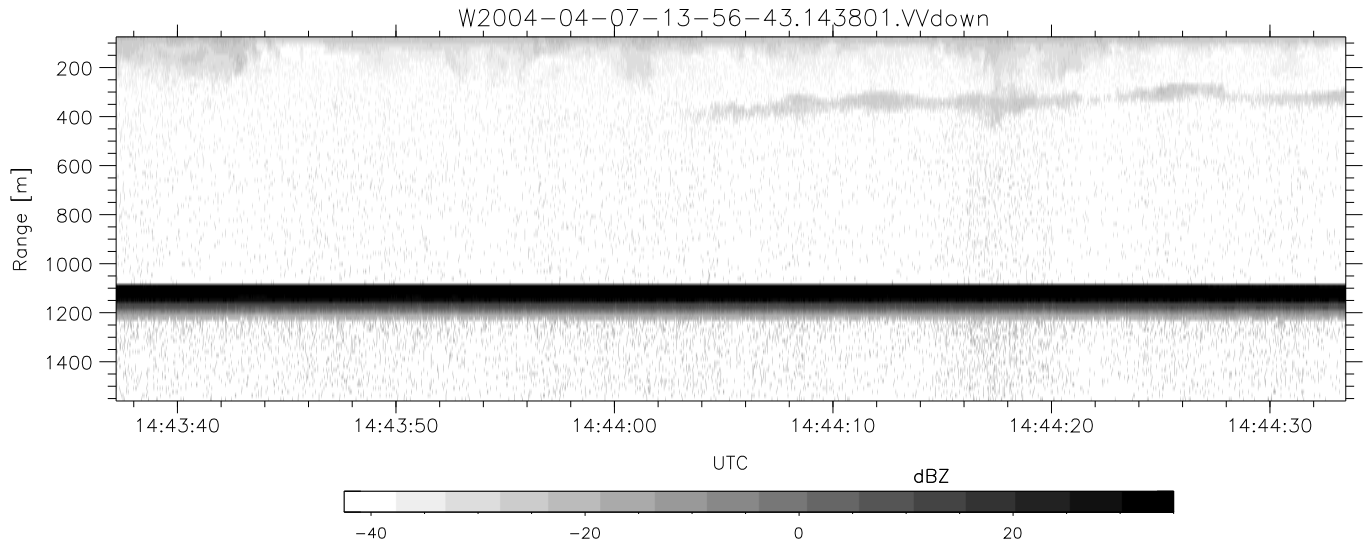
	Min	Max	Mean	Std	Varc%
hhN (dB)	-67.13	-63.98	-65.45	-75.47	10.0
vvN (dB)	-67.19	-63.80	-65.45	-75.45	10.0
hhL (dB)	-0.11	3.65	2.80	-6.30	12.3
vvL (dB)	4.35	6.00	5.99	-13.68	1.1
ppN (m/s)	-12.25	12.75	-0.04	4.16	
ppT (m/s)	-96.78	100.70	-0.30	32.83	
hh/vv (dB)	NaN	50.48	17.14	31.96	3034
vh/hh (dB)	NaN	-28.10	-33.14	-35.05	64.5
hv/vv (dB)	NaN	-33.11	-54.45	-45.88	718.
hnjmp (dB)			-0.16		
vnjmp (dB)			-0.15		



CIFEX 2004 Data (cal/250ns+2.5/100ns-3.5/500ns: 53.0,50.0)

W2004-04-07-13-56-43 - PPMAG4, IRIG:1/0/2
 UTC: 13:56:42.79 to 14:53:17.35, Dur: 3395s
 TimeLngth: 3394.47s, TimeInt: 28ms (35.5pps)
 TimeCor=-13.0s, PPS(min,max,med): 35,36,35
 Timeint/DSPdiff(mn,min,mx):28,28,33/28,28,33
 Prof: 351 to 120689, NumProf(r/t): 17571/120338
 ProcTime/Recs: 14:38:01-14:46:16/87855-105425
 ADacqtime: 25ms; DRate: 198.4KB/s; Flags: 0, 0, 0
 Pulse: 275ns, IFfilt: 5.0MHz; ppPol: HH HV VV
 TxPol: HHVV, PRF: 20 10 20 10 kHz, Noiseflg:2,3
 Range: Delay 75m, Spacing 15m, Gates 100
 Ave. Pulses: 84, Rng/Prof Aspect@90m/s: 5.9

	Min	Max	Mean	Std	Varc%
hhN(dB)	-67.13	-63.98	-65.45	-75.47	10.0
vvN(dB)	-67.19	-63.80	-65.45	-75.45	10.0
hhL(dB)	-0.11	3.65	2.80	-6.30	12.3
vvL(dB)	4.35	6.00	5.99	-13.68	1.1
ppN(m/s)	-12.25	12.75	-0.04	4.16	
ppT(m/s)	-96.78	100.70	-0.30	32.83	
hh/vv(dB)	NaN	50.48	17.14	31.96	3034
vh/hh(dB)	NaN	-28.10	-33.14	-35.05	64.5
hv/vv(dB)	NaN	-33.11	-54.45	-45.88	718.
hnjmp(dB)			-0.16		
vnjmp(dB)			-0.15		



CIFEX 2004 Data (cal/250ns+2.5/100ns-3.5/500ns: 53.0,50.0)

W2004-04-07-13-56-43 - PPMAG4, IRIG:1/0/2
 UTC: 13:56:42.79 to 14:53:17.35, Dur: 3395s
 TimeLngth: 3394.47s, TimeInt: 28ms (35.5pps)
 TimeCor=-13.0s, PPS(min,max,med): 35,36,35
 Timeint/DSPdiff(mn,min,mx):28,28,33/28,28,33
 Prof: 351 to 120689, NumProf(r/t): 17571/120338
 ProcTime/Recs: 14:38:01-14:46:16/87855-105425
 ADacqtime: 25ms; DRate: 198.4KB/s; Flags: 0, 0, 0
 Pulse: 275ns, IFfilt: 5.0MHz; ppPol: HH HV VV
 TxPol: HHVV, PRF: 20 10 20 10 kHz, Noiseflg:2,3
 Range: Delay 75m, Spacing 15m, Gates 100
 Ave. Pulses: 84, Rng/Prof Aspect@90m/s: 5.9

	Min	Max	Mean	Std	Varc%
hhN (dB)	-67.13	-63.98	-65.45	-75.47	10.0
vvN (dB)	-67.19	-63.80	-65.45	-75.45	10.0
hhL (dB)	-0.11	3.65	2.80	-6.30	12.3
vvL (dB)	4.35	6.00	5.99	-13.68	1.1
ppN (m/s)	-12.25	12.75	-0.04	4.16	
ppT (m/s)	-96.78	100.70	-0.30	32.83	
hh/vv (dB)	NaN	50.48	17.14	31.96	3034
vh/hh (dB)	NaN	-28.10	-33.14	-35.05	64.5
hv/vv (dB)	NaN	-33.11	-54.45	-45.88	718.
hnjmp (dB)			-0.16		
vnjmp (dB)			-0.15		