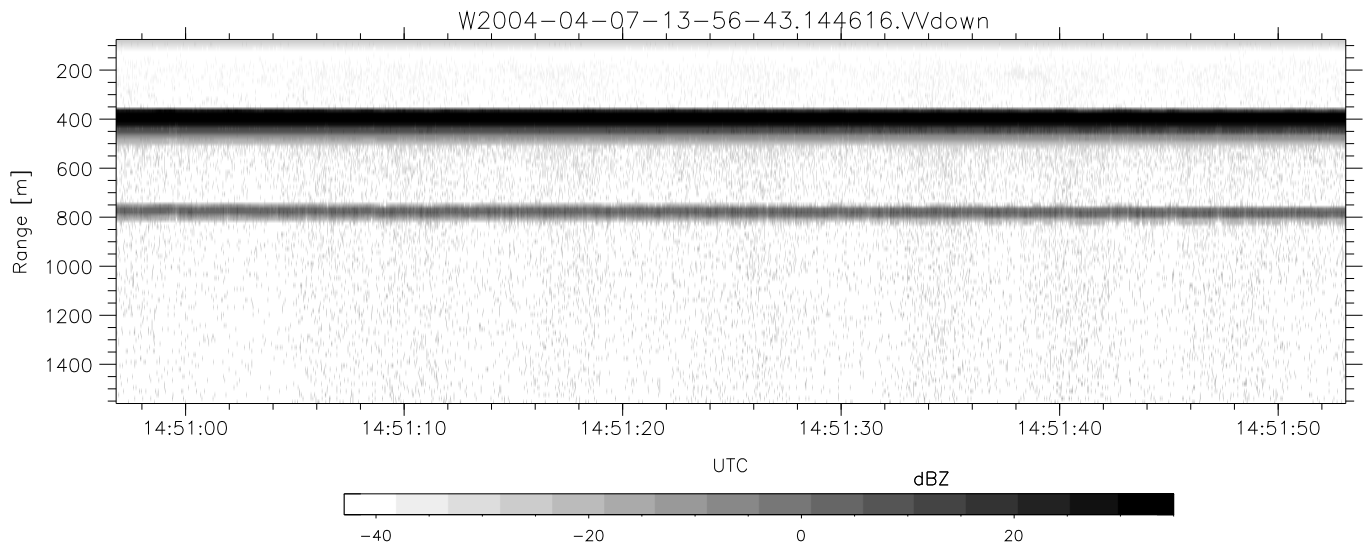
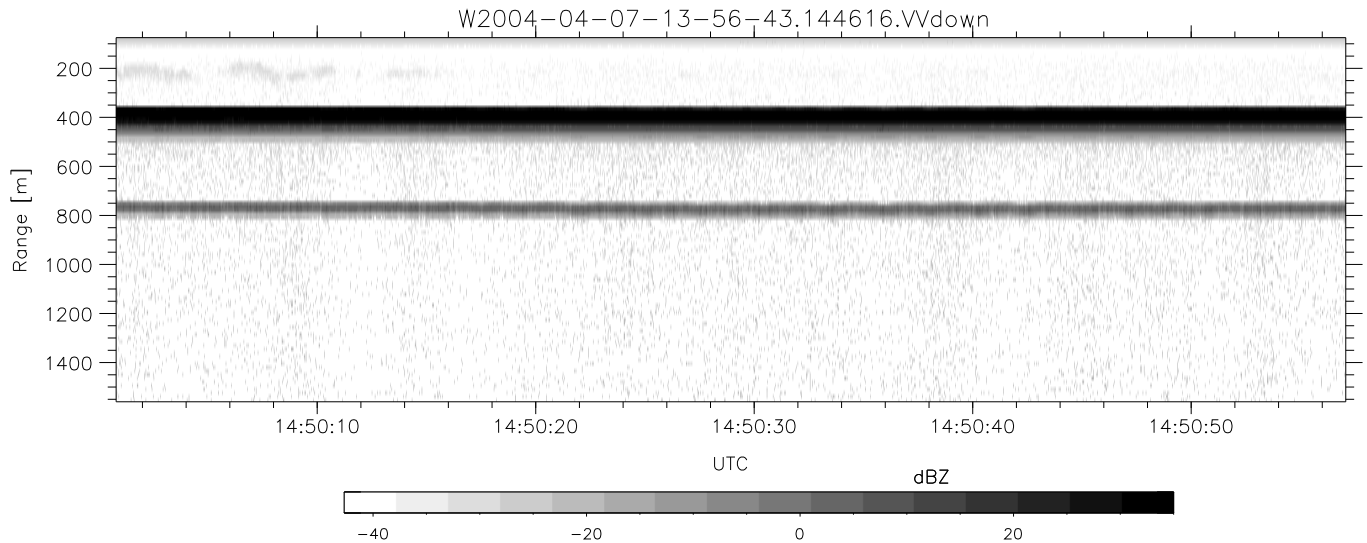
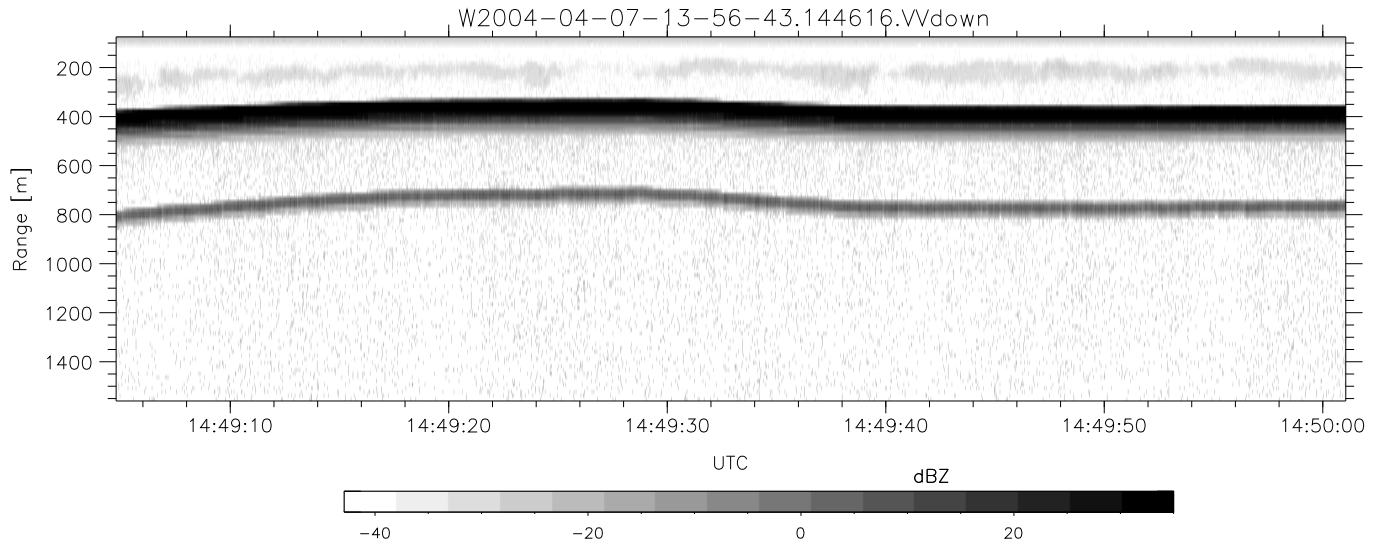


CIFEX 2004 Data (cal/250ns+2.5/100ns-3.5/500ns: 53.0,50.0)

W2004-04-07-13-56-43 - PPMAG4, IRIG:1/0/2
 UTC: 13:56:42.79 to 14:53:17.35, Dur: 3395s
 TimeLngth: 3394.47s, TimeInt: 28ms (35.5pps)
 TimeCor=-13.0s, PPS(min,max,med): 35,36,35
 Timeint/DSPdiff(mn,min,mx):28,28,28/28,28,28
 Prof: 351 to 120689, NumProf(r/t): 14912/120338
 ProcTime/Recs: 14:46:16-14:53:17/105426-120337
 ADacqtime: 25ms; DRate: 198.4KB/s; Flags: 0, 0, 0
 Pulse: 275ns, IFfilt: 5.0MHz; ppPol: HH HV VV
 TxPol: HHVV, PRF: 20 10 20 10 kHz, NoiseFlg:4,3
 Range: Delay 75m, Spacing 15m, Gates 100
 Ave. Pulses: 84, Rng/Prof Aspect@90m/s: 5.9

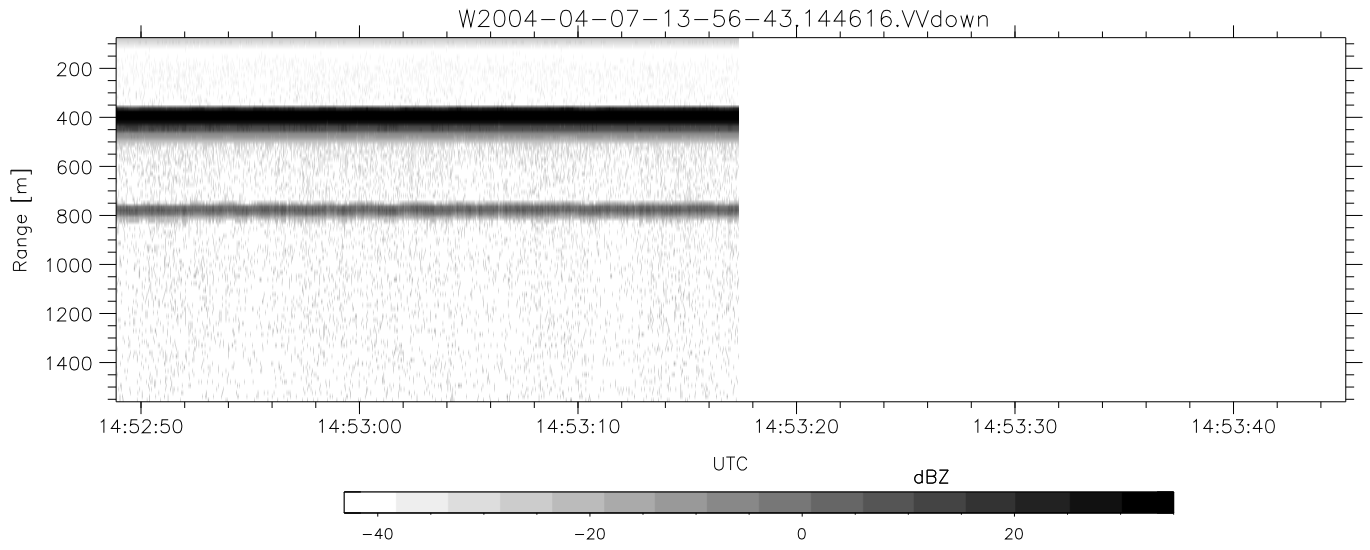
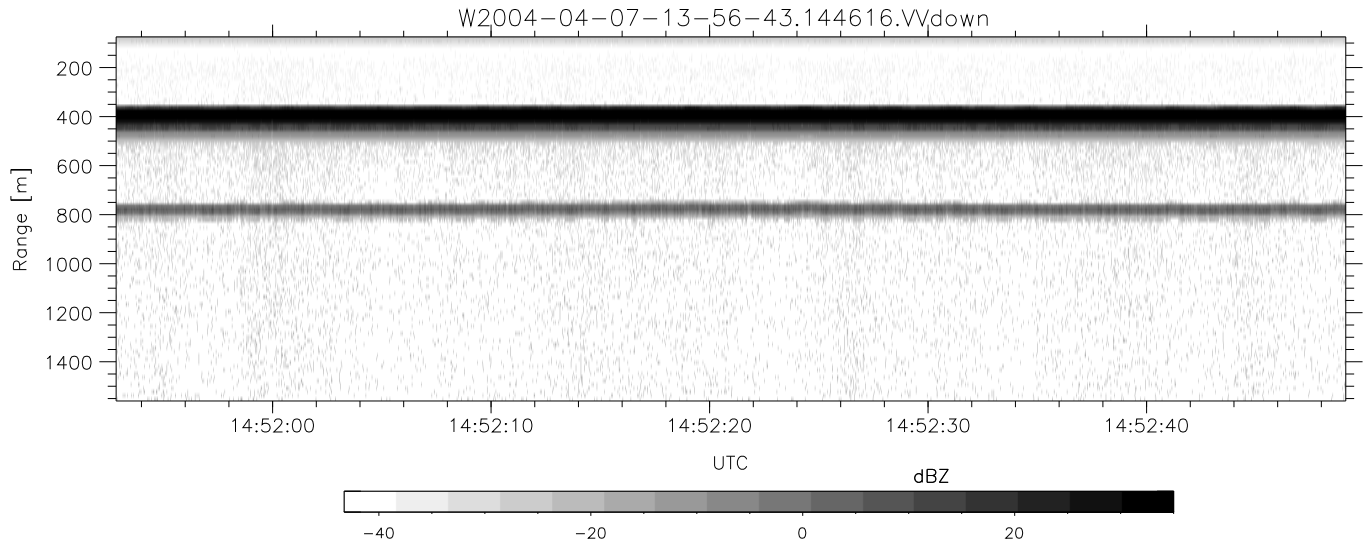
	Min	Max	Mean	Std	Varc%
hhN (dB)	-67.34	-63.96	-65.54	-75.58	9.9
vvN (dB)	-67.23	-63.79	-65.53	-75.57	9.9
hhL (dB)	-8.46	3.22	-1.68	-1.84	96.4
vvL (dB)	0.85	6.00	5.92	-4.65	8.8
ppN (m/s)	-12.65	12.50	-0.06	4.11	
ppT (m/s)	-99.95	98.77	-0.46	32.50	
hh/vv (dB)	NaN	36.90	17.93	27.37	879.
vh/hh (dB)	-99	-99	-99	-99	-99
hv/vv (dB)	NaN	-34.32	-56.13	-46.49	919.
hnjmp (dB)			0.16		
vnjmp (dB)			0.16		



CIFEX 2004 Data (cal/250ns+2.5/100ns-3.5/500ns: 53.0,50.0)

W2004-04-07-13-56-43 - PPMAG4, IRIG:1/0/2
 UTC: 13:56:42.79 to 14:53:17.35, Dur: 3395s
 TimeLngth: 3394.47s, TimeInt: 28ms (35.5pps)
 TimeCor=-13.0s, PPS(min,max,med): 35,36,35
 Timeint/DSPdiff(mn,min,mx):28,28,28/28,28,28
 Prof: 351 to 120689, NumProf(r/t): 14912/120338
 ProcTime/Recs: 14:46:16-14:53:17/105426-120337
 ADacqtime: 25ms; DRate: 198.4KB/s; Flags: 0, 0, 0
 Pulse: 275ns, IFilt: 5.0MHz; ppPol: HH HV VV
 TxPol: HHVV, PRF: 20 10 20 10 kHz, NoiseFlg:4,3
 Range: Delay 75m, Spacing 15m, Gates 100
 Ave. Pulses: 84, Rng/Prof Aspect@90m/s: 5.9

	Min	Max	Mean	Std	Varc%
hhN (dB)	-67.34	-63.96	-65.54	-75.58	9.9
vvN (dB)	-67.23	-63.79	-65.53	-75.57	9.9
hhL (dB)	-8.46	3.22	-1.68	-1.84	96.4
vvL (dB)	0.85	6.00	5.92	-4.65	8.8
ppN (m/s)	-12.65	12.50	-0.06	4.11	
ppT (m/s)	-99.95	98.77	-0.46	32.50	
hh/vv (dB)	NaN	36.90	17.93	27.37	879.
vh/hh (dB)	-99	-99	-99	-99	-99
hv/vv (dB)	NaN	-34.32	-56.13	-46.49	919.
hnjmp (dB)			0.16		
vnjmp (dB)			0.16		



CIFEX 2004 Data (cal/250ns+2.5/100ns-3.5/500ns: 53.0,50.0)

W2004-04-07-13-56-43 - PPMAG4, IRIG:1/0/2
 UTC: 13:56:42.79 to 14:53:17.35, Dur: 3395s
 TimeLngth: 3394.47s, TimeInt: 28ms (35.5pps)
 TimeCor=-13.0s, PPS(min,max,med): 35,36,35
 Timeint/DSPdiff(mn,min,mx):28,28,28/28,28,28
 Prof: 351 to 120689, NumProf(r/t): 14912/120338
 ProcTime/Recs: 14:46:16-14:53:17/105426-120337
 ADacqtime: 25ms; DRate: 198.4KB/s; Flags: 0, 0, 0
 Pulse: 275ns, IFfilt: 5.0MHz; ppPol: HH HV VV
 TxPol: HHVV, PRF: 20 10 20 10 kHz, NoiseFlg:4,3
 Range: Delay 75m, Spacing 15m, Gates 100
 Ave. Pulses: 84, Rng/Prof Aspect@90m/s: 5.9

	Min	Max	Mean	Std	Varc%
hhN (dB)	-67.34	-63.96	-65.54	-75.58	9.9
vvN (dB)	-67.23	-63.79	-65.53	-75.57	9.9
hhL (dB)	-8.46	3.22	-1.68	-1.84	96.4
vvL (dB)	0.85	6.00	5.92	-4.65	8.8
ppN (m/s)	-12.65	12.50	-0.06	4.11	
ppT (m/s)	-99.95	98.77	-0.46	32.50	
hh/vv (dB)	NaN	36.90	17.93	27.37	879.
vh/hh (dB)	-99	-99	-99	-99	-99
hv/vv (dB)	NaN	-34.32	-56.13	-46.49	919.
hnjmp (dB)			0.16		
vnjmp (dB)			0.16		