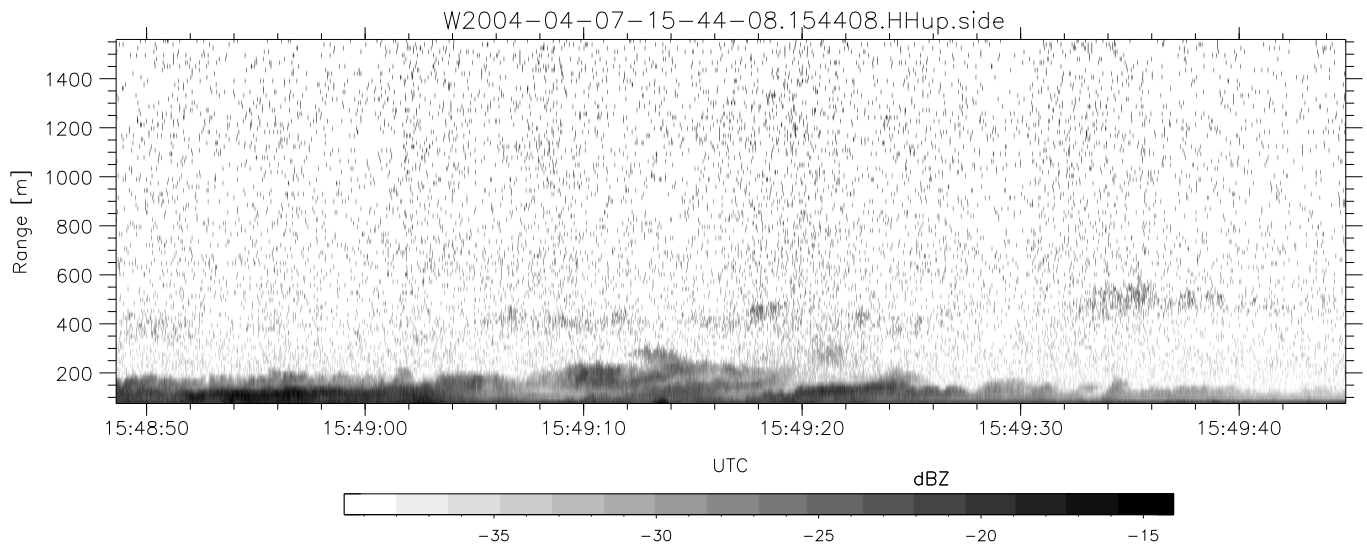
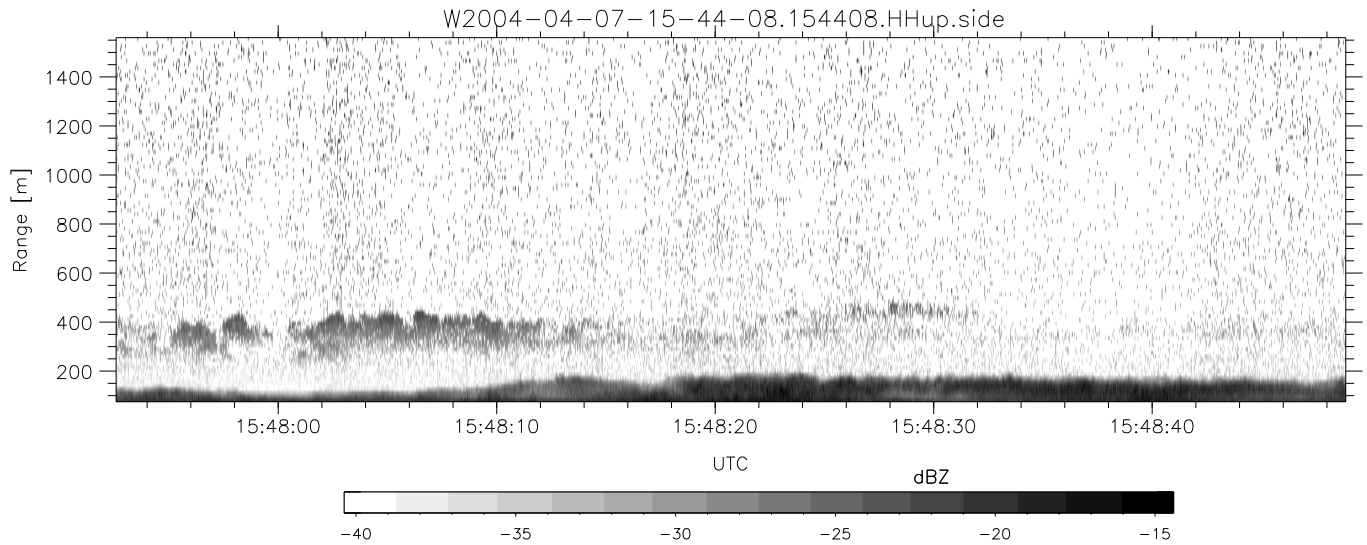
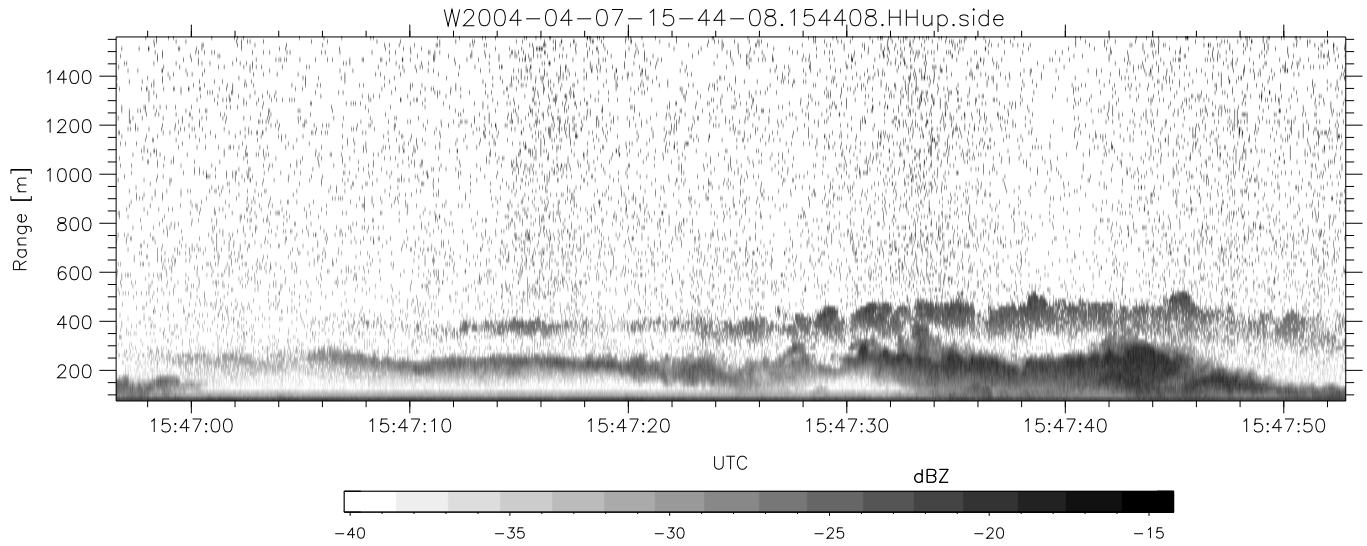


CIFEX 2004 Data (cal/250ns+2.5/100ns-3.5/500ns: 53.0,50.0)

W2004-04-07-15-44-08 - PPMAG4, IRIG:1/0/2
 UTC: 15:44:08.52 to 16:43:47.32, Dur: 3579s
 TimeLngth: 3578.84s, TimeInt: 28ms (35.4pps)
 TimeCor=-13.0s, PPS(min,max,med): 35,36,35
 Timeint/DSPdiff(mn,min,mx):28,28,28/28,28,28
 Prof: 350 to 127220, NumProf(r/t): 17571/126870
 ProcTime/Recs: 15:44:08-15:52:24/0-17570
 ADacqtime: 25ms; DRate: 198.4KB/s; Flags: 0, 0, 0
 Pulse: 275ns, IFilt: 5.0MHz; ppPol: HH HV VV
 TxPol: HHVV, PRF: 20 10 20 10 kHz, NoiseFlg:4,3
 Range: Delay 75m, Spacing 15m, Gates 100
 Ave. Pulses: 84, Rng/Prof Aspect@90m/s: 5.9

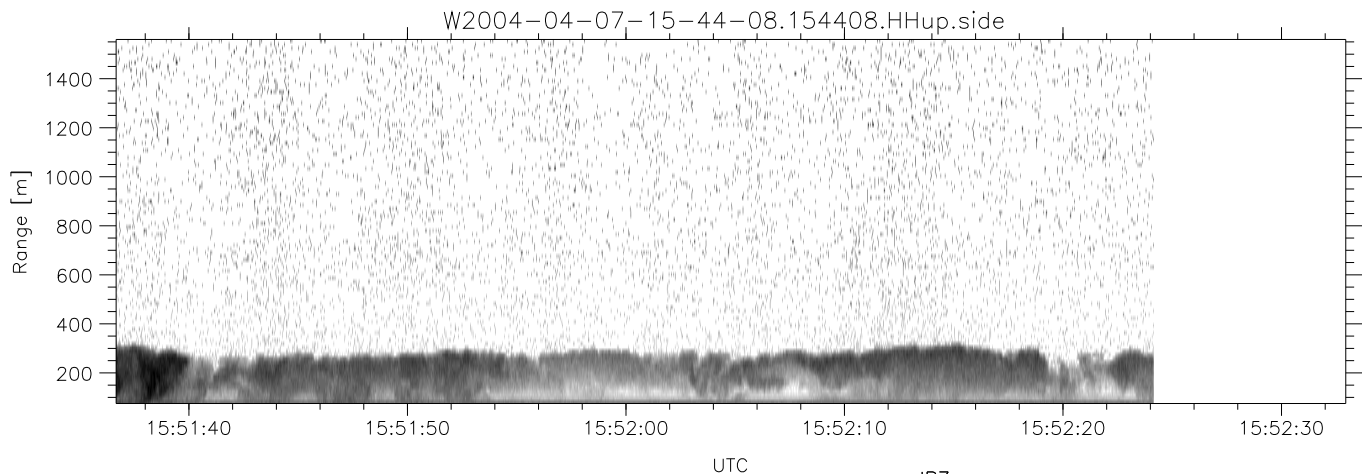
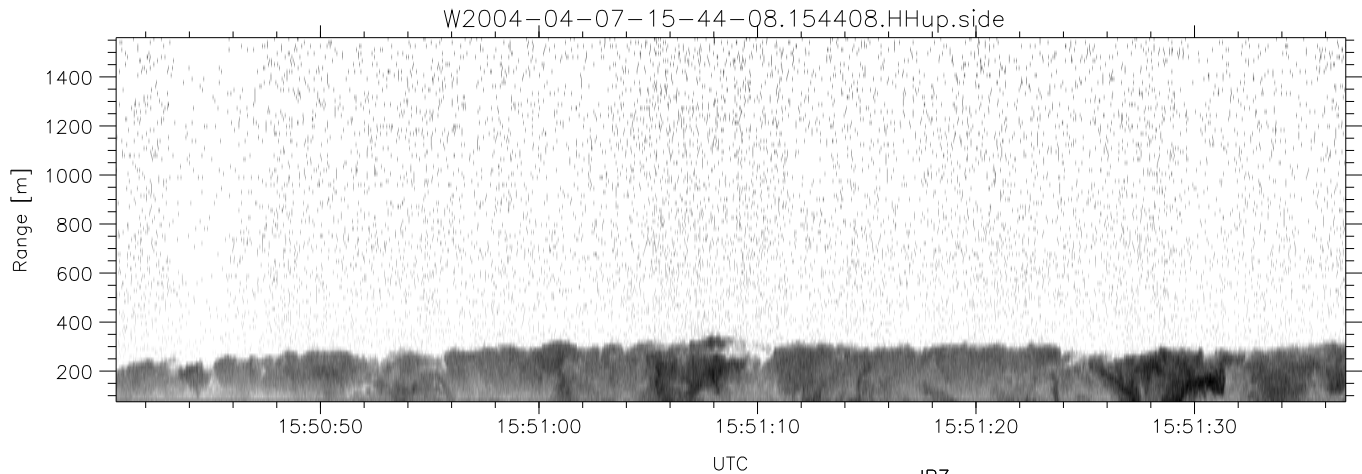
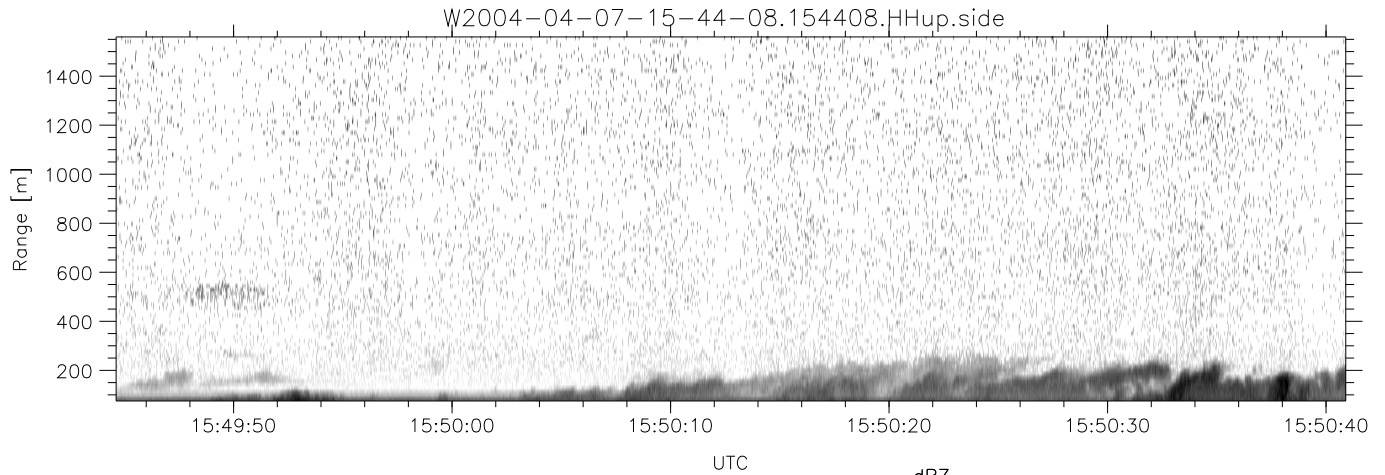
	Min	Max	Mean	Std	Varc%
hhN (dB)	-67.42	-64.45	-65.84	-75.92	9.8
vvN (dB)	-67.80	-64.41	-65.90	-75.88	10.0
hhL (dB)	-5.88	3.06	0.90	-3.45	36.7
vvL (dB)	-0.77	6.00	3.78	-1.09	32.6
ppN (m/s)	-12.61	12.82	-0.05	4.14	
ppT (m/s)	-99.66	101.30	-0.36	32.70	
hh/vv (dB)	NaN	67.42	23.38	45.20	1519
vh/hh (dB)	-99	-99	-99	-99	-99
hv/vv (dB)	NaN	-34.87	-58.26	-46.63	1453
hnjmp (dB)			-0.16		
vnjmp (dB)			-0.16		



CIFEX 2004 Data (cal/250ns+2.5/100ns-3.5/500ns: 53.0,50.0)

W2004-04-07-15-44-08 - PPMAG4, IRIG:1/0/2
 UTC: 15:44:08.52 to 16:43:47.32, Dur: 3579s
 TimeLngth: 3578.84s, TimeInt: 28ms (35.4pps)
 TimeCor=-13.0s, PPS(min,max,med): 35,36,35
 Timeint/DSPdiff(mn,min,mx):28,28,28/28,28,28
 Prof: 350 to 127220, NumProf(r/t): 17571/126870
 ProcTime/Recs: 15:44:08-15:52:24/0-17570
 ADacqtime: 25ms; DRate: 198.4KB/s; Flags: 0, 0, 0
 Pulse: 275ns, IFfilt: 5.0MHz; ppPol: HH HV VV
 TxPol: HHVV, PRF: 20 10 20 10 kHz, NoiseFlg:4,3
 Range: Delay 75m, Spacing 15m, Gates 100
 Ave. Pulses: 84, Rng/Prof Aspect@90m/s: 5.9

	Min	Max	Mean	Std	Varc%
hhN(dB)	-67.42	-64.45	-65.84	-75.92	9.8
vvN(dB)	-67.80	-64.41	-65.90	-75.88	10.0
hhL(dB)	-5.88	3.06	0.90	-3.45	36.7
vvL(dB)	-0.77	6.00	3.78	-1.09	32.6
ppN(m/s)	-12.61	12.82	-0.05	4.14	
ppT(m/s)	-99.66	101.30	-0.36	32.70	
hh/vv(dB)	NaN	67.42	23.38	45.20	1519
vh/hh(dB)	-99	-99	-99	-99	-99
hv/vv(dB)	NaN	-34.87	-58.26	-46.63	1453
hnjmp(dB)			-0.16		
vnjmp(dB)			-0.16		



CIFEX 2004 Data (cal/250ns+2.5/100ns-3.5/500ns: 53.0,50.0)

W2004-04-07-15-44-08 - PPMAG4, IRIG:1/0/2
 UTC: 15:44:08.52 to 16:43:47.32, Dur: 3579s
 TimeLngth: 3578.84s, TimeInt: 28ms (35.4pps)
 TimeCor=-13.0s, PPS(min,max,med): 35,36,35
 Timeint/DSPdiff(mn,min,mx):28,28,28/28,28,28
 Prof: 350 to 127220, NumProf(r/t): 17571/126870
 ProcTime/Recs: 15:44:08-15:52:24/0-17570
 ADacqtime: 25ms; DRate: 198.4KB/s; Flags: 0, 0, 0
 Pulse: 275ns, IFfilt: 5.0MHz; ppPol: HH HV VV
 TxPol: HHVV, PRF: 20 10 20 10 kHz, Noiseflg:4,3
 Range: Delay 75m, Spacing 15m, Gates 100
 Ave. Pulses: 84, Rng/Prof Aspect@90m/s: 5.9

	Min	Max	Mean	Std	Varc%
hhN(dB)	-67.42	-64.45	-65.84	-75.92	9.8
vvN(dB)	-67.80	-64.41	-65.90	-75.88	10.0
hhL(dB)	-5.88	3.06	0.90	-3.45	36.7
vvL(dB)	-0.77	6.00	3.78	-1.09	32.6
ppN(m/s)	-12.61	12.82	-0.05	4.14	
ppT(m/s)	-99.66	101.30	-0.36	32.70	
hh/vv(dB)	NaN	67.42	23.38	45.20	1519
vh/hh(dB)	-99	-99	-99	-99	-99
hv/vv(dB)	NaN	-34.87	-58.26	-46.63	1453
hnjmp(dB)			-0.16		
vnjmp(dB)			-0.16		