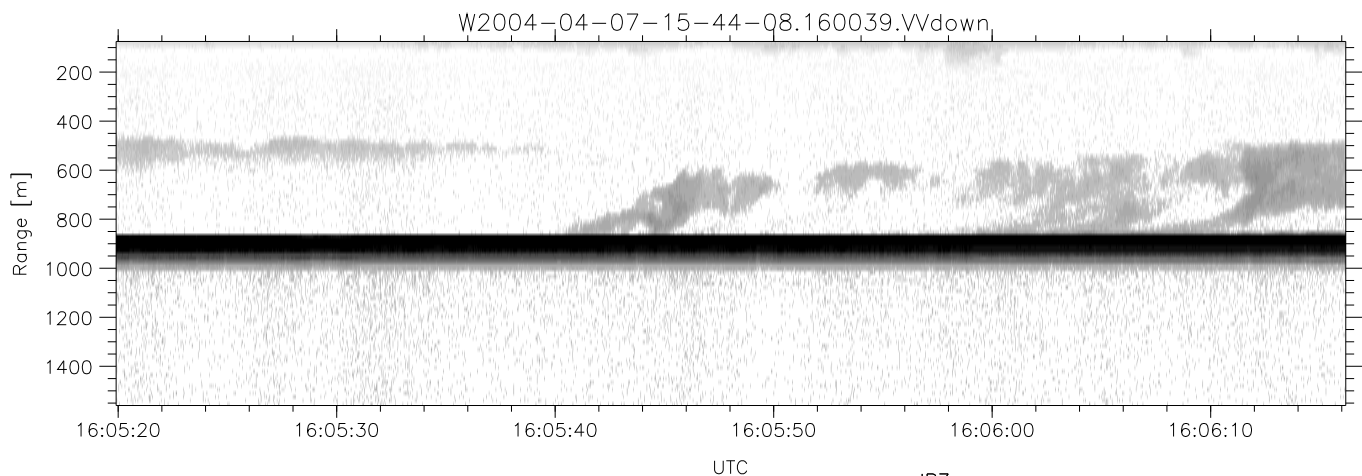
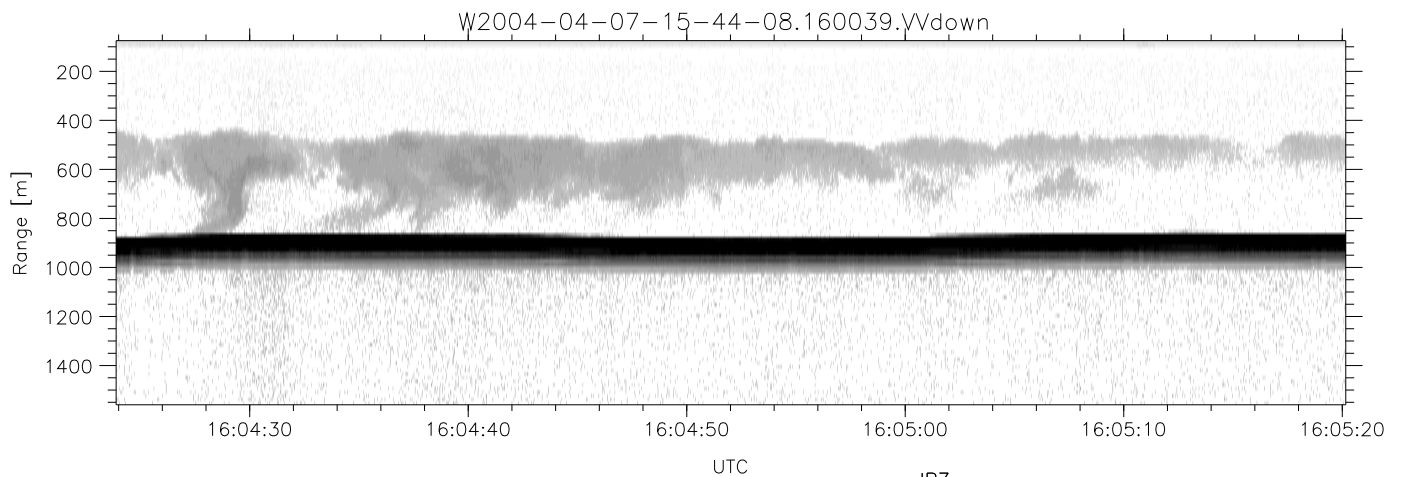
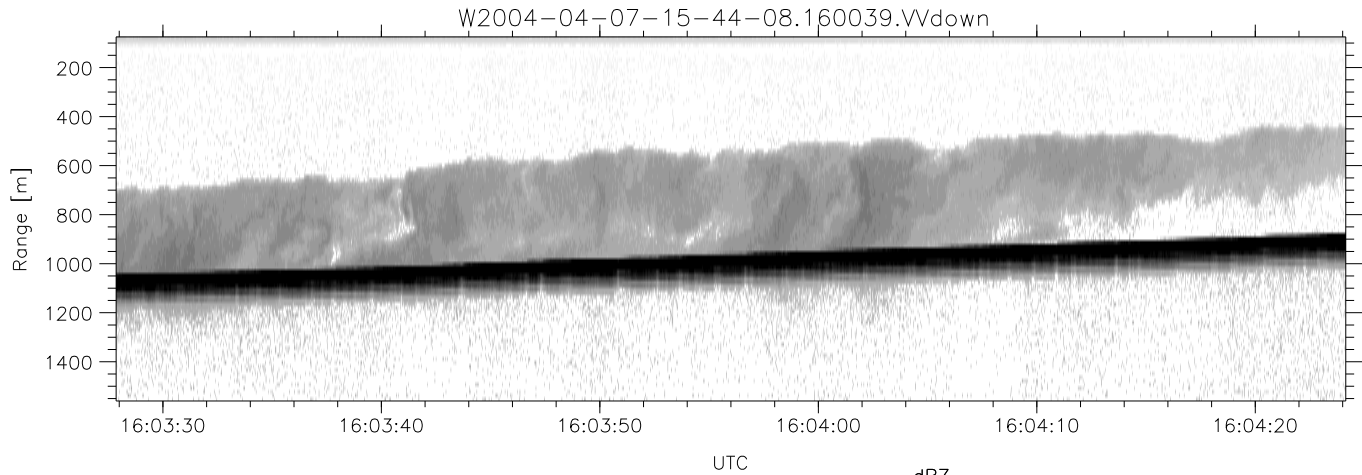


CIFEX 2004 Data (cal/250ns+2.5/100ns-3.5/500ns: 53.0,50.0)

W2004-04-07-15-44-08 - PPMAG4, IRIG:1/0/2
 UTC: 15:44:08.52 to 16:43:47.32, Dur: 3579s
 TimeLngth: 3578.72s, TimeInt: 28ms (35.5pps)
 TimeCor=-13.0s, PPS(min,max,med): 35,36,35
 Timeint/DSPdiff(mn,min,mx):28,28,33/28,28,33
 Prof: 350 to 127220, NumProf(r/t): 17571/126870
 ProcTime/Recs: 16:00:39-16:08:55/35142-52712
 ADacqtime: 25ms; DRate: 198.4KB/s; Flags: 0, 0, 0
 Pulse: 275ns, IFilt: 5.0MHz; ppPol: HH HV VV
 TxPol: HHVV, PRF: 20 10 20 10 kHz, NoiseFlg:2,2
 Range: Delay 75m, Spacing 15m, Gates 100
 Ave. Pulses: 84, Rng/Prof Aspect@90m/s: 5.9

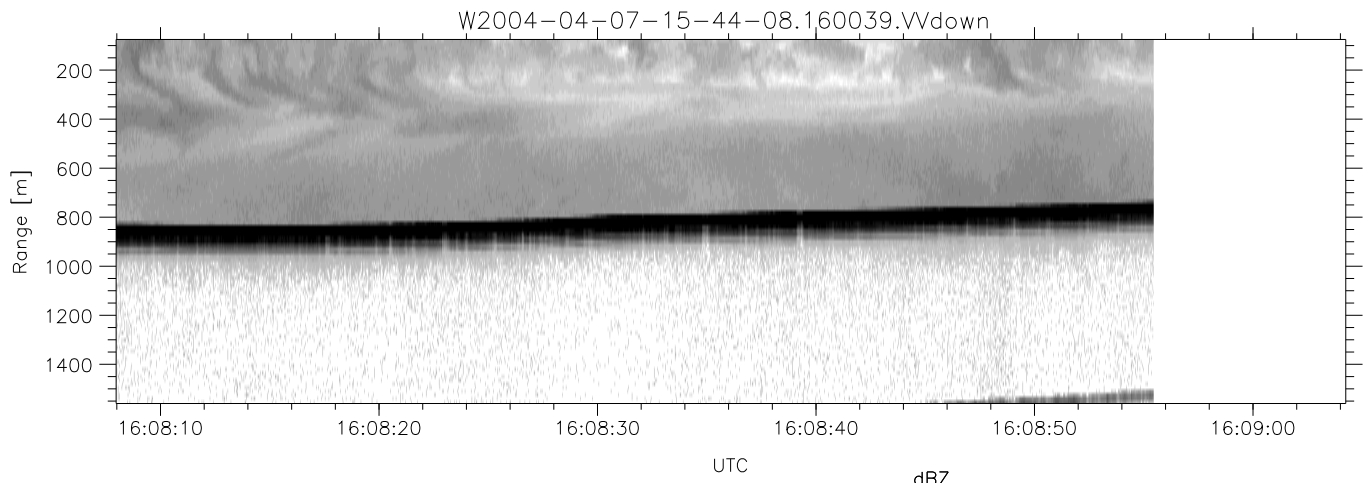
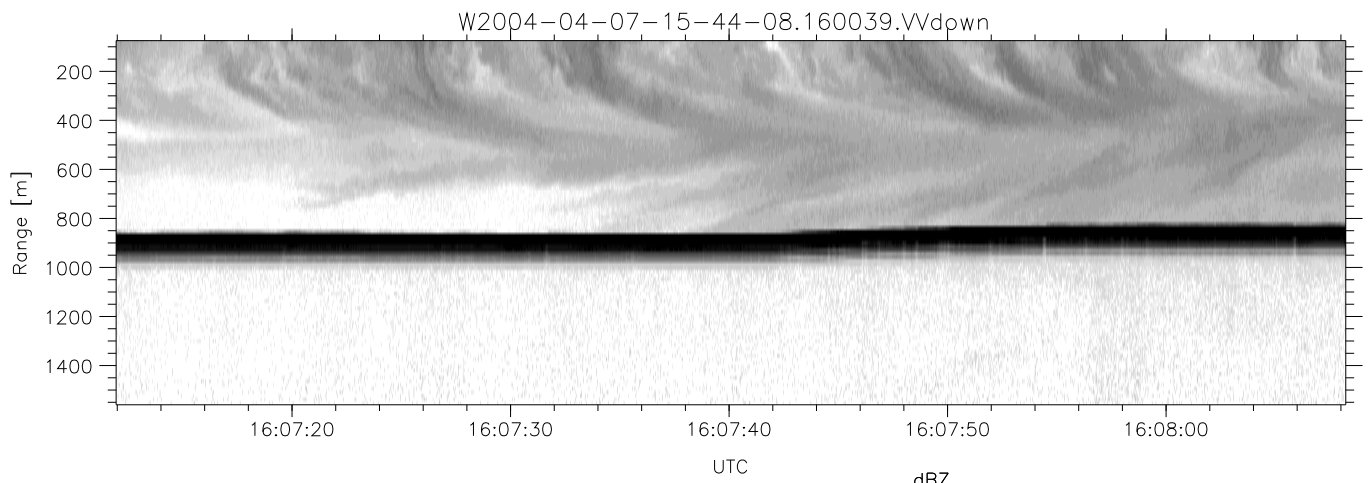
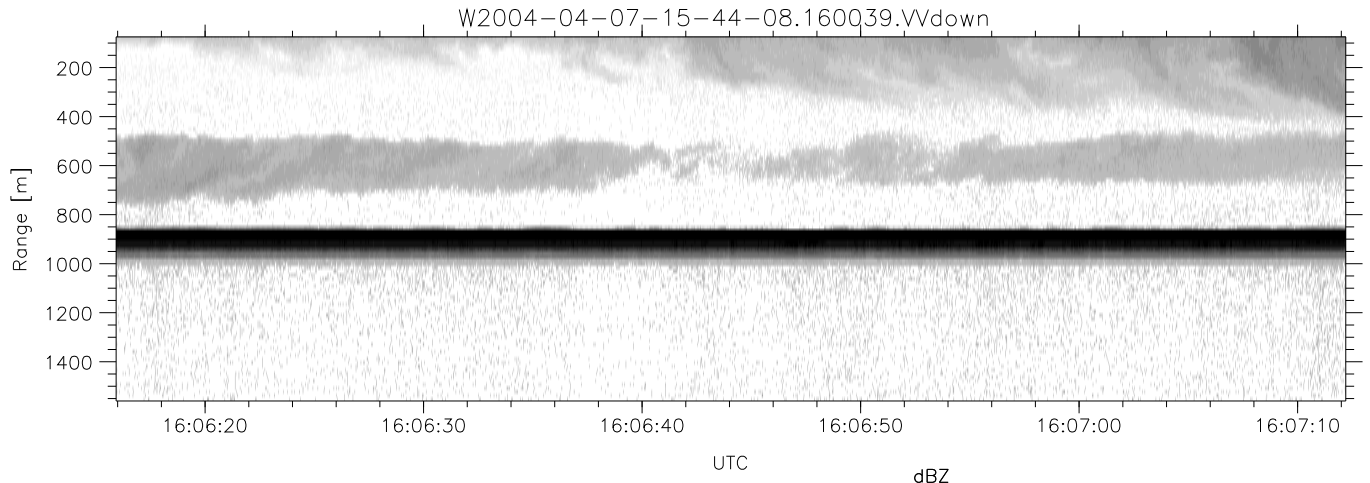
	Min	Max	Mean	Std	Varc%
hhN(dB)	-67.77	-64.25	-65.85	-75.87	10.0
vvN(dB)	-67.70	-64.14	-65.90	-75.90	10.0
hhL(dB)	-2.74	3.40	1.11	-3.26	36.5
vvL(dB)	-1.34	6.00	3.86	0.50	46.1
ppN(m/s)	-12.91	12.30	0.00	4.15	
ppT(m/s)	-102.0	97.17	0.03	32.77	
hh/vv(dB)	-99	-99	-99	-99	-99
vh/hh(dB)	-99	-99	-99	-99	-99
hv/vv(dB)	NaN	-33.90	-56.12	-45.87	1059
hnjmp(dB)			-0.14		
vnjmp(dB)			-0.15		



CIFEX 2004 Data (cal/250ns+2.5/100ns-3.5/500ns: 53.0,50.0)

W2004-04-07-15-44-08 - PPMAG4, IRIG:1/0/2
 UTC: 15:44:08.52 to 16:43:47.32, Dur: 3579s
 TimeLngth: 3578.72s, TimeInt: 28ms (35.5pps)
 TimeCor=-13.0s, PPS(min,max,med): 35,36,35
 Timeint/DSPdiff(mn,min,mx):28,28,33/28,28,33
 Prof: 350 to 127220, NumProf(r/t): 17571/126870
 ProcTime/Recs: 16:00:39-16:08:55/35142-52712
 ADacqtime: 25ms; DRate: 198.4KB/s; Flags: 0, 0, 0
 Pulse: 275ns, IFilt: 5.0MHz; ppPol: HH HV VV
 TxPol: HHV, PRF: 20 10 20 10 kHz, NoiseFlg:2,2
 Range: Delay 75m, Spacing 15m, Gates 100
 Ave. Pulses: 84, Rng/Prof Aspect@90m/s: 5.9

	Min	Max	Mean	Std	Varc%
hhN (dB)	-67.77	-64.25	-65.85	-75.87	10.0
vvN (dB)	-67.70	-64.14	-65.90	-75.90	10.0
hhL (dB)	-2.74	3.40	1.11	-3.26	36.5
vvL (dB)	-1.34	6.00	3.86	0.50	46.1
ppN (m/s)	-12.91	12.30	0.00	4.15	
ppT (m/s)	-102.0	97.17	0.03	32.77	
hh/vv (dB)	-99	-99	-99	-99	-99
vh/hh (dB)	-99	-99	-99	-99	-99
hv/vv (dB)	NaN	-33.90	-56.12	-45.87	1059
hnjmp (dB)			-0.14		
vnjmp (dB)			-0.15		



CIFEX 2004 Data (cal/250ns+2.5/100ns-3.5/500ns: 53.0,50.0)

W2004-04-07-15-44-08 - PPMAG4, IRIG:1/0/2
 UTC: 15:44:08.52 to 16:43:47.32, Dur: 3579s
 TimeLngth: 3578.72s, TimeInt: 28ms (35.5pps)
 TimeCor=-13.0s, PPS(min,max,med): 35,36,35
 Timeint/DSPdiff(mn,min,mx):28,28,33/28,28,33
 Prof: 350 to 127220, NumProf(r/t): 17571/126870
 ProcTime/Recs: 16:00:39-16:08:55/35142-52712
 ADacqtime: 25ms; DRate: 198.4KB/s; Flags: 0, 0, 0
 Pulse: 275ns, IFfilt: 5.0MHz; ppPol: HH HV VV
 TxPol: HHVV, PRF: 20 10 20 10 kHz, NoiseFlg:2,2
 Range: Delay 75m, Spacing 15m, Gates 100
 Ave. Pulses: 84, Rng/Prof Aspect@90m/s: 5.9

	Min	Max	Mean	Std	Varc%
hhN (dB)	-67.77	-64.25	-65.85	-75.87	10.0
vvN (dB)	-67.70	-64.14	-65.90	-75.90	10.0
hhL (dB)	-2.74	3.40	1.11	-3.26	36.5
vvL (dB)	-1.34	6.00	3.86	0.50	46.1
ppN (m/s)	-12.91	12.30	0.00	4.15	
ppT (m/s)	-102.0	97.17	0.03	32.77	
hh/vv (dB)	-99	-99	-99	-99	-99
vh/hh (dB)	-99	-99	-99	-99	-99
hv/vv (dB)	NaN	-33.90	-56.12	-45.87	1059
hnjmp (dB)			-0.14		
vnjmp (dB)			-0.15		