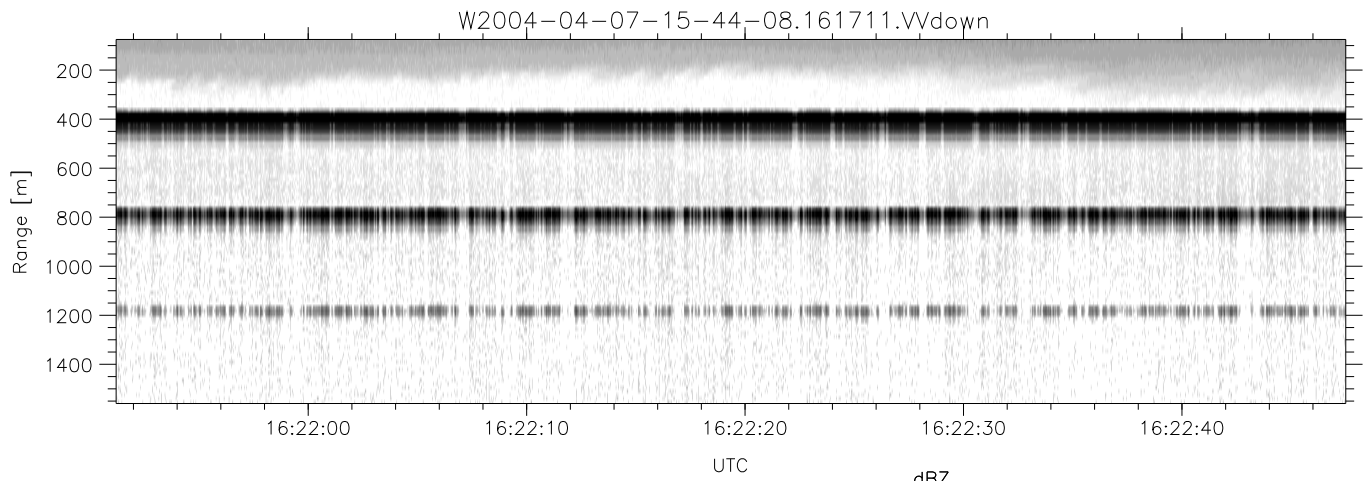
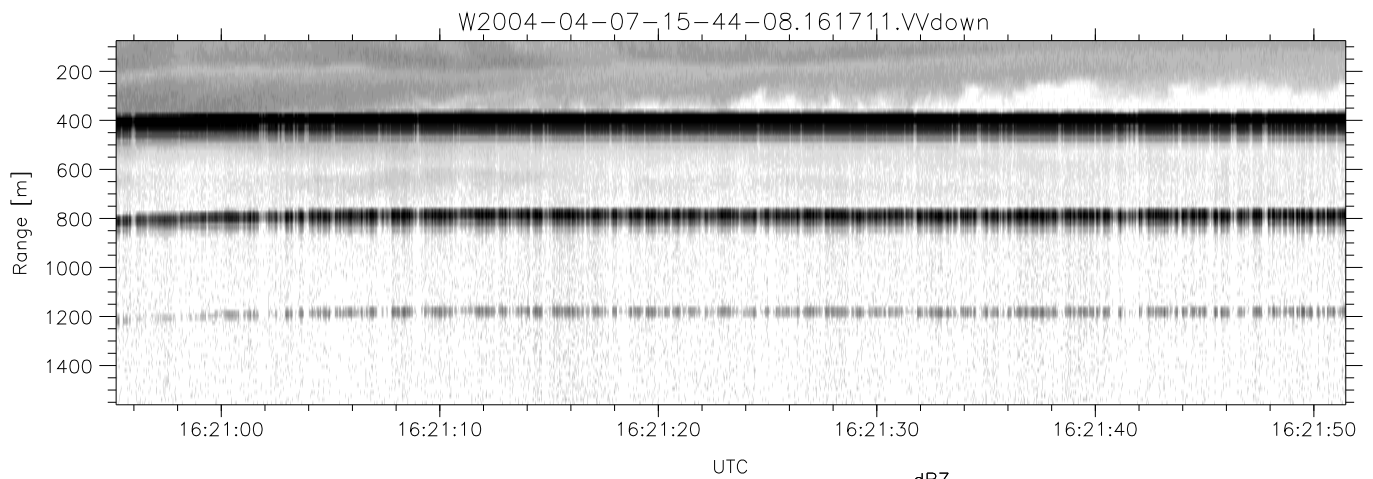
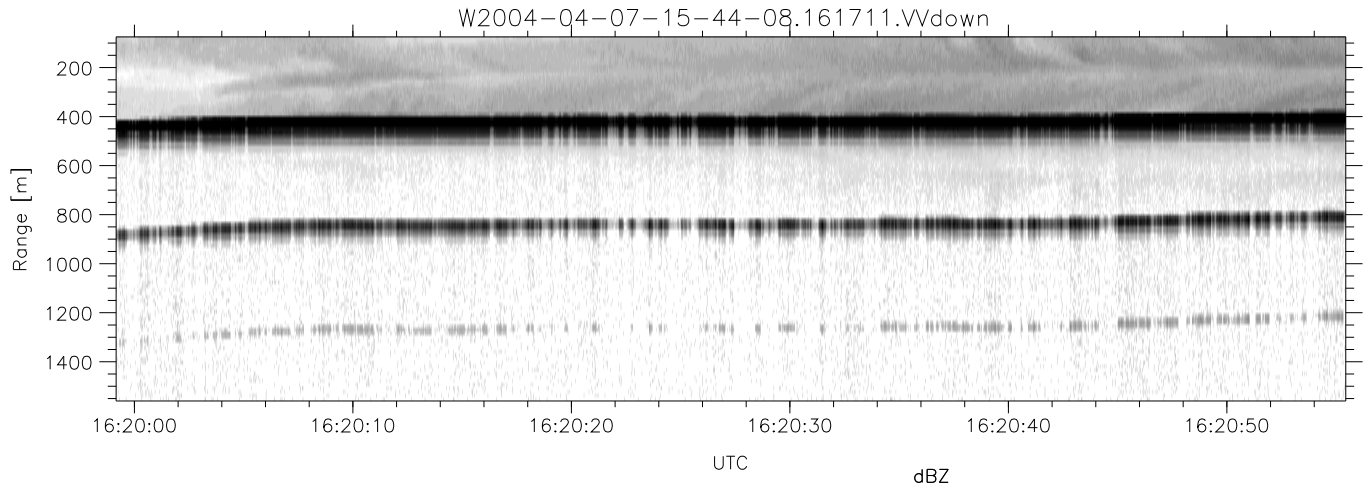


CIFEX 2004 Data (cal/250ns+2.5/100ns-3.5/500ns: 53.0,50.0)

W2004-04-07-15-44-08 - PPMAG4, IRIG:1/0/2
 UTC: 15:44:08.52 to 16:43:47.32, Dur: 3579s
 TimeLngth: 3578.72s, TimeInt: 28ms (35.5pps)
 TimeCor=-13.0s, PPS(min,max,med): 35,36,35
 Timeint/DSPdiff(mn,min,mx):28,28,43/28,28,39
 Prof: 350 to 127220, NumProf(r/t): 17571/126870
 ProcTime/Recs: 16:17:11-16:25:26/70284-87854
 ADacqtime: 25ms; DRate: 198.4KB/s; Flags: 0, 0, 0
 Pulse: 275ns, IFilt: 5.0MHz; ppPol: HH HV VV
 TxPol: HHVV, PRF: 20 10 20 10 kHz, NoiseFlg:4,2
 Range: Delay 75m, Spacing 15m, Gates 100
 Ave. Pulses: 84, Rng/Prof Aspect@90m/s: 5.9

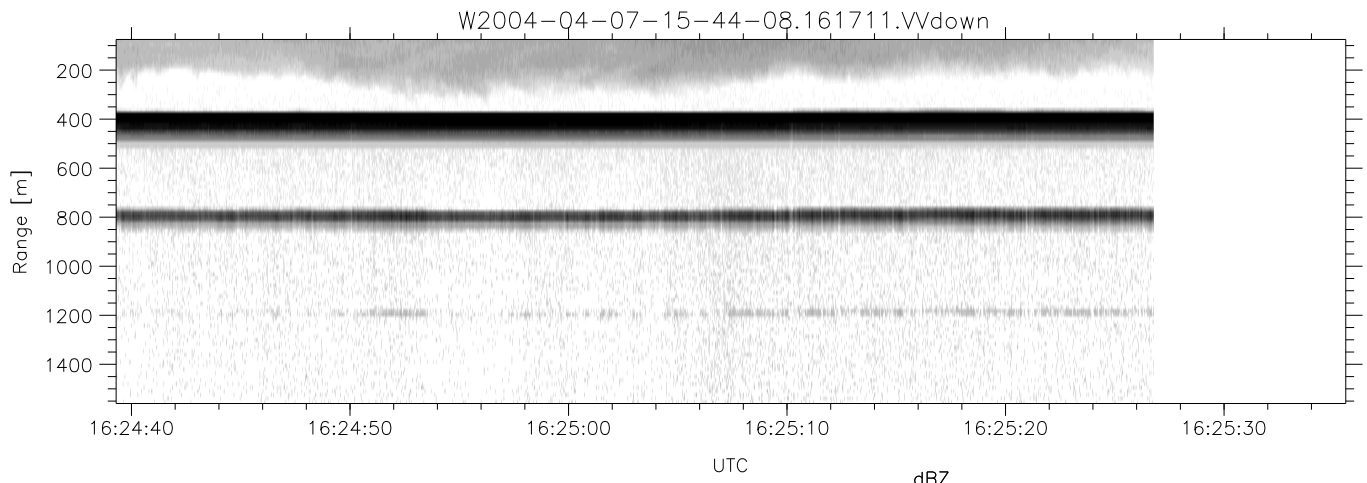
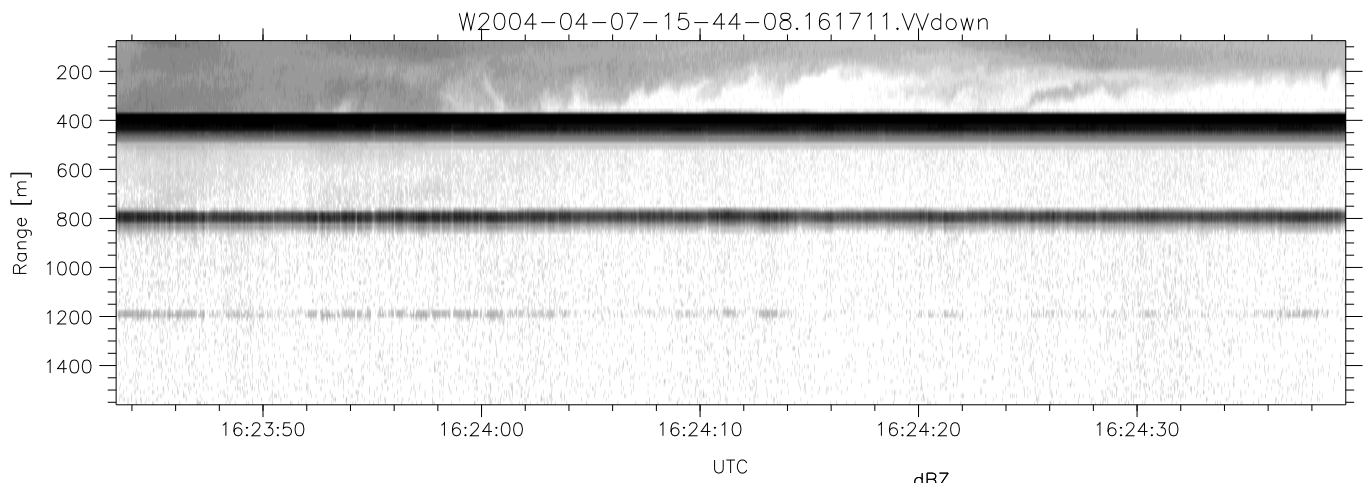
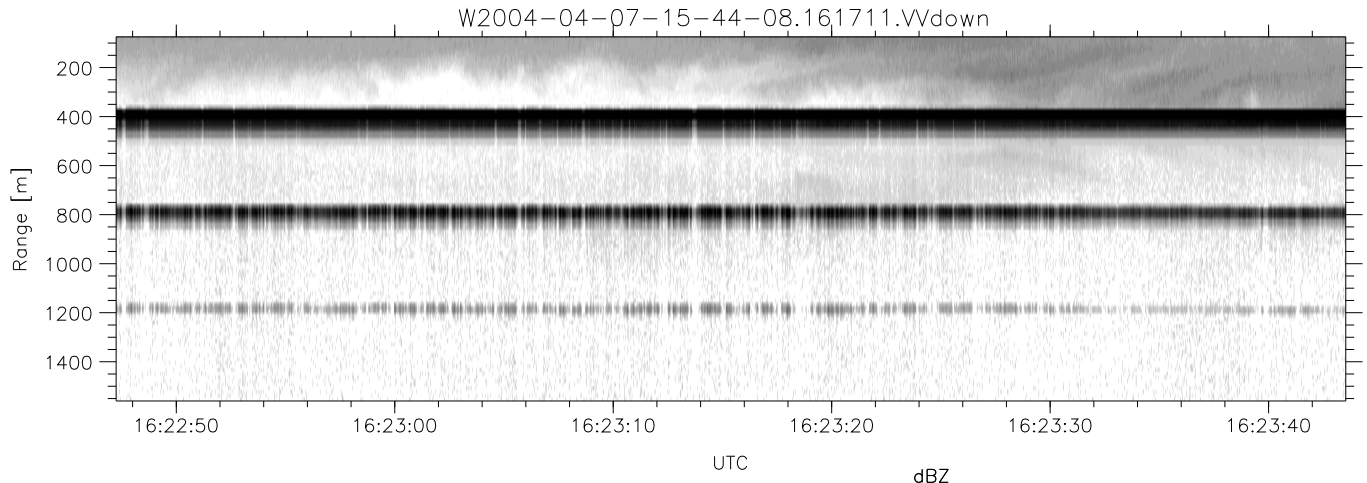
	Min	Max	Mean	Std	Varc%
hhN (dB)	-67.57	-64.13	-65.82	-75.84	10.0
vvN (dB)	-68.03	-64.45	-65.95	-75.89	10.2
hhL (dB)	-7.47	-2.55	-4.28	-11.16	20.5
vvL (dB)	5.72	6.00	6.00	-23.45	0.1
ppN (m/s)	-12.29	12.48	-0.02	4.10	
ppT (m/s)	-97.10	98.58	-0.12	32.40	
hh/vv (dB)	NaN	54.44	14.07	33.69	9151
vh/hh (dB)	NaN	-27.08	-33.14	-35.11	63.6
hv/vv (dB)	NaN	-34.13	-54.53	-46.05	704.
hn_jmp (dB)			-0.16		
vn_jmp (dB)			-0.14		



CIFEX 2004 Data (cal/250ns+2.5/100ns-3.5/500ns: 53.0,50.0)

W2004-04-07-15-44-08 - PPMAG4, IRIG:1/0/2
 UTC: 15:44:08.52 to 16:43:47.32, Dur: 3579s
 TimeLngth: 3578.72s, TimeInt: 28ms (35.5pps)
 TimeCor=-13.0s, PPS(min,max,med): 35,36,35
 Timeint/DSPdiff(mn,min,mx):28,28,43/28,28,39
 Prof: 350 to 127220, NumProf(r/t): 17571/126870
 ProcTime/Recs: 16:17:11-16:25:26/70284-87854
 ADacqtime: 25ms; DRate: 198.4KB/s; Flags: 0, 0, 0
 Pulse: 275ns, IFfilt: 5.0MHz; ppPol: HH HV VV
 TxPol: HHVV, PRF: 20 10 20 10 kHz, Noiseflg:4,2
 Range: Delay 75m, Spacing 15m, Gates 100
 Ave. Pulses: 84, Rng/Prof Aspect@90m/s: 5.9

	Min	Max	Mean	Std	Varc%
hhN (dB)	-67.57	-64.13	-65.82	-75.84	10.0
vvN (dB)	-68.03	-64.45	-65.95	-75.89	10.2
hhL (dB)	-7.47	-2.55	-4.28	-11.16	20.5
vvL (dB)	5.72	6.00	6.00	-23.45	0.1
ppN (m/s)	-12.29	12.48	-0.02	4.10	
ppT (m/s)	-97.10	98.58	-0.12	32.40	
hh/vv (dB)	NaN	54.44	14.07	33.69	9151
vh/hh (dB)	NaN	-27.08	-33.14	-35.11	63.6
hv/vv (dB)	NaN	-34.13	-54.53	-46.05	704.
hn_jmp (dB)			-0.16		
vn_jmp (dB)			-0.14		



CIFEX 2004 Data (cal/250ns+2.5/100ns-3.5/500ns: 53.0,50.0)

W2004-04-07-15-44-08 - PPMAG4, IRIG:1/0/2
 UTC: 15:44:08.52 to 16:43:47.32, Dur: 3579s
 TimeLngth: 3578.72s, TimeInt: 28ms (35.5pps)
 TimeCor=-13.0s, PPS(min,max,med): 35,36,35
 Timeint/DSPdiff(mn,min,mx):28,28,43/28,28,39
 Prof: 350 to 127220, NumProf(r/t): 17571/126870
 ProcTime/Recs: 16:17:11-16:25:26/70284-87854
 ADacqtime: 25ms; DRate: 198.4KB/s; Flags: 0, 0, 0
 Pulse: 275ns, IFfilt: 5.0MHz; ppPol: HH HV VV
 TxPol: HHVV, PRF: 20 10 20 10 kHz, Noiseflg:4,2
 Range: Delay 75m, Spacing 15m, Gates 100
 Ave. Pulses: 84, Rng/Prof Aspect@90m/s: 5.9

	Min	Max	Mean	Std	Varc%
hhN (dB)	-67.57	-64.13	-65.82	-75.84	10.0
vvN (dB)	-68.03	-64.45	-65.95	-75.89	10.2
hhL (dB)	-7.47	-2.55	-4.28	-11.16	20.5
vvL (dB)	5.72	6.00	6.00	-23.45	0.1
ppN (m/s)	-12.29	12.48	-0.02	4.10	
ppT (m/s)	-97.10	98.58	-0.12	32.40	
hh/vv (dB)	NaN	54.44	14.07	33.69	9151
vh/hh (dB)	NaN	-27.08	-33.14	-35.11	63.6
hv/vv (dB)	NaN	-34.13	-54.53	-46.05	704.
hnjmp (dB)			-0.16		
vnjmp (dB)			-0.14		