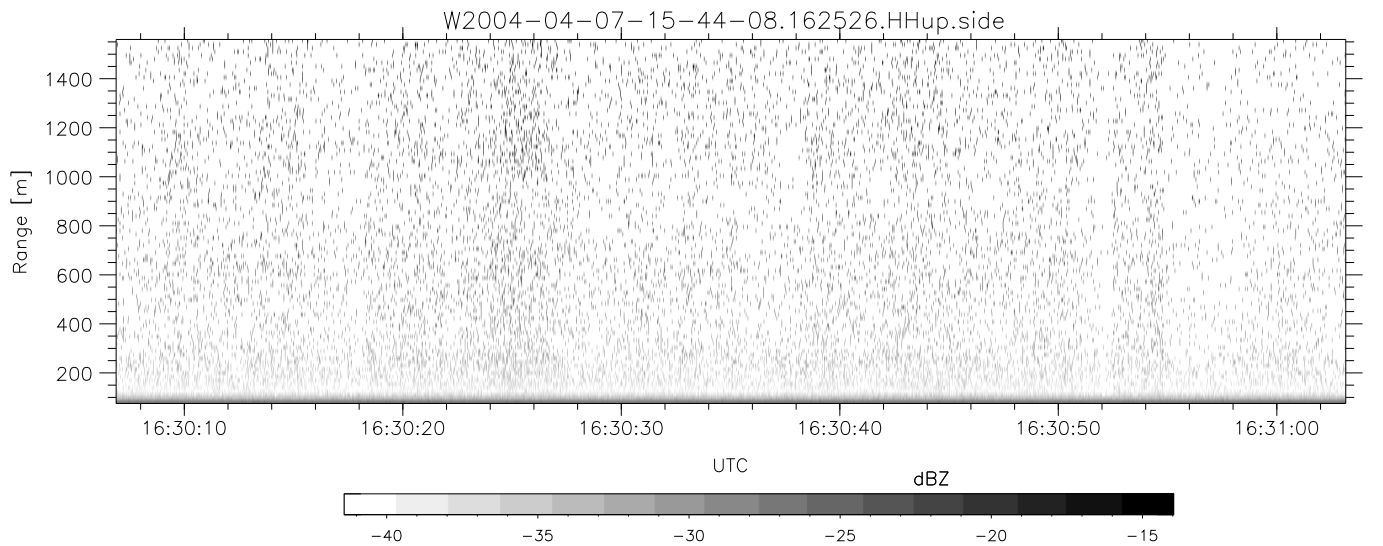
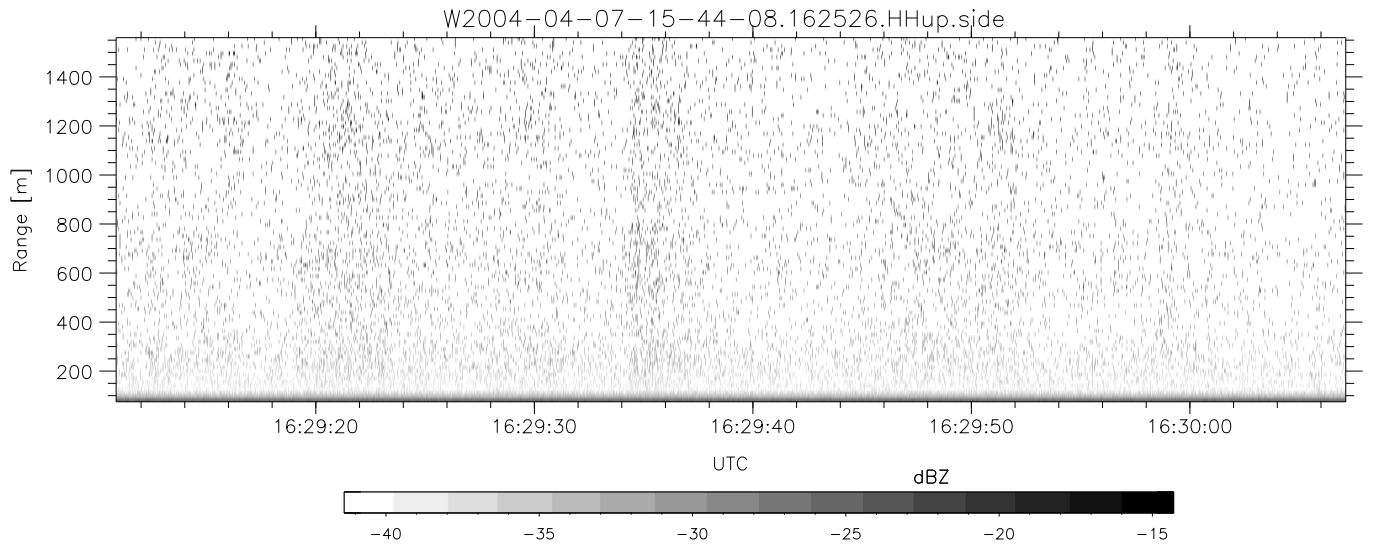
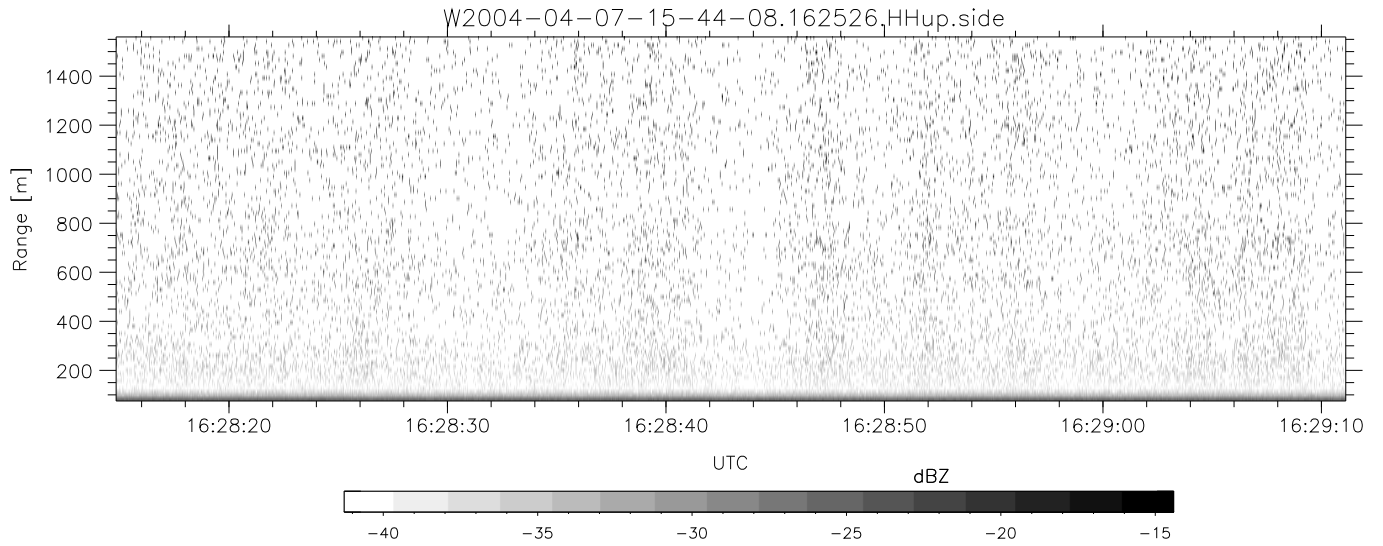


CIFEX 2004 Data (cal/250ns+2.5/100ns-3.5/500ns: 53.0,50.0)

W2004-04-07-15-44-08 - PPMAG4, IRIG:1/0/2  
 UTC: 15:44:08.52 to 16:43:47.32, Dur: 3579s  
 TimeLngth: 3578.84s, TimeInt: 28ms (35.4pps)  
 TimeCor=-13.0s, PPS(min,max,med): 35,36,35  
 Timeint/DSPdiff(mn,min,mx):28,28,28/28,28,28  
 Prof: 350 to 127220, NumProf(r/t): 17571/126870  
 ProcTime/Recs: 16:25:26-16:33:42/87855-105425  
 ADacqtime: 25ms; DRate: 198.4KB/s; Flags: 0, 0, 0  
 Pulse: 275ns, IFilt: 5.0MHz; ppPol: HH HV VV  
 TxPol: HHVV, PRF: 20 10 20 10 kHz, NoiseFlg:4,1  
 Range: Delay 75m, Spacing 15m, Gates 100  
 Ave. Pulses: 84, Rng/Prof Aspect@90m/s: 5.9

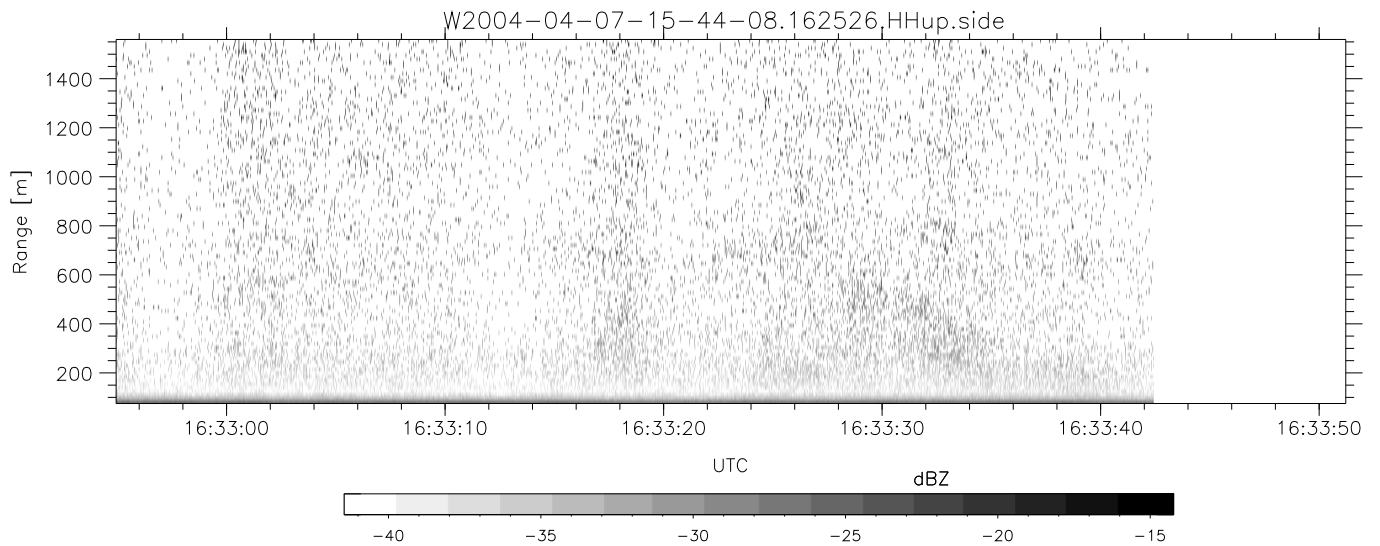
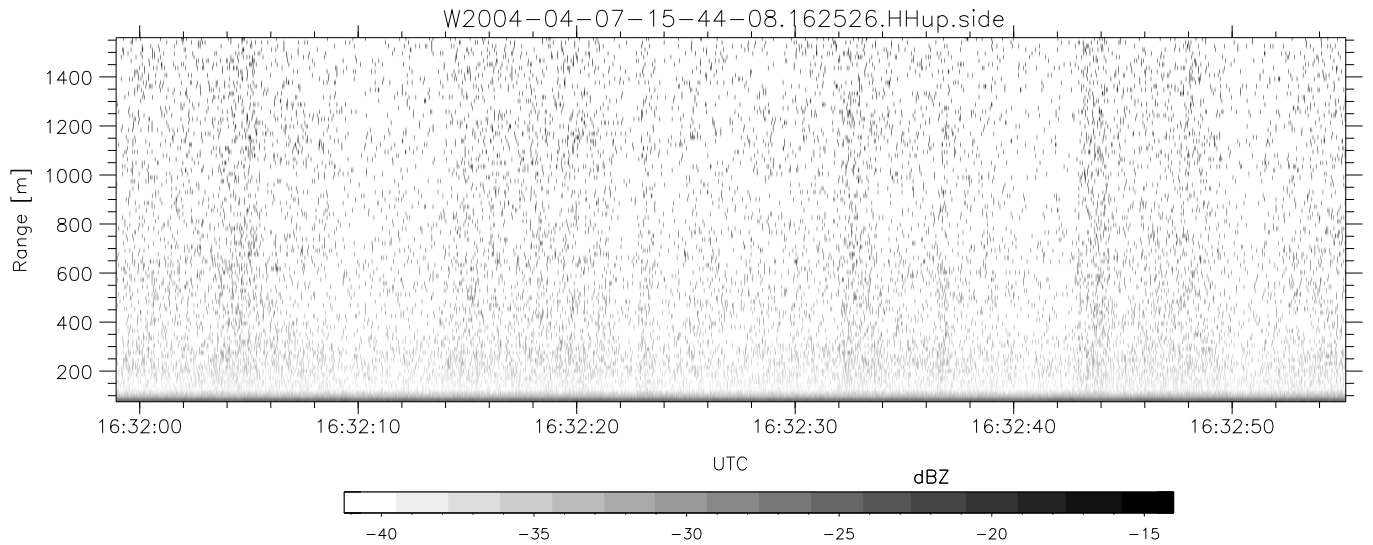
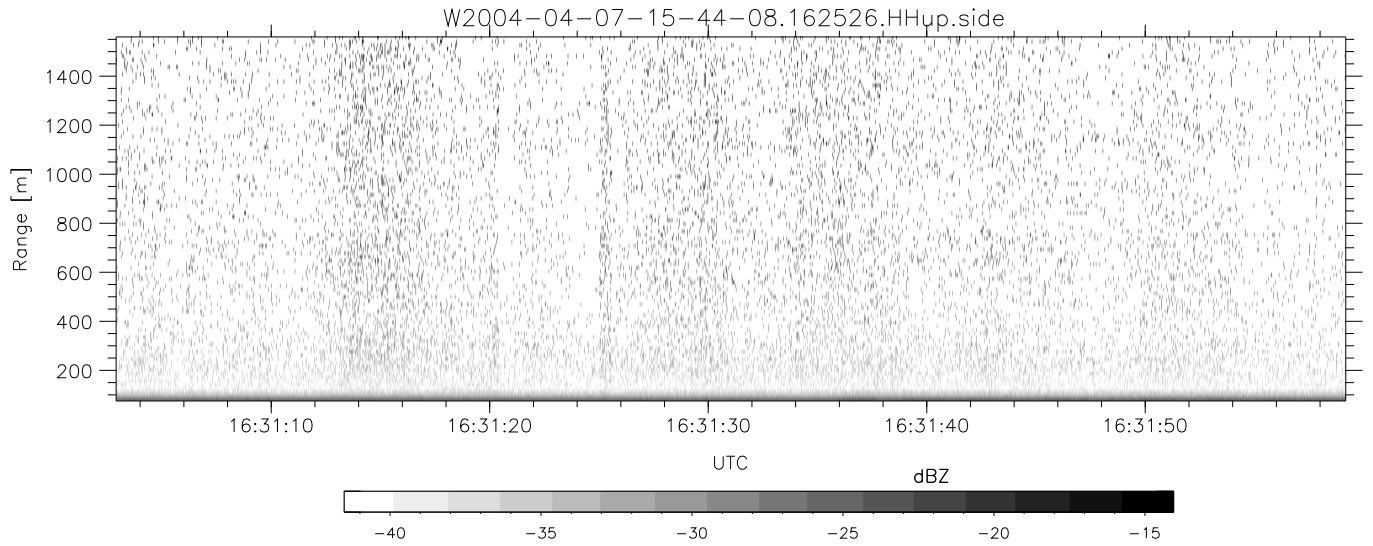
	Min	Max	Mean	Std	Varc%
hhN (dB)	-67.65	-64.12	-65.85	-75.90	9.9
vvN (dB)	-67.71	-63.89	-65.96	-75.75	10.5
hhL (dB)	-7.42	0.92	-1.86	-7.51	27.2
vvL (dB)	-2.28	6.00	2.84	0.23	54.8
ppN (m/s)	-12.65	12.45	-0.13	4.21	
ppT (m/s)	-99.97	98.32	-1.06	33.24	
hh/vv (dB)	-20.28	21.13	3.24	5.55	170.
vh/hh (dB)	-99	-99	-99	-99	-99
hv/vv (dB)	NaN	-34.09	-58.13	-45.75	1733
hnjmp (dB)			0.16		
vnjmp (dB)			0.15		



CIFEX 2004 Data (cal/250ns+2.5/100ns-3.5/500ns: 53.0,50.0)

W2004-04-07-15-44-08 - PPMAG4, IRIG:1/0/2  
 UTC: 15:44:08.52 to 16:43:47.32, Dur: 3579s  
 TimeLngth: 3578.84s, TimeInt: 28ms (35.4pps)  
 TimeCor=-13.0s, PPS(min,max,med): 35,36,35  
 Timeint/DSPdiff(mn,min,mx):28,28,28/28,28,28  
 Prof: 350 to 127220, NumProf(r/t): 17571/126870  
 ProcTime/Recs: 16:25:26-16:33:42/87855-105425  
 ADacqtime: 25ms; DRate: 198.4KB/s; Flags: 0, 0, 0  
 Pulse: 275ns, IFilt: 5.0MHz; ppPol: HH HV VV  
 TxPol: HHVV, PRF: 20 10 20 10 kHz, NoiseFlg:4,1  
 Range: Delay 75m, Spacing 15m, Gates 100  
 Ave. Pulses: 84, Rng/Prof Aspect@90m/s: 5.9

	Min	Max	Mean	Std	Varc%
hhN (dB)	-67.65	-64.12	-65.85	-75.90	9.9
vvN (dB)	-67.71	-63.89	-65.96	-75.75	10.5
hhL (dB)	-7.42	0.92	-1.86	-7.51	27.2
vvL (dB)	-2.28	6.00	2.84	0.23	54.8
ppN (m/s)	-12.65	12.45	-0.13	4.21	
ppT (m/s)	-99.97	98.32	-1.06	33.24	
hh/vv (dB)	-20.28	21.13	3.24	5.55	170.
vh/hh (dB)	-99	-99	-99	-99	-99
hv/vv (dB)	NaN	-34.09	-58.13	-45.75	1733
hnjmp (dB)			0.16		
vnjmp (dB)			0.15		



CIFEX 2004 Data (cal/250ns+2.5/100ns-3.5/500ns: 53.0,50.0)

W2004-04-07-15-44-08 - PPMAG4, IRIG:1/0/2  
 UTC: 15:44:08.52 to 16:43:47.32, Dur: 3579s  
 TimeLngth: 3578.84s, TimeInt: 28ms (35.4pps)  
 TimeCor=-13.0s, PPS(min,max,med): 35,36,35  
 Timeint/DSPdiff(mn,min,mx):28,28,28/28,28,28  
 Prof: 350 to 127220, NumProf(r/t): 17571/126870  
 ProcTime/Recs: 16:25:26-16:33:42/87855-105425  
 ADacqtime: 25ms; DRate: 198.4KB/s; Flags: 0, 0, 0  
 Pulse: 275ns, IFilt: 5.0MHz; ppPol: HH HV VV  
 TxPol: HHVV, PRF: 20 10 20 10 kHz, NoiseFlg:4,1  
 Range: Delay 75m, Spacing 15m, Gates 100  
 Ave. Pulses: 84, Rng/Prof Aspect@90m/s: 5.9

	Min	Max	Mean	Std	Varc%
hhN(dB)	-67.65	-64.12	-65.85	-75.90	9.9
vvN(dB)	-67.71	-63.89	-65.96	-75.75	10.5
hhL(dB)	-7.42	0.92	-1.86	-7.51	27.2
vvL(dB)	-2.28	6.00	2.84	0.23	54.8
ppN(m/s)	-12.65	12.45	-0.13	4.21	
ppT(m/s)	-99.97	98.32	-1.06	33.24	
hh/vv(dB)	-20.28	21.13	3.24	5.55	170.
vh/hh(dB)	-99	-99	-99	-99	-99
hv/vv(dB)	NaN	-34.09	-58.13	-45.75	1733
hnjmp(dB)			0.16		
vnjmp(dB)			0.15		