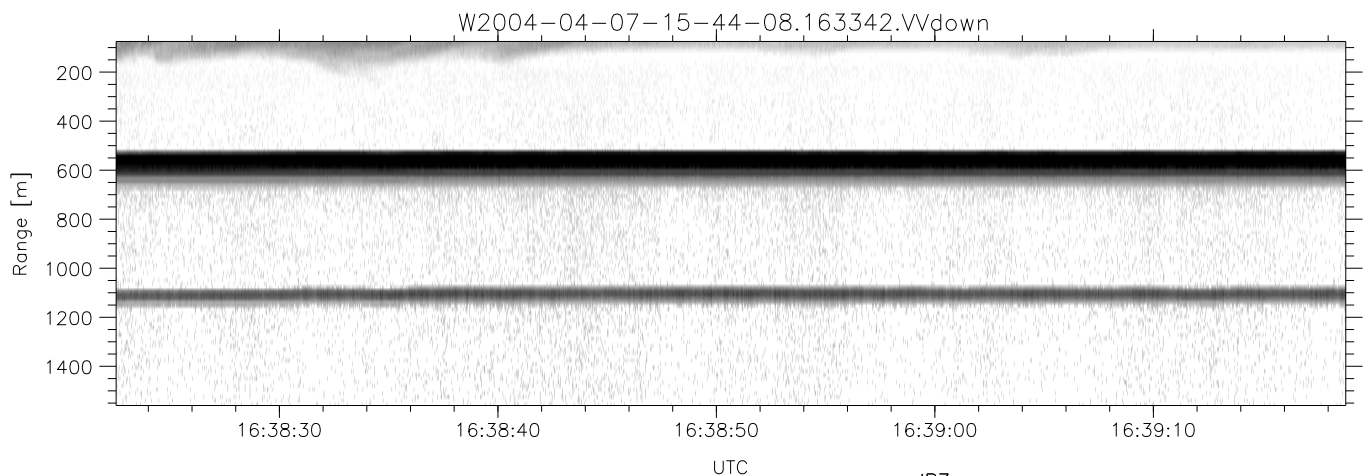
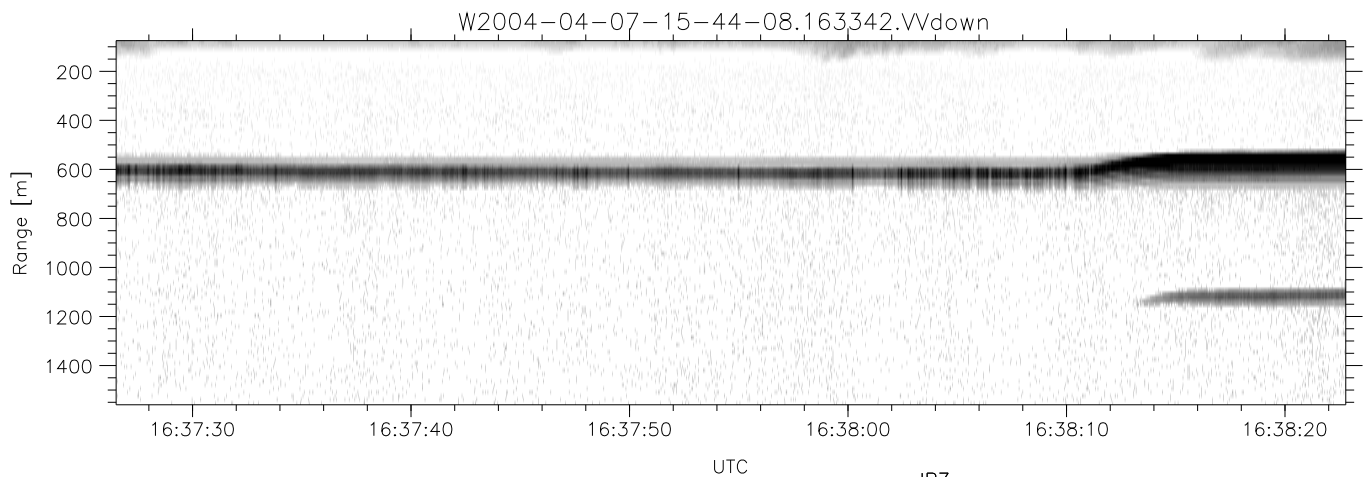
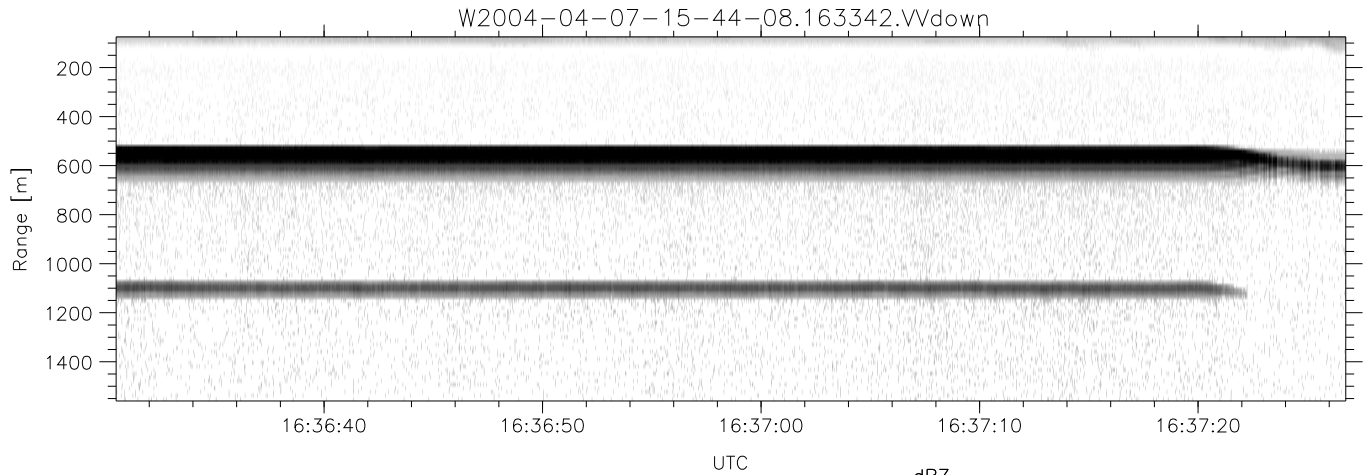


CIFEX 2004 Data (cal/250ns+2.5/100ns-3.5/500ns: 53.0,50.0)

W2004-04-07-15-44-08 - PPMAG4, IRIG:1/0/2
 UTC: 15:44:08.52 to 16:43:47.32, Dur: 3579s
 TimeLngth: 3578.84s, TimeInt: 28ms (35.4pps)
 TimeCor=-13.0s, PPS(min,max,med): 35,36,35
 Timeint/DSPdiff(mn,min,mx):28,28,30/28,28,30
 Prof: 350 to 127220, NumProf(r/t): 17571/126870
 ProcTime/Recs: 16:33:42-16:41:58/105426-122996
 ADacqtime: 25ms; DRate: 198.4KB/s; Flags: 0, 0, 0
 Pulse: 275ns, IFfilt: 5.0MHz; ppPol: HH HV VV
 TxPol: HHVV, PRF: 20 10 20 10 kHz, Noiseflg:4,3
 Range: Delay 75m, Spacing 15m, Gates 100
 Ave. Pulses: 84, Rng/Prof Aspect@90m/s: 5.9

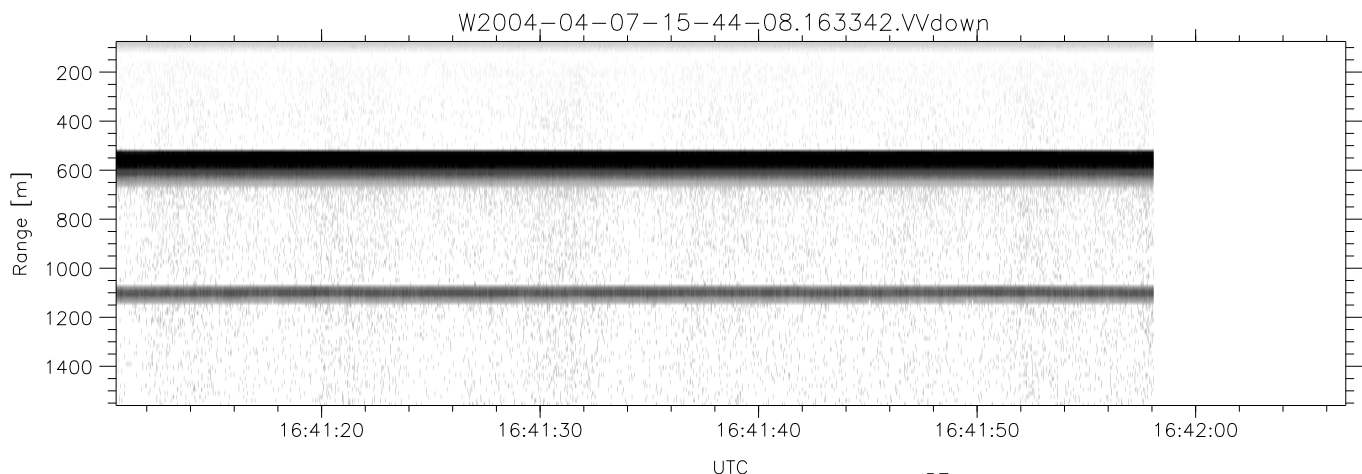
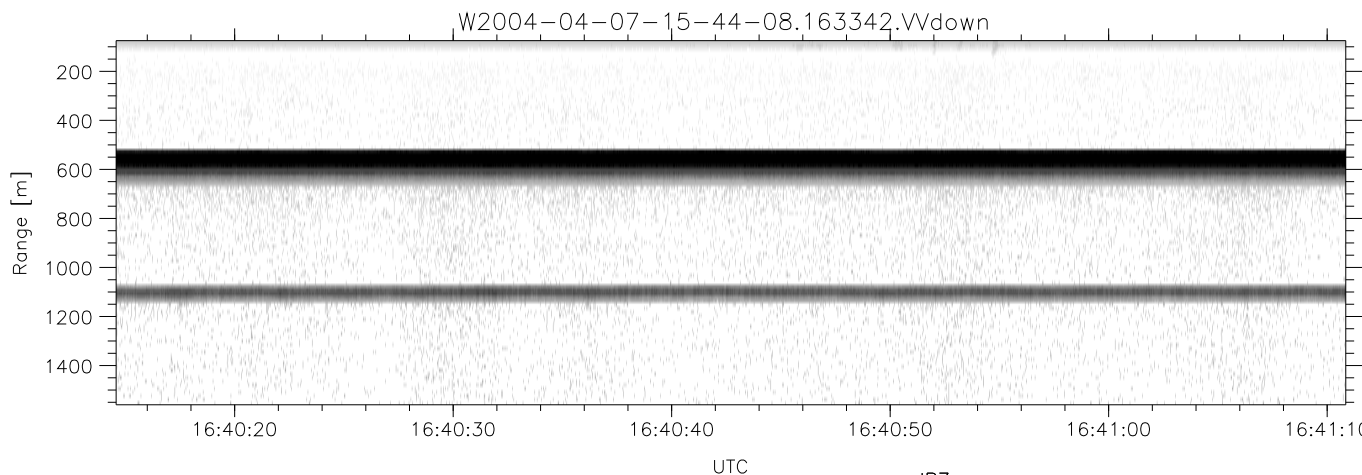
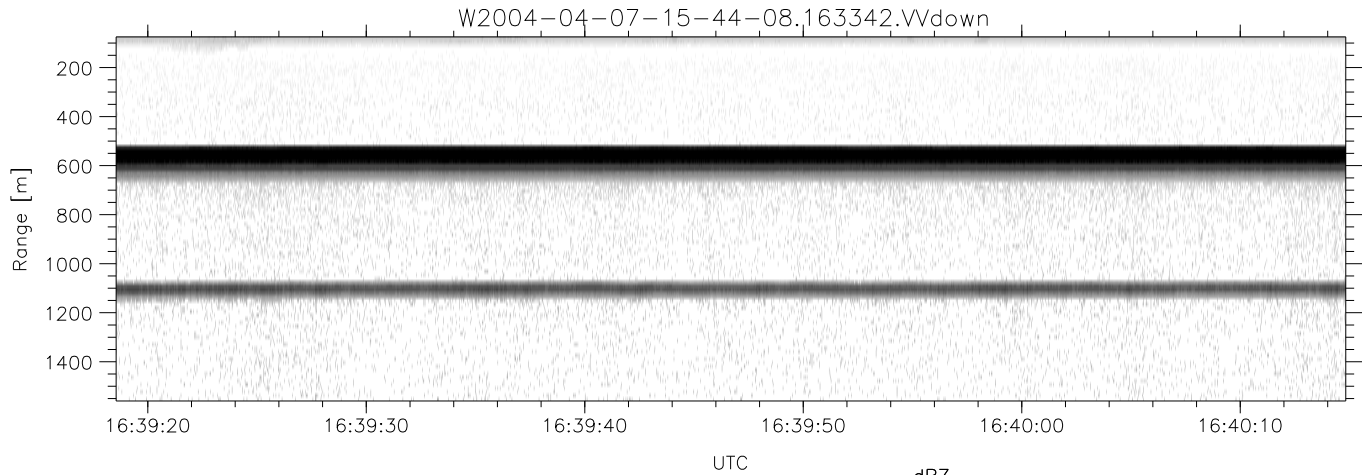
	Min	Max	Mean	Std	Varc%
hhN(dB)	-67.64	-64.29	-65.88	-75.94	9.9
vvN(dB)	-67.84	-64.22	-66.04	-76.01	10.1
hhL(dB)	-9.51	-2.56	-5.94	-12.25	23.4
vvL(dB)	-0.82	6.00	5.78	-2.03	16.6
ppN(m/s)	-12.76	12.23	-0.02	4.13	
ppT(m/s)	-100.7	96.64	-0.14	32.65	
hh/vv(dB)	NaN	63.71	21.47	41.10	9184
vh/hh(dB)	NaN	-28.49	-33.05	-35.06	62.9
hv/vv(dB)	NaN	-34.86	-55.39	-46.01	867.
hnjmp(dB)			-0.15		
vnjmp(dB)			-0.15		



CIFEX 2004 Data (cal/250ns+2.5/100ns-3.5/500ns: 53.0,50.0)

W2004-04-07-15-44-08 - PPMAG4, IRIG:1/0/2
 UTC: 15:44:08.52 to 16:43:47.32, Dur: 3579s
 TimeLngth: 3578.84s, TimeInt: 28ms (35.4pps)
 TimeCor=-13.0s, PPS(min,max,med): 35,36,35
 Timeint/DSPdiff(mn,min,mx):28,28,30/28,28,30
 Prof: 350 to 127220, NumProf(r/t): 17571/126870
 ProcTime/Recs: 16:33:42-16:41:58/105426-122996
 ADacqtime: 25ms; DRate: 198.4KB/s; Flags: 0, 0, 0
 Pulse: 275ns, IFfilt: 5.0MHz; ppPol: HH HV VV
 TxPol: HHVV, PRF: 20 10 20 10 kHz, Noiseflg:4,3
 Range: Delay 75m, Spacing 15m, Gates 100
 Ave. Pulses: 84, Rng/Prof Aspect@90m/s: 5.9

	Min	Max	Mean	Std	Varc%
hhN (dB)	-67.64	-64.29	-65.88	-75.94	9.9
vvN (dB)	-67.84	-64.22	-66.04	-76.01	10.1
hhL (dB)	-9.51	-2.56	-5.94	-12.25	23.4
vvL (dB)	-0.82	6.00	5.78	-2.03	16.6
ppN (m/s)	-12.76	12.23	-0.02	4.13	
ppT (m/s)	-100.7	96.64	-0.14	32.65	
hh/vv (dB)	NaN	63.71	21.47	41.10	9184
vh/hh (dB)	NaN	-28.49	-33.05	-35.06	62.9
hv/vv (dB)	NaN	-34.86	-55.39	-46.01	867.
hnjmp (dB)			-0.15		
vnjmp (dB)			-0.15		



CIFEX 2004 Data (cal/250ns+2.5/100ns-3.5/500ns: 53.0,50.0)

W2004-04-07-15-44-08 - PPMAG4, IRIG:1/0/2
 UTC: 15:44:08.52 to 16:43:47.32, Dur: 3579s
 TimeLngth: 3578.84s, TimeInt: 28ms (35.4pps)
 TimeCor=-13.0s, PPS(min,max,med): 35,36,35
 Timeint/DSPdiff(mn,min,mx):28,28,30/28,28,30
 Prof: 350 to 127220, NumProf(r/t): 17571/126870
 ProcTime/Recs: 16:33:42-16:41:58/105426-122996
 ADacqtime: 25ms; DRate: 198.4KB/s; Flags: 0, 0, 0
 Pulse: 275ns, IFfilt: 5.0MHz; ppPol: HH HV VV
 TxPol: HHVV, PRF: 20 10 20 10 kHz, NoiseFlg:4,3
 Range: Delay 75m, Spacing 15m, Gates 100
 Ave. Pulses: 84, Rng/Prof Aspect@90m/s: 5.9

	Min	Max	Mean	Std	Varc%
hhN (dB)	-67.64	-64.29	-65.88	-75.94	9.9
vvN (dB)	-67.84	-64.22	-66.04	-76.01	10.1
hhL (dB)	-9.51	-2.56	-5.94	-12.25	23.4
vvL (dB)	-0.82	6.00	5.78	-2.03	16.6
ppN (m/s)	-12.76	12.23	-0.02	4.13	
ppT (m/s)	-100.7	96.64	-0.14	32.65	
hh/vv (dB)	NaN	63.71	21.47	41.10	9184
vh/hh (dB)	NaN	-28.49	-33.05	-35.06	62.9
hv/vv (dB)	NaN	-34.86	-55.39	-46.01	867.
hnjmp (dB)			-0.15		
vnjmp (dB)			-0.15		