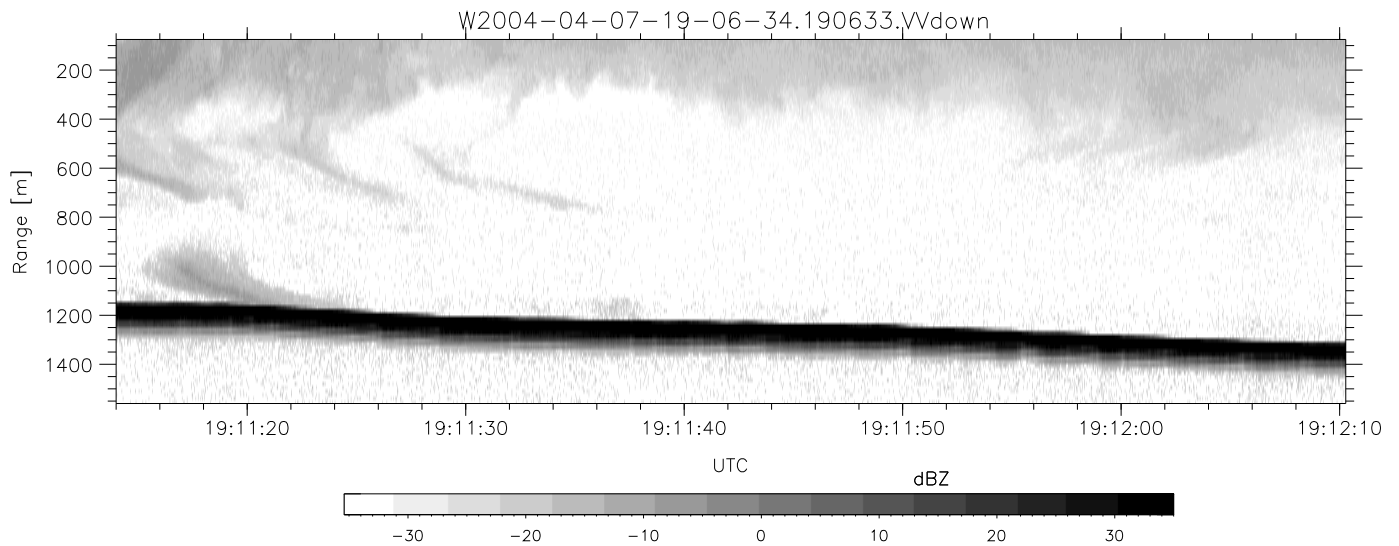
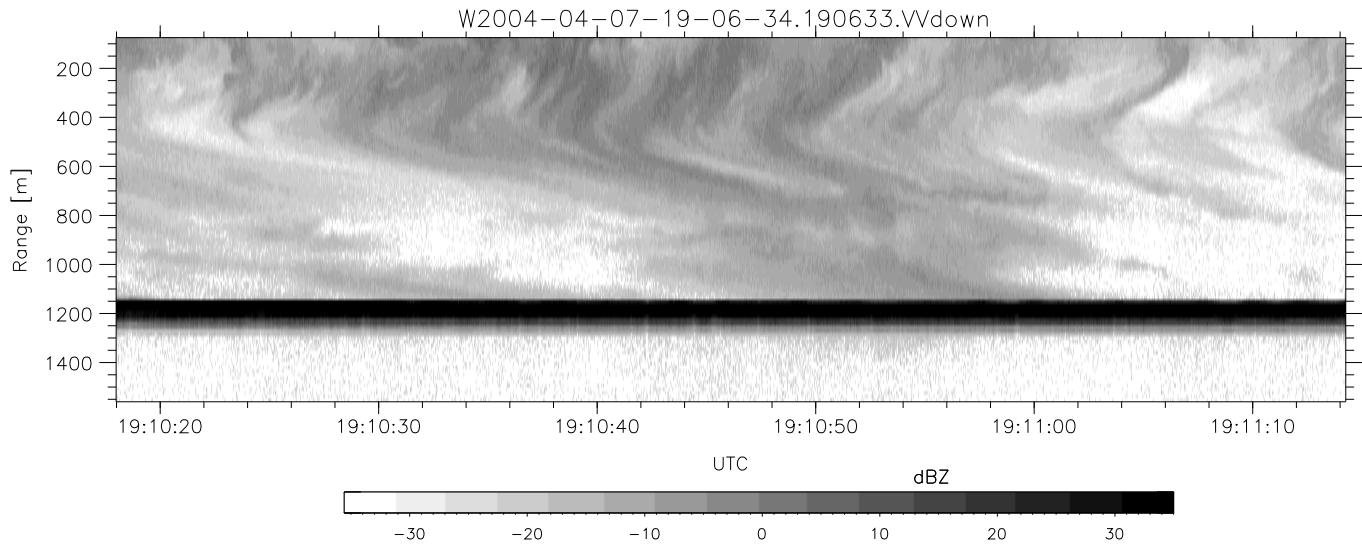
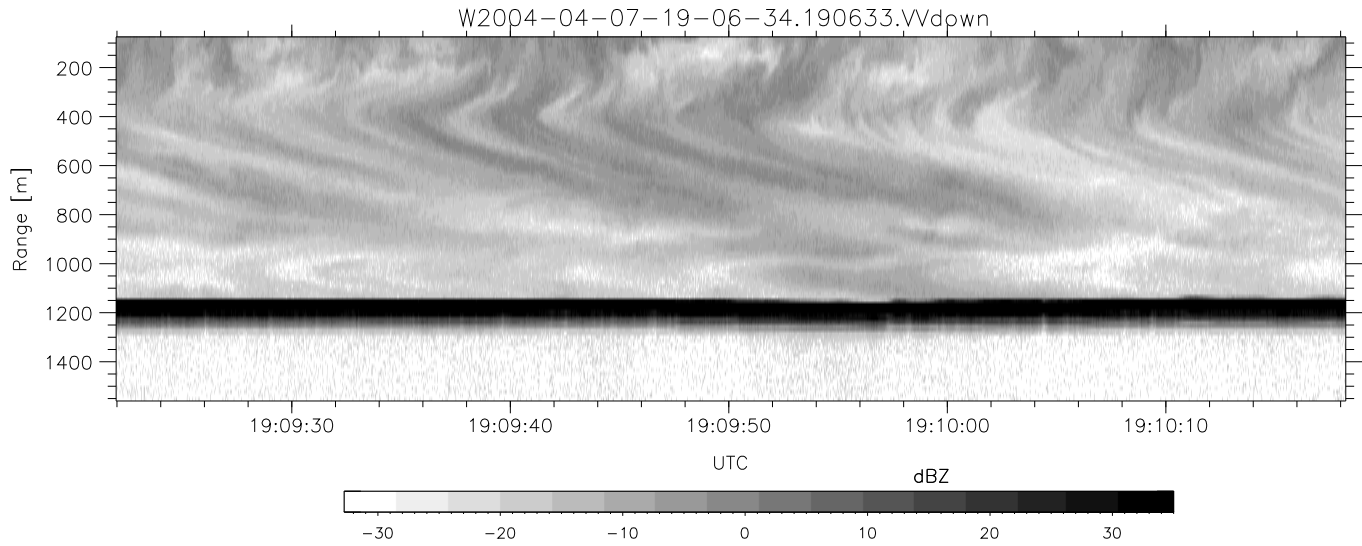


CIFEX 2004 Data (cal/250ns+2.5/100ns-3.5/500ns: 53.0,50.0)

W2004-04-07-19-06-34 - PPMAG4, IRIG:1/0/2  
 UTC: 19:06:33.93 to 19:43:20.32, Dur: 2207s  
 TimeLngth: 2206.37s, TimeInt: 28ms (35.5pps)  
 TimeCor=-13.0s, PPS(min,max,med): 35,36,35  
 Timeint/DSPdiff(mn,min,mx):28,28,28/28,28,28  
 Prof: 340 to 78559, NumProf(r/t): 17571/78219  
 ProcTime/Recs: 19:06:33-19:14:49/0-17570  
 ADacqtime: 25ms; DRate: 198.4KB/s; Flags: 0, 0, 0  
 Pulse: 275ns, IFilt: 5.0MHz; ppPol: HH HV VV  
 TxPol: HHVV, PRF: 20 10 20 10 kHz, Noiseflg:4,4  
 Range: Delay 75m, Spacing 15m, Gates 100  
 Ave. Pulses: 84, Rng/Prof Aspect@90m/s: 5.9

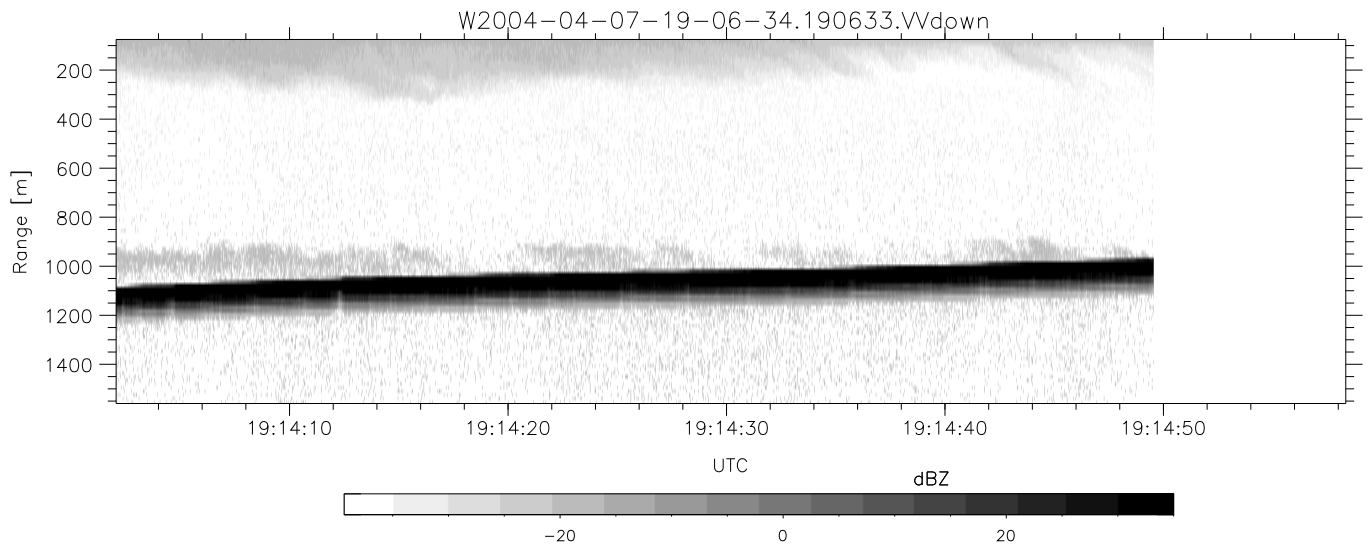
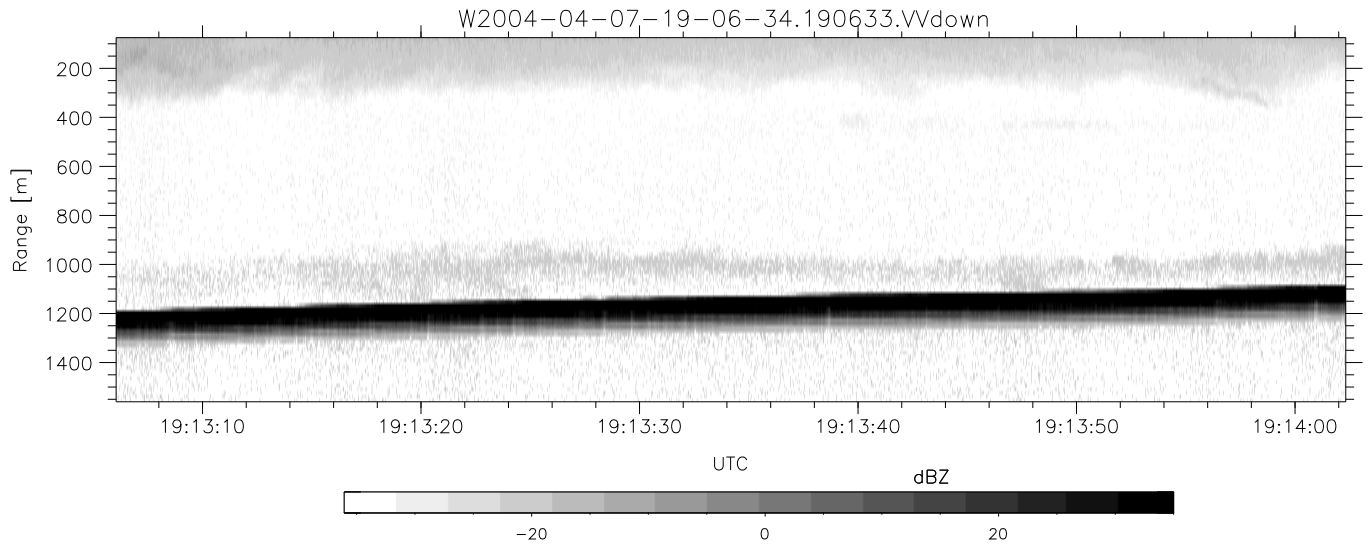
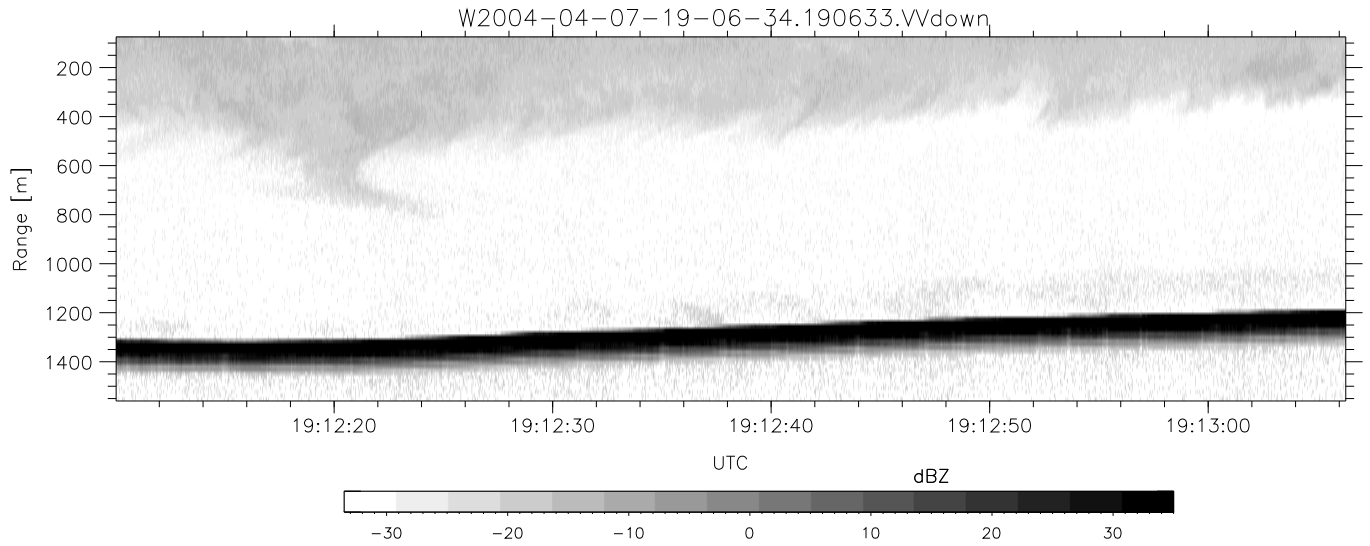
	Min	Max	Mean	Std	Varc%
hhN (dB)	-66.91	-63.46	-65.13	-75.24	9.7
vvN (dB)	-67.06	-63.78	-65.28	-75.33	9.9
hhL (dB)	-6.85	1.62	-1.96	-6.62	34.2
vvL (dB)	1.13	6.00	5.96	-7.81	4.2
ppN (m/s)	-12.38	12.64	-0.07	4.14	
ppT (m/s)	-97.78	99.85	-0.57	32.69	
hh/vv (dB)	NaN	55.30	10.82	31.80	1252
vh/hh (dB)	NaN	-26.52	-33.78	-34.99	75.7
hv/vv (dB)	NaN	-32.86	-51.91	-44.16	596.
hnjmp (dB)			-0.14		
vnjmp (dB)			-0.14		



CIFEX 2004 Data (cal/250ns+2.5/100ns-3.5/500ns: 53.0,50.0)

W2004-04-07-19-06-34 - PPMAG4, IRIG:1/0/2  
 UTC: 19:06:33.93 to 19:43:20.32, Dur: 2207s  
 TimeLngth: 2206.37s, TimeInt: 28ms (35.5pps)  
 TimeCor=-13.0s, PPS(min,max,med): 35,36,35  
 Timeint/DSPdiff(mn,min,mx):28,28,28/28,28,28  
 Prof: 340 to 78559, NumProf(r/t): 17571/78219  
 ProcTime/Recs: 19:06:33-19:14:49/0-17570  
 ADacqtime: 25ms; DRate: 198.4KB/s; Flags: 0, 0, 0  
 Pulse: 275ns, IFilt: 5.0MHz; ppPol: HH HV VV  
 TxPol: HHVV, PRF: 20 10 20 10 kHz, NoiseFlg:4,4  
 Range: Delay 75m, Spacing 15m, Gates 100  
 Ave. Pulses: 84, Rng/Prof Aspect@90m/s: 5.9

	Min	Max	Mean	Std	Varc%
hhN (dB)	-66.91	-63.46	-65.13	-75.24	9.7
vvN (dB)	-67.06	-63.78	-65.28	-75.33	9.9
hhL (dB)	-6.85	1.62	-1.96	-6.62	34.2
vvL (dB)	1.13	6.00	5.96	-7.81	4.2
ppN (m/s)	-12.38	12.64	-0.07	4.14	
ppT (m/s)	-97.78	99.85	-0.57	32.69	
hh/vv (dB)	NaN	55.30	10.82	31.80	1252
vh/hh (dB)	NaN	-26.52	-33.78	-34.99	75.7
hv/vv (dB)	NaN	-32.86	-51.91	-44.16	596.
hnjmp (dB)			-0.14		
vnjmp (dB)			-0.14		



CIFEX 2004 Data (cal/250ns+2.5/100ns-3.5/500ns: 53.0,50.0)

W2004-04-07-19-06-34 - PPMAG4, IRIG:1/0/2  
 UTC: 19:06:33.93 to 19:43:20.32, Dur: 2207s  
 TimeLngth: 2206.37s, TimeInt: 28ms (35.5pps)  
 TimeCor=-13.0s, PPS(min,max,med): 35,36,35  
 Timeint/DSPdiff(mn,min,mx):28,28,28/28,28,28  
 Prof: 340 to 78559, NumProf(r/t): 17571/78219  
 ProcTime/Recs: 19:06:33-19:14:49/0-17570  
 ADacqtime: 25ms; DRate: 198.4KB/s; Flags: 0, 0, 0  
 Pulse: 275ns, IFilt: 5.0MHz; ppPol: HH HV VV  
 TxPol: HHVV, PRF: 20 10 20 10 kHz, NoiseFlg:4,4  
 Range: Delay 75m, Spacing 15m, Gates 100  
 Ave. Pulses: 84, Rng/Prof Aspect@90m/s: 5.9

	Min	Max	Mean	Std	Varc%
hhN (dB)	-66.91	-63.46	-65.13	-75.24	9.7
vvN (dB)	-67.06	-63.78	-65.28	-75.33	9.9
hhL (dB)	-6.85	1.62	-1.96	-6.62	34.2
vvL (dB)	1.13	6.00	5.96	-7.81	4.2
ppN (m/s)	-12.38	12.64	-0.07	4.14	
ppT (m/s)	-97.78	99.85	-0.57	32.69	
hh/vv (dB)	NaN	55.30	10.82	31.80	1252
vh/hh (dB)	NaN	-26.52	-33.78	-34.99	75.7
hv/vv (dB)	NaN	-32.86	-51.91	-44.16	596.
hnjmp (dB)			-0.14		
vnjmp (dB)			-0.14		