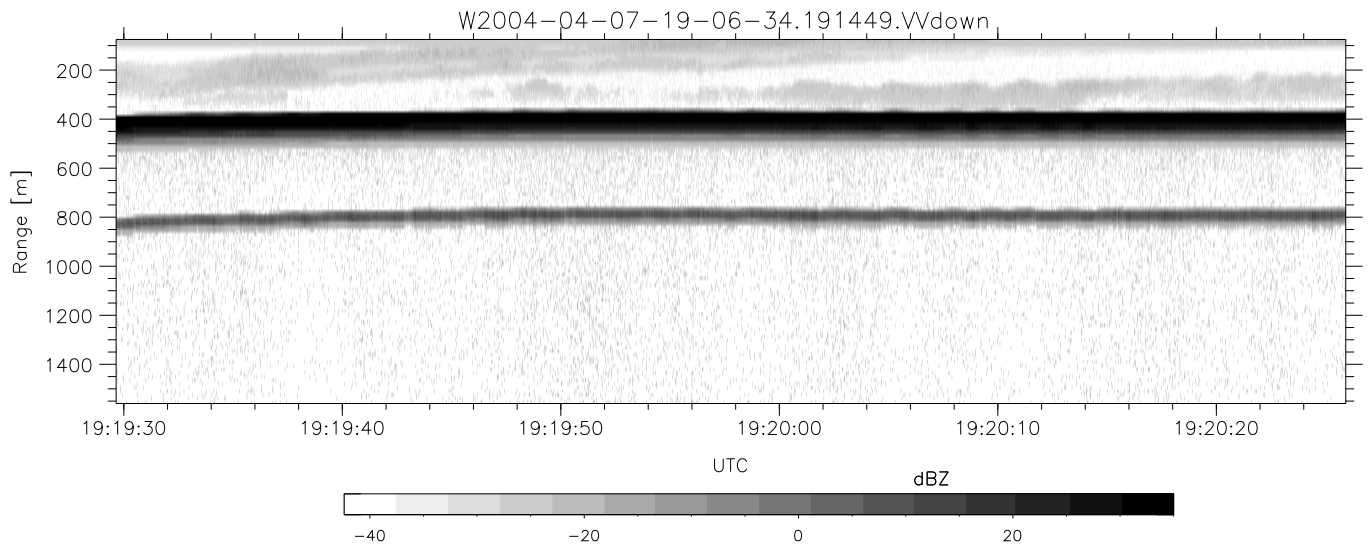
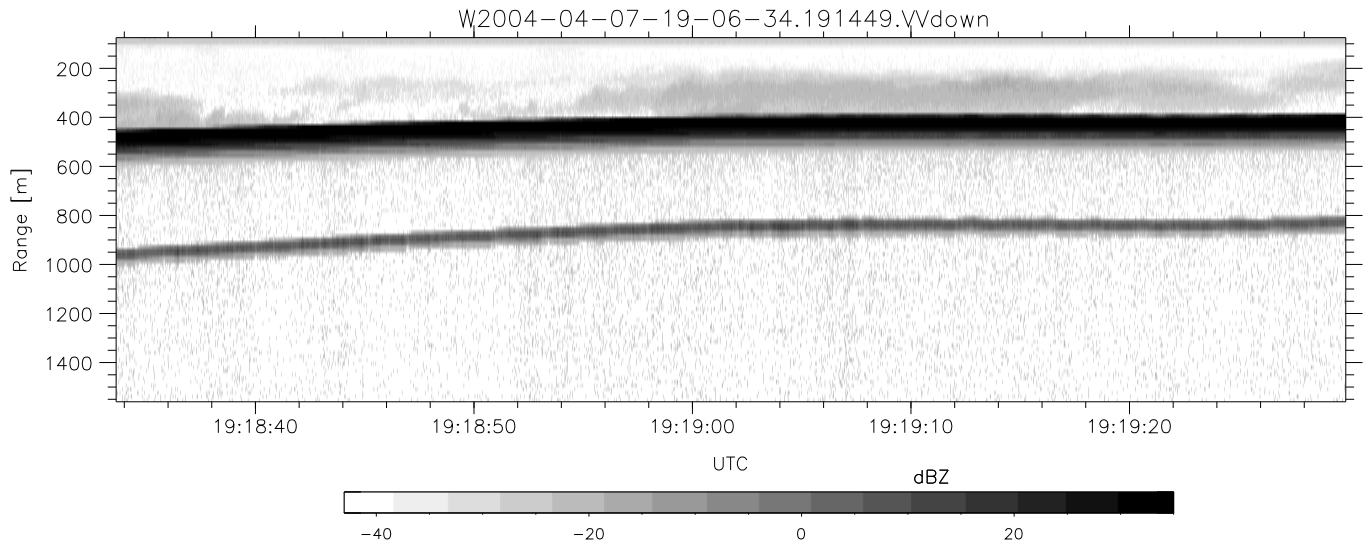
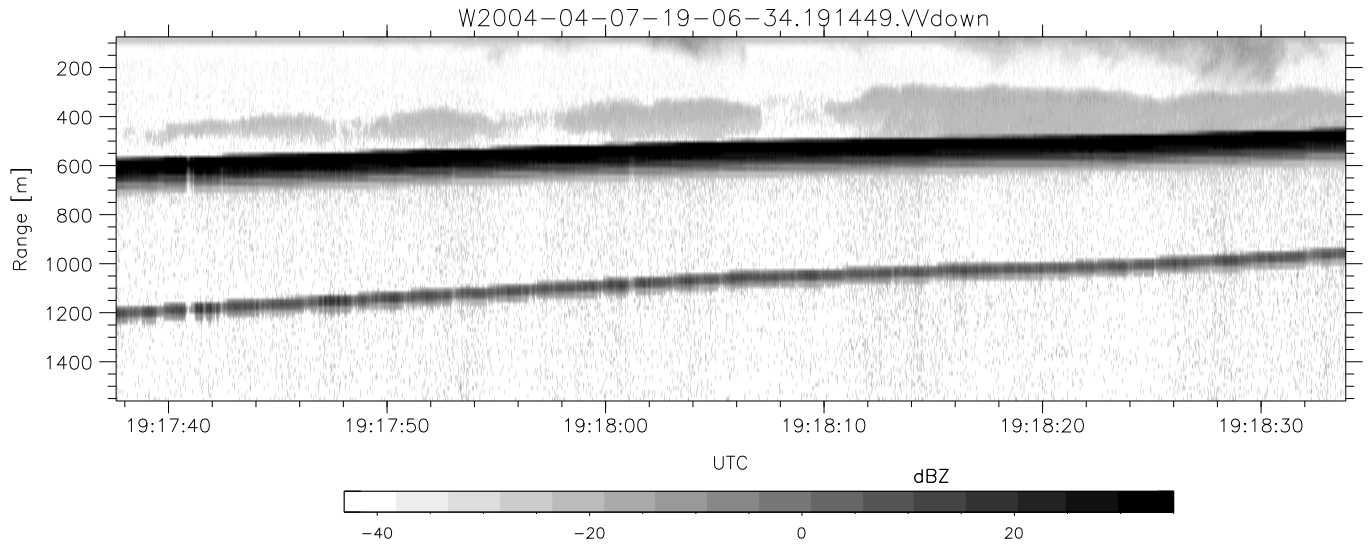


CIFEX 2004 Data (cal/250ns+2.5/100ns-3.5/500ns: 53.0,50.0)

W2004-04-07-19-06-34 - PPMAG4, IRIG:1/0/2
 UTC: 19:06:33.93 to 19:43:20.32, Dur: 2207s
 TimeLngth: 2206.37s, TimeInt: 28ms (35.5pps)
 TimeCor=-13.0s, PPS(min,max,med): 35,36,35
 Timeint/DSPdiff(mn,min,mx):28,28,28/28,28,28
 Prof: 340 to 78559, NumProf(r/t): 17571/78219
 ProcTime/Recs: 19:14:49-19:23:05/17571-35141
 ADacqtime: 25ms; DRate: 198.4KB/s; Flags: 0, 0, 0
 Pulse: 275ns, IFilt: 5.0MHz; ppPol: HH HV VV
 TxPol: HHVV, PRF: 20 10 20 10 kHz, NoiseFlg:2,2
 Range: Delay 75m, Spacing 15m, Gates 100
 Ave. Pulses: 84, Rng/Prof Aspect@90m/s: 5.9

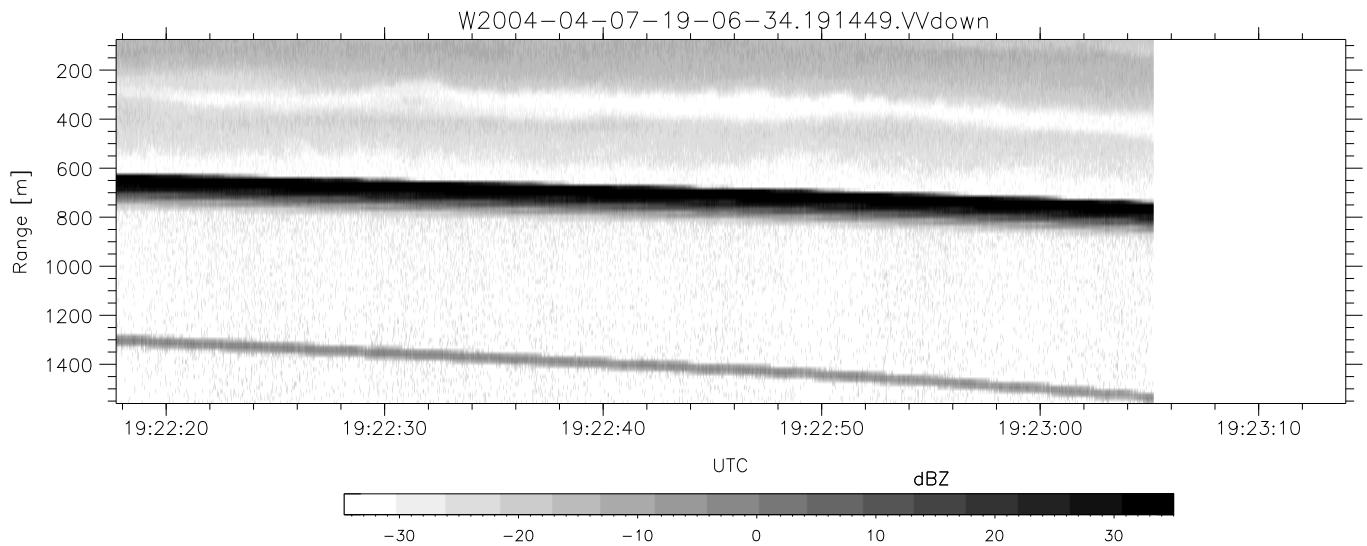
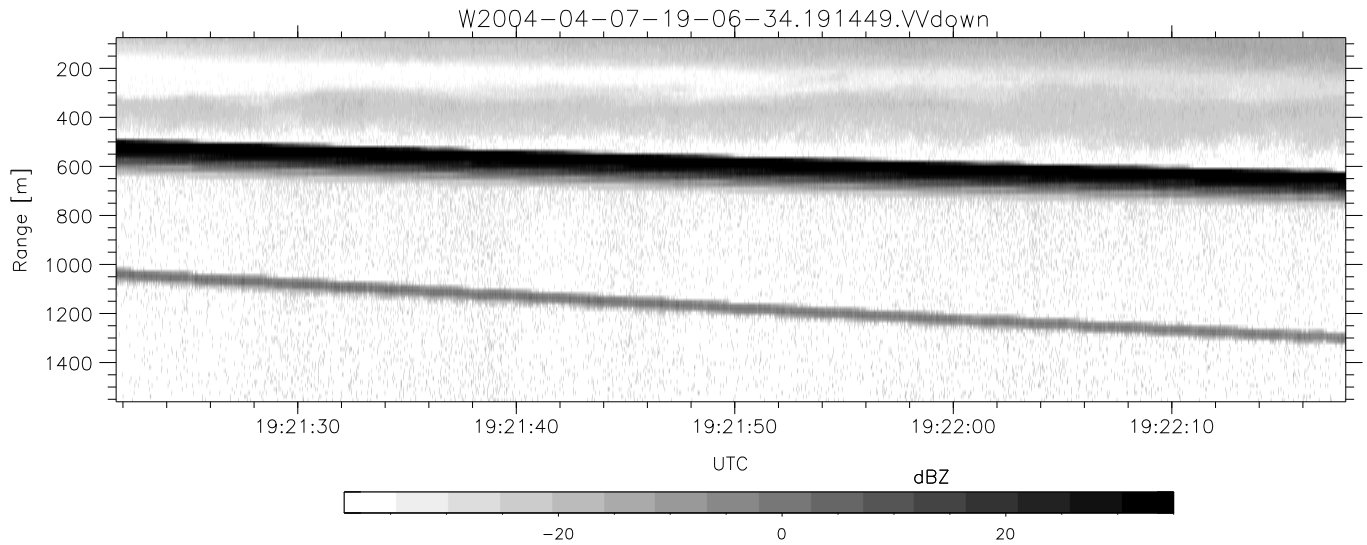
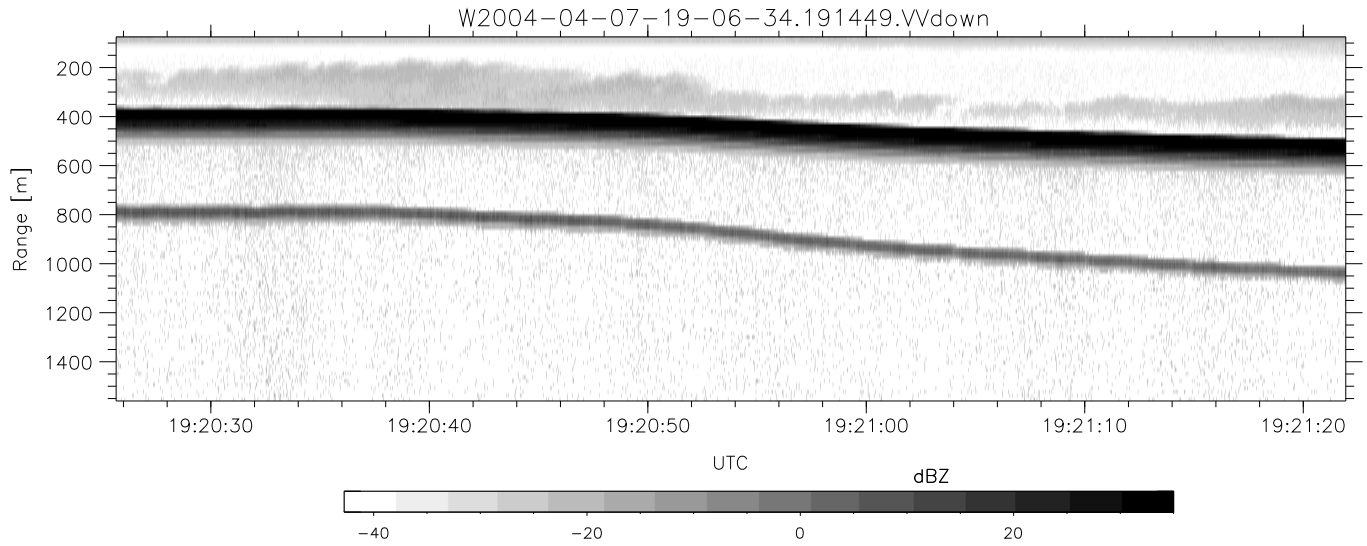
	Min	Max	Mean	Std	Varc%
hhN (dB)	-66.88	-63.71	-65.19	-75.27	9.8
vvN (dB)	-67.17	-63.77	-65.30	-75.39	9.8
hhL (dB)	-6.62	0.18	-1.68	-6.29	34.7
vvL (dB)	5.63	6.00	6.00	-26.09	0.1
ppN (m/s)	-12.23	12.51	0.00	4.15	
ppT (m/s)	-96.60	98.83	0.01	32.81	
hh/vv (dB)	NaN	55.14	16.71	36.51	9568
vh/hh (dB)	NaN	-27.06	-33.71	-35.54	65.5
hv/vv (dB)	NaN	-34.73	-56.11	-46.25	968.
hnjmp (dB)			0.14		
vnjmp (dB)			0.13		



CIFEX 2004 Data (cal/250ns+2.5/100ns-3.5/500ns: 53.0,50.0)

W2004-04-07-19-06-34 - PPMAG4, IRIG:1/0/2
 UTC: 19:06:33.93 to 19:43:20.32, Dur: 2207s
 TimeLngth: 2206.37s, TimeInt: 28ms (35.5pps)
 TimeCor=-13.0s, PPS(min,max,med): 35,36,35
 Timeint/DSPdiff(mn,min,mx):28,28,28/28,28,28
 Prof: 340 to 78559, NumProf(r/t): 17571/78219
 ProcTime/Recs: 19:14:49-19:23:05/17571-35141
 ADacqtime: 25ms; DRate: 198.4KB/s; Flags: 0, 0, 0
 Pulse: 275ns, IFilt: 5.0MHz; ppPol: HH HV VV
 TxPol: HHVV, PRF: 20 10 20 10 kHz, NoiseFlg:2,2
 Range: Delay 75m, Spacing 15m, Gates 100
 Ave. Pulses: 84, Rng/Prof Aspect@90m/s: 5.9

	Min	Max	Mean	Std	Varc%
hhN (dB)	-66.88	-63.71	-65.19	-75.27	9.8
vvN (dB)	-67.17	-63.77	-65.30	-75.39	9.8
hhL (dB)	-6.62	0.18	-1.68	-6.29	34.7
vvL (dB)	5.63	6.00	6.00	-26.09	0.1
ppN (m/s)	-12.23	12.51	0.00	4.15	
ppT (m/s)	-96.60	98.83	0.01	32.81	
hh/vv (dB)	NaN	55.14	16.71	36.51	9568
vh/hh (dB)	NaN	-27.06	-33.71	-35.54	65.5
hv/vv (dB)	NaN	-34.73	-56.11	-46.25	968.
hn_jmp (dB)				0.14	
vn_jmp (dB)				0.13	



CIFEX 2004 Data (cal/250ns+2.5/100ns-3.5/500ns: 53.0,50.0)

W2004-04-07-19-06-34 - PPMAG4, IRIG:1/0/2
 UTC: 19:06:33.93 to 19:43:20.32, Dur: 2207s
 TimeLngth: 2206.37s, TimeInt: 28ms (35.5pps)
 TimeCor=-13.0s, PPS(min,max,med): 35,36,35
 Timeint/DSPdiff(mn,min,mx):28,28,28/28,28,28
 Prof: 340 to 78559, NumProf(r/t): 17571/78219
 ProcTime/Recs: 19:14:49-19:23:05/17571-35141
 ADacqtime: 25ms; DRate: 198.4KB/s; Flags: 0, 0, 0
 Pulse: 275ns, IFfilt: 5.0MHz; ppPol: HH HV VV
 TxPol: HHVV, PRF: 20 10 20 10 kHz, Noiseflg:2,2
 Range: Delay 75m, Spacing 15m, Gates 100
 Ave. Pulses: 84, Rng/Prof Aspect@90m/s: 5.9

	Min	Max	Mean	Std	Varc%
hhN(dB)	-66.88	-63.71	-65.19	-75.27	9.8
vvN(dB)	-67.17	-63.77	-65.30	-75.39	9.8
hhL(dB)	-6.62	0.18	-1.68	-6.29	34.7
vvL(dB)	5.63	6.00	6.00	-26.09	0.1
ppN(m/s)	-12.23	12.51	0.00	4.15	
ppT(m/s)	-96.60	98.83	0.01	32.81	
hh/vv(dB)	NaN	55.14	16.71	36.51	9568
vh/hh(dB)	NaN	-27.06	-33.71	-35.54	65.5
hv/vv(dB)	NaN	-34.73	-56.11	-46.25	968.
hn_jmp(dB)				0.14	
vn_jmp(dB)				0.13	