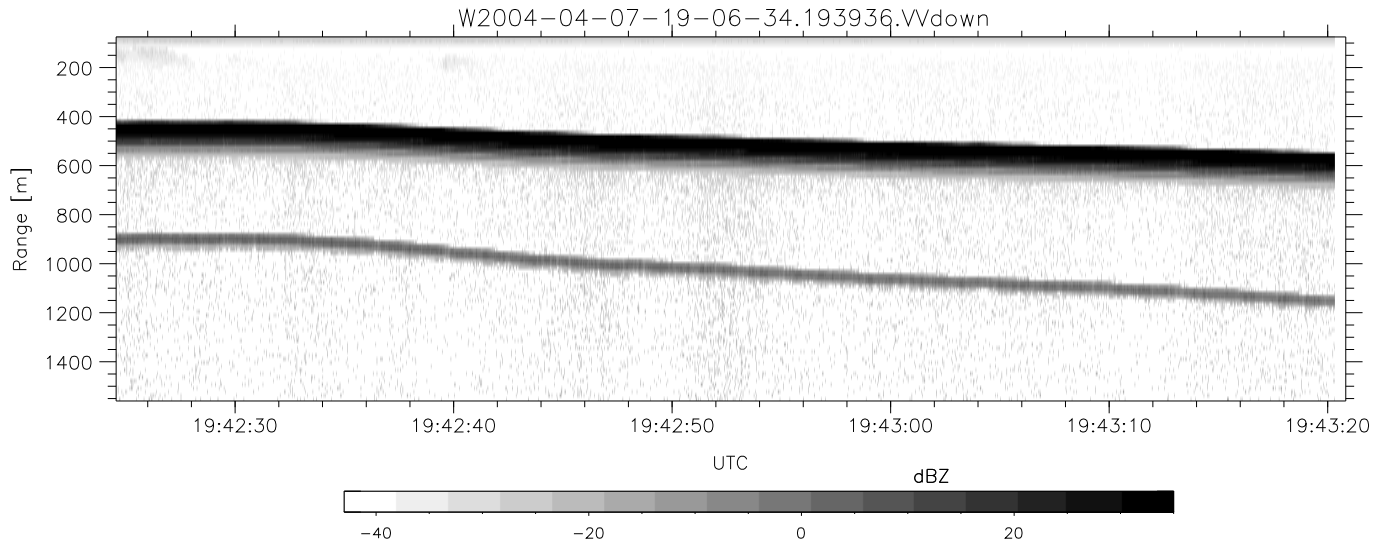


CIFEX 2004 Data (cal/250ns+2.5/100ns-3.5/500ns: 53.0,50.0)

W2004-04-07-19-06-34 - PPMAG4, IRIG:1/0/2
 UTC: 19:06:33.93 to 19:43:20.32, Dur: 2207s
 TimeLngth: 2206.45s, TimeInt: 28ms (35.4pps)
 TimeCor=-13.0s, PPS(min,max,med): 35,36,35
 Timeint/DSPdiff(mn,min,mx):28,28,29/28,28,29
 Prof: 340 to 78559, NumProf(r/t): 7935/78219
 ProcTime/Recs: 19:39:36-19:43:20/70284-78218
 ADacqtime: 25ms; DRate: 198.4KB/s; Flags: 0, 0, 0
 Pulse: 275ns, IFilt: 5.0MHz; ppPol: HH HV VV
 TxPol: HHVV, PRF: 20 10 20 10 kHz, Noiseflg:2,2
 Range: Delay 75m, Spacing 15m, Gates 100
 Ave. Pulses: 84, Rng/Prof Aspect@90m/s: 5.9

	Min	Max	Mean	Std	Varc%
hhN(dB)	-67.03	-63.88	-65.32	-75.41	9.8
vvN(dB)	-67.19	-63.70	-65.35	-75.42	9.9
hhL(dB)	-5.38	-0.79	-1.83	-9.71	16.3
vvL(dB)	6.00	6.00	6.00	-Inf	0.0
ppN(m/s)	-12.81	11.97	-0.11	4.13	
ppT(m/s)	-101.2	94.57	-0.85	32.66	
hh/vv(dB)	-99	-99	-99	-99	-99
vh/hh(dB)	-99	-99	-99	-99	-99
hv/vv(dB)	NaN	-35.10	-54.74	-46.64	645.
hnjmp(dB)			-0.14		
vnjmp(dB)			-0.14		



CIFEX 2004 Data (cal/250ns+2.5/100ns-3.5/500ns: 53.0,50.0)

W2004-04-07-19-06-34 - PPMAG4, IRIG:1/0/2
 UTC: 19:06:33.93 to 19:43:20.32, Dur: 2207s
 TimeLngth: 2206.45s, TimeInt: 28ms (35.4pps)
 TimeCor=-13.0s, PPS(min,max,med): 35,36,35
 Timeint/DSPdiff(mn,min,mx):28,28,29/28,28,29
 Prof: 340 to 78559, NumProf(r/t): 7935/78219
 ProcTime/Recs: 19:39:36-19:43:20/70284-78218
 ADacqtime: 25ms; DRate: 198.4KB/s; Flags: 0, 0, 0
 Pulse: 275ns, IFilt: 5.0MHz; ppPol: HH HV VV
 TxPol: HHVV, PRF: 20 10 20 10 kHz, NoiseFlg:2,2
 Range: Delay 75m, Spacing 15m, Gates 100
 Ave. Pulses: 84, Rng/Prof Aspect@90m/s: 5.9

	Min	Max	Mean	Std	Varc%
hhN(dB)	-67.03	-63.88	-65.32	-75.41	9.8
vvN(dB)	-67.19	-63.70	-65.35	-75.42	9.9
hhL(dB)	-5.38	-0.79	-1.83	-9.71	16.3
vvL(dB)	6.00	6.00	6.00	-Inf	0.0
ppN(m/s)	-12.81	11.97	-0.11	4.13	
ppT(m/s)	-101.2	94.57	-0.85	32.66	
hh/vv(dB)	-99	-99	-99	-99	-99
vh/hh(dB)	-99	-99	-99	-99	-99
hv/vv(dB)	NaN	-35.10	-54.74	-46.64	645.
hnjmp(dB)			-0.14		
vnjmp(dB)			-0.14		