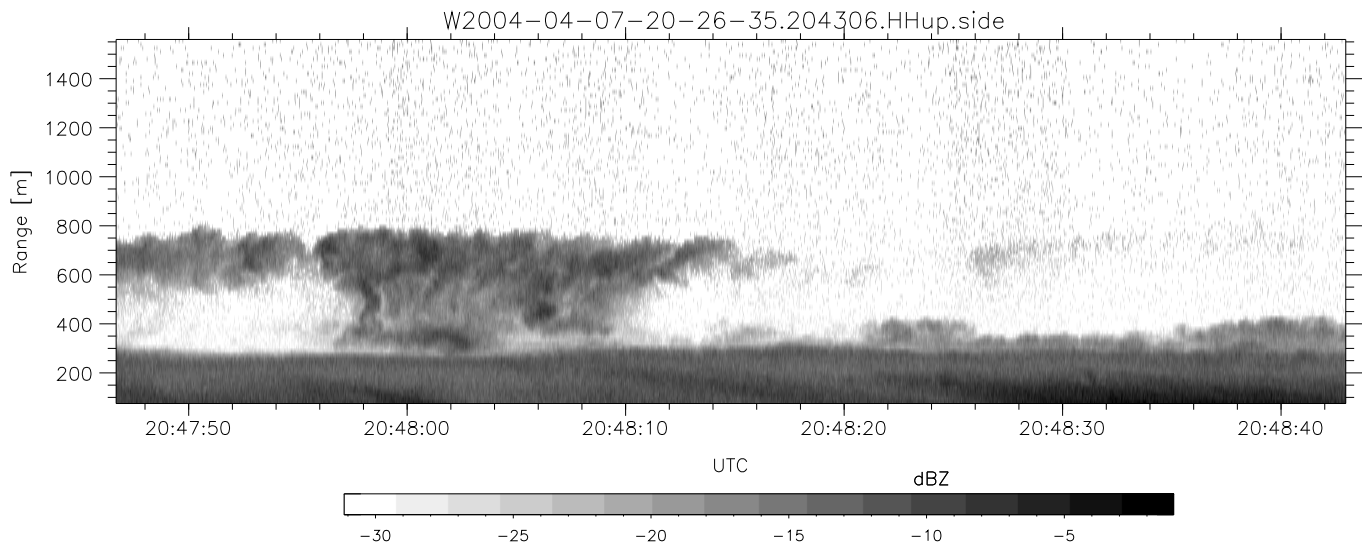
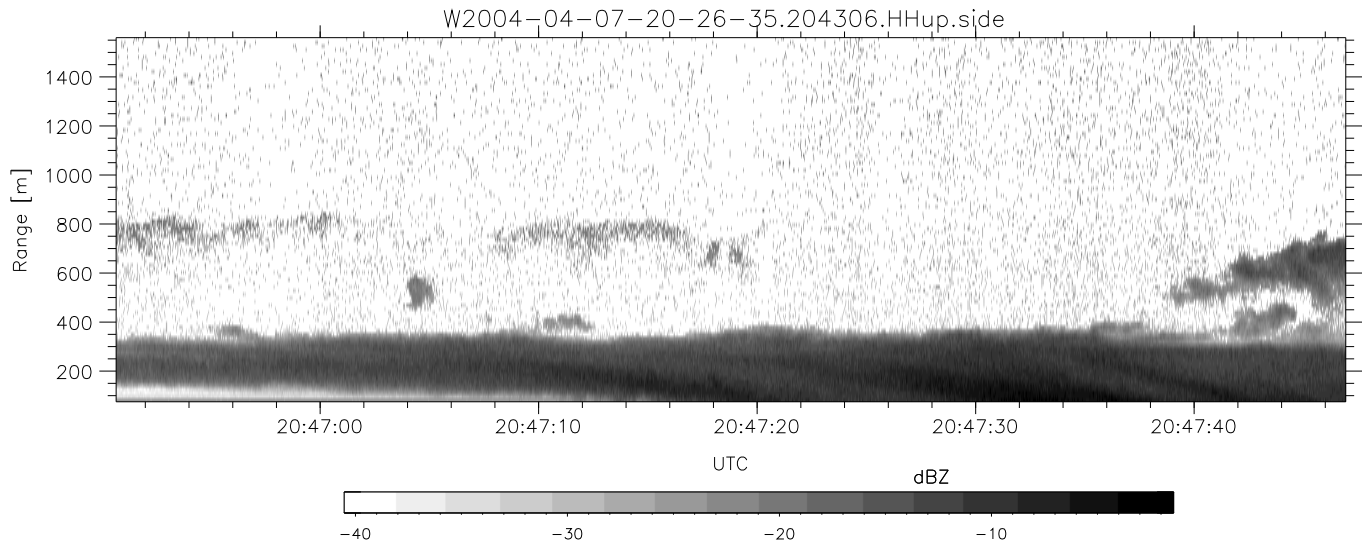
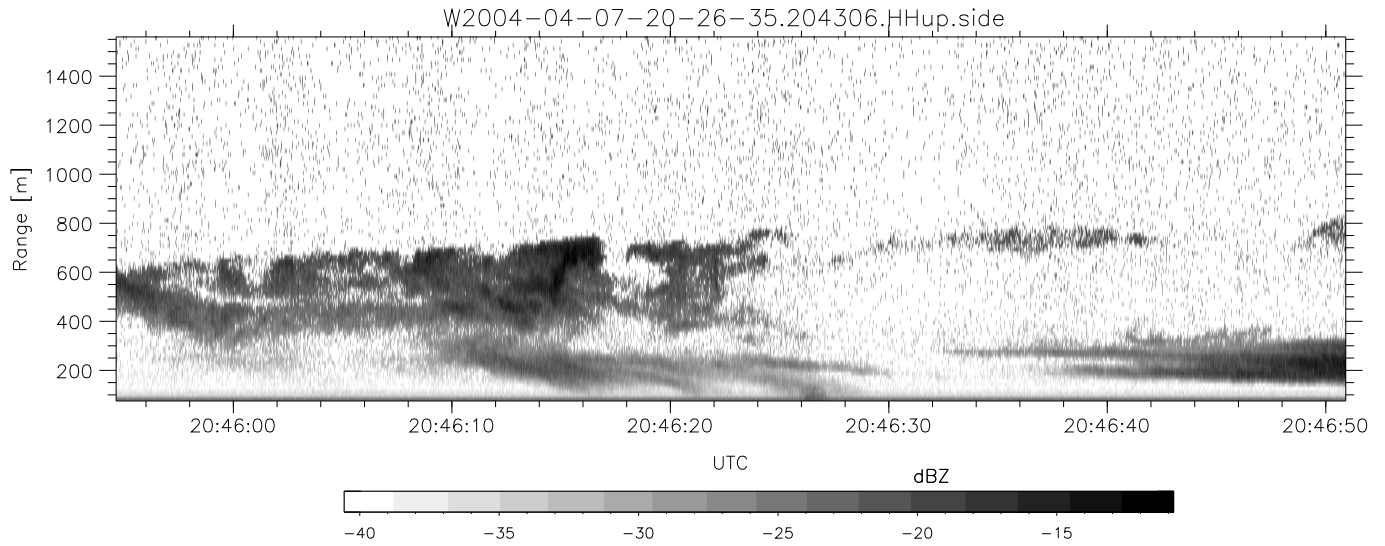


CIFEX 2004 Data (cal/250ns+2.5/100ns-3.5/500ns: 53.0,50.0)

W2004-04-07-20-26-35 - PPMAG4, IRIG:1/0/2
 UTC: 20:26:35.32 to 21:09:20.69, Dur: 2565s
 TimeLngth: 2565.35s, TimeInt: 28ms (35.5pps)
 TimeCor=-13.0s, PPS(min,max,med): 35,36,35
 Timeint/DSPdiff(mn,min,mx):28,28,36/28,28,36
 Prof: 441 to 91386, NumProf(r/t): 17571/90945
 ProcTime/Recs: 20:43:06-20:51:22/35142-52712
 ADacqtime: 25ms; DRate: 198.4KB/s; Flags: 0, 0, 0
 Pulse: 275ns, IFfilt: 5.0MHz; ppPol: HH HV VV
 TxPol: HHV, PRF: 20 10 20 10 kHz, Noiseflg:2,2
 Range: Delay 75m, Spacing 15m, Gates 100
 Ave. Pulses: 84, Rng/Prof Aspect@90m/s: 5.9

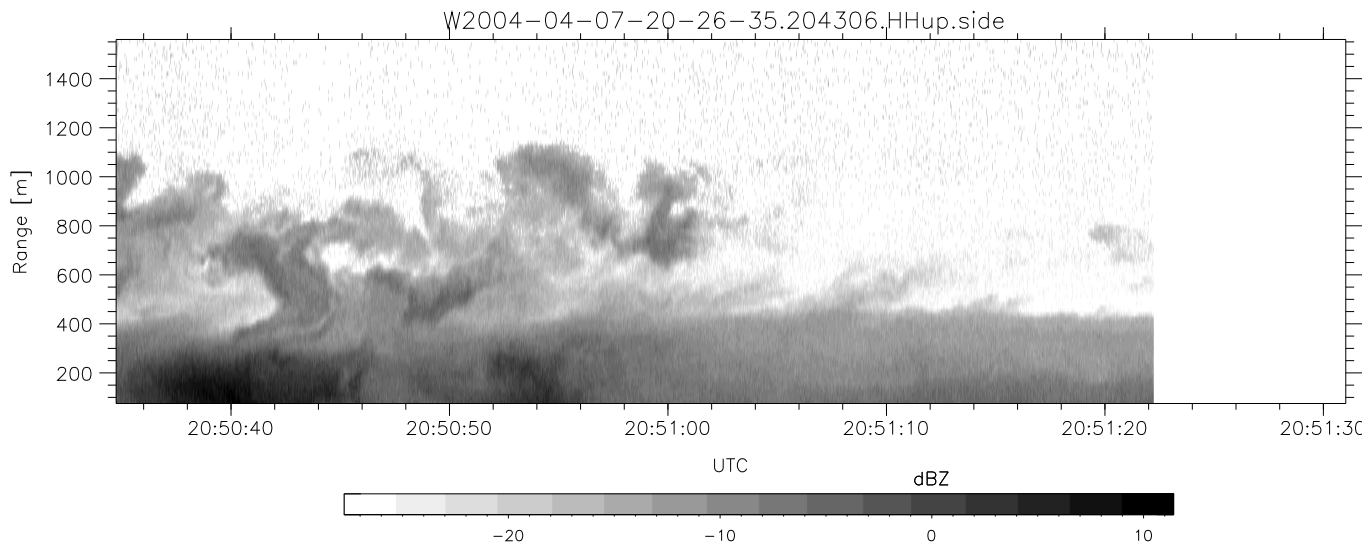
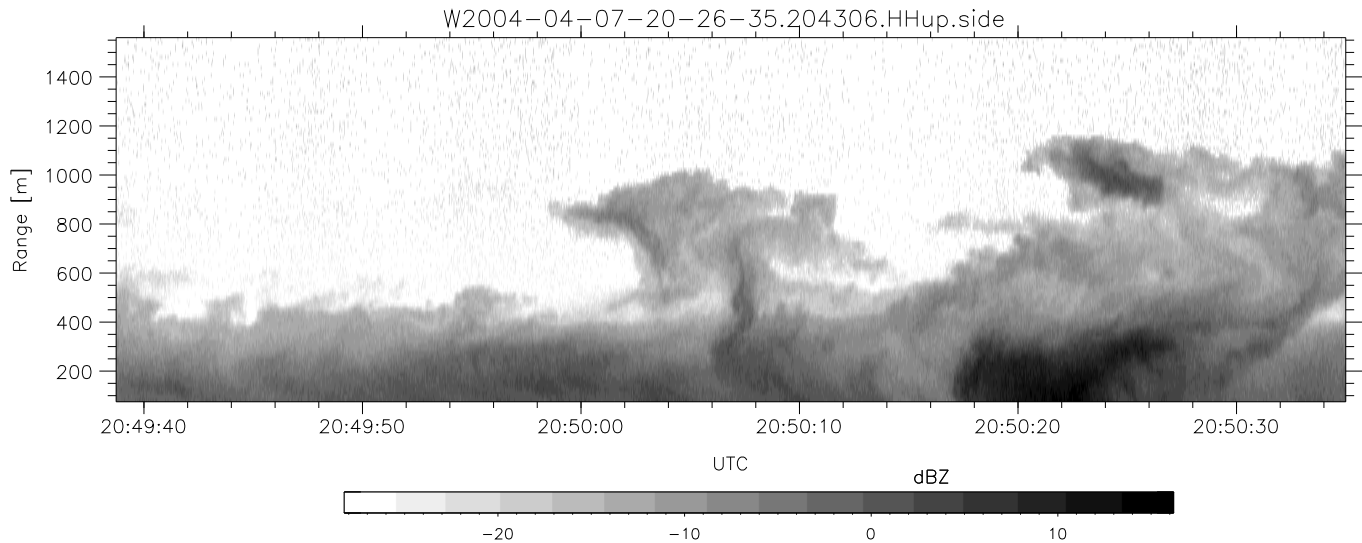
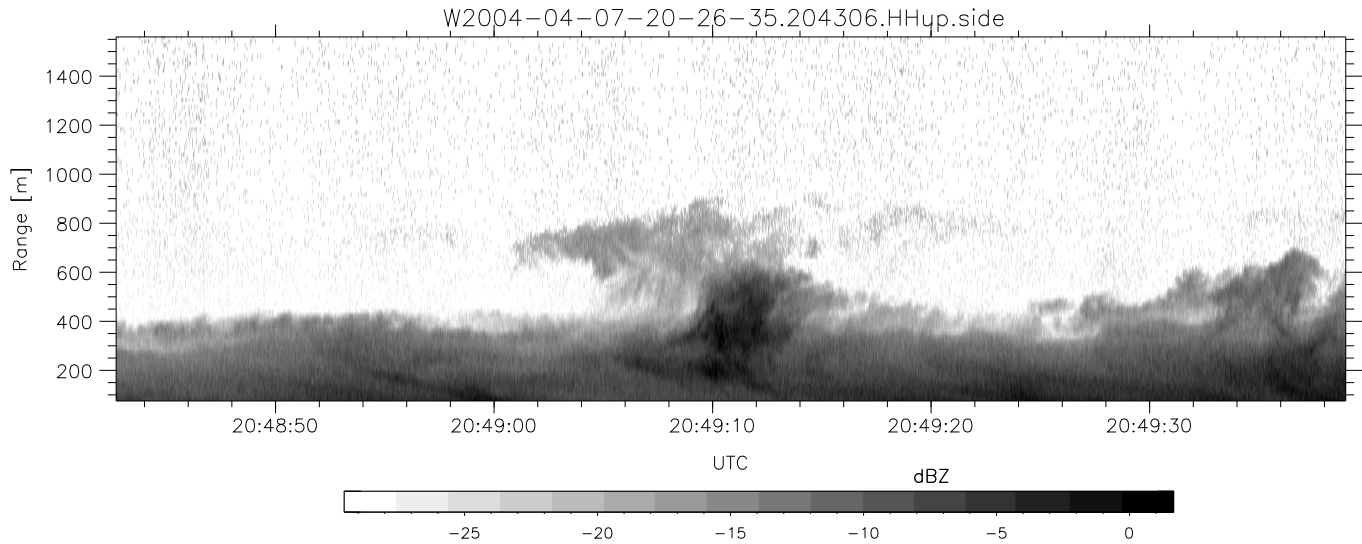
	Min	Max	Mean	Std	Varc%
hhN (dB)	-67.06	-63.56	-65.13	-75.20	9.8
vvN (dB)	-66.82	-63.51	-65.13	-75.23	9.8
hhL (dB)	-4.09	-0.36	-1.06	-12.15	7.8
vvL (dB)	6.00	6.00	6.00	-Inf	0.0
ppN (m/s)	-12.77	12.43	-0.01	4.14	
ppT (m/s)	-100.8	98.20	-0.11	32.67	
hh/vv (dB)	NaN	60.42	11.35	34.31	1974
vh/hh (dB)	NaN	-27.16	-35.39	-35.46	98.4
hv/vv (dB)	NaN	-32.01	-48.44	-43.81	290.
hnjmp (dB)			0.15		
vnjmp (dB)			0.13		



CIFEX 2004 Data (cal/250ns+2.5/100ns-3.5/500ns: 53.0,50.0)

W2004-04-07-20-26-35 - PPMAG4, IRIG:1/0/2
 UTC: 20:26:35.32 to 21:09:20.69, Dur: 2565s
 TimeLngth: 2565.35s, TimeInt: 28ms (35.5pps)
 TimeCor=-13.0s, PPS(min,max,med): 35,36,35
 Timeint/DSPdiff(mn,min,mx):28,28,36/28,28,36
 Prof: 441 to 91386, NumProf(r/t): 17571/90945
 ProcTime/Recs: 20:43:06-20:51:22/35142-52712
 ADacqtime: 25ms; DRate: 198.4KB/s; Flags: 0, 0, 0
 Pulse: 275ns, IFfilt: 5.0MHz; ppPol: HH HV VV
 TxPol: HHVV, PRF: 20 10 20 10 kHz, Noiseflg:2,2
 Range: Delay 75m, Spacing 15m, Gates 100
 Ave. Pulses: 84, Rng/Prof Aspect@90m/s: 5.9

	Min	Max	Mean	Std	Varc%
hhN (dB)	-67.06	-63.56	-65.13	-75.20	9.8
vvN (dB)	-66.82	-63.51	-65.13	-75.23	9.8
hhL (dB)	-4.09	-0.36	-1.06	-12.15	7.8
vvL (dB)	6.00	6.00	6.00	-Inf	0.0
ppN (m/s)	-12.77	12.43	-0.01	4.14	
ppT (m/s)	-100.8	98.20	-0.11	32.67	
hh/vv (dB)	NaN	60.42	11.35	34.31	1974
vh/hh (dB)	NaN	-27.16	-35.39	-35.46	98.4
hv/vv (dB)	NaN	-32.01	-48.44	-43.81	290.
hnjmp (dB)			0.15		
vnjmp (dB)			0.13		



CIFEX 2004 Data (cal/250ns+2.5/100ns-3.5/500ns: 53.0,50.0)

W2004-04-07-20-26-35 - PPMAG4, IRIG:1/0/2
 UTC: 20:26:35.32 to 21:09:20.69, Dur: 2565s
 TimeLngth: 2565.35s, TimeInt: 28ms (35.5pps)
 TimeCor=-13.0s, PPS(min,max,med): 35,36,35
 Timeint/DSPdiff(mn,min,mx):28,28,36/28,28,36
 Prof: 441 to 91386, NumProf(r/t): 17571/90945
 ProcTime/Recs: 20:43:06-20:51:22/35142-52712
 ADacqtime: 25ms; DRate: 198.4KB/s; Flags: 0, 0, 0
 Pulse: 275ns, IFilt: 5.0MHz; ppPol: HH HV VV
 TxPol: HHVV, PRF: 20 10 20 10 kHz, NoiseFlg:2,2
 Range: Delay 75m, Spacing 15m, Gates 100
 Ave. Pulses: 84, Rng/Prof Aspect@90m/s: 5.9

	Min	Max	Mean	Std	Varc%
hhN(dB)	-67.06	-63.56	-65.13	-75.20	9.8
vvN(dB)	-66.82	-63.51	-65.13	-75.23	9.8
hhL(dB)	-4.09	-0.36	-1.06	-12.15	7.8
vvL(dB)	6.00	6.00	6.00	-Inf	0.0
ppN(m/s)	-12.77	12.43	-0.01	4.14	
ppT(m/s)	-100.8	98.20	-0.11	32.67	
hh/vv(dB)	NaN	60.42	11.35	34.31	1974
vh/hh(dB)	NaN	-27.16	-35.39	-35.46	98.4
hv/vv(dB)	NaN	-32.01	-48.44	-43.81	290.
hnjmp(dB)				0.15	
vnjmp(dB)				0.13	