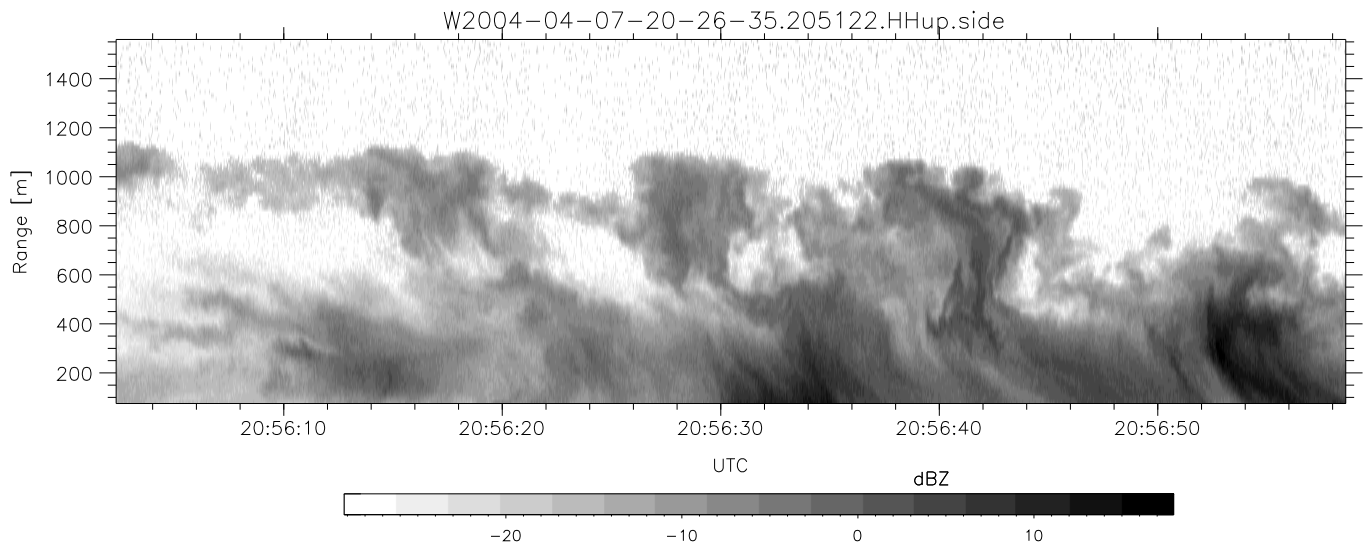
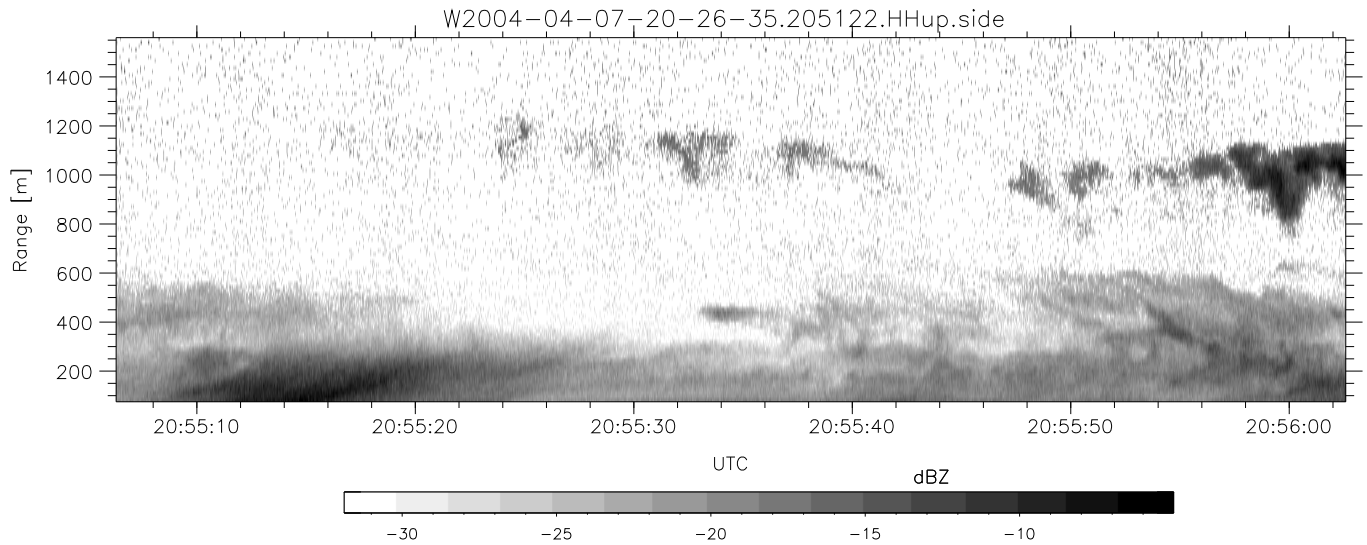
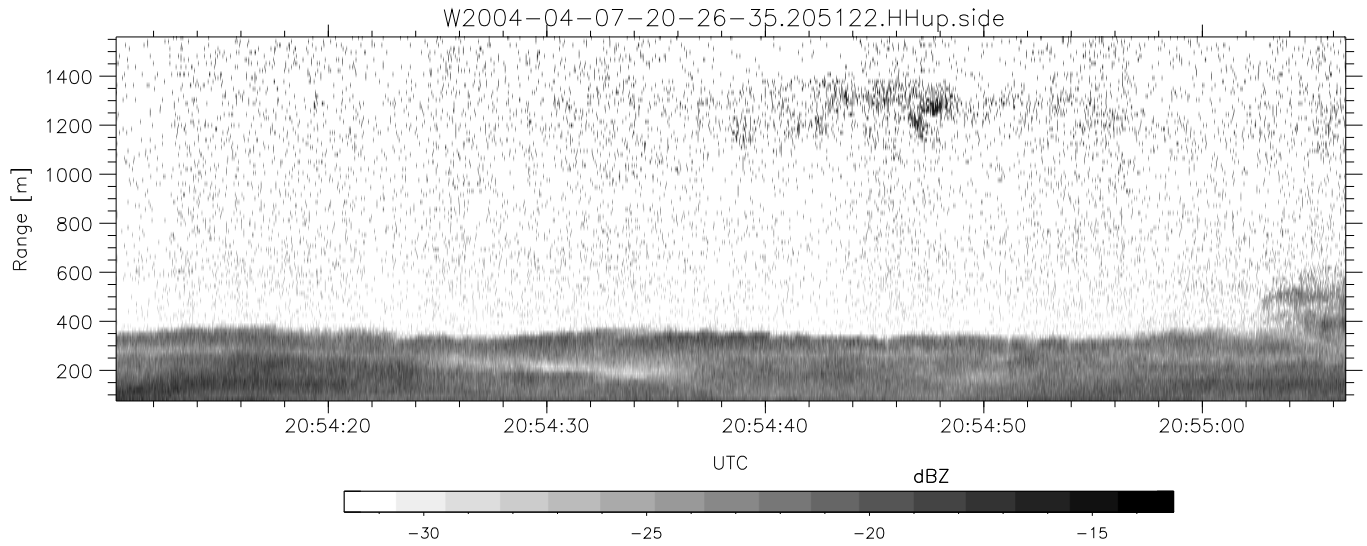


CIFEX 2004 Data (cal/250ns+2.5/100ns-3.5/500ns: 53.0,50.0)

W2004-04-07-20-26-35 - PPMAG4, IRIG:1/0/2  
 UTC: 20:26:35.32 to 21:09:20.69, Dur: 2565s  
 TimeLngth: 2565.35s, TimeInt: 28ms (35.5pps)  
 TimeCor=-13.0s, PPS(min,max,med): 35,36,35  
 Timeint/DSPdiff(mn,min,mx):28,28,32/28,28,32  
 Prof: 441 to 91386, NumProf(r/t): 17571/90945  
 ProcTime/Recs: 20:51:22-20:59:37/52713-70283  
 ADacqtime: 25ms; DRate: 198.4KB/s; Flags: 0, 0, 0  
 Pulse: 275ns, IFilt: 5.0MHz; ppPol: HH HV VV  
 TxPol: HHVV, PRF: 20 10 20 10 kHz, NoiseFlg:2,2  
 Range: Delay 75m, Spacing 15m, Gates 100  
 Ave. Pulses: 84, Rng/Prof Aspect@90m/s: 5.9

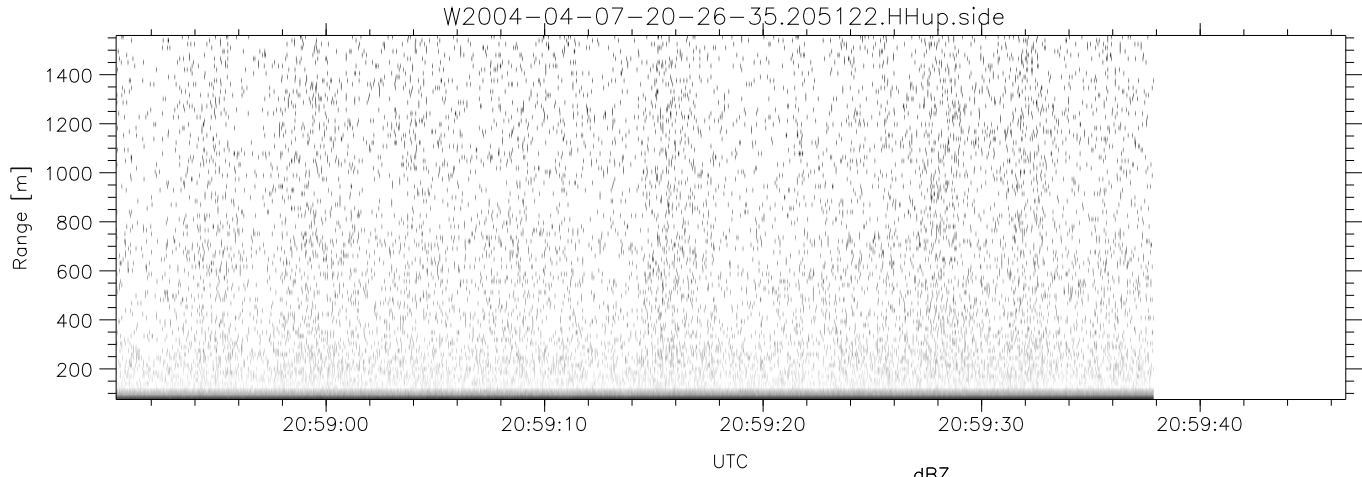
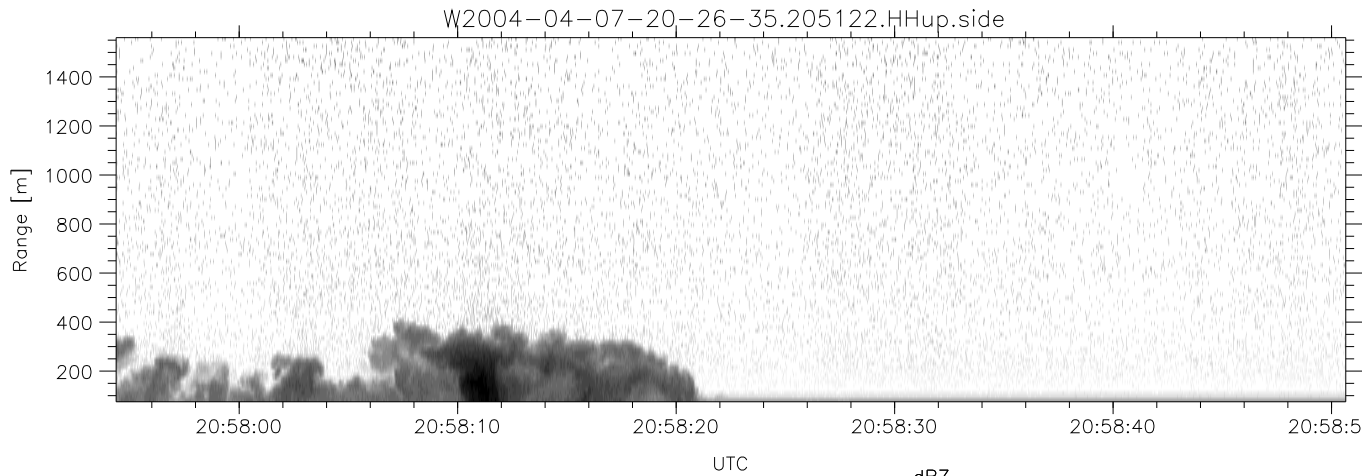
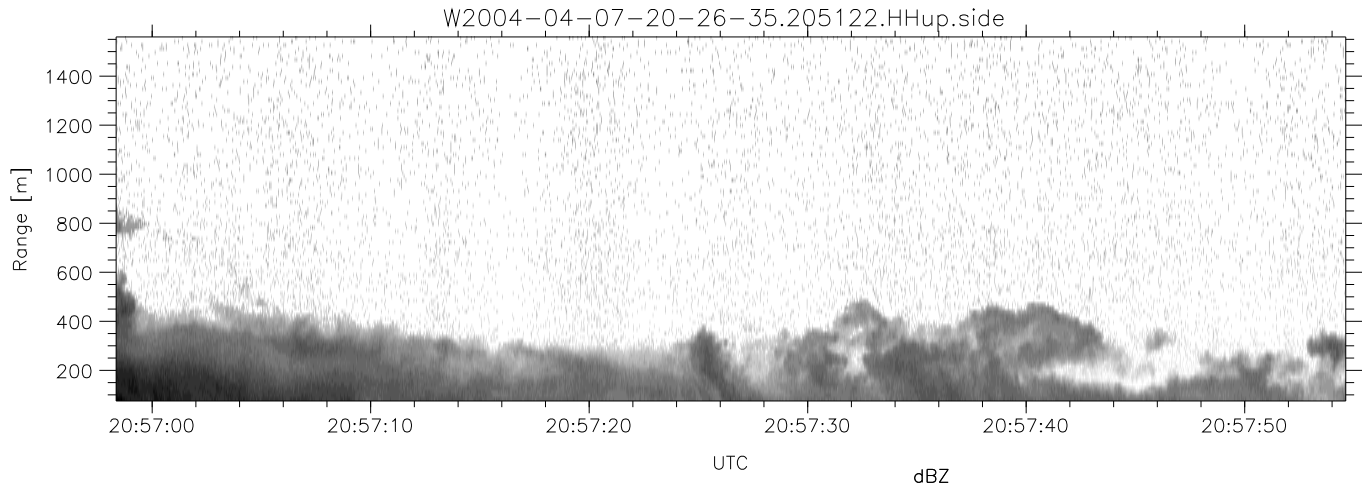
	Min	Max	Mean	Std	Varc%
hhN (dB)	-66.93	-63.62	-65.19	-75.29	9.8
vvN (dB)	-66.99	-63.60	-65.13	-75.17	9.9
hhL (dB)	-7.10	3.55	-1.03	-3.22	60.4
vvL (dB)	5.61	6.00	6.00	-23.00	0.1
ppN (m/s)	-12.24	12.58	-0.08	4.14	
ppT (m/s)	-96.72	99.39	-0.62	32.69	
hh/vv (dB)	-64.85	20.74	-5.67	-0.58	323.
vh/hh (dB)	NaN	-26.23	-35.85	-35.88	99.3
hv/vv (dB)	NaN	-32.36	-46.91	-42.81	257.
hnjmp (dB)			-0.13		
vnjmp (dB)			-0.14		



CIFEX 2004 Data (cal/250ns+2.5/100ns-3.5/500ns: 53.0,50.0)

W2004-04-07-20-26-35 - PPMAG4, IRIG:1/0/2  
 UTC: 20:26:35.32 to 21:09:20.69, Dur: 2565s  
 TimeLngth: 2565.35s, TimeInt: 28ms (35.5pps)  
 TimeCor=-13.0s, PPS(min,max,med): 35,36,35  
 Timeint/DSPdiff(mn,min,mx):28,28,32/28,28,32  
 Prof: 441 to 91386, NumProf(r/t): 17571/90945  
 ProcTime/Recs: 20:51:22-20:59:37/52713-70283  
 ADacqtime: 25ms; DRate: 198.4KB/s; Flags: 0, 0, 0  
 Pulse: 275ns, IFilt: 5.0MHz; ppPol: HH HV VV  
 TxPol: HHVV, PRF: 20 10 20 10 kHz, NoiseFlg:2,2  
 Range: Delay 75m, Spacing 15m, Gates 100  
 Ave. Pulses: 84, Rng/Prof Aspect@90m/s: 5.9

	Min	Max	Mean	Std	Varc%
hhN (dB)	-66.93	-63.62	-65.19	-75.29	9.8
vvN (dB)	-66.99	-63.60	-65.13	-75.17	9.9
hhL (dB)	-7.10	3.55	-1.03	-3.22	60.4
vvL (dB)	5.61	6.00	6.00	-23.00	0.1
ppN (m/s)	-12.24	12.58	-0.08	4.14	
ppT (m/s)	-96.72	99.39	-0.62	32.69	
hh/vv (dB)	-64.85	20.74	-5.67	-0.58	323.
vh/hh (dB)	NaN	-26.23	-35.85	-35.88	99.3
hv/vv (dB)	NaN	-32.36	-46.91	-42.81	257.
hnjmp (dB)			-0.13		
vnjmp (dB)			-0.14		



CIFEX 2004 Data (cal/250ns+2.5/100ns-3.5/500ns: 53.0,50.0)

W2004-04-07-20-26-35 - PPMAG4, IRIG:1/0/2  
 UTC: 20:26:35.32 to 21:09:20.69, Dur: 2565s  
 TimeLngth: 2565.35s, TimeInt: 28ms (35.5pps)  
 TimeCor=-13.0s, PPS(min,max,med): 35,36,35  
 Timeint/DSPdiff(mn,min,mx):28,28,32/28,28,32  
 Prof: 441 to 91386, NumProf(r/t): 17571/90945  
 ProcTime/Recs: 20:51:22-20:59:37/52713-70283  
 ADacqtime: 25ms; DRate: 198.4KB/s; Flags: 0, 0, 0  
 Pulse: 275ns, IFilt: 5.0MHz; ppPol: HH HV VV  
 TxPol: HHV, PRF: 20 10 20 10 kHz, NoiseFlg:2,2  
 Range: Delay 75m, Spacing 15m, Gates 100  
 Ave. Pulses: 84, Rng/Prof Aspect@90m/s: 5.9

	Min	Max	Mean	Std	Varc%
hhN (dB)	-66.93	-63.62	-65.19	-75.29	9.8
vvN (dB)	-66.99	-63.60	-65.13	-75.17	9.9
hhL (dB)	-7.10	3.55	-1.03	-3.22	60.4
vvL (dB)	5.61	6.00	6.00	-23.00	0.1
ppN (m/s)	-12.24	12.58	-0.08	4.14	
ppT (m/s)	-96.72	99.39	-0.62	32.69	
hh/vv (dB)	-64.85	20.74	-5.67	-0.58	323.
vh/hh (dB)	NaN	-26.23	-35.85	-35.88	99.3
hv/vv (dB)	NaN	-32.36	-46.91	-42.81	257.
hnjmp (dB)			-0.13		
vnjmp (dB)			-0.14		