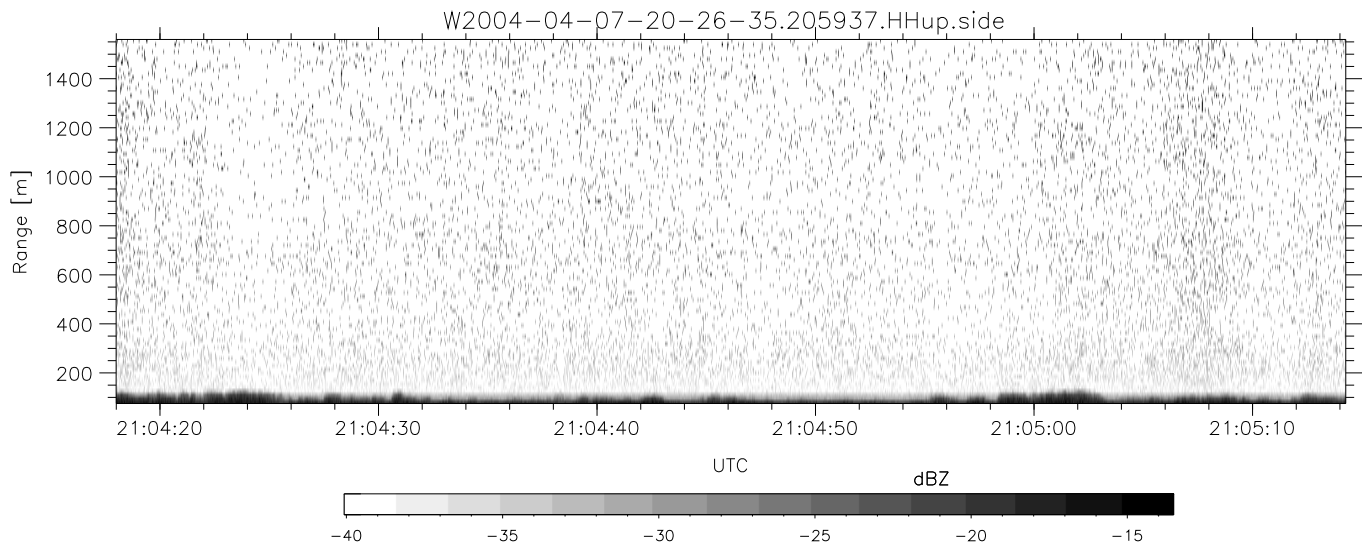
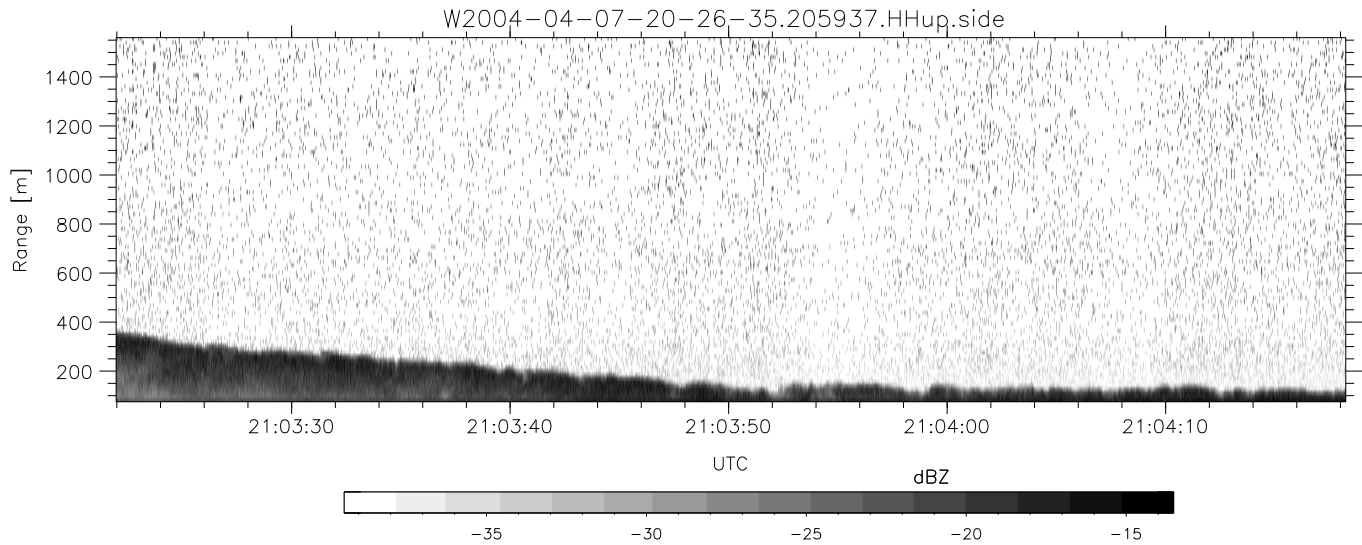
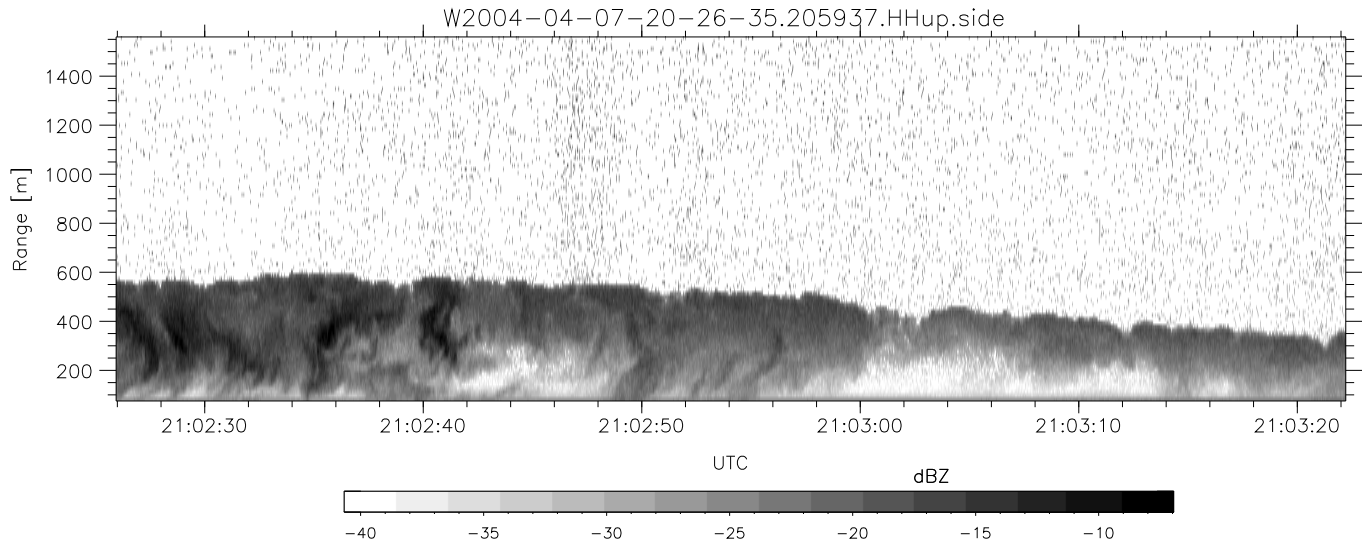


CIFEX 2004 Data (cal/250ns+2.5/100ns-3.5/500ns: 53.0,50.0)

W2004-04-07-20-26-35 - PPMAG4, IRIG:1/0/2
 UTC: 20:26:35.32 to 21:09:20.69, Dur: 2565s
 TimeLngth: 2565.35s, TimeInt: 28ms (35.5pps)
 TimeCor=-13.0s, PPS(min,max,med): 35,36,35
 Timeint/DSPdiff(mn,min,mx):28,28,46/28,28,46
 Prof: 441 to 91386, NumProf(r/t): 17571/90945
 ProcTime/Recs: 20:59:37-21:07:53/70284-87854
 ADacqtime: 25ms; DRate: 198.4KB/s; Flags: 0, 0, 0
 Pulse: 275ns, IFilt: 5.0MHz; ppPol: HH HV VV
 TxPol: HHVV, PRF: 20 10 20 10 kHz, Noiseflg:4,2
 Range: Delay 75m, Spacing 15m, Gates 100
 Ave. Pulses: 84, Rng/Prof Aspect@90m/s: 5.9

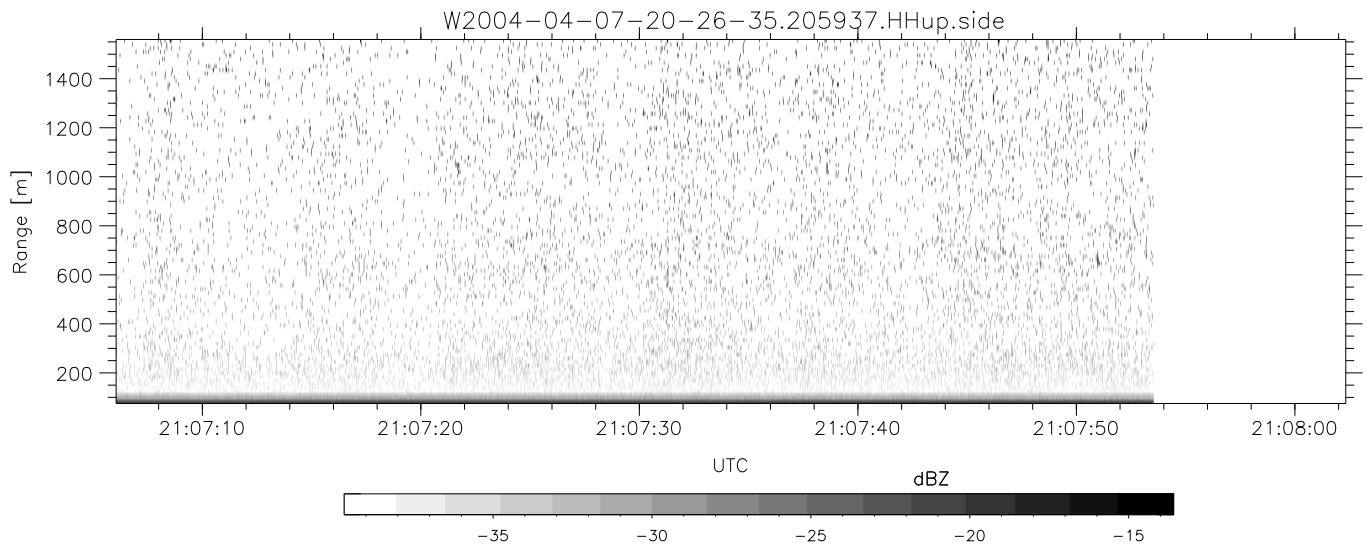
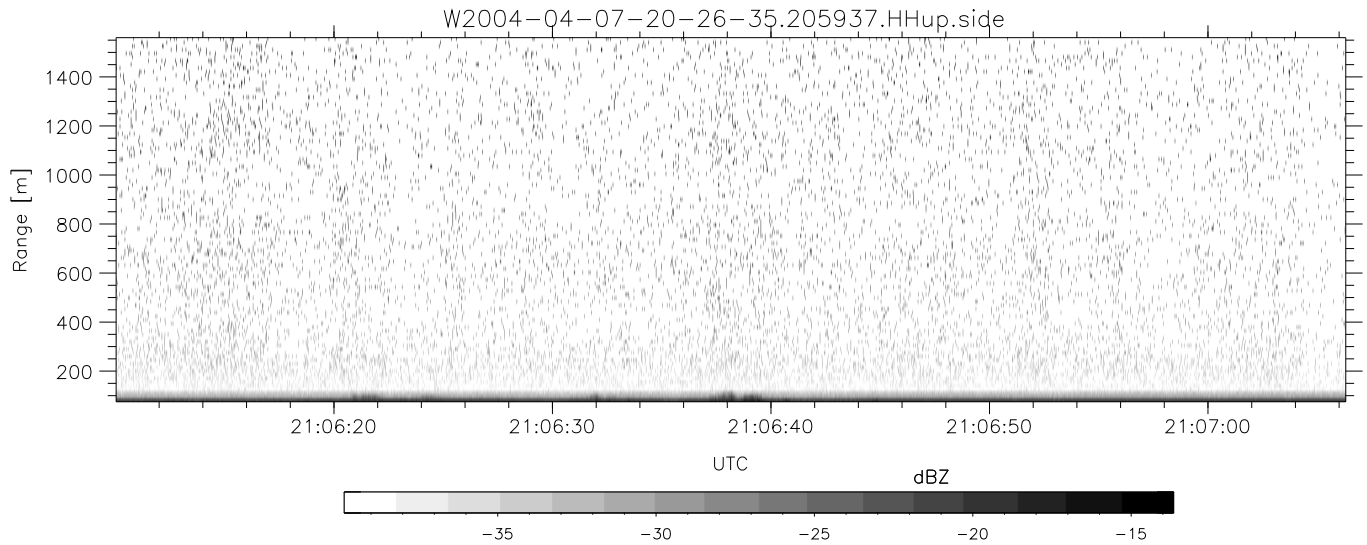
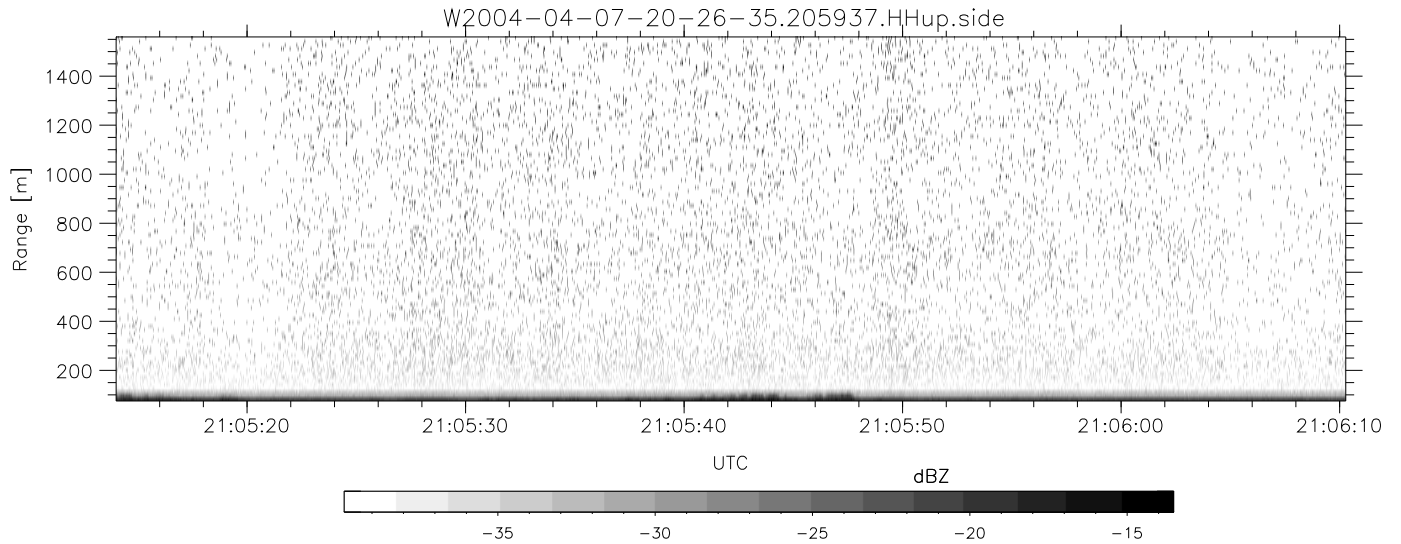
	Min	Max	Mean	Std	Varc%
hhN(dB)	-66.82	-63.59	-65.26	-75.37	9.8
vvN(dB)	-67.12	-63.57	-65.24	-75.29	9.9
hhL(dB)	-3.73	3.70	1.94	-2.62	35.1
vvL(dB)	3.39	6.00	5.98	-11.00	2.0
ppN(m/s)	-12.65	12.85	0.01	4.14	
ppT(m/s)	-99.91	101.55	0.04	32.72	
hh/vv(dB)	NaN	53.01	8.98	37.00	6345
vh/hh(dB)	NaN	-28.35	-32.00	-34.74	53.2
hv/vv(dB)	NaN	-34.49	-57.57	-45.71	1534
hh_jmp(dB)				0.13	
vv_jmp(dB)				0.14	



CIFEX 2004 Data (cal/250ns+2.5/100ns-3.5/500ns: 53.0,50.0)

W2004-04-07-20-26-35 - PPMAG4, IRIG:1/0/2
 UTC: 20:26:35.32 to 21:09:20.69, Dur: 2565s
 TimeLngth: 2565.35s, TimeInt: 28ms (35.5pps)
 TimeCor=-13.0s, PPS(min,max,med): 35,36,35
 Timeint/DSPdiff(mn,min,mx):28,28,46/28,28,46
 Prof: 441 to 91386, NumProf(r/t): 17571/90945
 ProcTime/Recs: 20:59:37-21:07:53/70284-87854
 ADacqtime: 25ms; DRate: 198.4KB/s; Flags: 0, 0, 0
 Pulse: 275ns, IFfilt: 5.0MHz; ppPol: HH HV VV
 TxPol: HHVV, PRF: 20 10 20 10 kHz, NoiseFlg:4,2
 Range: Delay 75m, Spacing 15m, Gates 100
 Ave. Pulses: 84, Rng/Prof Aspect@90m/s: 5.9

	Min	Max	Mean	Std	Varc%
hhN (dB)	-66.82	-63.59	-65.26	-75.37	9.8
vvN (dB)	-67.12	-63.57	-65.24	-75.29	9.9
hhL (dB)	-3.73	3.70	1.94	-2.62	35.1
vvL (dB)	3.39	6.00	5.98	-11.00	2.0
ppN (m/s)	-12.65	12.85	0.01	4.14	
ppT (m/s)	-99.91	101.55	0.04	32.72	
hh/vv (dB)	NaN	53.01	8.98	37.00	6345
vh/hh (dB)	NaN	-28.35	-32.00	-34.74	53.2
hv/vv (dB)	NaN	-34.49	-57.57	-45.71	1534
hh_jmp (dB)				0.13	
vv_jmp (dB)				0.14	



CIFEX 2004 Data (cal/250ns+2.5/100ns-3.5/500ns: 53.0,50.0)

W2004-04-07-20-26-35 - PPMAG4, IRIG:1/0/2
 UTC: 20:26:35.32 to 21:09:20.69, Dur: 2565s
 TimeLngth: 2565.35s, TimeInt: 28ms (35.5pps)
 TimeCor=-13.0s, PPS(min,max,med): 35,36,35
 Timeint/DSPdiff(mn,min,mx):28,28,46/28,28,46
 Prof: 441 to 91386, NumProf(r/t): 17571/90945
 ProcTime/Recs: 20:59:37-21:07:53/70284-87854
 ADacqtime: 25ms; DRate: 198.4KB/s; Flags: 0, 0, 0
 Pulse: 275ns, IFfilt: 5.0MHz; ppPol: HH HV VV
 TxPol: HHVV, PRF: 20 10 20 10 kHz, NoiseFlg:4,2
 Range: Delay 75m, Spacing 15m, Gates 100
 Ave. Pulses: 84, Rng/Prof Aspect@90m/s: 5.9

	Min	Max	Mean	Std	Varc%
hhN (dB)	-66.82	-63.59	-65.26	-75.37	9.8
vvN (dB)	-67.12	-63.57	-65.24	-75.29	9.9
hhL (dB)	-3.73	3.70	1.94	-2.62	35.1
vvL (dB)	3.39	6.00	5.98	-11.00	2.0
ppN (m/s)	-12.65	12.85	0.01	4.14	
ppT (m/s)	-99.91	101.55	0.04	32.72	
hh/vv (dB)	NaN	53.01	8.98	37.00	6345
vh/hh (dB)	NaN	-28.35	-32.00	-34.74	53.2
hv/vv (dB)	NaN	-34.49	-57.57	-45.71	1534
hnjmp (dB)				0.13	
vnjmp (dB)				0.14	