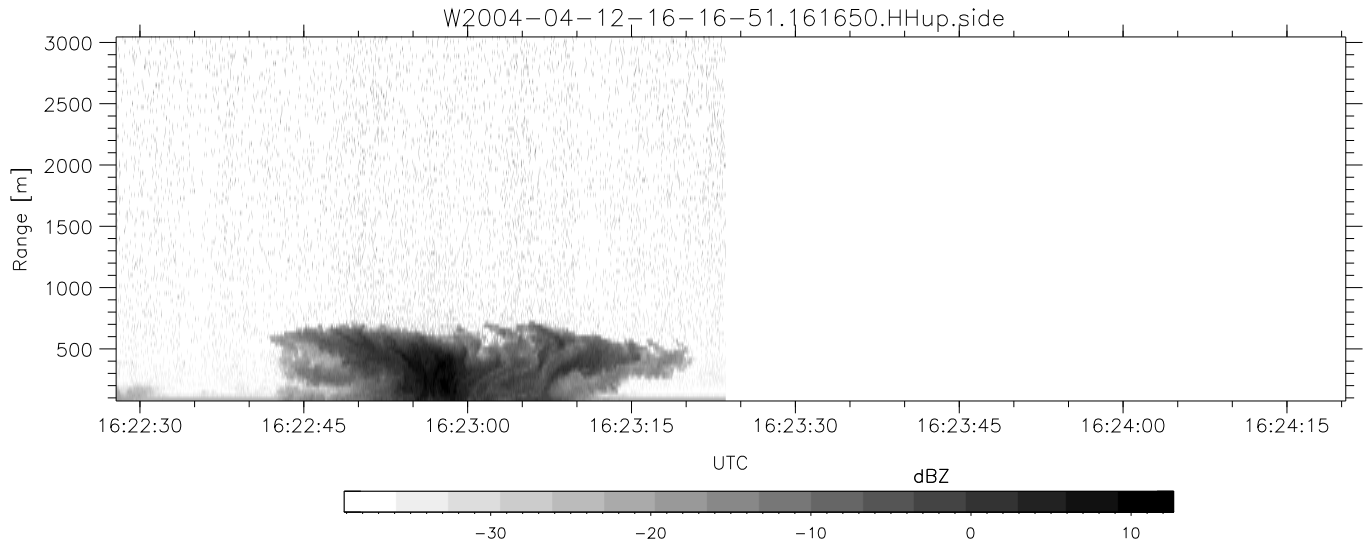


CIFEX 2004 Data (cal/250ns+2.5/100ns-3.5/500ns: 53.0,50.0)

W2004-04-12-16-16-51 - PPMAG4, IRIG:1/0/2
 UTC: 16:16:50.92 to 16:23:23.61, Dur: 393s
 TimeLngth: 392.70s, TimeInt: 28ms (35.4pps)
 TimeCor=-13.0s, PPS(min,max,med): 35,36,35
 Timeint/DSPdiff(mn,min,mx):28,28,33/28,28,33
 Prof: 1555 to 15472, NumProf(r/t): 13917/13917
 ADacqtime: 25ms; DRate: 198.4KB/s; Flags: 0, 0, 0
 Pulse: 275ns, IFfilt: 5.0MHz; ppPol: HH HV W
 TxPol: HHVV, PRF: 20 10 20 10 kHz, NoiseFlg:4,4
 Range: Delay 75m, Spacing 30m, Gates 100
 Ave. Pulses: 84, Rng/Prof Aspect@90m/s: 11.8

	Min	Max	Mean	Std	Varc%
hhN(dB)	-67.32	-64.17	-65.60	-75.67	9.8
vvN(dB)	-67.19	-63.73	-65.54	-75.52	10.1
hhL(dB)	-23.18	2.41	-0.10	-2.67	55.3
vvL(dB)	-11.32	6.00	5.45	0.53	32.2
ppN(m/s)	-12.74	12.45	-0.04	4.17	
ppT(m/s)	-100.6	98.32	-0.31	32.91	
hh/vv(dB)	NaN	46.93	8.63	23.65	3172
vh/hh(dB)	NaN	-27.16	-38.41	-36.69	148.
hv/vv(dB)	NaN	-33.44	-46.52	-42.76	238.
hn_jmp(dB)			0.14		
vn_jmp(dB)			0.12		



CIFEX 2004 Data (cal/250ns+2.5/100ns-3.5/500ns: 53.0,50.0)

W2004-04-12-16-16-51 - PPMAG4, IRIG:1/0/2
 UTC: 16:16:50.92 to 16:23:23.61, Dur: 393s
 TimeLngth: 392.70s, TimeInt: 28ms (35.4pps)
 TimeCor=-13.0s, PPS(min,max,med): 35,36,35
 Timeint/DSPdiff(mn,min,mx):28,28,33/28,28,33
 Prof: 1555 to 15472, NumProf(r/t): 13917/13917
 ADacqtime: 25ms; DRate: 198.4kB/s; Flags: 0, 0, 0
 Pulse: 275ns, IFfilt: 5.0MHz; ppPol: HH HV VV
 TxPol: HHVV, PRF: 20 10 20 10 kHz, NoiseFlg:4,4
 Range: Delay 75m, Spacing 30m, Gates 100
 Ave. Pulses: 84, Rng/Prof Aspect@90m/s: 11.8

	Min	Max	Mean	Std	Varc%
hhN(dB)	-67.32	-64.17	-65.60	-75.67	9.8
vvN(dB)	-67.19	-63.73	-65.54	-75.52	10.1
hhL(dB)	-23.18	2.41	-0.10	-2.67	55.3
vvL(dB)	-11.32	6.00	5.45	0.53	32.2
ppN(m/s)	-12.74	12.45	-0.04	4.17	
ppT(m/s)	-100.6	98.32	-0.31	32.91	
hh/vv(dB)	NaN	46.93	8.63	23.65	3172
vh/hh(dB)	NaN	-27.16	-38.41	-36.69	148.
hv/vv(dB)	NaN	-33.44	-46.52	-42.76	238.
hnjmp(dB)			0.14		
vnjmp(dB)			0.12		