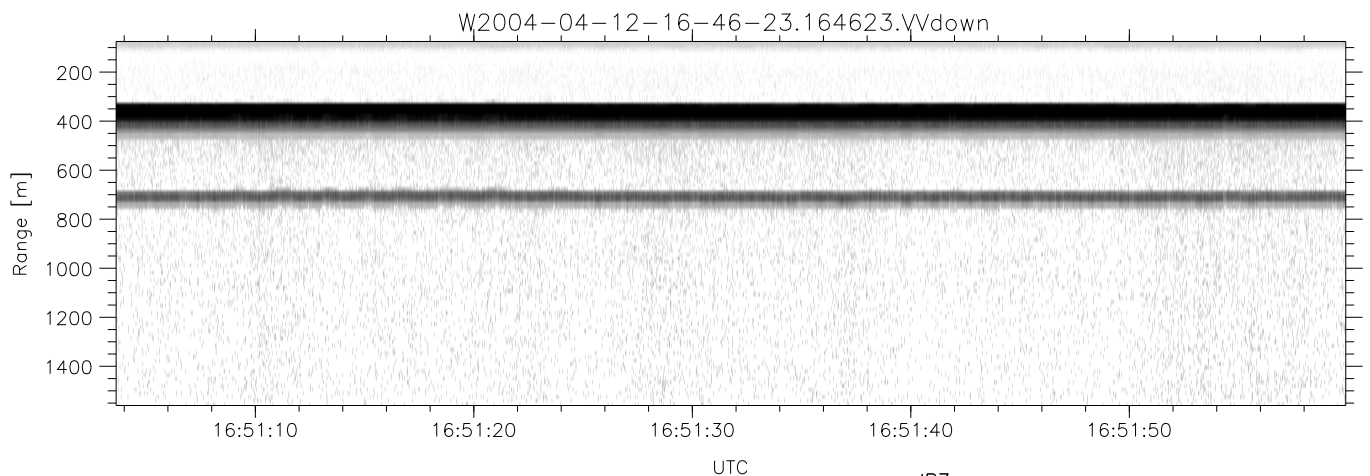
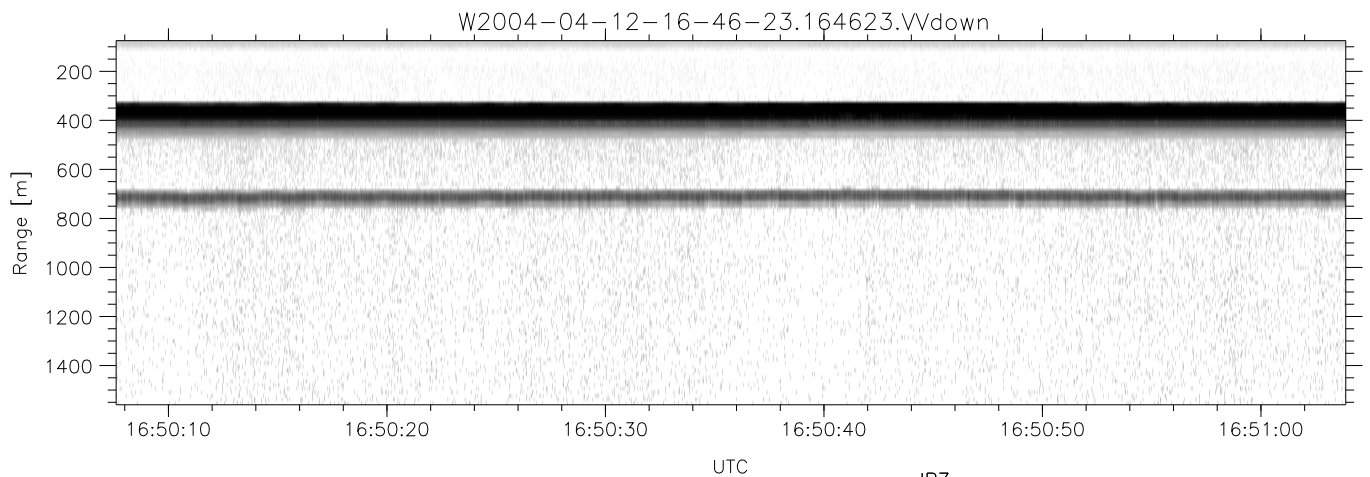
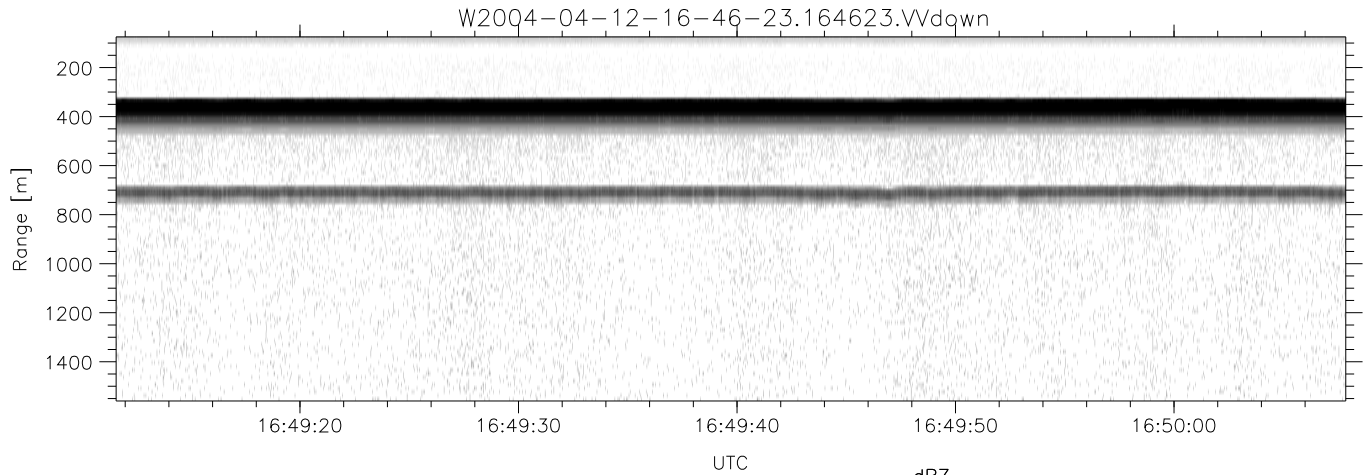


CIFEX 2004 Data (cal/250ns+2.5/100ns-3.5/500ns: 53.0,50.0)

W2004-04-12-16-46-23 - PPMAG4, IRIG:1/0/2  
 UTC: 16:46:23.55 to 16:55:09.61, Dur: 526s  
 TimeLngth: 526.07s, TimeInt: 28ms (35.4pps)  
 TimeCor=-13.0s, PPS(min,max,med): 35,36,35  
 Timeint/DSPdiff(mn,min,mx):28,28,31/28,28,28  
 Prof: 619 to 19269, NumProf(r/t): 17571/18650  
 ProcTime/Recs: 16:46:23-16:54:39/0-17570  
 ADacqtime: 25ms; DRate: 198.4KB/s; Flags: 0, 0, 0  
 Pulse: 275ns, IFilt: 5.0MHz; ppPol: HH HV VV  
 TxPol: HHVV, PRF: 20 10 20 10 kHz, Noiseflg:4,3  
 Range: Delay 75m, Spacing 15m, Gates 100  
 Ave. Pulses: 84, Rng/Prof Aspect@90m/s: 5.9

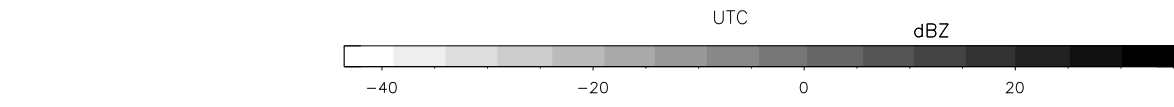
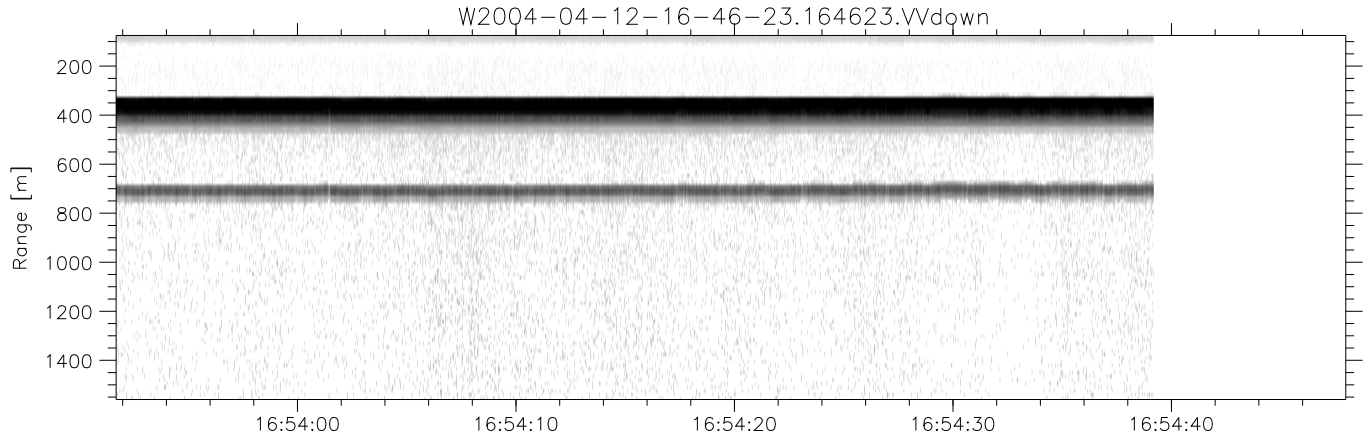
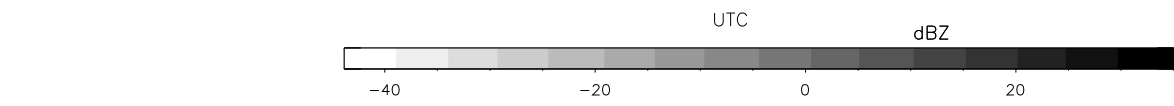
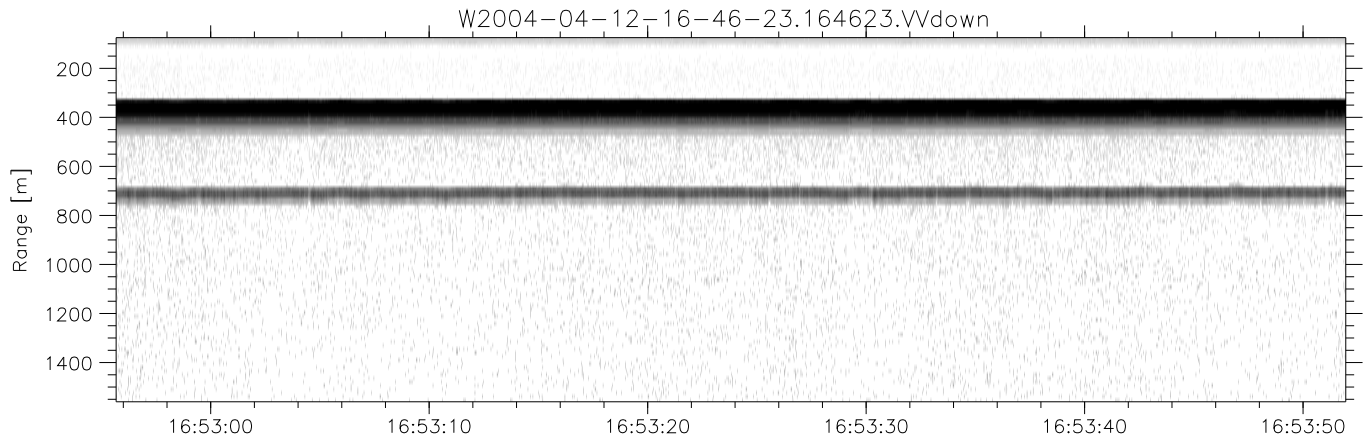
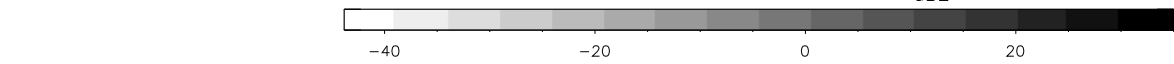
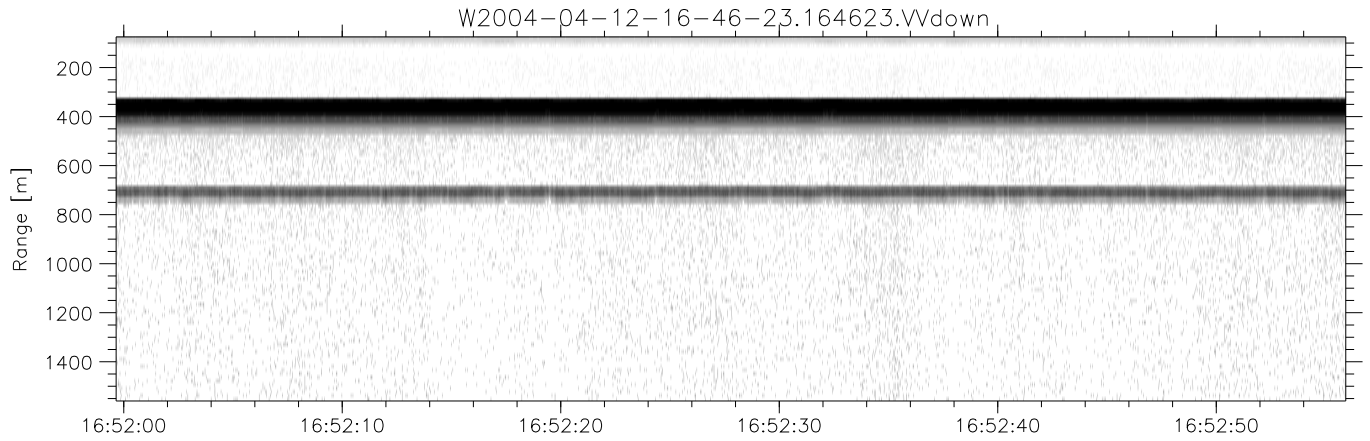
	Min	Max	Mean	Std	Varc%
hhN(dB)	-68.15	-64.44	-66.13	-76.17	9.9
vvN(dB)	-68.06	-64.42	-66.11	-76.09	10.0
hhL(dB)	-12.46	-5.26	-6.51	-16.53	10.0
vvL(dB)	4.35	6.00	5.93	-10.09	2.5
ppN(m/s)	-12.96	12.57	-0.03	4.18	
ppT(m/s)	-102.3	99.33	-0.25	33.01	
hh/vv(dB)	-99	-99	-99	-99	-99
vh/hh(dB)	-99	-99	-99	-99	-99
hv/vv(dB)	NaN	-35.59	-55.16	-46.57	724.
hnjmp(dB)			0.12		
vnjmp(dB)			0.12		



CIFEX 2004 Data (cal/250ns+2.5/100ns-3.5/500ns: 53.0,50.0)

W2004-04-12-16-46-23 - PPMAG4, IRIG:1/0/2  
 UTC: 16:46:23.55 to 16:55:09.61, Dur: 526s  
 TimeLngth: 526.07s, TimeInt: 28ms (35.4pps)  
 TimeCor=-13.0s, PPS(min,max,med): 35,36,35  
 Timeint/DSPdiff(mn,min,mx):28,28,31/28,28,28  
 Prof: 619 to 19269, NumProf(r/t): 17571/18650  
 ProcTime/Recs: 16:46:23-16:54:39/0-17570  
 ADacqtime: 25ms; DRate: 198.4KB/s; Flags: 0, 0, 0  
 Pulse: 275ns, IFilt: 5.0MHz; ppPol: HH HV VV  
 TxPol: HHVV, PRF: 20 10 20 10 kHz, Noiseflg:4,3  
 Range: Delay 75m, Spacing 15m, Gates 100  
 Ave. Pulses: 84, Rng/Prof Aspect@90m/s: 5.9

	Min	Max	Mean	Std	Varc%
hhN (dB)	-68.15	-64.44	-66.13	-76.17	9.9
vvN (dB)	-68.06	-64.42	-66.11	-76.09	10.0
hhL (dB)	-12.46	-5.26	-6.51	-16.53	10.0
vvL (dB)	4.35	6.00	5.93	-10.09	2.5
ppN (m/s)	-12.96	12.57	-0.03	4.18	
ppT (m/s)	-102.3	99.33	-0.25	33.01	
hh/vv (dB)	-99	-99	-99	-99	-99
vh/hh (dB)	-99	-99	-99	-99	-99
hv/vv (dB)	NaN	-35.59	-55.16	-46.57	724.
hnjmp (dB)			0.12		
vnjmp (dB)			0.12		



CIFEX 2004 Data (cal/250ns+2.5/100ns-3.5/500ns: 53.0,50.0)

W2004-04-12-16-46-23 - PPMAG4, IRIG:1/0/2  
 UTC: 16:46:23.55 to 16:55:09.61, Dur: 526s  
 TimeLngth: 526.07s, TimeInt: 28ms (35.4pps)  
 TimeCor=-13.0s, PPS(min,max,med): 35,36,35  
 Timeint/DSPdiff(mn,min,mx):28,28,31/28,28,28  
 Prof: 619 to 19269, NumProf(r/t): 17571/18650  
 ProcTime/Recs: 16:46:23-16:54:39/0-17570  
 ADacqtime: 25ms; DRate: 198.4KB/s; Flags: 0, 0, 0  
 Pulse: 275ns, IFilt: 5.0MHz; ppPol: HH HV VV  
 TxPol: HHVV, PRF: 20 10 20 10 kHz, Noiseflg:4,3  
 Range: Delay 75m, Spacing 15m, Gates 100  
 Ave. Pulses: 84, Rng/Prof Aspect@90m/s: 5.9

	Min	Max	Mean	Std	Varc%
hhN (dB)	-68.15	-64.44	-66.13	-76.17	9.9
vvN (dB)	-68.06	-64.42	-66.11	-76.09	10.0
hhL (dB)	-12.46	-5.26	-6.51	-16.53	10.0
vvL (dB)	4.35	6.00	5.93	-10.09	2.5
ppN (m/s)	-12.96	12.57	-0.03	4.18	
ppT (m/s)	-102.3	99.33	-0.25	33.01	
hh/vv (dB)	-99	-99	-99	-99	-99
vh/hh (dB)	-99	-99	-99	-99	-99
hv/vv (dB)	NaN	-35.59	-55.16	-46.57	724.
hnjmp (dB)			0.12		
vnjmp (dB)			0.12		